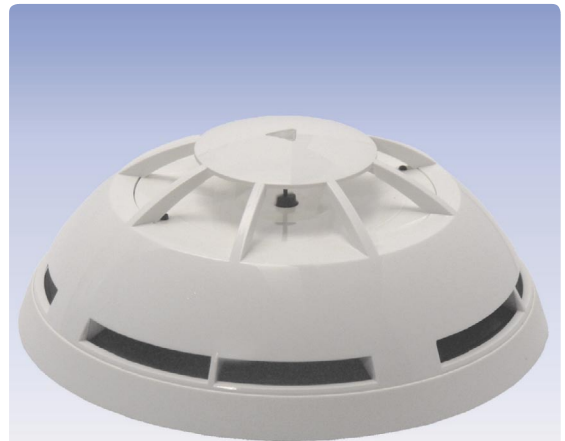


# Thermal Max Detector

## FC600/TMAX/78

- **Addressable conventional technology**
- **Individual detector identification with optional address module**
- **Alarm temperature 78°C**
- **Allows for connection of external remote indicator**
- **Anti-tamper locking feature on detector base**
- **Function check by means of test magnet**



### Description

The Thermal Max Detector FC600/TMAX/78 recognises a temperature of 78°C as alarm threshold and is compliant to EN 54-5 (class BS) standards. It can be used in rooms with a height of up to 6m. Any alarm will be transmitted to the fire detection panel in conventional technology. An individual detector identification can be obtained with the optional Address Module NG58-1.

The detector is equipped with an LED indicator which is visible from all sides at any angle and thus facilitates

easy identification of the alarming detector. In addition, a remote indicator can also be connected.

Several types of detector bases are available to facilitate quick and easy installation. To prevent unauthorized removal of the detector, all detector bases are equipped with an anti-tamper locking feature. A detector function test can be conveniently conducted by using a test magnet.

### Specifications

Operating voltage	10 – 30VDC (supply through detector line voltage)
Current consumption	typ. 40µA (normal condition)
Alarm temperature	78°C
Operating temperature	max. +60°C
Ambient temperature	-30°C to +70°C (continuous operation)
Relative humidity	max. 95% (no condensation)
Dimensions ø x h (without base)	106 x 46 (mm)
Colour	white
Weight	80g
Approvals	LPCB 603b/01 0832-CPD-01 26
Order number	242071
Order name	Thermal Max Detector/Conv./FC600 FC600/TMAX/78



0832-CPD-0126

*Building Safety. Building Security.*

## Free Manuals Download Website

<http://myh66.com>

<http://usermanuals.us>

<http://www.somanuals.com>

<http://www.4manuals.cc>

<http://www.manual-lib.com>

<http://www.404manual.com>

<http://www.luxmanual.com>

<http://aubethermostatmanual.com>

Golf course search by state

<http://golfingnear.com>

Email search by domain

<http://emailbydomain.com>

Auto manuals search

<http://auto.somanuals.com>

TV manuals search

<http://tv.somanuals.com>