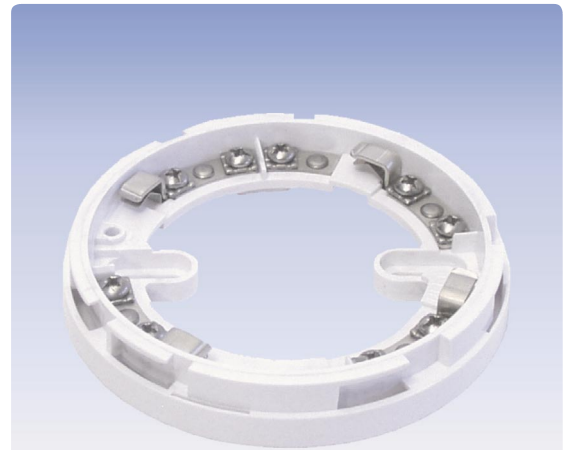


# Detector Base Series 65

## GSA-45681-200

- **Suitable for automatic detectors in conventional technology**
- **Screw terminals for secure connection of multiple wires**
- **Terminals for connection of remote indicator**
- **Mechanical theft protection can be activated**



### Description

The Detector Base GSA-45681-200 is designed for the easy connection of automatic detectors Series 65 in addressable conventional technology. Due to its robust multi-wire screw terminals, the detectors can be wired with ease, thus achieving a secure and durable connection.

The base provides the possibility to easily connect an

external remote indicator, and has been designed for surface mounting in dry rooms. For special applications a range of accessories (for moist room, false ceiling or flush installation) is available.

A mechanical theft protection of the detector can optionally be activated at the detector base.

### Specifications

Ambient temperature	-20°C to +70°C (no condensation or icing)
Relative humidity	10 – 95% (no condensation)
Dimensions $\varnothing \times H$	100 × 15 (mm)
Colour	white
Weight	50g
Order number	246021
Order name	Detector Base/Conv./60/65/Apo GSA-45681-200

## Free Manuals Download Website

<http://myh66.com>

<http://usermanuals.us>

<http://www.somanuals.com>

<http://www.4manuals.cc>

<http://www.manual-lib.com>

<http://www.404manual.com>

<http://www.luxmanual.com>

<http://aubethermostatmanual.com>

Golf course search by state

<http://golfingnear.com>

Email search by domain

<http://emailbydomain.com>

Auto manuals search

<http://auto.somanuals.com>

TV manuals search

<http://tv.somanuals.com>