

DC-A11 Quick Start Guide

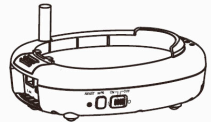
⚠ Important

* Please activate your warranty at www.lumens.com.tw/reg.

* To download the latest version of Quick Start Guide, multilingual user manual, software, or driver, etc., please visit Lumens™ <http://www.lumens.com.tw/goto.htm>

1. Package Contents

DC-A11

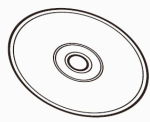


Quick Start Guide



* To download this manual in other languages, visit Lumens website.

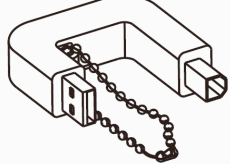
Software CD



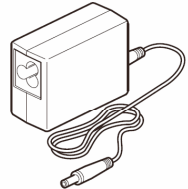
Wireless USB Dongle for PC



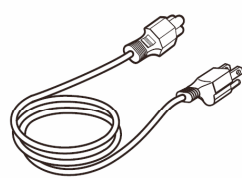
USB connection cable



AC Adapter



Power Cord



⚠ The package contents are subject to change without notice.

2. Software Installation Guide

2.1 System requirements

Windows XP	Windows Vista/Windows 7
<ul style="list-style-type: none"> • Min CPU: P4 2.8 GHz • Min Memory: 512 MB • Supporting Direct X 9 • Min Resolution: 1024 x 768 • Min Hard Drive Space: 100 MB • Windows XP SP2 or above 	<ul style="list-style-type: none"> • Min CPU: P4 2.8 GHz • Min Memory: 1 GB (32-bits)/2 GB (64-bits) • Supporting Direct X 9 • Min Resolution: 1024 x 768 • Min Hard Drive Space: 100 MB

⚠ Important Information

* To ensure successful installation, please be sure to follow each of the following steps.

* The content of CD may be changed. If you cannot find the desired files in the CD, please contact the distributor or download from Lumens™ website.

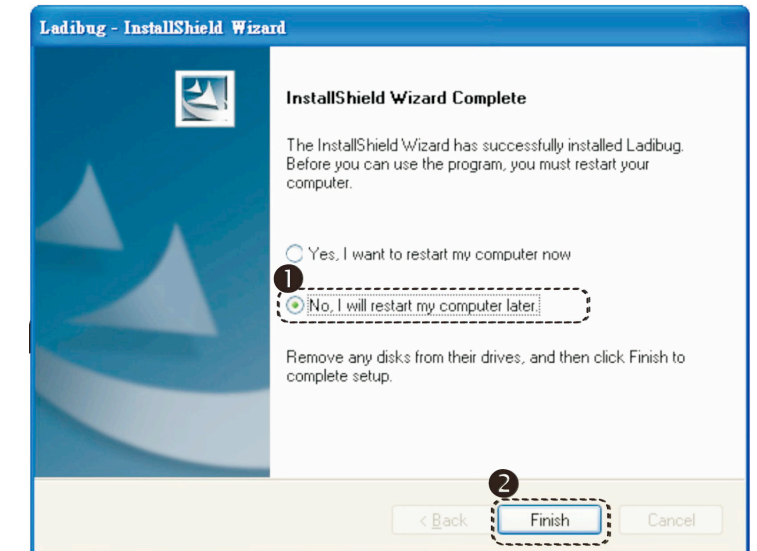
* The MAC operation system is supported for a USB cable connection directly to a DC120 and not yet supported for a wireless connection.

→ Windows XP/Vista/7 User

2.2 Install Ladibug™

1. Insert the software CD into your computer.
2. The software installation program will automatically launch. Please select [Install Ladibug] to begin installation.
3. Please follow the instructions, then press [Next].
4. Press [Yes] to create a Ladibug™ shortcut on your desktop.
5. Click [NO], then press [Finish] to cancel the restart. (Refer to Fig. 1)
[NOTE: Please restart the computer only when the installation of Wireless LAN Utility is completed.]

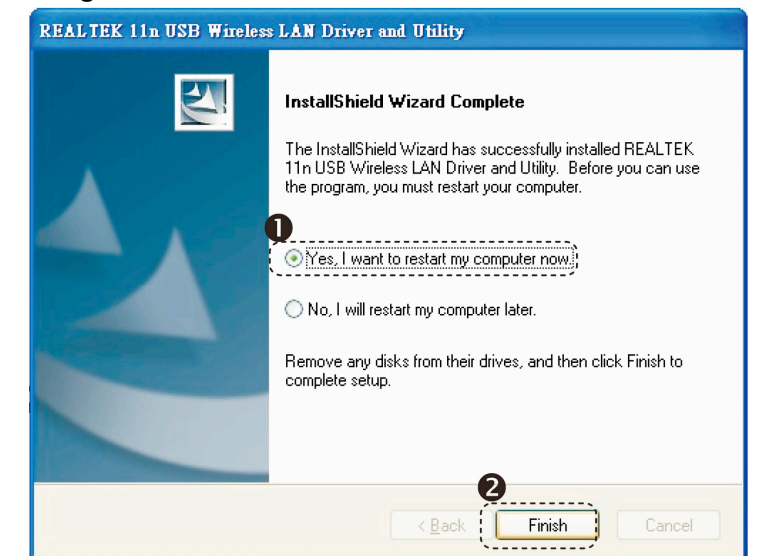
▼Fig. 1



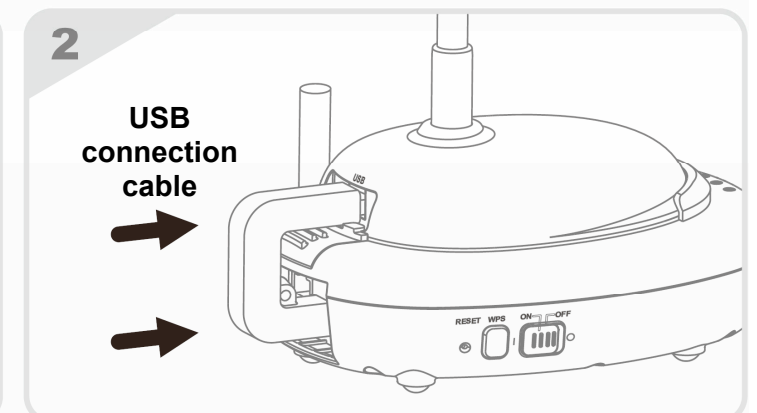
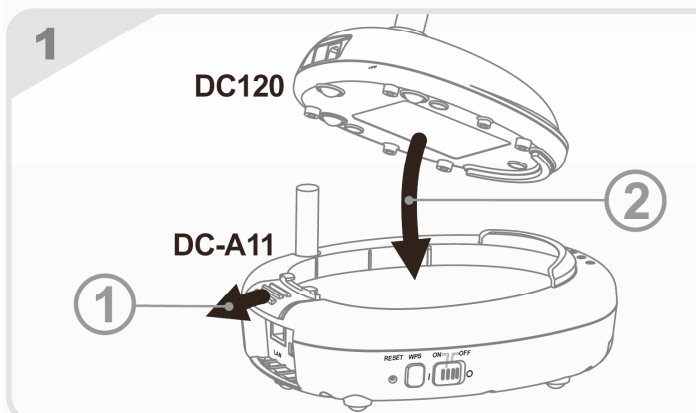
2.3 Installing Wireless LAN Utility

1. Please select [Wireless LAN Utility] to begin installation.
2. Select Language.
3. Please follow the instructions, then press [Next].
4. Please click the [Finish] button to restart your computer. (Refer to Fig. 2)

▼Fig. 2



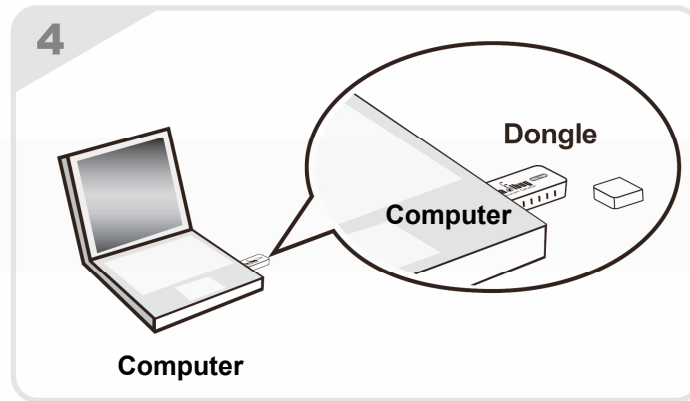
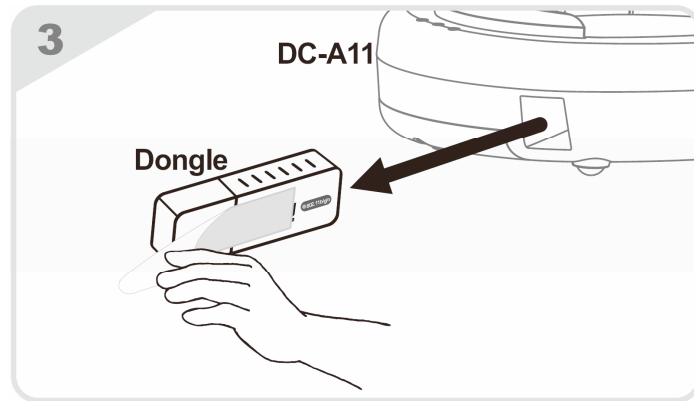
3. Installation



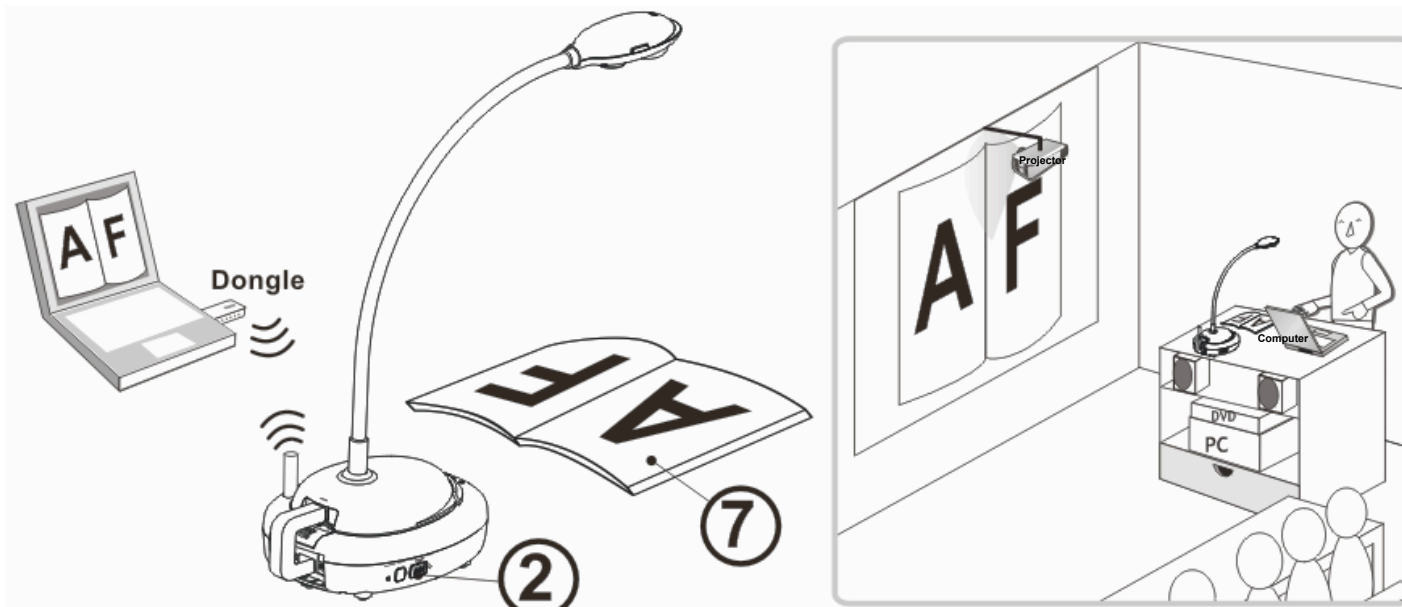
Continued on the next page ▼

3. Installation

▲Continued from the previous page



4. Start Using



- ① Charge the unit for 3 hours before the first use.
- ② Switch power to [ON]. (Note: When the unit is fully charged, indicator lights blue.)
- ③ To start connection, please follow the steps of [Section 5.1 Auto connection](#).
- ④ Modify SSID before the first use. Please follow the steps of [5.2 Change the SSID](#) for modification.
- ⑤ Double click on [Ladibug] icon to activate Ladibug™ Software.
- ⑥ Move the mouse to [Ladibug] icon, and the main function menu will be displayed.
- ⑦ Place an object to be displayed under the camera.
- ⑧ Press [Preview] to display the setting screen of POWER Frequency, and follow the screen instructions. A live image is displayed when the setting is finished.
(* This setting is required for the first use only.)
- ⑨ Press [AUTO TUNE] button to optimize the image.

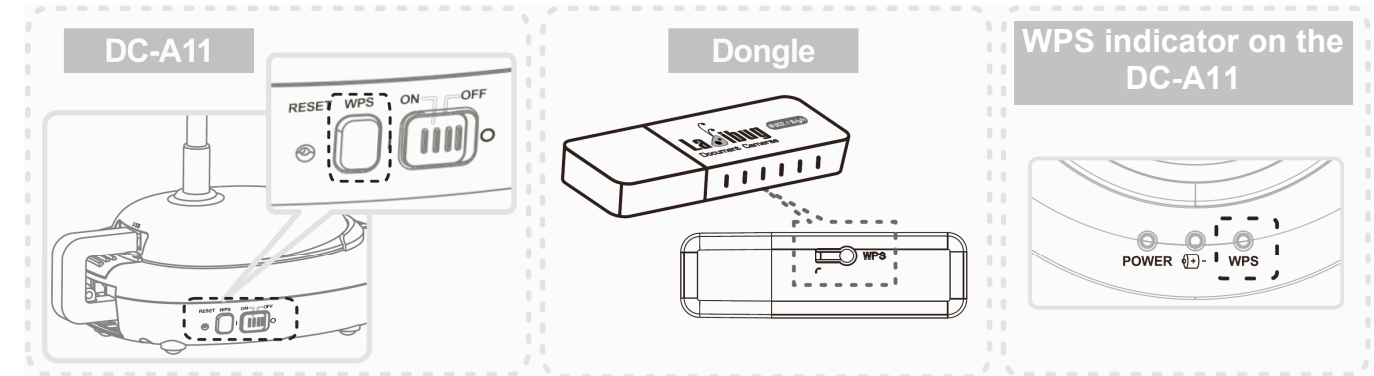
* For more information on the operation of DC120, please refer to [DC120 User Manual](#).
* For more information on the setting of DC-A11, please refer to [DC-A11 User Manual](#).

5. Start Wireless Network Connection

5.1 Auto connection

1. Press the WPS button of DC-A11, as shown in Fig. 1.
2. Within 30 seconds, press and hold the WPS button of Dongle for about 5 seconds, as shown in Fig. 2.

[Note] The WPS indicator of DC-A11 will now flash red, and then light blue after the connection is made. (Refer to Fig. 3)



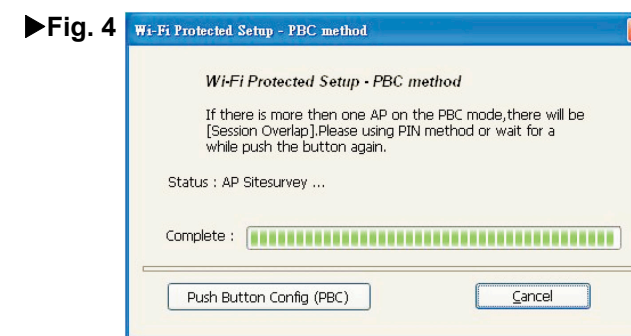
▲Fig. 1

▲Fig. 2

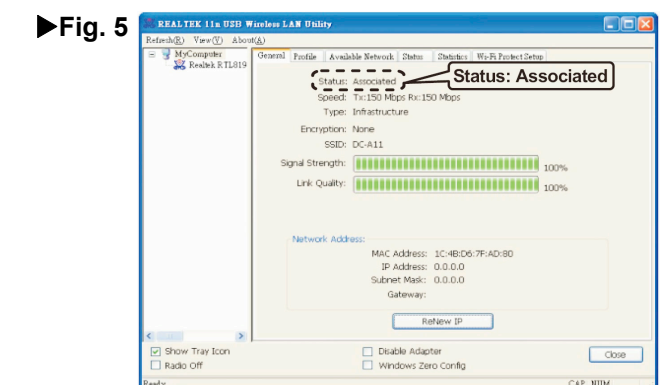
▲Fig. 3

3. The connection is started when the screen like Fig. 4 displays. The connection will complete when the window closes.

4. Double click the icon of Wireless LAN Utility. (A screen indicating successful connection is as shown in Fig. 5)



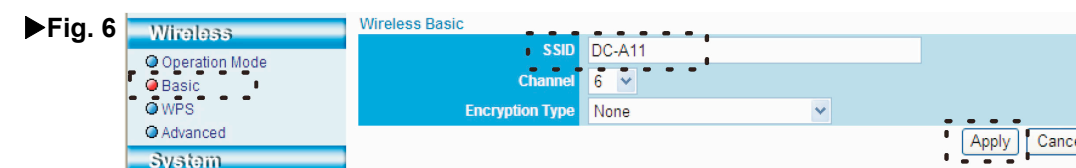
►Fig. 4



►Fig. 5

5.2 Change the SSID

1. Open the Internet Explorer webpage browser, and enter [192.168.2.1] (default) in the address bar.
2. Enter the Login Name [Admin].
3. Enter the default password [Admin] and click [Login].
4. Enter the [Basic] page (Please refer to Fig. 6).
5. Enter new [SSID], and click [Apply] to apply the changes.
6. Please make a connection again according to the steps of [5.1 Auto connection](#).



►Fig. 6

Free Manuals Download Website

<http://myh66.com>

<http://usermanuals.us>

<http://www.somanuals.com>

<http://www.4manuals.cc>

<http://www.manual-lib.com>

<http://www.404manual.com>

<http://www.luxmanual.com>

<http://aubethermostatmanual.com>

Golf course search by state

<http://golfingnear.com>

Email search by domain

<http://emailbydomain.com>

Auto manuals search

<http://auto.somanuals.com>

TV manuals search

<http://tv.somanuals.com>