



4 x 4 USB DJ Audio Interface



User Guide

synchroscience
by M-AUDIO®

Introduction 3

What's in the Box? 4

Conectiv Features 4

Minimum System Requirements 5

Operating Systems 5

 Windows. 5

 Macintosh 5

Hardware 5

 Windows. 5

 Macintosh 5

Software Installation 6

Controls and Connectors 6

 Top Panel 6

 Rear Panel 7

 Front Panel 7

Hardware Connections 8

Using Conectiv 9

 Understanding Conectiv's Audio Routing 9

 Headphone Monitoring 11

 Using Conectiv with SynchroScience Torq and Other DJ Programs 11

 Using Control Vinyl or CDs to Control Your DJ Software. 11

 Using Your Computer as an Effects Processor 12

 Standalone Phono Preampfier 12

 Standalone Microphone Preampfier 12

The Software Control Panel 13

 PC. 13

 Mac 13

Troubleshooting 14

 Standalone Mode. 14

 Using Conectiv with a Computer 14

Product Specs 16

Warranty Terms and Registration 17

 Warranty Terms 17

 Warranty Registration. 17

Introduction

1

Thank you for choosing the SynchroScience Conectiv USB audio interface. Conectiv takes advantage of the convenience and dependability of the Universal Serial Bus (USB) to provide you with a versatile interface that can be used both live on stage and in the studio. The interface's sleek, lightweight, and portable design makes it the perfect travel companion for active computer-based DJs, musicians, and producers. Conectiv attaches to your Mac or PC with a single USB cable and eliminates the need to open your computer to install any cards. Since the interface draws power from the host computer, it requires no external power. This means you can easily record and mix from anywhere.

Conectiv was created with the software-based DJ, producer, and artist in mind. With its high quality components, flexible audio routing, and easy-to-use interface, Conectiv perfectly complements your computer's DJ or recording software. The unit lets you simultaneously record four input channels (two stereo pairs) while playing back four output channels. Conectiv's 1/4" and RCA inputs support mic, line, and phono levels, respectively; allowing you to connect any dynamic microphone, line level source (such as CD or MP3 players) or turntable. The USB interface carries audio signals to and from your computer with minimal latency and the high-powered headphone output lets DJs and live performers hear their work in even the noisiest clubs and stages. All of these features come together to make Conectiv the perfect tool for recording, producing, and performing your musical works.

Even if you're an experienced DJ, musician, or digital recording enthusiast, please take a moment to read through this User Guide and familiarize yourself with Conectiv's unique features. You may also want to refer to your audio software's documentation to better understand how Conectiv can be integrated with the application. Your experience and enjoyment with Conectiv will be greatly enhanced by a good working knowledge of your equipment.

Your Conectiv interface comes bundled with SynchroScience Torq, an advanced DJ software application designed to integrate seamlessly with Conectiv. While you are free to use this interface with any ASIO- or Core Audio-compatible software, this guide uses Torq for some of the illustrations and examples. It is therefore recommended that you install Torq so you can follow along with the examples in this guide.

What's in the Box?

2

Your Conectiv package contains the following:

- Conectiv USB audio interface
- SynchroScience CD-ROM containing drivers, control panel software, documentation, and Torq DJ application
- USB cable

Conectiv Features

3

Conectiv has the following features:

- 4-in/4-out audio streaming over a USB 1.1 connection
- RCA inputs supporting phono and line-level sources
- 1/4" microphone input with dedicated gain control knob
- Mix knobs for blending between inputs and audio software outputs
- 1/4" headphone output with high-powered amplifier
- Cue knob for blending between headphone sources
- Cue split switch for various headphone monitoring options
- Master output level knob
- DC power jack for use when bus power is not available
- Driver support for ASIO (Windows XP) and Core Audio (Mac OS X 10.3.9 / 10.4.7 or later).

Minimum System Requirements

4

Operating Systems

Windows

Conectiv is supported under Windows XP with Service Pack 2 or later. It is not supported under Windows 2000, Windows 98, or Windows ME. Visit the Windows update web pages to make certain you have the most current updates and fixes supplied by Microsoft.

Macintosh

Conectiv is supported under Mac OS X version 10.3.9 / 10.4.7 or later. Earlier versions of the operating system are not supported.

Hardware

Windows*

- Pentium III 500 MHz (higher CPU speed may be necessary for laptops)
- 256MB RAM
- Windows XP (SP2)
(Windows 2000, 98, ME, & NT not supported)

Macintosh*

- Macintosh G3**600 / G4**667MHz (higher CPU speed may be necessary for laptops)
- 256MB RAM
- OS X 10.3.9 / 10.4.7 or later (earlier versions of the Macintosh operating system are not supported)

*SynchroScience suggests checking the minimum system requirements for your software, as they may be greater than the above specifications.

**G3/G4 accelerator cards are not supported; native USB ports required.

Software Installation

5

You must install drivers in order for Conectiv to operate properly. Please consult the included Quick Start Guide for installation instructions.

Once the drivers are installed, you may need to configure your audio software to route signals to and from Conectiv. Refer to your program's user guide to learn how to do this.

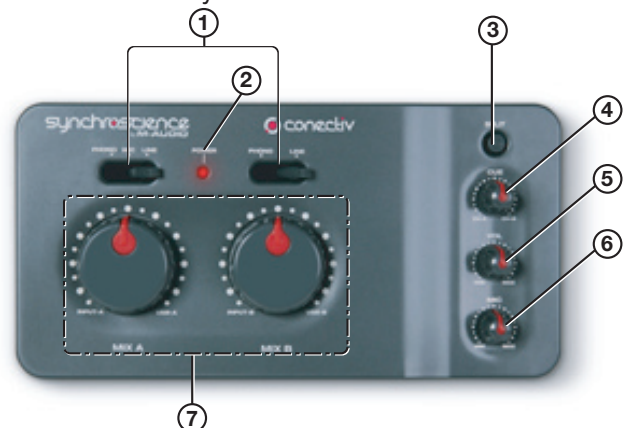
Note: Windows XP and Mac OS X will recognize the Conectiv interface as a generic USB audio device if it is connected before you install the drivers. Operation without drivers is not recommended because some of Conectiv's features will not be accessible in this mode. If you have already connected the interface to your computer, make sure to unplug it before beginning with the driver installation.

Controls and Connectors


6

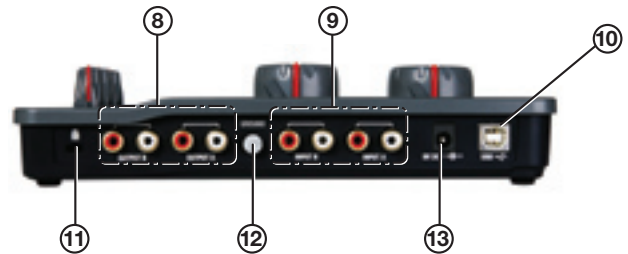
Top Panel

1. **Source Selector (PHONO, MIC, LINE)** – These switches select the input source for each stereo channel of Conectiv. Note that both stereo channels have phono and line-level inputs. However, only Channel A has an additional Mic input, allowing you to select a dynamic microphone connected to the Mic Input [#15].
2. **Power Indicator LED (POWER)** – This red LED will illuminate when the interface is receiving power.
3. **Split Switch (SPLIT)** – This switch selects between Normal and Split monitoring modes for the headphone output. Press this switch to engage Split monitoring or leave the switch in the Up position for normal monitoring. For more information about these two modes, see the section entitled “Headphone Monitoring” in Chapter 8.
4. **Cue Knob (CUE)** – Conectiv has two stereo channels, and this knob lets you blend how much of each channel you'd like to hear in your headphones. This knob is covered in greater detail in the “Headphone Monitoring” section of Chapter 8.
5. **Headphone Volume Knob (VOL)** – This knob controls the volume of the headphone output.
6. **Mic Gain (MIC)** – This knob controls the gain (volume) of the microphone input.
7. **Mix Knobs (MIX)** – These knobs allow you to set the source of each stereo output. To find out more about this knob, see the section entitled “The Mix Knobs” in Chapter 8.





Rear Panel

- 8. **RCA Outputs (OUTPUT A, OUTPUT B)** – These are Conectiv's main outputs. Connect these RCA jacks to a DJ mixer, amplified speakers, or another destination. The audio source for these outputs is determined by the Mix knobs (7).
- 9. **RCA Inputs (INPUT A, INPUT B)** – These RCA input pairs accept stereo signals from a variety of devices including CD players and turntables. Use the Source Selector switches (1) to select what type of device you've connected to each of these input pairs.
- 10. **USB I.I Port (USB)** – The USB port carries digital audio to and from Conectiv and provides power to the interface. Connect this jack to an available USB port on your computer.
- 11. **Kensington Security Slot**  – This jack is compatible with Kensington security cables to protect your device from theft.
- 12. **Grounding Connector (GROUND)** – If you are using turntables, ground them by attaching their ground wire to this connector.
- 13. **DC Power Jack (9V DC)** – Conectiv can be powered using an optional DC power supply. This input only needs to be used when your computer cannot supply sufficient power over the USB bus, or when Conectiv will be used as a standalone dual phono preamp.



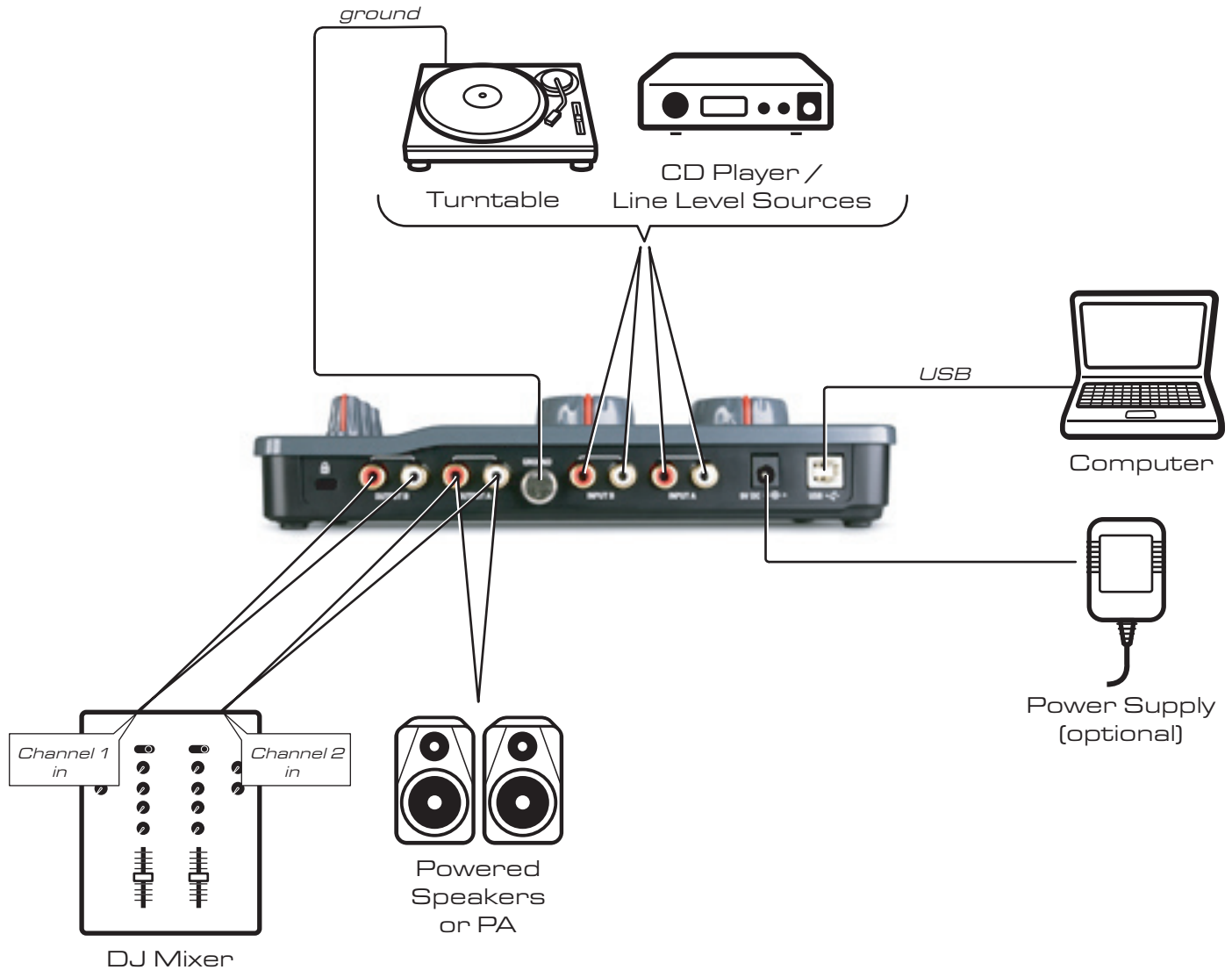
Front Panel

- 14. **Headphone Jack**  – Connect your headphones to this 1/4" jack. The volume level of this output is controlled by the Volume knob (5) and the source is determined by the Cue knob (4).
Be careful when connecting headphones to this output. Conectiv features an extremely powerful headphone amplifier designed to help DJs hear over the noisiest clubs and stages. Because of the high power design, the output may be extremely loud.
- 15. **1/4" Microphone Input**  – This jack accepts a standard dynamic microphone with a 1/4" TS plug. The Mic knob (6) controls the gain level of this input.



Hardware Connections

7



1. Connect Conectiv's RCA Outputs to your amplifier, powered monitors, or mixer.
2. Connect your stereo headphones to Conectiv's front-panel Phones output.
3. Connect a microphone to the 1/4" Microphone input on the front panel of the interface.
4. Connect your turntables or line-level sources to Conectiv's RCA inputs.
5. Connect Conectiv's USB port to an available USB port on your Mac or PC computer with a USB cable.
6. If your computer cannot supply sufficient USB bus power, or if you are using Conectiv in standalone mode (without a computer), connect a DC power adapter to the Power jack (13) on the rear of the interface. Conectiv requires a center-positive 9V DC 500 mA power supply.

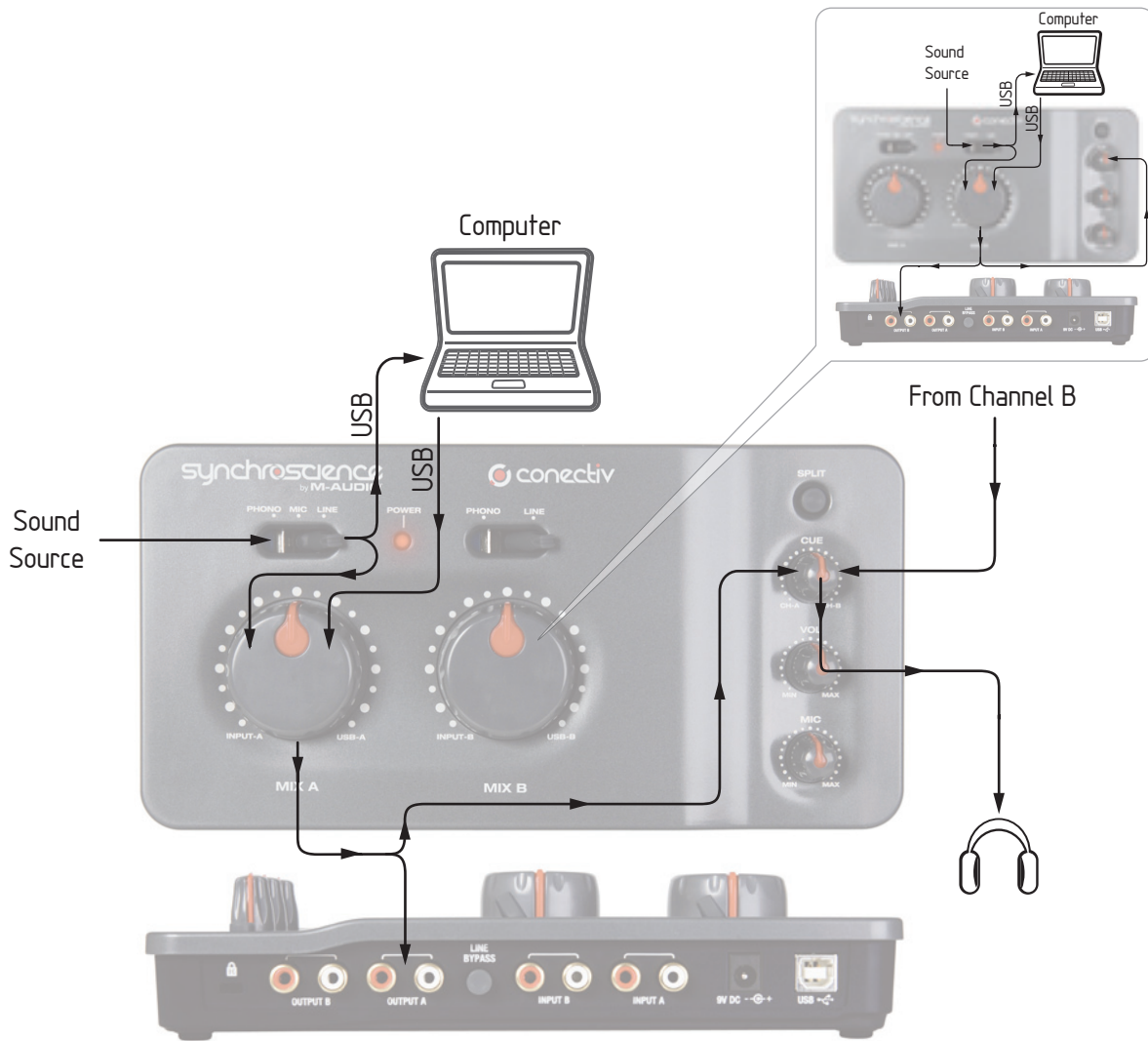
If you are using turntables, be sure to connect each turntable's ground wire to the grounding connector (12) on the rear of the interface.

Using Conectiv 8

Conectiv can be used in a variety of ways and several of these scenarios are outlined below. The first section of this chapter will give you an overview of how signals pass through the interface; remaining sections cover specifics and include useful tips. If you require additional help, check the M-Audio website for more tips, tutorials, and FAQs.

Understanding Conectiv's Audio Routing

Conectiv's flexible audio routing allows it to be used in a variety of different situations. Take a look at the diagram below to see how signals pass through the interface:



If we follow input signal A starting at the sound source, the first object we encounter is the Source Selector switch (1). This switch sets the input sensitivity and determines which input source (mic, line, or phono) will pass to the next stage of the interface.

Next, the signal is doubled and sent to two different destinations at the same time. The first part is routed through the USB port to your computer for recording or software processing; the other part of the signal is sent to Mix knob A (7). The function of this knob is covered in detail later in this chapter. At this point, a new audio source is introduced into your signal path: output A of your audio software. This signal comes into the interface through the USB port and is sent to Mix knob A (just like audio input A described earlier in this paragraph).

Mix knob A lets you crossfade between your audio sources (input A and your audio software's output A) and sends the blended signal to RCA output pair A (8) on the rear of the interface.

Simultaneously, the blended signal from Mix knob A is also sent to the Cue knob (4).

In parallel, input signal B passes the same stages in its dedicated signal path and also sends the blended signal from Mix knob B to the Cue knob (4). The Cue knob lets you blend between channels A and B to create a special "headphone mix" for the DJ (this feature is covered in greater detail later in this chapter).

The preceding paragraphs describe Conectiv's entire signal path from input to output. We recommend that you take a moment to really understand the various ways signals can be routed through the interface. Having a good working knowledge of how signals are routed within the interface will enable you to adapt Conectiv to any situation without having to memorize specific settings.

The Mix Knobs

The Mix knobs are a key part of Conectiv's flexibility. These knobs function as crossfaders that let you blend between your inputs (mic, phono, line) and your audio software's outputs on each channel. In other words, when the knobs are turned counterclockwise (to the CH-A or CH-B positions), only your microphone, phono, or line-level input is heard from Conectiv's associated outputs. When the knob is turned clockwise (to the USB-A or USB-B positions), only your audio software's outputs are heard. When the Mix knob is set to the twelve o'clock position, both your line input and your computer's output are heard in equal proportion.

In some cases, you'll need to turn the Mix knob clockwise. For example, when you're mixing music played off of a computer, you'll need to set these knobs clockwise in order to hear the computer's output. In other cases, you must set the knob counterclockwise to hear the inputs (such as when you're DJing off of turntables or CD players). In certain cases, you'll need to use this knob to blend back and forth between your inputs and your audio software's outputs. For example, when using your computer as a DJ effects processor (see below), this knob will act as your wet/dry effects knob.

Headphone Monitoring

Conectiv offers two different headphone (or “cue”) monitoring options for DJs, which are described below. Use the Split switch (3) to select which mode you’d like to use. Press the switch to activate Split mode or leave the switch in the Up position to remain in Normal monitoring mode.

- **Normal Mode:** In this mode, channels A and B are heard in stereo through your headphones. The Cue knob (4) determines the balance of channel A to channel B. In other words, when the Cue knob is turned fully counter-clockwise, only Channel A will be heard. Conversely, when the Cue knob is turned fully clockwise, only Channel B will be heard. When the knob is in the twelve o’clock position, both channels will be heard in equal proportion.
- **Split Mode:** In Split mode, Channel A is summed to mono and played on the left side of your headphones while Channel B is summed to mono and played on the right side. The Cue knob (4) adjusts the balance between the two channels in the same way as in Normal Mode. This style of cueing may make it easier to determine which track (on the left or right) is out of time when you are beat-matching.

The mode you choose depends entirely on your personal taste. Some DJs are most comfortable monitoring in Normal mode whereas others prefer Split mode.

Using Conectiv with SynchroScience Torq and Other DJ Programs

Conectiv integrates seamlessly with popular DJ applications like SynchroScience’s Torq or Native Instruments’ Traktor and provides an ideal hardware interface for these programs. These applications can be set to either Internal mode (mixing and cueing takes place entirely within software) or External mode (an external DJ mixer is used for mixing and cueing) and Conectiv can be used with either configuration.

- **Internal Mode:** When your software is set to Internal mode, its master output is sent to one stereo channel of Conectiv while the other stereo channel is heard only in the DJ’s headphones (used for cueing up the next song). In this scenario, the Mix knobs must be turned fully clockwise so that the output of your DJ software can be heard. The Cue knob will then allow you to blend between the main output (CH-A, which your audience hears) and the cue output (CH-B, which only you hear on your headphones).
- **External Mode:** When your software is set to external mode, your program plays back your music while an external DJ mixer is used for mixing and cueing. In this scenario, your software plays music into both channels A and B of Conectiv. These channels are then fed into separate channels on your DJ mixer which handles all mixing and cueing. In this configuration, both Mix knobs must be turned clockwise in order to hear the output of your software.

Using Control Vinyl or CDs to Control Your DJ Software

If your DJ software supports the use of special control vinyl or CDs through a standard audio interface in order to control playback of your audio files, connect your turntables or CD players to Conectiv’s RCA inputs, set the Source Selector switches to Phono or CD, and turn the Mix knobs fully clockwise. It’s important to set the Mix knobs fully clockwise so that you only hear your computer’s output and not the actual control signal contained on the records and CDs.

You’ll need to configure your DJ software to make use of these control signals. Refer to your software’s documentation for instructions on how to do this.

NOTE: When using control vinyl or control CDs, be sure that the left and right channel outputs of your turntable or CD player are correctly routed to Conectiv’s left and right inputs. If your channels are reversed, Torq will play your music backward.

Using Your Computer as an Effects Processor

Conectiv's ability to simultaneously send and receive four channels of audio over USB allows you to use your computer as a powerful effects processor. This is done by sending your audio sources (turntables or CD players) through Conectiv to software-based effects on your computer. Your effected signal is then blended back into Conectiv's output path using the Mix knobs. Many DJs find this feature to be a gold mine of new and interesting effects that they can use during a performance, especially since completely different effects can be applied to Conectiv's two channels.

Start by connecting your turntables or CD players to Conectiv's RCA inputs. Next, connect the RCA outputs to a DJ mixer, powered speakers, or another destination of your choosing. On your computer, run Torq or any ASIO-compliant program that can process VST plug-ins in real-time. Make sure that Conectiv's inputs are routed to Torq's inputs, and that Torq's outputs are routed to Conectiv's outputs. Activate Torq's "Line" input setting (refer to Torq's User Guide for more information about this feature). Finally, enable Torq's built-in effects or load third party VST effect plug-ins.

Your computer is now processing audio sources and the Mix knobs are acting as "wet/dry" controls for the selected effects. Turning a Mix knob counter-clockwise will let you hear only your turntable or CD player source while turning the knob fully clockwise will let you hear only the effected signal. Setting the knob to the twelve o'clock position will blend the source and processed signals in equal proportion.

Standalone Phono Preamplifier

Conectiv can function in standalone mode (without a computer) as a dual-phono preamplifier. In this scenario, simply hook up your turntables to Conectiv's RCA inputs and connect Conectiv's outputs to an amplifier, powered speakers, or other device of your choosing.

Make sure that the Mix knobs are turned fully counter-clockwise and that the Source Selector switches (1) are set to Phono. Note that in this configuration, Conectiv must still be powered through either the USB bus or the DC power input.

Standalone Microphone Preamplifier

Conectiv can be used as a single-channel microphone preamplifier. Simply hook up your dynamic microphone to Conectiv's 1/4" microphone input and connect Conectiv's Channel A output to a mixer, recorder, or other device of your choosing (Channel B is not used in this scenario).

Make sure that the Channel A Mix knob is turned fully counter-clockwise and that Channel A's Source Selector switch (1) is set to Mic. The Mic knob (6) controls the input gain of your microphone.

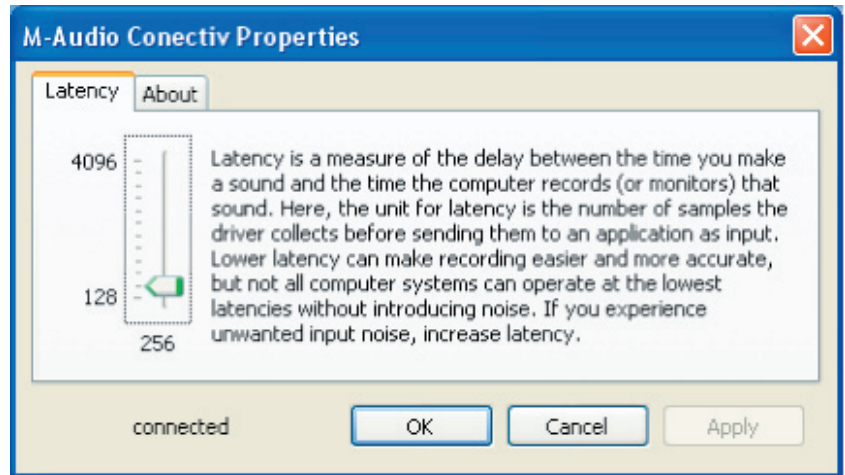
Note that in this setting, Conectiv must be powered from either the USB bus or the DC power input in order to function correctly.

The Software Control Panel 9

Conectiv's control panel is designed to be simple and easy to use.

PC:

For PC users, Conectiv's audio buffer size is displayed on the "Latency" tab while additional information such as the audio driver and device firmware versions are displayed on the "About" tab. To adjust the audio buffer size, simply drag the slider and press the "Apply" button. Please note that this parameter cannot be changed while an audio application is running.



Mac:

For Mac users, the control panel simply displays version numbers of software components such as the audio driver and device firmware along with links to useful sections of the M-Audio website. Buffer size changes must be made through the host application on the Macintosh operating system.



Troubleshooting

10

Conectiv is a high-performance, professional-quality interface that has been tested under a wide variety of conditions. Despite our thorough testing, Conectiv can be used in limitless situations and certain scenarios may result in unexpected performance. This section will highlight some of the most common difficulties users may experience and provide tips to remedy these problems. First, we'll cover issues that might arise when the interface is used in standalone mode. Next, we'll discuss issues that might occur when Conectiv is used with a computer.

Standalone Mode

If you are having difficulty using Conectiv as a standalone device:

- Verify that the interface is receiving power and that the red Power LED is illuminated. In standalone mode, the interface can be powered through either the USB bus or the DC power input.
- Ensure that the Mix knobs are turned fully counter-clockwise. In standalone mode, these knobs must always remain fully counter-clockwise for correct audio routing and optimal sound quality.
- Make sure your audio source (turntable, CD player, microphone, etc.) has been properly connected to the interface.
- Make sure that the Input Source selector switch has been set correctly.
- Verify that your music source is outputting a proper signal.
- Verify that your amplifier, powered speakers, or other audio destination is working correctly.

Using Conectiv with a Computer

First and foremost: if you're using Conectiv with your PC or Mac, we recommend that you avoid connecting too many USB devices to the same port on the computer. USB is a dependable protocol that is well suited for digital audio. Nevertheless, it is important to remember that audio and multimedia streaming place considerable demands on your processor and use a significant amount of USB's available bandwidth. Although it is theoretically possible to connect many devices to one USB port, this might cause complications and degrade your audio performance.

If you have reduced your number of USB devices and continue to have trouble getting audio in or out of Conectiv, please check the following:

- Verify that Conectiv's drivers are properly installed.
 - In Windows XP, go to the control panel and double-click the System icon (under Performance and Maintenance if you are in Category view).
 - Select the Hardware tab and click the Device Manager button.
 - Click the plus sign ("+") next to Sound, Video and Game Controllers, and locate the Conectiv listing. If you see a question mark or exclamation point next to it, or if you don't see it listed, you may need to reinstall the driver software.

- Make sure your audio software has been set up to use the interface. Open your application's audio settings page and verify that Conectiv's ASIO, WDM, or Core Audio drivers have been selected.
- Ensure that each channel's Mix knob is not turned fully counter-clockwise as that will mute the computer's output.
- Double-check your audio connections and cables to make sure everything is plugged in correctly.
- Make sure your amplifier or powered speakers are working correctly.

If Conectiv is sending and receiving audio, but you are hearing clicks and pops:

- Make sure your input and output levels are not too loud, as this can cause distortion and clipping.
- Try increasing the buffer size. Larger buffer sizes will result in higher audio latencies, but will improve system performance and resolve many clicking and popping issues. Increasing the buffer size is often helpful in older or slower systems.
- If you are using a USB hub, try connecting the interface directly to your computer.

Product Specs

11

48kHz sampling rate, 16-bit unless otherwise stated

Digital Audio Interface Specifications	
Mic Inputs (A/D)	
Input Impedance	340KOhms
Maximum Input Level	+4.1 dBu (1.243 Vrms) @ minimum gain
SNR	-98 dB, A-weighted
Dynamic Range	98 dB, A-weighted
THD+N	0.00686 % (-83.3 dB) @ -1 dBFS, 1 kHz
Frequency Response	20 Hz to 20 kHz, +/- 0.2 dB @ 48 kHz sample rate
Pre-amp Variable Gain	>25 dB
Phono Inputs (A/D)	
Input Impedance	48KOhms
EQ	RIAA curve
Gain	43 dB
Line Inputs (A/D)	
Input Impedance	48k Ohms
Maximum Input Level at minimum gain	+10 dBV (3.162 Vrms), unbalanced
Channel-to-Channel Crosstalk	< -100 dB @ 1 KHz
SNR	-97 dB, A-weighted
Dynamic Range	97 dB, A-weighted
THD+N	0.00557 % (-85.1 dB) @ -1 dBFS, 1 kHz
Frequency Response	20 Hz to 20 kHz, +/- 0.2 dB @ 48 kHz sample rate
Line Outputs (D/A)	
Output Impedance	100 Ohms unbalanced
Maximum Output Level	+11.4 dBV (3.711 Vrms), unbalanced
Channel-to-Channel Crosstalk	< -109 dB @ 1 KHz
SNR	-100 dB, A-weighted
Dynamic Range	95 dB, A-weighted
THD+N	0.00390 % (-88.2 dB) @ -1 dBFS, 1 kHz
Frequency Response	20 Hz to 20 kHz, +/- 0.1 dB @ 48 kHz sample rate
Headphone Output	
Maximum Output	0 dBV (1 Vrms, 2.8 Vpp) into 30-ohms
Working Range	16 to 80 ohms

Warranty Terms and Registration

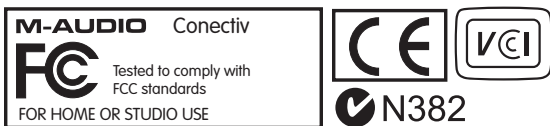
12

Warranty Terms

M-Audio warrants products to be free from defects in materials and workmanship, under normal use and provided that the product is owned by the original, registered user. Visit www.m-audio.com/warranty for terms and limitations applying to your specific product.

Warranty Registration

Thank you for registering your new M-Audio product. Doing so immediately both entitles you to full warranty coverage and helps M-Audio develop and manufacture the finest quality products available. Register online at www.m-audio.com/register to receive FREE product updates and for the chance to win M-Audio giveaways.



© 2006 Avid Technology, Inc. All rights reserved. Product features, specifications, system requirements and availability are subject to change without notice. Avid, M-Audio, Conectiv, SynchroScience and Torq are either trademarks or registered trademarks of Avid Technology, Inc. All other trademarks contained herein are the property of their respective owners.

WARNING: This product contains chemicals, including lead, known to the State of California to cause cancer, and birth defects or other reproductive harm. ***Wash hands after handling.***

M-Audio USA 5795 Martin Rd., Irwindale, CA 91706	
Technical Support	
web:	www.m-audio.com/tech
tel (pro products):	(626) 633-9055
tel (consumer products):	(626) 633-9066
fax (shipping):	(626) 633-9032
Sales	
e-mail:	sales@m-audio.com
tel:	1-866-657-6434
fax:	(626) 633-9070
Web	www.m-audio.com

M-Audio U.K. Floor 6, Gresham House, 53 Clarendon Road, Watford WD17 1LA, United Kingdom	
Technical Support	
e-mail:	support@maudio.co.uk
tel:(Mac support):	+44 (0)1765 650072
tel:(PC support):	+44 (0)1309 671301
Sales	
tel:	+44 (0)1923 204010
fax:	+44 (0)1923 204039
Web	www.maudio.co.uk

M-Audio France Floor 6, Gresham House, 53 Clarendon Road, Watford WD17 1LA, United Kingdom	
Renseignements Commerciaux	
tel :	0 810 001 105
e-mail :	info@m-audio.fr
Assistance Technique	
PC :	0 820 000 731
MAC :	0 820 391 191
Assistance Technique	
e-mail :	support@m-audio.fr mac@m-audio.fr
fax :	+33 (0)1 72 72 90 52
Site Web	www.m-audio.fr

M-Audio Germany Kuhallmand 34, D-74613 Ohringen, Germany	
Technical Support	
e-mail:	support@m-audio.de
tel	+49 (0)7941 - 9870030
fax:	+49 (0)7941 98 70070
Sales	
e-mail:	info@m-audio.de
tel:	+49 (0)7941 98 7000
fax:	+49 (0)7941 98 70070
Web	www.m-audio.de

M-Audio Canada 1400 St-Jean Baptiste Ave. #150, Quebec City, Quebec G2E 5B7, Canada	
Technical Support	
e-mail:	techcanada@m-audio.com
phone:	(418) 872-0444
fax:	(418) 872-0034
Sales	
e-mail:	infocanada@m-audio.com
phone:	(866) 872-0444
fax:	(418) 872-0034
Web:	www.m-audio.ca

M-Audio Japan アビッドテクノロジー株式会社 エムオーディオ事業部 : 〒460-0002 愛知県名古屋市中区丸の内 2-18-10 Avid Technology K.K. : 2-18-10 Marunouchi, Naka-Ku, Nagoya, Japan 460-0002	
カスタマーサポート (Technical Support)	
e-mail :	win-support@m-audio.jp
e-mail (Macintosh 環境専用):	mac-support@m-audio.jp
tel :	052-218-0859 (10:00~12:00/13:00~17:00)
セールスに関するお問い合わせ (Sales)	
e-mail:	info@m-audio.jp
tel:	052-218-3375
fax:	052-218-0875
Web:	www.m-audio.jp

Free Manuals Download Website

<http://myh66.com>

<http://usermanuals.us>

<http://www.somanuals.com>

<http://www.4manuals.cc>

<http://www.manual-lib.com>

<http://www.404manual.com>

<http://www.luxmanual.com>

<http://aubethermostatmanual.com>

Golf course search by state

<http://golfingnear.com>

Email search by domain

<http://emailbydomain.com>

Auto manuals search

<http://auto.somanuals.com>

TV manuals search

<http://tv.somanuals.com>