



BY



*mach speed technologies*

AMERICAN OWNED AND OPERATED

**Model T3000**

# USER'S MANUAL

**WWW.MACHSPEED.COM**

Download from [Www.Somanuals.com](http://Www.Somanuals.com). All Manuals Search And Download.

**Congratulations on purchasing your Trio Personal Media Player! To get the most out of your purchase, please take the time to carefully read through this manual.**

## **Foreword**

If any problems occur during while using your Trio, please feel free to contact Mach Speed technical support at 580-272-0035, or sending an email to

**[mssupport@machspeed.com](mailto:mssupport@machspeed.com)**.

Thank you for your support and cooperation!

Mach Speed Technologies bears no responsibility for any damage or loss of personal data due to misuse of software and/or hardware, damage to the player caused by human factors, replacement of battery, or other unforeseen circumstances. To prevent loss of your data, please backup your data regularly.

Information in the manual is subject to change without notice and is subject to copyright protection. Copying or otherwise reproducing this material without prior written consent is prohibited.

Due to Firmware changes, some of the pictures and functions described in this manual may not be the same as are included with your player.

**Note:**

- The playback times listed refer to the maximum playback times possible, using the best power savings. The actual playback time may differ as adjustments to screen brightness; power savings modes, volume, etc are made.
- As there are many brands of Micro SD cards in market, using different quality and speed standards. Therefore, we are unable to guarantee that our product will be compatible with all types or brands of Micro SD cards, but will be compatible with those Micro SD cards with mainstream specifications in the market, and we will constantly strive to provide the largest selection of cards possible.
- As parameters such as formats, bitrate, codecs, framerates, and resolutions differ, the player will not be compatible with all listed files. If you are experiencing issues playing your files on this player, we recommend using a supported conversion tool to reconvert your file to the specifications of the device.

**Caution**

Modifications not approved by the party responsible for compliance could void the user's authority to operate the equipment.

NOTE- This equipment has been tested and found to comply with the limits for Class B Digital device, pursuant to part 15 of the FCC rules. These limits are designed to provide reasonable protection against harmful interference in a residential installation. This equipment generate, uses and can radiate radio frequency energy and, if not

installed and used in accordance with the instructions, may cause harmful interference to radio or telephone reception, which can be determined by turning the equipment off and on, the user is encouraged to try to correct the interference by one or more of the following measures:

Reorient or relocate the receiving antenna.

Increase the separation between the equipment and the receiver

Connect the equipment to an outlet on a circuit different from that to which the receiver is connected.

Consult the dealer or an experienced radio/TV technician for help.

### **Caution**

- Do not use the player in exceptionally cold or hot, dusty, damp or dry environments.
- Do not drop, strike, or throw your player. Physical damage to your player will void ALL warranties.
- Please charge your battery when
  - Battery power icon shows an empty icon;
  - The system automatically shuts down and the power is soon off when you switch on the unit once again;
  - There is no response if you operate on any key
- Please always follow the correct disconnect procedures for your operating system. Do not disconnect power abruptly when the player is being formatted or in the process of uploading or downloading files.

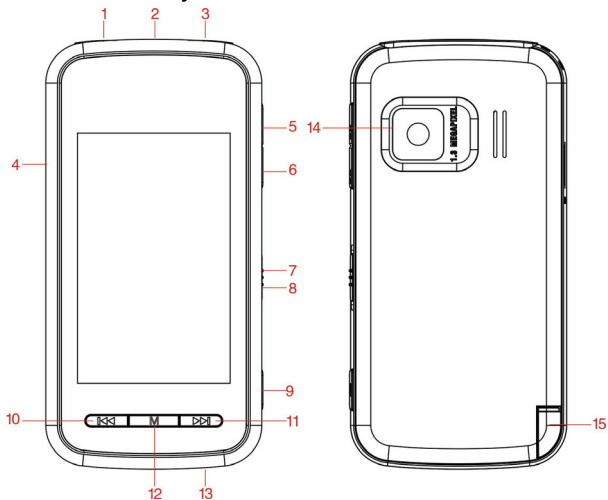
Otherwise it may lead to file corruption, firmware failure, and even hardware damage.

- Please ensure that the player is powered off before inserting or removing the Micro SD Card
- We are not liable for any loss of data stored on this device.
- Please do not dismantle this player. Any disassembly not done by an authorized technician will void ALL warranties
- This product and manual are change without subject to notice.

#### **Features:**

- 3.0 inch Full Color TFT LCD Screen, 400x240 native resolution
- Touch Screen Controls
- 1.3MP Digital Video Camera
- Plays Music: Supports MP3, WMA (non encrypted) WAV, FLAC, OGG, and MP2 audio formats
- Plays Video: Supports AVI, RM, RMVB, WMV (non encrypted), 3GP, and FLV video formats
- Supports JPG, GIF, and BMP format image files
- Supports ID3 and LRC files
- High Speed USB 2.0 Interface
- Built in rechargeable battery
- Multiple language support

## Get to Know Your Player



1. Earphone Jack

2. USB port

3. Earphone Jack

4. Micro SD card

5. VOL-

6. VOL+

7. power

8. Hold

9. Camera Button

10. Previous

11. Next

12. menu

13. MIC

14. Camera

15. Stylus

## Basic Operations

### Powering on

To power the player on, slide the power switch to the UP position and hold it there for 5 seconds or until the welcome screen is displayed.

### Powering off

To power the player on, slide the power switch to the UP position and hold it there for 5 seconds or until the goodbye screen is displayed.

### Locking and Unlocking the touchscreen

To lock the touchscreen, slide the power switch into the DOWN position. To unlock the touchscreen, return the power switch to the neutral or middle position.

### Charging the Player

To charge the player, simply connect it to a powered USB port, or external AC adapter. If you choose to use a third party adapter, please ensure that it is 5V and between 350 and 500mA output.

When you connect the player to your computer, you will see a screen displaying the USB symbol as well as "Charging". When connected to a charger, you will see the "Charging" screen.

### Inserting and removing the Micro SD card

**Inserting:** Ensure that the player is powered off, and disconnected from the

computer. Hold the Micro SD card face up (side with words aligned in the opposite direction of the display screen), and slide the card into the socket on the player, slightly past flush. When you hear the card click into place, you can access the card.

**Removing:** Ensure that the player is powered off, and push the SD card just past flush. When you hear the click, release pressure, and the card will slide out.

**Caution:** Please ensure that the power is off when you connect or disconnect your SD card, or damage may occur to the player or your card.



Loading files

### Using Windows Media Player

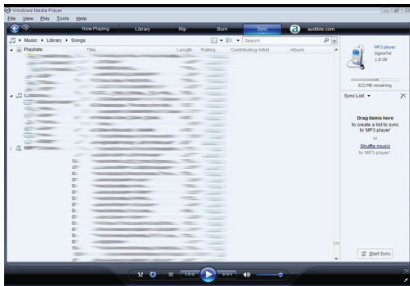
*(Note: you must use Windows Media Player 10 or later to use this feature.)*

*(Note: this player does not support DRM encrypted audio or video files, such as those downloaded from the Windows Media Player "Overdrive" download service.)*

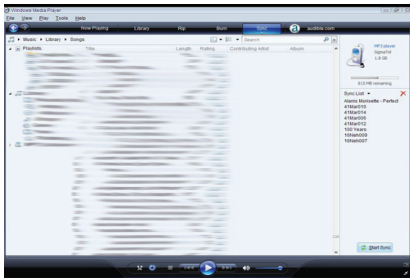
1. Open Windows Media Player and connect the player to a working USB port. Windows Media player will prompt you with a setup screen asking you to name the MP3 player.



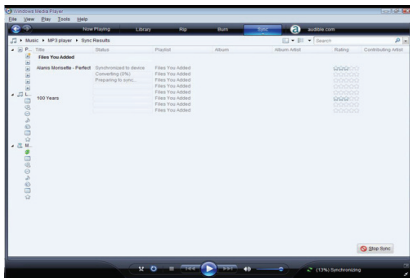
2. Once you have named your MP3 player, select Finish, and your Windows Media Player will open to the Sync tab.



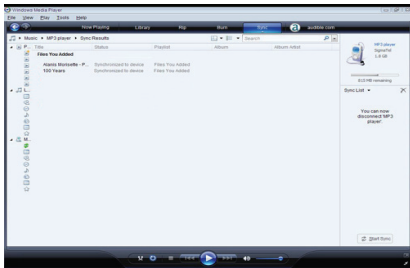
3. Drag your music to the sync list (on the right of the screen) from the list on the left. Once you have selected the music you wish to add to the player, press Sync.



4. Windows Media player will load the songs on to your player.



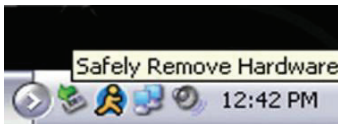
5. Once all the songs you have added are synced to the unit, and Windows Media Player says that is safe to disconnect your MP3 player, disconnect the device.



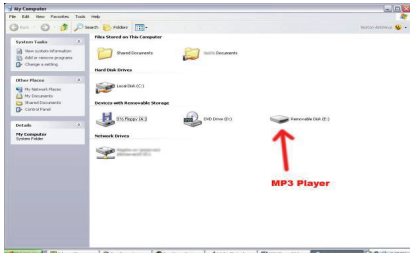
## COPY AND PASTE

Note- This alternate method is used to load videos, pictures, and ebook files as well as audio files

1. Connect the MP3 player to a working USB port.
2. When the unit is connected to your computer, it will create a gray and green icon in the system tray (lower right hand corner of your desktop). The icon will be called safely remove hardware.



3. Go to the “My Computer” section of your computer. In there you will find a section called “devices with removable storage”

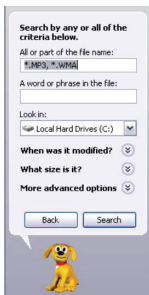


4. Locate the drive created by the unit, generally just called Removable Disk, with a letter in Parenthesis. Drive letters vary depending on your system configuration.
5. Open the drive by either double left clicking on the drive itself, or by right clicking to open the option menu then left click on the desired drive.

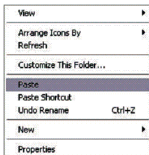
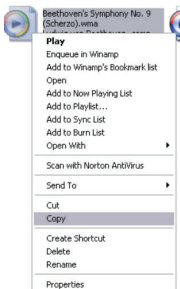


6. Locate the music stored on your computer. Generally this is stored in the "My Music" folder of your computer.

NOTE: if you are unable to locate the music on your computer, click on start, search, files and folders, then search for "\*.MP3, \*.WMA".



7. Once you have located the song files, you can right click on the song itself, and select “copy”. Open the removable disk drive, right click on in the empty space, and select Paste. This will transfer the song on to your player.



8. Repeat step 7 for as many songs as you want to copy on to the unit.

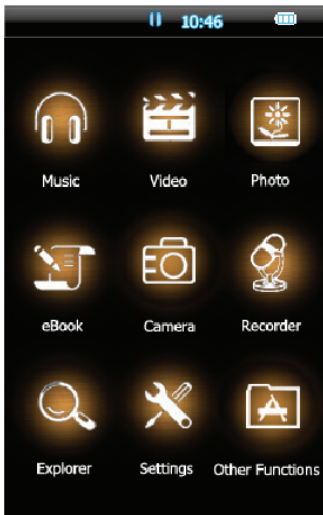
**NOTE: MAC Computers**

When connected to your MAC computer, the device will act as a removable drive.

Simply drag your files to the device.

## Main Menu

Once you power the player on, the Main Menu will be displayed with icons for the different modes of the player: Music, Video, Camera, eBook, Photo, Recorder, Explorer, Settings, and Other Functions. Tap the icon corresponding with the mode you wish to enter.

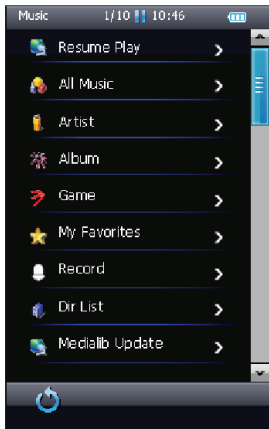




## Music Mode

- Note- this player supports audio files in MP3, WMA (non encrypted) WAV, FLAC, OGG, and MP2 formats. If your audio files are not in one of these formats, the files will not play.

When you tap the Music icon on the Main Menu, you will enter the Music Selection screen as Displayed below.



This screen will allow you to select the music you wish to play, either using ID3 tag

selection (artist, album, genre, etc) or manually by selecting the “Dir List” option. Once you have entered the music playback mode, your audio file will begin playing automatically. Tap the PLAY icon to pause the file, and tap it again to resume playback. Tapping the Next or Previous Icons will skip to the next or previous tracks. Tap and hold the Next or Previous Icons to fast forward or rewind the current track.

### **Volume Adjustment**

To Adjust the volume on the player, simply press the V+ or V- buttons to increase or decrease the volume. Alternatively, you can tap the speaker icon on the screen, and slide the volume adjustment bar to the desired level.

### **Music Submenu**

On the Music Playback screen, tap the Music Submenu Icon to enter the Music Submenu

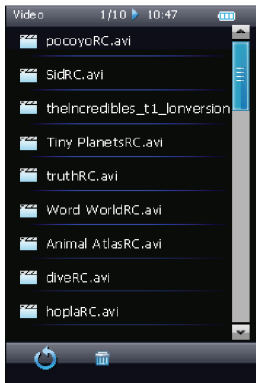
- Repeat Mode- Allows you to select your Repeat mode. select from One, Repeat, All, Repeat All, and Intro modes.
- Play Mode allows you to select whether to play the files in order, or to shuffle the files. Please note however, that this player will only shuffle files within a single directory or folder.
- MSEQ allows you to select one of three special equalizer settings: 3D, BASS, or LEQ
- EQ Select allows you to activate one of 6 standard equalizer settings, a special MSEQ setting, or a user defines equalizer setting
- Display allows you to select whether you want to display the ID3 information of your songs, Lyrics, or a frequency chart while your audio files are playing.

Please note that to display lyrics, the lyric files (.lrc) must be saved in the same directory or folder as the audio file for them, and ID3 tags must be added to the audio files before loading them to the player in order for them to display.

## Video Mode

- Note- this player supports video files in AVI, RM, RMVB, WMV (non encrypted), 3GP, and FLV formats. If your video files are not in one of these formats, the files will not play.

When you tap the video icon on the Main Menu, you will enter the Video Selection screen as Displayed below.



Tap the video file you wish to play, and the file will start automatically. When you tap the screen, the video controls will display.



Once you have entered the video playback mode, your file will begin playing automatically. Tap the PLAY icon to pause the file, and tap it again to resume playback. Tapping the Next or Previous Icons will skip to the next or previous tracks. Tap and hold the Next or Previous Icons to fast forward or rewind the current track.

## **Volume Adjustment**

To Adjust the volume on the player, simply press the V+ or V- buttons to increase or decrease the volume. Alternatively, you can tap the speaker icon on the screen, and slide the volume adjustment bar to the desired level.


## **Camera Mode**

Camera mode both allows you to take still pictures, and record video. To enter Camera Mode, tap the Camera icon on the main menu. You will automatically enter camera mode, ready to take photos. We recommend taking photos and recording videos with the player tilted on its side, so that the “top” of the player is on the right, and the “bottom” of the player is on the left hand side. When arranged in this manner the camera button will be arranged at the new top of the device on the right hand side, just as on a standard camera. Press and hold the Menu button on the player to return to the main menu, or briefly press the Menu button to bring up the camera options where you can adjust the resolution of images, add a filter, adjust brightness and zoom.

## **Still Images**

To take a still image, simply briefly press the camera button on the player. The camera will snap a picture and save it. Saved images are stored in the CAMERA folder on the player.

## **Recording Video**

To record video, enter camera mode, then tap the  icon and the player will enter

video recording mode. Briefly press the camera button to begin recording, and press it again to stop and save the recording.

## **EBook Mode**

Ebook mode allows you to view your text files loaded on the player. To enter eBook mode, tap the eBook icon on the main menu, and you will enter the ebook selection screen. Select the file you wish to view. When in the eBook mode, tap the up or down arrows to advance by page, or use the V+ or V- buttons to adjust the page line by line.

## **Ebook Submenu**

When viewing an eBook file, tap the eBook submenu icon to enter the eBook submenu

- Page Jump- allows you to skip to a specific page in the current eBook file
- Save Mark- allows you to save the current spot in your eBook file to return to at a later time
- Load Mark- Load one of your bookmarks and return to the point the mark was saved at
- Del Mark- allows you to delete one of your current bookmarks
- Set Font- allows you to adjust your font size
- Set Color- allows you to set the text to one of three colors
- Browser Mode- allows you to set up an auto browser mode which will automatically turn the pages for you.



- Flip Time- set the length of time a page is displayed before changing when the auto browser is set

## Photo Mode

- Note- this player supports image files in JPG, GIF, and BMP formats. If your image files are not in one of these formats, the files will not display.

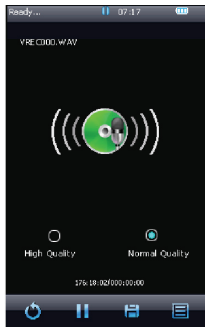
To enter Photo Mode tap the Photo Icon on the main menu. Select the file you wish to wish to display.



You can tap the rotate left and right buttons (   ) to rate the image, zoom in and out, or simply tap the next or previous buttons to skip to the next or previous images. Tapping the slideshow icon will allow you to set up a slideshow to automatically display your images.

### Voice Recorder

To enter the voice recording mode, tap the Recorder icon on the main menu. This mode will allow you to record voice notes.



Tap the play/pause icon to begin or pause the current recording, and press the save icon to save the file. Tapping the Voice Recording Submenu icon will allow you to



adjust the recording quality and volume.

## **Explorer**

Explorer mode allows you to select a file to play, of any type. The file will automatically open in the appropriate mode (videos in video mode, audio files in Music mode, etc)

## **Settings**

The settings mode allows you to adjust a large number of your system settings. To enter this mode, tap the settings icon on the main menu.

### **Display Settings**

- Backlight Time- Adjust the length of time that the backlight stays lit when not viewing a movie and no buttons are pressed.
- Brightness- Adjust the screen brightness
- Light Mode- Allows you to select whether the screen powers completely off or dims when the backlight time is reached
- Display Status- Select whether to display the status bar on the top of the screen.

### **System Settings**

- Restore Defaults- returns the player to the factory settings

## **Desk Top**

Use this item to select one of 5 desktop backgrounds to use.

## **Language**

Select from one of 19 supported languages

## **System Information**

Displays some system information including the firmware version, Hardware ID number, flash memory, and SD memory.

## **Automatic Shutdown**

Allows you to set a timer to power the device off

## **Calibrate screen**

If your touch screen is not responding well, use this mode to recalibrate the screen. **NOTE- if the touch screen is miscalibrated, the player's touch screen controls will not function**

## **Set the Time**

Allows you to set the time and date.

## **Other Functions**

### **Calculator**

This functions as a standard calculator. Tap the numbers and symbols to perform calculations

### **Calendar**

Displays a standard Calendar.

If at any point, you have questions about your player or experience an issue with your player, please feel free to contact our technicians at [mssupport@machspeed.com](mailto:mssupport@machspeed.com) or by phone at 580 272 0035.

# 35 free songs

## +1 free audiobook

- Choose from over 5 million songs and over 5,000 audiobooks
- DRM-free tracks play on your PC, Mach Speed media player, and any MP3 player
- Free 14-day trial—Cancel anytime, keep your downloads

*To redeem your free mp3s, go to:*

 | [emusic.com/machspeed](http://emusic.com/machspeed)



Get up to 35 music downloads and 1 audiobook free with 14-day eMusic trial subscriptions. Offers available to first-time eMusic customers only. Separate subscriptions required. Audiobook offer valid for one audiobook credit; some titles require multiple credits for download. Internet access, registration, and credit or debit card required. Limited time offer. Offers and eMusic's prices are subject to change without notice and are subject to eMusic's terms of use. eMusic and the eMusic logo are either registered trademarks or trademarks of eMusic.com Inc in the USA and other countries. All rights reserved. eMusic is not responsible for products, services, or claims made by Mach Speed.

## Free Manuals Download Website

<http://myh66.com>

<http://usermanuals.us>

<http://www.somanuals.com>

<http://www.4manuals.cc>

<http://www.manual-lib.com>

<http://www.404manual.com>

<http://www.luxmanual.com>

<http://aubethermostatmanual.com>

Golf course search by state

<http://golfingnear.com>

Email search by domain

<http://emailbydomain.com>

Auto manuals search

<http://auto.somanuals.com>

TV manuals search

<http://tv.somanuals.com>