

USER MANUAL

For

TRIO-V818

Congratulations on purchasing your Trio digital media player! To get the most out of your purchase, please take the time to carefully read through this manual

If you have any remaining questions, comments, or concerns please feel free to contact Mach Speed technical support at 580-272-0035. Thank you for your support and cooperation!

We bear no responsibility for any damage or loss of personal data due to misuse of software and/or hardware, damage to the player caused by human factors, replacement of battery or other unforeseen circumstances. To prevent data loss, please backup your data regularly.

Information in the manual is subject to change without notice.

Information in the User's Manual is subject to copyright protection. Without prior written permission, photocopying or copying is prohibited.



Due to Firmware updates and product improvements, some of the pictures or functions described in this manual may not be the same as those included with your player.

Information

- Do not violate or infringe the copyright law and other international copyright laws while using this player for recording.
- The copyright law forbids unauthorized reproduction of copyrighted music for any other purpose other than self-entertainment without the author's permission.
- For the purpose of self-entertainment, it is strictly prohibited to compile and disseminate copyrighted music to a third party without the author's permission.
- If copyrighted music is intentionally disseminated by means of information network without the author's permission, the infringer will violate "the right of communications to the public" and "the right of distribution" and shall be subject to the criminal charges.
- The Company, and the manufacturers, distributors and dealers of this player are not liable for any of the above infringement acts.
- The Company shall not be liable for any loss or damage (whether anticipated or unanticipated losses) of customers or other third parties due to the usage of the player.
- Before introducing or using the player, please back-up all

essential information stored in PCs. The Company shall not be liable for any loss or damage due to the usage of the player.

Precautions

- Avoid using your Trio under extremely hot, cold, dusty or wet environments.
- Striking, dropping, or severe jolts to your Trio may cause physical damage, battery loosening, or other hardware damage.
- The following conditions indicates a low battery level and signifies that the player should be charged:
 - The battery icon displays  in normal operation with low battery prompt.
 - Where there is no response when pressing keys and the battery icon displays .
 - The player turns off automatically.
- Static electricity may cause damage to interior hardware of the player.
- Do not disassemble the unit in any way as this will void all warranties. Please contact your place of purchase if you experience any problems with your unit.
- Keep this player out of reach of children. Take note that this player is not edible and should not be placed in your mouth.
- Do not modify, repair or dismantle the player. Doing so may result in fires, electric shocks, complete breakdown of the player, etc. All of which, are not covered under warranty.
- Do not use any diluents or volatile liquid to clean the player. Keep in mind that the surface of the player should only be wiped with a dry cloth.



Disposal

Do not dispose of a defective MP3 player in normal household waste disposal containers (internal



battery). Take the defective device to your retailer or to an appropriate waste collection site. This will ensure that the device is disposed of in an environmentally-friendly way.

Notes:

Automatic Power Off

To save power, the player will turn off automatically when idle for a while

Longer Periods of Non-Use

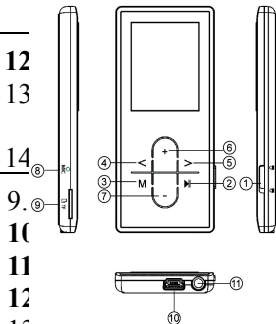
Please charge the player occasionally to avoid the rechargeable battery exhausted and can't switch on the player.

Charging the Battery

To charge the battery, please ensure that you have the power switch set to the ON position. Connect the player to your computer's USB port, or to the charger supplied with the player.

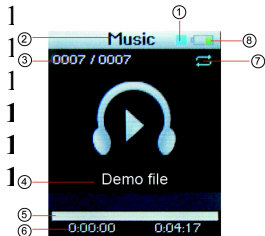
Front and Side View

1. Location of Control



1. **Hold button**
2. **Play/Pause/Enter/press and hold for power on/power off**
3. **Menu / access setup menu and confirmation**
4. **Previous track/Fast forward**
5. **Next track/ Rewind**
6. **Vol+**
7. **Vol-**
8. **MIC**
9. **SD card slot**

14. **Repeat mode**
15. **Play mode**



1. **Play mode**
2. **Play**
3. **Song name**
4. **Song information**
5. **Progress bar**
6. **Playing time**
7. **Repeat mode**
8. **Battery indicator**

Music Mode

1. Select Music Mode and press ► to enter the **Music interface**. Press **M** to enter music library to select the song you wish to play and press ►.
2. While a song is playing, you can pause, then press **M** to enter the Music Library again, or use **</>** to switch songs.
3. Press ► to start playing.
4. Press and hold **</>** for FF/REW, press **+** or **-** to adjust the volume.
5. When the song is playing, press and hold **M** to return to the main menu.

Movie Mode

1. Select Movie Mode and press ► to enter the Movie Library. Press **</>** to select the video you wish to play and press ►.
2. While a video is playing you can press **M** to enter the Movie Library again, or use **</>** to switch videos.
3. Press ► to start playing.
4. Press and hold **</>** for FF/REW, press **+** or **-** to adjust the volume.
5. When the video is playing, press and hold **M** to return to the main menu.

Photo Mode

1. Select Photo Mode and press ► to enter the Media Library.
2. Press **</>** to select the photo, Press ► to browse your pictures and press **</>** for next or previous photo.

FM Radio Mode

1. Select FM Radio Mode and press ► to enter the FM Radio interface.
2. Press **M** to change the mode in the upper right hand corner and press ► to access that mode
 - **Save station-** Save the current station as a preset
 - **Delete station-** Delete the current station as a preset.
 - **Sensitivity-** select High/Middle/Low/Exit
 - **FM Band-**select Europe/Japan/USA Band/Exit.

- Auto Scan-press ►► to enter the auto scan, when the scan is finished, press ►► after, press </> to adjust the station manually by 0.1MHz, and save any channels with a strong signal as a preset.
- FM Record- Record the current station
- Exit- press ►► to exit FM Radio Mode.

Record Mode

1. Select Record and press ►► to start recording.
2. Press ►► to pause, press M to save and exit.

Voice Playback Mode

1. Select Voice Mode and press ►► to enter the **Voice interface**.
2. Press ►► to start playing.
3. While a file is playing you can press M to enter the A-B mode.
4. Press and hold </> for FF/REW, press + or - to adjust the volume.
5. Press and hold M to return to the main menu, **the playback is paused**.

E-Book Mode

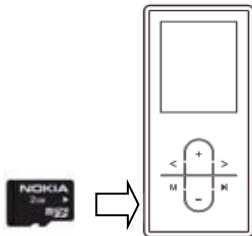
1. Select **E-Book** Mode and press ►► to enter the **E-Book Library**. Press </> to select the file you wish to view and press ►►.
2. Press </> to thumb to the next or previous page.

Settings

EQ	Set your equalizer
Play mode	Set your repeat mode
Language	Selecting the display language
Stop off	Set the power off timer
Backlight off	Set the screen saver
About	Memory space
Reset	Reset
Exit	Exit

Using of a SD card

1. Power the player off and insert the card
2. To insert the SD card, look at the front of the player and hold the SD card with contacts facing upwards, as shown in the diagram.



3. Push the card into the card slot and push the edge of the card in with your fingernail until the card clicks audibly into place.
4. Removing the card
5. Power off the player and briefly press the card into the card slot once in order to release it (release is audible). Now remove or exchange the card.

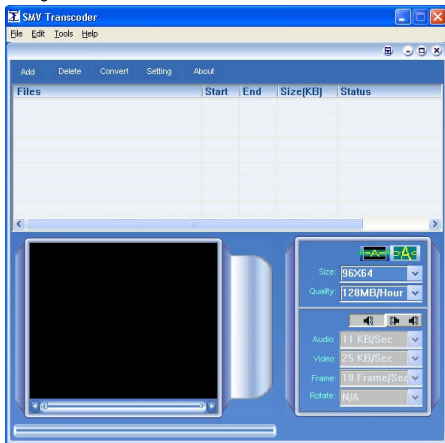
Video converter

- 1) Install the Video conversion tool "SMV Transcoder" and the Codec from the provided CD
- 2) Install the SMV_Transcoder first.
- 3) You can install the Video Codec required to convert most common files by starting the "KLMcodec462" tool. Please confirm with OK to uninstall the old and to install the new Codec versions. Please don't change any settings during the installation.
- 4) Open your SMV video conversion tool. The icon should be on your desktop after installation.

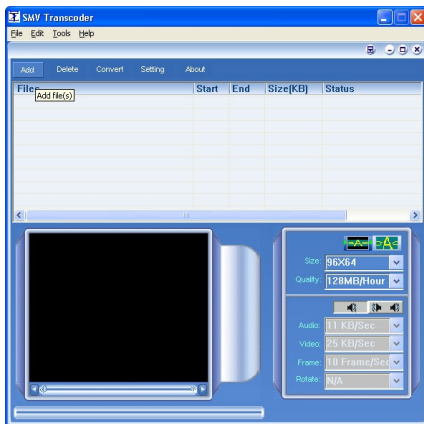


video2smv.exe

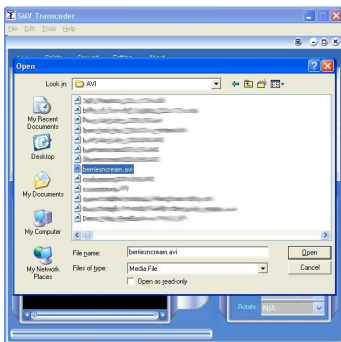
Once you have opened the SMV conversion tool, you will see the following window.



Our first step is to select a file to convert. To do this, you will click the “Add” button, as shown below.



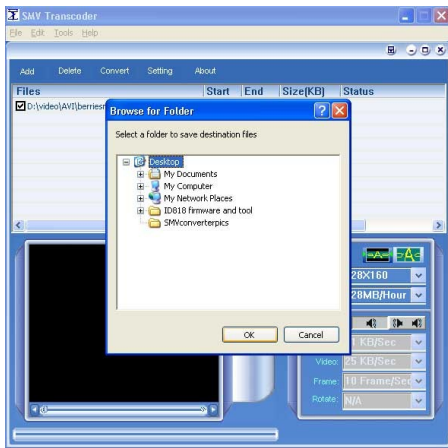
A window will open, which will allow you to select your file. Highlight the file you want to convert, and click the “Open” button.



After you have chosen the file you wish to convert, and see it displayed on the main screen, you will select the location to save the file to, once it is converted, and click the “OK” button.

NOTE-with the current version of this software it is **REQUIRED** to select a save location or the file will not convert properly.

We recommend selecting a save location which is very easy for you to get to, such as the desktop, or the “my movies” folder.



Once you have selected your save directory, look to the middle-right of the screen. There you will find some conversion settings. We recommend selecting full picture, 128x160 (or 160x128), and 128MB/Hour for the optimum quality by megabyte space usage.



Now that we have everything set, the last thing we will need to do is click the "Convert" button and allow the video to convert to .SMV format. Once this process has completed, you will have the converted movie saved in the location you specified in step 5.

i Please always set the Video Size to 128 X 160 for TRIO-V818, otherwise the Videos will not play back properly

COMPUTER COMMUNICATION

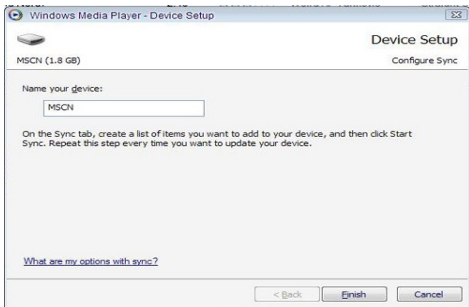
Using Windows Media Player

(Note: you must use Windows Media Player 10 or later to use this feature.)

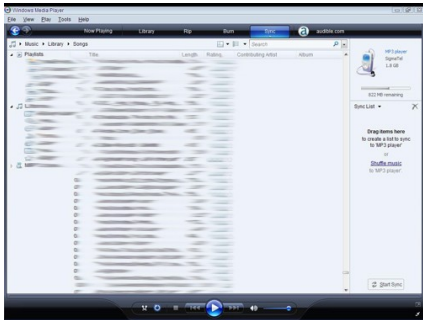
(Note: this player does not support DRM encrypted audio files, such as those downloaded from the Windows Media Player download

service.)

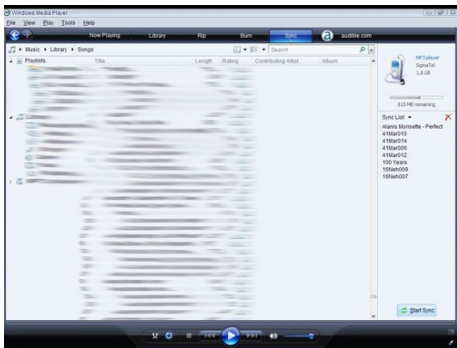
1. Open Windows Media Player and connect the MP3 player to a working USB port. Windows Media player will prompt you with a setup screen asking you to name the MP3 player.



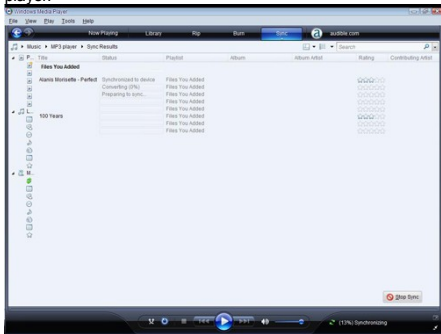
2. Once you have named your MP3 player, select Finish, and your Windows Media Player will open to the Sync tab.



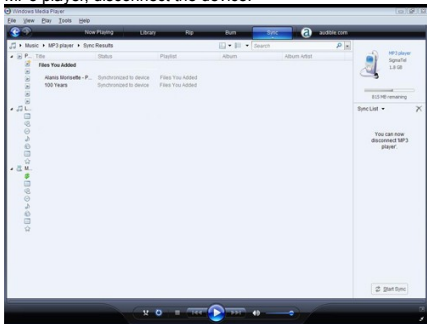
3. Drag your music to the sync list (on the right of the screen) from the list on the left. Once you have selected the music you wish to add to the player, press Sync.



4. Windows Media player will load the songs on to your MP3 player.



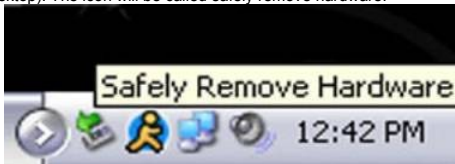
5.....Once all the songs you have added are synced to the unit, and Windows Media Player says that is safe to disconnect your MP3 player, disconnect the device.



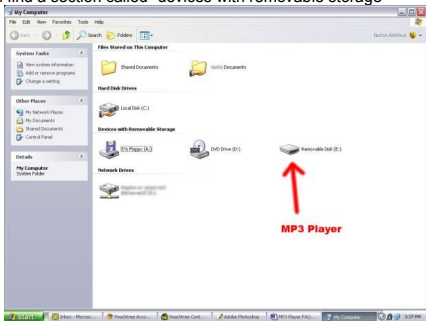
COPY AND PASTE

1. Connect the MP3 player to a working USB port.

When the unit is connected to your computer, it will create a gray and green icon in the system tray (lower right hand corner of your desktop). The icon will be called safely remove hardware.



2. Go to the "My Computer" section of your computer. In there you will find a section called "devices with removable storage"



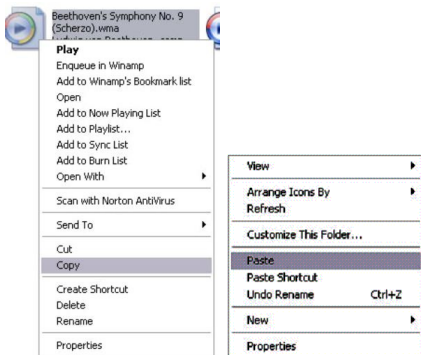
3. Locate the drive created by the unit, generally just called Removable Disk, with a letter in Parenthesis. Drive letters vary depending on your system configuration.
4. Open the drive by either double left clicking on the drive itself, or by right clicking to open the option menu then left click on the desired drive.



5. Locate the music stored on your computer. Generally this is stored in the "My Music" folder of your computer. NOTE: if you are unable to locate the music on your computer, click on start, search, files and folders, then search for "*.MP3, *.WMA".



6. Once you have located the song files, you can right click on the song itself, and select "copy". Open the removable disk drive, right click on in the empty space, and select Paste. This will transfer the song on to your MP3 player.



7. Repeat step 7 for as many songs as you want to copy on to the unit.

NOTE: MAC Computers

When connected to your MAC computer, the device will act as a removable drive. Simply drag your MP3 files to the device.

Product specifications

- Model No.: TRIO-V818
- 1.8" SDT LCD, 262K color screen
- 128 x 160 pixel resolution
- USB 2.0 full speed compliant
- MP3 / WMA / WAV digital music playback
- Audio output power: 10mW + 10mW, 32 Ω
- Audio output connections: 3.5mm stereo sockets
- Built-in FM radio And FM content Recording
- FM frequency range: 87.5MHz – 108.0MHz

- FM preset channels: 20 channels
- FM Signal-to-noise ratio: 60dB
- Image viewer formats: JPEG, BMP
- Video viewer formats: SMV
- MP3 bit: 32Kbps – 320Kbps
- WMA bit: 32Kbps – 192Kbps
- Audio recording formats: WAV (32Kbps),
- Frequency response: 20Hz to 20KHz
- Signal-to-Noise ratio: > 80dB
- THD: <0.05%
- Battery: Lithium battery
- Dimension: 90 x 41 x 8mm
- Weight: 45.8grams

Free Manuals Download Website

<http://myh66.com>

<http://usermanuals.us>

<http://www.somanuals.com>

<http://www.4manuals.cc>

<http://www.manual-lib.com>

<http://www.404manual.com>

<http://www.luxmanual.com>

<http://aubethermostatmanual.com>

Golf course search by state

<http://golfingnear.com>

Email search by domain

<http://emailbydomain.com>

Auto manuals search

<http://auto.somanuals.com>

TV manuals search

<http://tv.somanuals.com>