

Makita®

18V LXT LITHIUM-ION CORDLESS 18 GAUGE STRAIGHT SHEAR KIT

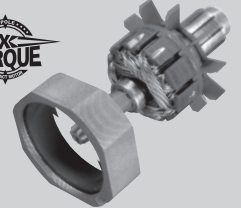
TOUGH DOUBLE-CUT SHEAR DESIGN HANDLES UP TO 18 GAUGE MILD STEEL AND 20 GAUGE STAINLESS STEEL FOR STRAIGHT OR SCRIBE CUTS WITHOUT DEFORMING THE MATERIAL

Compact Length And Lightweight Design Enhances Cutting Control

Makita-Built 4-Pole Motor Delivers Power And Speed (2,800 SPM) - Almost 20% Faster Than Conventional Cordless Shears

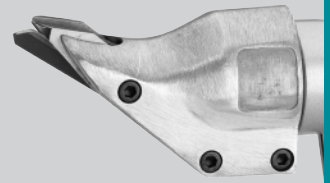
Swivel Shear Head Rotates 360° For Increased Cutting Options And Added Convenience

POWER



Makita-built 4-pole motor delivers power and speed (2,800 SPM)

CONTROL



Double-cut head makes fast, undistorted scribe or straight cuts

PERFORMANCE



LXT Li-Ion batteries charge in 30 minutes, run longer and deliver 2.5X more cycles

CONVENIENCE



Deep reversible belt-clip attaches to either side for secure attachment to tool belts

Models
BJS130
BJS130Z

LXT
LITHIUM-ION

SHEAR LXT

18V LXT LI-ION CORDLESS 18 GA. STRAIGHT SHEAR KIT

Models BJS130/BJS130Z

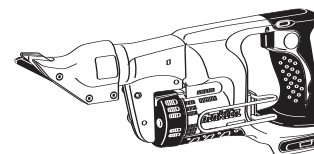
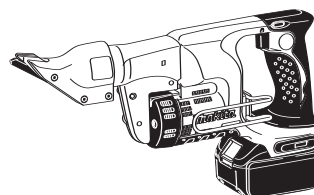
FEATURES & BENEFITS

- Makita-built 4-pole motor delivers power and speed (2,800 strokes per minute) - almost 20% faster than the conventional cordless shears
- Tough double-cut shear design handles up to 18 gauge mild steel and 20 gauge stainless steel for straight or scribe cuts without deforming the material
- Swivel shear head rotates 360° for increased cutting options and added convenience (wrench for head adjustment stows away under the handle for added convenience)
- Compact design at only 13-3/4" long and weighs only 5.0 lbs. for reduced operator fatigue and increased cutting control
- Reversible belt-clip attaches to either side of the tool for secure attachment
- Soft grip handle provides increased comfort on the job
- Ergonomic shape fits like a glove with even pressure and easy control
- Makita Lithium-Ion provides longer run time, 5x lower self-discharge (for use any time) and 16 firm holding contact terminals (for constant high power)
- 30-minute rapid optimum charger communicates with the battery's built-in chip throughout the charging process to optimize battery life by actively controlling current, voltage and temperature
- 30-minute rapid optimum charger has a built-in fan to cool the battery to produce more lifetime work
- 3-year warranty on tool and 1-year warranty on battery and charger



STANDARD EQUIPMENT

- 2 ea. 18V LXT Lithium-Ion 3.0Ah Battery (BL1830)
- 30-minute rapid optimum charger (DC18RA)
- Plastic battery cover (450128-8)
- Belt hook (281220-7)
- Adjustment wrench (783202-0)
- Contractor bag (821007-X)



SPECIFICATIONS

Capacities:	Mild Steel: 18 gauge Stainless Steel: 20 gauge
Strokes per minute	2,800
Watt hours	54.0
Battery	18VDC (3.0Ah)
Overall length	13-3/4"
Net weight	5.0 lbs. (w/battery)
Shipping weight:	(BJS130) 14.8 lbs. (BJS130Z) 4.6 lbs.
Master carton qty.	3
UPC Code:	(BJS130) 088381-094566 (BJS130Z) 088381-094580

Model BJS130



Model BJS130Z



OPTIONAL ACCESSORIES

- 16 Gauge Head (125513-1)
- Optimum Automotive Charger (DC18SE)



Makita offers a wide variety of METAL SHEAR accessories. For a complete listing, please refer to the Makita General Catalog, or visit our website at makitatools.com, or call 1-800-4MAKITA.

All specifications subject to change without prior notice. All models and accessories subject to stock on hand.
NTF-0808-400 MA-0753-08 For more information, call 1-800-4MAKITA or visit makitatools.com

Download from www.Somanuals.com. All Manuals Search And Download.



Makita U.S.A., 14930 Northam St., La Mirada, CA 90638

Free Manuals Download Website

<http://myh66.com>

<http://usermanuals.us>

<http://www.somanuals.com>

<http://www.4manuals.cc>

<http://www.manual-lib.com>

<http://www.404manual.com>

<http://www.luxmanual.com>

<http://aubethermostatmanual.com>

Golf course search by state

<http://golfingnear.com>

Email search by domain

<http://emailbydomain.com>

Auto manuals search

<http://auto.somanuals.com>

TV manuals search

<http://tv.somanuals.com>