



7601193 (F-STYLE OR NON-MANITOWOC BIN) 7601223 (S-STYLE MANITOWOC BIN) Q-DUAL WATER TROUGH/CURTAIN REPLACEMENT Installation Instructions

Kit Contents:

- Water Trough
- .625 Hole Plug, White
- 10-32 x 3/4 Phil Fat Type F Screw (2)
- 10-24 x 1/2 Trim HWH TY23 (2)
- Trough Protector (2)
- Water Curtain (2)
- Ice Deflector Weldment
- Water Fitting Bracket
- Control Board
- Installation Instructions
- Bushing

Remove:

1. Splash shield (reuse)
2. Water inlet fitting and bracket (reuse fitting - discard bracket)
3. Water pump (reuse)
4. Water curtains (discard)
5. Trough protectors (discard)
6. Water level probe (reuse)
7. Water trough (discard)
8. Ice deflector (discard)
9. Control board (discard)

Before you install:

1. Remove four screws from the water pump mounting bracket. Remove three screws connecting the water pump housing to the pump motor. Rotate the pump housing clockwise (from the shaft end) one position and then reinstall the screws and mounting bracket (see Figure 3).
2. Remove the water inlet fitting from the water inlet bracket. Save two of the three plastic wing nuts and water inlet fitting. These will be reused. Discard the bracket.

Install in the following order:

1. New ice deflector
2. New water trough
3. Water pump and reroute water pump supply hose and dump to right side of pump (see Figures 1 and 3)
4. Plug for water level probe and old mounting screw to cover holes - **Note! Do not install probe at this time**
5. New water curtains
6. New water inlet/water level probe mounting bracket, using screws provided (see Figure 2)
7. Water inlet fitting and water level probe using existing plastic wing nuts - route water inlet probe through grommet in bulkhead with ice thickness probe wire
8. 1-1/2" bushing in water inlet bracket
9. Water inlet hose through bushing on back of bracket to water inlet fitting
10. New control board
11. Trough protectors

Manitowoc Ice, Inc.

2110 South 26 Street, P.O. Box 1720, Manitowoc, WI 54221-1720 USA

Telephone 920-682-0161, Fax - Sales: 920-683-7589, Service/Parts: 920-683-7585, Other: 920-683-7879

Web Site - www.manitowocice.com

8006823

Sheet 1 of 3

03/25/02

Q-DUAL INSTALL DATA

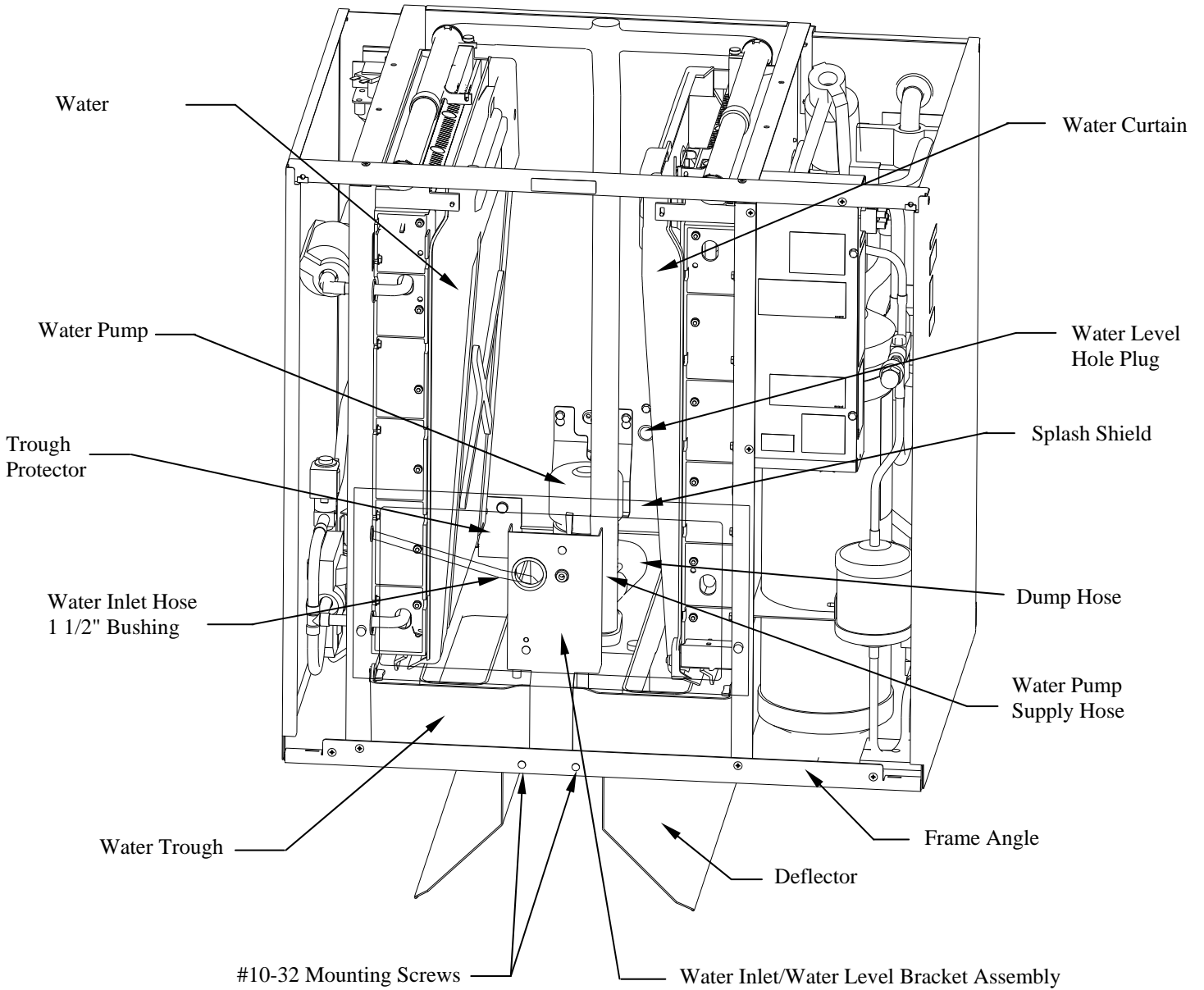


Figure 1

WATER INLET BRACKET

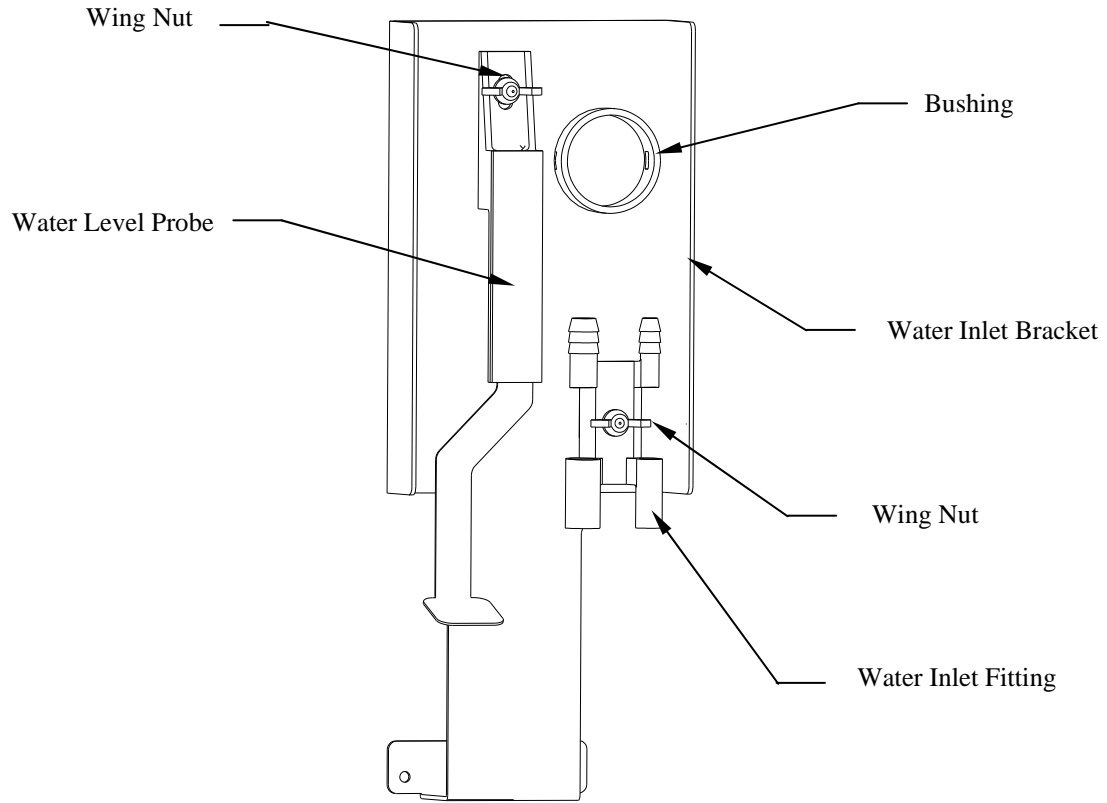


Figure 2

WATER PUMP SUPPLY POSITION AFTER ROTATING PUMP HOUSING

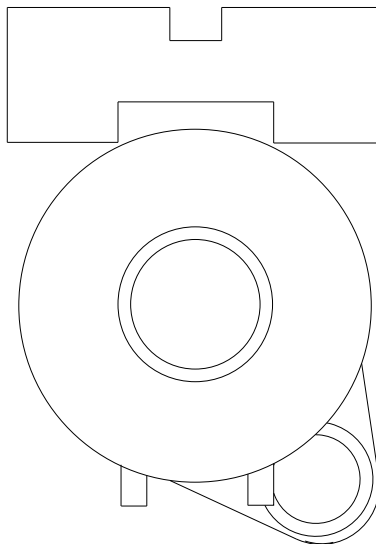


Figure 3 (Top View)

Free Manuals Download Website

<http://myh66.com>

<http://usermanuals.us>

<http://www.somanuals.com>

<http://www.4manuals.cc>

<http://www.manual-lib.com>

<http://www.404manual.com>

<http://www.luxmanual.com>

<http://aubethermostatmanual.com>

Golf course search by state

<http://golfingnear.com>

Email search by domain

<http://emailbydomain.com>

Auto manuals search

<http://auto.somanuals.com>

TV manuals search

<http://tv.somanuals.com>