



# MIXED DRINK MAKER™



**MD 3000 Series** Instruction Manual

# IMPORTANT SAFEGUARDS

WHEN USING ELECTRICAL APPLIANCES, BASIC SAFETY PRECAUTIONS SHOULD ALWAYS BE FOLLOWED, INCLUDING THE FOLLOWING:

1. **READ ALL INSTRUCTIONS BEFORE USING.**
2. To protect against electric shock, do not immerse appliance, cord or plug in water or other liquids.
3. Close supervision is necessary when any appliance is used near children. This appliance should not be used by children.
4. Unplug from outlet when not in use, before putting on or taking off parts, and before cleaning.
5. Avoid contacting moving parts.
6. Do not operate any appliance with damaged cord or plug or after the appliance malfunctions, or is dropped or damaged in any manner. Contact 1-877-689-2737 for customer service.
7. Do not use outdoors.
8. Do not let cord hang over the edge of a table or counter, or touch hot surfaces, including the stove.
9. The use of attachments not recommended or sold by the manufacturer may cause fire, electric shock or injury.
10. Do not leave appliance unattended while it is operating.
11. To disconnect, turn control to off, then remove plug from wall outlet.
12. Do not use appliance for other than intended use.

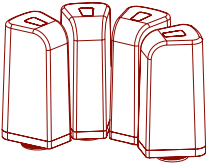
## SAVE THESE INSTRUCTIONS FOR HOUSEHOLD USE ONLY

### **Polarized Plug**

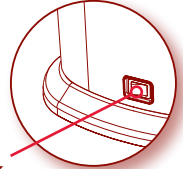
This appliance has a polarized plug (one blade is wider than the other). As a safety feature, this plug will fit in a polarized outlet only one way. If the plug does not fit fully into the outlet, reverse the plug. If it still does not fit, contact a qualified electrician. Do not attempt to defeat this safety feature.

# 7 QUICK STEPS TO GET YOUR PARTY STARTED

## 1. Install your pre-chilled tanks.



- White tank base: Liquor (Vodka, Tequila or Rum)
- Red tank base: Cranberry Juice
- Green tank base: Sour Mix
- Orange tank base: Orange Juice (no pulp)



## 2. Turn your appliance on. Switch is located in back.

## 3. Follow the LCD screen shots that appear:



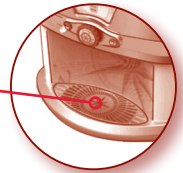
○ Rotate center wheel to select the liquor, then confirm by pressing the center button.



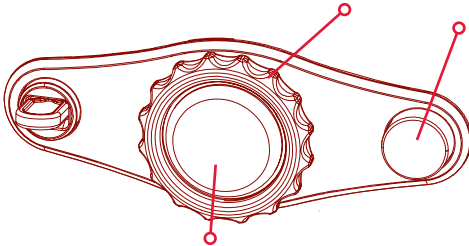
○ Confirm mixer tanks are in place by pressing the center button.

## 4. Place your 16 oz. cup on the Party Pad.

Fill cup about half way with ice to accommodate 8 ounces of liquid.



## 5. Turn the Drink Wheel to find your desired mixed drink.



○ Not sure what to drink? Press the "I Feel Lucky" Button and a mixed drink will be randomly selected for you!

## 6. When ready, press the Make My Drink Button to pour your drink.

## 7. Enjoy your mixed drink!



# WELCOME

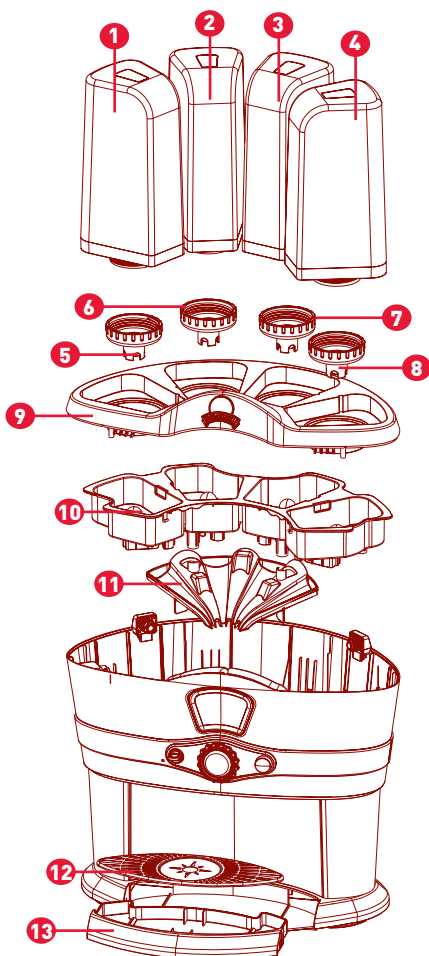
*Congratulations on your purchase of the Margaritaville®  
Mixed Drink Maker™ – MD3000!*

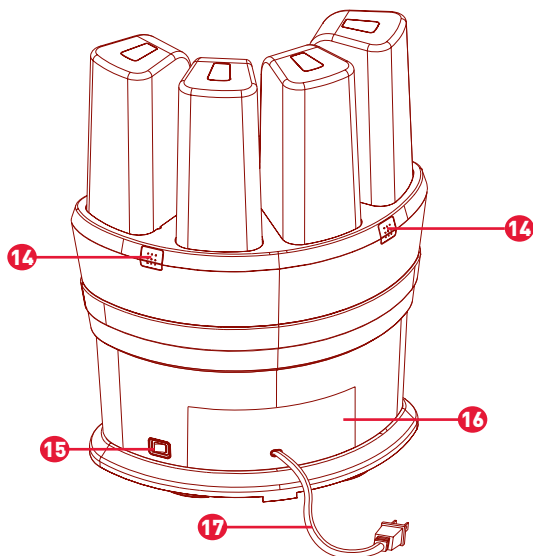
To learn more about Margaritaville® products,  
please visit us at [www.margaritavillecarg.com](http://www.margaritavillecarg.com).

## MIXED DRINK MAKER™

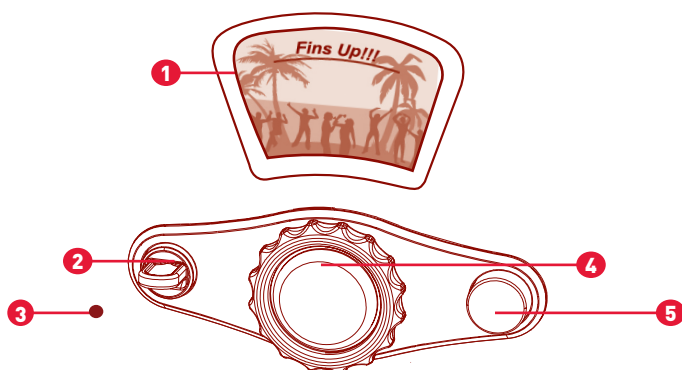
### PARTS LIST

- 1 Liquor Tank
- 2 Cranberry Juice Tank
- 3 Sour Mix Tank
- 4 Orange Juice Tank
- 5 Liquor Tank Cap (White)
- 6 Cranberry Juice Tank Cap (Red)
- 7 Sour Mix Tank Cap (Green)
- 8 Orange Juice Tank Cap (Orange)
- 9 Basin Cover
- 10 Basin
- 11 Drink Chute
- 12 Cup Station
- 13 Drip Tray
- 14 Release Buttons for Basin Cover (2x)
- 15 Power On/Off Switch
- 16 Power Cord Storage
- 17 Power Cord





## Control Panel



- 1 LCD Display Screen** - The digital screen displays a variety of images describing all the details of the drink possibilities.
- 2 Drink Strength Selector** - The "Strong Pour" selection adds 3 ounces of liquor and less juice mix; the "Standard Pour" (default position) selection adds 2 ounces of liquor and more juice mix.
- 3 Drink Strength Indication Light**
- 4 Drink Selection Wheel** - Turn the wheel to view all the drink selections.
- 5 Center Button** - Press the button in the center of the Drink Selection Wheel and the machine will automatically make your drink. Be sure to have a glass on the Party Pad.
- 6 "I Feel Lucky" Button** - Press the button, and the display will spin like a roulette wheel. But you can't lose in this game. When the wheel stops, the machine will have randomly selected a drink to try. **Want something else? Lucky you—you can spin again and again.**

# SETTING UP THE MIXED DRINK MAKER™

**TIP: BEFORE STARTING, IT'S BEST TO CHILL THE LIQUOR AND JUICE TANKS IN THE REFRIGERATOR.**

1. Place the Mixed Drink Maker on a clean, dry, flat surface.
2. Load the liquor and juice tanks (each tank will sit flat on surface. Recommended to use chilled juice).
  - a. Fill the white cap liquor tank with rum, vodka or tequila.
  - b. Fill the red cap juice tank with cranberry juice only.
  - c. Fill the green cap juice tank with sour mix only.
  - d. Fill the orange cap juice tank with orange juice only (no pulp).
  - e. Load all of the tanks in their color-coded designated areas. (Each tank only fits one way, lining up with the unique grooves on the appropriate tank.)
  - f. Never put anything but the chosen liquor and juices into the corresponding tanks.



3. Turn on the power. (The switch is located at the rear side of the machine.) The welcome screen will appear within 7 seconds.



4. Select your liquor by turning the Drink Wheel. The chosen liquor will be in the center position.
5. Next, confirm that your juices are in place by pressing the center button.
6. Press the center button to confirm.
7. That's it. You're good to go—bring on the guests.

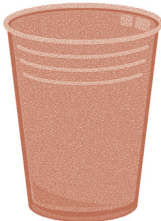


# SERVING MIXED DRINKS

Once you've set up the Mixed Drink Maker, you're ready to start serving. All mixed drinks are in alphabetical order per Liquor selection. Each Liquor Selection will make 16 different mixed drink combinations, as well as, a shot of liquor.

1. Fill a 16 ounce glass with ice (about half way), so it can accommodate 8 ounces of liquid.
2. Place the glass in the Cup Station.
3. Choose a drink by turning the Drink Selection Wheel. (The graphics will change with each turn.)
4. If you want a stronger drink (3 ounces of liquor versus a standard 2 ounces), press down on the "Strong Pour" toggle. It's spring-loaded and will only make one Strong Pour drink when pressed. Then, it returns to the standard default position.
5. Press the Center Button to pour your selected mixed drink.
6. Not sure what to drink? Be adventurous and push the "I Feel Lucky" button. Watch the display spin as the Mixed Drink Maker sizes you up and suggests the right drink for you. If you don't like the suggestion press the button again for another try. But try it- you might get lucky. Oh, behave— not lucky that way.
7. Need a quick 1 oz. shot? Turn the wheel to find that shot option. Need a double? Press the Strong Pour for 2 oz. of liquor. Press the center button to dispense.

**TIP: DIFFERENT 16 OUNCE GLASSES CAN BE USED IN THE MIXED DRINK MAKER. WE RECOMMEND THE FOLLOWING:**



**PLASTIC CUP**



**TUMBLER**



**GLASS CUP**

# RECIPES

## Vodka Drinks

Standard Drink				
	Liquor	Mixer		
Drink	Vodka	Cranberry	Sour	Orange
Cape Cod	2.0 oz	6.0 oz		
Cran Codder	2.0 oz	5.0 oz	1.0 oz	
Cranberry Toad	2.0 oz	5.0 oz		1.0 oz
Key West Screwdriver	2.0 oz		1.0 oz	5.0 oz
Madras	2.0 oz	3.0 oz		3.0 oz
Party Punch	2.0 oz	2.0 oz	2.0 oz	2.0 oz
Pink Lemonade	2.0 oz	1.0 oz	5.0 oz	
Ruby Punch	2.0 oz	4.0 oz	1.0 oz	1.0 oz
Russian Rita	2.0 oz		5.0 oz	1.0 oz
Screwdriver	2.0 oz			6.0 oz
Sour Berry	2.0 oz	3.0 oz	3.0 oz	
Sucker Punch	2.0 oz	1.0 oz	4.0 oz	1.0 oz
Sunset Punch	2.0 oz	1.0 oz	1.0 oz	4.0 oz
Sweet-tart	2.0 oz		3 oz	3.0 oz
Vodka Shot	1.0 oz			
Vodka Sunburst	2.0 oz	1.0 oz		5.0 oz

**Note: Strong shot consists of 2 oz. of liquor.**



# RECIPES

## *Tequila Drinks*

Standard Drink				
	Liquor	Mixer		
Drink	Tequila	Sour	Orange	Cranberry
Boat Punch	2.0 oz	2.0 oz	2.0 oz	2.0 oz
Cactus Punch	2.0 oz	1.0 oz	1.0 oz	4.0 oz
Cran Rita	2.0 oz	5.0 oz		1.0 oz
Cran-Aid	2.0 oz		1.0 oz	5.0 oz
Knockout Punch	2.0 oz	4.0 oz	1.0 oz	1.0 oz
Margarita	2.0 oz	5.0 oz	1.0 oz	
Orange Worm	2.0 oz	1.0 oz	5.0 oz	
Prickly Madras	2.0 oz		3.0 oz	3.0 oz
South of Boarder Screwdriver	2.0 oz		6.0 oz	
Southern Breeze	2.0 oz	1.0 oz	4.0 oz	1.0 oz
Spicy Cran	2.0 oz	3.0 oz		3.0 oz
Tequila	1.0 oz			
Tequila Bite	2.0 oz			6.0 oz
Tequila Sour	2.0 oz	6.0 oz		
Tequila Sunburst	2.0 oz		5.0 oz	1.0 oz
Tropical Rita	2.0 oz	3.0 oz	3.0 oz	
Wild Thing	2.0 oz	1.0 oz		5.0 oz

**Note: Strong shot consists of 2 oz. of liquor.**

# RECIPES

## *Rum Drinks*

Standard Drink				
	Liquor	Mixer		
Drink	Rum	Sour	Orange	Cranberry
Bermuda Triangle	2.0 oz		1.0 oz	5.0 oz
Caribbean Screwdriver	2.0 oz		6.0 oz	
Cranberry Kiss	2.0 oz	1.0 oz		5.0 oz
Hurricane	2.0 oz		3.0 oz	3.0 oz
Hurricane Punch	2.0 oz	1.0 oz	4.0 oz	1.0 oz
Marina Punch	2.0 oz	4.0 oz	1.0 oz	1.0 oz
My Pleasure	2.0 oz			6.0 oz
Orange Plunge	2.0 oz	1.0 oz	5.0 oz	
Picnic Punch	2.0 oz	1.0 oz	1.0 oz	4.0 oz
Plankwalk	2.0 oz	5.0 oz		1.0 oz
Rum	1.0 oz			
Rum Punch	2.0 oz	2.0 oz	2.0 oz	2.0 oz
Rum Sour	2.0 oz	6.0 oz		
Rum Stone Sour	2.0 oz	5.0 oz	1.0 oz	
Rum Sunburst	2.0 oz		5.0 oz	1.0 oz
Suntwist	2.0 oz	3.0 oz	3.0 oz	
Tangy Cran	2.0 oz	3.0 oz		3.0 oz

**Note: Strong shot consists of 2 oz. of liquor.**

# REFILLING THE MIXED DRINK MAKER™

Once any liquor or juice falls below the top surface of the Basin Cover, it's time to refill the tank.

## To refill the juice tanks:

1. Pull juice tanks from the Basin Cover.
2. Twist the tank caps counter clockwise to remove and clockwise to replace.
3. Refill tanks with pre-chilled juice for the best results.
4. Re-install the juice tanks.

## To refill the liquor tank:

**TIP: Purchase extra liquor tanks from our website and have pre-chilled liquor tanks ready to go! [www.margaritavillecarg.com](http://www.margaritavillecarg.com)**

### Option 1 – Refill the tank with the same liquor.

1. Pull the Liquor Tank from the Basin Cover **(the machine will recognize that it has been removed)**.
2. Twist the tank caps counter clockwise to remove and clockwise to replace.
3. Refill the tank with the same liquor as before.
4. Select your liquor on the display screen, which will confirm your chosen liquor.
5. Install the Liquor Tank. The machine will automatically load the same recipes.

### Option 2 – Refill the tank with a different kind of liquor.

1. Pull the Liquor Tank from the Basin Cover **(the machine will recognize that it has been removed)**.
2. Twist the tank caps counter clockwise to remove and clockwise to replace.
3. Fill the tank with your desired liquor, but don't install tank just yet!
4. Rotate the Drink Wheel to the desired liquor then press the Center Button to confirm.
5. Because you are selecting a different kind of liquor, the machine will prompt you to flush out the previous liquor remaining in the Basin. Make sure to have a glass in the Cup Station to catch the flushed-out liquor. Enjoy your shot!
6. Re-install the Liquor Tank. Based on the new liquor selected, the machine will automatically load corresponding recipes.

---

# CLEANING AND MAINTENANCE

---

1. Remove all (4) tanks from the Basin Cover and pour out any remaining liquor and juice before cleaning the tanks.
2. Turn off and unplug the Mixed Drink Maker. Place it on a clean dry surface.
3. Remove the Basin Cover by pressing down on both Basin Cover Release Buttons at the same time to release cover.
4. Remove the Basin by carefully lifting with both hands to avoid spilling any liquid. If liquid spills inside the machine, it must be manually removed with a paper towel.
5. Remove the Drink Chute by carefully lifting straight up to avoid spilling liquid. If liquid spills inside the machine, it must be manually cleaned.
6. Remove the Party Pad by placing your index finger in the center hole and pull out. Slowly slide the Party Pad Drip Tray out towards the front and empty any liquid. Both parts are dishwasher safe.
7. The Basin and Drink Chute can be cleaned in the dishwasher.
8. The liquor and juice tanks should be hand-washed, but can be placed in the top rack of the dishwasher.
9. The Basin Cover is not dishwasher safe.
10. Use a damp cloth to clean the outside of the unit.

**TIP:** For the expert party host who doesn't like to waste a drop - here's a tip to use up what's left in the basin.

1. Pull all the Mixer Tanks.
2. Choose a drink with all 4 ingredients. Press button and pour the drink.
3. Pull the Liquor Tank.
4. Flush out the final 2 oz. of liquor and have your final drink and shot for the night!

**WARNING: UNPLUG THE MIXED DRINK MAKER BEFORE CLEANING AND NEVER IMMERSE THE MAIN BODY IN WATER.**



---

## REPLACEMENT PARTS

---

### Replacement Parts List:

1. Liquor Tank (Cap Included)
2. Cranberry Juice Tank (Cap Included)
3. Sour Mix Tank (Cap Included)
4. Orange Juice Tank (Cap Included)
5. Liquor Tank Cap Only
6. Cranberry Juice Tank Cap Only
7. Sour Mix Tank Cap Only
8. Orange Juice Tank Cap Only
9. Basin
10. Basin Cover
11. Drink Chute
12. Cup Station
13. Drip Tray

**NOTE: To obtain replacement parts visit our website at [www.margaritavillecargo.com](http://www.margaritavillecargo.com) or call our toll-free customer service number 1-877-689-2737.**

## Don'ts

---

**DO NOT** use carbonated drinks in the Mixed Drink Maker. Carbonated drinks will not dispense properly.

---

**DO NOT** remove any liquor or juice tank while the machine is making a drink.

---

**DO NOT** place hot liquids, foods or ice into the liquor or juice tanks.

---

**DO NOT** use Orange Juice with pulp in the Orange Juice Tank.

---

**DO NOT** turn off the Mixed Drink Maker while it is cooling down. If the machine heats up (usually if 30 drinks are made back-to-back), it will need a cool-down period of 30 minutes or it could overheat and become damaged.

---

**DO NOT** move the unit once tanks are installed.

---

**DO NOT** rapidly remove and replace liquor tank. It may damage sensor.

---

## Do's

---

**DO** chill your ingredients in the tanks prior to installing them for the best results..

---

**DO** allow the machine to cool down properly if the Cool Down screen appears.

---

**DO** follow the Cleaning and Maintenance instructions prior to first using the machine.

---

**DO** unplug the unit when not in use.

---



# NOTES



**DO NOT RETURN THIS PRODUCT TO THE PLACE OF PURCHASE**

For product questions:

Jarden Consumer Services U.S.A.

1-877-689-2737

[www.margaritavillecargo.com](http://www.margaritavillecargo.com)

©2011 Sunbeam Products, Inc., doing business as Jarden Consumer Solutions. All rights reserved. Distributed by Sunbeam Products, Inc., doing business as Jarden Consumer Solutions, Boca Raton, Florida 33431

Margaritaville® is a registered trademark of Margaritaville®.

Printed in China

P. N. 150502



## Free Manuals Download Website

<http://myh66.com>

<http://usermanuals.us>

<http://www.somanuals.com>

<http://www.4manuals.cc>

<http://www.manual-lib.com>

<http://www.404manual.com>

<http://www.luxmanual.com>

<http://aubethermostatmanual.com>

Golf course search by state

<http://golfingnear.com>

Email search by domain

<http://emailbydomain.com>

Auto manuals search

<http://auto.somanuals.com>

TV manuals search

<http://tv.somanuals.com>