

W8LCD

Compact, Vertically Arrayable Three-Way Enclosure

features

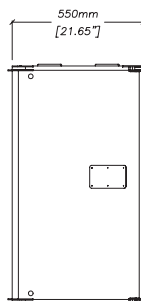
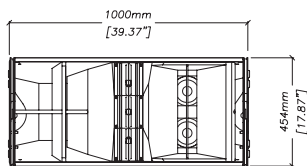
- ▶ Stand-alone vertically arrayable enclosure
- ▶ Line array downfill element
- ▶ Consistent 120° (-6dB) horizontal mid and HF pattern control
- ▶ 20° (-6dB) vertical dispersion
- ▶ Amplitude shading switch
- ▶ Fast, integral rigging system, compatible with W8LC, flying frame and lifting bar
- ▶ 7:1 safety factor with arrays of up to 6 cabinets
- ▶ ViewPoint™ array optimisation software
- ▶ Loudspeaker management preset files for a wide variety of configurations
- ▶ Compatible with WLX, WSX, WS218X and S218

applications

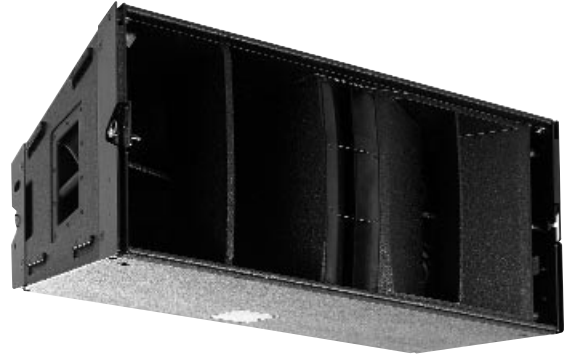
- ▶ Short to medium throw (<40m) arrays of 1 to 4 cabinets
- ▶ Vertically arrayed downfill for W8LC systems
- ▶ Theatre Sound Reinforcement
- ▶ Live Sound Reinforcement
- ▶ Corporate Events
- ▶ Fixed Installations

The Martin Audio W8LCD is a compact, wide dispersion, vertically arrayable enclosure. It can be used individually and in small quantities for short to medium throw (<40m) applications as well as a downfill element for the W8LC. Its 20° vertical dispersion requires fewer cabinets to cover the same area as a conventional line array element, yet it still benefits from the smooth, predictable coverage of a vertically coupled system.

overall dimensions



W8LCD



technical specifications

TYPE	Three-way, compact, vertically arrayable enclosure
FREQUENCY RESPONSE (5)	60Hz-18kHz ± 3dB -10dB @45Hz
DRIVERS	12" (300mm)/4" (100mm) voice coil, neodymium, Hybrid™ bass horn loaded 2 x 6.5" (165mm)/1.5" (37.5mm) coil drivers, horn loaded 3 x 1" (25mm) exit HF compression drivers, horn loaded
RATED POWER (2)	LF: 1000W AES, 4000W peak MF: 200W AES, 800W peak HF: 100W AES, 400W peak
SENSITIVITY (6)	LF: 103dB MF: 106dB HF: 109dB
MAXIMUM SPL (calculated @ 1m)	LF: 133dB continuous, 139dB peak MF: 129dB continuous, 135dB peak HF: 128dB continuous, 134dB peak
NOMINAL IMPEDANCE	LF: 8 ohms MF: 8 ohms HF: 8 ohms
DISPERSION (-6dB)	120° horizontal 140° horizontal @ -10dB 20° vertical
CROSSOVER	300Hz, 3kHz active
ENCLOSURE	Vertical trapezoid with 10° wall angle, multi-laminate birch ply construction
FINISH	Textured grey or black paint
PROTECTIVE GRILLE	Grey or black perforated steel
CONNECTORS	2 x Neutrik NL8
FITTINGS	Proprietary rigging system 2 x bar handles and 2 x pocket handles Side mounted interlocking skids
DIMENSIONS (inc. wheelboard)	(W) 1000mm x (H) 454mm x (D) 550mm (656mm) (W) 39.4ins x (H) 17.9ins x (D) 21.7ins (27.8ins)
WEIGHT (ex. wheelboard)	67kg (148lbs)

Century Point, Halifax Road, Cressex Business Park,
High Wycombe, Buckinghamshire HP12 3SL, England.
Telephone: +44 (0)1494 535312 Facsimile: +44 (0)1494 438669
E-mail: info@martin-audio.com
All information is Copyright © 2006 Martin Audio Ltd.



www.martin-audio.com

Free Manuals Download Website

<http://myh66.com>

<http://usermanuals.us>

<http://www.somanuals.com>

<http://www.4manuals.cc>

<http://www.manual-lib.com>

<http://www.404manual.com>

<http://www.luxmanual.com>

<http://aubethermostatmanual.com>

Golf course search by state

<http://golfingnear.com>

Email search by domain

<http://emailbydomain.com>

Auto manuals search

<http://auto.somanuals.com>

TV manuals search

<http://tv.somanuals.com>