

TEM/TEL SERIES

Endless Remote Glass Door Merchandisers With Top Mounted Coil

MEDIUM TEMP MODELS (24" WIDE DOORS)

- TEM-3-24 TEM-5-24
 TEM-4-24 TEM-6-24

LOW TEMP MODELS (24" WIDE DOORS)

- TEL-3-24 TEL-5-24
 TEL-4-24 TEL-6-24

MEDIUM TEMP MODELS (30" WIDE DOORS)

- TEM-2-30 TEM-4-30
 TEM-3-30 TEM-5-30

LOW TEMP MODELS (30" WIDE DOORS)

- TEL-2-30 TEL-4-30
 TEL-3-30 TEL-5-30



TEL-5-30
 (shown with ends installed)

FEATURES

CONSTRUCTION

- White painted galvanized steel cabinet
- 2" foamed-in-place "zero ODP" urethane insulation
- A large heavy duty rub rail and kick plate to protect from abuse
- Five white cantilever epoxy-coated welded wire shelves with price tag molding per door
- Shelves rated to support 110 lbs. each
- Product Stop feature to prevent product from falling behind shelves
- Pre-wired cabinet-to-cabinet electrical terminal block connectors
- Standard joining kits when linking together multi-door modules
- Ends must be ordered separately
- Standard TEM vertical lighting features T-12 high output bulbs while TEL models are equipped with T-10 bulbs
- Optional electronic lighting and additional horizontal lighting available, consult factory
- Pre-piped drain in bottom of each section for cleaning purposes (with removable plug)

DOORS

- Choice of 24" or 30" wide glass doors
- Self-closing door hinge with adjustable torsion control
- Standard black door and frame (optional colors available)

REFRIGERATION

- All models designed for remote refrigeration systems
- Refrigerant:
 - TEM models: R-22
 - TEL models: R-404A
- Factory tested refrigeration system
- Oversized raceway for ease of refrigeration piping
- Full length heavy-duty copper tube evaporator coil
- Choice of electric or hot gas defrost
- Pre-mounted expansion valve
- Temperature ranges:
 - TEM models: 34° to 41°F (1° to 5°C)
 - TEL models: 0° to -15°F (18° to -26°C)

- R-factor (insulation efficiency rating): 18.75

WARRANTY

- One year limited parts

OPTIONS

- Right or left hand end kits
- Custom colors
- Electronic lighting
- Additional horizontal lighting
- Partitions
- Kickplate
- Additional 30" cantilever shelves
- Baskets



TEM/TEL SERIES

ENDLESS REMOTE GLASS DOOR MERCHANDISERS WITH TOP MOUNTED COIL

TECHNICAL SPECIFICATIONS

| MODEL | DIMENSIONS (in.) | | | DIMENSIONS (mm) | | | NO. OF DOORS | NO. OF SHELVES | SHELVING AREA SQ. FT. | USABLE CU. FT. | PRODUCT FACING SQ. FT. | NO. OF INTERIOR LIGHTS |
|-----------------------------|---------------------------------|--------------------------------|----|-----------------|-----|------|--------------|----------------|-----------------------|----------------|------------------------|------------------------|
| | L* | D | H | L* | D | H | | | | | | |
| 24" WIDE DOOR MODELS | | | | | | | | | | | | |
| TEM/TEL-3-24 | 74 ¹ / ₄ | 37 ³ / ₄ | 80 | 1886 | 959 | 2032 | 3 | 15 | 58.0 | 66.0 | 33.0 | 4 |
| TEM/TEL-4-24 | 98 | 37 ³ / ₄ | 80 | 2489 | 959 | 2032 | 4 | 20 | 78.0 | 87.0 | 43.0 | 5 |
| TEM/TEL-5-24 | 121 ³ / ₄ | 37 ³ / ₄ | 80 | 3092 | 959 | 2032 | 5 | 25 | 97.0 | 108.0 | 54.0 | 6 |
| TEM/TEL-6-24 | 145 ¹ / ₂ | 37 ³ / ₄ | 80 | 3696 | 959 | 2032 | 6 | 30 | 116.0 | 129.0 | 64.0 | 7 |
| 30" WIDE DOOR MODELS | | | | | | | | | | | | |
| TEM/TEL-2-30 | 63 ¹ / ₂ | 37 ³ / ₄ | 80 | 1613 | 959 | 2032 | 2 | 10 | 49.0 | 56.0 | 23.0 | 3 |
| TEM/TEL-3-30 | 94 ¹ / ₂ | 37 ³ / ₄ | 80 | 2400 | 959 | 2032 | 3 | 15 | 73.0 | 84.0 | 42.0 | 4 |
| TEM/TEL-4-30 | 124 ¹ / ₂ | 37 ³ / ₄ | 80 | 3162 | 959 | 2032 | 4 | 20 | 97.0 | 110.0 | 55.0 | 5 |
| TEM/TEL-5-30 | 155 | 37 ³ / ₄ | 80 | 3937 | 959 | 2032 | 5 | 25 | 122.0 | 137.0 | 68.0 | 6 |

*Add 2" (51mm) to length for each end or insulated partition.

NOTE: Medium temp units furnished with R-22 expansion valve unless otherwise specified. Low temp units furnished with R-404A expansion valve unless otherwise specified.

ELECTRICAL

| MODEL | 120 VOLT - 1 PHASE | | | 230 VOLT - 1 PHASE | |
|-----------------------------------|--------------------|---------|------|--------------------|---------|
| | LIGHTS | HEATERS | FANS | FANS | DEFROST |
| MEDIUM TEMP 24" WIDE DOORS | | | | | |
| TEM-3-24 | 2.3 | 2.3 | 1.0 | N/A | N/A |
| TEM-4-24 | 2.9 | 3.1 | 1.0 | N/A | N/A |
| TEM-5-24 | 3.5 | 3.3 | 1.4 | N/A | N/A |
| TEM-6-24 | 5.2 | 4.8 | 1.4 | N/A | N/A |
| MEDIUM TEMP 30" WIDE DOORS | | | | | |
| TEM-2-30 | 1.7 | 2.0 | 1.0 | N/A | N/A |
| TEM-3-30 | 3.2 | 2.6 | 1.0 | N/A | N/A |
| TEM-4-30 | 4.8 | 3.5 | 1.4 | N/A | N/A |
| TEM-5-30 | 4.8 | 4.3 | 1.4 | N/A | N/A |
| LOW TEMP 24" WIDE DOORS | | | | | |
| TEL-3-24 | 4.0 | 5.4 | N/A | 0.5 | 6.7 |
| TEL-4-24 | 5.0 | 7.3 | N/A | 0.5 | 8.0 |
| TEL-5-24 | 6.0 | 8.9 | N/A | 0.7 | 9.2 |
| TEL-6-24 | 8.4 | 9.4 | N/A | 0.7 | 10.1 |
| LOW TEMP 30" WIDE DOORS | | | | | |
| TEL-2-30 | 3.0 | 3.5 | N/A | 0.5 | 5.0 |
| TEL-3-30 | 5.2 | 5.5 | N/A | 0.5 | 6.7 |
| TEL-4-30 | 5.0 | 7.3 | N/A | 0.7 | 9.5 |
| TEL-5-30 | 7.8 | 9.2 | N/A | 0.7 | 12.5 |

SHIPPING WEIGHTS

| MODEL | SHIP WT. LB/KG |
|-----------------------------------|----------------|
| MEDIUM TEMP 24" WIDE DOORS | |
| TEM-3-24 | 1325/602 |
| TEM-4-24 | 1520/691 |
| TEM-5-24 | 1720/782 |
| TEM-6-24 | 2140/973 |
| MEDIUM TEMP 30" WIDE DOORS | |
| TEM-2-30 | 755/343 |
| TEM-3-30 | 1435/652 |
| TEM-4-30 | 1670/759 |
| TEM-5-30 | 2000/909 |
| LOW TEMP 24" WIDE DOORS | |
| TEL-3-24 | 1245/566 |
| TEL-4-24 | 1300/591 |
| TEL-5-24 | 1720/782 |
| TEL-6-24 | 2140/973 |
| LOW TEMP 30" WIDE DOORS | |
| TEL-2-30 | 1085/493 |
| TEL-3-30 | 1325/602 |
| TEL-4-30 | 1915/870 |
| TEL-5-30 | 1955/889 |

LISTINGS



HOOKUP

Hardwire, remote refrigeration.

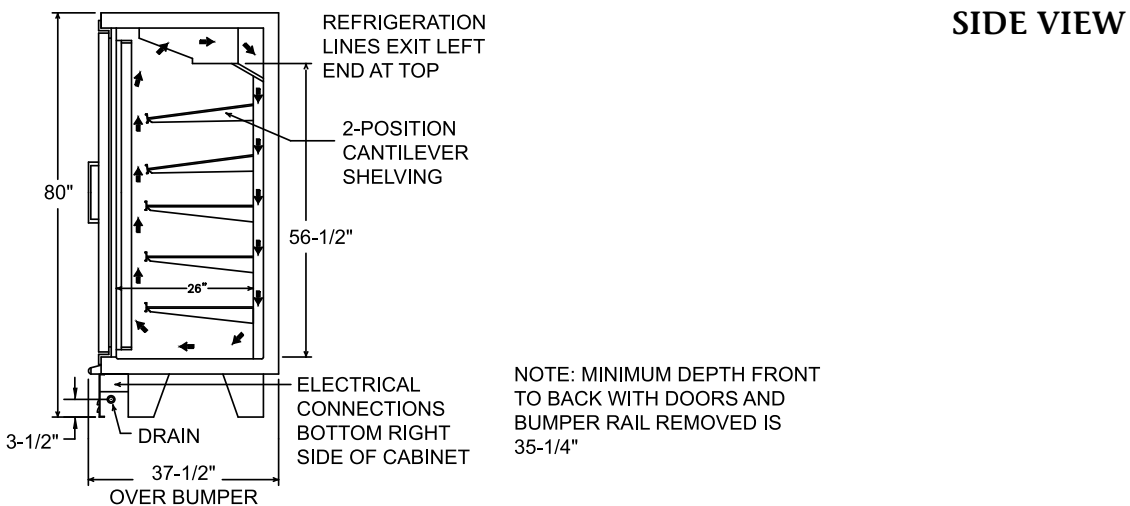
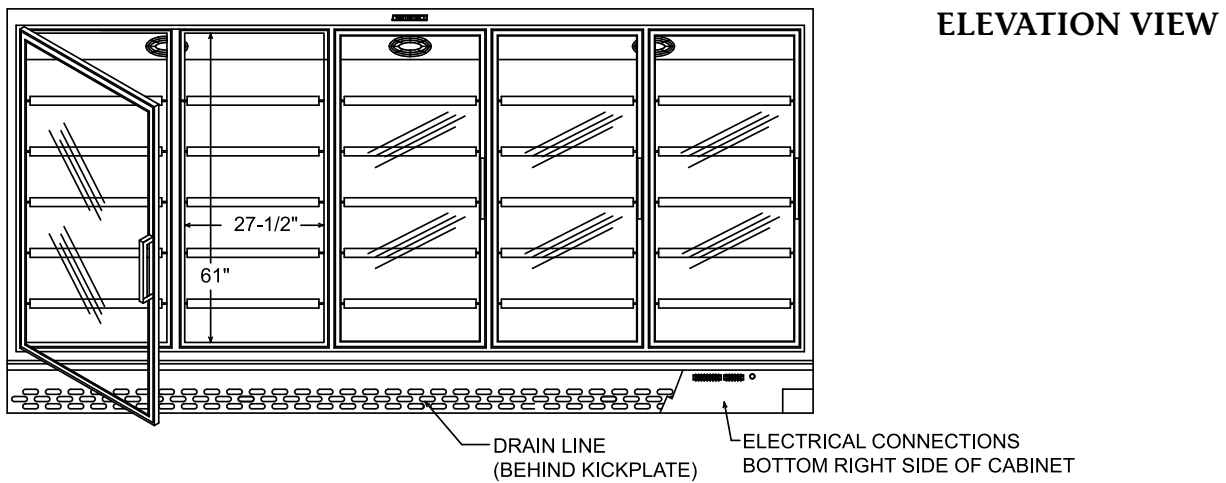
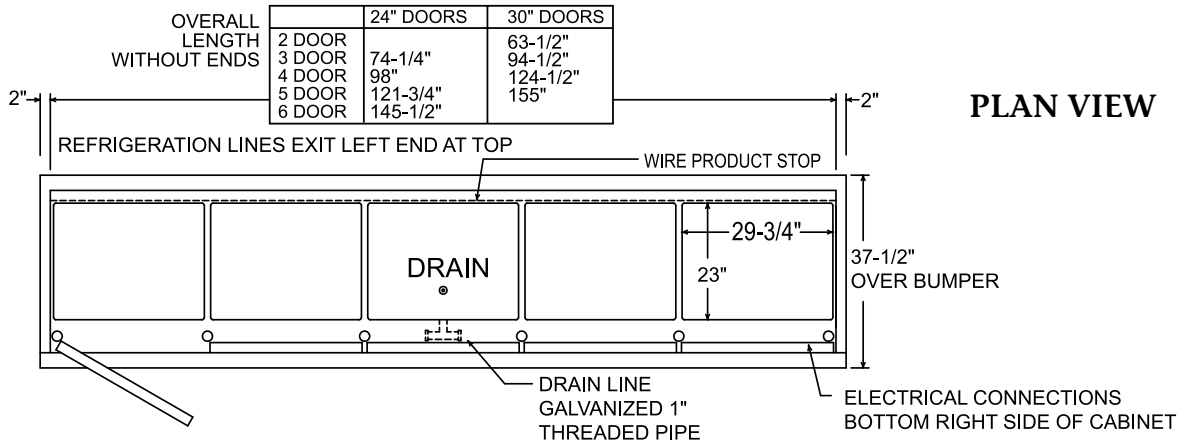
MODULES REQUIRED FOR 24" WIDE DOOR LINEUPS & BTU PERFORMANCE DATA

| NO. OF DOORS | MODULES REQUIRED | | | | TOTAL OVERALL LENGTH WITH ONE PAIR OF 2" ENDS | +20°F SUCTION MIN. BTUs (75°F STORE, 55% RH, +35°F AVERAGE PRODUCT TEMP.) | -11°F SUCTION MIN. BTUs (75°F STORE, 55% RH, -3°F AVERAGE PRODUCT TEMP.) | -18°F SUCTION MIN. BTUs (75°F STORE, 55% RH, -12°F AVERAGE PRODUCT TEMP.) |
|--------------|------------------|--------|--------|--------|---|---|--|---|
| | 3 DOOR | 4 DOOR | 5 DOOR | 6 DOOR | | | | |
| 3 | 1 | | | | 78 ¹ / ₄ " | 3750 | 4750 | 5125 |
| 4 | | 1 | | | 102" | 4600 | 6150 | 6550 |
| 5 | | | 1 | | 125 ³ / ₄ " | 5750 | 7625 | 8300 |
| 6 | | | | 1 | 149 ¹ / ₂ " | 6900 | 9150 | 9960 |
| 7 | 1 | 1 | | | 176 ¹ / ₄ " | 8050 | 10,675 | 11,620 |
| 8 | | 2 | | | 200" | 9200 | 12,200 | 13,280 |
| 9 | | 1 | 1 | | 223 ³ / ₄ " | 10,350 | 13,725 | 14,940 |
| 10 | | | 2 | | 247 ¹ / ₂ " | 11,500 | 15,250 | 16,600 |
| 11 | | | 1 | 1 | 271 ¹ / ₄ " | 12,650 | 16,775 | 18,260 |
| 12 | | | | 2 | 295" | 13,800 | 18,300 | 19,920 |
| 13 | | 2 | 1 | | 321 ³ / ₄ " | 14,950 | 19,825 | 21,580 |
| 14 | | 2 | | 1 | 345 ¹ / ₂ " | 16,100 | 21,350 | 23,240 |
| 15 | | | 3 | | 369 ¹ / ₄ " | 17,250 | 22,875 | 24,900 |
| 16 | | 4 | | | 396" | 18,400 | 24,400 | 26,560 |
| 17 | | | 1 | 2 | 416 ³ / ₄ " | 19,550 | 25,925 | 28,220 |
| 18 | | | | 3 | 440 ¹ / ₂ " | 20,700 | 27,450 | 29,880 |
| 19 | | 1 | 3 | | 467 ¹ / ₄ " | 21,850 | 28,975 | 31,540 |
| 20 | | | 4 | | 491" | 23,000 | 30,500 | 33,200 |
| 21 | 1 | | | 3 | 514 ³ / ₄ " | 24,150 | 32,025 | 34,860 |
| 22 | | 1 | | 3 | 538 ¹ / ₂ " | 25,300 | 33,550 | 36,520 |
| 23 | | | 1 | 3 | 562 ¹ / ₄ " | 26,450 | 35,075 | 38,180 |
| 24 | | | | 4 | 586" | 27,600 | 36,600 | 39,840 |
| 25 | | | 5 | | 612 ³ / ₄ " | 28,750 | 38,125 | 41,500 |

MODULES REQUIRED FOR 30" WIDE DOOR LINEUPS & BTU PERFORMANCE DATA

| NO. OF DOORS | MODULES REQUIRED | | | | TOTAL OVERALL LENGTH WITH ONE PAIR OF 2" ENDS | +20°F SUCTION MIN. BTUs (75°F STORE, 55% RH, +35°F AVERAGE PRODUCT TEMP.) | -11°F SUCTION MIN. BTUs (75°F STORE, 55% RH, -3°F AVERAGE PRODUCT TEMP.) | -18°F SUCTION MIN. BTUs (75°F STORE, 55% RH, -12°F AVERAGE PRODUCT TEMP.) |
|--------------|------------------|--------|--------|--------|---|---|--|---|
| | 2 DOOR | 3 DOOR | 4 DOOR | 5 DOOR | | | | |
| 2 | 1 | | | | 67 ¹ / ₂ " | 2800 | 3300 | 3550 |
| 3 | | 1 | | | 98 ¹ / ₂ " | 3750 | 4750 | 5125 |
| 4 | | | 1 | | 128 ¹ / ₂ " | 4600 | 6150 | 6550 |
| 5 | | | | 1 | 159" | 5750 | 7625 | 8300 |
| 6 | | 2 | | | 193" | 6900 | 9150 | 9960 |
| 7 | 1 | | | 1 | 222 ¹ / ₂ " | 8050 | 10,675 | 11,620 |
| 8 | | 1 | | 1 | 253 ¹ / ₂ " | 9200 | 12,200 | 13,280 |
| 9 | | | 1 | 1 | 283 ¹ / ₂ " | 10,350 | 13,725 | 14,940 |
| 10 | | | | 2 | 314" | 11,500 | 15,250 | 16,600 |
| 11 | | 2 | | 1 | 348" | 12,650 | 16,775 | 18,260 |
| 12 | 1 | | | 2 | 377 ¹ / ₂ " | 13,800 | 18,300 | 19,920 |
| 13 | | 1 | | 2 | 408 ¹ / ₂ " | 14,950 | 19,825 | 21,580 |
| 14 | | | 1 | 2 | 438 ¹ / ₂ " | 16,100 | 21,350 | 23,240 |
| 15 | | | | 3 | 469" | 17,250 | 22,875 | 24,900 |
| 16 | | 2 | | 2 | 503" | 18,400 | 24,400 | 26,560 |
| 17 | 1 | | | 3 | 532 ¹ / ₂ " | 19,550 | 25,925 | 28,220 |
| 18 | | 1 | | 3 | 563 ¹ / ₂ " | 20,700 | 27,450 | 29,880 |
| 19 | | | 1 | 3 | 593 ¹ / ₂ " | 21,850 | 28,975 | 31,540 |
| 20 | | | | 4 | 624" | 23,000 | 30,500 | 33,200 |
| 21 | | 2 | | 3 | 658" | 24,150 | 32,025 | 34,860 |
| 22 | 1 | | | 4 | 687 ¹ / ₂ " | 25,300 | 33,550 | 36,520 |
| 23 | | 1 | | 4 | 718 ¹ / ₂ " | 26,450 | 35,075 | 38,180 |
| 24 | | | 1 | 4 | 748 ¹ / ₂ " | 27,600 | 36,600 | 39,840 |
| 25 | | | | 5 | 779" | 28,750 | 38,125 | 41,500 |

TECHNICAL DRAWINGS





TEM/TEL SERIES

ENDLESS REMOTE GLASS DOOR MERCHANDISERS
WITH TOP MOUNTED COIL

REQUIRED CONDENSING UNITS

Use this chart to determine the correct condensing unit for your endless lineup.

Unless already indicated, add suffix "B" for one phase or "C" for three phase model.

| NO. OF DOORS | +35°F AVERAGE PRODUCT TEMP. +20°F SUCTION 75°F AIR CONDITIONED STORE 55% RELATIVE HUMIDITY | | | -3°F AVERAGE PRODUCT TEMP. -11°F SUCTION 75°F AIR CONDITIONED STORE 55% RELATIVE HUMIDITY | | | -12°F AVERAGE PRODUCT TEMP. -18°F SUCTION 75°F AIR CONDITIONED STORE 55% RELATIVE HUMIDITY | | |
|--------------|---|-----------|-----------|--|----------|----------|---|----------|----------|
| | COND. UNIT REQUIRED FOR AIR TEMP. ENTERING CONDENSER* | | | COND. UNIT REQUIRED FOR AIR TEMP. ENTERING CONDENSER* | | | COND. UNIT REQUIRED FOR AIR TEMP. ENTERING CONDENSER* | | |
| | 90°F | 100°F | 110°F | 90°F | 100°F | 110°F | 90°F | 100°F | 110°F |
| 2 | MHHX0061B | MHHX0061B | MHHX0061B | MHLZ0071 | MHLZ0071 | MHLZ0071 | MHLZ0091 | MHLZ0091 | MHLZ0091 |
| 3 | MHHX0061B | MHHX0061B | MHHX0061B | MHLZ0071 | MHLZ0091 | MHLZ0091 | MHLZ0091 | MHLZ0121 | MHLZ0121 |
| 4 | MHHX0061B | MHHX0081B | MHHX0081B | MHLZ0091 | MHLZ0091 | MHLZ0121 | MHLZ0121 | MHLZ0121 | MHLZ0121 |
| 5 | MHHX0081B | MHHX0081B | MHHX0111 | MHLZ0091 | MHLZ0121 | MHLZ0121 | MHLZ0121 | MCLZ0141 | MCLZ0171 |
| 6 | MHHX0111 | MHHX0111 | MHHX0111 | MHLZ0121 | MHLZ0121 | MCLZ0141 | MCLZ0141 | MCLZ0171 | MDLZ0201 |
| 7 | MHHX0111 | MHHX0111 | MHHX0151 | MHLZ0121 | MCLZ0141 | MCLZ0171 | MCLZ0171 | MDLZ0201 | MDLZ0201 |
| 8 | MHHX0151 | MHHX0151 | MHHX0151 | MCLZ0141 | MCLZ0171 | MCLZ0171 | MDLZ0201 | MDLZ0201 | MDLZ0231 |
| 9 | MHHX0151 | MHHX0151 | MHHX0191 | MCLZ0171 | MCLZ0171 | MDLZ0201 | MDLZ0231 | MDLZ0231 | MDLZ0291 |
| 10 | MHHX0151 | MHHX0191 | MHHX0191 | MCLZ0171 | MDLZ0201 | MDLZ0231 | MDLZ0231 | MDLZ0291 | MDLZ0291 |
| 11 | MHHX0191 | MHHX0191 | MHHX0221 | MDLZ0201 | MDLZ0231 | MDLZ0231 | MDLZ0291 | MDLZ0291 | MDLZ0331 |
| 12 | MHHX0191 | MHHX0221 | MHHX0221 | MDLZ0231 | MDLZ0231 | MDLZ0291 | MDLZ0291 | MDLZ0291 | MDLZ0331 |
| 13 | MHHX0191 | MHHX0221 | MHHX0251 | MDLZ0231 | MDLZ0291 | MDLZ0291 | MDLZ0291 | MDLZ0331 | BCLZ0750 |
| 14 | MHHX0221 | MHHX0251 | MHHX0251 | MDLZ0291 | MDLZ0291 | MDLZ0291 | MDLZ0331 | BCLZ0750 | BCLZ1000 |
| 15 | MHHX0251 | MHHX0251 | MHHX0301 | MDLZ0291 | MDLZ0291 | MDLZ0331 | BCLZ0750 | BCLZ0750 | BCLZ1000 |
| 16 | MHHX0251 | MHHX0251 | MHHX0301 | MDLZ0291 | MDLZ0331 | BCLZ0750 | BCLZ0750 | BCLZ1000 | BCLZ1000 |
| 17 | MHHX0251 | MHHX0301 | MHHX0351 | MDLZ0291 | MDLZ0331 | BCLZ0750 | BCLZ1000 | BCLZ1000 | BCLZ1000 |
| 18 | MHHX0301 | MHHX0301 | MHHX0351 | MDLZ0331 | BCLZ0750 | BCLZ1000 | BCLZ1000 | BCLZ1000 | BCLZ1000 |
| 19 | MHHX0301 | MHHX0351 | MHHX0351 | BCLZ0750 | BCLZ0750 | BCLZ1000 | BCLZ1000 | BCLZ1000 | BCLZ1000 |
| 20 | MHHX0301 | MHHX0351 | MHHX0441 | BCLZ0750 | BCLZ1000 | BCLZ1000 | BCLZ1000 | BCLZ1000 | BCLZ1500 |
| 21 | MHHX0351 | MHHX0351 | MHHX0441 | BCLZ0750 | BCLZ1000 | BCLZ1000 | BCLZ1000 | BCLZ1000 | BCLZ1500 |
| 22 | MHHX0351 | MHHX0441 | MHHX0441 | BCLZ1000 | BCLZ1000 | BCLZ1000 | BCLZ1000 | BCLZ1500 | BCLZ1500 |
| 23 | MHHX0351 | MHHX0441 | MHHX0441 | BCLZ1000 | BCLZ1000 | BCLZ1000 | BCLZ1000 | BCLZ1500 | BCLZ1500 |
| 24 | MHHX0441 | MHHX0441 | MHHX0441 | BCLZ1000 | BCLZ1000 | BCLZ1000 | BCLZ1500 | BCLZ1500 | BCLZ1500 |
| 25 | MHHX0441 | MHHX0441 | MHHX0501 | BCLZ1000 | BCLZ1000 | BCLZ1000 | BCLZ1500 | BCLZ1500 | BCLZ1500 |

*Condensing unit and line size based on 100' line run.

See the Master-Bilt Condensing Unit & Refrigeration Systems I/O Manual for other conditions.

For other than high capacity condensing units, consult factory.

BID SPECIFICATIONS

Item no. TEM-_____ and/or TEL-_____.

Provide _____ () Endless Remote Glass Door Merchandisers - Top Mounted model no. TEM-_____ and/or TEL-_____.

Merchandiser to be constructed of white painted galvanized steel with 2" foamed-in-place "zero ODP" urethane insulation. Merchandiser may be used as a stand-alone unit or combined in a modular endless design.

Standard TEM model vertical lighting features T-12 high output bulbs while TEL models are equipped with T-10 bulbs.

Merchandiser will contain five white cantilever epoxy-coated welded wire shelves with price tag molding per door. In addition, a Product Stop feature will

prevent product from falling behind shelves. Other standard features to include:

- Heavy-duty rub rail and kick plate
- Pre-wired cabinet-to-cabinet electrical terminal block connectors
- Standard joining kits when linking together multi-door modules
- Pre-piped drain in bottom of each section with removable plug for cleaning

Glass doors will be supplied with self-closing door hinge and provision for easy adjustment of torsion and leveling. Merchandiser supplied with either 24" or 30" wide glass doors. Door and frame provided in standard black finish with optional colors available.

The refrigeration system will be remote and will contain a full-length heavy-duty copper tube evaporator coil and pre-mounted expansion valve. There will also be a choice of electric or hot gas defrost. Additionally, merchandiser will be supplied with an oversized raceway for ease of refrigeration piping. TEM models will use R-22 refrigerant while TEL models will use R-404A.

Temperature ranges will be:

- TEM models: 34° to 41°F (1° to 5°C)
- TEL models: 0° to -15°F (18° to -26°C)

Merchandiser to be provided with one year limited parts warranty.

NOTE: Cabinet designed for optimum performance in air-conditioned area at 75°F ambient and 55% relative humidity. All specifications subject to change without notice.

MBMASTER-BILT
Refrigeration Solutions

908 Highway 15 North • New Albany, MS 38652
PHONE: 800-647-1284 or 662-534-9061 • FAX: 800-232-3966 or 662-534-6049 • www.master-bilt.com

Standex
Food Service Equipment Group

1260-7/08-web
©Master-Bilt Products division of Standex International, Inc. All rights reserved. Printed in U.S.A.

Download from Www.Somanuals.com. All Manuals Search And Download.

Free Manuals Download Website

<http://myh66.com>

<http://usermanuals.us>

<http://www.somanuals.com>

<http://www.4manuals.cc>

<http://www.manual-lib.com>

<http://www.404manual.com>

<http://www.luxmanual.com>

<http://aubethermostatmanual.com>

Golf course search by state

<http://golfingnear.com>

Email search by domain

<http://emailbydomain.com>

Auto manuals search

<http://auto.somanuals.com>

TV manuals search

<http://tv.somanuals.com>