



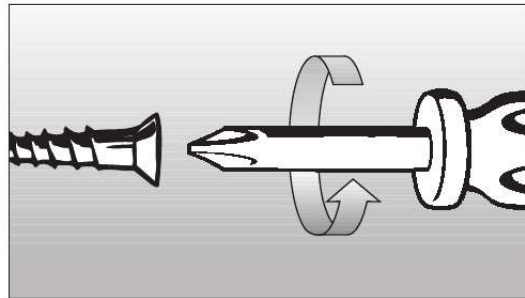
myPDFmanuals

You can read the recommendations in the user guide, the technical guide or the installation guide for MIELE KM 191 ELECTRIC COOKTOP. You'll find the answers to all your questions on the MIELE KM 191 ELECTRIC COOKTOP in the user manual (information, specifications, safety advice, size, accessories, etc.). Detailed instructions for use are in the User's Guide.

User manual MIELE KM 191 ELECTRIC COOKTOP
User guide MIELE KM 191 ELECTRIC COOKTOP
Operating instructions MIELE KM 191 ELECTRIC COOKTOP
Instructions for use MIELE KM 191 ELECTRIC COOKTOP
Instruction manual MIELE KM 191 ELECTRIC COOKTOP

Miele

Installation Instructions



Gas Cooktop
KM 320



USA CDN

To prevent accidents and machine damage, read these instructions **before** installation or use.

M.-Nr. 05 403 561



[Your user manual](#)
[MIELE KM 191 ELECTRIC COOKTOP](#)

Manual abstract:

Any pipe connections must be made using a thread sealant approved for gas connections. Failure to correctly install these items could lead to a gas leak and subsequent explosion. The gas connection must be made in accordance with local codes or, in the absence of local codes, with: the National Fuel Gas Code, ANSI Z 21.1 / NFPA 54 for the USA or - the current Can / CGA B 149.1 and .2 Installation Codes for gas burning appliances for Canada. Make sure that the maximum gas supply pressure, before the gas pressure regulator, is never more than 1 /2 psi for both natural gas or LP gas. The minimum supply pressure to get the required gas input is: 6" w.c. for natural gas 10" w.

c. for LP gas. 10 Gas connection Gas pressure regulator A pressure regulator that is convertible from natural to LP gas (Propane) or vice versa is included with the appliance. The included regulator corresponds with the gas type of the cooktop. Verify before installing.

The adjusted pressure is: natural gas - 4" w.c. LP gas - 10" w.c. A straight thread adapter, from 1/2" ISO 7-1 to 1/2" NPT is connected to your gas pressure regulator.

If an elbow adapter is necessary for your particular installation, a customized one can be obtained free of charge from the Miele Technical Service Department. Do not use a standard elbow, it may cause a gas leak. As shown in the diagram, the included regulator and adapter must be used when connecting the Miele cooktop to your gas supply. These items has been customized by Miele to meet all applicable safety requirements. Make sure the regulator is easily accessible for adjustment after the appliance has been installed. For convenience, an AGA or CGA approved flexible stainless steel gas hose (accordion type) may be used between the gas connection and the regulator. This will allow the appliance to be lifted out of the countertop for cleaning or servicing. Make sure that any drawers, cabinet doors, etc., do not rub on this gas hose. Do not use any regulator/adapter unless it has been supplied by Miele.

Doing so may cause a gas leak. If there is any doubt concerning installation contact the Miele Technical Service Department: U 1-800-999-1360 techserv@mieleusa.com V 1-800-565-6435 service@miele.ca After connecting the appliance check all fittings for gas leaks e.g. with soapy water. When installed properly, the flame will be steady and quiet. It will also have a sharp, blue inner core that will vary in length proportional to the burner size. Flame adjustment will not be necessary. 11 Gas connection Nominal rating table NG (Natural gas) Normal burner Max.

output Min. output Fast burner Max. output Min. output All burners Max. output 42200 12.

36 32000 9.38 11600 1700 3.40 0.50 10000 1600 2.93 0.

47 BTU/hr 9500 1400 kW 2.78 0.41 Nominal rating LP (Liquid propane gas) BTU/hr 6000 1000 kW 1.75 0.29 12 Converting to another type of gas The cooktop should have been ordered for connection to either natural or LP gas (propane). If the cooktop is not configured for the proper type of gas connection please contact your Miele Dealer. If the appliance is to be connected to a type of gas other than it was originally configured for, both the regulator and burners must be converted. A conversion kit is available as an optional accessory from the Miele Technical Service Department. 13 14 15 Alteration rights reserved / 3606 M.-Nr.



[Your user manual](#)

[MIELE KM 191 ELECTRIC COOKTOP](#)

Free Manuals Download Website

<http://myh66.com>

<http://usermanuals.us>

<http://www.somanuals.com>

<http://www.4manuals.cc>

<http://www.manual-lib.com>

<http://www.404manual.com>

<http://www.luxmanual.com>

<http://aubethermostatmanual.com>

Golf course search by state

<http://golfingnear.com>

Email search by domain

<http://emailbydomain.com>

Auto manuals search

<http://auto.somanuals.com>

TV manuals search

<http://tv.somanuals.com>