



Installation Guide

**MIL-H1120 4-Port
Ethernet SOHO Hub**

**MIL-H1130 8-Port
Ethernet SOHO Hub**

Introduction

The MIL-H1100 family of small SOHO Ethernet hubs brings unmatched flexibility to LAN environments. These hubs provide your network with multiple wiring connections for up to 4 or 8 unshielded twisted pair (UTP) ports.

These hubs constantly monitor each port for signal quality and will automatically disconnect a device producing noise or excessive collisions. The device will automatically be reconnected when the error condition is cleared. Data packets which exceed the maximum legal length for IEEE802.3 Ethernet packets are automatically truncated. This prevents a device from blocking the network by transmitting a continuous data stream or extra long packet. The hubs completely retime and restore full-amplitude waveforms for each retransmitted packet. A full-length preamble is also generated, insuring packet integrity across the network. Compact, light and robust, the 4- or 8-port hub provides the ideal solution for your small, medium, or large 10Base-T LAN environment. Now you can truly take advantage of 10Base-T in your network, and your installation will be an easy task.

Before going any further, examine the package and make sure that you have all of the items listed below:

- 4- or 8-port Ethernet hub
- Installation Guide
- Power adapter

If you are missing any of these items, contact your dealer immediately.

Features

- Comply with IEEE802.3
- 4 or 8 fully-shielded RJ-45 10Base-T ports
- A slide switch for the 1st port cascading
- Power LED, collision LED, and link/activity LED's
- Automatic partitioning of the faulty ports
- External power supply
- FCC Class A, CE Class A, VCCI Class A
- UL/CUL, TUV

Description

The 4- or 8-port hub is easy to install and requires no special training. You should, however, read the following instructions carefully before proceeding with the installation. Figure 1 and Figure 2 show the layout of the front panel and rear panel of the 4- or 8-port hub.

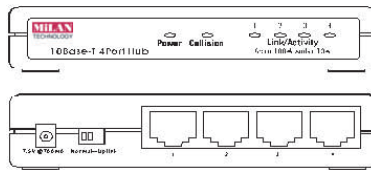


Figure 1. 4-Port Hub: Front Panel and Rear Panel

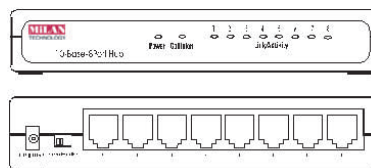


Figure 2. 8-Port Hub: Front Panel and Rear Panel

Caution:

Before you begin the installation, check the AC power line voltage used in your area. The AC power adapter that was included with your hub should match the power supply voltage used in your area. Using an AC power adapter with an incorrect AC voltage may damage your hub.

AC input power: equal to the AC power voltage used in your area.

DC output power: 7.5 V @ 500 mA (4-port)
7.5 V @ 700 mA (8-port)

10Base-T Station to Hub Connection

Use the following procedure to connect a 10Base-T Ethernet station to the hub.

- Make sure that the hub's slide switch is selected to NORMAL mode for the 1st port.
- Connect one end of the cable to the 1st port of the hub and the other end to the station, as shown in Figure 3.

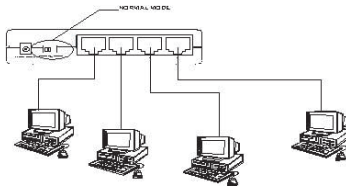


Figure 3. Connecting to Station

Interconnecting Hubs

Note the following when interconnecting two or more hubs:

- Make sure that the primary hub's switch is set to UPLINK mode for the 1st port and the secondary hub's switch is set to NORMAL mode.
- Connect one end of the cable to the 1st port of the hub and the other end to another hub, as shown in Figure 4a and Figure 4b.

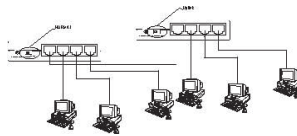


Figure 4a. Interconnecting to Hubs

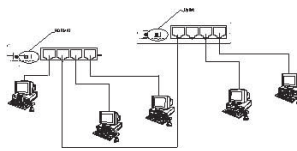
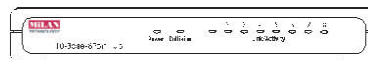


Figure 4b. Interconnecting to Hubs

LED Indicators

Figure 5 shows the LED indicators, which indicate the link status of each of the ports, whether the hub is receiving power and whether there is network activity.



The table below lists the status and descriptions of the LED's.

LED	COLOR	STATUS	DESCRIPTION
Power	Green	On	Power is on
Collision	Amber	On	Collision is detected
Link/activity	Green	On	The 10 Mbps link pulse is detected
	Green	Flashing	There is activity on the segment

Specifications

Standards

IEEE802.3 10Base-T

Network Interface and Cable Specifications

RJ-45 ports for use with 10Base-T cabling

Maximum Segment Lengths

10Base-T (UTP) 100 meters maximum

Indicators

Power LED

Collision LED

Link/activity per port

Physical Dimensions

4-port hub: 100.5 mm x 78 mm x 27 mm

8-port hub: 153 mm x 78 mm x 27 mm

Environment

Operating temperature: 0°C to +40°C

Storage: -20°C to +70°C

Humidity: operating, 10% to 90% RH

External Power Adapter Voltage/frequency:
Input: 120 VAC @ 60 Hz or 230 VAC @ 50 Hz
Output: 7.5 VDC @ 500 mA (4-port)
7.5 VDC @ 700 mA (8-port)

Five-year Limited Warranty

MiLAN Technology warrants to the original consumer or purchaser that each of its products and all components thereof, will be free from defects in material and/or workmanship for a period of five years from the original factory shipment date. Any warranty hereunder is extended to the original consumer or purchaser and is not assignable.

MiLAN Technology makes no express or implied warranties including, but not limited to, any implied warranty of merchantability or fitness for a particular purpose, except as expressly set forth in this warranty. In no event shall MiLAN Technology be liable for incidental or consequential damages, costs, or expenses arising out of or in connection with the performance of the product delivered hereunder. MiLAN Technology will in no case cover damages arising out of the product being used in a negligent fashion or manner.

Trademarks

© 2000 MiLAN, the MiLAN logo and MiLAN Technology are either trademarks or registered trademarks of Digi International, Inc. in the United States and/or other countries. All other Trademarks are the property of their respective holders.

To Contact MiLAN Technology
For prompt response when calling for service
information, have the following information ready:

- Product serial number and rev
- Date of purchase
- Vendor or place of purchase

You can reach MiLAN Technology technical support at:

E-mail: support@milan.com

Telephone: +1.408.744.2751

Fax: +1.408.744.2771

MiLAN Technology
1299 Orleans Drive
Sunnyvale, CA 94089-1138
United States of America

Telephone: +1.408.744.2775

Fax: -1.408.744.2793

<http://www.milan.com>
info@milan.com

©Copyright 2000 MiLAN Technology

P/N 90000140 Rev C

Free Manuals Download Website

<http://myh66.com>

<http://usermanuals.us>

<http://www.somanuals.com>

<http://www.4manuals.cc>

<http://www.manual-lib.com>

<http://www.404manual.com>

<http://www.luxmanual.com>

<http://aubethermostatmanual.com>

Golf course search by state

<http://golfingnear.com>

Email search by domain

<http://emailbydomain.com>

Auto manuals search

<http://auto.somanuals.com>

TV manuals search

<http://tv.somanuals.com>