

Model No. **SV-MP35V**
SV-MP25V



Caution

This unit is not waterproof and should not be exposed to excessive moisture.

The model number and serial number of this product can be found on either the back or the bottom of the unit.

Please note them in the space provided below and keep for future reference.

MODEL NUMBER **SV-** _____
SERIAL NUMBER _____

Panasonic Consumer Electronics Company
Division of Matsushita Electric Corporation of America
One Panasonic Way Secaucus, New Jersey 07094 <http://www.panasonic.com/>
Panasonic Sales Company
Division of Matsushita Electric of Puerto Rico, Inc. ("PSC")
Ave. 65 de Infantería, Km. 9.5 San Gabriel Industrial Park, Carolina, Puerto Rico 00985

© 2004 Matsushita Electric Industrial Co., Ltd.
Printed in Taiwan

RQTT0633-P
M0104SF0

Dear Customer

Thank you for purchasing this product.

Before connecting, operating or adjusting this product, please read these instructions completely. Please keep this manual for future reference.

■ Supplied accessories

Use numbers indicated when asking for replacements.

1 Pair of stereo earphones: LOBAB0000178 (For SV-MP25V)

1 Pair of stereo headphones: LOBAD0000170 (For SV-MP35V)

1 USB cable: K1HA05AD0001

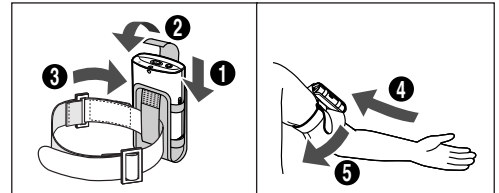
1 CD-ROM (USB Driver)

1 Arm Band:

RKHT0002A-K

1 Carrying Case:

RFCT0021-K



To order accessories contact 1-800-332-5368 or Web site
(<http://www.pasc.panasonic.com>).

User memo

DATE OF PURCHASE _____
DEALER NAME _____
DEALER ADDRESS _____
TELEPHONE NUMBER _____

P

En

- **Windows Media Player (Version 9.0 or later recommended)** Free download from <http://www.microsoft.com/downloads/>

- Supports playback of MP3 and WMA music files
- Built-in microphone for voice recording
- Built-in FM tuner with recording function
- Portable data storage device (Plugs in directly to your PC)
- Each play list (PLAYER, FM RADIO, IC RECORDER) can contain up to 99 tracks.

These tables show the mode menu items available in the PLAYER, FM RADIO, and IC RECORDER modes.

■ PLAYER

Mode	Options
SOUND	NORMAL/ ROCK/ JAZZ/ CLASSIC/ POP/ USER (BASS, TREBLE)
PLAY	NORMAL/ ONE REPEAT/ ALL REPEAT/ RANDOM
INFO.	Information (TITLE/ ARTIST/ BIT RATE)
ERASE	SINGLE TRACK/ PLAY LIST/ ALL

■ FM RADIO

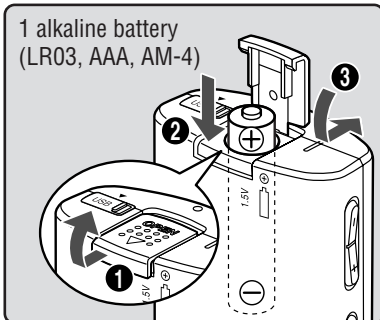
Mode	Options
BAND STEP	50 kHz/ 100 kHz/ 200 kHz
RECEPTION	NORMAL/ CITY

■ IC RECORDER

Mode	Options
RECORD	LP/ SP/ HQ
ERASE	SINGLE TRACK/ ALL
SPEED	NORMAL/ SLOW 1/ SLOW 2

Battery (not included)

1 alkaline battery (LR03, AAA, AM-4)



Battery indicator



Full

Empty:

Replace with a fresh battery

If rechargeable batteries are to be used, rechargeable batteries manufactured by Panasonic are recommended.

System Requirements

OS: Microsoft® Windows® 98SE, Windows® Me, Windows® 2000 Professional, Windows® XP Home Edition/Professional
Drive: CD-ROM Drive

• The player and USB Driver cannot be used on Microsoft® Windows® 3.1, Windows® 95, Windows® 98, Windows NT® and Macintosh®.

USB Driver:

- Operation on an upgraded OS is not guaranteed.
- Operation on an OS other than the one pre-installed is not guaranteed.
- Multi-CPU or Multi-boot environments are not supported.
- Only users having system administrator (Administrator) authority can use this software.

• Microsoft, the Microsoft logo, the Windows, Windows logo, Windows NT and Windows Media are either trademarks or registered trademarks of Microsoft Corporation in the United States and other countries.



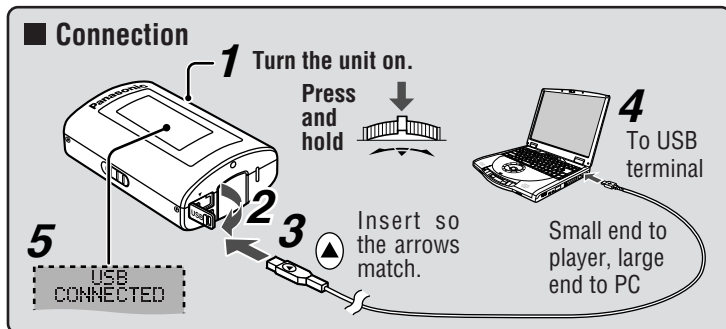
• WMA is a compression format developed by Microsoft Corporation. It achieves the same sound quality as MP3 with a file size that is smaller than that of MP3.

• MPEG Layer-3 audio decoding technology licensed from Fraunhofer IIS and Thomson multimedia.

• Other names of systems and products mentioned in these instructions are usually the registered trademarks or trademarks of the manufacturers who developed the system or product concerned.

The™ and® marks are not used to identify registered trademarks and trademarks in these instructions.

Connecting to a computer and downloading files



After connection

- **Windows® ME, 2000, or XP:** The computer automatically finds and installs the driver for the player.
 - **Windows® 98SE:** Put the included CD-ROM in your disc drive, then follow the instructions on the computer screen to install the driver.
- The player appears in My Computer or Explorer as a removable disk or device.

Downloading MP3 and WMA

1. In My Computer or Explorer, open the player's folder (removable disk or device).
 2. Open the PLAYER folder.
 3. Copy and paste or drag and drop the MP3/WMA files from your computer's folder into the PLAYER folder.
- "DOWNLOAD" appears on the player's display. Downloading is complete 10 seconds after "USB CONNECTED" re-appears.
 - You can first put files into a new folder and then put that folder into the PLAYER folder. The folders are treated as sublists by the player and the names appear when you select play lists.

- Note**
- Use only alphanumeric characters, no more than 36 words.
 - If there are no ID3 tags, the display shows the "filename.mp3".
 - Supports MP3 ID3 V1 tags, ID3 V2 tags and WMA tags.
 - Music protected by Windows Media Player cannot be played even if you download it.
 - You cannot play MP3/WMA files that are in the player through the computer.

Saving Data

- The data recorded using this unit's IC Recorder or FM RADIO can be uploaded to a PC.
- MP3 and WMA files in this unit can't be uploaded to a PC.
- You can use this unit as a removable disc for saving PC data by connecting the USB cable to a PC. (→above)

Specifications

Memory size:	SV-MP25V: 128 MB SV-MP35V: 256 MB
Supported sampling frequency:	MP3 32 kHz, 44.1 kHz, and 48 kHz WMA 8 kHz to 44.1 kHz
Supported bit-rates:	MP3 8 kbps to 320 kbps (128 kbps is recommend) WMA 32 kbps to 192 kbps (96 kbps is recommend)
No. of channels:	Stereo, 2 channels (PLAYER, FM RADIO) Mono, 1 channel (IC RECORDER)
Frequency response:	20 Hz to 20,000 Hz (+0 dB, -6 dB) (PLAYER) 300 Hz to 4,300 Hz (IC RECORDER, HQ mode) 37 dB (IC RECORDER, HQ mode)
Mic S/N:	37 dB (IC RECORDER, HQ mode)
Radio Frequency range (FM):	87.9 MHz to 107.9 MHz (200 kHz steps) 87.5 MHz to 108.0 MHz (100 kHz / 50 kHz steps)
Output:	4.5 mW + 4.5 mW (16 Ω, M3 jack for SV-MP25V) (32 Ω, M3 jack for SV-MP35V)
Power supply:	DC 1.5 V (one LR03, AAA, AM-4 battery)
Approximate play times:	10 hours (alkaline battery, PLAYER) 6 hours (alkaline battery, FM RADIO)
Approximate recording times:	15 hours (alkaline battery, IC RECORDER, LP mode) 5 hours 30 minutes (alkaline battery, FM RADIO)
Maximum dimensions (W×H×D):	43.8 × 61.5 × 21.9 mm (1 3/4" × 2 7/16" × 7/8")
Cabinet dimensions (W×H×D):	42.1 × 60.0 × 21.9 mm (1 11/16" × 2 3/8" × 7/8")
Mass:	45.5 g with battery (1.605 oz) 34.1 g without battery (1.200 oz)

- Specifications are subject to change without notice.
- The play time shown depends on operating conditions.
- Mass and dimensions are approximate.
- MB means one million bytes. Useable capacity will be less.

Maintenance

Clean with a soft, dry cloth.
Do not use any type of abrasive pad, scouring powder or solvent such as alcohol or benzene.

Displays

NO TRACK PLAY	• There is no audio data in the player.
ERROR	• The data format isn't standard.
LOW BATTERY	• The battery is dead. <While playing or recording> Change the battery. <While downloading> 1. Cancel the download from your PC. 2. After confirming "SAFE REMOVE" in the display, remove the USB cable. 3. Change the battery.
KEY LOCKED HOLD	• The HOLD switch is on.
MEMORY FULL	• Memory is full.
WARNING TRACK OVER	• You have tried to record more than 99 tracks into a play list.

Troubleshooting guide

Before requesting service, make the below checks. If you are in doubt about some of the check points, or if the remedies indicated in the chart do not solve the problem:

Contact the Panasonic Customer Call Center at 1-800-211-7262, or the website (<http://www.panasonic.com/contactinfo>), or the website (<http://www.panasonic.com/support>).

No operation	• The HOLD function is on. • Replace the battery if it is flat.
No sound or there is a lot of noise	• Ensure the earphone plug is inserted firmly. • Wipe the plug clean with a clean cloth. • Separate the unit from other equipment, such as mobile phones and televisions. • Turn up the volume.
Play doesn't resume from the track where I stopped play	• This doesn't work if: You download, record, or delete files. The random play mode is on.
Play doesn't start from the first track	• The random play mode may be on. • Play usually resumes from the track where you last stopped play. Use skip to return to the first track.
The unit stops working	• Take the battery out for about 5 seconds, then reinsert it.
The display is too dark or too light	• Adjust the contrast. While the display is on, switch HOLD to on, then while pressing and holding [-MODE/ENTER], press the volume [+](darker) or [-](lighter).
Play doesn't start immediately	• Depending on the amount of data in the unit, it may take some time for play to start after downloading / recording or changing the battery.

Product service

1. Damage requiring service

- The unit should be serviced by qualified service personnel if:
- (a) Objects or liquids have gotten into the unit; or
 - (b) The unit has been exposed to rain; or
 - (c) The unit does not operate normally or exhibits a marked change in performance; or
 - (d) The unit has been dropped or the cabinet damaged.

2. Servicing

Do not attempt to service the unit beyond that described in these operating instructions. Refer all other servicing to authorized servicing personnel.

3. Replacement parts

When parts need replacing ensure the servicer uses parts specified by the manufacturer or parts that have the same characteristics as the original parts. Unauthorized substitutes may result in fire, electric shock, or other hazards.

4. Safety check

After repairs or service, ask the servicer to perform safety checks to confirm that the unit is in proper working condition.

Product information

For product information or assistance with product operation:
Contact the Panasonic Customer Call Center at 1-800-211-7262, or the website (<http://www.panasonic.com/contactinfo>), or the website (<http://www.panasonic.com/support>).

Cautions

- Leave some slack in the cord of the earphones and the neck lanyard if you wind them around the unit.
- Do not:
 - disassemble, remodel, drop, or allow the unit to get wet.
 - use or store in locations directly exposed to sunlight, corrosive gases, a heat vent, or a heating appliance.
 - use or store in humid or dusty locations.
 - use force to open the battery lid.

Batteries

- Do not peel off the covering on batteries and do not use if the covering has been peeled off.
- Align the poles + and - correctly when inserting batteries.
- Remove batteries if you do not intend to use the unit for a long time.
- Do not throw into fire, short-circuit, disassemble, or subject to excessive heat.
- Do not attempt to recharge dry cell batteries.

Allergies

Discontinue use if you experience discomfort with the earphones or any other parts that directly contact your skin. Continued use may cause rashes or other allergic reactions.

Listening caution



Do not play your headphones or earphones at a high volume. Hearing experts advise against continuous extended play.

If you experience a ringing in your ears, reduce volume or discontinue use.

Do not use while operating a motorized vehicle. It may create a traffic hazard and is illegal in many areas. You should use extreme caution or temporarily discontinue use in potentially hazardous situations. Even if your headphones or earphones are the open-air type designed to let you hear outside sounds, don't turn up the volume so high that you can't hear what's around you.

Sound can be deceiving. Over time your hearing "comfort level" adapts to higher volumes of sound. So what sounds "normal" can actually be loud and harmful to your hearing.

Guard against this by setting your equipment at a safe level BEFORE your hearing adapts.

To establish a safe level:

- Start your volume control at a low setting.
- Slowly increase the sound until you can hear it comfortably and clearly, and without distortion.

Once you have established a comfortable sound level:

- Leave it there.

Caution:

- Use only the provided shielded interface cables when connecting to computer.
- To reduce risk of radio interference caused by headphone-, earphone- or microphone cable, only use adequate accessories with cable length less than 3 m.

CAUTION:

This equipment has been tested and found to comply with the limits for a Class B digital device, pursuant to Part 15 of the FCC Rules.

These limits are designed to provide reasonable protection against harmful interference in a residential installation. This equipment generates, uses and can radiate radio frequency energy and, if not installed and used in accordance with the instructions, may cause harmful interference to radio communications. However, there is no guarantee that interference will not occur in a particular installation. If this equipment does cause harmful interference to radio or television reception, which can be determined by turning the equipment off and on, the user is encouraged to try to correct the interference by one or more of the following measures:

- Reorient or relocate the receiving antenna.
- Increase the separation between the equipment and receiver.
- Connect the equipment into an outlet on a circuit different from that to which the receiver is connected.
- Consult the dealer or an experienced radio/TV technician for help.

FCC Caution:

- To assure continued compliance, follow the attached installation instructions.
- Use only the provided shielded interface cables when connecting to computer.

Any unauthorized changes or modifications to this equipment would void the user's authority to operate this device.

This device complies with Part 15 of the FCC Rules. Operation is subject to the following two conditions: (1) This device may not cause harmful interference, and (2) this device must accept any interference received, including interference that may cause undesired operation.

Responsible Party: Matsushita Electric Corporation of America
One Panasonic Way Secaucus, NJ, 07094 USA
Telephone No.: 1-800-211-7262

This product may receive radio interference caused by mobile telephones or other products during operation. If such interference is apparent, please increase separation between the product and the mobile telephone or other product.

Notice:

This product has parts that contains a small amount of mercury. Disposal of these materials may be regulated in your community due to environmental considerations.

For disposal or recycling information please contact your local authorities, or the Electronics Industries Alliance: <<http://www.eiae.org>>

Panasonic Consumer Electronics Company,
Division of Matsushita Electric Corporation of America
One Panasonic Way Secaucus, New Jersey 07094

Panasonic Sales Company, Division of Matsushita Electric of Puerto Rico, Inc.,
Ave. 65 de Infañtería, Km. 9.5
San Gabriel Industrial Park, Carolina, Puerto Rico 00985

Panasonic Portable Audio Products Limited Warranty

Limited Warranty Coverage

If your product does not work properly because of a defect in materials or workmanship, Panasonic Consumer Electronics Company or Panasonic Sales Company (collectively referred to as "the warrantor") will, for the length of the period indicated on the chart below, which starts with the date of original purchase ("warranty period"), at its option either (a) repair your product with new or refurbished parts, or (b) replace it with a new or a refurbished product. The decision to repair or replace will be made by the warrantor.

Product or Part Name	Parts	Labor
All Portable Audio Products except item listed below	One (1) Year	One (1) Year
Rechargeable batteries (in exchange for defective item)	Ten (10) Days	Not applicable

During the "Labor" warranty period there will be no charge for labor. During the "Parts" warranty period, there will be no charge for parts. You must mail-in your product during the warranty period. This Limited Warranty excludes both parts and labor for batteries, antennas, and cosmetic parts (cabinet). This warranty only applies to products purchased and serviced in the United States or Puerto Rico. This warranty is extended only to the original purchaser of a new product which was not sold "as is".

Mail-In Service

For assistance in the continental U.S.A. in obtaining repairs please ship the product to:

Panasonic Services Company
Customer Servicenter
Suite B
4900 George McVay Drive
McAllen, TX 78503

For assistance in Puerto Rico call Panasonic Sales Company (787)-750-4300 or fax (787)-768-2910. When shipping the unit carefully pack and send it prepaid, adequately insured and preferably in the original carton. Include a letter detailing the complaint and provide a day time phone number where you can be reached.

Customer Services Directory

Obtain Product Information and Operating Assistance; locate your nearest Dealer or Servicenter; purchase Parts and Accessories; or make Customer Service and Literature requests by visiting our Web Site at:

<http://www.panasonic.com/support>

or, contact us via the web at:

<http://www.panasonic.com/contactinfo>

You may also contact us directly at:

1-800-211-PANA (7262),

Monday-Friday 9 am-9 pm; Saturday-Sunday 10 am-7 pm, EST.

For hearing or speech impaired TTY users, TTY: 1-877-833-8855

IF REPAIR IS NEEDED DURING THE WARRANTY PERIOD THE PURCHASER WILL BE REQUIRED TO FURNISH A SALES RECEIPT/PROOF OF PURCHASE INDICATING DATE OF PURCHASE, AMOUNT PAID AND PLACE OF PURCHASE. CUSTOMER WILL BE CHARGED FOR THE REPAIR OF ANY UNIT RECEIVED WITHOUT SUCH PROOF OF PURCHASE.

Limited Warranty Limits And Exclusions

This warranty ONLY COVERS failures due to defects in materials or workmanship, and DOES NOT COVER normal wear and tear or cosmetic damage. The warranty ALSO DOES NOT COVER damages which occurred in shipment, or failures which are caused by products not supplied by the warrantor, or failures which result from accidents, misuse, abuse, neglect, mishandling, misapplication, alteration, faulty installation, set-up adjustments, misadjustment of consumer controls, improper maintenance, power line surge, lightning damage, modification, introduction of sand, humidity or liquids, commercial use such as hotel, office, restaurant, or other business or rental use of the product, or service by anyone other than a Factory Servicenter or other Authorized Servicer, or damage that is attributable to acts of God.

THERE ARE NO EXPRESS WARRANTIES EXCEPT AS LISTED UNDER "LIMITED WARRANTY COVERAGE".

THE WARRANTOR IS NOT LIABLE FOR INCIDENTAL OR CONSEQUENTIAL DAMAGES RESULTING FROM THE USE OF THIS PRODUCT, OR ARISING OUT OF ANY BREACH OF THIS WARRANTY. (As

examples, this excludes damages for lost time, travel to and from the servicer, loss of or damage to media or images, data or other memory or recorded content. The items listed are not exclusive, but are for illustration only.)

ALL EXPRESS AND IMPLIED WARRANTIES, INCLUDING THE WARRANTY OF MERCHANTABILITY, ARE LIMITED TO THE PERIOD OF THE LIMITED WARRANTY.

Some states do not allow the exclusion or limitation of incidental or consequential damages, or limitations on how long an implied warranty lasts, so the exclusions may not apply to you.

This warranty gives you specific legal rights and you may also have other rights which vary from state to state. If a problem with this product develops during or after the warranty period, you may contact your dealer or Servicenter. If the problem is not handled to your satisfaction, then write to the warrantor's Consumer Affairs Department at the addresses listed for the warrantor.

PARTS AND SERVICE, WHICH ARE NOT COVERED BY THIS LIMITED WARRANTY, ARE YOUR RESPONSIBILITY.

Accessory Purchases

Purchase Parts, Accessories and Instruction Books online for all Panasonic Products by visiting our Web Site at: <http://www.pasc.panasonic.com>

or, send your request by E-mail to: npcparts@panasonic.com

You may also contact us directly at:

1-800-332-5368 (Phone) 1-800-237-9080 (Fax Only) (Monday - Friday 9 am to 8 pm, EST.)

Panasonic Services Company

20421 84th Avenue South, Kent, WA 98032

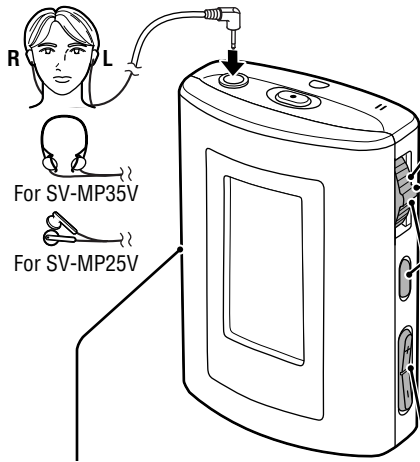
(We Accept Visa, MasterCard, Discover Card, American Express, and Personal Checks)

For hearing or speech impaired TTY users, TTY: 1-866-605-1277

Service in Puerto Rico

Matsushita Electric of Puerto Rico, Inc. Panasonic Sales Company/Factory Servicenter:
Ave. 65 de Infañtería, Km. 9.5, San Gabriel Industrial Park,
Carolina, Puerto Rico 00985
Phone (787) 750-4300, Fax (787) 768-2910

Playing tracks (PLAYER mode)

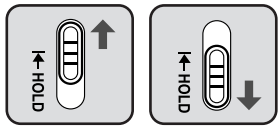


Preparation: Download (→page 2) or record tracks (→page 5)

■ HOLD switch

Switch on to prevent undesired responses when you accidentally press buttons. It prevents:

- The unit turning on unexpectedly and wasting the battery.
- Interruptions to play or recording.



HOLD ON Release (before operation)

1 Turn the unit on.

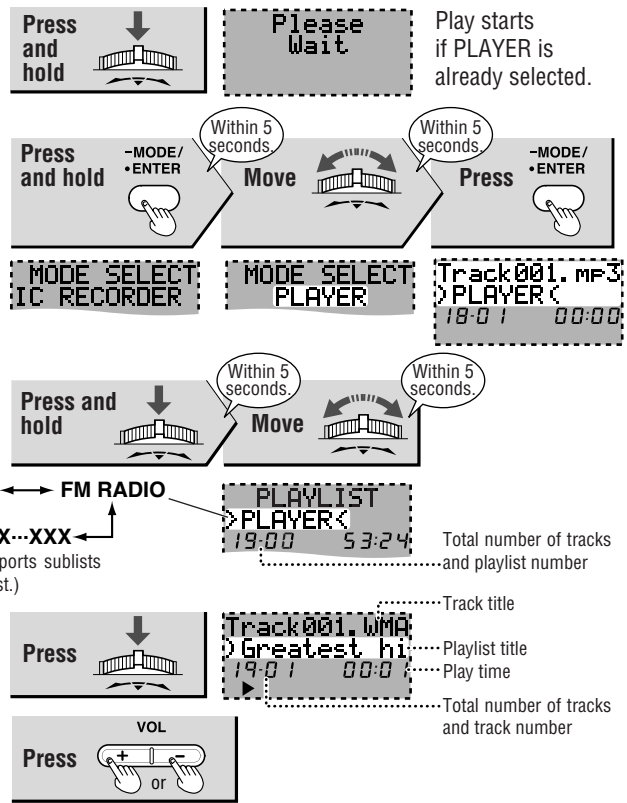
2 Select **PLAYER**.
Skip this step if **PLAYER** is already selected.

3 Select the play list.
To play recordings, select the **FM RADIO** play lists.

4 Start play.

5 Adjust the volume.

Play stops at the end of the list.



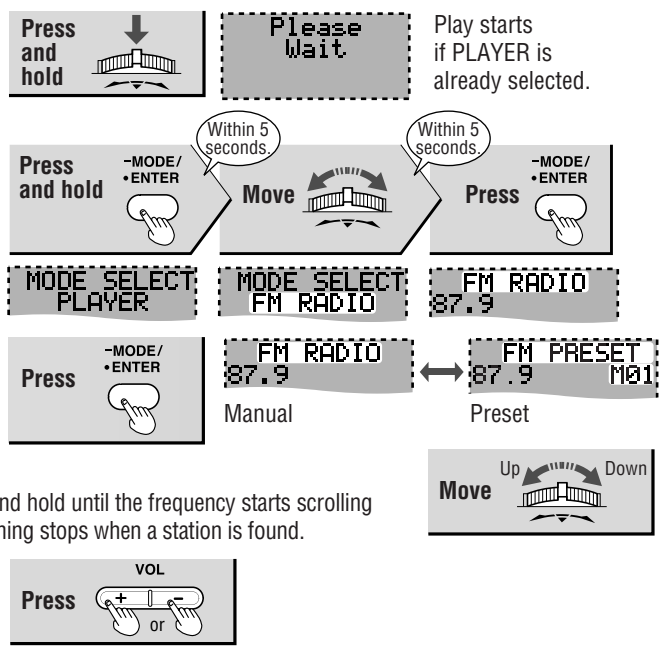
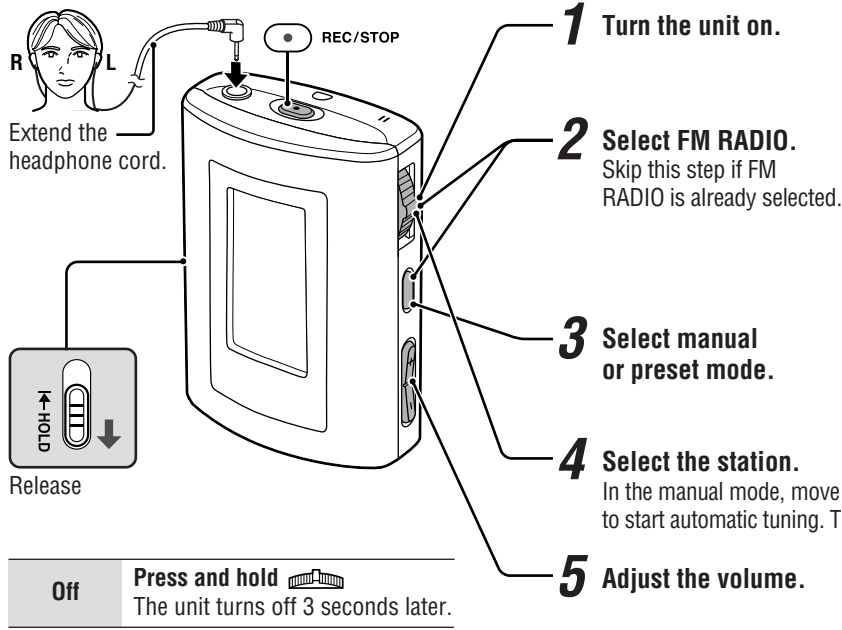
A-B repeat Play repeats between the two points.	Press [-MODE/•ENTER] at the start point (A) and once more at the end point (B). Press [-MODE/•ENTER] to cancel.	Stop and off	Press . The unit turns off 10 seconds later. Resume When you next press , play resumes from where you stopped it.	Skip	Move	forward backward
				Search	During play, move and hold	forward backward

Other PLAYER features

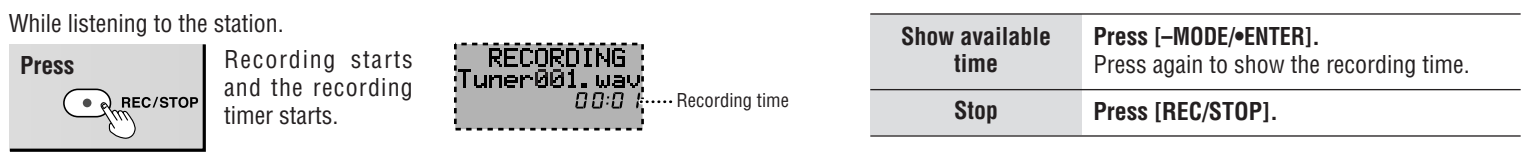
Do each step within 5 seconds

After step 2	Press and hold [-MODE/•ENTER]	Press [-MODE/•ENTER]	Move	Press [-MODE/•ENTER]	Move	Press and hold [-MODE/•ENTER]
Track001.MP3 > PLAYER < 18:01 00:00						
Changing the Sound quality NORMAL: No change ROCK: Adds impact JAZZ: Adds club-like atmosphere CLASSIC: Adds concert hall-like atmosphere POP: Clarifies the treble range USER: Adjust BASS and TREBLE between -4 and +4		PLAYER MODE SOUND MODE		SOUND MODE NORMAL	NORMAL → TREBLE ↑ ROCK → BASS ↓ JAZZ → CLASSIC ← POP →	Exit the mode menu.
Repeat and Random play NORMAL: Normal play 1⌚: 1 track repeat ⌚: All tracks repeat in a list RAND: Play all tracks in a list randomly	MODE SELECT PLAYER	PLAYER MODE PLAY MODE		PLAY MODE NORMAL	RANDOM ↔ ALL REPEAT RAND ↔ NORMAL ↔ ONE REPEAT (Normal play) 1⌚	Track001.MP3 > PLAYER < 18:01 00:00
Track Information Show title, artist and data information.		PLAYER MODE INFO. MODE		ARTIST TITLE	MP3 128Kbps MP3 or WMA or WAV	Even if you do not press and hold, it returns to the previous display after a few seconds.
Erasing the tracks and lists		ERASE MODE (→page 6)				

Using the FM radio (FM RADIO mode)



Recording the radio



To play the recording
Select PLAYER mode, then select the FM RADIO play list. (→page 4)

Other FM RADIO features

Do each step within 5 seconds

After step 3	Press and hold	Press Move	Press Move	Press Move	[MEMORY MODE] → Press [BAND STEP, RECEPTION] → Press and hold
Presetting the station 20 stations can be stored.	(Only preset mode) FM PRESET 87.9 M01	FM RADIO MEMORY MODE	Select the frequency. FREQ. SET 87.9 M01 87.9 ↔ 107.9	Select the channel. CHANNEL SET 89.9 M02 M01 ↔ M20	Exit the mode menu. FM PRESET 89.9 M02
Changing the frequency step • Change according to the area. • Note that changing the step erases all preset stations.	FM PRESET 89.9 M02 FM RADIO 88.1	MODE SELECT FM RADIO	FM RADIO BAND STEP	Select the step. BAND STEP 200 kHz 200 kHz ↔ 100 kHz 50 kHz	Exit the mode menu. FM PRESET 89.9 M02 FM RADIO 88.1
Changing the reception mode Select CITY if reception is poor.		FM RADIO RECEPTION	Select the reception mode. RECEPTION NORMAL CITY ↔ NORMAL		Even if you do not press and hold, it returns to the previous display after a few seconds.

Voice recording (IC RECORDER mode)

1 Turn the unit on. **2** Select IC RECORDER. Skip this step if IC RECORDER is already selected. **3** Start recording. **4** Speak into the microphone.

Release → Press and hold → Please Wait → Play starts if PLAYER is already selected. → Press REC/STOP → RECORDING Voice001.wav 00:00 Recording time

Press and hold [-MODE/•ENTER] → Move → Press [-MODE/•ENTER]

MODE SELECT: PLAYER → MODE SELECT: IC RECORDER → IC RECORDER: STANDBY

Show available time	Press [-MODE/•ENTER]. Press again to show the recording time.	To play recordings	Press After 1 recorded track is played the unit returns to standby. During play, press again to stop and return to standby. Resume When you next press , play resumes from where you stopped it. A-B repeat (→page 4)	Skip	Move One for forward, twice for backward.
Stop recording	Press [REC/STOP].			Search	During play, move and hold
				OFF	Press and hold (About 3 seconds)

Other IC RECORDER features

Do each step within 5 seconds

After step 2 → Press and hold [-MODE/•ENTER] → Press [-MODE/•ENTER] → Move → Press [-MODE/•ENTER] → Move → Press and hold [-MODE/•ENTER]

Selecting the record mode		IC RECORDER RECORD MODE	Select the recording mode RECORD MODE SP	<table border="1"> <thead> <tr> <th>Mode</th> <th>SV-MP25V</th> <th>SV-MP35V</th> </tr> </thead> <tbody> <tr> <td>HQ</td> <td>3</td> <td>6</td> </tr> <tr> <td>SP</td> <td>6</td> <td>13</td> </tr> <tr> <td>LP</td> <td>9</td> <td>18</td> </tr> </tbody> </table>	Mode	SV-MP25V	SV-MP35V	HQ	3	6	SP	6	13	LP	9	18	Exit the mode menu IC RECORDER STANDBY				
Mode	SV-MP25V	SV-MP35V																			
HQ	3	6																			
SP	6	13																			
LP	9	18																			
HQ: High quality SP: Standard play LP: Long play	MODE SELECT: IC RECORDER		Recording time guide (in hours) (Maximum times available when player is empty of files.)																		
Changing the play speed		IC RECORDER SPEED MODE	Select the play speed. SPEED MODE NORMAL	<table border="1"> <thead> <tr> <th>Mode</th> <th>HQ</th> <th>SP</th> <th>LP</th> </tr> </thead> <tbody> <tr> <td>NORMAL</td> <td>✓</td> <td>✓</td> <td>✓</td> </tr> <tr> <td>SLOW1</td> <td>✓</td> <td>✓</td> <td>X</td> </tr> <tr> <td>SLOW2</td> <td>✓</td> <td>X</td> <td>X</td> </tr> </tbody> </table>	Mode	HQ	SP	LP	NORMAL	✓	✓	✓	SLOW1	✓	✓	X	SLOW2	✓	X	X	Even if you do not press and hold, it returns to the previous display after a few seconds.
Mode	HQ	SP	LP																		
NORMAL	✓	✓	✓																		
SLOW1	✓	✓	X																		
SLOW2	✓	X	X																		
NORMAL: Normal SLOW 1: Slow SLOW 2: Slower																					
Erasing the tracks		ERASE MODE (→below)																			

Erasing tracks and play lists

Do each step within 5 seconds

You can erase a single track (SINGLE TRACK), a play list (PLAYLIST), or all tracks in the each player mode (ALL).

Select mode → Press and hold [-MODE/•ENTER] → Move → Press [-MODE/•ENTER] → Move → Press [-MODE/•ENTER] → Move → Press [-MODE/•ENTER] → Press [-MODE/•ENTER]

PLAYER mode (→page 4: step1,2) TRACK001.MP3 PLAYER 04:04 00:00 (Stop play) NOTE: To erase a single track, first select the play list that contains it. (→page 4: step 1-3)	MODE SELECT: PLAYER	Select ERASE mode PLAYER MODE ERASE MODE	SINGLE TRACK TRACK ERASE Track 001 04:01 03:50 Total number of tracks → Track number of tracks	TRACK ERASE 03:01 02:25 The item is erased. Next, Press and hold [-MODE/•ENTER]. The display returns to the original screen.
IC RECORDER mode (→this page: step1,2) IC RECORDER STANDBY	MODE SELECT: IC RECORDER	IC RECORDER ERASE MODE	ERASE MODE SINGLE TRACK SINGLE TRACK ↔ PLAYLIST ↔ ALL (Only PLAYER mode.)	ALBUM ERASE FM RADIO XXX...XXX (Sublists if they exist.) ALL ALL ERASE DELETE ? BE DELETED After "Deleting..." appears, the item is erased and the display automatically returns to the original screen. In PLAYER mode: The display will show "NO TRACK PLAY"

You can also erase play lists and tracks on your computer when the player's folder is open. (→page 2)

Free Manuals Download Website

<http://myh66.com>

<http://usermanuals.us>

<http://www.somanuals.com>

<http://www.4manuals.cc>

<http://www.manual-lib.com>

<http://www.404manual.com>

<http://www.luxmanual.com>

<http://aubethermostatmanual.com>

Golf course search by state

<http://golfingnear.com>

Email search by domain

<http://emailbydomain.com>

Auto manuals search

<http://auto.somanuals.com>

TV manuals search

<http://tv.somanuals.com>