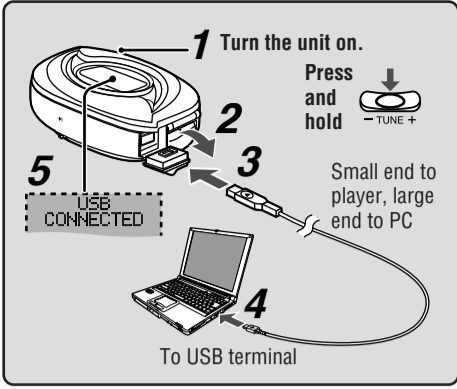




# Connecting to a computer and downloading files

## Connection



## Downloading MP3 and WMA

- In My Computer or Explorer, open the player's folder (removable disk or device).
  - Open the PLAYER folder.
  - Copy and paste or drag and drop the MP3/WMA files from your computer's folder into the PLAYER folder.
- "DOWNLOAD" appears on the player's display. Downloading is complete 10 seconds after "USB CONNECTED" re-appears.
  - You can first put files into a new folder and then put that folder into the PLAYER folder. The folders are treated as sublists by the player and the names appear when you select play lists.

**Note**

- Use only alphanumeric characters, no more than 36 words.
- If there are no ID3 tags, the display shows the "filename.mp3".
- Supports MP3 ID3 V1 tags, ID3 V2 tags and WMA tags.
- Music protected by Windows Media Player cannot be played even if you download it.
- You cannot play MP3/WMA files that are in the player through the computer.

## After connection

- Windows® Me, 2000, or XP:** The computer automatically finds and installs the driver for the player.
- Windows® 98SE:** Put the included CD-ROM in your disc drive, then follow the instructions on the computer screen to install the driver. The player appears in My Computer or Explorer as a removable disk or device.

# Displays

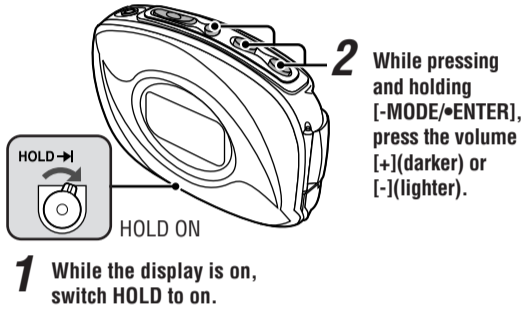
<b>NO TRACK PLAY</b>	• There is no audio data in the player.
<b>ERROR</b>	• The data format isn't standard.
<b>LOW BATTERY</b>	<ul style="list-style-type: none"> <li>The battery is dead.</li> <li>&lt;While playing&gt; Change the battery.</li> <li>&lt;While downloading&gt; <ol style="list-style-type: none"> <li>Cancel the download from your PC.</li> <li>After confirming "SAFE REMOVE" in the display, remove the USB cable.</li> <li>Change the battery.</li> </ol> </li> </ul>
<b>KEY LOCKED HOLD</b>	• The HOLD switch is on.
<b>MEMORY FULL</b>	• Memory is full.
<b>WARNING TRACK OVER</b>	• You have tried to record more than 99 tracks into a play list.

# Saving Data

- MP3 and WMA files in this unit can't be uploaded to a PC.
- You can use this unit as a removable disc for saving PC data by connecting the USB cable to a PC. (→above and page 4)

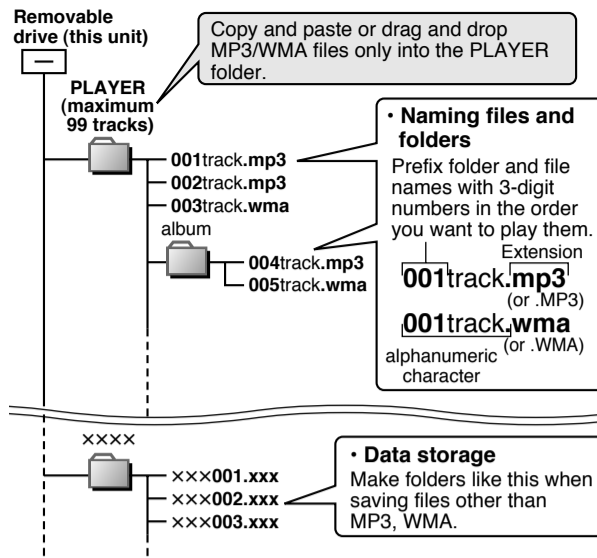
# Contrast

Adjust the contrast.



1 While the display is on, switch HOLD to on.

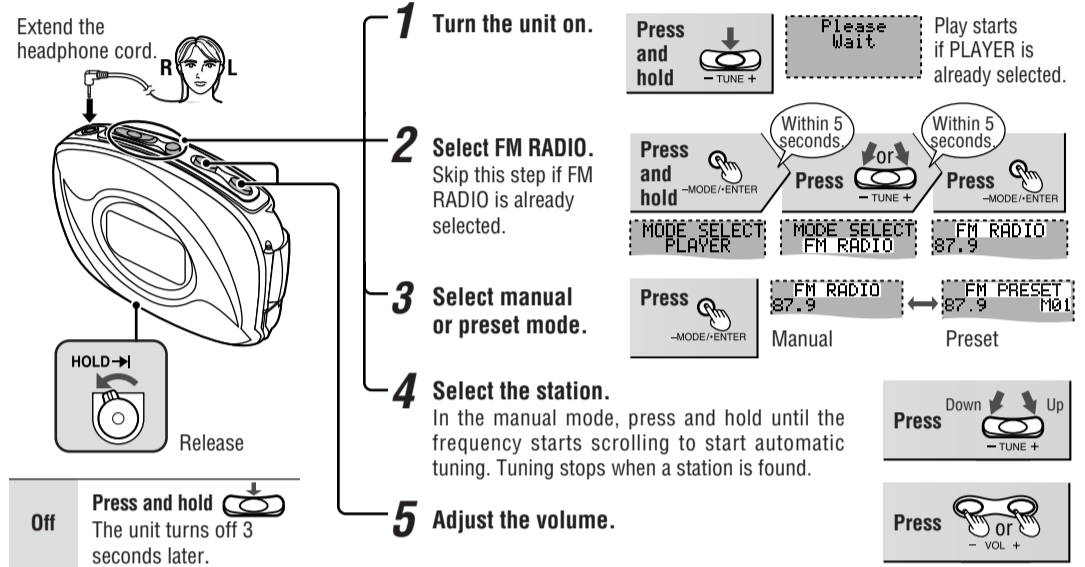
# Files and Folders Structure display on your computer



## Note

- Copy and paste or drag and drop MP3/WMA files only into the PLAYER folder. (Files put into folders other than the PLAYER folder are erased when you disconnect the USB cable.)
- You cannot upload MP3/WMA files from this unit's PLAYER folder to a computer, but you can erase them.
- You cannot play MP3/WMA files that are in this unit through the PC, even when they are connected with the USB cable.
- After downloading music data from the PC, the player automatically begins play once the USB cable is removed. Stop play if desired.
- If you try and play wave files (xxx.wav), that doesn't suit the PLAYER format, the unit may stop functioning. If this occurs, re-insert the battery to restart the unit.

# Using the FM radio (FM RADIO mode)

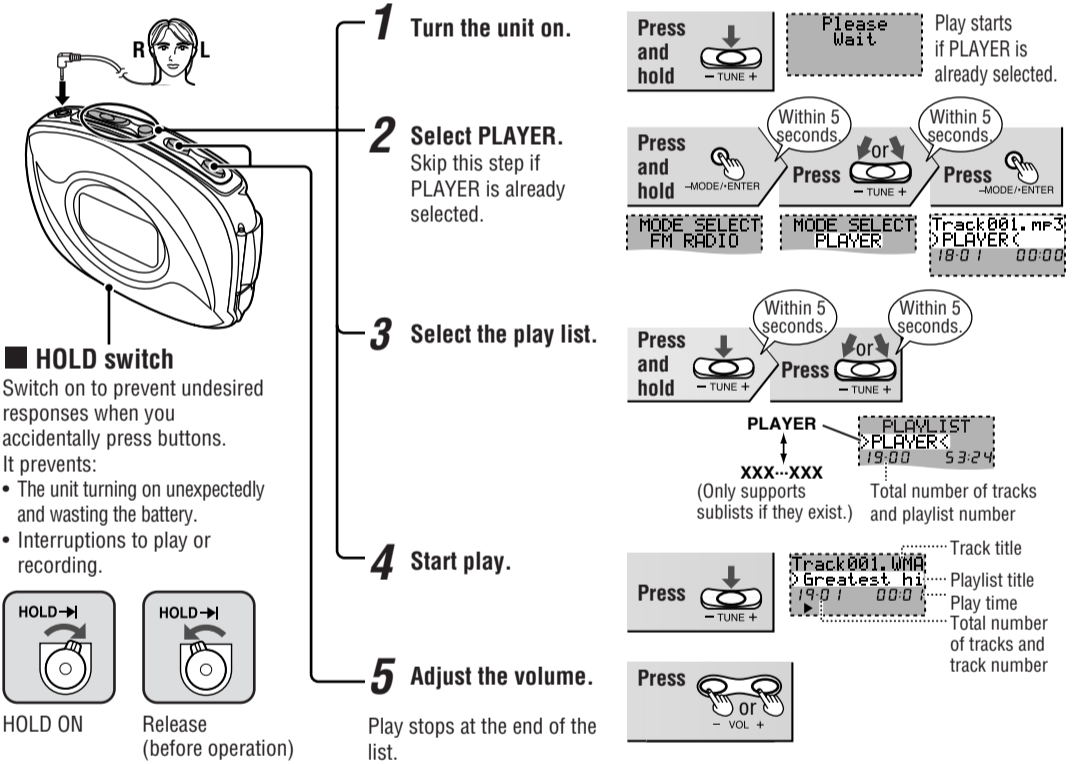


## Other FM RADIO features

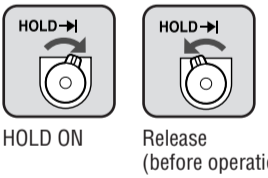
After step 3	Press and hold	Press	Press	Press	Press	Press	Press	Press	Press
<b>Presetting the station</b> 20 stations can be stored.	Press and hold	Press	Press	Press	Press	Press	Press	Press	Press
<b>Changing the frequency step</b> • Change according to the area. • Note that changing the step erases all preset stations.	Press and hold	Press	Press	Press	Press	Press	Press	Press	Press
<b>Changing the reception mode</b> Select CITY if reception is poor.	Press and hold	Press	Press	Press	Press	Press	Press	Press	Press
<b>Select the frequency.</b>	<b>Select the channel.</b>	<b>Select the step.</b>	<b>Select the reception mode.</b>	<b>Exit the mode menu.</b>	<b>Exit the mode menu.</b>	<b>Exit the mode menu.</b>	<b>Exit the mode menu.</b>	<b>Exit the mode menu.</b>	<b>Exit the mode menu.</b>

# Playing tracks (PLAYER mode)

Preparation: Download (→above).



**HOLD switch**  
Switch on to prevent undesired responses when you accidentally press buttons. It prevents:  
• The unit turning on unexpectedly and wasting the battery.  
• Interruptions to play or recording.

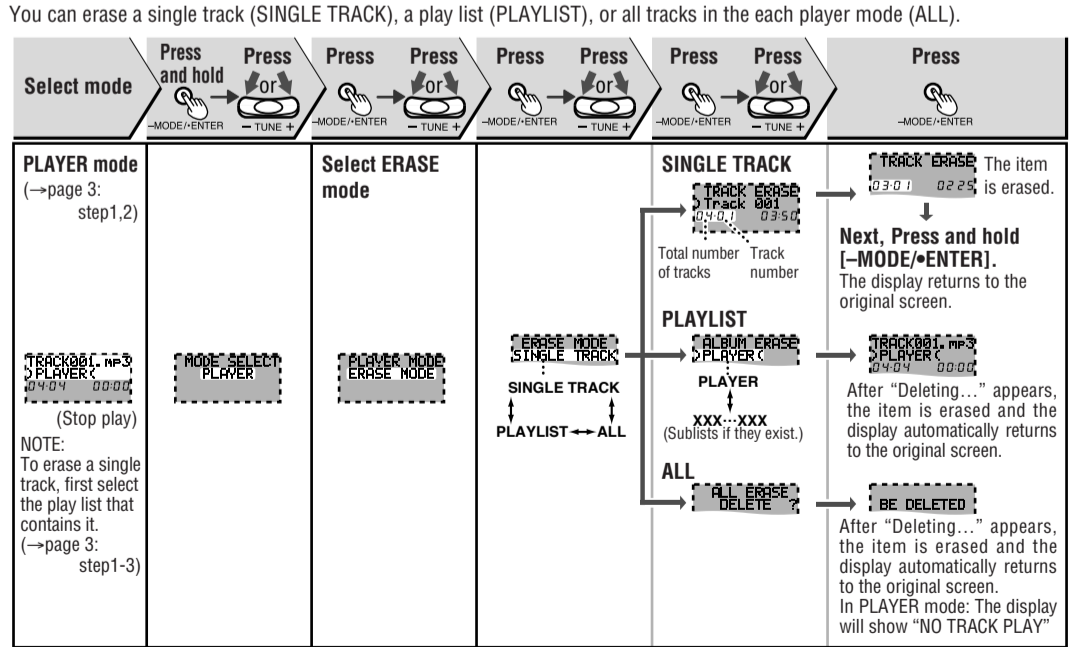


<b>A-B repeat</b> Play repeats between the two points.	Press [-MODE/ENTER] at the start point (A) and once more at the end point (B). Press [-MODE/ENTER] to cancel.	<b>Stop and off</b>	Press [TUNE+]. The unit turns off 10 seconds later. Resume: When you next press [TUNE+], play resumes from where you stopped it.
<b>Skip</b>	Press backward forward	<b>Search</b>	During play, press and hold backward forward

## Other PLAYER features

After step 2	Press and hold	Press	Press	Press	Press	Press	Press	Press	Press
<b>Changing the Sound quality</b> NORMAL: No change ROCK: Adds impact JAZZ: Adds club-like atmosphere CLASSIC: Adds concert hall-like atmosphere POP: Clarifies the treble range USER: Adjust BASS and TREBLE between -4 and +4	Press and hold	Press	Press	Press	Press	Press	Press	Press	Press
<b>Repeat and Random play</b> NORMAL: Normal play 1: 1 track repeat ∞: All tracks repeat in a list RAND: Play all tracks in a list randomly	Press and hold	Press	Press	Press	Press	Press	Press	Press	Press
<b>Track Information</b> Show title, artist and data information.	Press and hold	Press	Press	Press	Press	Press	Press	Press	Press
<b>Erasing the tracks and lists</b>	Press and hold	Press	Press	Press	Press	Press	Press	Press	Press

# Erasing tracks and play lists



You can also erase play lists and tracks on your computer when the player's folder is open. (→page 3)

- Microsoft, the Microsoft logo, the Windows, Windows logo, Windows NT and Windows Media are either trademarks or registered trademarks of Microsoft Corporation in the United States and other countries.
- WMA is a compression format developed by Microsoft Corporation. It achieves the same sound quality as MP3 with a file size that is smaller than that of MP3.
- MPEG Layer-3 audio decoding technology licensed from Fraunhofer IIS and Thomson multimedia.
- Other names of systems and products mentioned in these instructions are usually the registered trademarks or trademarks of the manufacturers who developed the system or product concerned.



## Free Manuals Download Website

<http://myh66.com>

<http://usermanuals.us>

<http://www.somanuals.com>

<http://www.4manuals.cc>

<http://www.manual-lib.com>

<http://www.404manual.com>

<http://www.luxmanual.com>

<http://aubethermostatmanual.com>

Golf course search by state

<http://golfingnear.com>

Email search by domain

<http://emailbydomain.com>

Auto manuals search

<http://auto.somanuals.com>

TV manuals search

<http://tv.somanuals.com>