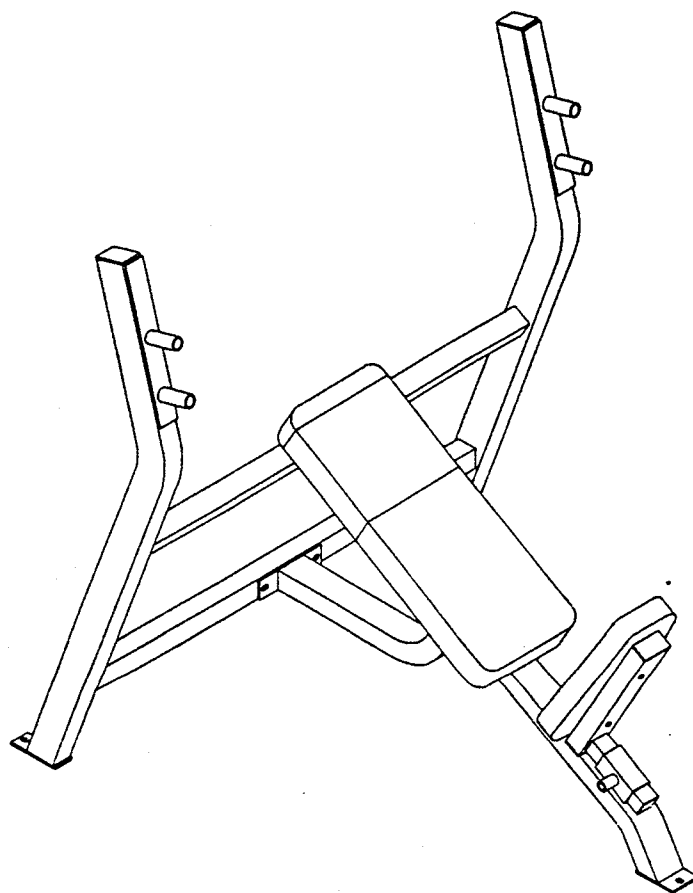


PARABODY

Serious Steel

**920101
INCLINE PRESS BENCH
ASSEMBLY INSTRUCTIONS**



ParaBody, Incorporated
14150 Sunfish Lake Boulevard
Ramsey, MN 55303
1-800-328-9714

Part # 6626501

1

Revision: 06/04/96

920101 INCLINE PRESS BENCH ASSEMBLY PARTS LIST

SORT AND COUNT ALL PARTS BEFORE BEGINNING ASSEMBLY

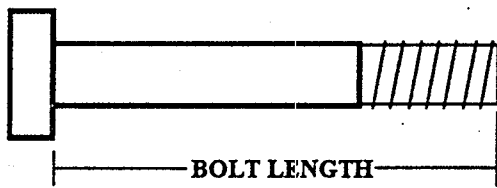
HARDWARE:

ITEM	NAME/DESCRIPTION	QTY
1.	1/2 X 3 IN BOLT	4
2.	3/8 X 2-3/4 IN BOLT	5
3.	1/2 IN WASHER	4
4.	3/8 IN WASHER	5
5.	1/2 IN LOCK NUT	4
6.	SPRING PIN	1
7.	3 X 2 IN END CAP	2
8.	1-3/4 IN SQ END CAP	1
9.	1-1/2 X 3/4 IN GLIDE (8 PER)	1

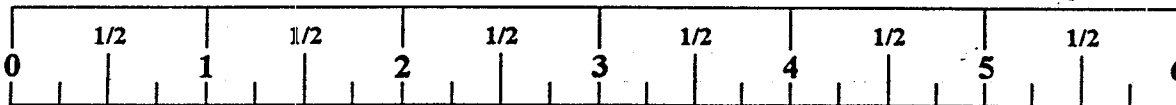
WELDMENTS/PARTS:

ITEM	NAME/DESCRIPTION	QTY
1.	UPRIGHT FRAME WELDMENT (6614403)	1
2.	BENCH FRAME WELDMENT (6614503)	1
3.	SEAT SUPPORT WELDMENT (6614602)	1
4.	SEAT PAD (66186XX)	1
5.	BACK PAD (66185XX)	1

NOTE: BOLT LENGTH IS MEASURED FROM THE UNDERSIDE OF THE HEAD OF THE BOLT.



BOLT LENGTH RULER:



THANK YOU

FOR PURCHASING THE 920101 INCLINE PRESS BENCH, PLEASE SAVE THESE ASSEMBLY INSTRUCTIONS FOR YOUR PERSONAL REFERENCE, AND ADDITIONAL SERVICE INFORMATION.

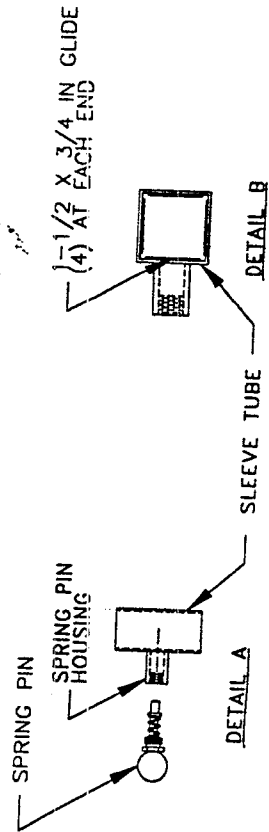
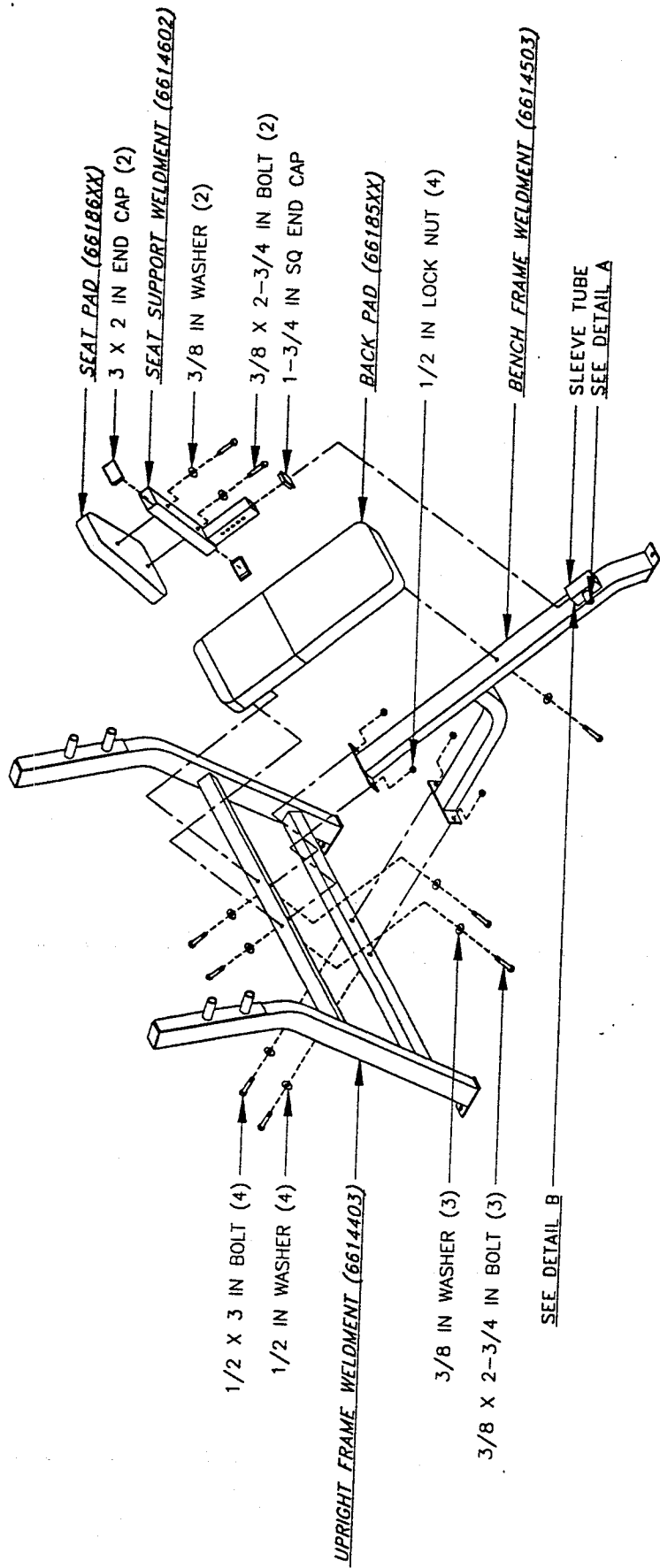
*****IMPORTANT*****

- **THE 920101 INCLINE PRESS BENCH MUST BE ASSEMBLED ON A FLAT, LEVEL SURFACE TO ASSURE ITS PROPER FUNCTION.**
- **PARABODY STRONGLY RECOMMENDS THAT THIS PRODUCT BE ASSEMBLED BY TWO PEOPLE TO AVOID POSSIBLE INJURY.**
- **IF YOU EXPERIENCE ANY PROBLEM WITH THE ASSEMBLY OF THIS PRODUCT, PLEASE CONTACT YOUR DEALER OR YOUR PARABODY CUSTOMER SERVICE REPRESENTATIVE AT: 1-800-328-9714**
- **TOOLS REQUIRED: RATCHET, 3/4 SOCKET and WRENCH, 9/16 SOCKET and WRENCH, and RUBBER Mallet or HAMMER.**

1. **SECURELY assemble the BENCH FRAME WELDMENT to the UPRIGHT FRAME WELDMENT as shown on drawing.**
2. **Attach eight (8) 1-1/2 X 3/4 IN GLIDES to the SLEEVE TUBE on the BENCH FRAME WELDMENT as shown in DETAIL B.**
3. **SECURELY assemble the SPRING PIN to the SPRING PIN HOUSING of the SLEEVE TUBE as shown in DETAIL A.**
4. **Insert two (2) 3 X 2 IN END CAPS, and one (1) 1-3/4 IN SQ END CAP into the ends of the SEAT SUPPORT WELDMENT as shown on drawing.**
5. **SECURELY assemble the SEAT PAD to the SEAT SUPPORT WELDMENT as shown on drawing.**
6. **Pull back the SPRING PIN on the SLEEVE TUBE of the BENCH FRAME WELDMENT and insert the SEAT SUPPORT WELDMENT. Release the SPRING PIN into the desired hole.**
7. **SECURELY assemble the BACK PAD to the UPRIGHT FRAME, and BENCH FRAME WELDMENTS as shown on drawing.**

DASH NO
01 AS SHOWN

REVISIONS			
REV	DESCRIPTION	CHG NO	APP'D



TOLERANCES (EXCEPT AS NOTED)		TITLE	
DECIMAL	FRACTIONAL	PARABODY, INC. RAMSEY, MINNESOTA	
		ASSY INST, 920101	
		SCALE 1/16	SIZE DRAWING NO.
		SHEET 1 OF 1	B
		DR MGN	5/86
		CHK'D MGN	5/86
		APP'D	66265

Free Manuals Download Website

<http://myh66.com>

<http://usermanuals.us>

<http://www.somanuals.com>

<http://www.4manuals.cc>

<http://www.manual-lib.com>

<http://www.404manual.com>

<http://www.luxmanual.com>

<http://aubethermostatmanual.com>

Golf course search by state

<http://golfingnear.com>

Email search by domain

<http://emailbydomain.com>

Auto manuals search

<http://auto.somanuals.com>

TV manuals search

<http://tv.somanuals.com>