

# **6211-I1 Router**

## **User's Guide**

**Document No. 6211-A2-GB21-30**

August 2005

---

**Copyright 2005 Paradyne Corporation.**  
**All rights reserved.**  
**Printed in U.S.A.**

## Notice

This publication is protected by federal copyright law. No part of this publication may be copied or distributed, transmitted, transcribed, stored in a retrieval system, or translated into any human or computer language in any form or by any means, electronic, mechanical, magnetic, manual or otherwise, or disclosed to third parties without the express written permission of Paradyne Corporation, 8545 126th Ave. N., Largo, FL 33773.

Paradyne Corporation makes no representation or warranties with respect to the contents hereof and specifically disclaims any implied warranties of merchantability or fitness for a particular purpose. Further, Paradyne Corporation reserves the right to revise this publication and to make changes from time to time in the contents hereof without obligation of Paradyne Corporation to notify any person of such revision or changes.

Changes and enhancements to the product and to the information herein will be documented and issued as a new release to this manual.

## Warranty, Sales, Service, and Training Information

Contact your local sales representative, service representative, or distributor directly for any help needed. For additional information concerning warranty, sales, service, repair, installation, documentation, training, distributor locations, or Paradyne worldwide office locations, use one of the following methods:

- **Internet:** Visit the Paradyne World Wide Web site at [www.paradyne.com](http://www.paradyne.com). (Be sure to register your warranty at [www.paradyne.com/warranty](http://www.paradyne.com/warranty).)
- **Telephone:** Call our automated system to receive current information by fax or to speak with a company representative.
  - Within the U.S.A., call 1-800-795-8004
  - Outside the U.S.A., call 1-727-530-2340

## Document Feedback

We welcome your comments and suggestions about this document. Please mail them to Technical Publications, Paradyne Corporation, 8545 126th Ave. N., Largo, FL 33773, or send e-mail to [userdoc@paradyne.com](mailto:userdoc@paradyne.com). Include the number and title of this document in your correspondence. Please include your name and phone number if you are willing to provide additional clarification.

## Trademarks

Acculink, ADSL/R, Bitstorm, Comsphere, DSL the Easy Way, ETC, Etherloop, FrameSaver, GranDSLAM, GrandVIEW, Hotwire, the Hotwire logo, iMarc, Jetstream, MVL, NextEDGE, Net to Net Technologies, OpenLane, Paradyne, the Paradyne logo, Paradyne Credit Corp., the Paradyne Credit Corp. logo, Performance Wizard, ReachDSL, StormPort, TruePut are registered trademarks of Paradyne Corporation.

Connect to Success, Hotwire Connected, JetFusion, JetVision, MicroBurst, PacketSurfer, Quick Channel, Reverse Gateway, Spectrum Manager, and StormTracker are trademarks of Paradyne Corporation.

All other products or services mentioned herein are the trademarks, service marks, registered trademarks, or registered service marks of their respective owners.

---

## Important Safety Instructions

1. Read and follow all warning notices and instructions marked on the product or included in the manual.
2. Slots and openings in the cabinet are provided for ventilation. To ensure reliable operation of the product and to protect it from overheating, these slots and openings must not be blocked or covered.
3. Do not allow anything to rest on the power cord and do not locate the product where persons will walk on the power cord.
4. Do not attempt to service this product yourself, as opening or removing covers may expose you to dangerous high voltage points or other risks. Refer all servicing to qualified service personnel.
5. General purpose cables are used with this product for connection to the network. Special cables, which may be required by the regulatory inspection authority for the installation site, are the responsibility of the customer. Use a UL Listed, CSA certified, minimum No. 24 AWG line cord for connection to the Digital Subscriber Line (DSL) network.
6. When installed in the final configuration, the product must comply with the applicable Safety Standards and regulatory requirements of the country in which it is installed. If necessary, consult with the appropriate regulatory agencies and inspection authorities to ensure compliance.
7. A rare phenomenon can create a voltage potential between the earth grounds of two or more buildings. If products installed in separate buildings are interconnected, the voltage potential may cause a hazardous condition. Consult a qualified electrical consultant to determine whether or not this phenomenon exists and, if necessary, implement corrective action prior to interconnecting the products.
8. Input power to this product must be provided by one of the following: (1) a UL Listed/CSA certified power source with a Class 2 or Limited Power Source (LPS) output for use in North America, or (2) a certified transformer, with a Safety Extra Low Voltage (SELV) output having a maximum of 240 VA available, for use in the country of installation.
9. In addition, since the equipment is to be used with telecommunications circuits, take the following precautions:
  - Never install telephone wiring during a lightning storm.
  - Never install telephone jacks in wet locations unless the jack is specifically designed for wet locations.
  - Never touch uninsulated telephone wires or terminals unless the telephone line has been disconnected at the network interface.
  - Use caution when installing or modifying telephone lines.
  - Avoid using a telephone (other than a cordless type) during an electrical storm. There may be a remote risk of electric shock from lightning.
  - Do not use the telephone to report a gas leak in the vicinity of the leak.

## CE Marking

When the product is marked with the CE mark on the equipment label, a supporting Declaration of Conformity may be downloaded from the Paradyne World Wide Web site at [www.paradyne.com](http://www.paradyne.com). Select *Library* → *Technical Manuals* → *CE Declarations of Conformity*.

## FCC Part 15 Declaration

An FCC Declaration of Conformity may be downloaded from the Paradyne World Wide Web site at [www.paradyne.com](http://www.paradyne.com). Select *Support* → *Technical Manuals* → *Declarations of Conformity*.

This device complies with Part 15 of the FCC Rules. Operation is subject to the following two conditions: (1) this device may not cause harmful interference, and (2) this device must accept any interference received, including interference that may cause undesired operation.

The authority to operate this equipment is conditioned by the requirement that no modifications will be made to the equipment unless the changes or modifications are expressly approved by the responsible party.

---

This equipment has been tested and found to comply with the limits for a Class B digital device, pursuant to Part 15 of the FCC Rules. These limits are designed to provide reasonable protection against harmful interference in a residential installation. This equipment generates, uses, and can radiate radio frequency energy and, if not installed and used in accordance with the instructions, may cause harmful interference to radio communications. However, there is no guarantee that interference will not occur in a particular installation. If this equipment does cause harmful interference to radio or television reception, which can be determined by turning the equipment off and on, the user is encouraged to try to correct the interference by one or more of the following measures:

- Reorient or relocate the receiving antenna.
- Increase the separation between the equipment and receiver.
- Connect the equipment into an outlet on a circuit different from that to which the receiver is connected.
- Consult the dealer or an experienced radio/TV technician for help.

### **Notice to Users of the United States Telephone Network**

The following notice applies to versions of the modem that have been FCC Part 68 approved.

This equipment complies with Part 68 of the FCC rules and the requirements adopted by the Administrative Council for Terminal Attachment (ACTA). On the bottom side of this equipment is a label that contains, among other information, a product identifier in the format US:AAAEQ##TXXXX. If requested, this number must be provided to the Telephone Company.

This equipment is intended to connect to the Public Switched Telephone Network through a Universal Service Order Code (USOC) type RJ11C jack. A plug and jack used to connect this equipment to the premises wiring and telephone network must comply with the applicable FCC Part 68 rules and requirements adopted by the ACTA. A compliant telephone cord and modular plug is provided with this product. It has been designed to be connected to a compatible modular jack that is also compliant.

The Ringer Equivalence Number (or REN) is used to determine the number of devices that may be connected to a telephone line. Excessive RENs on a telephone line may result in the devices not ringing in response to an incoming call. In most but not all areas, the sum of RENs should not exceed five (5.0). To be certain of the number of devices that may be connected to a line, as determined by the total RENs, contact the local Telephone Company. The REN for this product is part of the product identifier that has the format US:AAAEQ##TXXXX. The digits represented by ## are the REN without a decimal point. For example, 03 represents a REN of 0.3.

If the modem causes harm to the telephone network, the Telephone Company will notify you in advance that temporary discontinuance of service may be required. But if advance notice is not practical, the Telephone Company will notify the customer as soon as possible. Also, you will be advised of your right to file a complaint with the FCC if you believe it is necessary.

The Telephone Company may make changes in its facilities, equipment, operations or procedures that could affect the operation of the equipment. If this happens, the Telephone Company will provide advance notice in order for you to make necessary modifications to maintain uninterrupted service. If trouble is experienced with the modem, refer to the repair and warranty information in this document.

If the equipment is causing harm to the telephone network, the Telephone Company may request that you disconnect the equipment until the problem is resolved.

The user may make no repairs to the equipment.

Connection to party line service is subject to state tariffs. Contact the state public utility commission, public service commission or corporation commission for information.

If the site has specially wired alarm equipment connected to the telephone line, ensure the installation of the modem does not disable the alarm equipment. If you have questions about what will disable alarm equipment, consult your Telephone Company or a qualified installer.

---

## Notice to Users of the Canadian Telephone Network

NOTICE: This equipment meets the applicable Industry Canada Terminal Equipment Technical Specifications. This is confirmed by the registration number. The abbreviation IC before the registration number signifies that registration was performed based on a Declaration of Conformity indicating that Industry Canada technical specifications were met. It does not imply that Industry Canada approved the equipment.

NOTICE: The Ringer Equivalence Number (REN) for this terminal equipment is labeled on the equipment. The REN assigned to each terminal equipment provides an indication of the maximum number of terminals allowed to be connected to a telephone interface. The termination on an interface may consist of any combination of devices subject only to the requirement that the sum of the Ringer Equivalence Numbers of all the devices does not exceed five.

If your equipment is in need of repair, contact your local sales representative, service representative, or distributor directly.

### CANADA - EMI NOTICE:

This Class B digital apparatus meets all requirements of the Canadian interference-causing equipment regulations.

Cet appareil numérique de la classe B respecte toutes les exigences du règlement sur le matériel brouilleur du Canada.

### Japan Notices

この装置は、情報処理装置等電波障害自主規制協議会（VCCI）の基準に基づくクラス B 情報技術装置です。この装置は、家庭環境で使用することを目的としていますが、この装置がラジオやテレビジョン受信機に近接して使用されると、受信障害を引き起こすことがあります。  
取扱説明書に従って正しい取り扱いをして下さい。

This is a Class B product based on the standard of the Voluntary Control Council for Interference from Information Technology Equipment (VCCI). If this is used near a radio or television receiver in a domestic environment, it may cause radio interference. Install and use the equipment according to the instruction manual.



---

# Contents

---

## About This Guide

- Document Purpose and Intended Audience ..... v
- Document Summary ..... v
- Product-Related Documents ..... vi

## 1 Introduction

- Introduction ..... 1-1
- Features ..... 1-1
- System Requirements ..... 1-1
- Parts List ..... 1-2
- Front Panel ..... 1-3
- Rear Panel ..... 1-4

## 2 Hardware Installation and PC Setup

- Overview ..... 2-1
- Connecting the Hardware ..... 2-1
- Installing the USB Driver ..... 2-4
- Configuring Your Computer ..... 2-7
  - Windows XP PCs ..... 2-7
  - Windows 2000 PCs ..... 2-9
  - Windows ME PCs ..... 2-9
  - Windows 95 and Windows 98 PCs ..... 2-10
  - Windows NT 4.0 ..... 2-11
- Logging in to Your Router ..... 2-12

## 3 Device Information

- Status Summary ..... 3-1
- WAN ..... 3-2
- LAN Statistics ..... 3-3
- WAN Statistics ..... 3-4
- ATM Statistics ..... 3-5
- ADSL Statistics ..... 3-6
- ADSL BER Test ..... 3-7

- Route ..... 3-8
- ARP ..... 3-9

## 4 Quick Setup

- Quick Setup with Auto-Connect Enabled ..... 4-1
- Quick Setup with Auto-Connect Disabled ..... 4-3

## 5 Advanced Setup

- WAN ..... 5-1
  - Add Function – ATM PVC Configuration ..... 5-2
  - Connection Type Screen ..... 5-3
  - Bridge Service and Quality of Service Screen ..... 5-4
  - WAN Setup - Summary ..... 5-5
  - Remove Function ..... 5-6
  - Finish Function ..... 5-6
- Local Area Network (LAN) Setup ..... 5-7
- NAT ..... 5-8
  - Virtual Servers ..... 5-8
- Port Triggering ..... 5-10
- DMZ Host ..... 5-12
- Firewall ..... 5-13
  - IP Filtering – Outgoing ..... 5-13
  - IP Filtering – Incoming ..... 5-15
  - Firewall – MAC Filtering ..... 5-17
  - Parental Control ..... 5-19
- Quality of Service ..... 5-20
- Routing – Default Gateway ..... 5-22
- Routing – Static Route ..... 5-23
- Routing – RIP ..... 5-24
- DNS Server ..... 5-24
- Dynamic DNS ..... 5-25
- ADSL ..... 5-26
  - Modulation Methods ..... 5-26
  - Phone Line Pair ..... 5-27
  - Capability ..... 5-27
- DSL Advanced Settings ..... 5-28
- Tone Selection ..... 5-29
- Port Mapping ..... 5-30



## 6 Diagnostics

- Testing the DSL Connection ..... 6-1

## 7 Management

- Saving and Restoring the Configuration ..... 7-1
- Backing Up Configuration Settings ..... 7-1
- Restoring Configuration Settings ..... 7-3
- Restoring Default Settings ..... 7-5
- System Log ..... 7-7
  - View System Log ..... 7-8
  - Configure System Log ..... 7-9
- SNMP ..... 7-10
- Internet Time ..... 7-11
- Access Control – Services ..... 7-12
- Access Control – IP Addresses ..... 7-13
- Access Control – Passwords ..... 7-15
- Update Software ..... 7-15
- Reboot Router ..... 7-16

## A Specifications

### Index



---

# About This Guide

---

## Document Purpose and Intended Audience

This guide contains detailed information about the 6211-I1 router. It is intended for all users of the router.

## Document Summary

Section	Description
<a href="#">Chapter 1, Introduction</a>	Describes the features of the router.
<a href="#">Chapter 2, Hardware Installation and PC Setup</a>	Shows how to connect the router and set up your PC to manage the router.
<a href="#">Chapter 3, Device Information</a>	Explains how to use the web interface to obtain statistics and other information about the router.
<a href="#">Chapter 4, Quick Setup</a>	Describes the Quick Setup configuration process.
<a href="#">Chapter 5, Advanced Setup</a>	Describes configuration of the advanced router features.
<a href="#">Chapter 6, Diagnostics</a>	Describes the test screen.
<a href="#">Chapter 7, Management</a>	Describes the management functions of the router, including backing up and restoring configuration settings, viewing the system log, configuring access control, and upgrading software.
<a href="#">Appendix A, Specifications</a>	Lists the specifications of the router.
<a href="#">Index</a>	Lists key terms, concepts, and sections in alphabetical order.

A master glossary of terms and acronyms used in Paradyne documents is available online at [www.paradyne.com](http://www.paradyne.com). Select *Support* → *Technical Manuals* → *Technical Glossary*.

## Product-Related Documents

Complete documentation for Paradyne products is available online at **www.paradyne.com**. Select *Support* → *Technical Manuals*.

To order a paper copy of a Paradyne document, or to speak with a sales representative, please call 1-727-530-2000.

---

# Introduction

# 1

---

## Introduction

Congratulations on becoming the owner of a 6211 ADSL router.

This User's Guide will show you how to set up the router, and how to customize its configuration to get the most out of this product.

## Features

The 6211 router has the following features:

- Built-in ADSL modem which offers G.Dmt, G.lite, T1.413, ADSL2, Annex L, and ADSL2+ to meet different linking speeds from your ISP.
- 10/100BaseT Ethernet port to provide Internet connectivity to all computers on your LAN via additional Ethernet Switch/HUB.
- USB port allows quick installation.
- Built-in splitter provides you to connect telephone directly without using extra splitter (Model 6211-I1-x0x).
- Configuration program accessible via a web browser, such as Microsoft Internet Explorer.

## System Requirements

In order to use the 6211 ADSL router for Internet access, you must have the following:

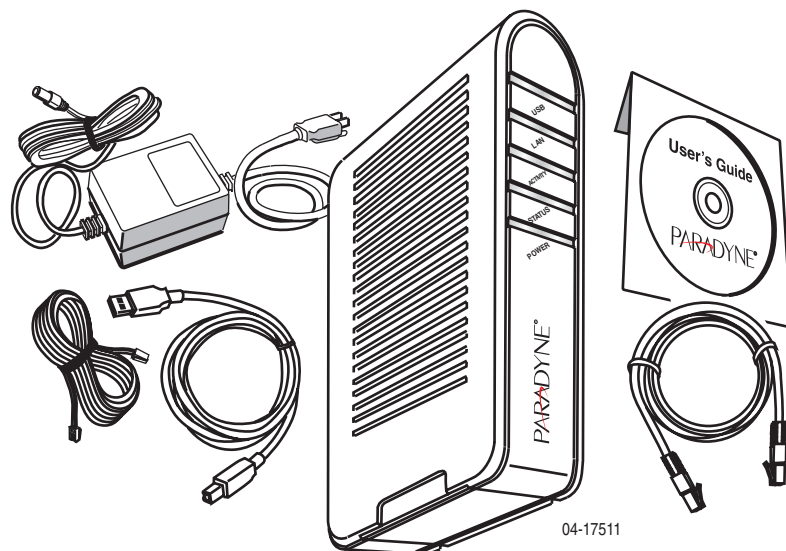
- ADSL service subscription from your ISP
- A PC with:
  - An Ethernet 10/100BaseT network interface card or USB port
  - A processor equivalent to or faster than a Pentium II 133 MHz
  - 32 MB RAM or greater
  - If USB drivers will be installed, 5 MB free disk space

- Windows 95b, 98, 98SE, 2000, ME, NT, or XP (Note: Windows 95 requires the installation of the Winsock program, not included. Windows 95 and 98 do not support USB.)
- (Optional) An Ethernet hub or switch, if you wish to connect the router to several computers on an Ethernet network.
- For system configuration using the supplied web-based program: a web browser such as Internet Explorer Version 6.0 or later. Netscape is not supported.

## Parts List

In addition to this document, your 6211 ADSL router should come with the following:

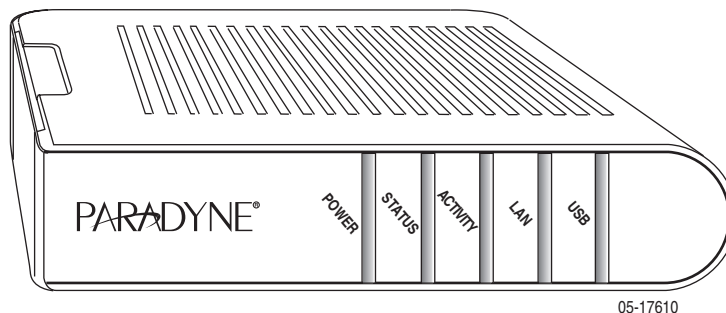
- 6211 ADSL router
- Power adapter
- Ethernet cable (RJ45, straight-through type)
- Phone cable (RJ11)
- USB cable



**Figure 1-1. 6211 ADSL Router Package Contents**

## Front Panel

The front panel contains LED indicators that show the status of the unit.



**Figure 1-2. Front Panel LEDs**

**Table 1-1. Front Panel Label and LEDs**

Label	Color	Function
POWER	Green	On: Unit is powered on
		Off: Unit is powered off
STATUS	Green	On: ADSL link is established and active
		Flashing: Trying to create an ADSL connection
		Off: No ADSL link
ACTIVITY	Green	Flashing: ADSL data transfer
LAN	Green	On: LAN link is established
		Flashing: Data transfer at LAN connection
		Off: No LAN link
USB	Green	On: USB link is established
		Off: No USB link

## Rear Panel

The rear panel contains the ports for the router's data and power connections.

**Table 1-2. Rear Panel Labels and Connectors**

<b>Label</b>	<b>Function</b>
LINE	Connects to your ADSL line
PHONE (Model 6211-I1-x0x)	Connects to your telephone
USB	USB outlet, for PC USB port connection
LAN	Connects the CPE to your PC's Ethernet port, or to the uplink port on your LAN's hub or switch, using the cable provided
RESET/DEFAULT	To reset the router to its default settings
POWER	Connects to the supplied power adapter



---

# Hardware Installation and PC Setup

# 2

---

## Overview

This chapter provides basic instructions for connecting the router to a computer or a LAN and to the Internet using DSL. The first part provides instructions to set up the hardware, and the second part describes how to prepare your PC for use with the router.

It is assumed that you have already subscribed to DSL service with your Internet service provider (ISP).

## Connecting the Hardware

### Caution

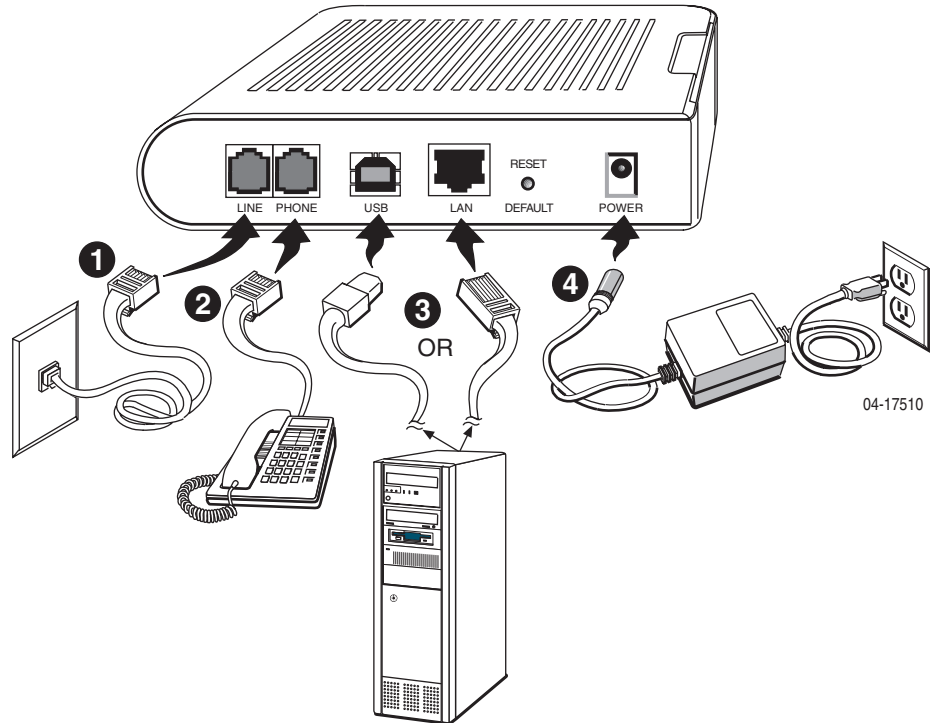
**Shut down your PC and any other equipment before connecting it to the router.**

To connect your router:

### ► Procedure

1. Connect your ADSL line to the port labeled LINE on the rear panel of the device.
2. For routers with a phone port (model numbers of the form 6211-I1-x0x), optionally connect your telephone to the port labeled PHONE.
3. Connect your PC or a LAN:
  - Use the supplied Ethernet cable to connect your PC directly to the router. Connect one end of the Ethernet cable to the port labeled LAN on the router and connect the other end to the Ethernet port of your computer.
  - Alternatively, use the supplied USB cable to connect your PC directly to the router. Connect one end of the USB cable to the port labeled USB on the router and connect the other end to a free USB port on your PC. Install the USB drivers as described in the user's guide on the CD.

- If your LAN has more than one computer, you can attach one end of an Ethernet cable to a hub or a switch and the other to the LAN port of the router. Either a crossover or straight-through Ethernet cable can be used.
4. Connect the AC power adapter to the POWER connector on the back of the device and plug the adapter into a wall outlet or power strip.



**Figure 2-1. Hardware Installation**

5. Turn on and boot up your PC and any LAN devices, such as hub or switches, and any computers connected to them.
6. Verify that the router's LEDs are illuminated as shown in Table 3 1.

**Table 2-1. LED Indicators**

<b>This LED . . .</b>	<b>Should be:</b>
POWER	Solid green to indicate that the device is turned on. If this light is not on, check if the power adapter is attached to the router and plugged into an AC power source.
STATUS	Solid green to indicate that the router can communicate with your ISP via ADSL, or flashing when the router is trying to connect to your ISP.
ACTIVITY	Flashing when the device is sending or receiving data over the ADSL connection.
LAN	Solid green to indicate that the device can communicate with your PC via Ethernet, or flashing when the router is sending or receiving data over Ethernet.
USB	Solid green when connected, flashing when the router is sending or receiving data.

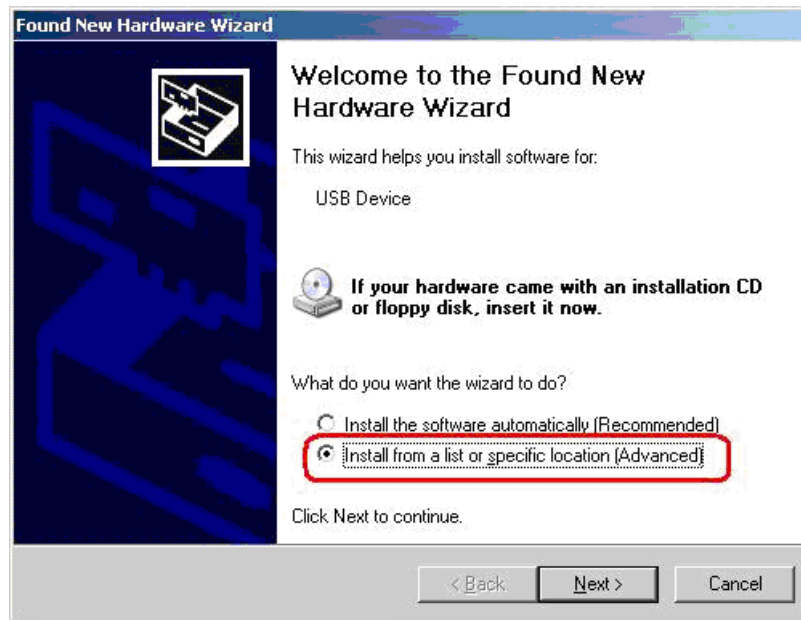
If the LEDs are illuminated as expected, the router is working properly.

## Installing the USB Driver

The following section applies only if you use the USB connector on the router. If you connect the USB cable between your PC and the router, Windows detects the new hardware and the Found New Hardware Wizard appears on your PC monitor. Follow this procedure:

### ► Procedure

1. Choose "Install from a list or specific location" from the Wizard's menu, then click on Next.



**Figure 2-2. Found New Hardware Wizard**

2. Insert the supplied CD ROM and use Browse to include the CD drive in the search.

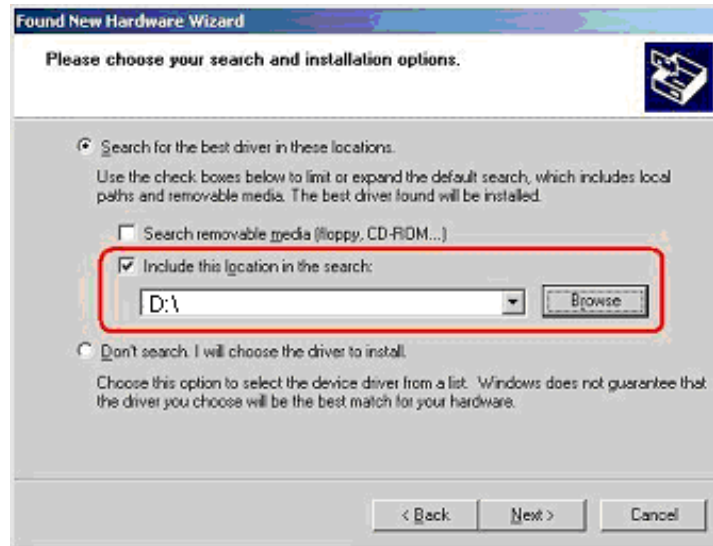


Figure 2-3. Search and Installation Options

3. If the Wizard reports a compatibility issue, select "Continue Anyway". Installation of the USB driver proceeds.

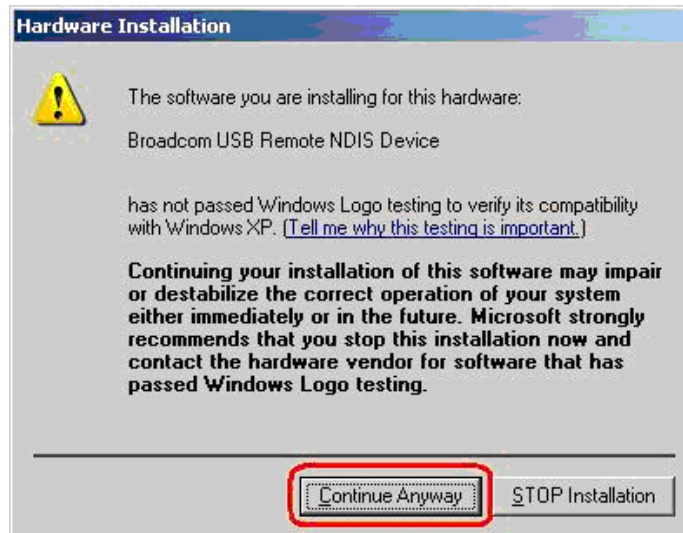
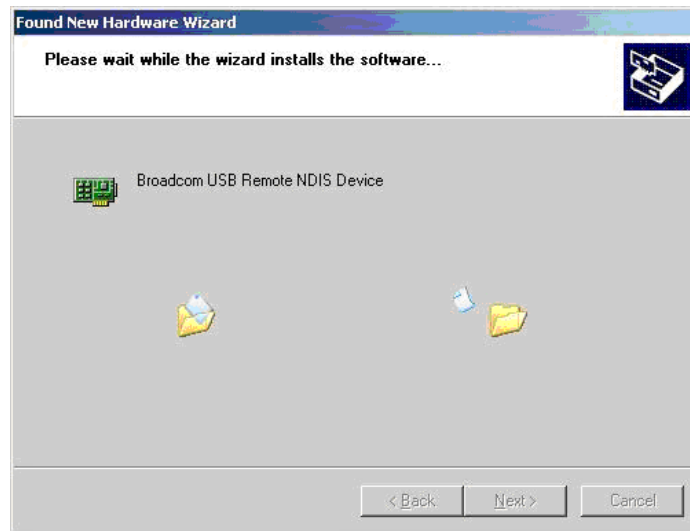


Figure 2-4. Compatibility Warning



**Figure 2-5. Progress Screen**

4. When prompted, click on Finish to close the Wizard.



**Figure 2-6. Completion Screen**

## Configuring Your Computer

Before you can access the router over the LAN or the USB port, you have to configure your PC's TCP/IP address to be 192.168.1.x (where x is any number between 3 and 254), with a subnet mask of 255.255.255.0. Your router's default IP address is 192.168.1.1.

### Windows XP PCs

1. In the Windows task bar, click on the Start button, and then click on Control Panel.
2. Double-click on the Network Connections icon.
3. In the LAN or High-Speed Internet window, right-click on the icon corresponding to your network interface card (NIC) or USB connection, and select Properties. (Often this icon is labeled Local Area Connection). The Local Area Connection dialog box displays with a list of currently installed network items.
4. Ensure that the check box to the left of the item labeled Internet Protocol (TCP/IP) is checked, and click on Properties.

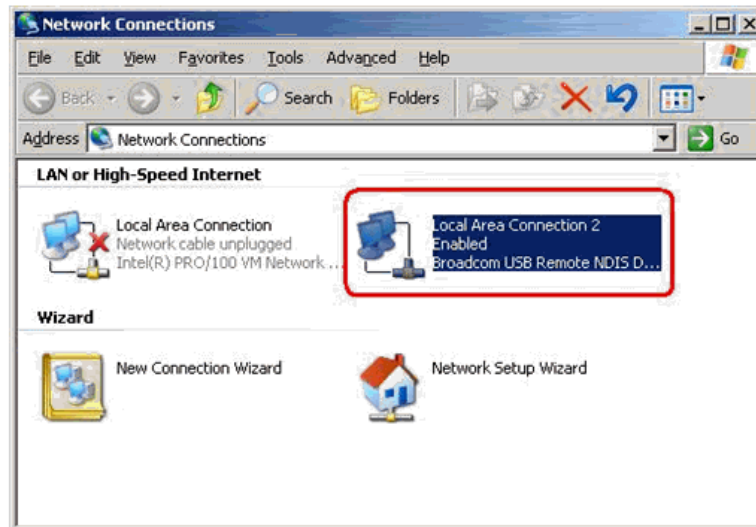


Figure 2-7. Network Connections (Windows XP)

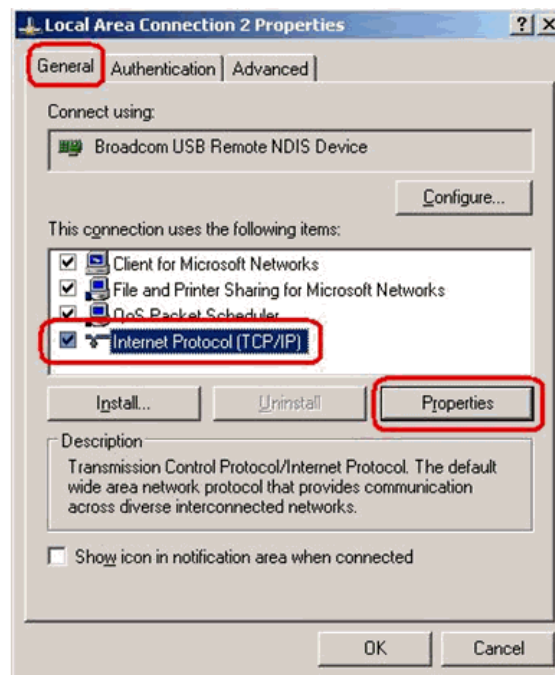


Figure 2-8. Local Area Connection Properties (Windows XP)

5. In the Internet Protocol (TCP/IP) Properties dialog box, click on the radio button labeled Use the following IP address. Type an address between 192.168.1.3 and 192.168.1.254 in the IP Address field (192.168.1.20 is shown here as an example) and 255.255.255.0 in the Subnet Mask field.

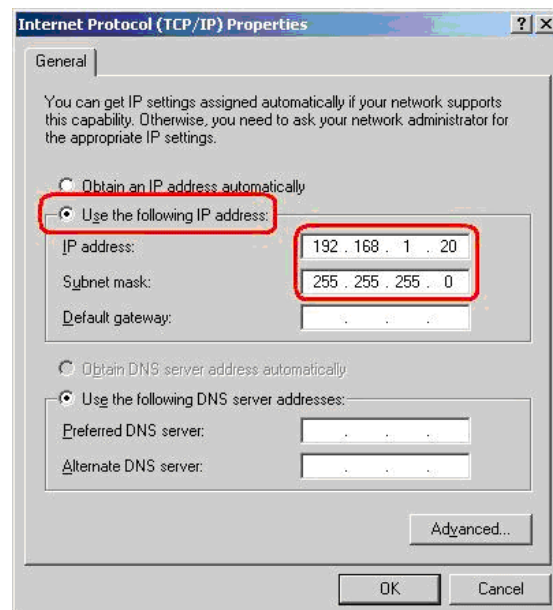


Figure 2-9. TCP/IP Properties (Windows XP)

6. Click on OK twice to confirm your changes, and close the Control Panel.



## Windows 2000 PCs

1. In the Windows task bar, click on the Start button, point to Settings, and then click on Control Panel.
2. Double-click on the Network and Dial-up Connections icon.
3. In the Network and Dial-up Connections window, right-click on the Local Area Connection icon, and then select Properties.

The Local Area Connection Properties dialog box display a list of currently installed network components. If the list includes Internet Protocol (TCP/IP), the protocol has already been enabled; skip to [Step 10](#).

4. If Internet Protocol (TCP/IP) does not appear as an installed component, click on Install.
5. In the Select Network Component Type dialog box, select Protocol, and then click on Add.
6. Select Internet Protocol (TCP/IP) in the Network Protocols list, and then click on OK.

You may be prompted to install files from your Windows 2000 installation CD or other medium. Follow the instructions to install the files.

7. If prompted, click on OK to restart your computer with the new settings.
8. After restarting your PC, double-click on the Network and Dial-up Connections icon in the Control Panel.
9. In Network and Dial-up Connections window, right-click on the Local Area Connection icon, and then select Properties.
10. In the Local Area Connection Properties dialog box, select Internet Protocol (TCP/IP), and then click on Properties.
11. In the Internet Protocol (TCP/IP) Properties dialog box, click on the radio button labeled Use the following IP address. Type an address between 192.168.1.3 and 192.168.1.254 in the IP Address field and 255.255.255.0 in the Subnet Mask field.
12. Click on OK twice to confirm and save your changes, and then close the Control Panel.

## Windows ME PCs

1. In the Windows task bar, click on the Start button, point to Settings, and then click on Control Panel.
2. Double-click on the Network and Dial-up Connections icon.
3. In the Network and Dial-up Connections window, right-click on the Network icon, and then select Properties.

The Network Properties dialog box displays a list of currently installed network components. If the list includes Internet Protocol (TCP/IP), the protocol has already been enabled; skip to [Step 11](#).

4. If Internet Protocol (TCP/IP) does not appear as an installed component, click on Add.
5. In the Select Network Component Type dialog box, select Protocol, and then click on Add.
6. Select Microsoft in the Manufacturers box.
7. Select Internet Protocol (TCP/IP) in the Network Protocols list, and then click on OK.

You may be prompted to install files from your Windows Me installation CD or other media. Follow the instructions to install the files.

8. If prompted, click on OK to restart your computer with the new settings.
9. After restarting your PC, double-click on the Network and Dial-up Connections icon in the Control Panel.
10. In Network and Dial-up Connections window, right-click on the Network icon, and then select Properties.
11. In the Network Properties dialog box, select TCP/IP, and then click on Properties.
12. In the TCP/IP Settings dialog box, click on the radio button labeled Use the following IP address. Type an address between 192.168.1.3 and 192.168.1.254 in the IP Address field and 255.255.255.0 in the Subnet Mask field.
13. Click on OK twice to confirm and save your changes, and then close the Control Panel.

## Windows 95 and Windows 98 PCs

1. In the Windows task bar, click on the Start button, point to Settings, and then click on Control Panel.
2. Double-click on the Network icon.  
  
The Network dialog box displays a list of currently installed network components. If the list includes TCP/IP, the protocol has already been enabled. Skip to step 9.
3. If TCP/IP does not appear as an installed component, click on Add. The Select Network Component Type dialog box appears.

4. Select Protocol, and then click on Add.

The Select Network Protocol dialog box appears.

5. Click on Microsoft in the Manufacturers list box, and then click on TCP/IP in the Network Protocols list box.
6. Click on OK to return to the Network dialog box, and then click on OK again.

You may be prompted to install files from your Windows 95/98 installation CD. Follow the instructions to install the files.

7. Click on OK to restart the PC and complete the TCP/IP installation.

8. After restarting your PC, open the Control Panel window, and then click on the Network icon.
9. Select the network component labeled TCP/IP, and then click on Properties.  
If you have multiple TCP/IP listings, select the listing associated with your network card or adapter.
10. In the TCP/IP Properties dialog box, click on the IP Address tab.
11. Click in the radio button labeled Use the following IP address. Type an address between 192.168.1.3 and 192.168.1.254 in the IP Address field and 255.255.255.0 in the Subnet Mask field.
12. Click on OK twice to confirm and save your changes. You will be prompted to restart Windows. Click on Yes.

## Windows NT 4.0

1. In the Windows NT task bar, click on the Start button, point to Settings, and then click on Control Panel.
2. In the Control Panel window, double click on the Network icon.
3. In the Network dialog box, click on the Protocols tab.  
The Protocols tab displays a list of currently installed network protocols. If the list includes TCP/IP, the protocol has already been enabled. Skip to [Step 9](#).
4. If TCP/IP does not appear as an installed component, click on Add.
5. In the Select Network Protocol dialog box, select TCP/IP, and then click on OK.  
You may be prompted to install files from your Windows NT installation CD or other medium. Follow the instructions to install the files.  
After all files are installed, a window appears to inform you that a TCP/IP service called DHCP can be set up to dynamically assign IP information.
6. Click on Yes to continue, and then click on OK, if prompted, to restart your computer.
7. After restarting your PC, open the Control Panel window, and then double-click on the Network icon.
8. In the Network dialog box, click on the Protocols tab.
9. In the Protocols tab, select TCP/IP, and then click on Properties.
10. In the Microsoft TCP/IP Properties dialog box, click on the radio button labeled Use the following IP address. Type an address between 192.168.1.3 and 192.168.1.254 in the IP Address field and 255.255.255.0 in the Subnet Mask field.
11. Click on OK twice to confirm and save your changes, and then close the Control Panel.

## Logging in to Your Router

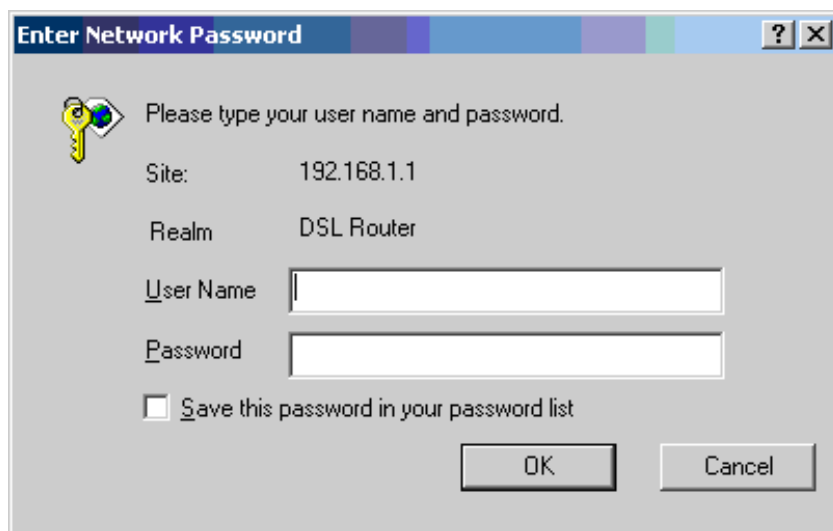
This section shows how to connect to the router's web interface, configure settings, and observe some statistics of your Internet connection.

1. Open your Web browser, and type the following URL in the address/location box, and press Enter:

http://192.168.1.1

This is the default IP address for the LAN port on the router.

A login screen appears.



**Figure 2-10. Login Screen**

If you have problem connecting to the router, verify that your PC is properly configured within the subnet of the router's default IP address 192.168.1.1. Setup is described in [Configuring Your Computer](#) on page 2-7.

2. Enter your user name and password, and then click on OK to display the home page of the router's web interface. There are two default user name and password combinations:

**Table 2-2. Default User Names and Passwords**

User Name	Password	Capability
user	user	Can display device status, but cannot change or save configuration options.
admin	admin	Can perform all functions.

You can change the passwords at any time.

The home page is shown in [Figure 2-11](#).

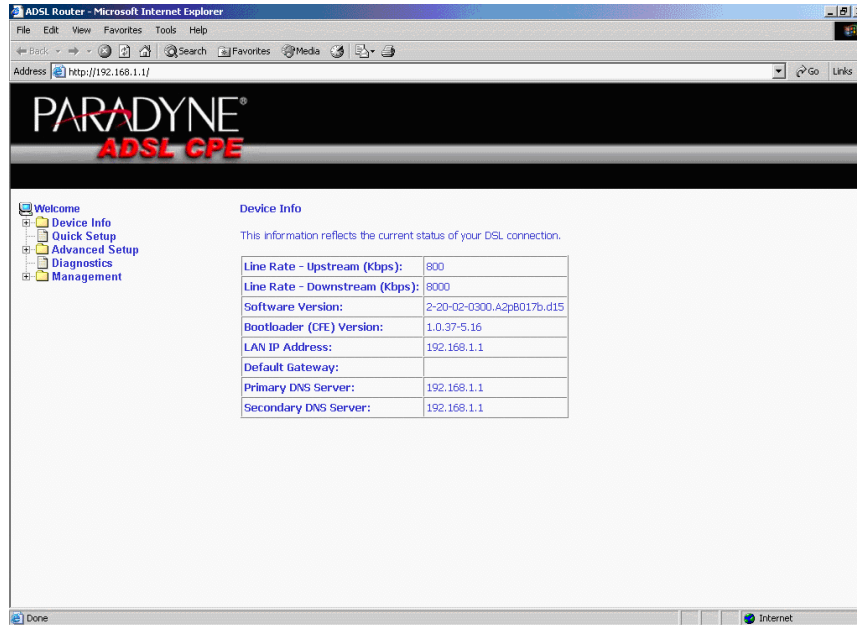


Figure 2-11. Web Interface Home Page



---

# Device Information

# 3

---

## Status Summary

Display the general status report for the router by clicking on Summary under Device Info (Figure 3-1).

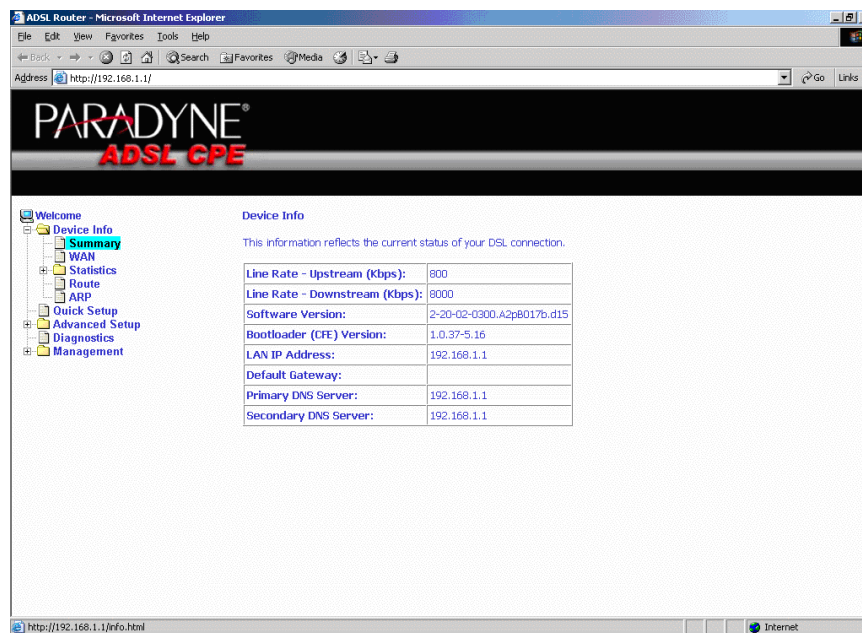
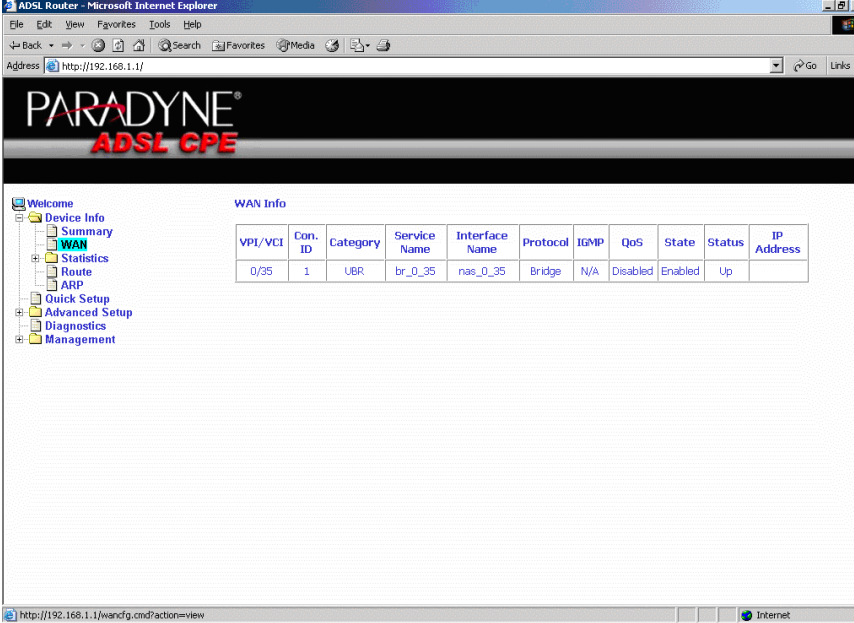


Figure 3-1. Status Summary

## WAN

Display the WAN status report from the by clicking on WAN under Device Info (Figure 3-2).



The screenshot shows a web browser window titled "ADSL Router - Microsoft Internet Explorer" with the address bar displaying "http://192.168.1.1/". The page header features the "PARADYNE ADSL CPE" logo. A navigation menu on the left includes "Welcome", "Device Info", "Summary", "WAN", "Statistics", "Route", "ARP", "Quick Setup", "Advanced Setup", "Diagnostics", and "Management". The "WAN Info" section displays a table with the following data:

VPI/VCI	Con. ID	Category	Service Name	Interface Name	Protocol	IGMP	QoS	State	Status	IP Address
0/35	1	UBR	br_0_35	nas_0_35	Bridge	N/A	Disabled	Enabled	Up	

**Figure 3-2. WAN Status**



## LAN Statistics

Display LAN statistics by clicking on LAN under Statistics (Figure 3-3).

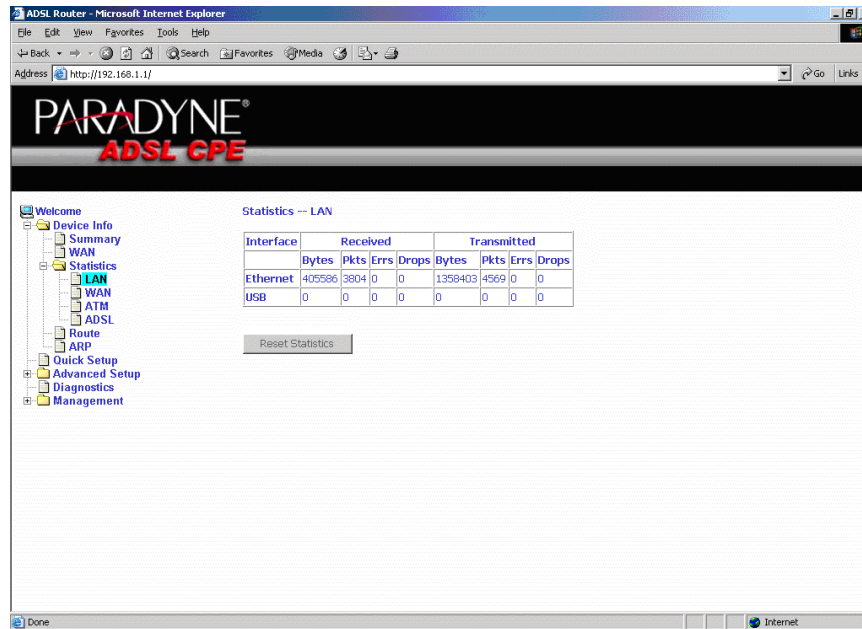


Figure 3-3. LAN Statistics

## WAN Statistics

Display WAN statistics by clicking on WAN under Statistics (Figure 3-4).

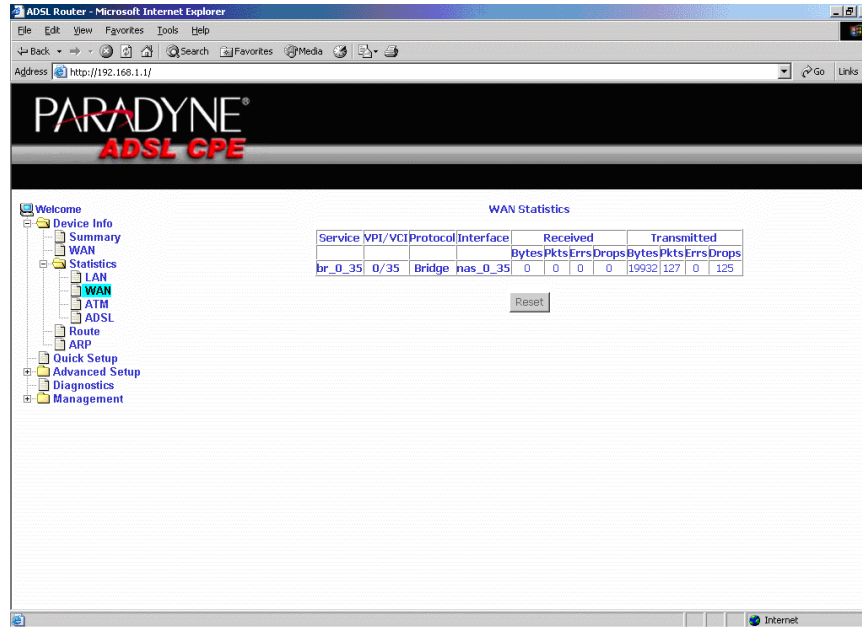


Figure 3-4. WAN Statistics

## ATM Statistics

Display ATM statistics by clicking on ATM under Statistics (Figure 3-5).

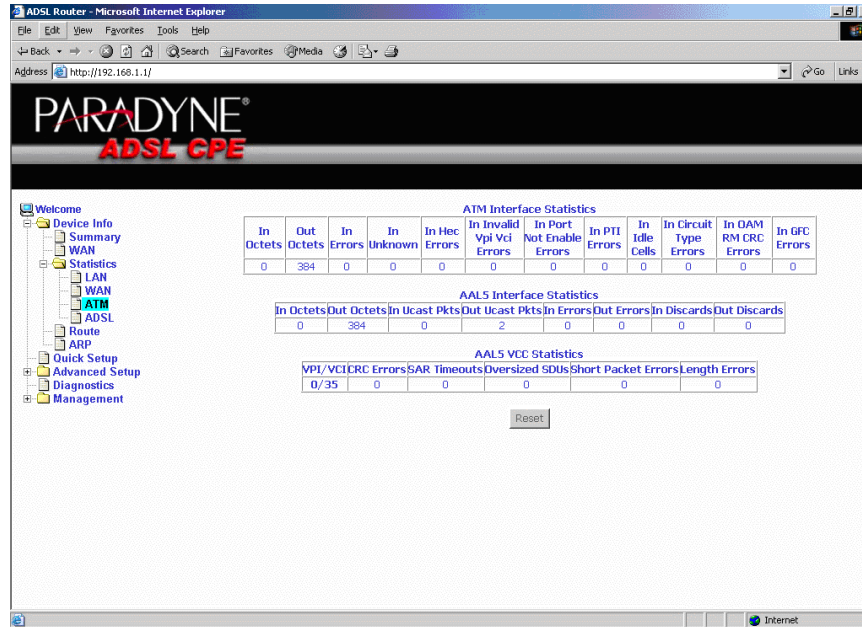


Figure 3-5. ATM Statistics

## ADSL Statistics

Display ADSL statistics by clicking on ADSL under Statistics (Figure 3-6).

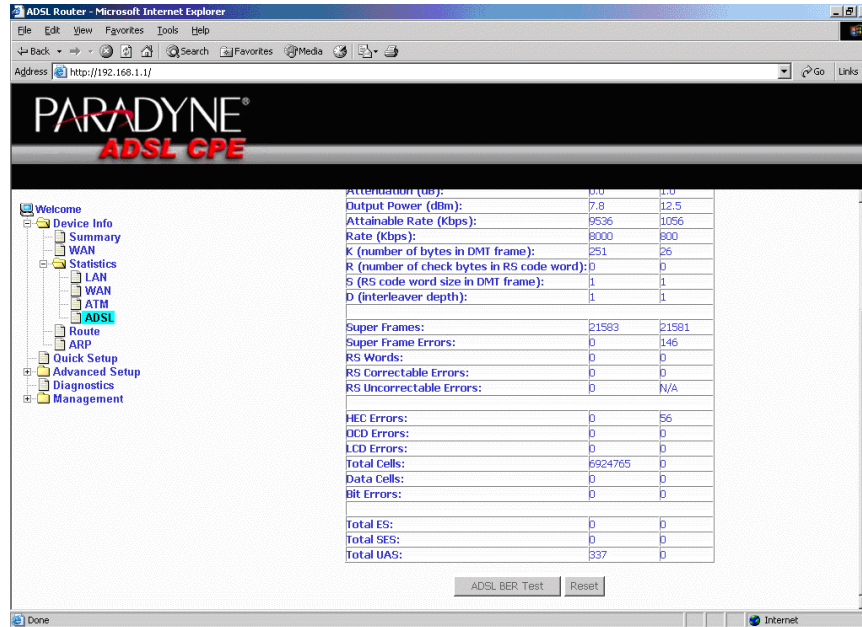


Figure 3-6. ADSL Status

## ADSL BER Test

The ADSL Bit Error Rate (BER) test determines the quality of the ADSL connection. The test is performed by transferring idle cells containing a known pattern and comparing the received data with this known pattern to check for any errors (Figure 3-7 and Figure 3-8).

### ► Procedure

To run a BER test:

1. Click on the ADSL BER Test button.
2. Select the test duration and click on Start
3. Check the result.

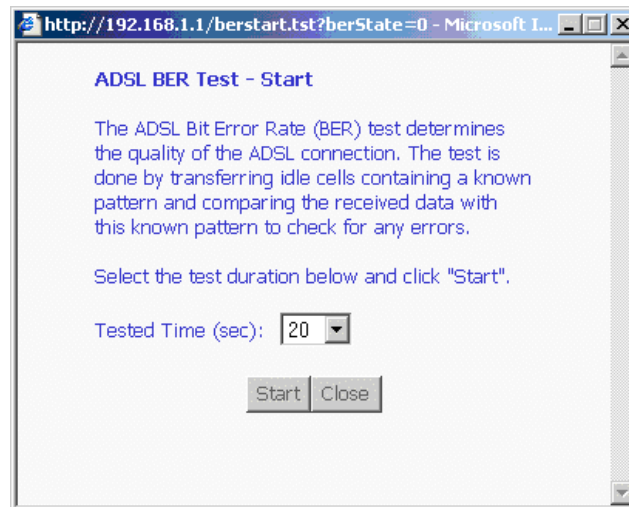


Figure 3-7. ADSL BER Test — Start

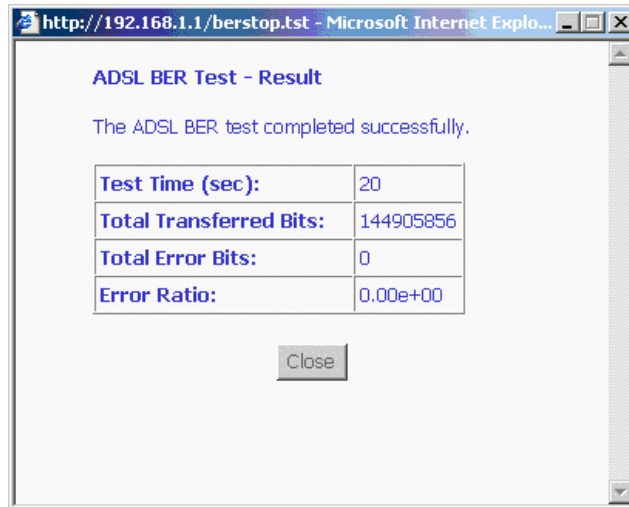


Figure 3-8. ADSL BER Test — Result

## Route

Obtain the Routing status report by clicking on the Route item under Device Info (Figure 3-9)

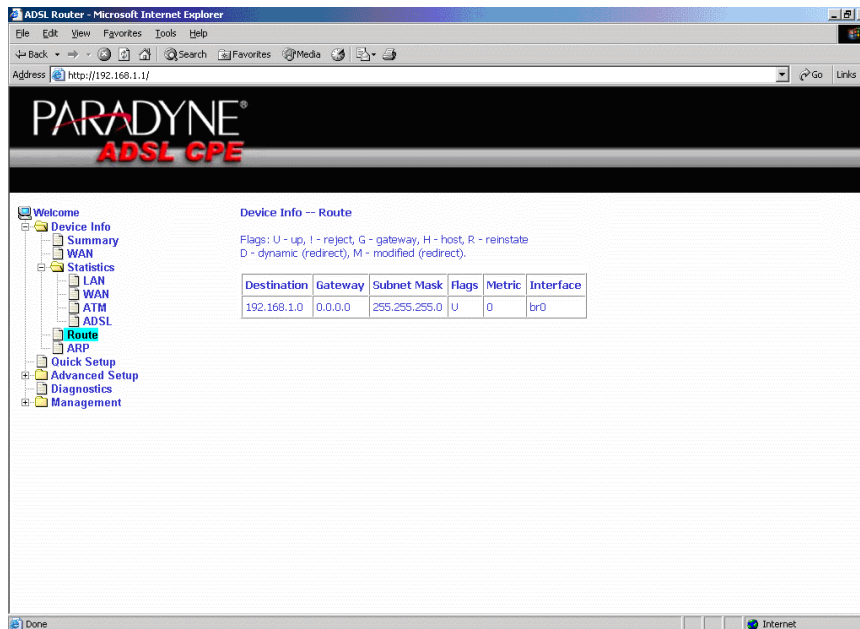


Figure 3-9. Route Information

# ARP

Display the ARP status report by clicking on ARP under Device Info (Figure 3-10)

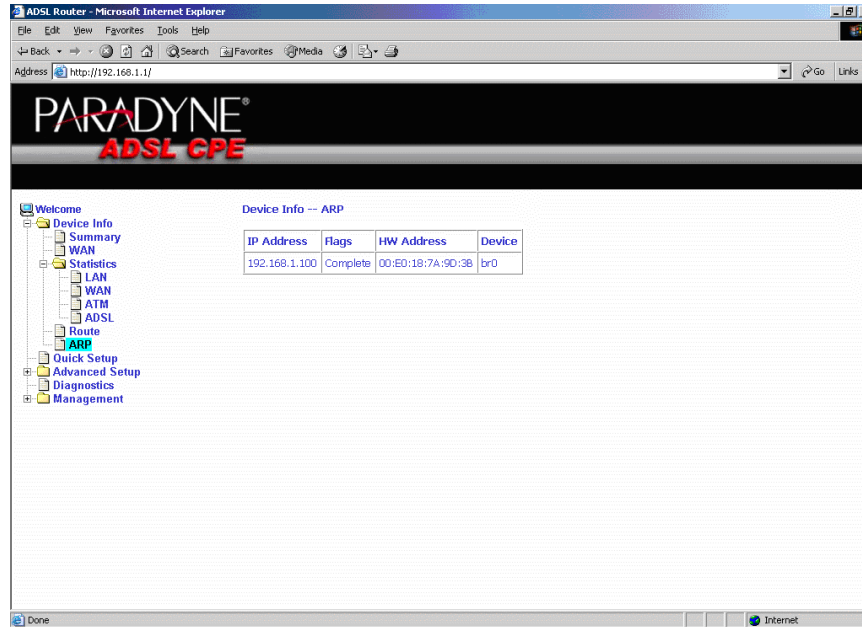


Figure 3-10. ARP Status





---

# Quick Setup

# 4

---

## Quick Setup with Auto-Connect Enabled

Auto-connect will automatically detect the first usable PVC and automatically detect PPPoE, PPPoA, and Bridge Protocol (with DHCP Server available). To use auto-connect:

### ► Procedure

1. Select Quick Setup. The Quick Setup initial screen appears.

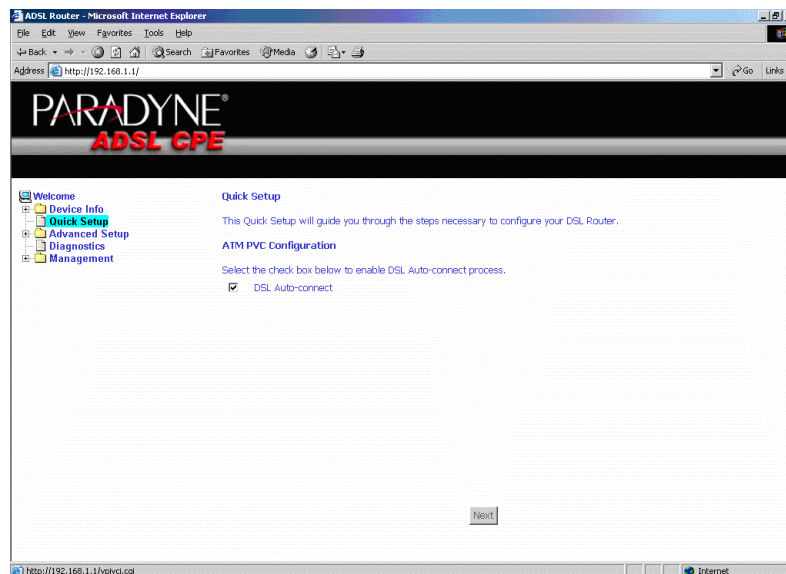


Figure 4-1. Quick Setup Initial Screen

2. Select DSL Auto-Connect, then click on Next. The progress information screen appears.

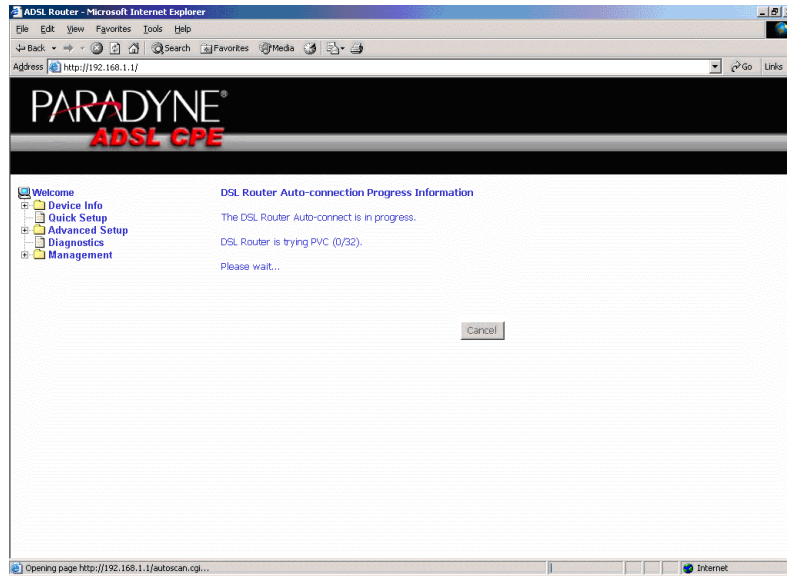


Figure 4-2. Detecting Available PVC

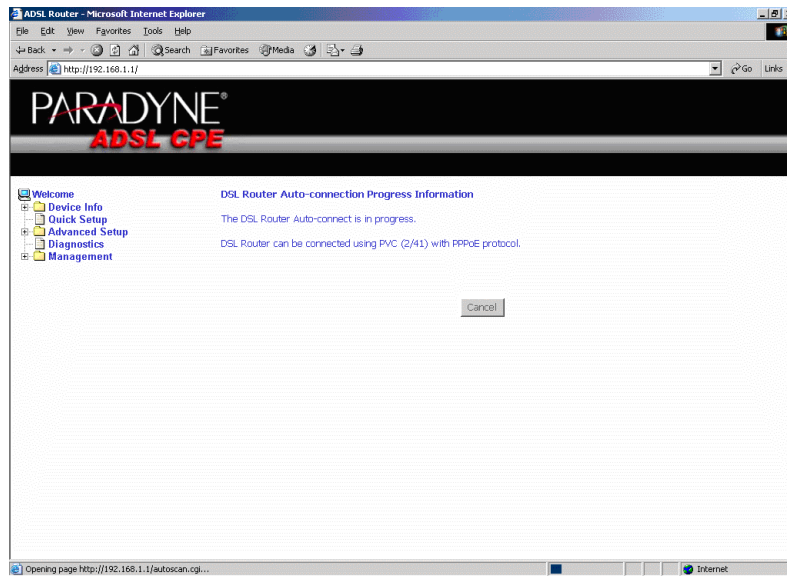


Figure 4-3. Detecting available PVC – Available PVC Detected

## Quick Setup with Auto-Connect Disabled

### ► Procedure

1. Select Quick Setup. The Quick Setup initial screen appears.

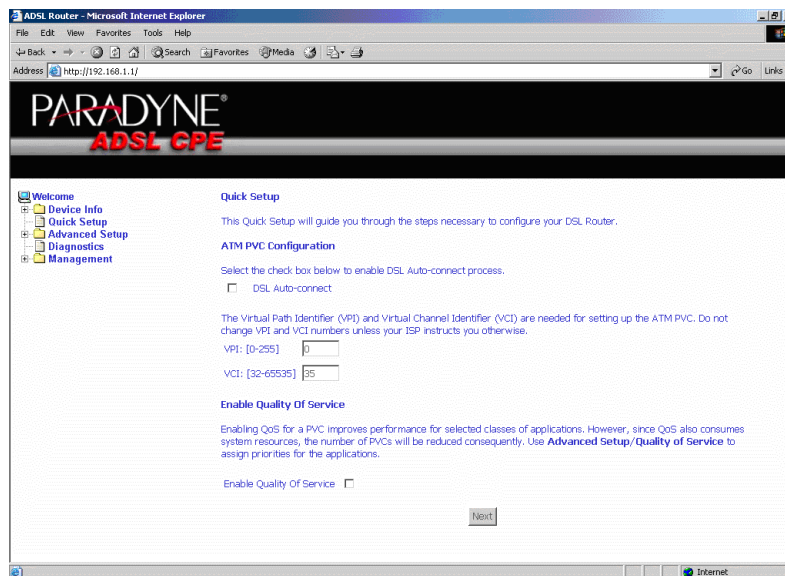


Figure 4-4. Specifying VPI and VCI

2. Verify that DSL Auto-Connect is not selected. Specify VPI and VCI as directed by your ISP. Click on Next.
3. Use Advanced Setup to configure the PVC.



---

# Advanced Setup

# 5

---

## WAN

Set up WAN parameters as directed by your ISP.

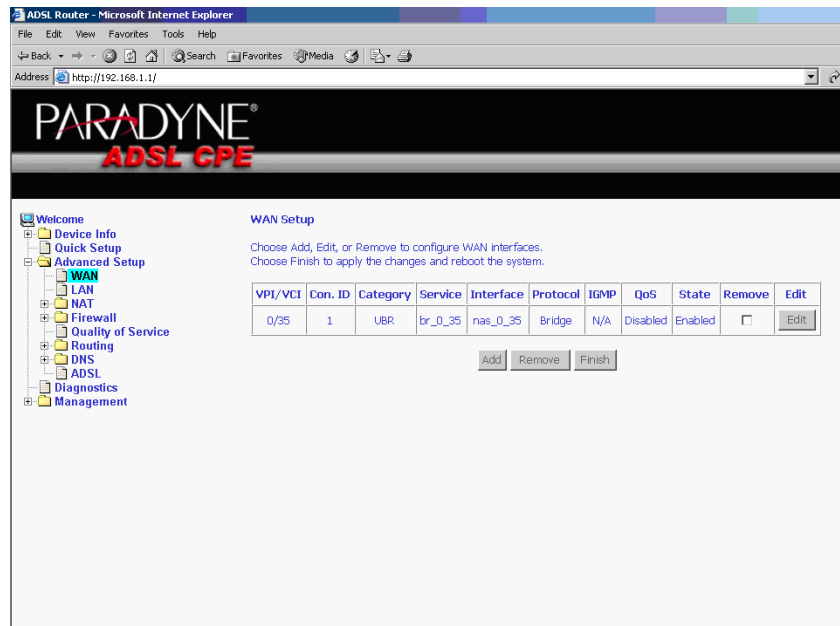


Figure 5-1. WAN Setup Screen

## Add Function – ATM PVC Configuration

If you want to add a new rule for the WAN interface, click on the Add button. The ATM PVC Configuration screen appears. The ATM PVC Configuration screen allows you to configure an ATM PVC identifier (VPI and VCI) and select a service category.

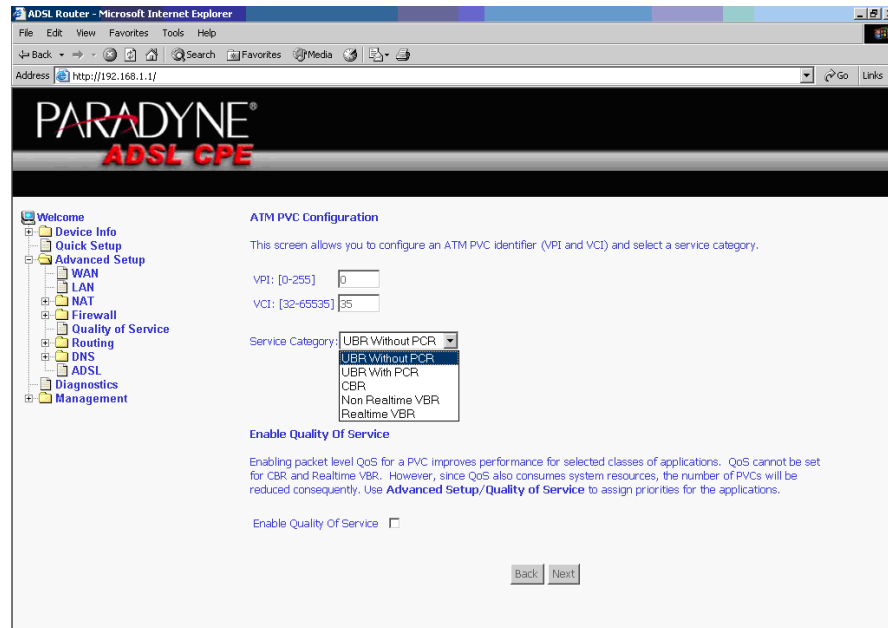


Figure 5-2. ATM PVC Configuration Screen

Verify the following values with your ISP before you change them.

- VPI (Virtual Path Identifier) – The valid range is 0 to 255.
- VCI (Virtual Channel Identifier) – The valid range is 32 to 65535.
- Service Category – Five classes of traffic defined are defined:
  - UBR Without PCR
  - UBR With PCR
  - CBR
  - Non-Realtime VBR
  - Realtime VBR

## Connection Type Screen

Select the type of network protocol and encapsulation mode over the ATM PVC that your ISP has instructed you to use, then click on Next button.

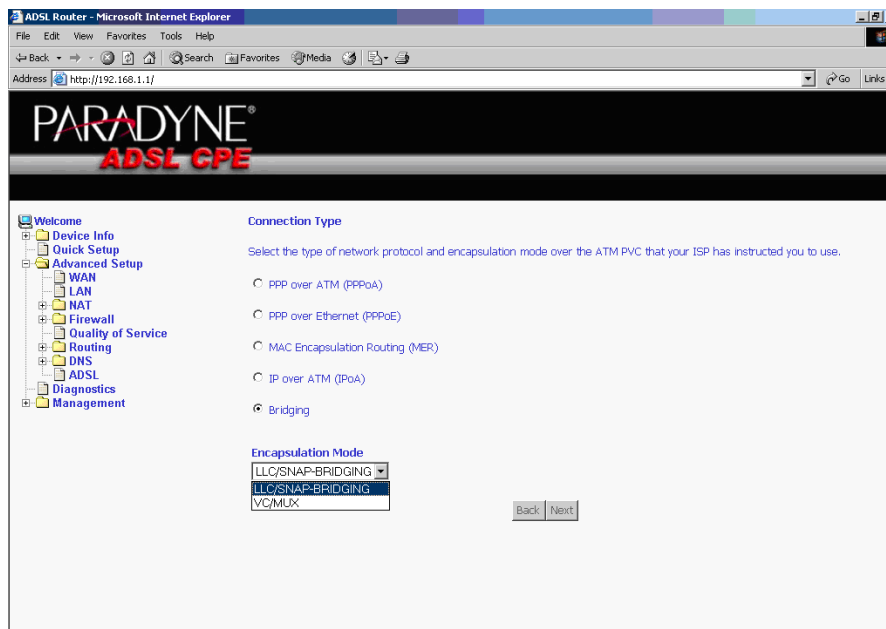


Figure 5-3. Connection Type Screen

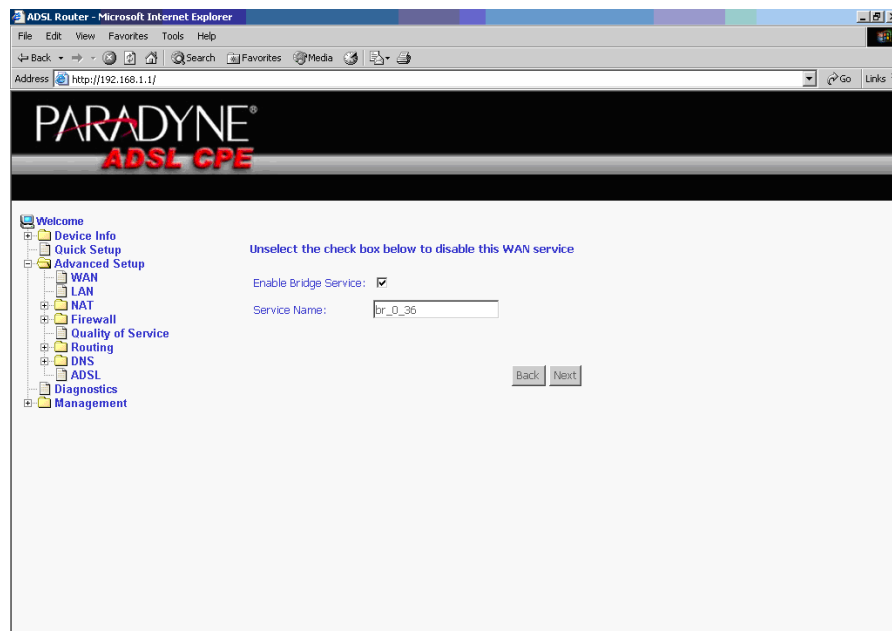
Select a connection type and click on Next.

## Bridge Service and Quality of Service Screen

This WAN service can be enabled or disabled by clicking in the check box.

Enabling QoS for a PVC improves performance for selected classes of applications. However, since QoS also consumes system resources, the number of PVCs is reduced. The default setting for QoS is disabled. If you want to enable QoS service, select the "Enable Quality Of Service" check box.

After finishing steps as above, click on the Next button.



**Figure 5-4. Enable Bridge Service**



## WAN Setup - Summary

Make sure that the settings on the WAN Setup screen match the settings provided by your ISP. If all settings are correct, click on the Save button to save these settings; if not, click on the Back button to make any modifications. If you want to change any item after saving, click on the Edit button to make any modifications.

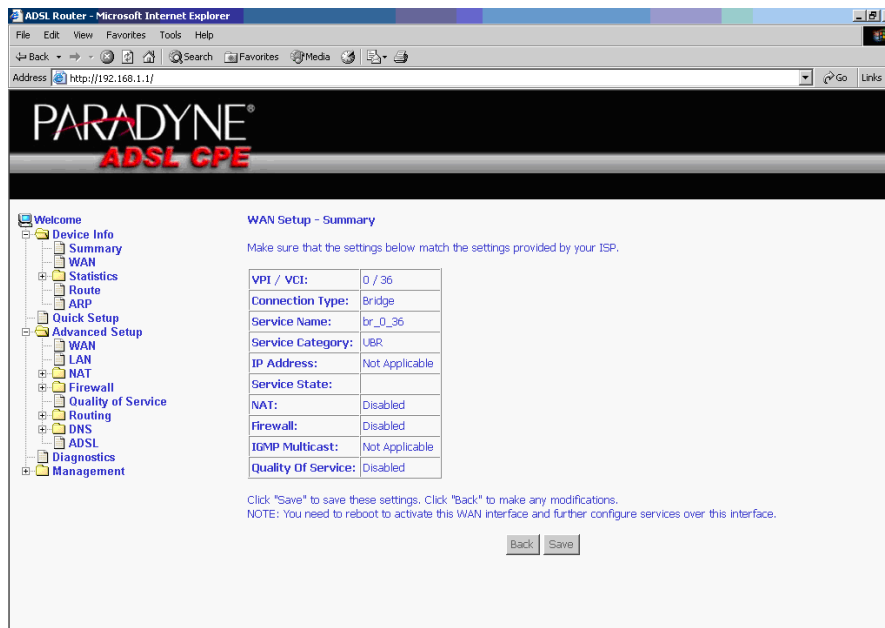


Figure 5-5. WAN Setup Summary

### Note

Activate this WAN interface by clicking on the Finish button and further configuring services over this interface. The router supports up to five WAN connections.

## Remove Function

If you want to delete a connection from the listed WAN setup, click in the Remove check box next to the item, then click on the Remove button.

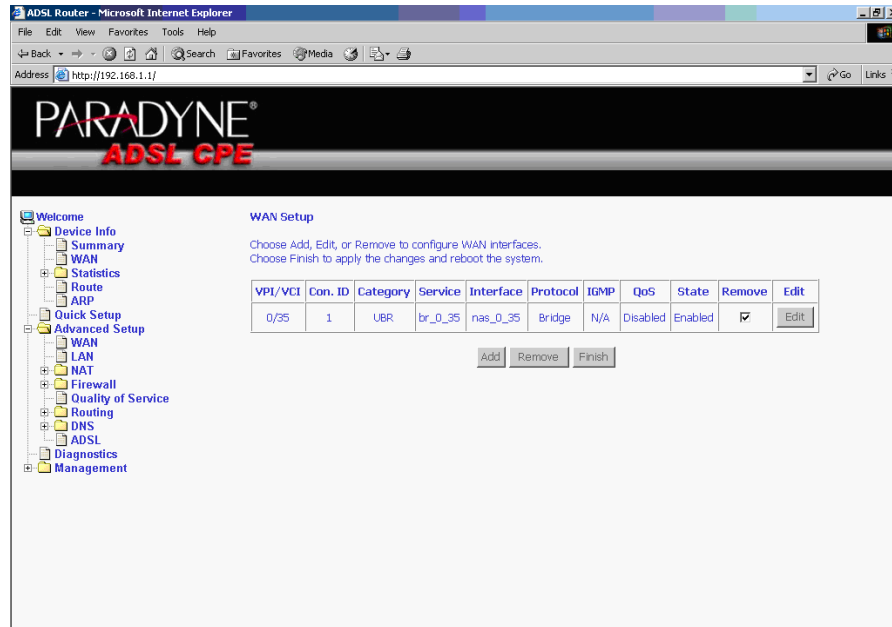


Figure 5-6. WAN Setup List

## Finish Function

After you change any item in WAN Setup, remember to click on the Finish button to apply the changes and reboot the system.

## Local Area Network (LAN) Setup

You can configure the DSL Router IP address and Subnet Mask for the LAN interface to conform your LAN's IP Subnet. The Save button only saves the LAN configuration data. The Save/Reboot button saves the LAN configuration data and reboots the router to make the new configuration effective.

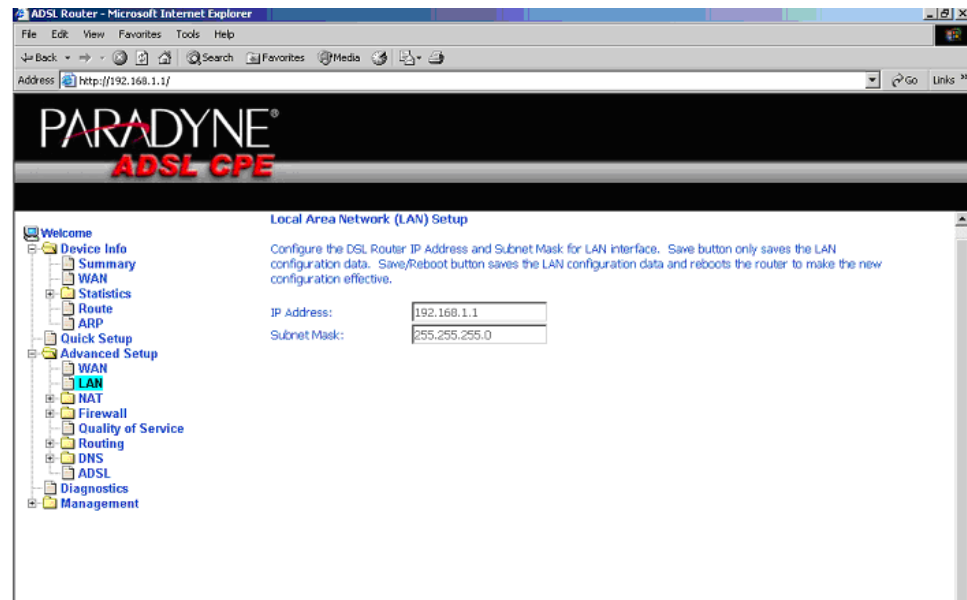


Figure 5-7. LAN Setup

## NAT

You can configure the Virtual Server, Port Triggering, and DMZ Host when NAT is enabled.

### Virtual Servers

A virtual server allows you to direct incoming traffic from the WAN side to a specific IP address on the LAN side. Click on the Add button to add a virtual server.

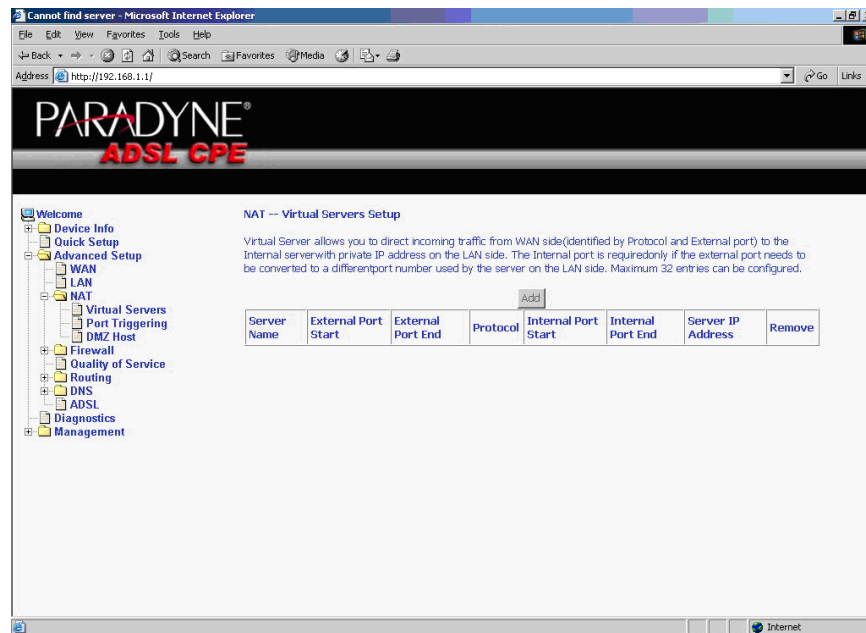


Figure 5-8. NAT Virtual Server Setup

You can select a Service or make new one. Enter the Server IP Address, then click on Save/Apply to submit your configuration.

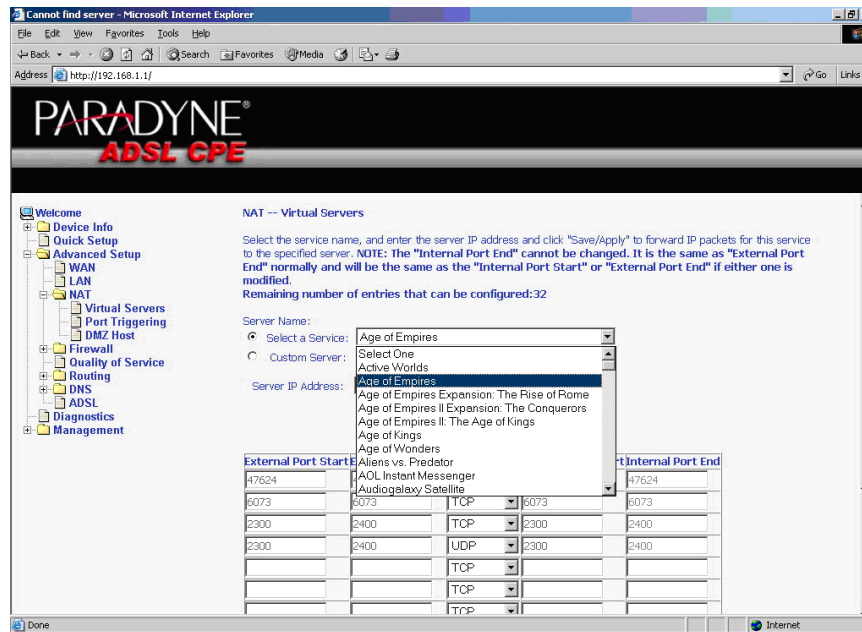


Figure 5-9. Virtual Server Add Screen

On this screen you can view and delete servers. Click in the check box under Remove and click on the Remove button to delete selected virtual servers.

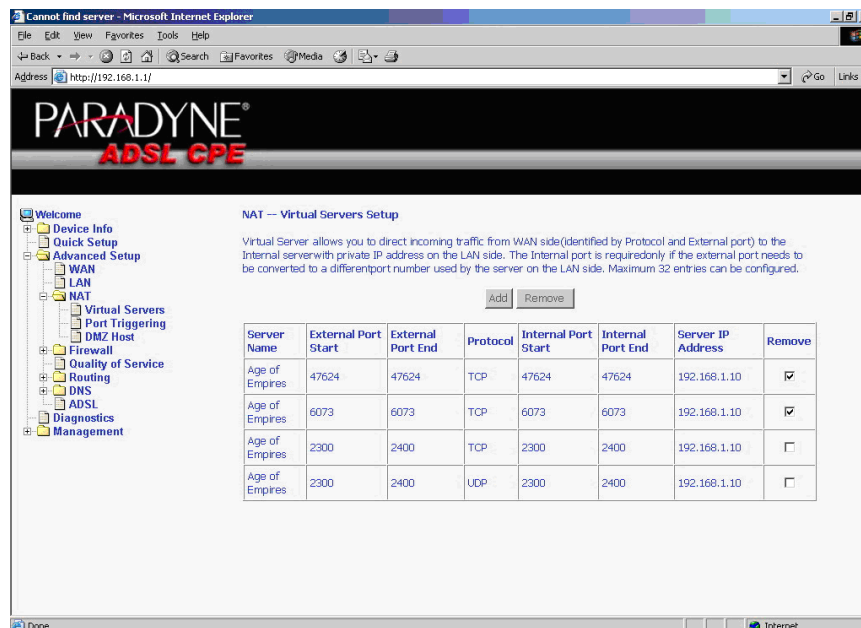


Figure 5-10. Removing Selected Virtual Servers

## Port Triggering

Click the on the Add button to add Port Triggering for your Internet application.

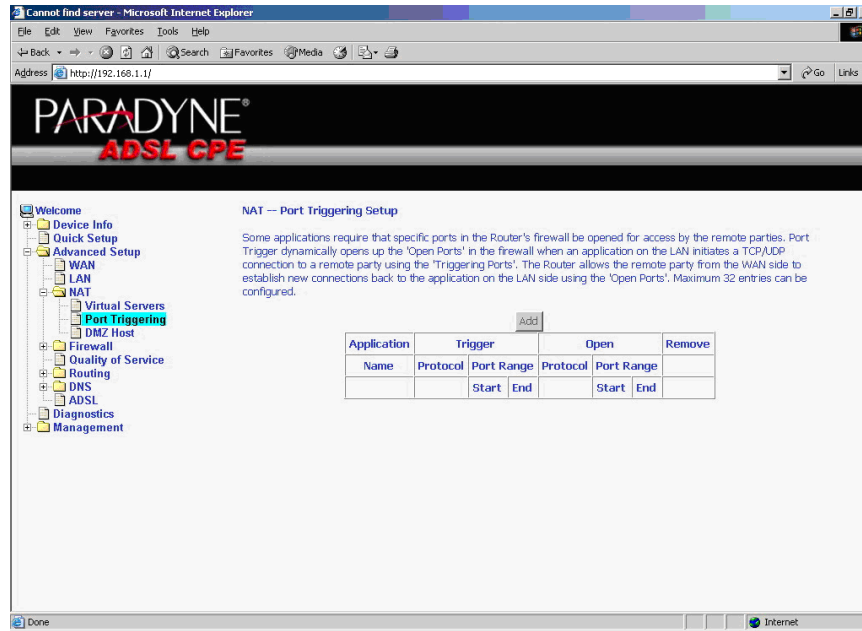


Figure 5-11. Port Triggering Setup Page

You can select an application every time or create new one for your application. Then click on Save/Apply to save your settings.

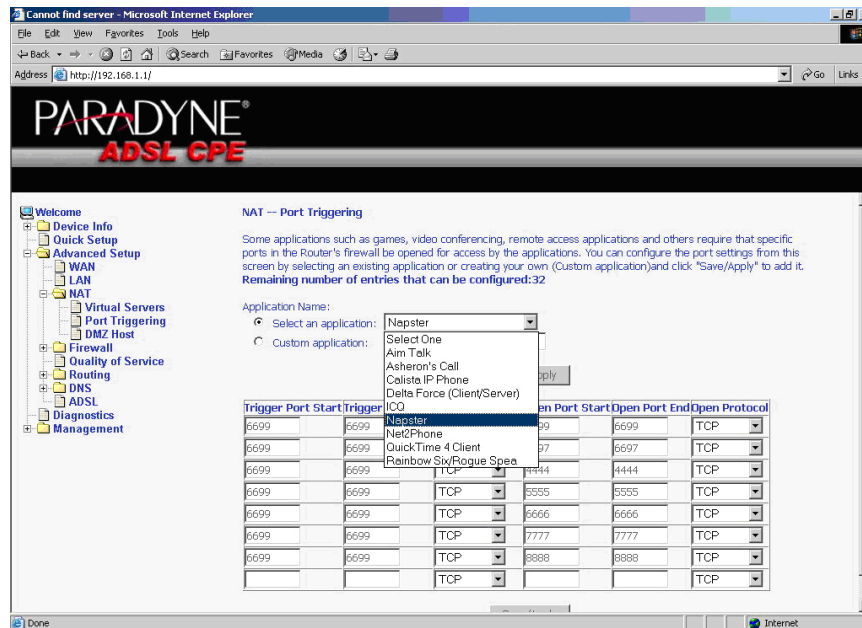


Figure 5-12. Port Triggering Add Page

On this screen you can view and delete applications. Click in the check box under Remove and click on the Remove button to delete selected applications.

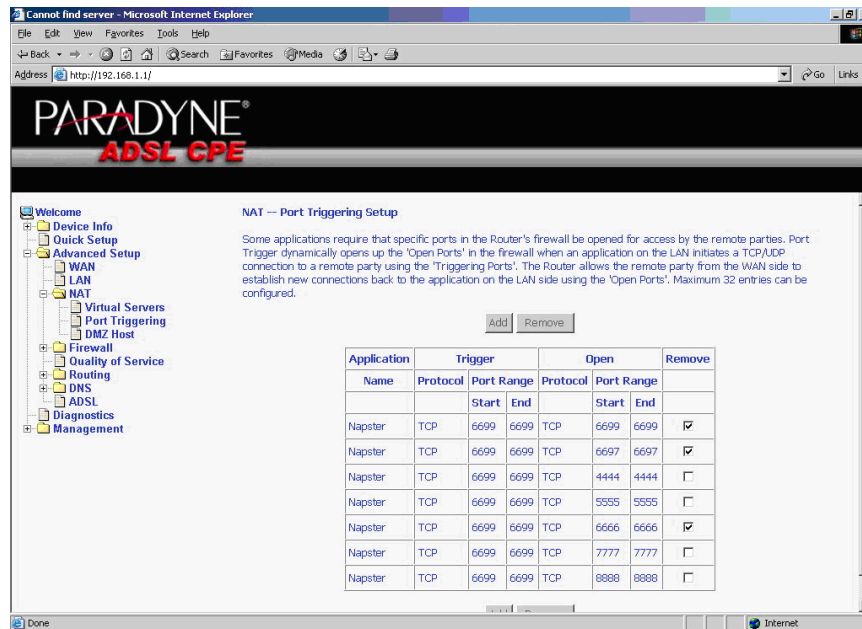


Figure 5-13. Port Triggering List

## DMZ Host

You can define the IP address of the DMZ Host on this screen. Enter the IP address and click on Save/Apply.

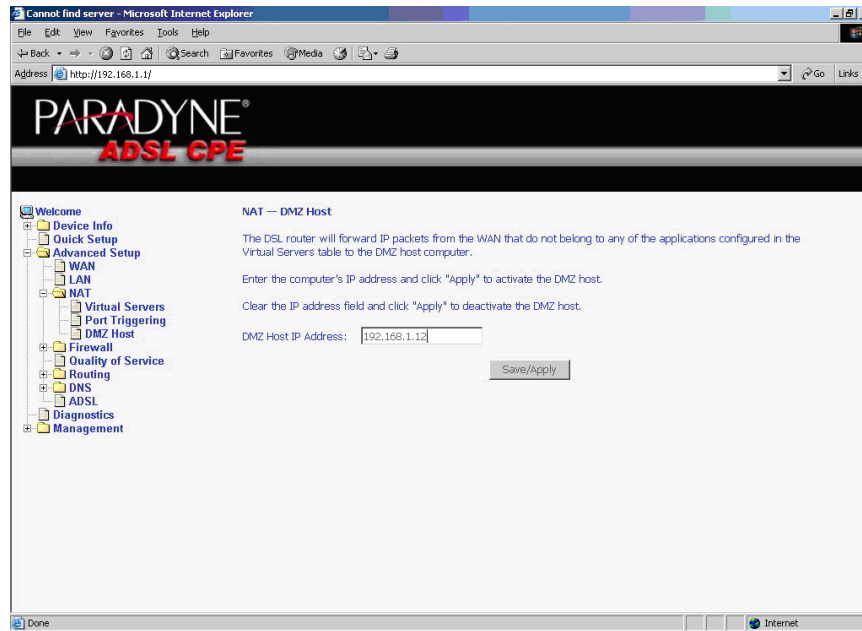


Figure 5-14. DMZ Host Setup



## Firewall

For security reasons, firewall options can be configured only from the LAN side of the router.

### IP Filtering – Outgoing

The outgoing filter will block the traffic from the LAN side to the WAN side. Click on Add to create filters.

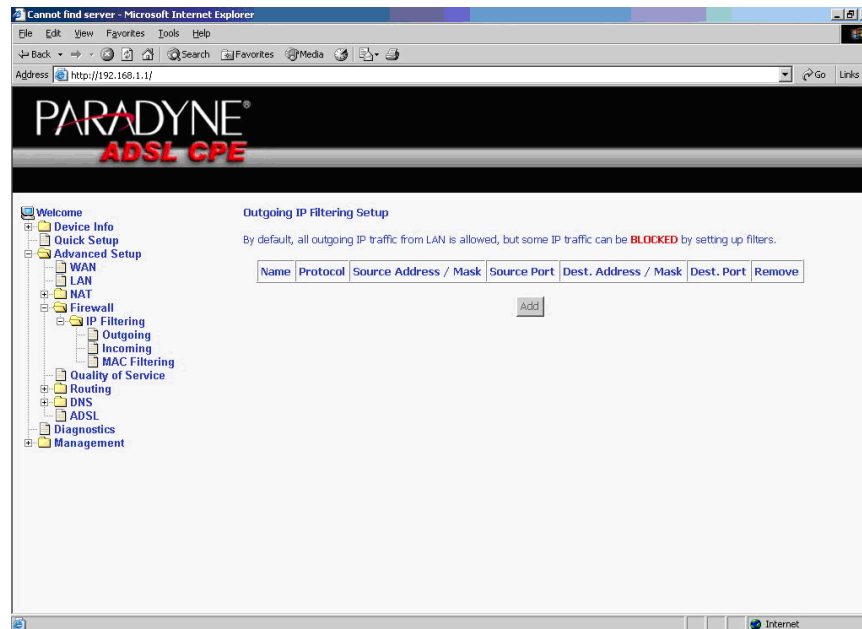


Figure 5-15. IP Filtering – Outgoing Filter Setup

Input the filter name, source information (from the LAN side), and Destination information (from the WAN side). Then click on Save/Apply.

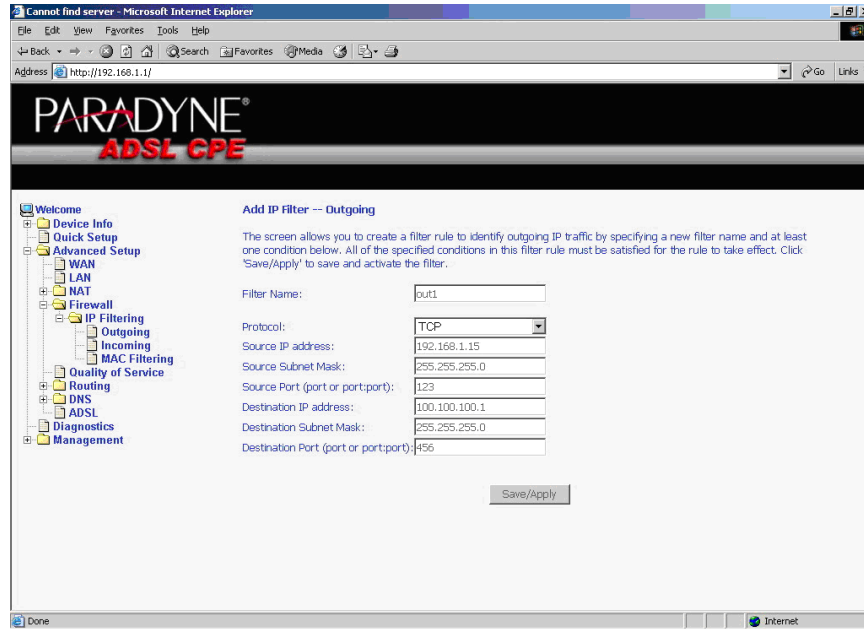


Figure 5-16. IP Filtering - Outgoing Filter Add Page

You can view and delete the outgoing filter settings on this screen.

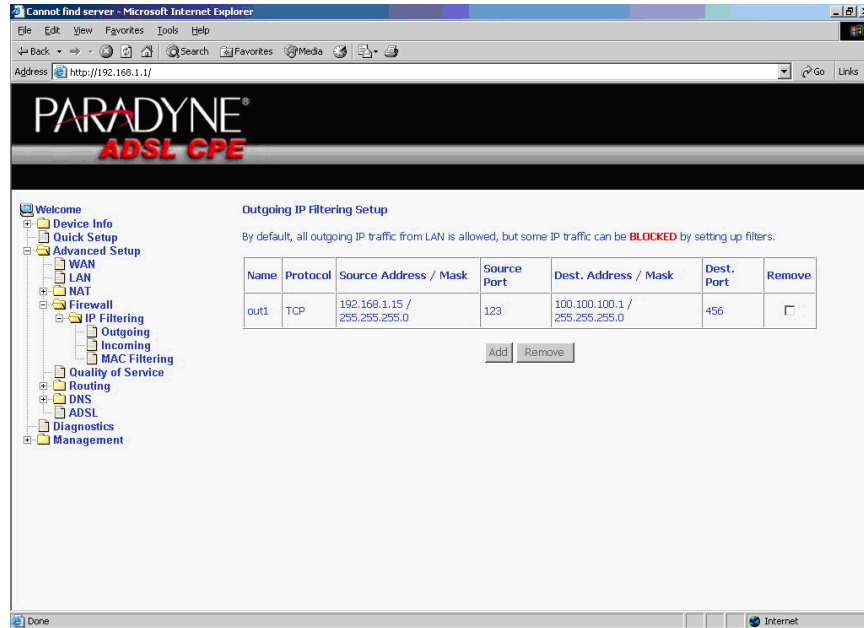


Figure 5-17. IP Filtering - Outgoing Filter Setup List

## IP Filtering – Incoming

Incoming filter filters the traffic from the WAN side to the LAN side. Click on Add to add incoming filter settings.

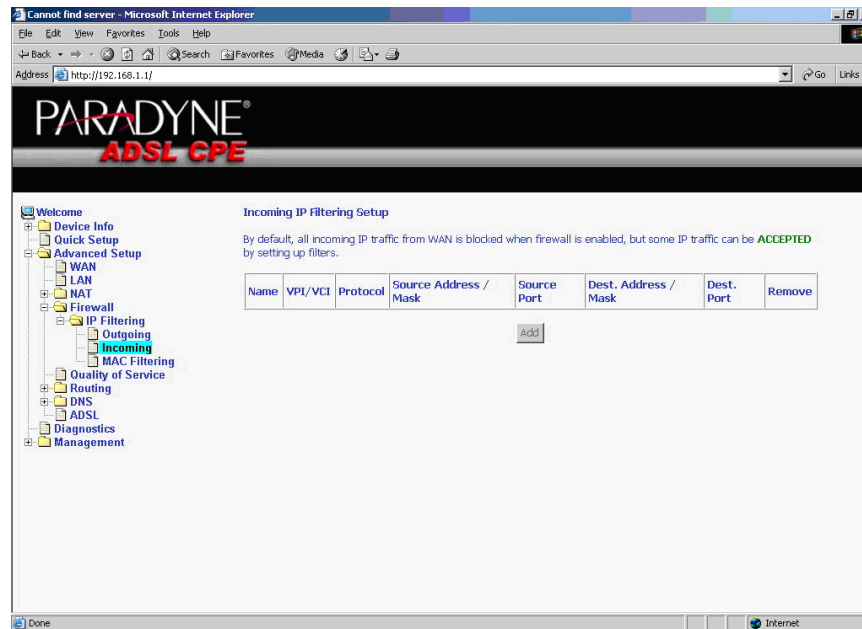


Figure 5-18. IP Filtering – Incoming Filter Setup Page

Enter a filter name, information about the source address (from the WAN side), and information about the destination address ( to the LAN side). Select the protocol and WAN interface. Then click on Save/Apply to add the setting.

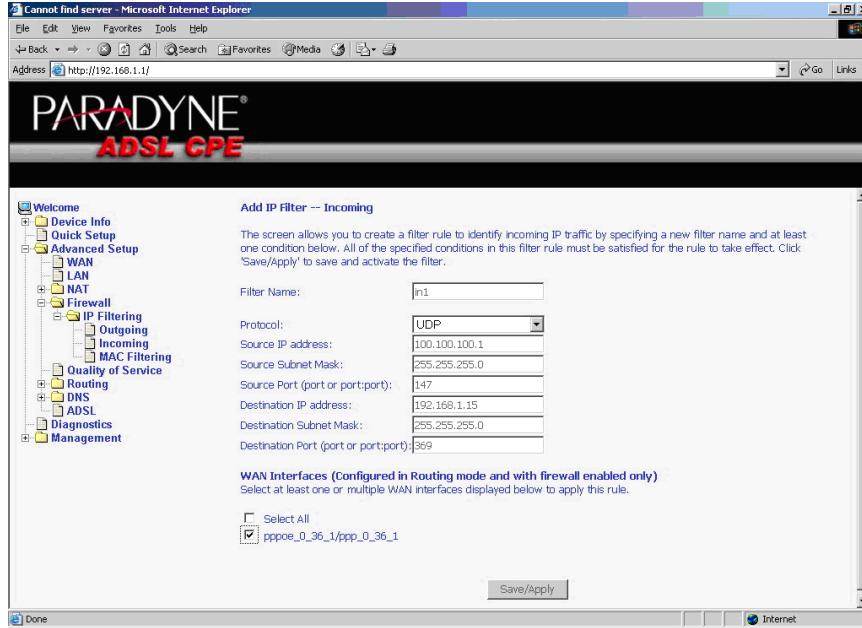


Figure 5-19. IP Filtering - Incoming Filter Add

You can view and delete the incoming filter settings from this screen.

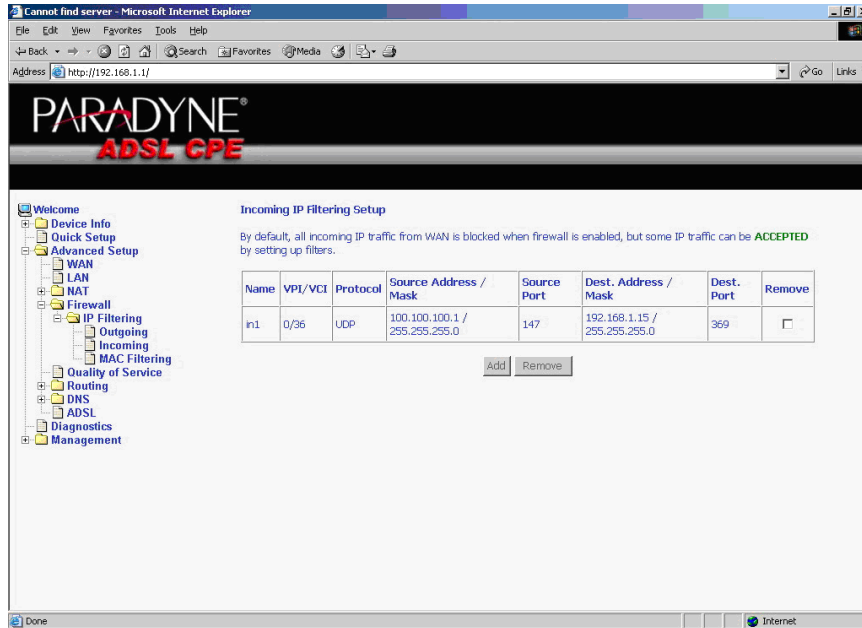


Figure 5-20. IP Filtering - Incoming Filtering List

## Firewall – MAC Filtering

MAC filtering can forward or block traffic by MAC address. You can change the policy or add settings to the MAC filtering table using the MAC Filtering Setup screen.

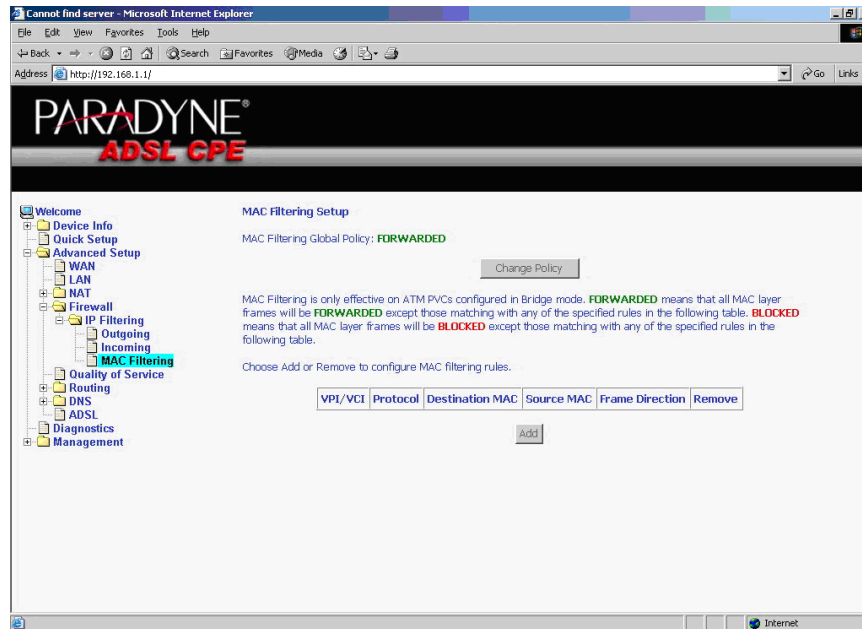


Figure 5-21. IP Filtering - MAC Filtering Setup

If you click on Change Policy, a confirmation dialog lets you verify your change.

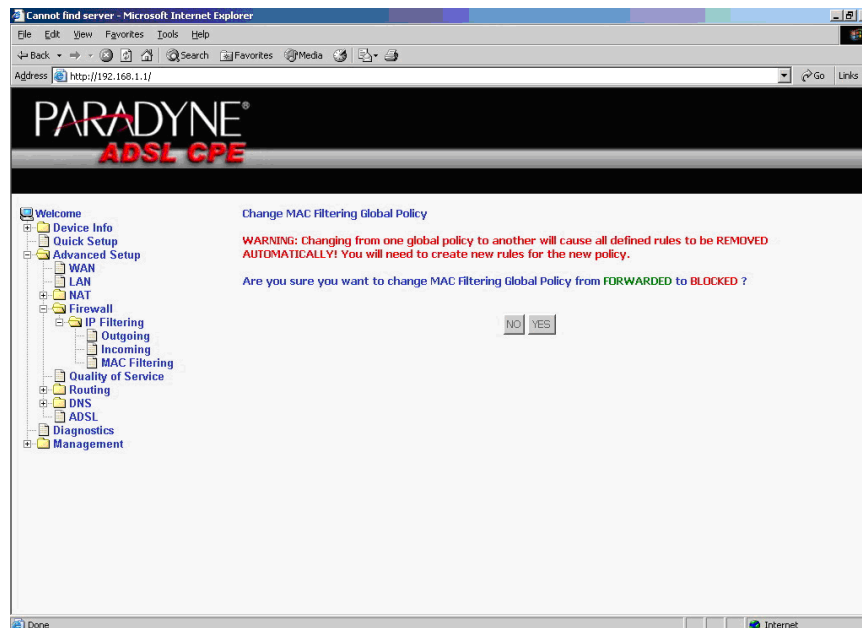


Figure 5-22. IP Filtering - MAC Filtering Policy Change Confirmation

If you want to add a setting to the MAC filtering table, enter the Source and Destination MAC address, and select protocol type, frame direction, and WAN interface. Then click on Save/Apply to save it.

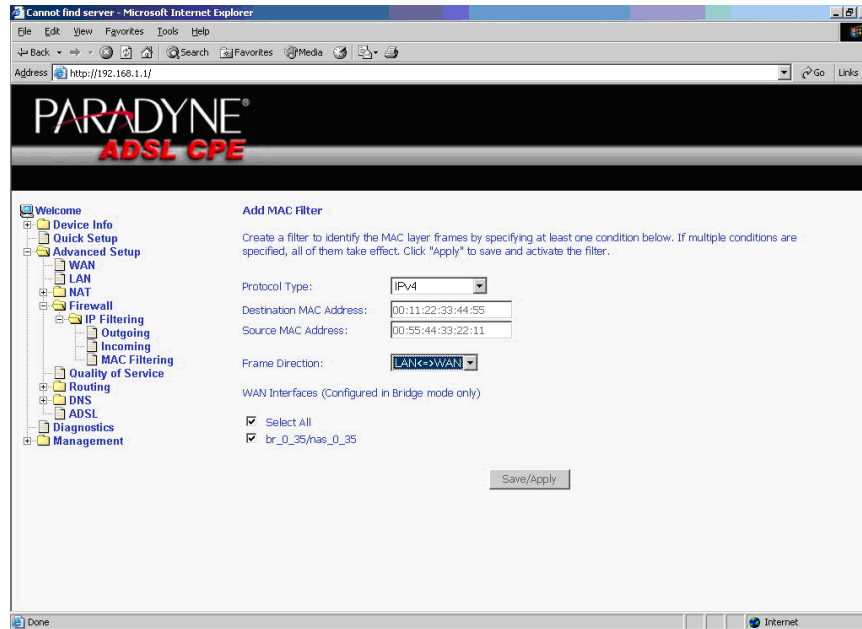


Figure 5-23. IP Filtering - MAC Filtering Add Page

On this screen you can view and delete MAC filtering rules.

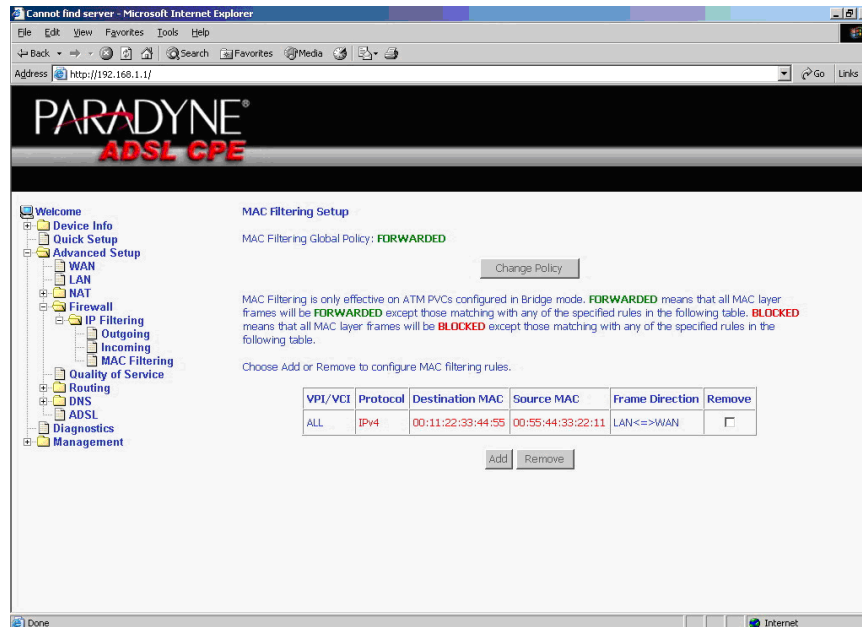


Figure 5-24. IP Filtering - MAC Filtering List

## Parental Control

Use the Parental Control feature to restrict the days and times a particular device is allowed to access the Internet.

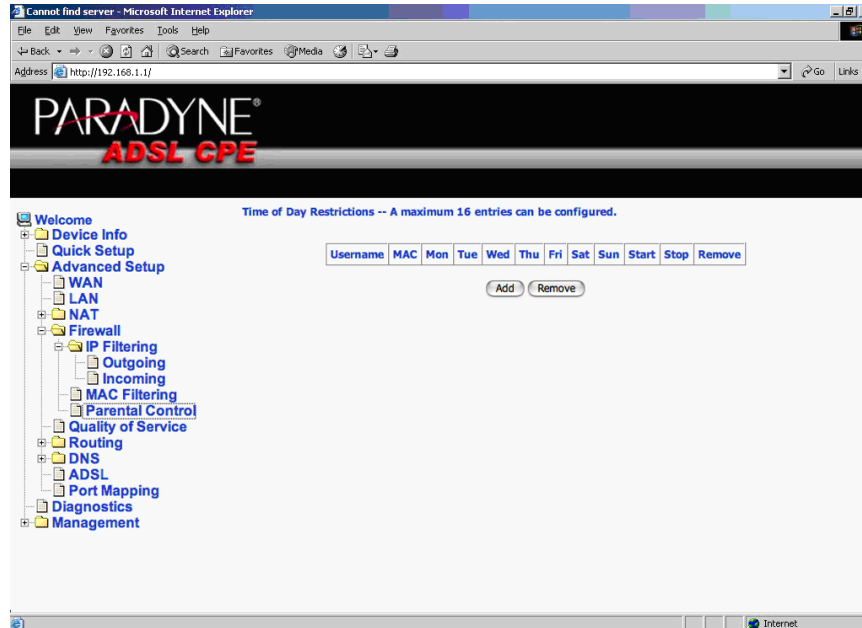


Figure 5-25. Parental Control Screen

To set up parental controls:

1. Click on Add. The Time of Day Restriction screen appears.

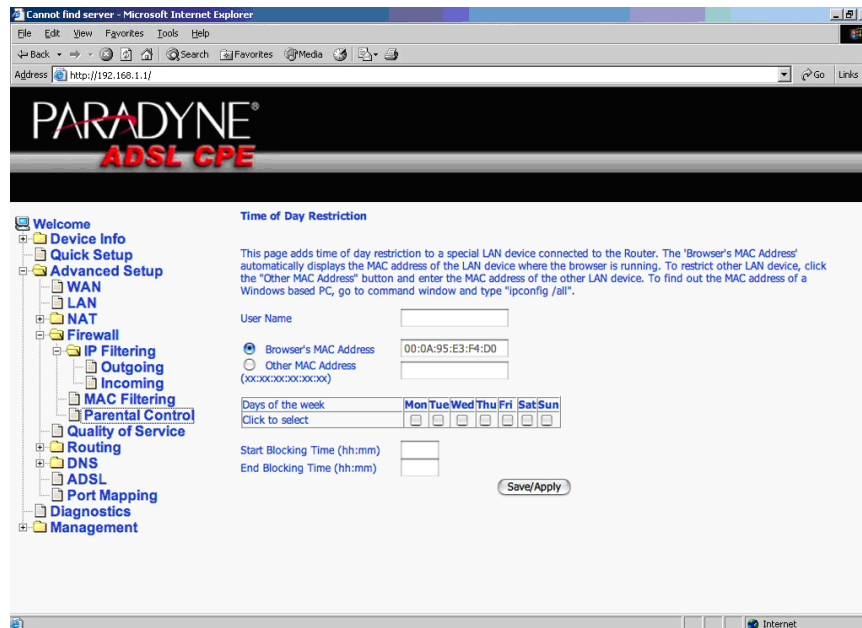


Figure 5-26. Parental Control – Time of Day Restrictions

2. Enter a User Name to identify the target of the restrictions.
3. Enter the MAC address of the network adapter to be restricted, and, optionally, another MAC address.
4. Select the days of the week the restriction is in force.
5. Specify the start and end times the restriction is in force. Use the form hh:mm, where 23:59, for example, is one minute before midnight.
6. Click on Save/Apply.

## Quality of Service

You can configure the Quality of Service to apply different priorities to traffic on the router.

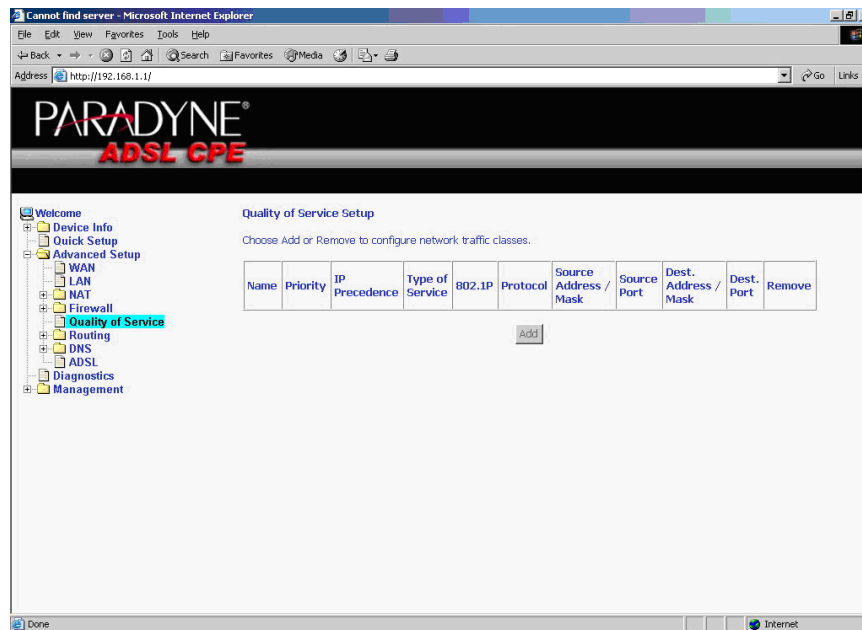


Figure 5-27. Quality of Service Setup



Click on Add and the Add Network Traffic Class Rule screen appears. Enter and select QoS parameters, then click on Save/Apply. Note that 802.1p Priority and TOS are mutually exclusive.

Figure 5-28. Quality of Service Add Screen

On this screen you can view and delete QoS settings.

Name	Priority	IP Precedence	Type of Service	802.1P	Protocol	Source Address / Mask	Source Port	Dest. Address / Mask	Dest. Port	Remove
fast1	High	0	Minimize Delay		UDP	100.100.100.2 / 255.255.255.0	258	192.168.1.15 / 255.255.255.0	357	<input type="checkbox"/>

Figure 5-29. Quality of Service List

## Routing – Default Gateway

You can change the Default Gateway on the Routing - Default Gateway screen.

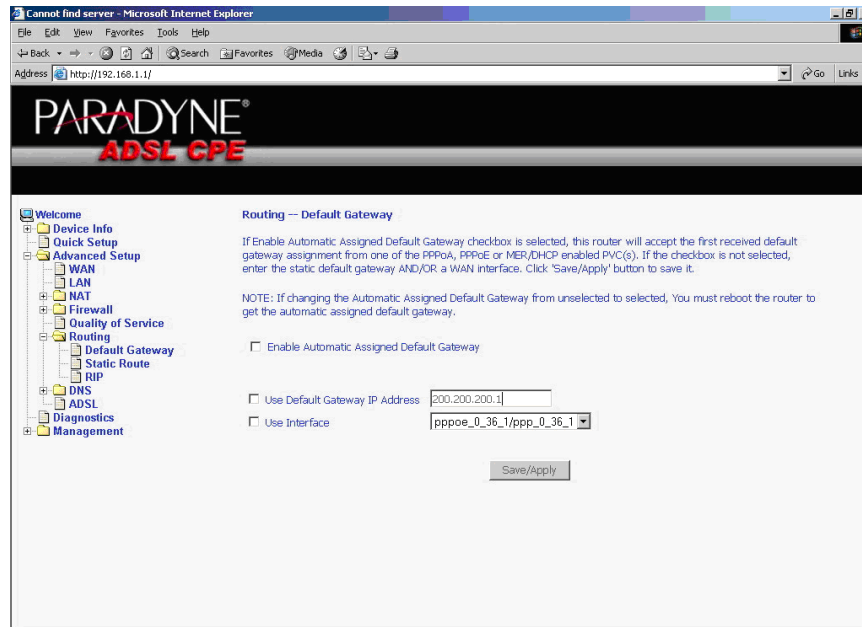


Figure 5-30. Default Gateway Setup

## Routing – Static Route

Use the Routing - Static Route screen to add a static route to the routing table.

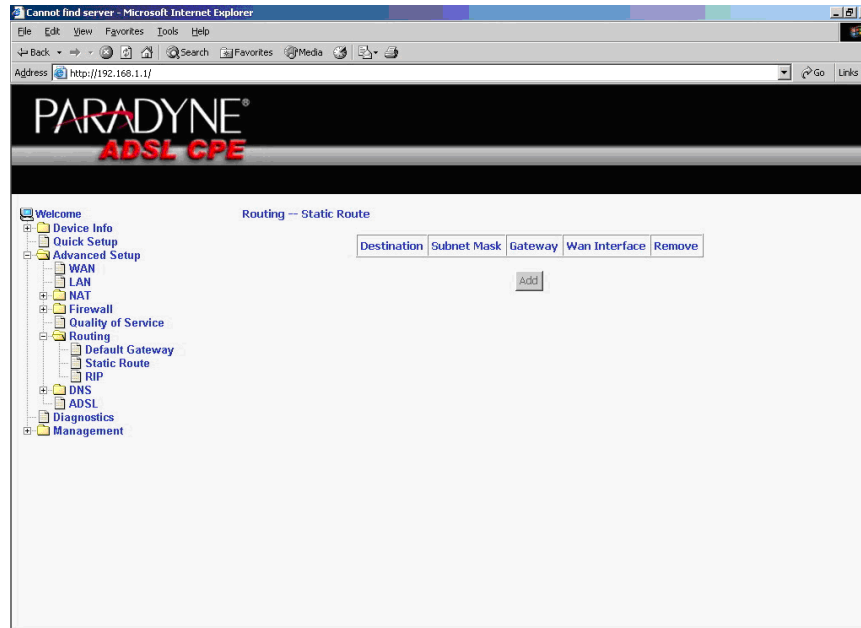


Figure 5-31. Static Route Setup

Enter the route information and click on Save/Apply to make it active. No reboot is required.

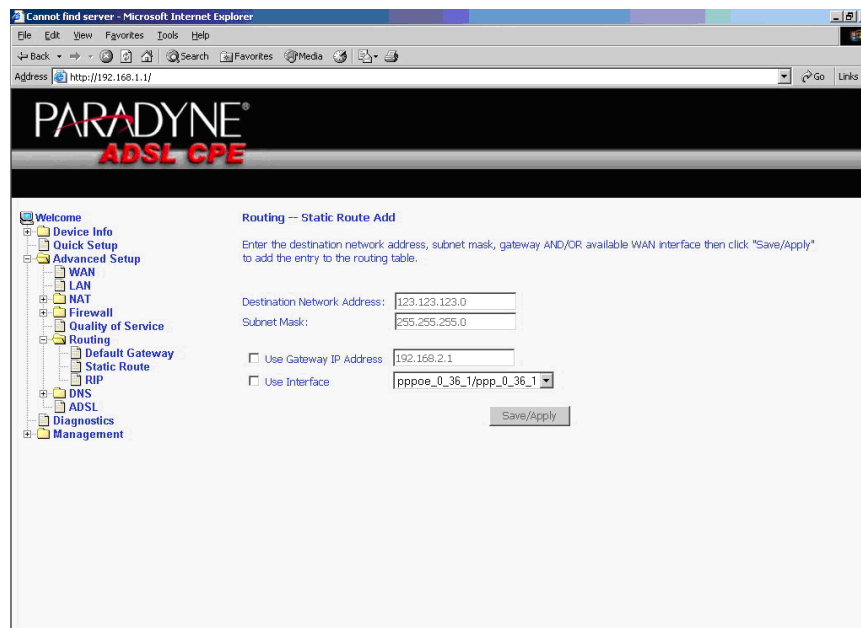


Figure 5-32. Static Route Add

## Routing – RIP

If RIP is enabled, the router operation can be configured as Active or Passive.

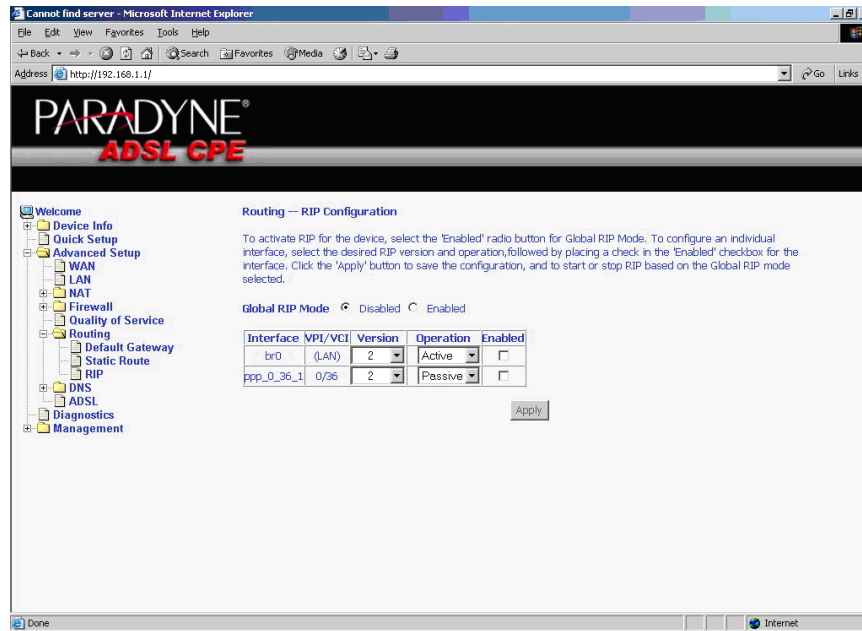


Figure 5-33. RIP Setup

## DNS Server

Use the DNS Server screen to request automatic assignment of a DNS or to specify a primary and secondary DNS.

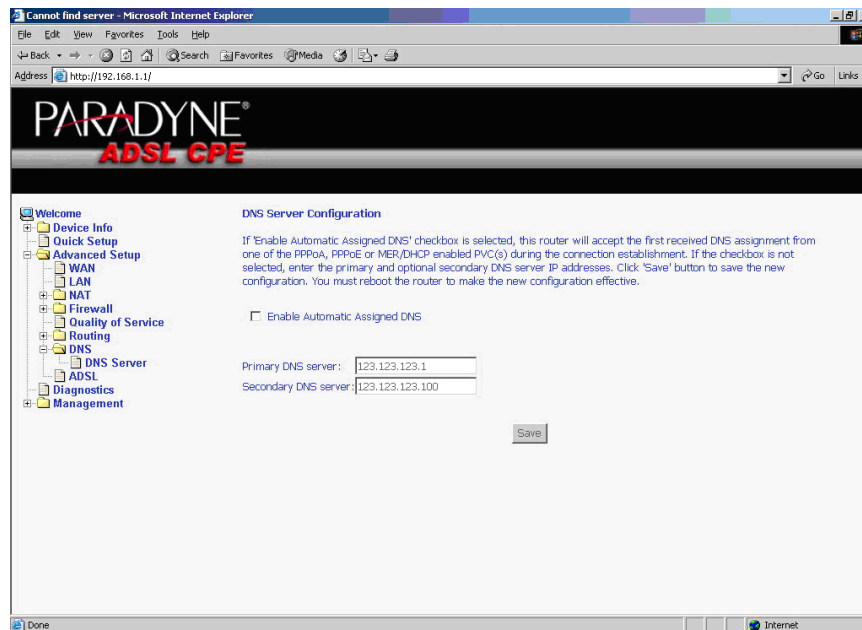


Figure 5-34. DNS Setup

## Dynamic DNS

Use the Dynamic DNS screen to alias a dynamic IP address to a static hostname, allowing your router to be easily accessed from anywhere on the Internet.

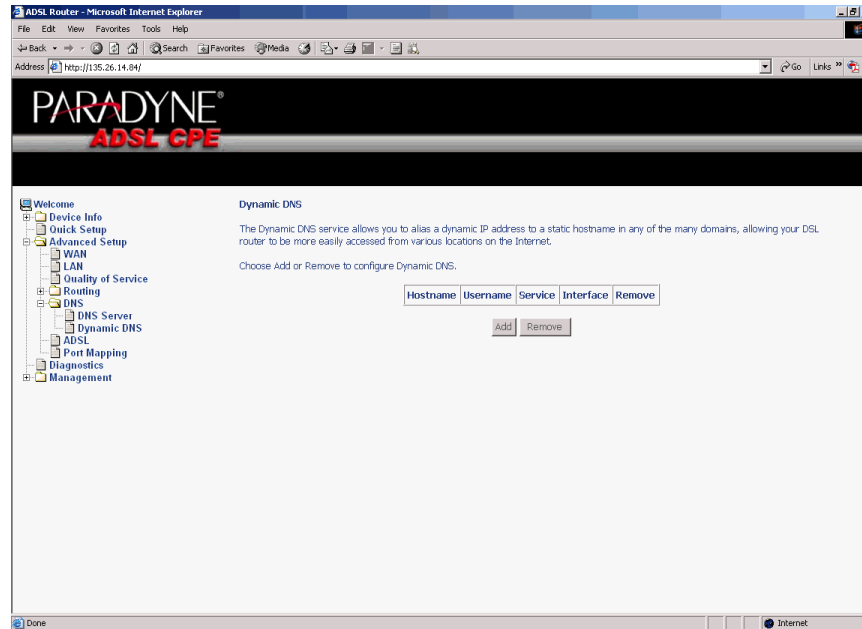


Figure 5-35. Dynamic DNS

To set up a Dynamic DNS entry:

1. Click on Add. The Add Dynamic DNS screen appears.

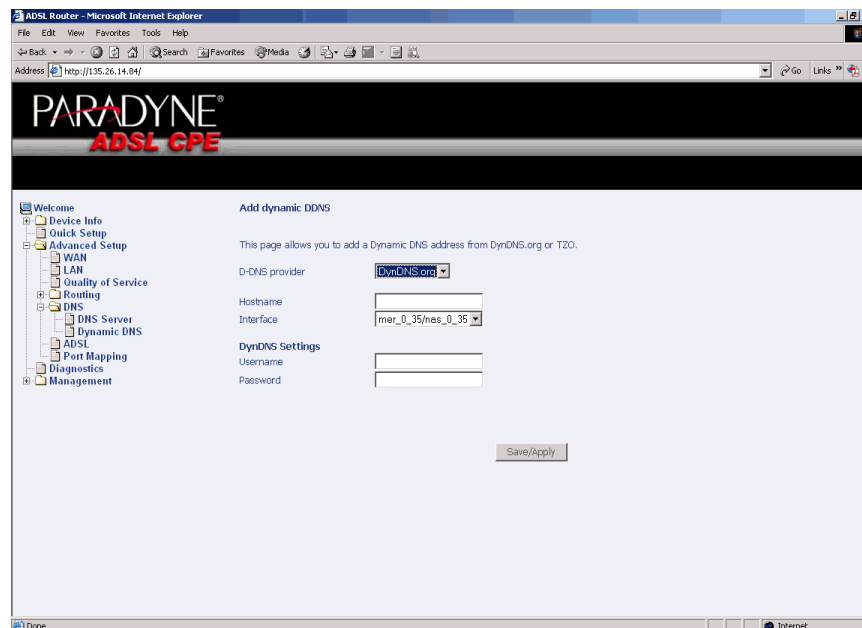


Figure 5-36. Adding a Dynamic DNS Entry

2. Select a D-DNS Provider from the drop-down list.
3. Enter the Hostname you have selected for the interface.
4. Select the router Interface from the drop-down list.
5. Enter the information you used to register with the dynamic DNS service: for DynDNS, enter your Username and Password; for TOZ, enter your E-mail address and Key.
6. Click on Save/Apply.

## ADSL

There are three major items in the ADSL settings.

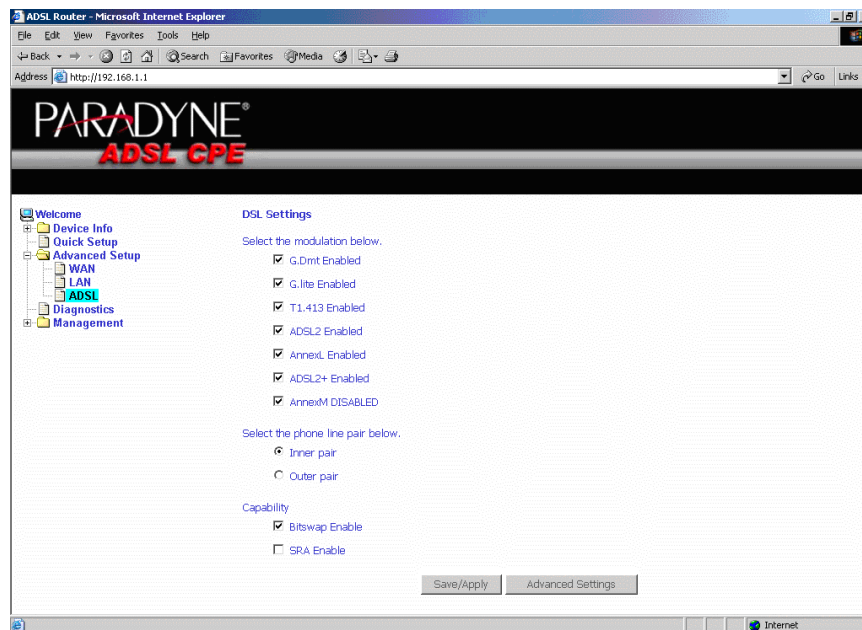


Figure 5-37. DSL Settings

## Modulation Methods

The following modulation methods are supported by the 6211 ADSL router:

- G.dmt Enabled
- G.lite Enabled
- T1.413 Enabled
- ADSL Enabled
- Annex L Enabled
- ADSL2+ Enabled.

Do not change this setting unless so directed by your ISP.

## Phone Line Pair

The 6211 ADSL router supports phone lines on pins 2 and 3 or pins 1 and 4 to connect your ADSL line. If your phone system uses pins 2 and 3, attach a normal RJ11 cable to the router and select "Inner pair" on the screen; if your phone system uses pins 1 and 4, attach the phone with the supplied RJ11 cable and select "Outer pair" on the screen.

## Capability

The following are included under Capability:

- Bitswap Enable
- SRA (Seamless Rate Adaptation) Enable

Do not change these settings unless so directed by your ISP.

## DSL Advanced Settings

Do not change the DSL Advanced Settings unless so directed by your ISP. To view the DSL Advanced Settings screen, click on the Advanced Settings button on the DSL Settings screen (see [Figure 5-37](#)).

There are five test modes between the router and your ISP:

- Normal test: Puts the router in a test mode in which it only sends a Normal signal.
- Reverb test: Puts the router in a test mode in which it only sends a Reverb signal.
- Medley test: Puts the router in a test mode in which it only sends a Medley signal.
- No Retrain: In this mode the router will try to establish a connection as in normal mode, but once the connection is up it will not retrain if the signal is lost.
- L3: Puts the router into the L3 power state.

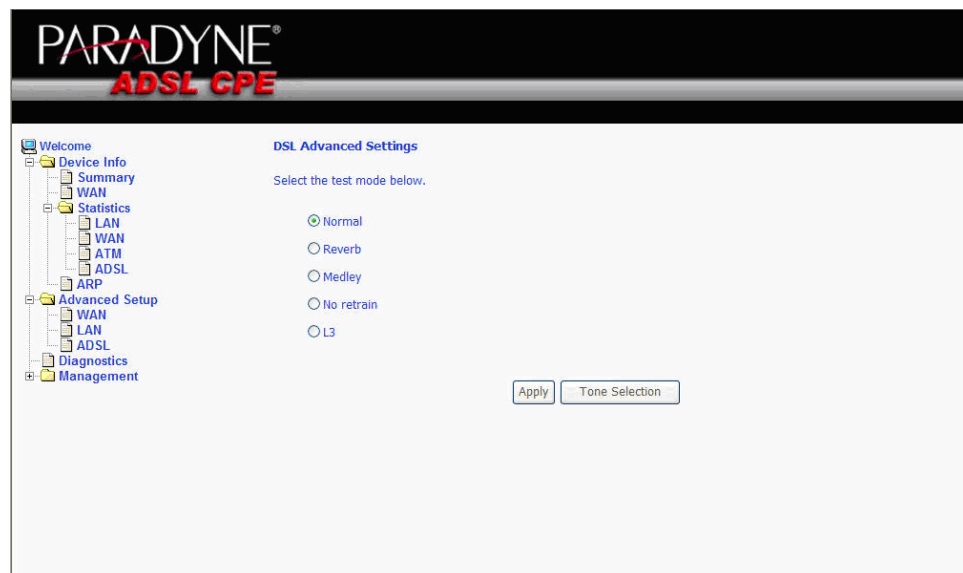


Figure 5-38. DSL Advanced Settings

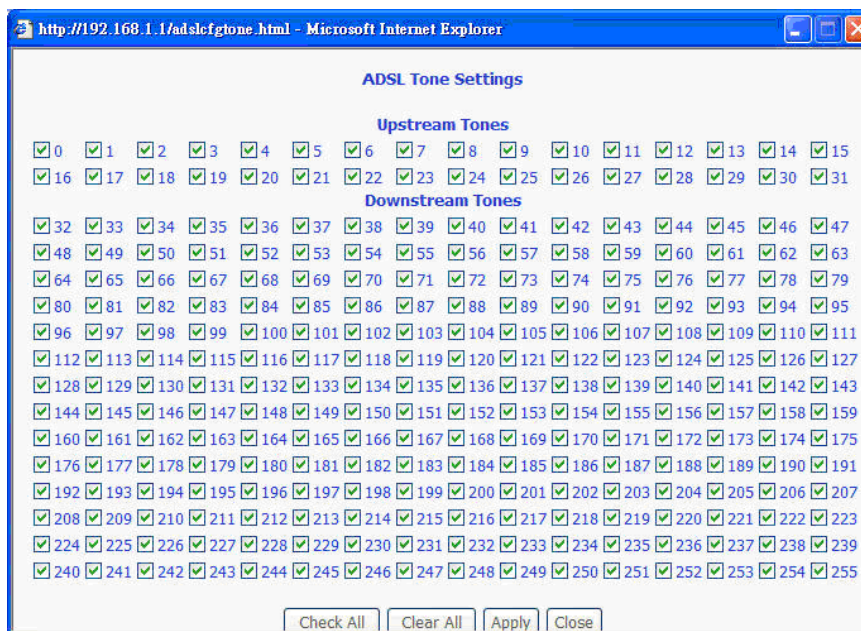


## Tone Selection

To view the ADSL Tone Settings screen, click on the Tone Selection button of the DSL Advanced Settings screen (see [Figure 5-38](#)).

The frequency band of ADSL is split up into 256 separate tones, each spaced 4.3125 kHz apart. With each tone carrying separate data, the technique operates as if 256 separate modems were running in parallel. The tone range is from 0 to 31 for upstream and from 32 to 255 for downstream.

Do not change these settings unless so directed by your ISP.



**Figure 5-39. Tone Settings**

## Port Mapping

Use the Port Mapping screen to map multiple ports to a PVC and create bridging groups. Each group will perform as an independent network.

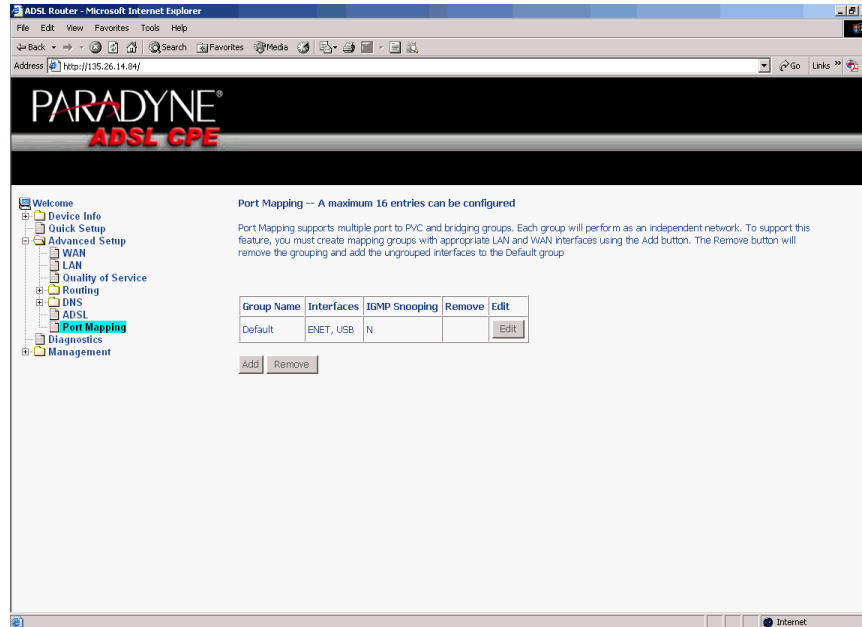


Figure 5-40. Port Mapping

To create a new mapping group:

1. Click on Add. The Port Mapping Configuration screen appears.

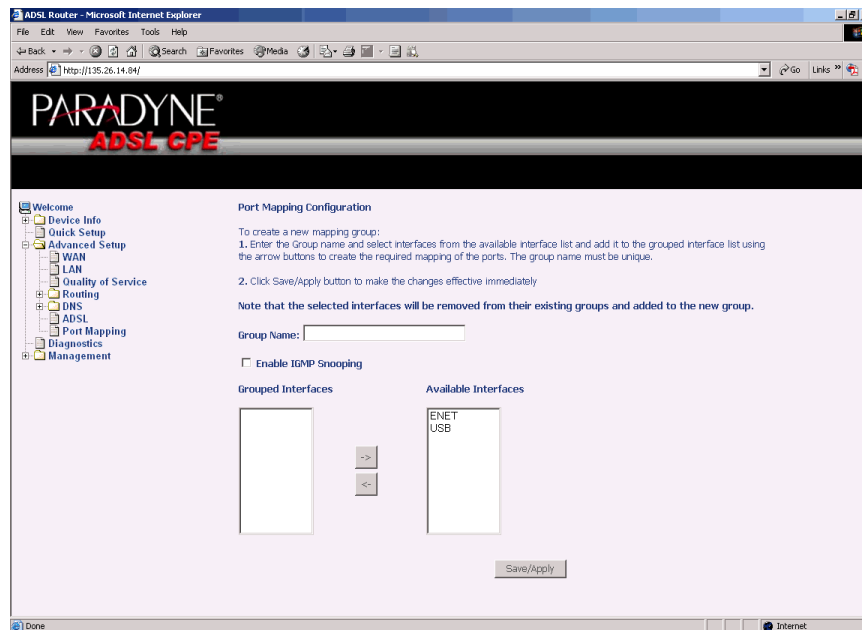


Figure 5-41. Creating a Port Mapping Entry

2. Enter a unique Group name.
3. Select interfaces from the available interface list and add them to the grouped interface list using the arrow buttons to create the required mapping of the ports.
4. Click on Save/Apply.



---

# Diagnostics

# 6

---

## Testing the DSL Connection

Your router is capable of testing your DSL connection. The individual tests are listed below. If a test displays a failure status, click on "Test" at the bottom of this page to make sure the failure status is consistent. If the test result continues to show a failure, click on "Help" and follow the troubleshooting procedures.

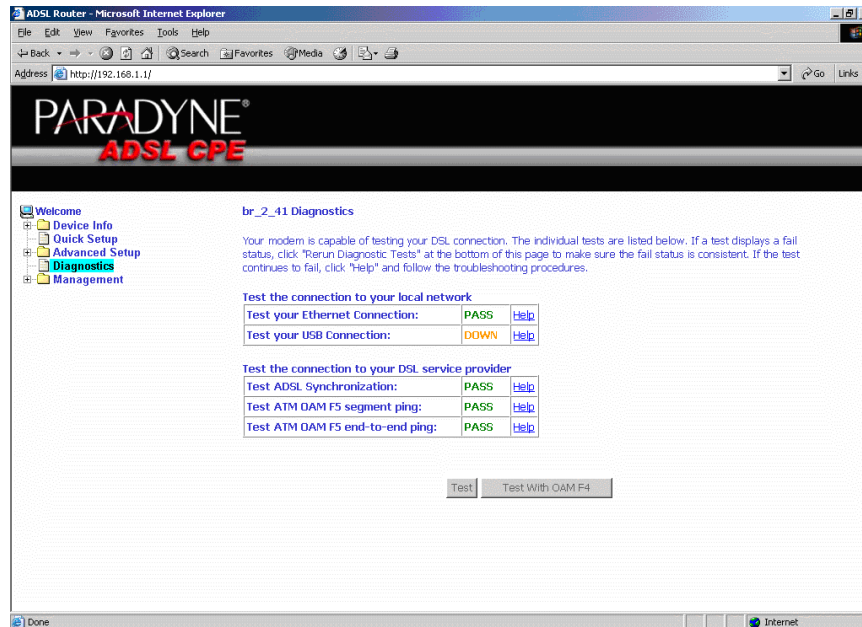


Figure 6-1. Diagnostics



---

# Management

# 7

---

## Saving and Restoring the Configuration

The configuration of your router can be backed up to a file, and also can be restored from a file. You can also restore the router to its factory default configuration.

## Backing Up Configuration Settings

To back up your settings, select Management -> Settings -> Backup Settings.

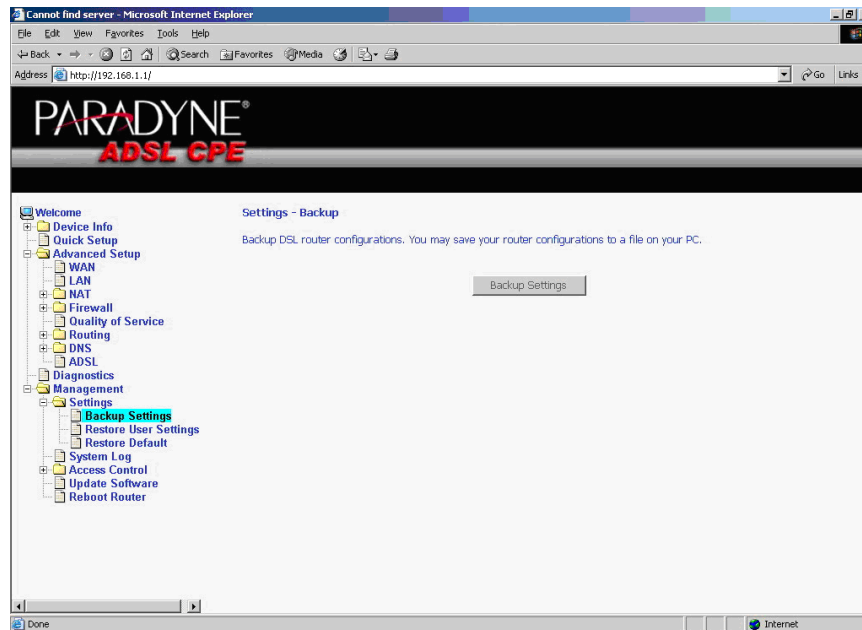
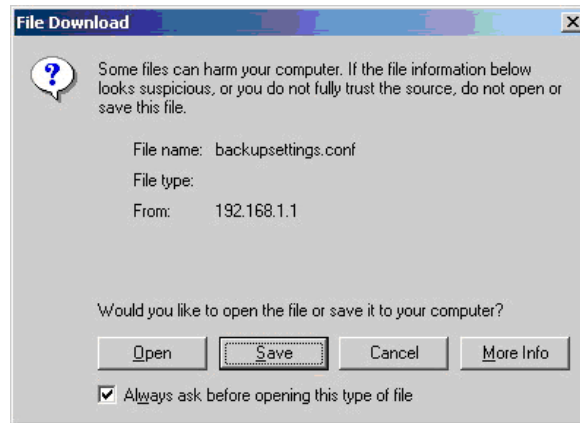


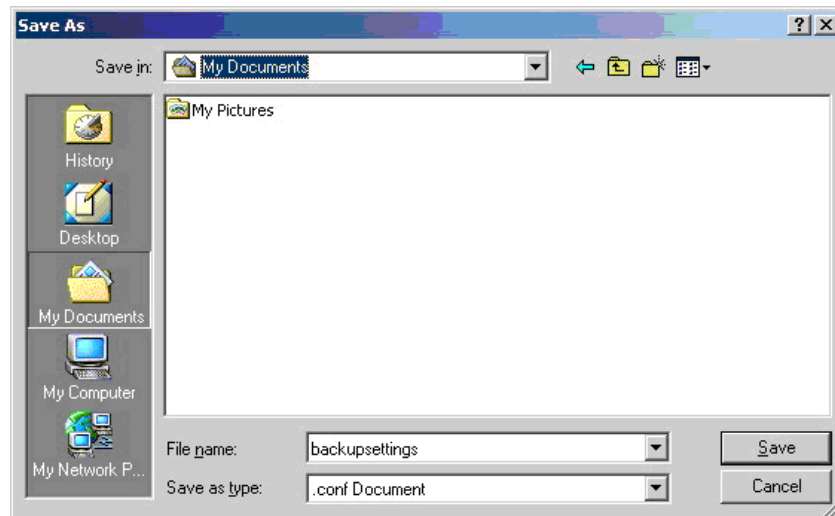
Figure 7-1. Back Up Settings Screen

Verify that you would like to save the file.



**Figure 7-2. Backup Settings Upload Confirmation**

Select the location where you want to save the file.



**Figure 7-3. Backup Settings File Location**



## Restoring Configuration Settings

To restore saved settings, select Management -> Settings -> Restore User Settings.

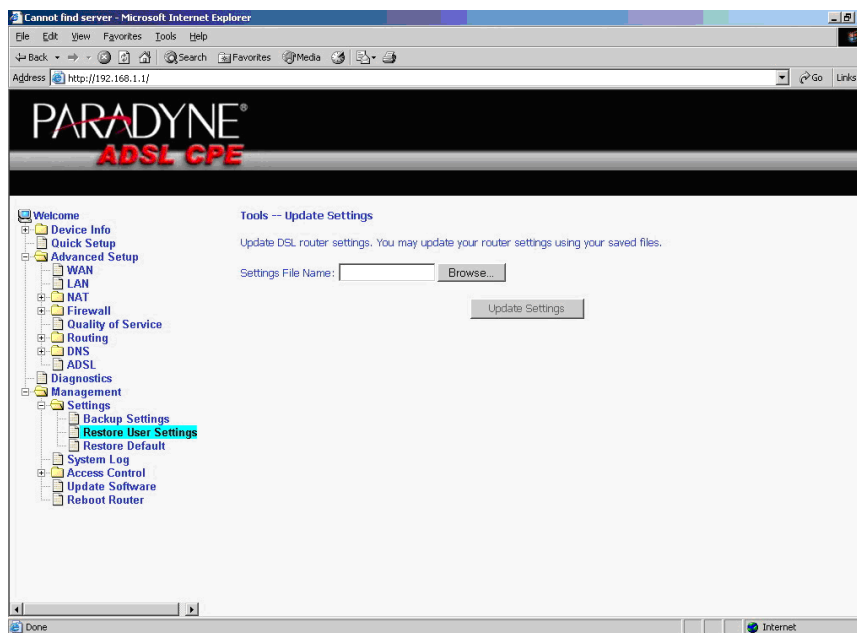


Figure 7-4. Restore User Settings Screen

Select the backup file you want to restore and click on Update Settings.

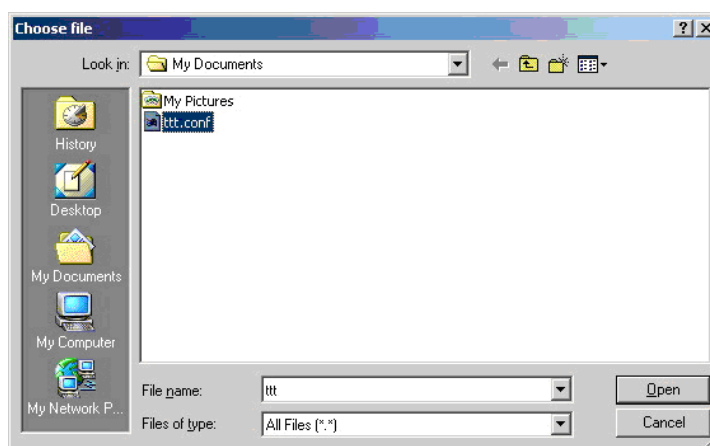


Figure 7-5. Restore Settings File Location

The router will restore settings and reboot to activate the restored settings.

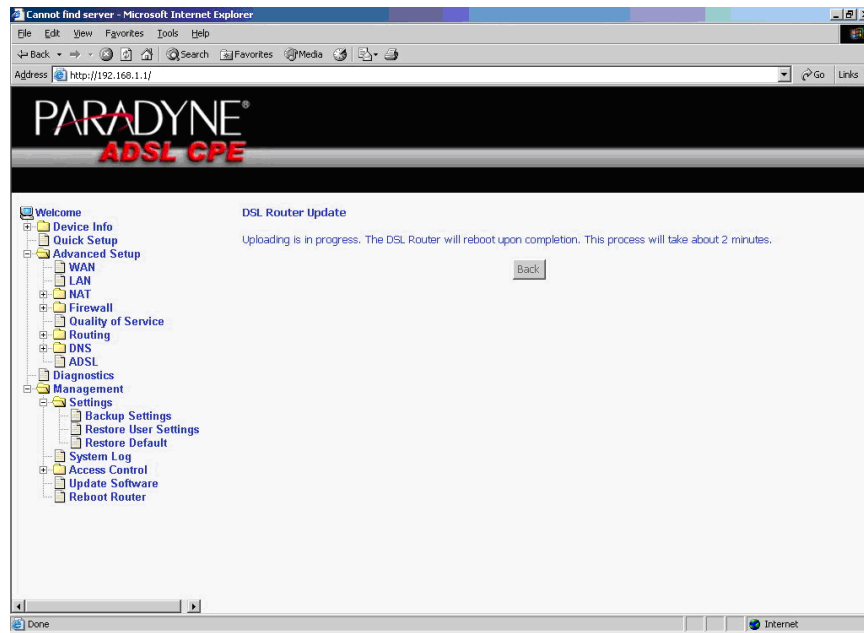


Figure 7-6. Upload in Progress Screen

## Restoring Default Settings

Restore Default will erase all current settings and restore the router to factory default settings.

To restore the router to factory default settings, select Management -> Settings -> Restore Default.

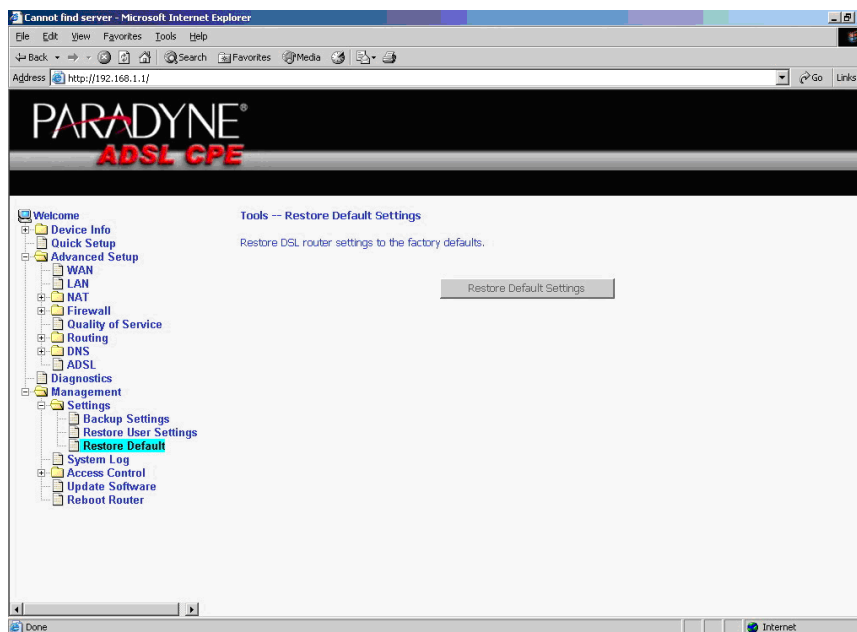


Figure 7-7. Restore Default Settings Screen

Reply OK to the confirmation dialog.

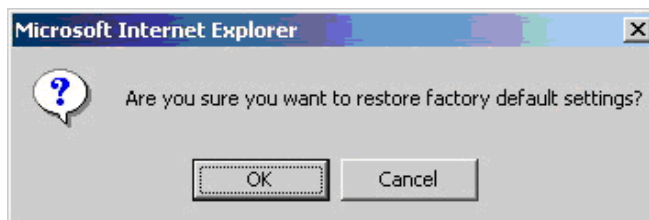


Figure 7-8. Restore Default Confirmation Dialog

The router will restore the default settings and reboot.

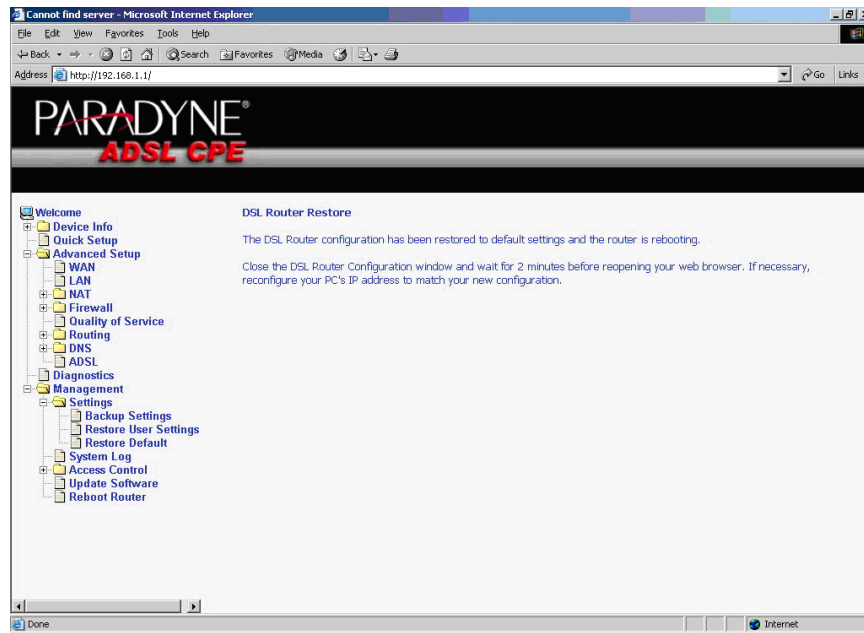
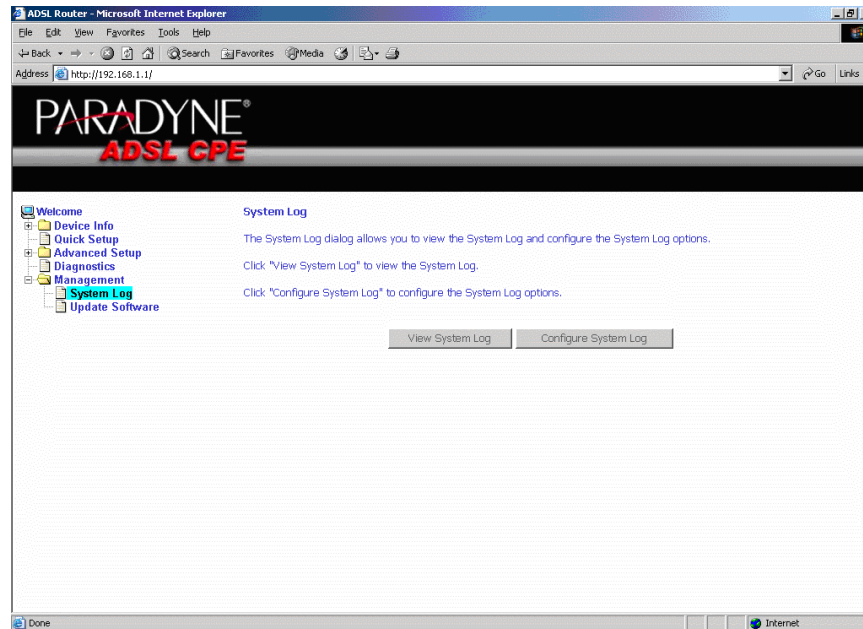


Figure 7-9. Restore Default Settings Reboot

## System Log

The System Log dialog allows you to view the System Log and configure the System Log options.



**Figure 7-10. System Log**

## View System Log

Click on the "View System Log" button to check the log file.

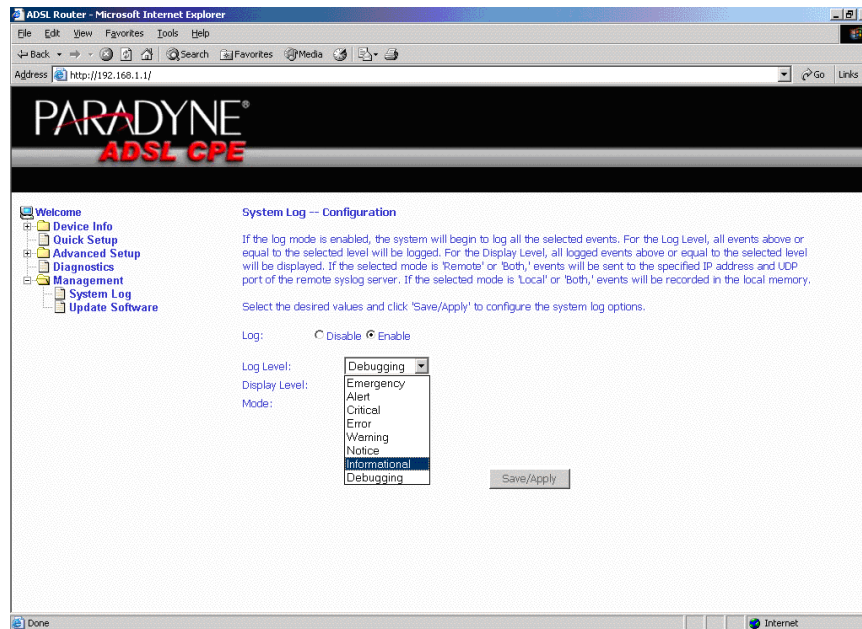
System Log			
Date/Time	Facility	Severity	Message
1st day 00:36:43	user	crit	klogd: OAM loopback response not received on VPI/VCI 0/4.
1st day 00:36:43	user	crit	klogd: OAM loopback response not received on VPI/VCI 0/3.
1st day 00:36:43	user	crit	klogd: ADSL link up, interleaved, us=64, ds=1024
1st day 00:36:43	user	crit	klogd: ADSL G.992 message exchange
1st day 00:36:43	user	crit	klogd: ADSL G.992 channel analysis
1st day 00:36:43	user	crit	klogd: ADSL G.992 started
1st day 00:36:43	user	crit	klogd: ADSL G.994 training
1st day 00:36:43	user	crit	klogd: ADSL link down
1st day 00:36:43	user	crit	klogd: ADSL G.994 training
1st day 00:36:43	user	crit	klogd: ADSL link down
1st day 00:36:43	user	crit	klogd: OAM loopback response not received on VPI/VCI 0/4.
1st day 00:36:43	user	crit	klogd: OAM loopback response not received on VPI/VCI 0/3.
1st day 00:36:43	user	crit	klogd: OAM loopback response not received on VPI/VCI 0/33.
1st day 00:36:43	user	crit	klogd: OAM loopback response not received on VPI/VCI 0/33.
1st day 00:36:43	user	crit	klogd: ADSL link up, interleaved, us=64, ds=1024
1st day 00:36:43	user	crit	klogd: ADSL G.992 message exchange
1st day 00:36:43	user	crit	klogd: ADSL G.992 channel analysis
1st day 00:36:43	syslog	emerg	BCM96345 started: BusyBox v0.60.4 ( )

**Figure 7-11. View System Log**

## Configure System Log

If the log is enabled, the system will log selected events: Emergency, Alert, Critical, Error, Warning, Notice, Informational, and Debugging. All events above or equal to the selected log level will be logged and displayed.

If the selected mode is "Remote" or "Both", events will be sent to the specified IP address and UDP port of a remote system log server. If the selected mode is "Local" or "Both", events will be recorded in the local memory.

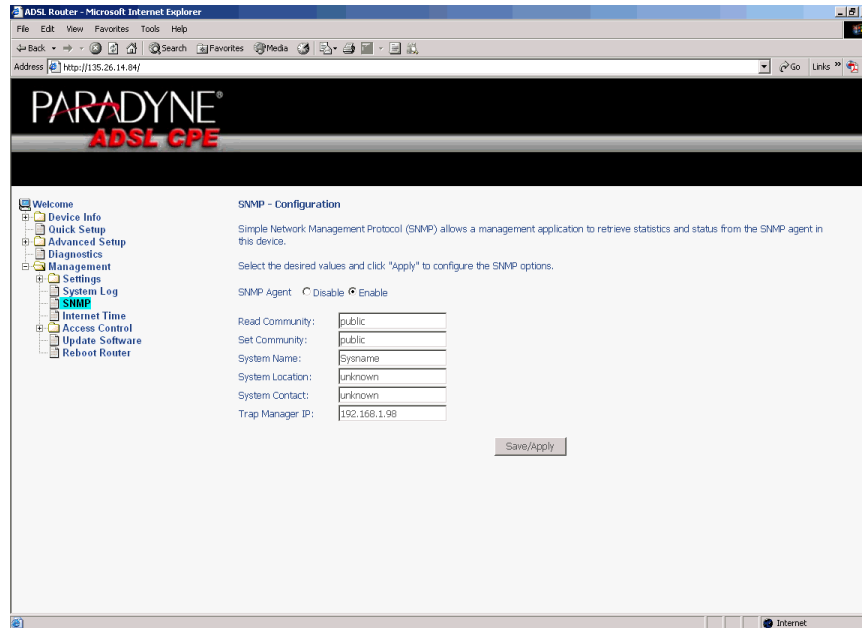


**Figure 7-12. System Log Configuration**

Select the desired values and click on the "Save/Apply" button to configure the system log options.

## SNMP

Simple Network Management Protocol (SNMP) allows a management application to retrieve statistics and status from the SNMP agent in the router. Use the SNMP screen to set up parameters for SNMP access.



**Figure 7-13. SNMP Screen**

Select the desired values and click on Save/Apply to configure the SNMP options.



## Internet Time

Use the Internet Time screen to specify whether the router uses Simple Network Time Protocol (SNTP) to obtain the time of day from SNTP servers on the Internet.

To set up the router to obtain time from an SNTP server:

1. Select “Automatically synchronize with Internet time servers”. The SNTP fields appear.

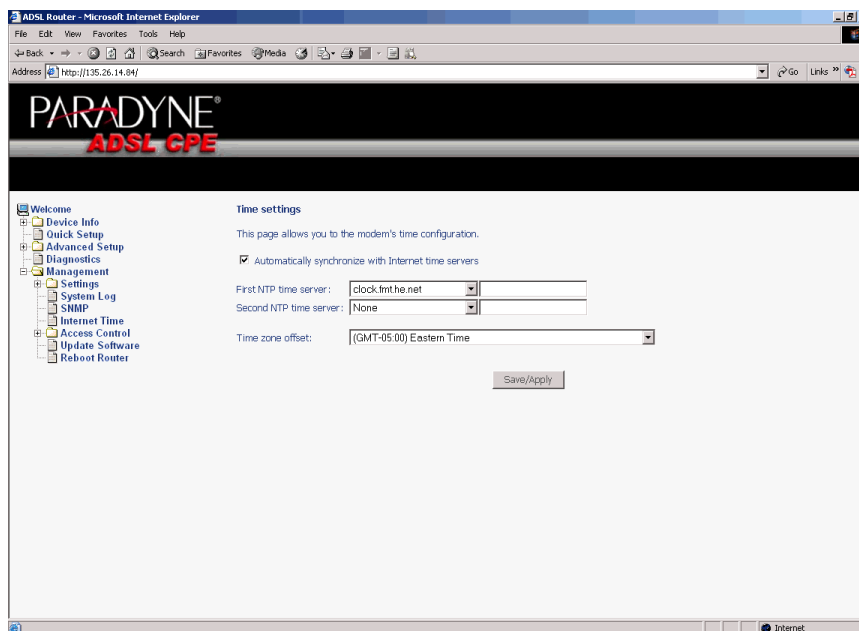


Figure 7-14. Internet Time Screen

2. Select SNTP servers.
3. Specify the time zone offset for your router's location.
4. Click on Save/Apply.

## Access Control – Services

You can enable or disable some services of your router by LAN or WAN. If no WAN connection is defined, only the LAN side can be configured.

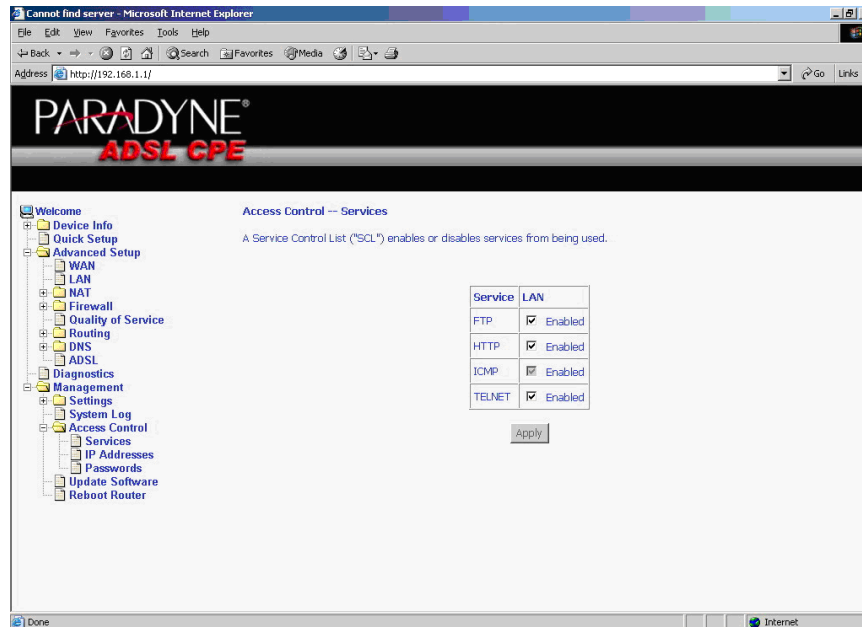


Figure 7-15. Services Setup

If a WAN connection is defined, services of both the LAN side and WAN side can be configured.

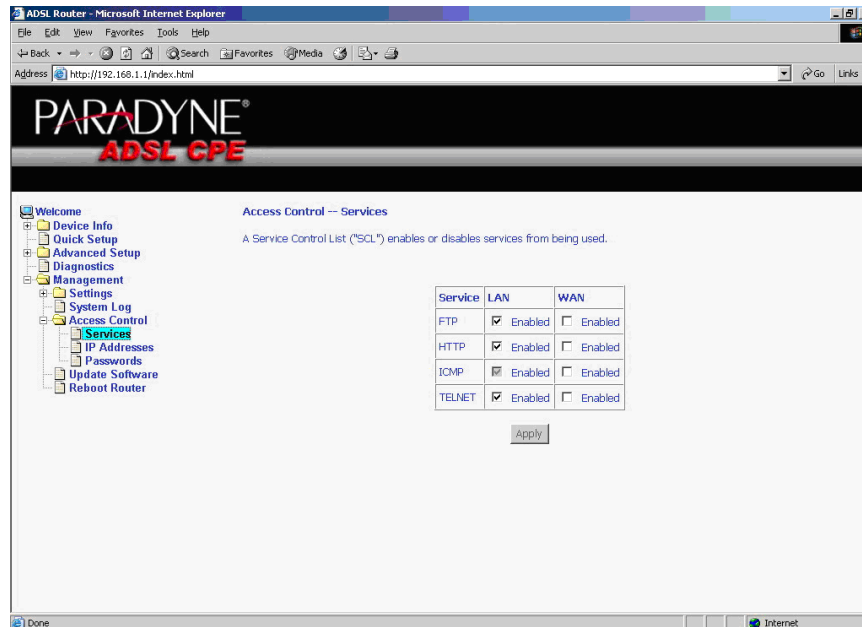


Figure 7-16. Services Setup for LAN and WAN

## Access Control – IP Addresses

Web access to the router can be limited when Access Control Mode is enabled. The IP addresses of allowed hosts can be added using Access Control -> IP Address.

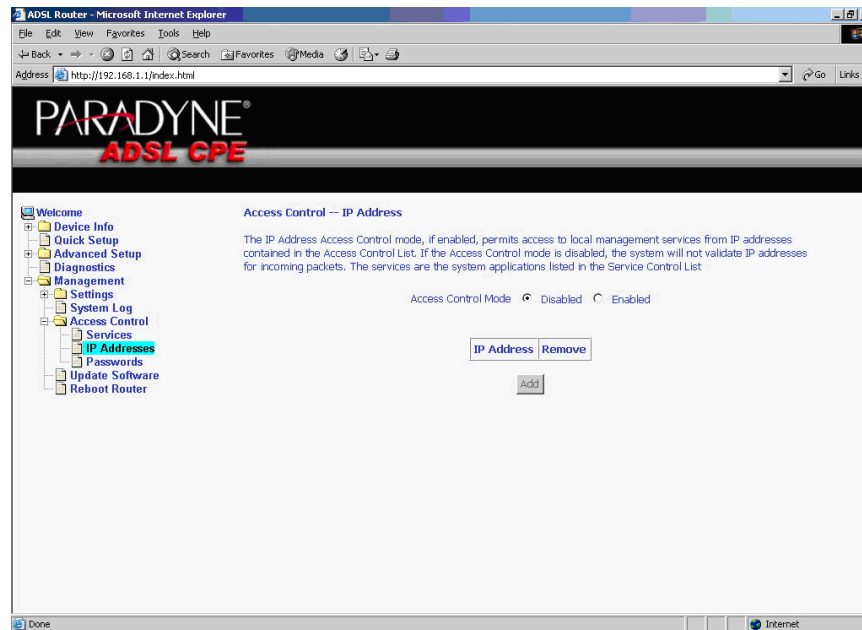


Figure 7-17. IP Address Setup

First, add the IP address to the IP address list.

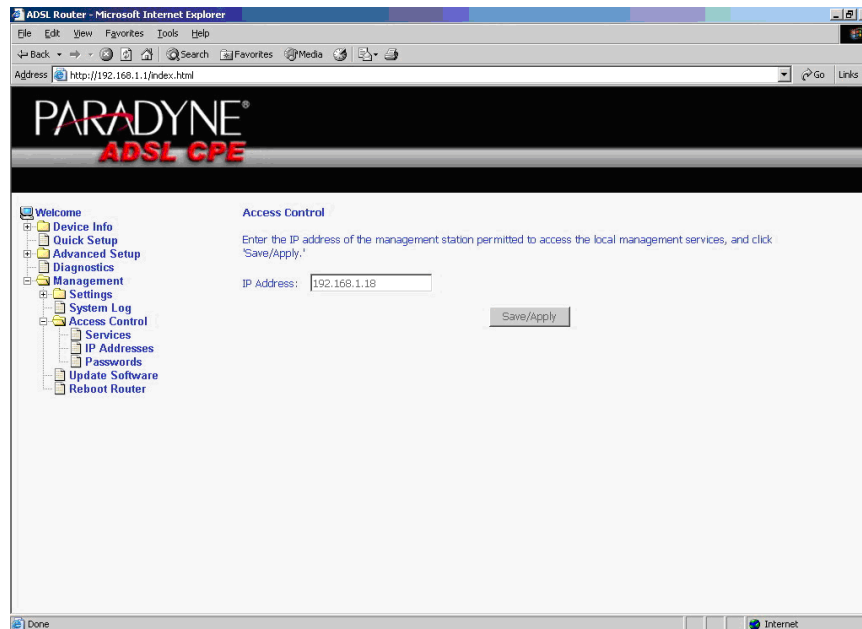


Figure 7-18. Access Control – IP Address Add Screen

Then select "Enabled" to enable Access Control Mode.

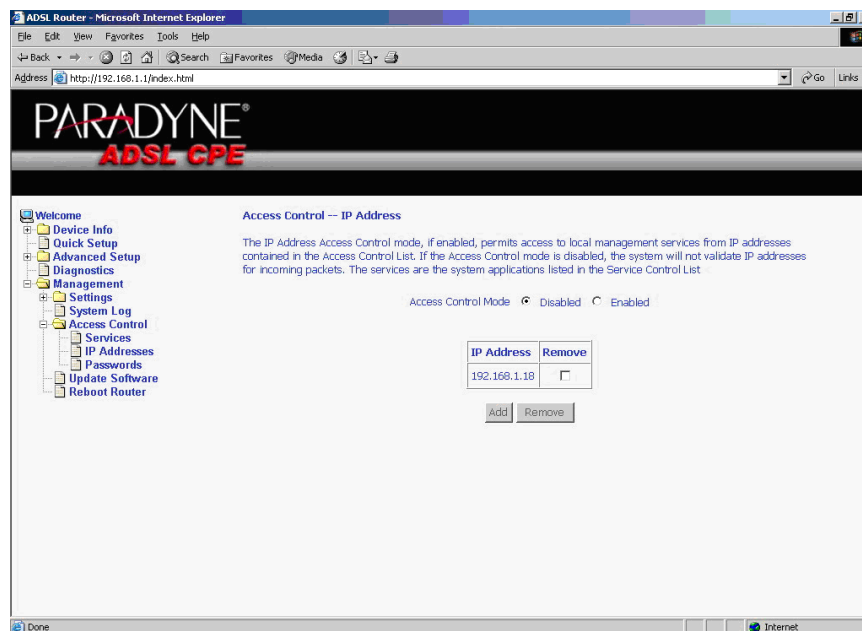


Figure 7-19. Access Control – IP Address Enable or Disable

## Access Control – Passwords

Use Access Control -> Passwords to change a password. Select an account and enter the current password and the new password. Then click on Save/Apply.

## Update Software

If your ISP releases new software for this router, follow these steps to perform an upgrade.

1. Obtain an updated software image file from your ISP.
2. Enter the path to the image file location or click on the "Browse" button to locate the image file.
3. Click on the Update Software button once to upload the new image file.

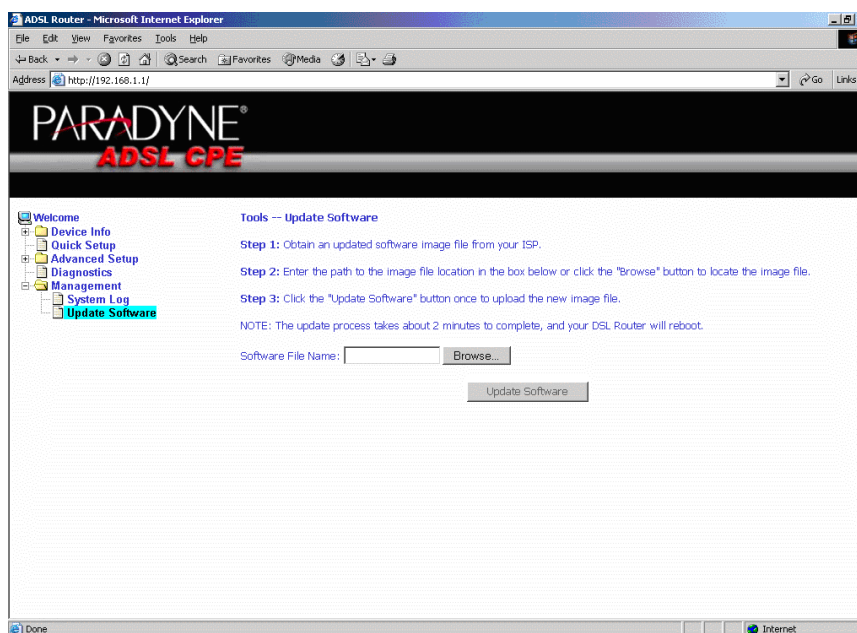


Figure 7-20. Update Software

### Note

The update process takes about two minutes to complete, and your router will reboot automatically.

## Reboot Router

Select Management -> Reboot Router to reboot the router using the web interface. The router will save the current configuration and reboot itself using the new configuration. The rebooting process takes about two minutes to complete.

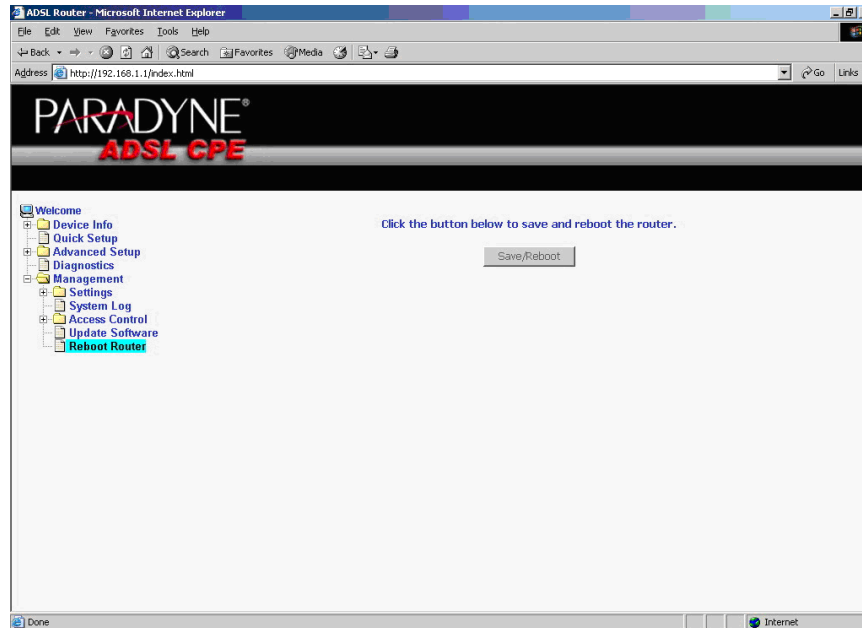


Figure 7-21. Reboot Router Screen

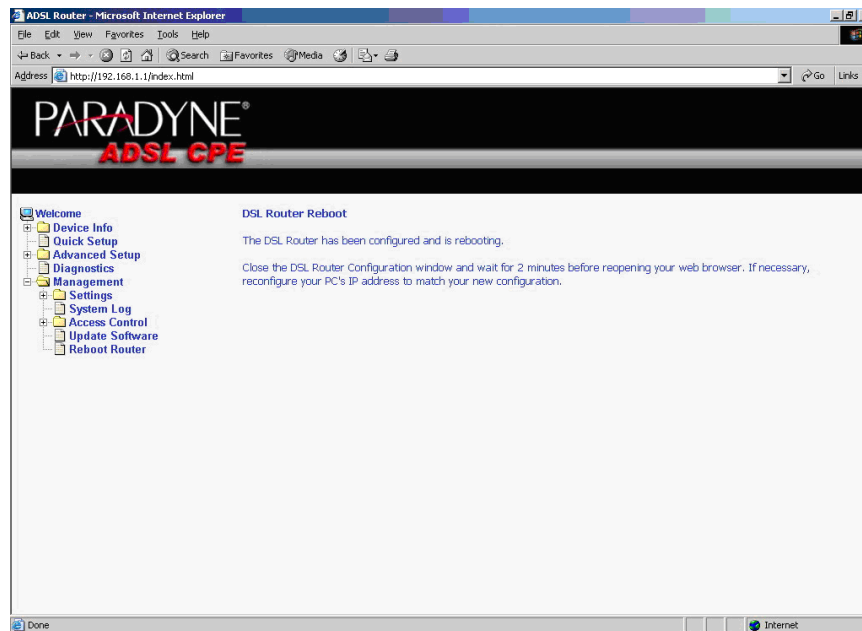


Figure 7-22. Reboot In Progress Screen







---

# Specifications



---

Specifications are subject to change without notice.

**Table A-1. 6211-I1 Specifications**

<b>Specification</b>	<b>Criteria</b>
Environment	Operating Temperature: 32° F to 104° F (0° C to 40° C) Storage Temperature: -4° F to 149° F (-20° C to 65° C) Humidity: 5% to 95%, non-condensing
Interfaces	DSL Line: RJ11 Phone (if present): RJ11 (with integrated phone filter) Ethernet: 10/100BaseT, RJ45 USB 1.1
Power	100 VAC, 50 Hz 110 VAC, 60 Hz 220VAC, 50/60 Hz
Protocol Support	ANSI T1.413 (Full Rate ADSL) ITU G.992.1 (DMT) ITU G.992.2 (G.lite) ITU G.992.3 (ADSL2) ITU G.992.5 (ADSL2+) ITU G.994.1 (G.hs) ITU G.997.1
Size	1.2" High x 6" Wide x 4.4" Deep (3.0 cm High x 15.2 cm Wide x 11.8 cm Deep)
Weight (Shipping)	1.5 lbs (0.7 kg)



---

# Index

---

## A

- About This Guide, v
- Access Control
  - IP Addresses, 7-13
  - Passwords, 7-15
  - Services, 7-12
- ADSL, 5-26
  - BER Test, 3-7
  - Line connection, 2-1
  - Statistics, 3-6
- Advanced Settings, DSL, 5-28
- Advanced Setup, 5-1
- ARP, 3-9
- ATM
  - PVC Configuration, 5-2
  - Statistics, 3-5

## B

- Backing Up Configuration Settings, 7-1
- BER Test, 3-7
- Bridge Service, 5-4
- Bridging groups, 5-30

## C

- Cables
  - Installing, 2-1
- Capability, 5-27
- CE Marking, B
- Configuring
  - PC, 2-7
  - System Log, 7-9
- Connecting Hardware, 2-1
- Connection Type, 5-3

## D

- Default Gateway, 5-22
- Default IP Address, 2-7
- Definitions, 1-1
- Device Information, 3-1
- Diagnostics, 6-1
- Dimensions, A-1
- DMZ Host, 5-12
- DNS, 5-24
  - Dynamic, 5-25

## Document

- Feedback, A
- Purpose and Intended Audience, v
- Summary, v
- Domain Name Server, 5-24
- Dynamic DNS, 5-25

## E

- EMI Notice
  - Canada, D
  - Japan, D
- Environment, A-1

## F

- FCC Part 15 Declaration, B
- Features, 1-1
- Firewall, 5-13
  - Explained, A-1
  - MAC Filtering, 5-17
- Firmware Update, 7-15
- Front Panel, 1-3

## G

- Gateway, Default, 5-22

## H

- Hardware
  - Connections, 2-1
  - Installation, 2-1

## I

- Important Safety Instructions, B
- Installing
  - Hardware, 2-1
  - USB Driver, 2-4
- Interfaces, A-1
- Internet
  - Restricting access, 5-19
- Internet Time, 7-11
- Introduction, 1-1
- IP Address
  - Access Control, 7-13
  - Of Router, 2-7

## IP Filtering

Incoming, 5-15

Outgoing, 5-13

**J**

Japan Notices, D

**L**

Line port, 2-1

Local Area Network (LAN)

Setup, 5-7

Statistics, 3-3

Logging In, 3-1

**M**

MAC Filtering, 5-17

Management, 7-1

Mapping ports, 5-30

Modulation Methods, 5-26

**N**

NAT, 5-8

Notice

to Users of the Canadian Telephone Network, D

to Users of the United States Telephone Network, C

**O**

Operating Environment, A-1

**P**

Parental Control, 5-19

Parts List, 1-2

Password

Access Control, 7-15

Default, 2-12

PC connection, 2-1

PC Setup, 2-1

Phone

Line Pair, 5-27

Port, 2-1

Port Mapping, 5-30

Port Triggering, 5-10

Power

Specifications, A-1

Product-Related Documents, vi

Protocols Supported, A-1

PVC

Adding, 5-2

Configuring, 5-2

Detecting, 4-1

**Q**

Quality of Service, 5-4, 5-20

Quick Setup, 4-1

**R**

Rear Panel, 1-4

Reboot Router, 7-16

Restoring

Configuration Settings, 7-3

Default Settings, 7-5

Restricting access to Internet, 5-19

RIP, 5-24

Route status, 3-8

Routing

Default Gateway, 5-22

RIP, 5-24

Static Route, 5-23

**S**

Sales, Service, and Training Information, A

Saving and Restoring Configuration, 7-1

Services

Access Control, 7-12

Shipping Weight, A-1

Size, A-1

SNTP, 7-11

Specifications, A-1

Static Route, 5-23

Statistics

ADSL, 3-6

ATM, 3-5

LAN, 3-3

WAN, 3-4

Status

ARP, 3-9

Route, 3-8

Summary, 3-1

WAN, 3-2

System Log, 7-7

Configuring, 7-9

System Requirements, 1-1

**T**

Test

BER, 3-7

DSL Connection, 6-1

Time, 7-11

Tone Selection, 5-29

Trademarks, A

**U**

Update Software, 7-15

**USB**

- connection, 2-1
- driver, 2-4

**User Name**

- Default, 2-12

**V**

View System Log, 7-8

Virtual Servers, 5-8

**W**

WAN, 3-2, 5-1

- Setup, 5-5
- Statistics, 3-4
- Status, 3-2

Warranty, A

**Web Interface**

- Home Page, 2-13
- Using, 3-1

Weight, A-1

Windows 2000, 2-9

Windows 95, 2-10

Windows 98, 2-10

Windows ME, 2-9

Windows NT, 2-11

Windows XP, 2-7



## Free Manuals Download Website

<http://myh66.com>

<http://usermanuals.us>

<http://www.somanuals.com>

<http://www.4manuals.cc>

<http://www.manual-lib.com>

<http://www.404manual.com>

<http://www.luxmanual.com>

<http://aubethermostatmanual.com>

Golf course search by state

<http://golfingnear.com>

Email search by domain

<http://emailbydomain.com>

Auto manuals search

<http://auto.somanuals.com>

TV manuals search

<http://tv.somanuals.com>