



ipRocketLink™ Model 3087 **Serial G.SHDSL Bridge/Router**

Quick Start Guide



Document Number: 03330U7-003 Rev. A
Part Number: 07M3087-QS
Revised: June 29, 2006

Sales Office: +1 (301) 975-1000
Technical Support: +1 (301) 975-1007
E-mail: support@patton.com
WWW: www.patton.com



- This device contains no user serviceable parts. The equipment shall be returned to Patton Electronics for repairs, or repaired by qualified service personnel.
- **Mains Voltage:** Do not open the case when the power cord is attached. Line voltages are present within the power supply when the power cords are connected. The mains outlet that is utilized to power the device shall be within 10 feet (3 meters) of the device, shall be easily accessible, and protected by a circuit breaker.
- For AC powered units, ensure that the power cable used meets all applicable standards for the country in which it is to be installed, and that it is connected to a wall outlet which has earth ground.
- For units with an external power adapter, the adapter shall be a listed Limited Power Source.
- Hazardous network voltages are present in WAN ports regardless of whether power to the unit is ON or OFF. To avoid electric shock, use caution when near WAN ports. When detaching the cables, detach the end away from the device first.
- Do not work on the system or connect or disconnect cables during periods of lightning activity.

1.0 Power up the Bridge/Router



The interconnecting cables shall be acceptable for external use and shall be rated for the proper application with respect to voltage, current, anticipated temperature, flammability, and mechanical serviceability.

Your ipRocketLink comes with one of the following power supply options:

- Internal AC power supply with detachable power cord
- External AC adapter with detachable power cord

1.1 Models with internal AC power supply

1. Insert the female end of the AC power cord into the internal power supply connector.
2. Connect the male end of the power cord into an AC power outlet (mains) (100-240 V AC).

1.2 Models with external AC adaptor

1. Connect the female plug of the AC power cord to the AC adaptor provided.
2. Connect the barrel-type connector of the AC adaptor to the barrel-type power jack on the ipRocketLink.

3. Insert the male plug of the AC power cord into an AC power outlet (mains) (100-240 V AC).

1.3 Power-up indication

The *Power* LED blinks as the ipRocketLink is powering up. When the *Power* LED stops blinking and remains lit, the ipRocketLink is ready for you to configure.

2.0 Configure the IP address

The ipRocketLink is shipped with a factory-configured IP address to the *Ethernet* LAN port (green outline). The IP address is **192.168.200.10 / 24**. In most cases, you must change the address to be on the same subnet as your PC, as described in the procedures below. If you are not sure which IP address to use for your installation, contact your network administrator.

2.1 Connect a PC and log in

1. Using the included combination RS-232/Ethernet cable and DB9-RJ45 adaptor, connect a PC's serial port to the ipRocketLink's *Console* port (see figure 1).

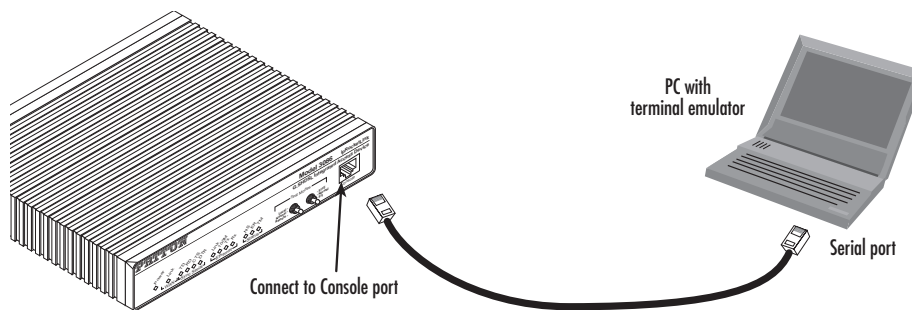


Figure 1. Connecting the ipRocketLink console port to the PC's RS-232 serial port

2. Start a HyperTerminal (or similar terminal emulation program) session on the PC using the following settings:

9600 bps, 8 data bits, 1 stop bit, no parity, no flow control

3. Log into the ipRocketLink using the factory-default login username and password:

```
Login: superuser  
Password: superuser  
Login successful
```

2.2 Modify the IP address

1. Display current IP interface settings for the ipRocketLink *Ethernet* LAN port.

```
→ ip list interfaces <enter>
```

```
IP Interfaces:
ID | Name | IP Address | DHCP | Transport
---|-----|-----|-----|-----
1  | ip1  | 192.168.200.10 | disabled | <bridge>
```

2. Modify the IP address for the LAN port according to your network requirements.

```
→ ip set interface ip1 ipaddress 10.10.10.5 255.255.255.0
```

Note The above IP address is only an example. You must choose an IP address on the same subnet as your PC.

3. Verify the new address is correct and save it in system memory.

```
→ ip list interfaces <enter>
→ system config save <enter>
→
```

3.0 Connect to the local IP network

Now you can connect the ipRocketLink to your local IP network and complete the remaining configuration from your PC using a standard web browser.

Connect the ipRocketLink's *Ethernet* port (green) to the same Ethernet segment as your PC (see **figure 2**). The front-panel *Ethernet Link* LED should turn on. If it does not turn on, press the rear-panel MDI-X switch so that the *Ethernet Link* LED illuminates.

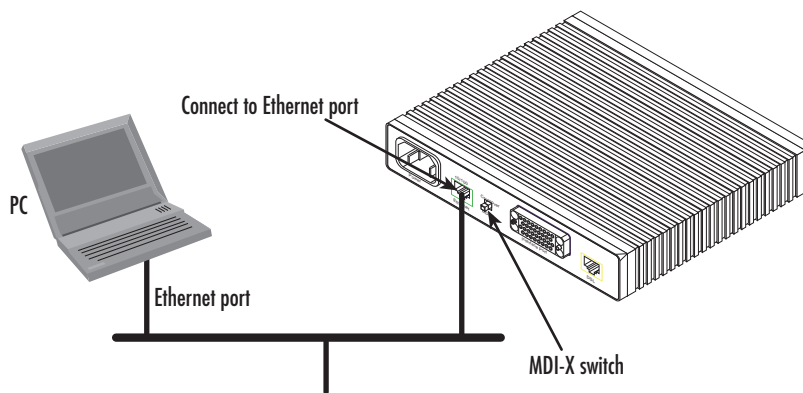


Figure 2. Connecting the ipRocketLink to the local IP network

You can check the connection with the ping command. For the example shown in , you would ping 10.10.10.5 from a PC on the IP network.

4.0 Log onto the GUI web management page

You will now access the web management graphical user interface (GUI) to configure the ipRocketLink using a standard web browser (such as Netscape or Internet Explorer).

1. At your PC, open a web browser and enter the IP address you assigned to the ipRocketLink's Ethernet LAN port in step 2 of 2.2 "Modify the IP address".
2. Log into the web management home page using the username *superuser* and the password *superuser*. (See figure 3.)

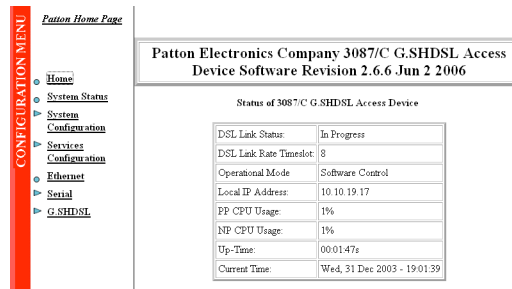


Figure 3. Model 3087 web management home page

5.0 Connect to the G.SHDSL Port

1. Obtain single-twisted-pair cable with an RJ-11 plug connector at each end.
2. Plug one end of the cable into the (yellow) RJ-11 socket (labeled *DSL*) on the ipRocketLink Integrated Access Device.
3. Plug the other end of the cable into the RJ-11 wall socket that provides your G.SHDSL service.
4. When a DSL link is established, the front-panel *WAN LINK* LED will turn on.

6.0 Connect the serial port

Your ipRocketLink is equipped with one of the following serial WAN ports for connection to an NTU:

- V.35 (M/34 or DB-25) – Model 3087/RIC/EUI
- X.21 (DB-15) – Model 3087/RID/EUI
- T1/E1 (RJ-48C and dual BNC) – Model 3087/RIC/EUI

Connect the serial cable to the ipRocketLink serial port as follows:

1. Attach the male connector of the serial cable to the female serial connector on the 3087.
2. Attach the other end of the cable to the serial connector on local device's serial port.

Note The 3087's V.35 interface is wired as a DCE. No DTE configuration is possible. If you are directly connecting the 3087's V.35 interface to a third-party equipment that cannot be configured as a DTE, you must use a tail-circuit cable. You can purchase a tail-circuit cable from a datacom-supply vendor. A tail-circuit cable will cross-over the necessary V.35 signals so that the two DCE interfaces can communicate.

Note The 3087's X.21 interface is default configured as a DCE. Changing the DTE/DCE strap internally can set the configuration for DTE. The 3087's X.21 interface requires a cable with a male DB-15 connector.

7.0 Additional Information

Refer to the *Model 3201, 3086 & 3087 Getting Started Guide* located on the CD-ROM shipped with your 3087 Bridge/Router and available online at www.patton.com/manuals. For detailed information about:

- Installing, configuring, operating, and troubleshooting.
- Warranty, trademark & compliance

The CD-ROM also includes many freeware and shareware tools, including TFTP servers, and Telnet clients.

A.0 Customer and Technical Support

Toll-Free VoIP support: call sip:support@patton.com with a VoIP SIP client

Online support: www.patton.com

E-mail support: support@patton.com — answered within 1 business day

Telephone support:

- Standard: +1 (301) 975-1007 (USA), Monday–Friday: 8:00 am to 5:00 pm EST (1300 to 2200 UTC/GMT)
- Alternate: +41 (0)31 985 25 55 (Switzerland), Monday–Friday: 8:00 am to 5:00 pm CET (0900 to 1800 UTC/GMT)

Fax: +1 (253) 663-5693 (USA) or +41 (0)31 985 25 26 (Switzerland)

B.0 Appendix – Key factory default parameters

Key factory default parameters.

Parameter	Default	Default	Default
Ethernet port IP address	192.168.200.10	255.255.255.0	-
G.SHDSL port	512 kbps	Annex B	Remote
Serial port	512 kbps	Internal clock mode	-
WAN	Static IP address type	-	-
DHCP server	Disabled	-	-
DHCP relay	Disabled	-	-
Security	Disabled	-	-
SNTP client	Unicast mode - disabled	Anycast mode - disabled	Broadcast mode - enabled

C.0 Compliance Information

C.1 Compliance

EMC Compliance:

- FCC Part 15, Class A
- EN55022, Class A
- EN55024

Safety Compliance:

- UL 609501-1/CSA C22.2 NO. 60950-1
- IEC/EN 60950-1
- AS/NZS 60950-1

PSTN Regulatory:

- FCC Part 68
- CS-03
- TBR 12 & 13 (E1 only)
- AS/ACIF S016:2001 (E1 only)
- AS/ACIF S043:2003

C.2 Radio and TV interference (FCC Part 15)

This equipment generates and uses radio frequency energy, and if not installed and used properly — that is, in strict accordance with the manufacturer's instructions — may cause interference to radio and television reception.

This equipment has been tested and found to comply with the limits for a Class A computing device in accordance with specifications in Subpart B of Part 15 of FCC rules, which are designed to provide reasonable protection from such interference in a commercial installation.

However, there is no guarantee that interference will not occur in a particular installation.

If the equipment causes interference to radio or television reception, which can be determined by disconnecting the cables, try to correct the interference by one or more of the following measures: moving the computing equipment away from the receiver, re-orienting the receiving antenna, and/or plugging the receiving equipment into a different AC outlet (such that the computing equipment and receiver are on different branches).

C.3 EC Declaration of Conformity

(See section C.4 "EG-Konformitätserklärung" for German version.)

Product Description: ipRocketLink 3087

The products described above in the form as delivered are in conformity with the provisions of the following European Directive:

R&TTE Directive 1999/5/EC

Guidelines of the European Parliament and the Committee for the Harmonization of the Legal Regulations of the Member States concerning radio equipment and telecommunications terminal equipment and the mutual recognition of their conformity.



The safety advice in the documentation accompanying the products shall be obeyed.
The conformity to the above directive is indicated by the CE sign on the device.

The signed Declaration of Conformity can be downloaded from www.patton.com/certifications/.

C.4 EG-Konformitätserklärung

(see section C.3 "EC Declaration of Conformity" for English version)

Produktbezeichnung: ipRocketLink 3087

Die bezeichneten Produkte stimmen in der von uns in Verkehr gebrachten Ausführung mit den Vorschriften folgender Richtlinie überein:

R&TTE 1999/5/EG

Richtlinie des europäischen Parlaments und des Rates zur Angleichung der Rechtsvorschriften der Mitgliedstaaten über Funkanlagen und Telekommunikations-Endeinrichtungen und die gegenseitige Anerkennung ihrer Konformität.



Die Sicherheitshinweise in der mitgelieferten Produktdokumentation sind zu beachten.
Die Konformität mit der oben erwähnten Richtlinie wird durch das CE-Zeichen auf dem Gerät bestätigt.

Die unterzeichnete Konformitätserklärung kann heruntergeladen werden von: www.patton.com/certifications/.

3.5 FCC Part 68 (ACTA) Statement

This equipment complies with Part 68 of FCC rules and the requirements adopted by ACTA. On the bottom side of this equipment is a label that contains — among other information — a product identifier in the format US: AAAEQ##TXXXX. If requested, this number must be provided to the telephone company.

The method used to connect this equipment to the premises wiring and telephone network must comply with the applicable FCC Part 68 rules and requirements adopted by the ACTA.

If this equipment causes harm to the telephone network, the telephone company will notify you in advance that temporary discontinuance of service may be required. But if advance notice isn't practical, the telephone company will notify the customer as soon as possible. Also, you will be advised of your right to file a complaint with the FCC if you believe it is necessary.

The telephone company may make changes in its facilities, equipment, operations or procedures that could affect the operation of the equipment. If this happens, the telephone company will provide advance notice in order for you to make necessary modifications to maintain uninterrupted service.

If trouble is experienced with this equipment, for repair or warranty information, please contact our company. If the equipment is causing harm to the telephone network, the telephone company may request that you disconnect the equipment until the problem is resolved.

Connection to party line service is subject to state tariffs. Contact the state public utility commission, public service commission or corporation commission for information.

3.6 Industry Canada Notice

This equipment meets the applicable Industry Canada Terminal Equipment Technical Specifications. This is confirmed by the registration number. The abbreviation, IC, before the registration number signifies that registration was performed based on a Declaration of Conformity indicating that Industry Canada technical specifications were met. It does not imply that Industry Canada approved the equipment.

This Declaration of Conformity means that the equipment meets certain telecommunications network protective, operational and safety requirements. The Department does not guarantee the equipment will operate to the user's satisfaction. Before installing this equipment, users should ensure that it is permissible to be connected to the facilities of the local telecommunications company. The equipment must also be installed using an acceptable method of connection. In some cases, the company's inside wiring associated with a single line individual service may be extended by means of a certified connector assembly (telephone extension cord). The customer should be aware that compliance with the above condition may not prevent degradation of service in some situations. Repairs to some certified equipment should be made by an authorized maintenance facility designated by the supplier. Any repairs or alterations made by the user to this equipment, or equipment malfunctions, may give the telecommunications company cause to request the user to disconnect the equipment. Users should ensure for their own protection that the ground connections of the power utility, telephone lines and internal metallic water pipe system, are connected together. This protection may be particularly important in rural areas.

Copyright statement

Copyright © 2006, Patton Electronics Company. All rights reserved.

The information in this document is subject to change without notice. Patton Electronics assumes no liability for errors that may appear in this document.

Trademarks statement

The term *ipRocketLink* is a trademark of Patton Electronics Company. All other trademarks presented in this document are the property of their respective owners.

Warranty, Trademark, & Compliance Information

For warranty, trademark and compliance information, refer to the *Models 3201, 3086 & 3087 ipRocketLink Getting Started Guide* located on the CD-ROM that came with your 3087 or available online at www.patton.com.



In accordance with the requirements of council directive 2002/96/EC on Waste of Electrical and Electronic Equipment (WEEE), ensure that at end-of-life you separate this product from other waste and scrap and deliver to the WEEE collection system in your country for recycling.

Free Manuals Download Website

<http://myh66.com>

<http://usermanuals.us>

<http://www.somanuals.com>

<http://www.4manuals.cc>

<http://www.manual-lib.com>

<http://www.404manual.com>

<http://www.luxmanual.com>

<http://aubethermostatmanual.com>

Golf course search by state

<http://golfingnear.com>

Email search by domain

<http://emailbydomain.com>

Auto manuals search

<http://auto.somanuals.com>

TV manuals search

<http://tv.somanuals.com>