

---

*RouteFinder*<sup>TM</sup> **VPN**  
Internet Security Appliance



**SOHO Internet Security Appliance  
Model RF550VPN**

**Quick Start Guide**





## Quick Start Guide

### RouteFinder Internet Security Appliance

### Model RF550VPN

**PN S000237E Revision E**

Copyright © 2003

This publication may not be reproduced, in whole or in part, without prior expressed written permission from Multi-Tech Systems, Inc. All rights reserved.

Multi-Tech Systems, Inc. makes no representations or warranties with respect to the contents hereof and specifically disclaims any implied warranties of merchantability or fitness for any particular purpose. Furthermore, Multi-Tech Systems, Inc. reserves the right to revise this publication and to make changes from time to time in the content hereof without obligation of Multi-Tech Systems, Inc. to notify any person or organization of such revisions or changes.

Revision	Date	Description
<b>A</b>	11/26/01	Initial release.
<b>B</b>	01/25/02	Changes to some screen captures. Formatting changes. Added a Configuring the PC section.
<b>C</b>	05/17/02	New examples. New screen captures. SSH IPSec Sentinel new version (v 1.3). Advanced features are now discussed in the User Guide only.
<b>D</b>	10/08/02	Changes to the Virtual Server section, Administrative Settings, and VPN Connection. Software version 4.63.
<b>E</b>	04/08/03	Software version 4.64.

#### Trademarks

The Multi-Tech logo is a trademark of Multi-Tech System, Inc. Windows is a trademark of Microsoft. All other trademarks are owned by their respective companies.

#### Headquarters

Multi-Tech Systems, Inc.  
2205 Woodale Drive  
Mounds View, Minnesota 55112  
(763) 785-3500 or (800) 328-9717  
Fax (763) 785-9874  
Internet Address: <http://www.multitech.com>

# Contents

<b>1 – Introduction and Description .....</b>	<b>1</b>
RouterFinder Documentation.....	1
RF550VPN Front Panel.....	2
RF550VPN Back Panel .....	3
<b>2 – Installation .....</b>	<b>4</b>
Safety Warnings .....	4
System Requirements .....	4
Unpacking Your RouteFinder .....	4
Cabling Your RouteFinder .....	5
<b>3 – Configuring the PC.....</b>	<b>6</b>
<b>4 – Navigating the Screens.....</b>	<b>12</b>
<b>5 – Configuring the RF550VPN.....</b>	<b>13</b>
About the Browser Interface .....	13
Start the RF550VPN Configuration.....	13
Setup Wizard.....	15
<b>6 – Technical Support.....</b>	<b>26</b>

# 1 – Introduction and Description

Welcome to the world of Internet security. Your Multi-Tech SOHO RouteFinder VPN Internet security appliance, Model RF550VPN, is ideal for the small branch office or telecommuter who needs secure access to the corporate LAN.

In addition to providing a WAN Ethernet port for DSL or cable broadband Internet access, it offers both LAN-to-LAN and client-to-LAN connectivity. The SOHO RouteFinder supports up to 5 IPSec tunnels and provides 3DES encryption with 700K bps throughput.



## RouteFinder Documentation

### The Quick Start Guide

The Quick Start Guide is a shorter version of this User Guide. It is included in printed form with your RF550VPN. Both guides are intended to be used by systems administrators and network managers. They provide the necessary information for a qualified person to unpack, cable, and configure the device for proper operation.

### The User Guide

The User Guide can be installed from the CD by clicking **Install Manuals** on the Installation screen or downloading the file from our Web site at: <http://www.multitech.com>

#### Save or Print the User Guide

Once the User Guide is displayed on screen using Adobe Acrobat Reader, you can save the .pdf file to your system or print a copy.

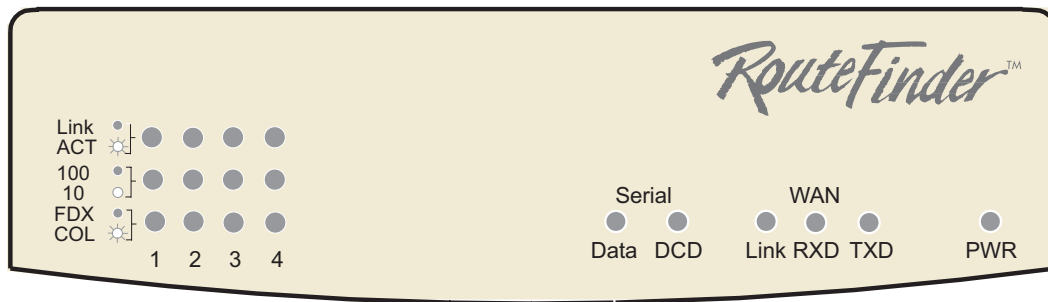
### Setup Examples and Other Helpful Documents

There are five reference documents to help you setup and use your RF550VPN. These reference guides are located on the CD that accompanies your RouteFinder and also on the Multi-Tech Web site. Check the Multi-Tech Web site occasionally as other documents may be added in the future.

### Adobe Acrobat Reader

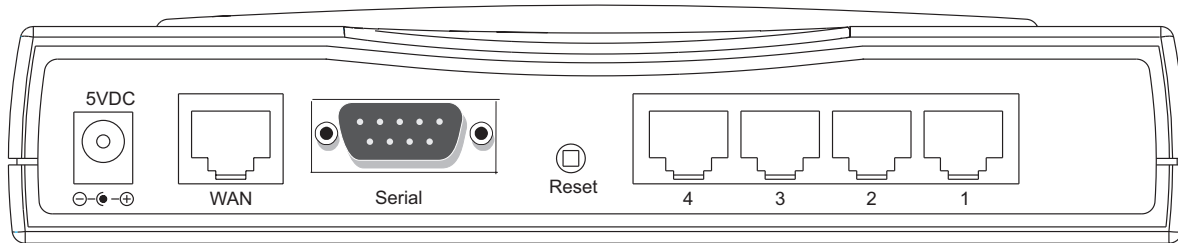
Adobe Acrobat Reader is a free program for viewing PDF formatted documents. It can be installed from the CD (click on Install Manuals and select Install Adobe Acrobat Reader).

## RF550VPN Front Panel



LEDs	Description
<b>Link ACT</b>	Lights when the LAN client is correctly connected to the Ethernet port. Blinks when there is activity on the Ethernet port.
<b>100/10</b>	Lights when the LAN client is connected at 100MB. Off when the LAN client is connected at 10MB.
<b>FDX COL</b>	Lights when the LAN client is connected as full duplex. Off when the LAN client is connected as half duplex. Blinks when there are collisions on the network.
<b>Serial Data</b>	Blinks when the Serial async port is receiving or transmitting data.
<b>Serial DCD</b>	Lights when the Serial async port is connected to a remote site.
<b>WAN Link</b>	Lights when connection to the 10BaseT WAN is established.
<b>WAN RXD</b>	Lights when the WAN port is receiving data.
<b>WAN TXD</b>	Lights when the WAN port is transmitting data.
<b>PWR</b>	Lights when power is being supplied to the router.

## RF550VPN Back Panel



<b>Power 5VDC</b>	The power port connects the AC power adapter.
<b>10 BT WAN (10Base-T)</b>	The WAN port connects the xDSL modem or cable modem.
<b>Serial</b>	The Serial port connects a standard modem (optional).
<b>Reset</b>	The Reset button resets the router to factory defaults. Press and hold button until the serial LEDs blink. Then release the reset button. Do not press it again - you will clear the current data.
<b>Ports 1 - 4</b>	There are 4 LAN ports. You can connect to PCs, FTP servers, printers, or other devices you want to put on your network.

## **2 – Installation**

### **Safety Warnings**

1. Never install telephone wiring during a lightning storm.
2. Never install telephone jacks in a wet location unless the jack is specifically designed for wet locations.
3. This product is to be used with UL and cUL listed computers.
4. Never touch uninsulated telephone wires or terminals unless the telephone line has been disconnected at the network interface.
5. Avoid using a telephone during an electrical storm. There may be a remote risk of electrical shock from lightning.
7. Do not use the telephone to report a gas leak in the vicinity of the leak.
8. To reduce the risk of fire, use only No. 26 AWG or larger Telecommunications line cord.

### **System Requirements**

- Microsoft Internet Explorer 4.0+ or Netscape Navigator 4.0+
- One computer with an installed 10Mbps, 100Mbps or 10/100Mbps Ethernet card
- One Modem or ISDN TA (if a dialup backup connection is needed)
- One RJ-45 xDSL/Cable Internet connection
- TCP/IP protocol installed
- UTP network Cable with a RJ-45 connection

### **Unpacking Your RouteFinder**

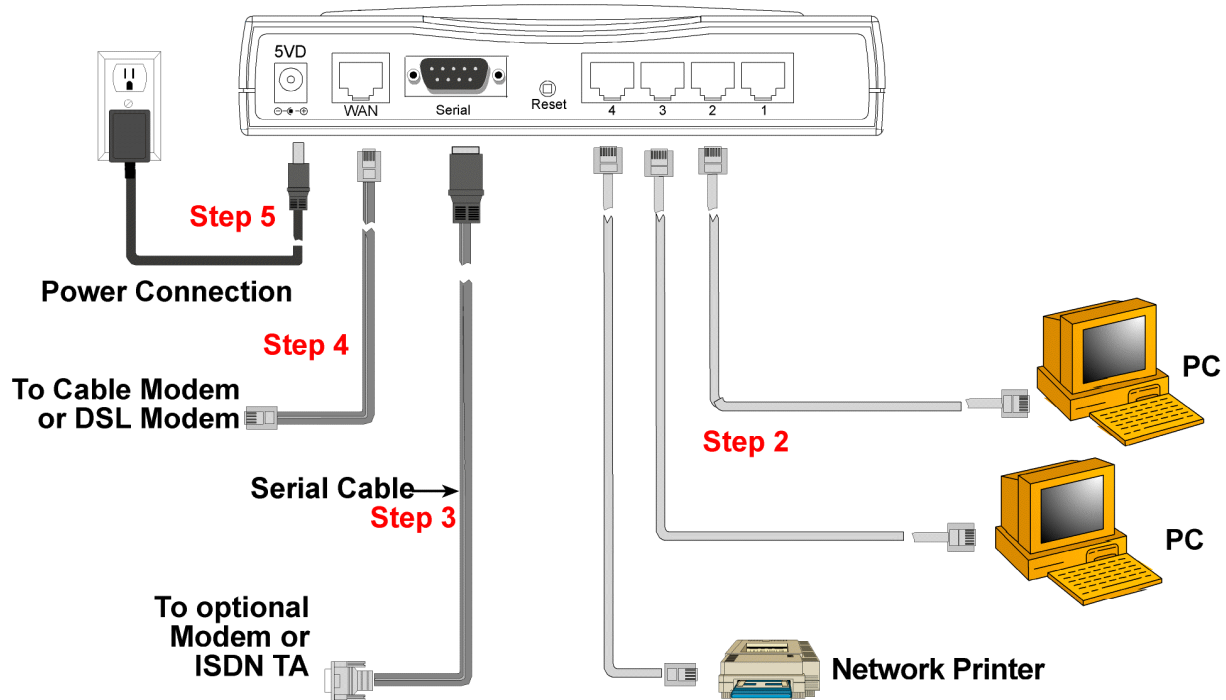
- The RF550VPN shipping box contains the following items:
- The RouteFinder RF550VPN
- System CD
- Power Supply
- This Quick Start Guide

If any of the items is missing or damaged, please contact Multi-Tech Systems, Inc.



## Cabling Your RouteFinder

Cabling your RouteFinder requires making the appropriate connections to PCs, Cable or xDSL modem, analog modem or ISDN TA (optional), AC power and the router. After your device is properly cabled, you will need to complete your configuration by following the instructions provided in the following chapter.



1. Turn the power off on all network devices (PCs, cable modems, DSL modems, analog modems, ISDN TAs, and the router).
2. Plug one end of a cable into the Ethernet port and other into one of the 4 LAN ports. (If you have more than one PC, connect the others in the same way to the other LAN ports).
3. If using an analog modem, connect it to the RF550VPN's serial port.
4. Connect a network cable from the DSL modem or cable modem to the WAN port.
5. Connect the provided power supply cable to the 5VDC power port on the back of the router. Plug the other end of the power supply into an AC power outlet as shown.

**You are ready to configure your router and network PCs.**

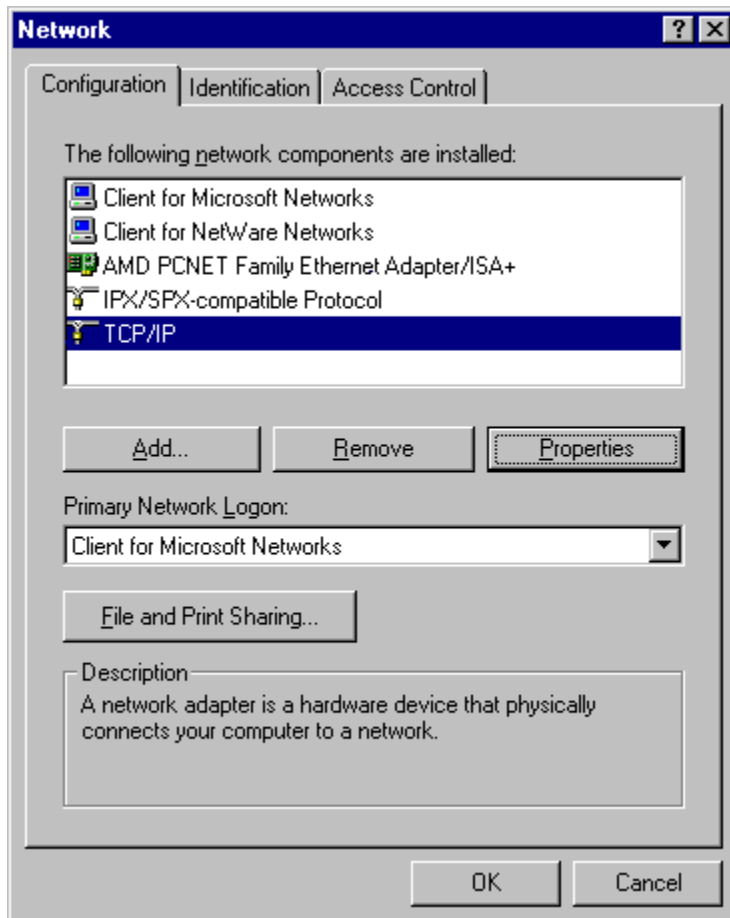
## 3 – Configuring the PC

You must establish TCP/IP communication on each PC (make sure a Network Card or Adapter has been installed into each PC).

### If Your Operating System Is Windows 98/Me:

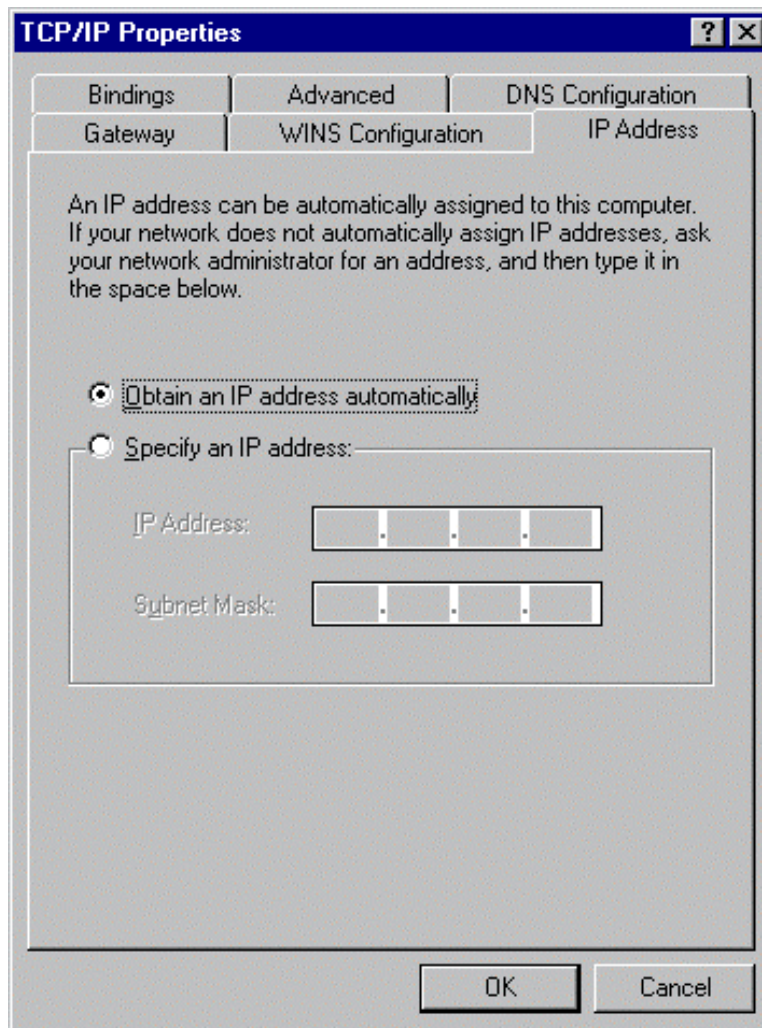
**Note:** The following procedures are based on Windows 98. Procedures may differ slightly in Windows Me. For Windows 98, check to see that you have installed the Windows 98 patch dated August 1998.

1. Click **Start | Settings | Control Panel**.
2. Double-click the **Network** icon.
3. On the **Configuration** tab, select the TCP/IP protocol line associated with your network card/adapter.
4. If the TCP/IP protocol line associated with your network card/adapter is listed, proceed to Step 5. If not listed, see the User Guide, Appendix B, for installation directions.
5. Then click the **Properties** button.



6. The TCP/IP Properties window displays. Click the IP Address tab to set your workstation's IP Address.
7. In the IP Address dialog box, choose one of the following:
  - To set a Dynamic IP Address, check **Obtain an IP Address Automatically**. Dynamic Addresses are used in the Example Reference Guide in **Example 2 – Site B** and **Example 3 – Site B**.
  - To set a Fixed IP Address, check **Specify an IP address**. Fixed Addresses are used in all the examples in the Example Reference Guide, except the two mentioned above. For our example, set the address to **192.168.2.x**.

Click **OK**.

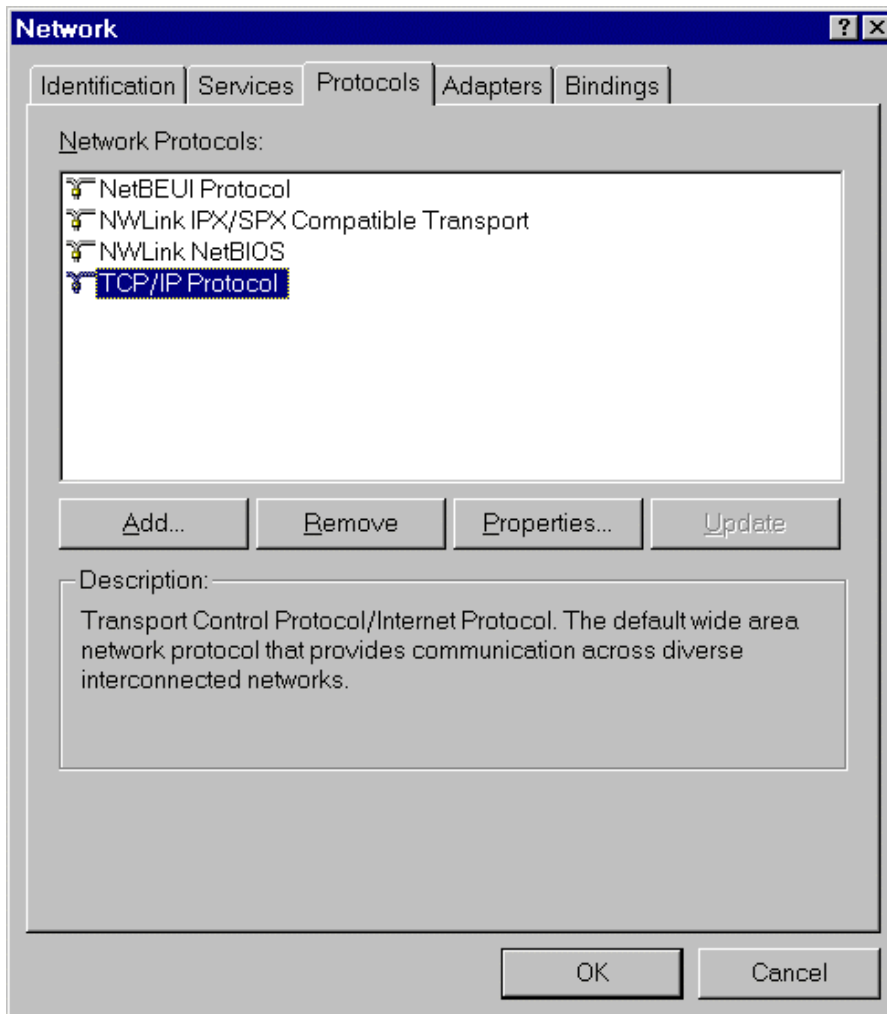


8. You have completed the client settings. Click **OK** to close out of the Network Control Panel.
9. Windows will ask you to restart the PC. Click the **Yes** button.

**Note:** Repeat these steps for each PC on your network.

## If Your Operating System Is Windows NT:

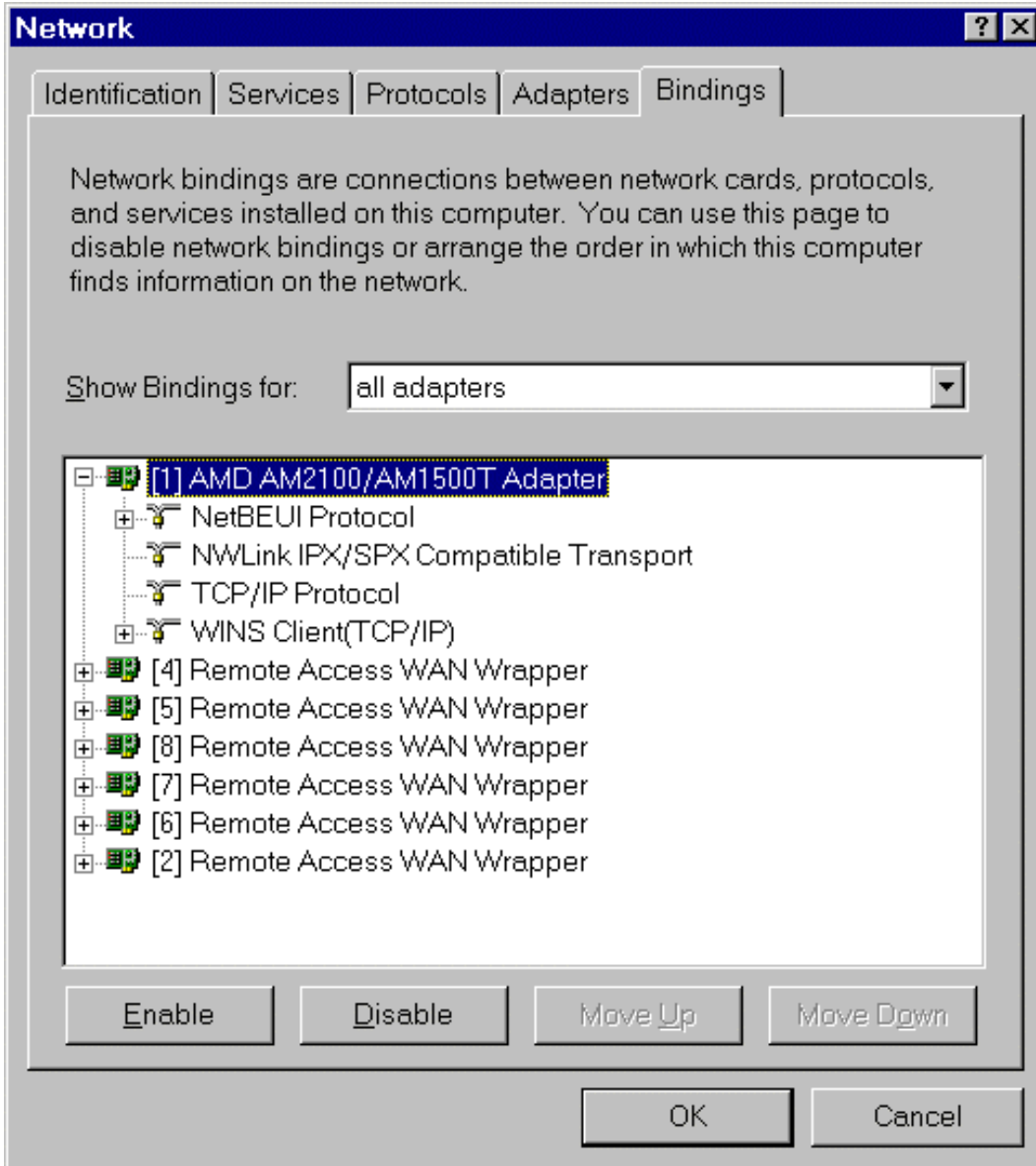
1. Click **Start | Settings | Control Panel**.
2. Double-click the **Network** icon.
3. The Network dialog box displays. Click the **Protocols** tab. Select the **TCP/IP** protocol line associated with your network card/adaptor. If TCP/IP is not listed, see the User Guide, Appendix B, for installation directions.
4. Click the **Bindings** tab.



5. The **Bindings** dialog box displays.

In the **Show Bindings for** drop-down list box, select **all adapters**. A list of all adapters displays on the lower part of the screen.

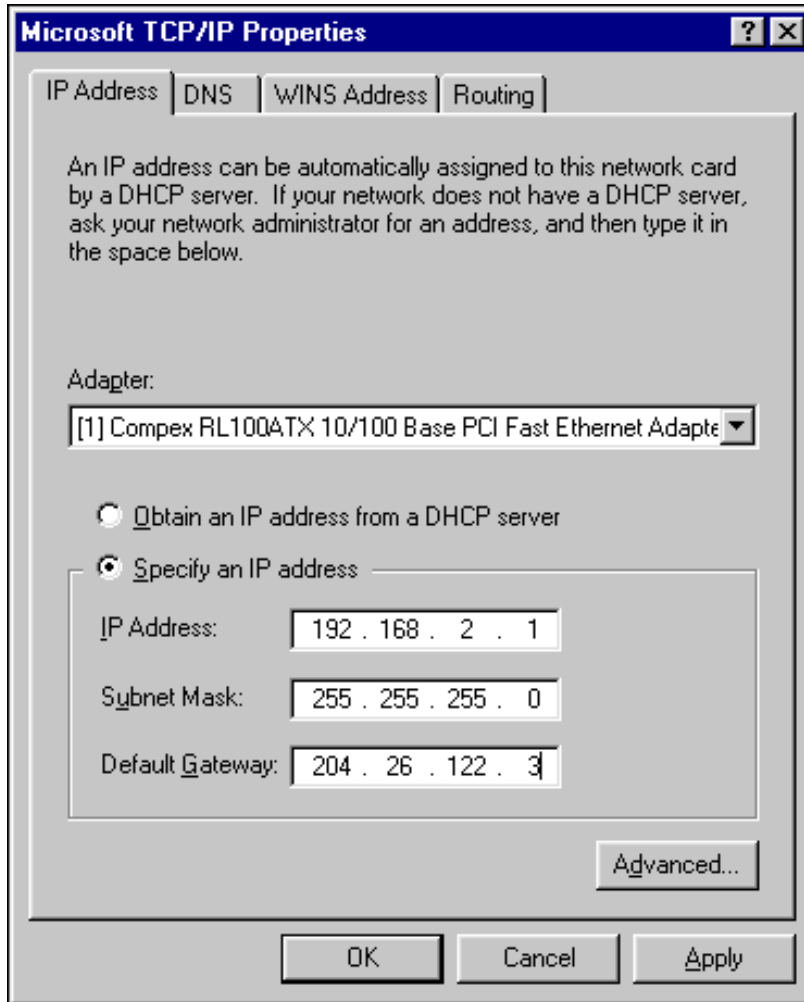
Double-click the entry for your Ethernet card adapter. This expands the list. Verify that TCP/IP is included in the list below your adapter name.



6. TCP/IP and your adapter are now setup.

7. Next, select the **Protocol** tab to set your workstation's IP Address.
8. Click the **Properties** button and choose one of the following:
  - To set a Dynamic IP Address, check **Obtain an IP Address Automatically**. Dynamic Addresses are used in Examples Reference Guide in *Example 2 – Site B* and *Example 3 – Site B*.
  - To set a Fixed IP Address, check Specify an IP address. Fixed Addresses are used in all the examples, except the two mentioned above. For our example, set the address to 192.168.2.x.

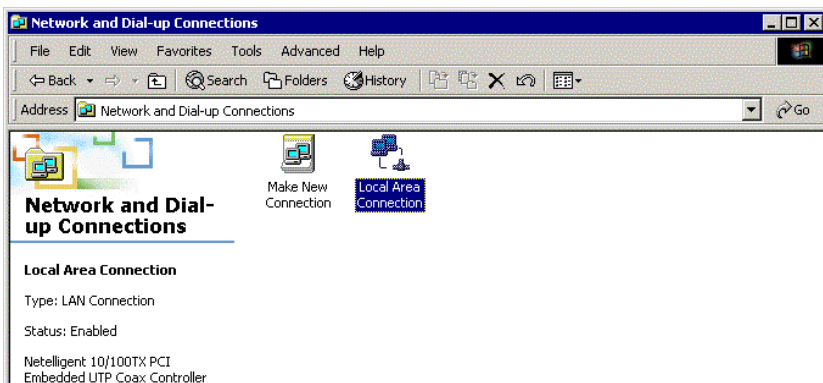
Click **OK**.



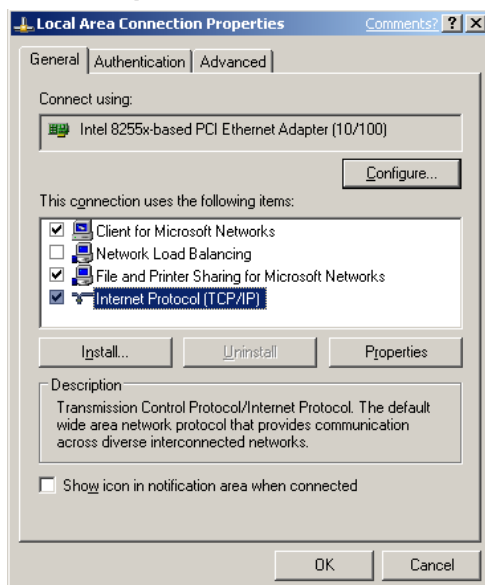
9. Close out of the **Control Panel**.
10. Repeat these steps for each PC on your network.

## If Your Operating System Is Windows 2000/XP

1. Click **Start | Settings | Control Panel**. Double-click the **Network and Dial-Up Connections** icon.
2. The **Network and Dial-Up Connections** screen displays. Right-click the **Local Area Connection** icon and choose **Properties**.



3. The **Local Area Connection Properties** dialog box displays.
  - Select **Internet Protocol [TCP/IP]**. Once the protocol is selected, the name of your adapter card should display in the **Connect using** box.
  - Click the **Properties** button.



4. The **Internet Protocol (TCP/IP) Properties** dialog box displays. Set your workstation's IP Address.
  - To set a Dynamic IP Address, check **Obtain an IP Address Automatically**. Dynamic Addresses are used in the Examples Reference Document in **Example 2 – Site B** and **Example 3 – Site B**.
  - To set a Fixed IP Address, check **Specify an IP address**. Fixed Addresses are used in all the examples, except the two mentioned above. Click **OK**.
5. Close out of the **Control Panel**.
6. Repeat these steps for each PC on your network.

## 4 – Navigating the Screens

### Buttons on the Main Menu

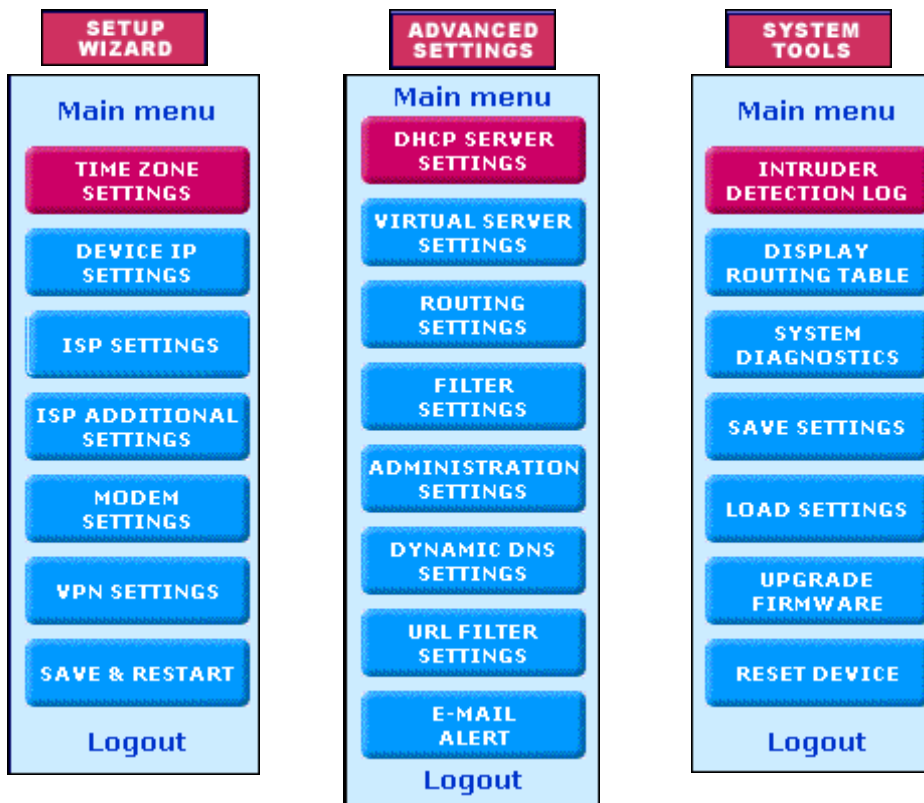
When you select a function by clicking the button at the top of the screen, the button will change from red to blue denoting that this is now the active screen.

### Buttons on the Function Screens

- **Buttons at the Top of the Screen:** These are the main function buttons. They allow you to move from one function to another: Device Information, Device Status, Setup Wizard, Advanced Settings, System Tools, and Help.



- **Buttons on Side of the Screen:** These are submenus under some of the main functions. When you select one of these buttons, it will turn from red to blue denoting that this is now the active selection.
- **Links:** Click on **Main Menu** to return to the Main Menu. Click on **Logout** to exit the program.





## 5 – Configuring the RF550VPN

### About the Browser Interface

Initial configuration is required in order for you to begin operation. The browser-based interface eases VPN configuration and management.

### About IPSec

The VPN functionality is based on the IPSec protocol and uses 168-bit Triple DES (3DES) encryption to ensure that your information remains private.

### Start the RF550VPN Configuration

#### 1. Connect your workstation.

Be sure your workstation is connected to one of the RF550VPN's LAN ports.

#### 2. Apply power.

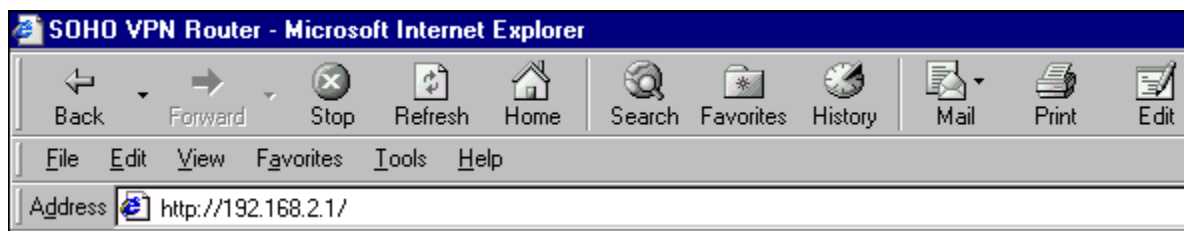
Apply power to the RF550VPN RouteFinder and allow the LEDs to stabilize on the unit.

#### 3. Set the workstation IP address.

The directions for setting your workstation IP address are covered in Chapter 3.

#### 4. Open a Web browser.

- At the Web browser's address line, type the RF550VPN IP address (<http://192.168.2.1> (This is the default address of your RouteFinder).
- Press Enter.



**Note:** Make sure your PC's address is on the same network as the router's address. **WINIPCONFIG** and **IPCONFIG** are tools for finding out a PC's IP configuration: the default gateway and the MAC address. In Windows 95/98/Me, type **WINIPCONFIG**. In Windows 2000/NT, type **IPCONFIG**.

## 5. The Password dialog box displays. Type your network password.

- Type **admin** (*admin* is the default user name) in the user name box. Leave the password box empty.
- Click **OK**. The **Setup Wizard** screen displays.

**Note:** To change your password, select **Advanced Settings**, and then choose **Administrative Settings**. See the User Guide for details.

## 6. The Main Menu displays.

On the **Main Menu**, click the **Setup Wizard** button.

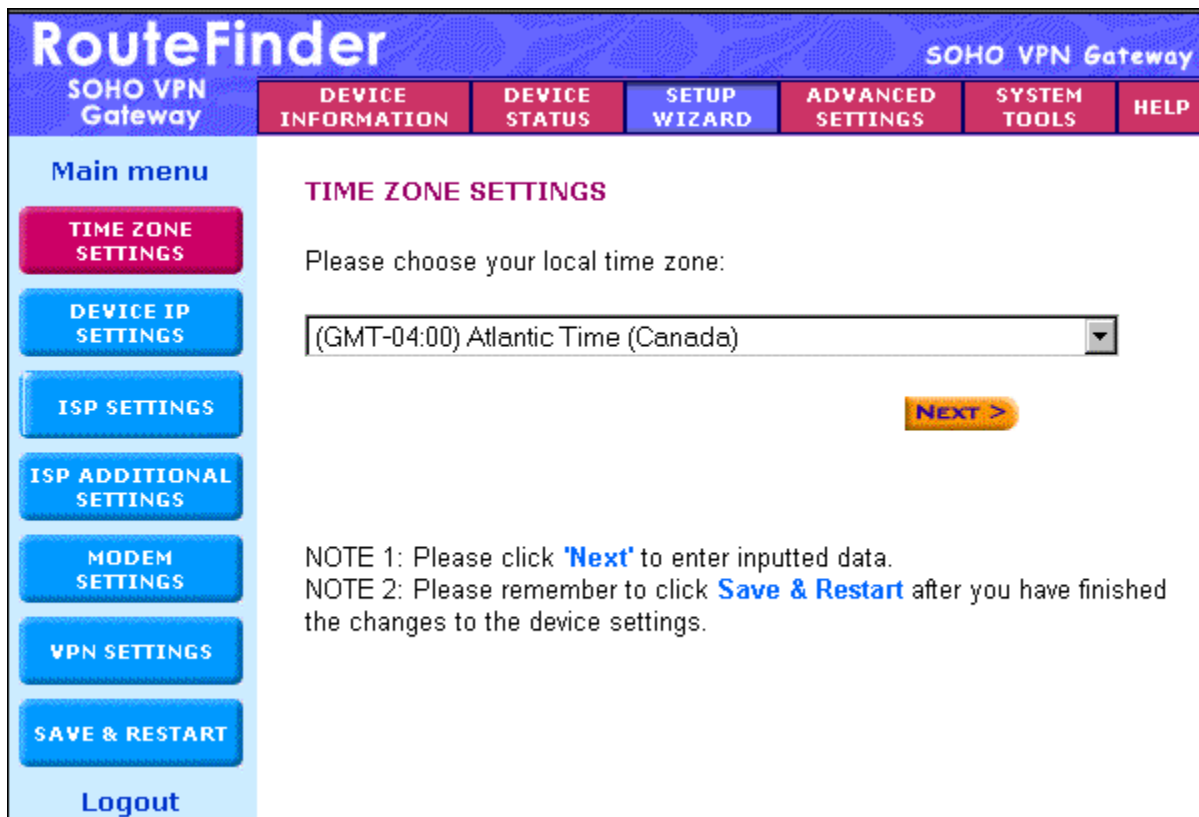
# Setup Wizard

**SETUP WIZARD** When the **Setup Wizard** screen displays, the **Setup Wizard** button will turn blue to indicate that the screen is active.

The following screen is the first **Setup Wizard** screen. From here you will follow a step-by-step process that lets you input all of the basic settings to configure your RF550VPN.

## **SETUP WIZARD** – Time Zone Selection

Select the time zone, and then click the **Next** button to continue. You can also click the buttons on the left side of the screen. These buttons are useful when you want to change the information on individual screens or to choose your own setup order.



**RouteFinder** SOHO VPN Gateway

SOHO VPN Gateway

DEVICE INFORMATION | DEVICE STATUS | **SETUP WIZARD** | ADVANCED SETTINGS | SYSTEM TOOLS | HELP

Main menu

**TIME ZONE SETTINGS**

DEVICE IP SETTINGS

ISP SETTINGS

ISP ADDITIONAL SETTINGS

MODEM SETTINGS

VPN SETTINGS

SAVE & RESTART

Logout

**TIME ZONE SETTINGS**

Please choose your local time zone:

(GMT-04:00) Atlantic Time (Canada)

**NEXT >**

NOTE 1: Please click **'Next'** to enter inputted data.  
NOTE 2: Please remember to click **Save & Restart** after you have finished the changes to the device settings.

**SETUP WIZARD** – Device IP Settings

On this screen, enter the internal LAN IP address that you want to assign to the LAN port of the RF550VPN. This is **not** the IP address from your ISP – it is the local internal LAN IP address.

**Device IP Address:** The default IP address of your RF550VPN: **192.168.2.1**.

**Device IP Subnet Mask:** The subnet mask can usually be left at its default of **255.255.255.0**

Click the **Next** button.

**RouteFinder** SOHO VPN Gateway

SOHO VPN Gateway

DEVICE INFORMATION | DEVICE STATUS | **SETUP WIZARD** | ADVANCED SETTINGS | SYSTEM TOOLS | HELP

Main menu

- TIME ZONE SETTINGS
- DEVICE IP SETTINGS**
- ISP SETTINGS
- ISP ADDITIONAL SETTINGS
- MODEM SETTINGS
- VPN SETTINGS
- SAVE & RESTART
- Logout

**DEVICE IP SETTINGS**

The device IP address and subnet mask settings

IP Address:  .  .  .

IP Subnet Mask:  .  .  .

< BACK NEXT >

NOTE: Please click **'Next'** to enter inputted data.

**SETUP WIZARD – ISP Settings**

On this screen you can select to have the program automatically get your IP settings from your ISP DHCP server or you can choose one of four options for manually inputting your IP settings.

- From the drop down list box, select the type of settings you will be entering. The default screen is **Static IP Settings**.

Connect to Cable ISP
<b>Static IP Settings</b>
PPPoE Settings
PPTP Settings
Telstra Settings

**2a. Static IP Settings**

Use this screen when your ISP requires you to enter your ISP settings and you want to use static IP settings. Enter the **IP assigned by your ISP**, your **IP Subnet Mask**, and your **ISP Gateway Address**.

RouteFinder		SOHO VPN Gateway					
SOHO VPN Gateway		DEVICE INFORMATION	DEVICE STATUS	SETUP WIZARD	ADVANCED SETTINGS	SYSTEM TOOLS	HELP
Main menu		<b>ISP SETTINGS - Static IP Settings</b>					
TIME ZONE SETTINGS DEVICE IP SETTINGS <b>ISP SETTINGS</b> ISP ADDITIONAL SETTINGS MODEM SETTINGS VPN SETTINGS SAVE & RESTART Logout		<b>1. Select the ISP Settings List below</b> Static IP Settings <input type="text"/>					
		IP assigned by your ISP: <input type="text"/> 204 <input type="text"/> 26 <input type="text"/> 122 <input type="text"/> 3					
		IP Subnet Mask: <input type="text"/> 255 <input type="text"/> 255 <input type="text"/> 255 <input type="text"/> 0					
		ISP Gateway Address: <input type="text"/> 204 <input type="text"/> 26 <input type="text"/> 122 <input type="text"/> 103					
		<b>2. Click Next to send your request to the Cable/xDSL Broadband Router.</b>					
		<input type="button" value=" &lt; BACK"/> <input type="button" value=" NEXT &gt;"/>					

## 2b. Other ISP Setting Options: Connect to Cable ISP and PPPoE Settings

### Connect to Cable ISP

**ISP SETTINGS - Connect to Cable ISP**

1. Select the ISP connection type

Connect to Cable ISP ▾

Connect to Cable ISP	Automatically Get IP settings from ISP DHCP server
Static IP Settings	Your ISP requires you to input IP settings
PPPoE Settings	Your ISP requires you to logon using PPPoE connection
PPTP Settings	Your ISP requires you to logon using PPTP connection
Telstra Settings	Your ISP requires you to logon using BPALogin connection

2. Click Next to send your request to the Cable/xDSL Broadband Router.

Use this screen to have the program automatically get your IP settings from your ISP DHCP server and to see a description of each option.

- Select **Connect to Cable ISP**.
- Click **Next**.

### PPPoE Settings

**ISP SETTINGS - PPPoE Settings**

1. Select the ISP Settings List below

PPPoE Settings ▾

User Name:

Password:

Retype Password:

Idle Time: 5 minutes ▾

**Connection Type:**

Always Connect
  Trigger on Demand
  Manually

Dynamic (IP automatically assigned by your ISP)
  Fixed (Your ISP requires you to input IP address)

IP assigned by your ISP:  .  .  .

IP Netmask:  .  .  .

2. Click Next to send your request to the Cable/xDSL Broadband Router.

Use this screen when your ISP requires you to enter your ISP settings and you want to use PPPoE settings.

- Enter your **User Name**, **Password**, **Retype the Password** (for verification), and select your idle time.
- Select your **Connection Type** by clicking on the desired connection type button.
- Choose either **Dynamic** or **Fixed**. This will determine how you IP address will be assigned.
  - A **Dynamic** IP address is one automatically assigned by your ISP.
  - A **Fixed** IP address is an address that always stays the same. You will have to enter the **Fixed IP address assigned by your ISP** and your **IP Netmask**.
- Click **Next**.

## 2b (Continued). Other Options: PPTP Settings, Telstra Settings

### PPTP Settings

**ISP SETTINGS - PPTP Settings**

1. Select the ISP Settings List below

PPTP Settings

User Name:

Password:

Retype Password:

Idle Time: 5 minutes

PPTP Client IP:  .  .  .

PPTP Server IP:  .  .  .

Connection ID/Name:

**Connection Type:**

Always Connect  Trigger on Demand  Manually

Dynamic (IP automatically assigned by your ISP)

Fixed (Your ISP requires you to input IP address)

IP assigned by your ISP:  204 .  26 .  122 .  3

IP Netmask:  255 .  255 .  255 .  0

2. Click Next to send your request to the Cable/xDSL Broadband Router.

< BACK NEXT >

Use this screen when your ISP requires you to enter your ISP settings and you want to use PPTP settings.

- Enter your **User Name, Password, Retype the Password** (for verification), select your idle time, enter your **PPTP Client IP address, PPTP Server IP address**, and your **Connection ID or Name**.
- Select your **Connection Type** by clicking on the desired connection type button.
- Choose either **Dynamic** or **Fixed**. This will determine how your IP address will be assigned.  
A **Dynamic** IP address is one automatically assigned by your ISP.  
A **Fixed** IP address is an address that always stays the same. You will have to enter the **Fixed IP address assigned by your ISP** and your **IP Netmask**.
- Click **Next**.

### Telstra Settings

**ISP SETTINGS - Telstra Settings**

1. Select the ISP Settings List below

Telstra Settings

User Name:

Password:

Retype Password:

Default Domain:

2. Click Next to send your request to the Cable/xDSL Broadband Router.

< BACK NEXT >

Use this screen when your ISP requires you to enter your ISP settings and you want to use Telstra settings.

- Enter your **User Name, Password, Retype the Password** (for verification), and your **Default Domain** name.
- Click **Next**.

**SETUP WIZARD****– ISP Additional Settings**

If your ISP requires you to manually input your system information, use the fields on this screen to fulfill that requirement.

1. Check the box labeled **Your ISP requires you to manually setup DNS settings** if your ISP requires this.

Then enter the DNS (Domain Name Server) address or addresses. These can be left as 0.0.0.0 for a LAN-to-LAN RouteFinder connection.

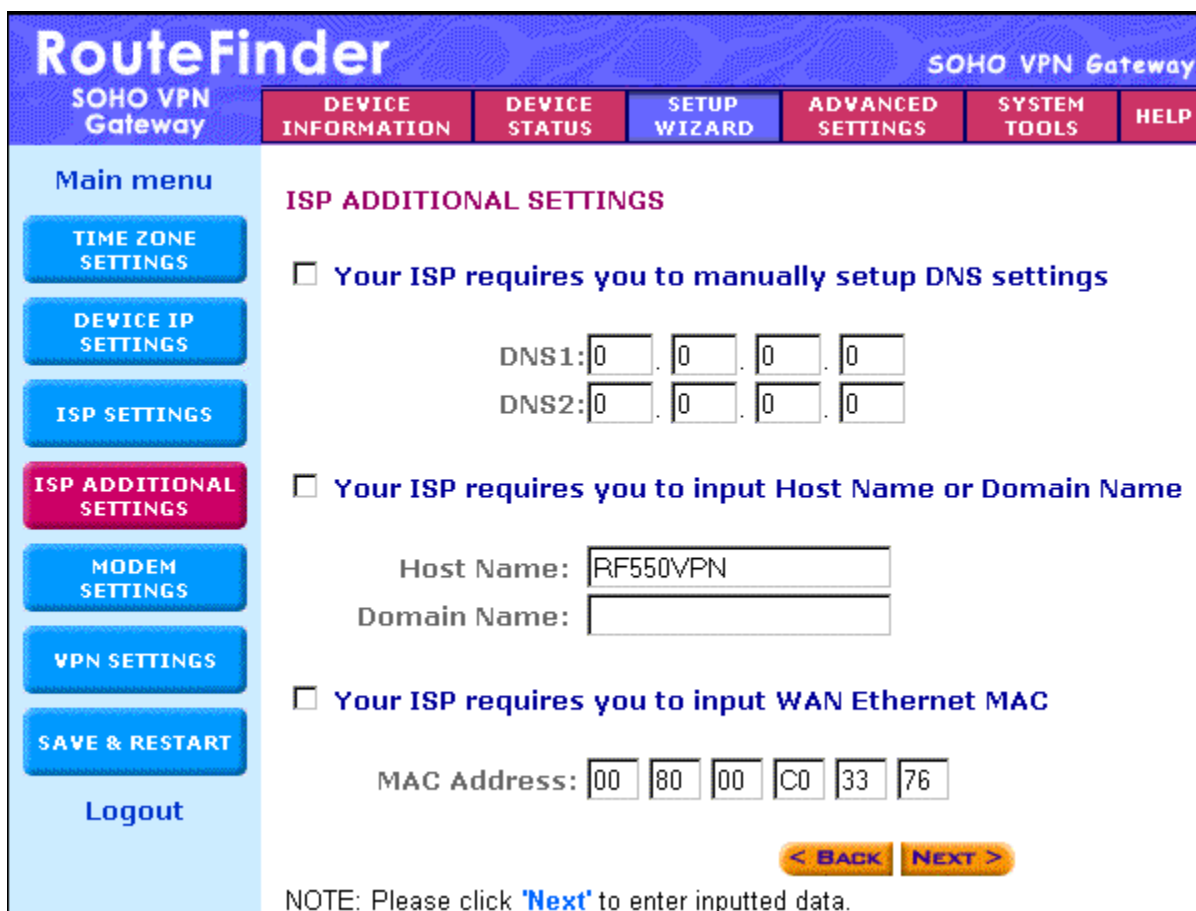
2. Check the box labeled **Your ISP requires you to input Host Name or Domain Name** if your ISP requires this.

Then enter the **Host Name** and the **Domain Name**.

3. Check the box labeled **Your ISP requires you to input WAN Ethernet MAC** if your ISP requires this.

Then enter the MAC address.

Click the **Next** button.



**RouteFinder** SOHO VPN Gateway

SOHO VPN Gateway

DEVICE INFORMATION DEVICE STATUS SETUP WIZARD ADVANCED SETTINGS SYSTEM TOOLS HELP

Main menu

TIME ZONE SETTINGS

DEVICE IP SETTINGS

ISP SETTINGS

**ISP ADDITIONAL SETTINGS**

MODEM SETTINGS

VPN SETTINGS

SAVE & RESTART

Logout

**ISP ADDITIONAL SETTINGS**

**Your ISP requires you to manually setup DNS settings**

DNS1: 0 . 0 . 0 . 0

DNS2: 0 . 0 . 0 . 0

**Your ISP requires you to input Host Name or Domain Name**

Host Name: RF550VPN

Domain Name:

**Your ISP requires you to input WAN Ethernet MAC**

MAC Address: 00 80 00 C0 33 76

< BACK NEXT >

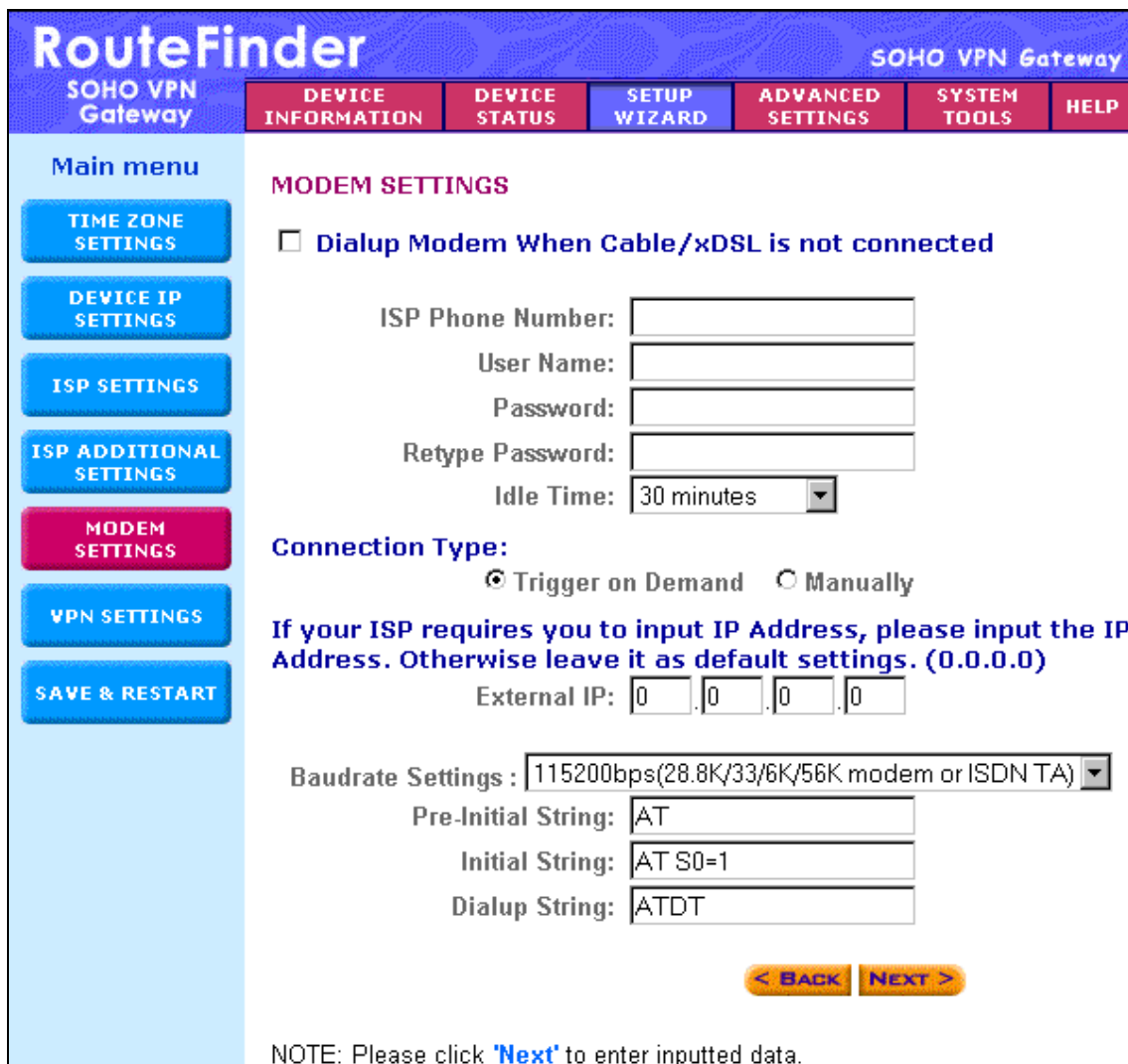
NOTE: Please click 'Next' to enter inputted data.



**SETUP WIZARD****– Modem Settings (Optional)**

A modem can be used as a dialup backup to the Cable/xDSL connection.

The checkbox **Dialup Modem When Cable/xDSL is not connected** should be checked in order to use the modem as a backup to cable or xDSL when the cable or xDSL are not working. To add the modem to your setup, connect the modem and input the ISP account settings.



**RouteFinder** SOHO VPN Gateway

SOHO VPN Gateway

DEVICE INFORMATION | DEVICE STATUS | **SETUP WIZARD** | ADVANCED SETTINGS | SYSTEM TOOLS | HELP

Main menu

TIME ZONE SETTINGS

DEVICE IP SETTINGS

ISP SETTINGS

ISP ADDITIONAL SETTINGS

**MODEM SETTINGS**

VPN SETTINGS

SAVE & RESTART

**MODEM SETTINGS**

Dialup Modem When Cable/xDSL is not connected

ISP Phone Number:

User Name:

Password:

Retype Password:

Idle Time: 30 minutes ▼

**Connection Type:**

Trigger on Demand  Manually

If your ISP requires you to input IP Address, please input the IP Address. Otherwise leave it as default settings. (0.0.0.0)

External IP:

Baudrate Settings: 115200bps(28.8K/33/6K/56K modem or ISDN TA) ▼

Pre-Initial String:  AT

Initial String:  AT S0=1

Dialup String:  ATDT

< BACK | NEXT >

NOTE: Please click 'Next' to enter inputted data.

- Enter your **ISP Phone Number**, **User Name**, **Password**, **Retype the Password** (for verification), and select your idle time.
- Select your **Connection Type** by clicking on the desired connection type button.
- Enter your **External IP Address**.
- Select your **Baudrate Settings**.
- Enter your dialing strings: **Pre-Initial String**, **Initial String**, and **Dialup String**.
- Click **Next** to have the system accept your data and to move to the next screen.

**SETUP  
WIZARD****– VPN Settings**

Use this screen to input your LAN-to-LAN VPN settings and/or your Client-to-LAN VPN settings.

1. In the **Connection Name** field, type a name that describes a connection you would like to make.

Example: **Site A**.

**RouteFinder** SOHO VPN Gateway

DEVICE INFORMATION | DEVICE STATUS | **SETUP WIZARD** | ADVANCED SETTINGS | SYSTEM TOOLS | HELP

**Main menu**

- TIME ZONE SETTINGS
- DEVICE IP SETTINGS
- ISP SETTINGS
- ISP ADDITIONAL SETTINGS
- MODEM SETTINGS
- VPN SETTINGS**
- SAVE & RESTART
- Logout

**VPN SETTINGS**

Connection Name  **ADD**

Disable Internet Access (VPN Tunnel Only)

Enable	Connection Name	Local IPSEC ID	Remote IPSEC ID	Command

< BACK | NEXT >

2. Click the **Add** button, and the **VPN Settings** detail screen will display (see the next screen). Once you have entered the settings, the **Connection Name** displays on the lower half of the screen (above).
3. Click the checkbox if you want to **Disable Internet Access (VPN Tunnel Only)**.
4. You can then edit, delete, or enable/disable this connection by clicking the corresponding buttons.
5. To enable this connection, check the **Enable** box.

**Note:** If you uncheck the Enable box, the connection will not be active, but the parameters will remain on the screen for you to enable, edit, or delete as desired.

SETUP  
WIZARD

## – Enter the VPN Specific Settings

RouteFinder
SOHO VPN Gateway

SOHO VPN Gateway
DEVICE INFORMATION
DEVICE STATUS
SETUP WIZARD
ADVANCED SETTINGS
SYSTEM TOOLS
HELP

Main menu

TIME ZONE SETTINGS

DEVICE IP SETTINGS

ISP SETTINGS

ISP ADDITIONAL SETTINGS

MODEM SETTINGS

VPN SETTINGS

SAVE & RESTART

Logout

### VPN SETTINGS

Connection Name

Enable UID (Unique Identifier String)  Disable UID

Local IPSEC Identifier

Remote IPSEC Identifier

Enabled Keep Alive  Enabled NetBIOS Broadcast

Remote Site  Single User  LAN

Remote IP Network

Remote IP Netmask

Remote Gateway IP/FQDN

Network Interface

Secure Association  IKE  Manual

Perfect Forward Secure  Enabled  Disabled

Encryption Protocol

PreShared Key

Key Life  Seconds

IKE Life Time  Seconds SAVE

Enable	Connection Name	Local IPSEC ID	Remote IPSEC ID	Command

< BACK
NEXT >

NOTE:

1. Local IPSEC Identifier and Remote IPSEC Identifier are disabled for entering when Disable UID is checked.
2. Remote IP is the same as Remote Gateway IP/FQDN

Your **Connection Name** defaults into the **Connection Name** box. Enter the following:

VPN Setting Name	Description	Example
Enable/Disable UID	Accept the default <b>Disable UID</b> . When <b>Disable</b> is selected the <b>Local and Remote IPSEC Identifier</b> fields are not active. <b>Enable UID</b> is an option for compatibility purposes only (other IPSEC VPN gateways might require you to input a Local and	Disable

	Remote IPSec Identifier).	
<b>Enable Keep Alive</b>	When enabled, will automatically renegotiate VPN if a tunnel is temporarily interrupted.	Enabled
<b>Remote Site</b>	Choose whether the remote site will be used by a single user or a LAN.	
<b>Enable NetBIOS Broadcast</b>	When enabled, will allow Microsoft File and Printer sharing to communicate information about computers on the network.	Enabled
<b>Remote IP Network</b>	Enter Remote IP Network address (LAN) for Site B.	192.168.10.0
<b>Remote IP Netmask</b>	Enter Remote IP Netmask address for Site B.	255.255.255.0
<b>Remote Gateway IP/FQDN</b>	Enter Remote Gateway IP address (WAN) for Site B.	204.26.122.3
<b>Network Interface</b>	Select the Network Interface from the drop-down list box.	WAN ETHERNET

### If You Select IKE for the Secure Association, the Following Fields Display

<b>Secure Association</b>	Select IKE (the default) to set how inbound packets will be filtered. IKE primarily encompasses router key exchange and the negotiation of security policy. Selecting IKE activates the remaining input settings on this screen.	
<b>Perfect Forward Secure</b>	Check the Enabled button.	
<b>Encryption Protocol</b>	Select 3DES.	
<b>PreShared Key</b>	Enter the PreShared Key name. You can enter an alphanumeric name, but it must match the security code for the RouteFinder at site B.	1234
<b>Key Life</b>	Enter the amount of time that tells the router to renegotiate the Key	3600 seconds is 60 minutes
<b>IKE Life Time</b>	Enter the amount of time that tells the router to renegotiate the IKE security association.	28800 seconds is 8 hours

Click the **Save** button. Your defined connections are displayed at the bottom of this screen where you can edit or delete them.

**This concludes the basic configuration of your SOHO RouteFinder.**

**It is a good idea to save the settings at this time by clicking the Save and Restart button.**

**Chapter 6 in the User Guide provides the directions for using the RouteFinder's Advanced Settings.**

**SETUP  
WIZARD****– Save and Restart**

After you have finished entering and/or editing the information on the previous screens, click the **Save and Restart** button on the left-hand side of the screen. This will save all of the preceding settings and restart the device. After the restart, the device will function according to the saved settings.

**RouteFinder** SOHO VPN Gateway

SOHO VPN Gateway

DEVICE INFORMATION | DEVICE STATUS | **SETUP WIZARD** | ADVANCED SETTINGS | SYSTEM TOOLS | HELP

Main menu

TIME ZONE SETTINGS

DEVICE IP SETTINGS

ISP SETTINGS

ISP ADDITIONAL SETTINGS

MODEM SETTINGS

VPN SETTINGS

**SAVE & RESTART**

Logout

**SAVE & RESTART**

You have successfully configured the settings for the device.

NOTE: After you have finished making all the changes on the various pages, please click Save & Restart to save the settings and restart the device. After the restart, the device will function according to the saved settings.

Click Save & Restart to save the settings and restart the device!

**SAVE & RESTART**

During the save and restart process, system messages will let you know that you have successfully configured the settings for the device and saved the settings. You will see a status bar across the bottom of your browser showing the progress of the startup process.

The device is saving the settings and will restart. During the startup process the LED of the device will blink. Please wait until the blinking of the device stops before proceeding. The Home page will be loaded automatically after restart is completed!



## 6 – Technical Support

Multi-Tech provides free technical support for as long as your product remains in service. Before calling Technical Support, please read through the Troubleshooting chapter in the User Guide. Also, complete the *Recording RouteFinder Information* section below.

### Contacting Technical Support

Country	Using email	By phone
France	Support@multitech.fr	+(33) 1-64 61 09 81
India	Support@multitechindia.com	+(91) 124-340778
U.K.	Support@multitech.co.uk	+(44) 118 959 7774
Rest of World	Support@multitech.com	800-972-2439 (U.S. & Canada) or +763-785-3500

### Recording RouteFinder Information

Before placing a call to our Technical Support staff, record the following information about your Multi-Tech RouteFinder.

**Model no.:** \_\_\_\_\_

**Serial no.:** \_\_\_\_\_

**Firmware version:** \_\_\_\_\_

List information that indicates the status of your RouteFinder in the space provided before calling tech support. Include screen messages, diagnostic test results, problems with a specific application, etc.

---

---

### On-line Warranty Registration

If you have access to the World Wide Web, you can register your Multi-Tech product online at the following URL <http://www.multitech.com/register>

### Contacting Multi-Tech by Internet

Multi-Tech System, Inc. maintains a Web site and an FTP site at:

<http://www.multitech.com>

<ftp://ftp.multitech.com>



---

## Warranty

Multi-Tech Systems, Inc., (hereafter "MTS") warrants that its products will be free from defects in material or workmanship for a period of two, five, or ten years (depending on model) from date of purchase, or if proof of purchase is not provided, two, five, or ten years (depending on model) from date of shipment.

MTS MAKES NO OTHER WARRANTY, EXPRESS OR IMPLIED, AND ALL IMPLIED WARRANTIES OF MERCHANTABILITY AND FITNESS FOR A PARTICULAR PURPOSE ARE HEREBY DISCLAIMED.

This warranty does not apply to any products which have been damaged by lightning storms, water, or power surges or which have been neglected, altered, abused, used for a purpose other than the one for which they were manufactured, repaired by Customer or any party without MTS's written authorization, or used in any manner inconsistent with MTS's instructions.

MTS's entire obligation under this warranty shall be limited (at MTS's option) to repair or replacement of any products which prove to be defective within the warranty period or, at MTS's option, issuance of a refund of the purchase price. Defective products must be returned by Customer to MTS's factory – transportation prepaid.

MTS WILL NOT BE LIABLE FOR CONSEQUENTIAL DAMAGES, AND UNDER NO CIRCUMSTANCES WILL ITS LIABILITY EXCEED THE PRICE FOR DEFECTIVE PRODUCTS.

**Note: To read the warranty and repair policy in its entirety, see the User Guide on the RF550VPN CD.**



S000237E



## Free Manuals Download Website

<http://myh66.com>

<http://usermanuals.us>

<http://www.somanuals.com>

<http://www.4manuals.cc>

<http://www.manual-lib.com>

<http://www.404manual.com>

<http://www.luxmanual.com>

<http://aubethermostatmanual.com>

Golf course search by state

<http://golfingnear.com>

Email search by domain

<http://emailbydomain.com>

Auto manuals search

<http://auto.somanuals.com>

TV manuals search

<http://tv.somanuals.com>