

EL150EX SWITCH/TERMINAL KIT INSTALLATION INSTRUCTIONS



Please read the following information before installing. A visual inspection of this product for damage during shipping is recommended before mounting. It is your responsibility to have a qualified person install this unit and make sure it conforms to NEC and local codes.

GENERAL INFORMATION

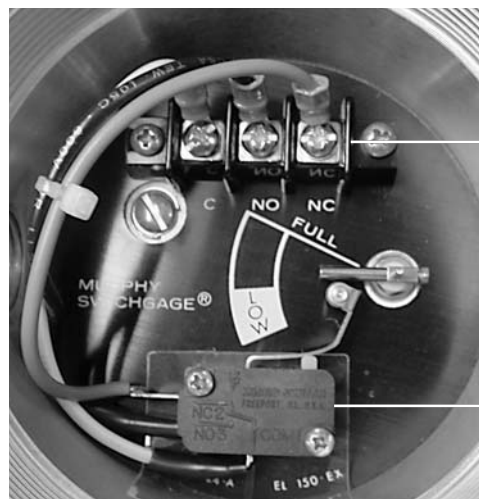
WARNING

BEFORE BEGINNING INSTALLATION OF THIS MURPHY PRODUCT

- ✓ Disconnect all electrical power to the machine.
- ✓ Make sure the machine cannot operate during installation.
- ✓ Follow all safety warnings of the machine manufacturer.
- ✓ Read and follow all installation instructions.

Installation

1. Place screws in terminal block mounting holes and fasten to the cover as shown in Figure 1.
2. Place clear plastic insulator behind microswitch and insert screws through microswitch mounting holes.
3. Place microswitch assembly inside the cover and tighten screws as shown in Figure 1. Make sure that all wires are placed along the left side of the cover and that they do not interfere with the operation of the unit.
4. Calibrate the microswitch by holding the microswitch arm down and bending the end of the arm up with needle nose pliers. (See Figure 2)
5. Hold the unit in hand, and move the float down while listening for the microswitch to “click”. Microswitch should “click” when pointer is between the **L** and **O** in the word **LOW** as shown in Figure 2.
6. Repeat steps 4 & 5 until microswitch “clicks” at the correct location.



Terminal Block

Microswitch Assembly

Figure 1.

Complete Installation of Switch/Terminal Kit

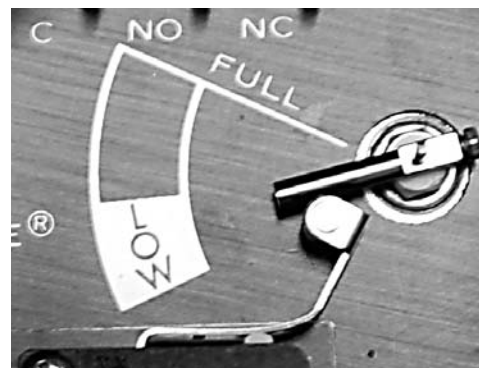


Figure 2.

Example of Correct Calibration

Warranty

A limited warranty on materials and workmanship is given with this FW Murphy product. A copy of the warranty may be viewed or printed by going to www.fwmurphy.com/support/warranty.htm



FW Murphy

P.O. Box 470248
Tulsa, Oklahoma 74147 USA
+1 918 317 4100 fax +1 918 317 4266
e-mail sales@fwmurphy.com
www.fwmurphy.com

CONTROL SYSTEMS & SERVICES DIVISION

P.O. Box 1819; Rosenberg, Texas 77471; USA
+1 281 633 4500 fax +1 281 633 4588
e-mail sales@fwmurphy.com

MURPHY DE MEXICO, S.A. DE C.V.

Blvd. Antonio Rocha Cordero 300, Fracción del Aguaje
San Luis Potosí, S.L.P.; México 78384
+52 444 8206264 fax +52 444 8206336
Villahermosa Office +52 993 3162117
e-mail ventas@murphymex.com.mx
www.murphymex.com.mx

INDUSTRIAL PANEL DIVISION

P.O. Box 470248
Tulsa, Oklahoma 74147 USA
+1 918 317 4100 fax +1 918 317 4266
e-mail sales@fwmurphy.com
www.fwmurphy.com

FRANK W. MURPHY, LTD.

Church Rd.; Laverstock, Salisbury SP1 1QZ; U.K.
+44 1722 410055 fax +44 1722 410088
e-mail sales@fwmurphy.co.uk
www.fwmurphy.co.uk



USA-ISO 9001:2000 FM 28221
UK-ISO 9001:2000 FM 28222

Printed in U.S.A.

Free Manuals Download Website

<http://myh66.com>

<http://usermanuals.us>

<http://www.somanuals.com>

<http://www.4manuals.cc>

<http://www.manual-lib.com>

<http://www.404manual.com>

<http://www.luxmanual.com>

<http://aubethermostatmanual.com>

Golf course search by state

<http://golfingnear.com>

Email search by domain

<http://emailbydomain.com>

Auto manuals search

<http://auto.somanuals.com>

TV manuals search

<http://tv.somanuals.com>