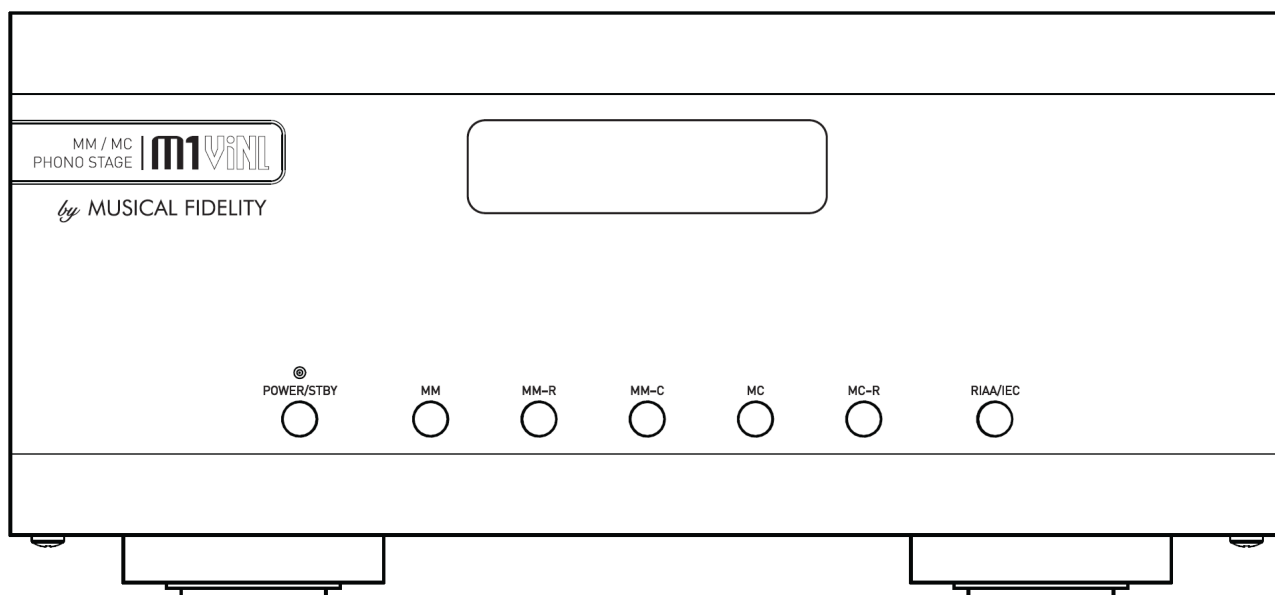


MM / MC PHONO STAGE | m1ViNL



Instructions for use

Thank you for purchasing the Musical Fidelity M1 ViNL

The M1 ViNL consists of a top quality phono stage with precise RIAA or RIAA/IEC frequency response. It features switchable loading options for all cartridge types and high quality buffered single ended and balanced outputs.

This combination yields one of the best high-fidelity systems available at any price.

It is designed particularly to be partnered with Musical Fidelity M1/M3/M6 series products or to add top quality phono playback to any system

The M1 ViNL should give many years of outstanding musical reproduction. Dust regularly with a soft duster or soft brush, but be careful when using cleaning or polishing agents - they may harm the surface finish.

If there are any questions about the audio system, please consult the dealer who is there to help and advise.

Section		Page
Safety Information	– Mains plug (UK only), modification warning	3
General advice	– Installation precautions	4
Disposal information	– EU disposal information	5
Installation	– Introduction, cleaning, installation, power connections, audio connections	6
Facilities and connections	– Illustrations - main unit front & rear panels	7
Operation	– Switch on and introduction	8
	– Cartridge characteristics	
	– Choosing cartridge type, RIAA and RIAA/IEC, MM Loading resistor selection, MM loading capacitor selection, MC loading resistor selection, trigger input and output.	9
Problems?	– Basic fault finding	10
Specifications		11
Manual history		12

IMPORTANT! (U.K. only)

This unit is supplied in the U.K. with mains lead fitted with a moulded 13 amp plug. If, for any reason, it is necessary to remove the plug, please remove the fuse holder and dispose of the plug safely, out of reach of children.


It must not be plugged into a mains outlet.

The wires in the mains lead supplied with this appliance are coloured in accordance with the following code:

Green and yellowEarth
Blue..... Neutral
BrownLive

WARNING – This appliance MUST be earthed

As the colours of the wires of the mains lead of this appliance may not correspond with the coloured markings identifying the terminals in the plug, proceed as follows:

- The wire which is coloured green-and-yellow must be connected to the terminal in the plug which is marked with the letter E or coloured green or green-and-yellow, or by the earth symbol: 
- The wire which is coloured brown must be connected to the terminal which is marked with the letter L or coloured red.
- The wire which is coloured blue must be connected to the terminal which is marked with the letter N or coloured black.
- If connecting to a BS1363 plug, a 13 amp fuse must be used.

WARNING:

ANY MODIFICATIONS TO THIS PRODUCT NOT EXPRESSLY APPROVED BY MUSICAL FIDELITY WHO IS THE PARTY RESPONSIBLE FOR STANDARDS COMPLIANCE COULD VOID THE USER'S AUTHORITY TO OPERATE THIS EQUIPMENT.

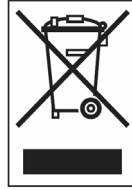
Installation, Precautions & User Information

This new M1 VINL is designed and built to provide trouble-free performance, but as with all electronic devices it is necessary to observe a few precautions:

- Heed all warnings shown on the back of the product.
- The M1 ViNL has a built-in universal power supply that can be connected to mains of between 80 to 253V AC r.m.s. 50-60Hz without modification.
- Always ensure that when disconnecting and reconnecting your audio equipment the mains supply is switched off.
- Position the mains lead and signal interconnects where they are not likely to be walked on or trapped by items placed on them.
- Do not use near water, or place water-filled containers on the M1 VINL, for example, a flower vase or potted plants. **If water does spill inside, immediately pull out the mains plug from the wall socket and inform the dealer, who should then check the unit before further use. Entry of liquid into the M1VINL is dangerous, and may cause electric shock or fire hazard.**
- Do not place the unit near direct heat sources such as radiators, direct sunlight or other equipment.
- Do not remove any covers or try to gain access to the inside. There are no user adjustments or fuses to change without qualification. Refer all service work to an authorised Musical Fidelity agent.
*** Note: Unauthorised opening of the equipment will invalidate any warranty claim.**
- Dust regularly with a soft cloth or soft brush but be careful when using cleaning or polishing agents - they may harm the surface finish.

The electronics in modern hi-fi equipment is complex and may, therefore, be adversely affected or damaged by lightning. For protection of the audio system during electrical storms, remove the mains plugs.

If after-sales service is required, to help the dealer identify the M1 VINL please quote the serial number located on the rear panel of the unit.

**DISPOSAL**

The crossed out wheeled bin label that appears on the back panel of the product indicates that the product must not be disposed of as normal household waste. To prevent possible harm to the environment please separate the product from other waste to ensure that it can be recycled in an environmentally safe manner. Please contact local government office or retailer for available collection facilities.

**DISPOSITION**

La poubelle sur roulettes barrées X, qui apparaît en logo sur le panneau arrière du produit, indique que celui-ci ne doit pas être traité comme un déchet domestique commun. Afin de protéger l'environnement, ce produit électronique devra être géré séparément et donc recyclé selon les nouvelles normes Européennes Rohs concernant les déchets d'appareils électroniques. Prière de contacter les services concernés gouvernementaux ou votre point de vente pour l'élimination et l'enlèvement de déchets électroniques équipés de composants électroniques.

**DISPOSAL**

La etiqueta cruzada hacia fuera del compartimiento que aparece en el panel trasero del producto indica que el producto no se debe reciclar como basura normal de la casa. Para prevenir daños posible al ambiente separe por favor el producto de otras basura para asegurarse de que puede ser reciclada de una manera ambientalmente segura. Entre en contacto por favor a su oficina gubernamental local o a su minorista para las instalaciones disponibles de la colección.

**RIFIUTI**

L'etichetta del cassonetto barrato riportato sul retro dell'apparecchio indica che il prodotto non deve essere smaltito tramite la procedura normale di smaltimento dei rifiuti domestici. Per evitare eventuali danni all'ambiente, separare questo prodotto da altri rifiuti domestici in modo che possa venire riciclato in base alle procedure di rispetto ambientale. Per maggiori dettagli sulle aree di raccolta disponibili, contattate l'ufficio govenativo locale od il rivenditore del prodotto.

**FACHGERECHTE ENTSORGUNG:**

Das auf der Geräterückseite angebrachte Label deutet darauf hin, dass das Produkt nicht mit konventionellem Hauskehricht entsorgt werden darf. Um Schäden und Verschmutzungen an Umwelt und Mensch zu vermeiden, muss das Produkt fachgerecht entsorgt und von anderem Abfall getrennt werden. Wenden Sie sich bei Fragen hierzu an Ihren Fachhändler oder an eine öffentliche Informationsstelle.

**AFVAL**

Het label op de achterzijde van dit apparaat, een afvalbak op wielen met een kruis doorgehaald, geeft aan dat dit apparaat niet samen met gewoon huishoudafval mag worden weggegooid. Om mogelijke schade aan onze leefomgeving te voorkomen dient dit apparaat, gescheiden van gewoon huishoudelijk afval, te worden afgevoerd zodat het op een milieuvriendelijke manier kan worden gerecycled. Neem voor beschikbare inzamelplaatsen contact op met uw gemeentelijke reinigingsdienst of met uw elektronica leverancier.

**HÄVITTÄMINEN**

Yliüksattua jäteastiaa kuvaava tarra tuotteen takalevyssä kertoo, että tuotetta ei saa käsitellä normaalina talousjätteenä. Ympäristön suojelemiseksi on tuote pidettävä erillään muusta jätteestä ja se on kierrätettävä ekologisesti kestäväällä tavalla. Ota yhteyttä laitteen myyjään tai Pirkanmaan Ympäristökeskukseen lähimmän kierrätyskeskuksen löytämiseksi.

**AFSKAFNING**

Logoet med en skraldespand med kryds over på bagsiden af apparatet indikerer at dette produkt ikke må kasseres som normal husholdningsaffald. For at forebygge mulig skade på miljøet, bedes De separere dette produkt fra andet affald, og sikre at det bliver genbrugt på en miljørigtig måde. Kontakt venligst de lokale myndigheder eller din forhandler for oplysning om nærmeste tilgængelige opsamlingssted for elektronikaffald.

**ΔΙΑΔΙΚΑΣΙΑ ΑΠΟΡΡΙΨΗΣ**

ΤΟ ΣΗΜΑ ΜΕ ΤΟΝ ΔΙΑΓΕΓΡΑΜΜΕΝΟ ΤΡΟΧΗΛΑΤΟ ΚΑΔΟ ΑΠΟΡΡΙΜΑΤΩΝ ΣΤΗΝ ΠΙΣΩ ΟΨΗ ΤΟΥ ΜΗΧΑΝΗΜΑΤΟΣ

ΔΗΛΩΝΕΙ ΟΤΙ ΤΟ ΠΡΟΙΟΝ ΑΥΤΟ ΔΕΝ ΠΡΕΠΕΙ ΝΑ ΔΙΑΧΕΙΡΙΣΘΕΙ ΣΑΝ ΣΥΝΗΘΙΣΜΕΝΟ ΟΙΚΙΑΚΟ ΑΠΟΒΛΗΤΟ.

ΠΡΟΣ ΑΠΟΦΥΓΗ ΕΝΔΕΧΟΜΕΝΗΣ ΕΠΙΒΑΡΥΝΣΗΣ ΤΟΥ ΠΕΡΙΒΑΛΛΟΝΤΟΣ, ΞΕΧΩΡΙΣΤΕ ΤΟ ΠΡΟΙΟΝ ΑΠΟ ΤΑ ΑΛΛΑ ΑΠΟΡΡΙΜΑΤΑ ΩΣΤΕ ΝΑ ΕΞΑΣΦΑΛΙΣΘΕΙ Η ΑΝΑΚΥΚΛΩΣΗ ΤΟΥ ΜΕ ΤΟΝ ΠΡΕΠΟΝΤΑ ΤΡΟΠΟ.

ΠΑΡΑΚΑΛΟΥΜΕ ΝΑ ΕΠΙΚΟΙΝΩΝΗΣΕΤΕ ΜΕ ΤΗΝ ΤΟΠΙΚΗ ΥΠΗΡΕΣΙΑ ΑΝΑΚΥΚΛΩΣΗΣ Η ΜΕ ΤΟ ΚΑΤΑΣΤΗΜΑ ΑΓΟΡΑΣ ΓΙΑ ΠΕΡΙΣΣΟΤΕΡΕΣ ΛΕΠΤΟΜΕΡΕΙΕΣ.

Introduction

Congratulations on the purchase of the new M1 ViNL player. This unit will give top quality performance when used as a top quality record player delivering the best performance possible from vinyl recordings.

Cleaning

Before cleaning the unit, switch off power at the mains switch and remove the mains plug from the wall socket. Clean the cabinet and remote control unit using a moist cloth. Using solvents, white spirit or thinners is not advised, as they could damage the surface finish.

Installation

Position the M1 ViNL on a stable, horizontal surface where there is no risk of it being knocked, or subjected to vibration such as from loudspeakers.

Important note:

The M1 ViNL must be protected from humidity – if the unit is moved from a cold place to a warm room, leave the unit for an hour or so to allow sufficient time for the moisture to evaporate.

Please note: Musical Fidelity currently do not make any interconnecting cables, nor do we endorse any particular manufacturer's cables. If required, please refer to the Musical Fidelity dealer who can advise on suitable quality cables for any particular setup.

Power Connections

The M1 ViNL is supplied with a standard IEC mains cable which plugs into the IEC socket at the back of the unit. The unit features a universal power supply that can work anywhere in the world without reconfiguring.

Audio Connections

MM inputs: Connect left and right outputs from turntable/moving magnet cartridge to left and right MM input on M1 ViNL. Use good quality fully shielded and connected (signal and ground) cables for optimum signal transfer and minimum hum.

MC inputs: Connect left and right outputs from turntable/moving coil cartridge to left and right MC input on M1 ViNL. Use good quality fully shielded and connected (signal and ground) cables for optimum signal transfer and minimum hum. If connecting a high output MC cartridge to the MC input results in an excessively high sound output, it is perfectly in order to move it to the MM input and re-select input and loading options accordingly.

Make sure that the cartridge/turntable outputs are connected to the correct INPUTs for MM or MC. High output MC cartridges are catered for in both MM and MC input options.

RCA Outputs: Connect left and right outputs to left and right line input on pre- or integrated amplifier. Use good quality fully shielded and connected (signal and ground) coaxial cables for optimum signal transfer.

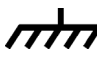
XLR (balanced) outputs: Connect left and right XLR outputs to left and right XLR line input on pre- or integrated amplifier. Use good quality fully shielded and connected (signal and ground) XLR cables for optimum signal transfer.

Trigger Connections

Trigger input: Connect system triggering device output to this socket. Use good quality 3.5mm mono jack cable. Unit accepts 4.5V-15V DC triggering, either polarity.

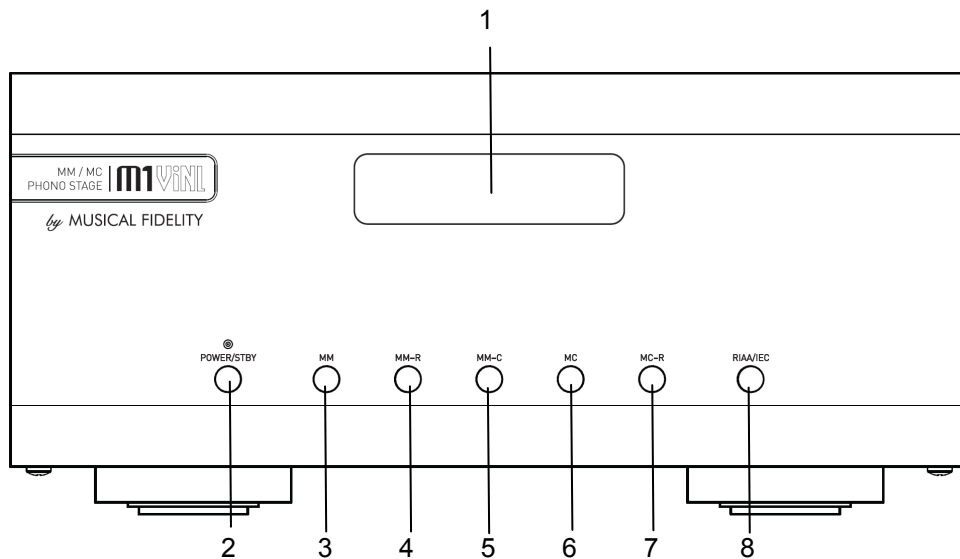
Trigger output: Connect further devices in the system to be triggered into this socket. Use good quality 3.5mm mono jack cable. Unit passes on +12V DC at up to 60mA, for further devices.

Earth Connection

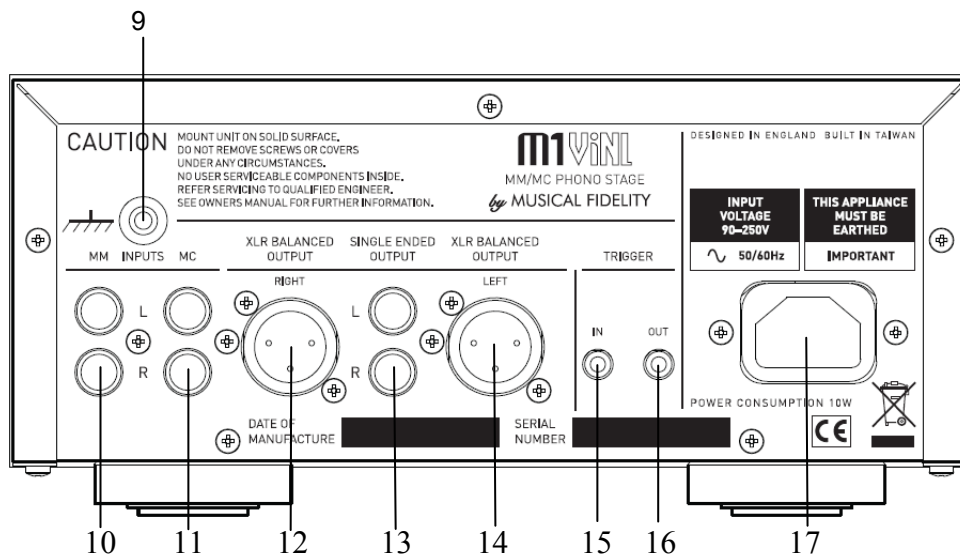
 The green earthing post should only be connected when excessive hum is experienced. Connect the turntable earthing lead to this post if hum is noticed. If hum worsens when this post thus connected, then disconnect immediately and investigate the cause elsewhere.

Note: some systems may have more than one direct earth point(s) already involved. This could cause hum problems that may only become apparent on connecting in this unit. Thus the M1 ViNL may not be the root cause of hum detected in a system.

There is no harm done if *no* connection is made to this terminal, as it is not always needed anyway, for example, some turntables have their own earthing arrangement.



- | | |
|--|---|
| 1 DISPLAY LCD backlit black and white | 5 MM-C MM load capacitor selector button |
| 2 POWER ON/STANDBY button | 6 MC moving coil selector button |
| 3 MM moving magnet selector button | 7 MC-R MC load resistor selector button |
| 4 MM-R MM load resistor selector button | 8 RIAA/IEC response selector button |



- | | |
|--|---|
| 9 EARTH 4mm banana post | 14 XLR BALANCED OUTPUT left |
| 10 MOVING MAGNET input left and right RCA | 15 TRIGGER IN 3.5mm jack input |
| 11 MOVING COIL input left and right RCA | 16 TRIGGER OUT 3.5mm jack output |
| 12 XLR BALANCED OUTPUT right | 17 MAINS INPUT IEC socket |
| 13 SINGLE ENDED OUTPUT left and right RCA | |

Switch on and introduction.

Make sure the unit is fully connected up and plugged into the mains.

Check that the cartridge/turntable outputs are connected to the correct inputs (MM or MC) for the cartridge being used.

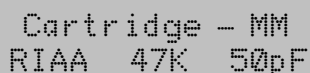
The orange POWER/STBY LED will be lit indicating the presence of mains supply. Press the POWER/STBY button on front panel.

The POWER/STBY LED will go out, and the display should light up and briefly show the product name.



M1 ViNL

Then the display reverts to the current phono option settings for the unit.



Cartridge - MM
RIAA 47K 50pF

Please note: A great deal of effort has gone into making sure that the unit exhibits no loud noises through the system during switching options or on/off. However, once installed into a hifi system, it is still a very high gain (amplification) amplifier at the beginning of a high amplification chain. Therefore, cranking the main amplifier volume to maximum and listening for clicks/thumps is neither recommended nor sensible. With this in mind, it is strongly recommended that the option buttons are only pressed when the volume is turned down (or muted), to avoid any accidental loud transients getting through to the speakers. Once options are set, the volume should then be turned back to normal listening level.

Cartridge characteristics

For setting the various loading characteristics, the cartridge manufacturer's data sheets or setup information should be consulted.

In a lot of cases the settings are not critical, and may even be changed to suit personal preference, if any audible differences are apparent.

No damage will normally occur to an "incorrectly" loaded cartridge; at very worst a slightly impaired or non-optimal frequency response and/or increased distortion may result.

Choosing cartridge type

Select the cartridge being used by pressing the MM or MC button. The display shows current selection and the correct input sockets are automatically switched in.

RIAA and RIAA/IEC

This setting is common to both MM and MC cartridge types.

The -IEC option alters the normal RIAA frequency response by rolling off (reducing) the output at very low frequencies i.e. around 20Hz and below. See chart on P.11 for more information.

This can help to prevent distortion and/or overload of subsequent amplifier/speaker systems by low frequency artefacts such as record warp, surface noise or rumble.

Press the RIAA/IEC button to select IEC response. The display will indicate "IEC" to show that the IEC roll-off is implemented. Press RIAA/IEC button again to display "RIAA" and the output response is now without roll-off.



Cartridge - MM
IEC 47K 50pF

MM loading resistor selection

The load resistor for MM cartridge is selected by pressing MM-R button. There are two options available, 47K (47,000 ohms, or 47KΩ) or 68K.

Press the MM-R button to select 68K. Press MM-R button again to revert to 47K. Choose the option recommended by the cartridge manufacturer. If no recommendation is apparent, start by using the 47K option.

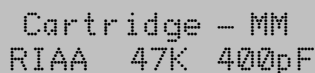


Cartridge - MM
RIAA 68K 50pF

MM loading capacitor selection

The load capacitor for MM cartridge is selected by pressing MM-C button. There are 8 options available, 50pF (pico-farads), 100pF, 150pF, 200pF, 250pF, 300pF, 350pF, 400pF.

Use the MM-C button to cycle through the options, until the closest one to the cartridge manufacturer's recommendation is displayed. If no recommendation is apparent, start by using the 50pF option.

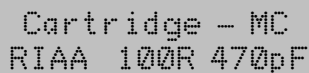


Cartridge - MM
RIAA 47K 400pF

MC loading resistor selection

The load resistor for MC cartridge is selected by pressing MC-R button. There are 10 options available, 10R (also written as 10Ω or 10 ohms), 18R, 25R, 50R, 100R, 200R, 400R, 800R, 1600R, or 47K (also written as 47,000 Ω or ohms).

Use the MC-R button to cycle through the options, until the closest one to the cartridge manufacturer's recommendation is displayed. If no recommendation is apparent, start by using the 1600R option.



Cartridge - MC
RIAA 100R 470pF

There is a 47K setting in MC which is recommended for the higher output type MC cartridges giving out approx 1mV or more. If, however, connecting a high output MC cartridge to the MC input results in a excessively high sound output, it is perfectly in order to move it to the MM input and select input and loading options accordingly.

Note: The MC input capacitor is fixed and cannot be changed. This capacitor does not affect loading at such low impedances.

Trigger input and output

The unit can be triggered to switch on or off remotely by applying a ±4.5 to ±15V DC signal to the 3.5mm (1/8") TRIGGER INPUT from an external triggering device. Any further devices to be triggered on/off may be connected to the TRIGGER OUTPUT jack as it replicates the TRIGGER INPUT signal. This will form a chain of devices that will switch on and off together. N.B. the on/off triggering action works from ANY device in the chain, whether at the beginning, middle or end of the chain.

Basic problem-solving with an amplifier is similar to troubleshooting other electrical or electronic equipment. Always check the most obvious possible causes first, such as the following examples:

Problem	Probable Cause	Remedy
No power	Mains power supply is not fully inserted into mains socket Mains power supply lead is not fully inserted into rear socket	Plug in securely
No sound	Wrong connections between input sources and the unit Cartridge incorrectly wired	Check audio input and output lead connections Check cartridge wiring
Sound too quiet/loud	Cartridge/turntable outputs in wrong input	Use MM input for MM cartridges; MC input for MC cartridges.
Sound is not precise, lacking in bass and stereo image	Cartridge incorrectly wired Input connector plugs not fully pushed in Output connector plugs not fully pushed in	Double-check cartridge wiring using cartridge and turntable manuals/wiring diagrams. Check plugs are inserted fully and securely
Hum	Turntable not earthed or needs earthing Turntable already earthed and earthing further creates hum loop in system Earth loops already in system Audio connector plug not fully pushed in Cable fault Unsuitable Cable (e.g. cable grounds not connected)	Check turntable earthing lead is connected to earthing post on M1 ViNL. Disconnect earthing lead from earthing post. Investigate for earth loops elsewhere in system. Insert plug securely Check cable is connected at both ends. N.B. some esoteric cables have internal wiring intentionally disconnected/modified. For best results on all inputs AND outputs, please use good quality screened coax; <i>fully connected</i> signal-to-signal, screen-to-screen.
Plop or click heard in speakers when switching on or off or changing options	High gain of M1 ViNL, amplifying normal circuit transients.	Not a fault. It is recommended that the volume level on amplifier is turned down if switching the M1 ViNL on or off; or pressing option switches whilst connected.
Distorted sound	Cartridge and/or tone arm not aligned properly Cartridge fault or worn needle Dirt on record	Carefully follow turntable instructions to correctly re-align tone arm and cartridge. Replace needle or cartridge. Clean dust and dirt from record
Distorted and loud sound	Line outputs of M1 ViNL plugged into PHONO amplifier inputs of following amplifier	Use LINE level inputs only, e.g. an AUX input, for the outputs of the M1 ViNL.

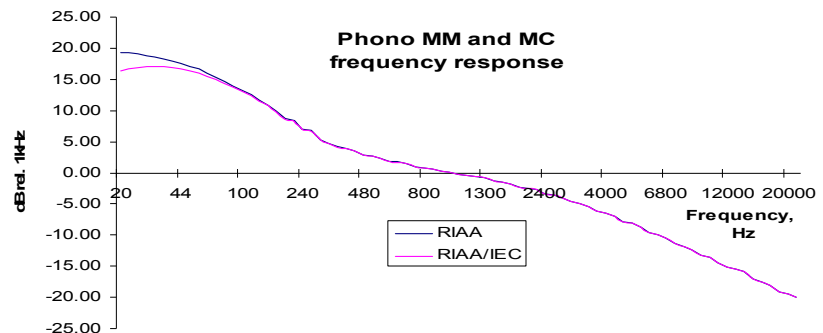
If none of these actions affect a cure, please contact the dealer, or an authorised Musical Fidelity service agent. Remember; never open the case of the M1 ViNL, as this will invalidate the guarantee.

MM input

Frequency response	RIAA or RIAA/IEC (selectable) ± 0.2 dB
Input sensitivity	3mV in for 300mV out (at 1 kHz)
Input impedance	47K Ω or 68K Ω selectable
Input capacitance	50-400pF selectable
THD at 1 kHz	<0.01%
Overload margin	31dB
Signal to noise ratio	>90dB "A"-wtd.

MC input

Frequency response	RIAA or RIAA/IEC (selectable) ± 0.2 dB
Input sensitivity	500 μ V in for 300mV out (at 1 kHz)
Input impedance	10 Ω to 47K Ω selectable
Input capacitance	470pF fixed
THD at 1 kHz	<0.01%
Overload margin	31dB
Signal to noise ratio	>88dB "A"-wtd.



Line level outputs

1 pair RCA (phono)	left and right 300mV nom 10V max
1 pair XLR (balanced)	left and right 600mV nom 20V max

Trigger control

Input	3.5mm (1/8") mono jack ± 4.5 to ± 15 V DC
Output	3.5mm (1/8") mono jack +12V DC

Power requirement

Mains voltages	80-250V AC 50/60Hz universal power supply
Consumption	10 Watts maximum <0.5W in standby (orange LED on)

Weight

Unit only, unboxed	3.5 kg (7 ³ / ₄ lbs)
In shipping carton	4.0 kg (8 ⁷ / ₈ lbs) including accessories

Dimensions

220 mm (8 ² / ₃ ")	Wide
100 mm (4")	High, including feet
300 mm (12")	Deep (front to back) including terminals

Standard accessories

IEC moulded mains lead	10-Amp type
------------------------	-------------

Musical Fidelity reserves the right to make improvements which may result in specification or feature changes without notice. E&OE.



RELEASE	DATE	CHANGES
Issue 1	14th April 2011	1 st issue
Issue 2	12 th January 2012	P.7 indicator 14 corrected.

Free Manuals Download Website

<http://myh66.com>

<http://usermanuals.us>

<http://www.somanuals.com>

<http://www.4manuals.cc>

<http://www.manual-lib.com>

<http://www.404manual.com>

<http://www.luxmanual.com>

<http://aubethermostatmanual.com>

Golf course search by state

<http://golfingnear.com>

Email search by domain

<http://emailbydomain.com>

Auto manuals search

<http://auto.somanuals.com>

TV manuals search

<http://tv.somanuals.com>