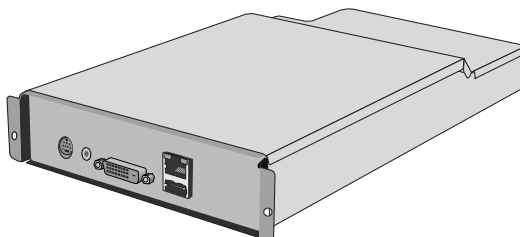


Media Player

(SB-L008KU)

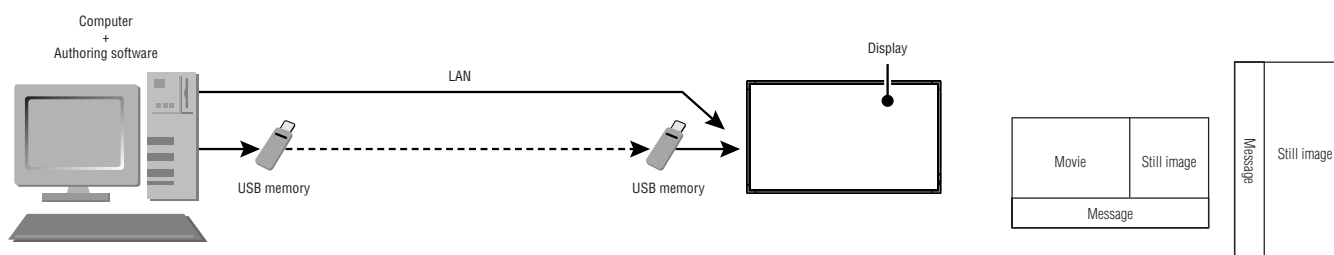
User's Manual Ver.1.10



Introduction

•What is Media Player?

Media Player is a tool for showing programs created from the combination of graphics and sound contents on a display. Programs are created using the attached authoring software and distributed via LAN or USB memory.



•What is Authoring Software?

Layout setting

The desired layout can be set by combining movies, still images, and messages.

Scheduling function

This function displays the program at the designated time. You can set the daily program start and end time or the program start and end time for a particular day.

Distribution function

Program data is distributed via USB memory or to a maximum of 20 Media Players via LAN.

Important Information

This equipment is a Class A Information Technology Equipment certified by the Voluntary Control Council for Interference by Information Technology Equipment (VCCI).

In a domestic environment this product may cause radio interference, in which case the user may be required to take corrective actions.

This equipment conforms to the VCCI standard when the enclosed signal cable is connected.

CAUTION

This device is certified as VCCI class A. When this equipment is attached to a Class B LCD display, the display's VCCI mark will be changed from Class B to Class A.

Refer to the "Safety Precautions, Maintenance & Recommended Use" of the LCD Monitor in the User's Manual for notes on handling.

Declaration of conformity

For USA

FCC Information

1. Use the attached specified cables with SB-L008KU(L008KU) Media Player so as not to interfere with radio and television reception.

(1) Please use a good quality shielded video signal cable.

Use of other cables and adapters may cause interference with radio and television reception.

2. This equipment has been tested and found to comply with the limits for a class A digital device, pursuant to Part 15 of the FCC Rules. These limits are designed to provide reasonable protection against harmful interference when the equipment is operated in a commercial environment. This equipment generates, uses, and can radiate radio frequency energy and, if not installed and used in accordance with the instruction manual, may cause harmful interference to radio communications.

Operation of this equipment in a residential area is likely to cause harmful interference in which case the user will be required to correct the interference at his own expense.

If necessary, the user should contact the dealer or an experienced radio/television technician for additional suggestions.

The user may find the following booklet, prepared by the Federal Communications Commission, helpful: "How to Identify and Resolve Radio-TV Interference Problems." This booklet is available from the U.S. Government Printing Office, Washington, D.C., 20402, Stock No. 004-000-00345-4.

For Canada

Canadian Department of Communications Compliance Statement

DOC: This Class A digital apparatus meets all requirements of the Canadian Interference-Causing Equipment Regulations.

Declaration

Declaration of the Manufacturer

We hereby certify that Media Player
SB-L008KU(L008KU) is in compliance with

Council Directive 2006/95/EC:
– EN 60950-1

Council Directive 2004/108/EC:
– EN 55022
– EN 61000-3-2
– EN 61000-3-3
– EN 55024

and marked with



NEC Display Solutions, Ltd.
4-13-23, Shibaura,
Minato-Ku
Tokyo 108-0023, Japan

Warning

This is a class A product. In a domestic environment this product may cause radio interference in which case the user may be required to take adequate measures.

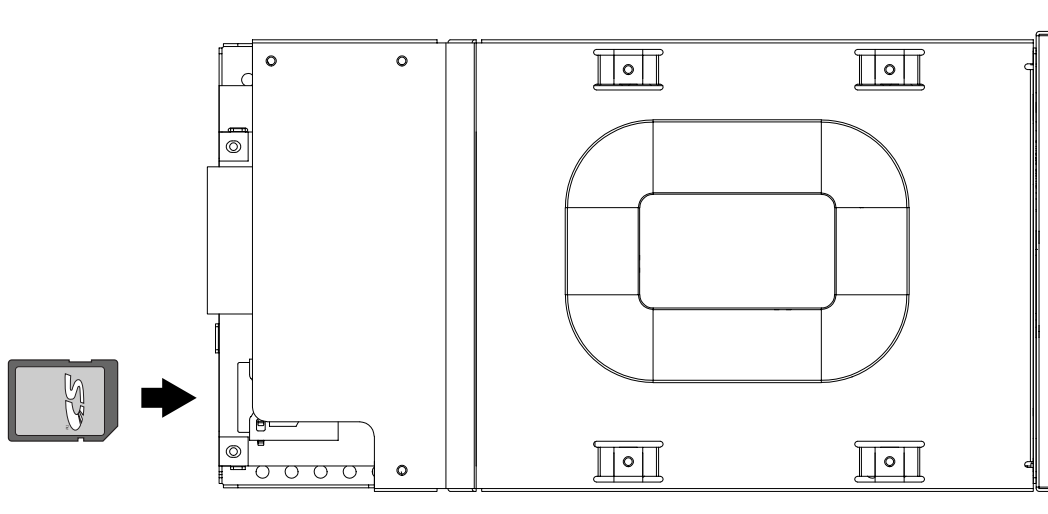
Intel and Intel Pentium are trademarks of Intel Corporation in the United States and other countries. The SD logo is a trademark. Microsoft®, MS, Windows®, PowerPoint®, Windows Media®, Internet Explorer® and the Internet Explorer® logo are registered trademarks or trademarks of the Microsoft Corporation in the United States and other countries. All other brands and product names are trademarks or registered trademarks of their respective owners.

Installation

WARNING:

Do not insert foreign objects inside the cabinet during installation.

1



Insert the enclosed SD Memory Card firmly into the Media Player's memory card connector with the label side facing up.

Caution

Confirm that the write-protect switch is not at LOCK position.

2

Turn off the main power of the Display.
Unscrew the 2 screws (Screw-A) and remove the handle.



3

Unscrew the 2 screws (Screw-B) and remove the cover from the OPTION Slot.



4

Insert Media Player in the Display.



5

Secure Media Player to the monitor with 2 screws (Screw-B).



6

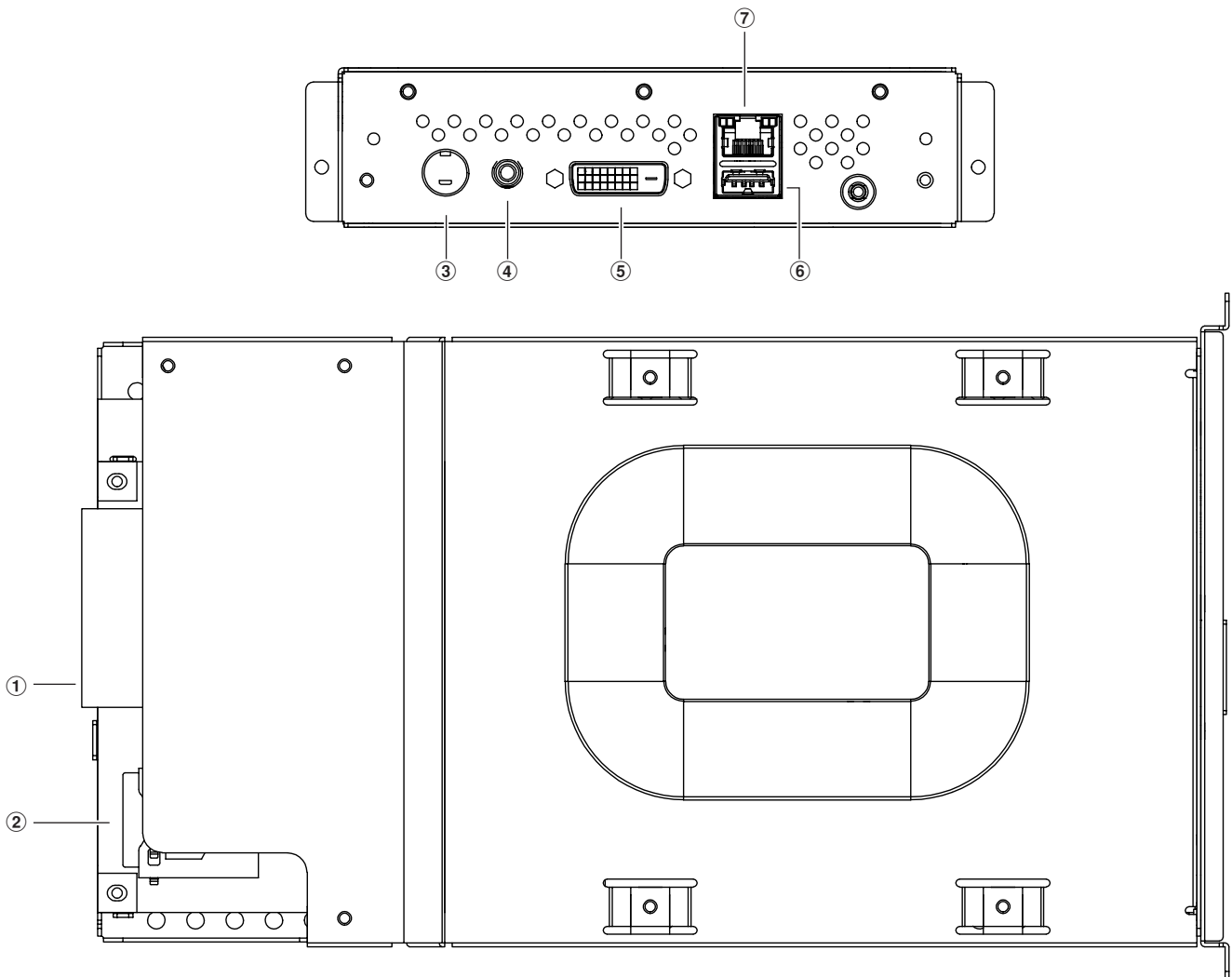
Secure the handle by 2 screws (Screw-A).



Contents

- **Memory card**
- **USB extension cable**
- **Setup guide**
- **Utility discs** (Attached Software and User's Manual)
- **Component input conversion cable**

Terminal panel



① Slot interface

Connector to connect to the display.

② Memory card connector

Insert the enclosed memory card.

③ Video input connector

Connect video devices such as DVD players to distribute movies, telop or still images from the video devices.

Video devices with a component output can be connected with either the S terminal output or the attached component input conversion cable.

④ Audio input connector

Connects the sound output from the video device when using the video input connector.

⑤ DVI output connector (DVI-D)

This is connected to the DVI input connector of the external display.

Media Player images can be displayed on an external display.

NOTE

* Programs using external video images from video input connector cannot be output to the DVI output connector. They can only be output to the display connected to this device.

⑥ USB memory connector

Connects the USB memory containing program data. Use the attached USB extension cable when the connector cannot be easily fitted, such as in difficult to reach locations.

⑦ LAN connector

Connects the LAN cable when program data is distributed via the LAN.

Basic Operation

To operate this device, use the remote control enclosed with the display.

Selecting Media Player

Press the "OPTION" button on the remote.

Opening Media Player OSD menu

When the input signal of the monitor is "OPTION", press the "OPTION" button to turn on/off the Media Player OSD.

Wireless Remote Control

NOTE :

For details about procedures other than those listed below, see the display user manual.

1. POWER button

Switches the power on/standby.

2. OPTION button

Set Input signal to "Media Player". When "Media Player" is set, turn on/off the Media Player OSD.

3. KEYPAD

Enter settings such as date and time.

4. MENU button

Turn on/off the monitor OSD menu.

5. UP/DOWN button

Select setting items at the OSD menu.

6. MINUS/PLUS (-/+) button

Select setting items at the OSD menu.

7. EXIT button

Returns to previous menu within OSD menu.

8. VOLUME UP/DOWN button

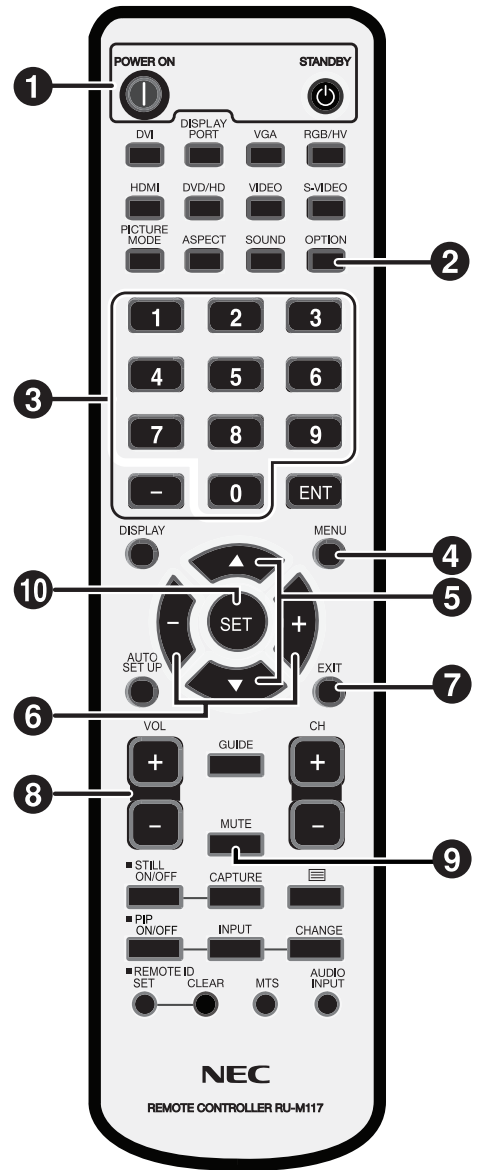
Increases or decreases audio output level.

9. MUTE button

Turn on/off the audio mute.

10. SET button

This button saves the selection on the OSD menu.



Connection

When using LAN, after finishing the "Connection/Setting" in this chapter, refer to the "LAN Connection/Setting" (page 14).

Preparation

In order to use the Media Player to display the program on the Display, the enclosed authoring software, a computer, and a USB memory (if the program is distributed using USB memory) are required.

Authoring software

The authoring software is on the enclosed CD-ROM. Install the authoring software on your computer when using it for the first time. Refer to the authoring software User's Manual for the installation procedure.

USB memory

Encoded USB memory cannot be used.

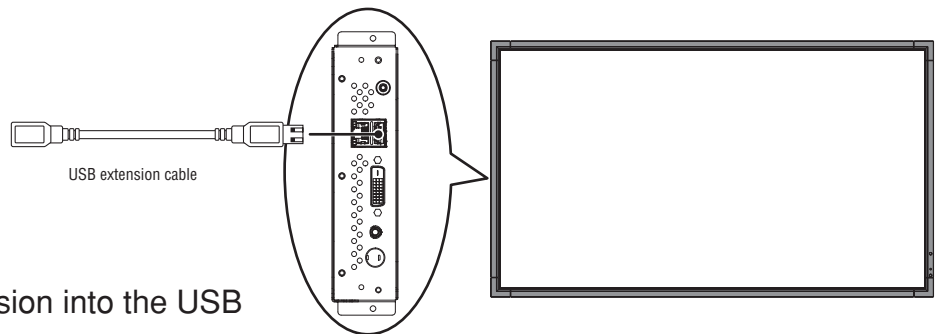
Connection when using USB memory to distribute programs

1. Insert the attached memory card into the memory card connector. (Page 2)

CAUTION:

Insert the memory card with the label side up. Check to make Sure that the write protect switch in riot in the lock position.

2. Attach the Media Player to the display.
3. Insert a USB cable extension into the USB connector.
(When the program is distributed using a USB memory)



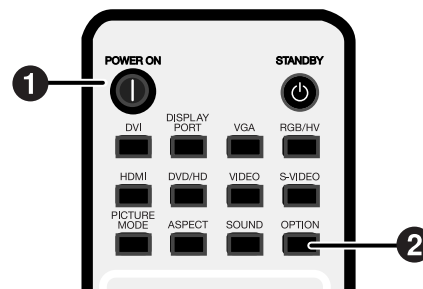
Remote control enclosed with the display



Connection and setting (continued)

Setting the Media Player

1. Turn on the main power supply of the display.
2. Press the “POWER ON” button of the remote control to switch the display on.
3. Press the “OPTION” button of the remote control to select “OPTION” for video input. The Media Player will start up in approximately 1 minute.
4. After the Media Player has started, press the “OPTION” key to display the OSD Menu of Media Player, and carry out settings ① to ④.



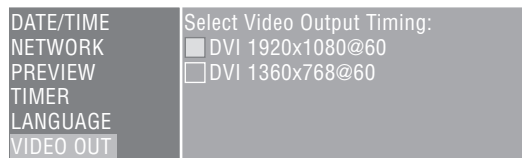
① LANGUAGE setting

Select the language for the OSD menu.



③ VIDEO OUT

Set the “VIDEO OUT” to select the optimal image resolution for the display.



② DATE/TIME setting

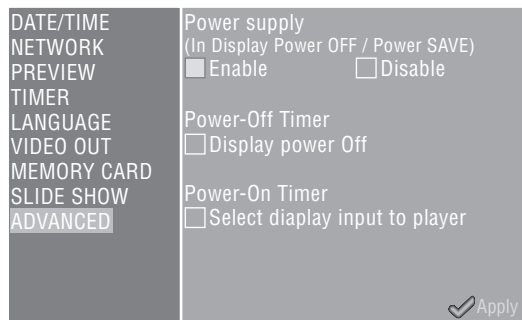
Set the date and time and select the “Apply” button.



④ Media Player’s Power supply

From the “ADVANCED” menu, set the power supply to “Enable” and select the “Apply” button.

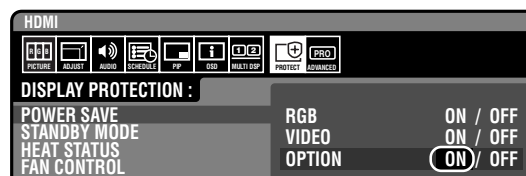
* The factory default setting is “Disable”.



Display settings

Perform steps ⑤ to ⑨.

- ⑤ Switch the display power OFF and then ON again.
- ⑥ Open the display’s OSD menu with the “MENU” button.
- ⑦ Select “STANDBY” from “STANDBY MODE” in the “DISPLAY PROTECTION”.
- ⑧ Select “POWER SAVE” from “DISPLAY PROTECTION”, and select “ON” from “OPTION”.
- ⑨ Close the OSD menu with the MENU button.



Power States and Operations

•Power ON

Press the "POWER ON" button of the remote control. Media Player and the display will turn on at the same time.

Note

The Media Player takes approximately 1 minute to start up after it is turned on. During the start up, a message stating that there is no signal may be displayed on the player.

•Power OFF

Press the "STANDBY" button of the remote control. Media Player and the display both switch off.

•Power Save Mode

When the Media Player is started up in a time slot when the program is not specified, a message "There is no scheduled program at current time." will appear, and after approximately 1 minute, the display will go into power save mode.

The power light of the display blinks in orange.

When a program starts, the device automatically switches from power save mode to power on and the program is displayed.

To display the OSD menu of the Media Player in the power save mode, press the "POWER ON" button of the remote control to turn on the power, and then press "OPTION" button.

Note

The display does not enter power save mode in the following situations.

To display the OSD screen of the Media Player, press the OPTION button.

- When the "Power save setting in the OPTION setting" of the display is set to OFF.
- When Power Supply in the advanced menu of Media Player is set to [Do not supply].

Possible Operations in Power Modes

The following chart shows the possible operations.

O: Enable, X: Disable

Power Modes \ Operations	Power ON	Power OFF	Power save mode
	Green*	Orange*	Flashing orange*
Program distribution via LAN	○	○	○
Scheduled program display	○	×	○

* Power Indicator

How to create program data

Preparing content

First, prepare the content you want to display.

Content files available for use with the authoring software are as follows:

File format		Extension
Still image (JPEG, PNG, BMP)		*.jpg, *.jpeg, *.png, *.bmp
Movie	MPEG1, MPEG2	*.mpeg, *.mpg, *.m2p, *.m2v, *.vob
	Windows Media Video 9	*.wmv
Audio		*.mp3

CAUTION:

Depending on the file, it may not be used. For details, refer to the "Content Specifications."

NOTE:

Data created using PowerPoint® presentation software (*.ppt) can be used on this equipment by converting it to still images (*.jpg, *.png, *.bmp) using the conversion software Viewer PPT Converter on the enclosed utility disc.

However, animations and movies cannot be converted.

Create program data using authoring software

Click on the authoring software in the computer to start the program. For details on how to use authoring software, refer to authoring software User's Manual.

Save the program data created on a USB memory connected to the computer using the distribution function of the authoring software.

Copy the program data on the memory card of the Media Player

1. Prepare USB memory containing program data.
2. Press the “STANDBY” button of the remote control to switch off the power of the Media Player, and then set the USB memory containing the program into the USB cable extension.

NOTE:

If the USB cable extension is not used, set the USB memory directly into the USB memory connector on the main body of the Media Player.

CAUTION:

When the program is updated, the program data in the Media Player will be overwritten. Please be aware that the old program data will be lost.

3. Press the “POWER ON” button of the remote control to switch the Media Player on. The update confirmation screen will be displayed, so press the “SET” button.
The file on the USB memory will be copied onto the memory card in the equipment.

CAUTION:

While the “Now updating... Important!!!” message is displayed, do not remove the USB memory or switch off the power source. The data on the USB memory or memory card may be damaged.

4. After the files are copied, the equipment will automatically restart. After the equipment completes initialization (approx. 1 minute) the update confirmation screen is displayed again. Press the EXIT button and cancel the screen.
5. Remove the USB memory from the USB cable extension.

CAUTION:

The maximum capacity of the program data is 1.8 Gbytes (in the case of the enclosed SD card (2 Gbytes)).

When copying the program data onto the Media Player, make sure the content data capacity in the USB memory does not exceed this size. The maximum capacity of the SD card set in the Media Player can be confirmed on the “MEMORY CARD” of the OSD screen.

The update time of the program data is about 15 minutes (maximum) when the data capacity is 1.8 Gbytes.

OSD

Main Menu	Sub Menu	Description
DATE/TIME	Date	Set the current Date and Time.
	Time	
	NTP Server	This is not used in this equipment.
	Time Zone	This is not used in this equipment.
NETWORK	Static IP/DHCP	Select the IP Address setting method.
	IP	Set the IP Address used when selecting a Static IP. The default setting is (192.168.0.2)
	Netmask	Set the Netmask used when selecting the Static IP. The default setting is (255.255.255.0)
	Gateway	This is not used in this equipment. Leave the default setting at (192.168.0.1)
	DNS	This is not used in this equipment. Leave the default setting at (0.0.0.0)
	MAC	This is the MAC address for this equipment.
	Proxy	This is not used in this equipment. Leave the default setting at (0.0.0.0)
	Update Mode from LAN	Set it to "Push Mode" (default setting). The "Pull Mode" is not used with this equipment.
PREVIEW		Preview the selected program. Select the program to preview on the "Program List". During preview, push any button on the remote control to display the review end menu. The preview will be displayed repeatedly until it is ended up manually. * If the OSD menu is selected while displaying the "Slide Show Mode", the "PREVIEW" is not displayed.
TIMER	Power-ON/Power-OFF	Switches the equipment ON/OFF. If there is program data that set the time for power on/off, the setting of the program data is valid, and the timer setting is void. The time set in the program is displayed.
LANGUAGE		Select the language for the OSD menu.
VIDEO OUT		Select the optimal visual output for the display in use.
MEMORY CARD	Free	This is the remaining area available for use.
	Available	This is the maximum capacity of content that can be used. As a rough guide, it should be about 90% of the memory card capacity. (In the case of the enclosed memory card (2 Gbytes), it is displayed at around 1.8 Gbytes.)
	Delete All Content Files	All content will be deleted.
SLIDE SHOW	Normal Mode	The program is displayed according to the schedule set in the authoring software.
	Slide Show Mode	This sets the mode in which the images (*.jpg, *.jpeg, *.png, *.bmp) on the connected USB memory are displayed continuously in the order of the file names.
	Video Repeat Mode	This sets the mode in which the moving file (*.wmv, *.mpg) on the connected USB memory are displayed continuously in the order of the file names.
ADVANCED	Power supply (Display power OFF/Power save)	Set whether to supply power to Media Player when the display is turned OFF or in power save mode. ■[Enable] Normally, use this setting for most situations. *Display settings are also required. See the "Settings" on page 7. ■[Disable] Neither the power timer function nor program distribution via LAN can be used. *This setting can reduce power consumption when the display is off.
	Power-OFF Timer <input type="checkbox"/> Turn off the display power	■(Enable) Turns off both the Media Player and the display when the timer for the Media Player is OFF. <input type="checkbox"/> (Disable) Turns off the Media Player only when the timer for the Media Player is OFF. *The factory default setting is "Disable".
	Power-ON Timer <input type="checkbox"/> Switch display input to the Media Player	■(Enable) Switches the display input to Media Player when the timer for the Media Player is ON. <input type="checkbox"/> (Disable) The display input will not switch when the timer for the Media Player is ON. *The factory default setting is "Disable".
	Component video input frequency	Select 50Hz or 60Hz according to the component video input source.

Slide Show Mode/Video Repeat Mode

These functions continuously display still image data (*.jpg, *.jpeg, *.png, *.bmp) or movie files (WMV9, MPEG1, MPEG2) in the USB memory in the order of the file names.

The still image data or movie data can be displayed without using authoring software.

How to set the Slide Show Mode

1. Set the USB memory containing the still image data you wish to display in the Media Player.

NOTE:

- Change the name of the folder containing the still images to something other than "media."

2. Select "Slide Show Mode" in the "SLIDE SHOW" item of the OSD menu.
3. The time can be set from 3 seconds to 60 seconds. If it is set to "Manual," the display can be switched using the remote control direction buttons▲, ▼.

CAUTION:

The setting for the display time will become valid after a restart.

4. Press the SET button in "Folder," and select the folder containing the still images you wish to display.

CAUTION:

Folders located lower than 2 levels cannot be selected. The selection of the folder name becomes valid after a restart.

5. Select the "Apply" and select "Yes" on the confirmation screen, and the equipment will automatically restart.

NOTE:

- While displaying still images, press the direction buttons ▲, ▼ and the previous or next still image will be displayed.

How to set the Video Repeat Mode

1. Set the USB memory containing the movie file you wish to display in the Media Player.

NOTE:

- Change the name of the folder containing the movie file to something other than "media."

2. Select "Video Repeat Mode" in the "SLIDE SHOW" item of the OSD menu.

CAUTION:

- Select full screen and the image will always be shown in full screen.

3. Press the SET button in the "Folder," and select the name of the folder that contains the movies you wish to display.

CAUTION:

Folders located lower than 2 levels cannot be selected. The selection of the folder name becomes valid after a restart.

4. Select the "Apply" and select "Yes" on the confirmation screen and the equipment will automatically restart.

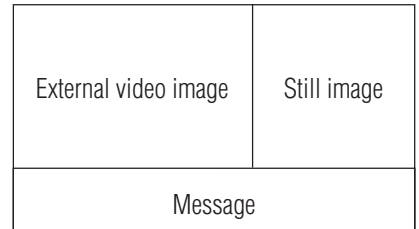
How to release the Slide Show Mode/Video Repeat Mode

1. When displaying the slide show or movie play, press the MENU button on the remote control and display the OSD menu.
2. After selecting "Normal Mode" in "SLIDE SHOW" on the OSD menu, select "Yes" on the confirmation screen and the equipment will automatically restart in Normal Mode.

How to create program data using external video

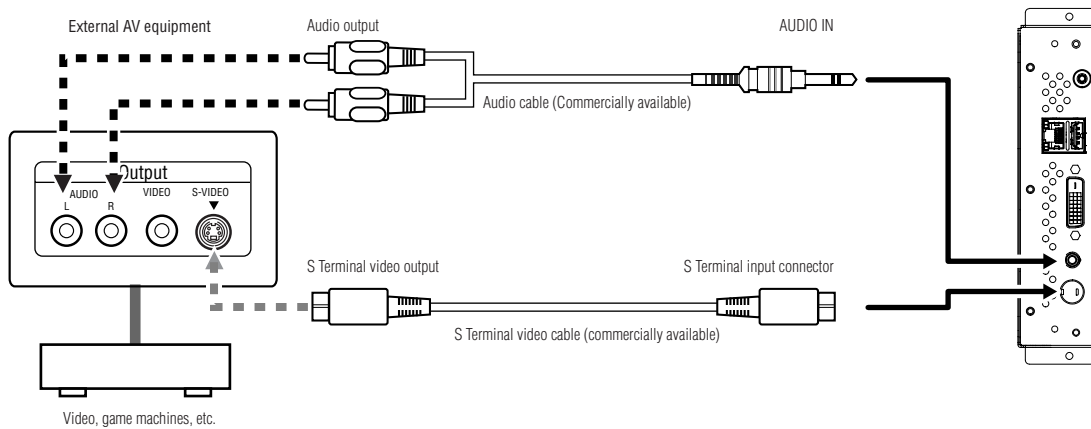
External video image from the S TERMINAL input connector can be displayed with still images and messages. (For details refer to the authoring software User's Manual.)

Program layout example

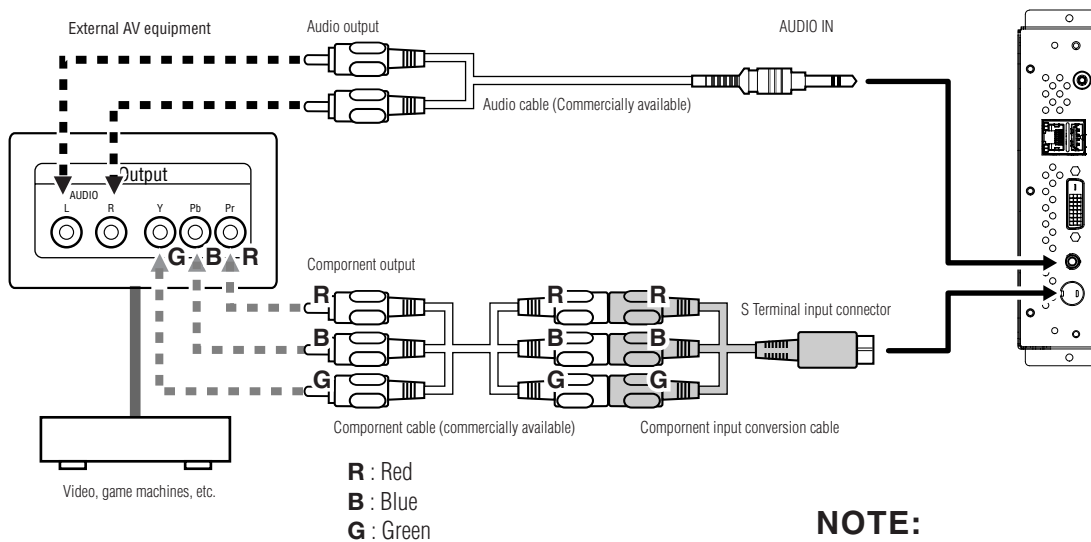


The following shows the connection with commercially available AV equipment.

Connecting to the AV device with an S terminal output



Connecting to the AV device with Component outputs



NOTE:

Programs using external video images cannot be output to the DVI output connector. They can only be output to the display which this device is connected.

LAN Connection and setting

Introduction

When distributing program data via LAN, LAN connection and setting are required.

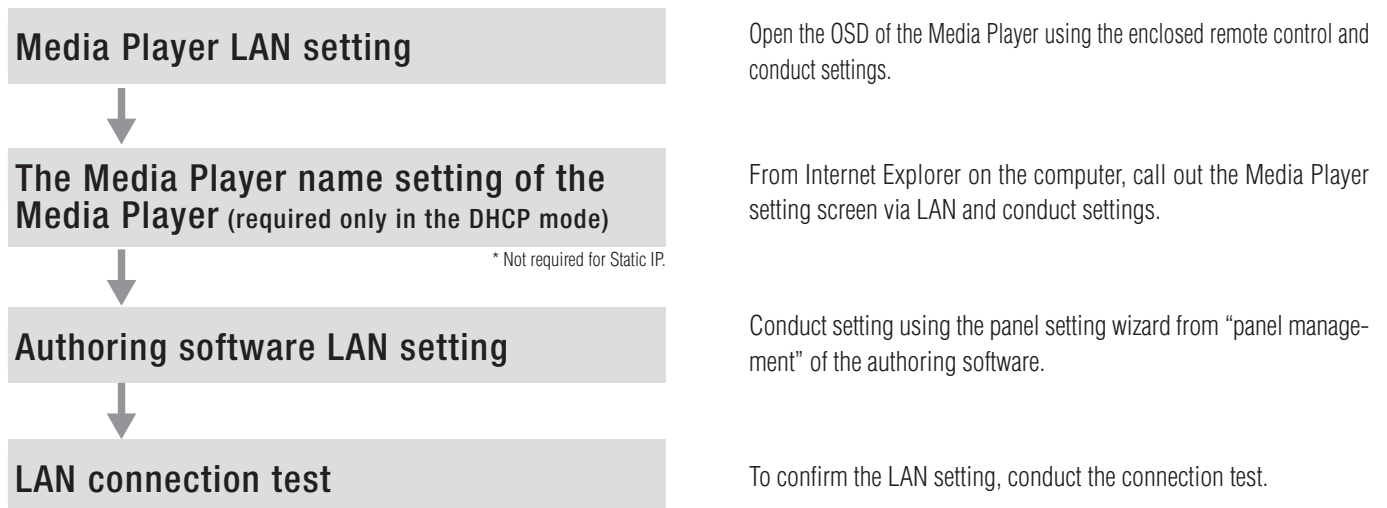
There are two methods for setting the IP Address, one for Static IP Address and one using DHCP servers.

In the case of Static IP Address, refer to “LAN connection/setting: When using Static IP Address,” and when using DHCP server refer to “LAN connection/setting: When using DHCP server.”

NOTE:

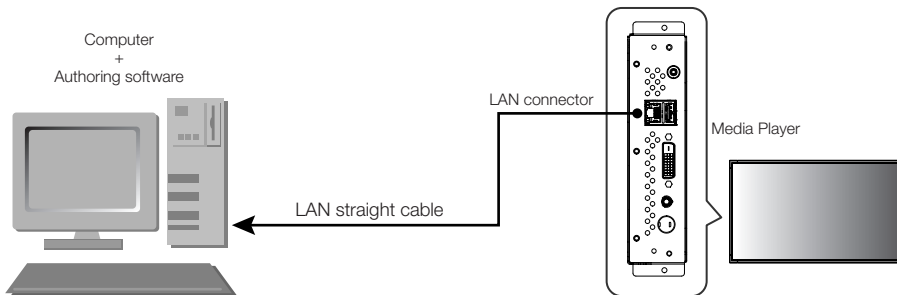
The DHCP server provides IP Addresses to equipment on the NETWORK. Normally, they are built-in with routers.

The procedure for LAN setting is as follows.

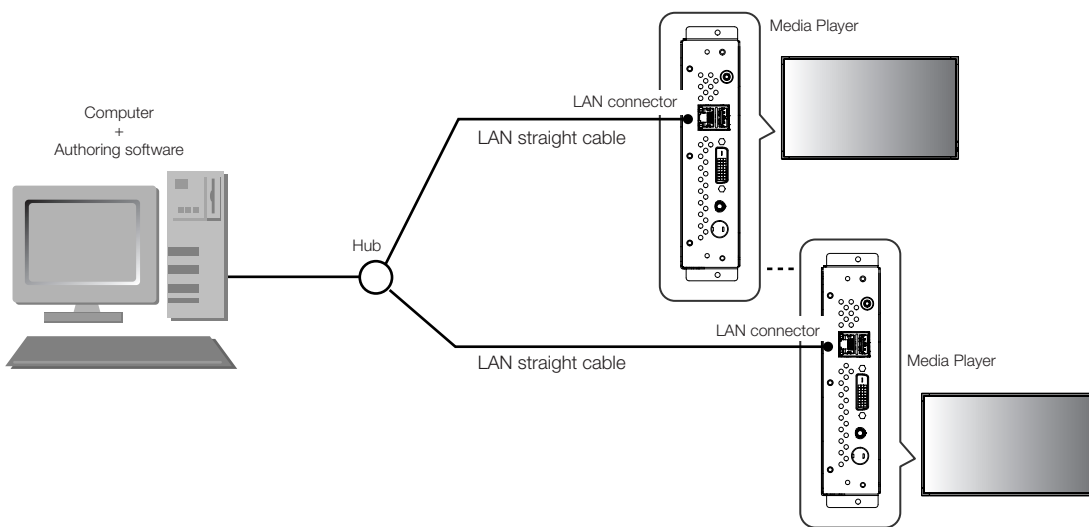


LAN Connection and setting (continued)

•When connecting directly to a computer



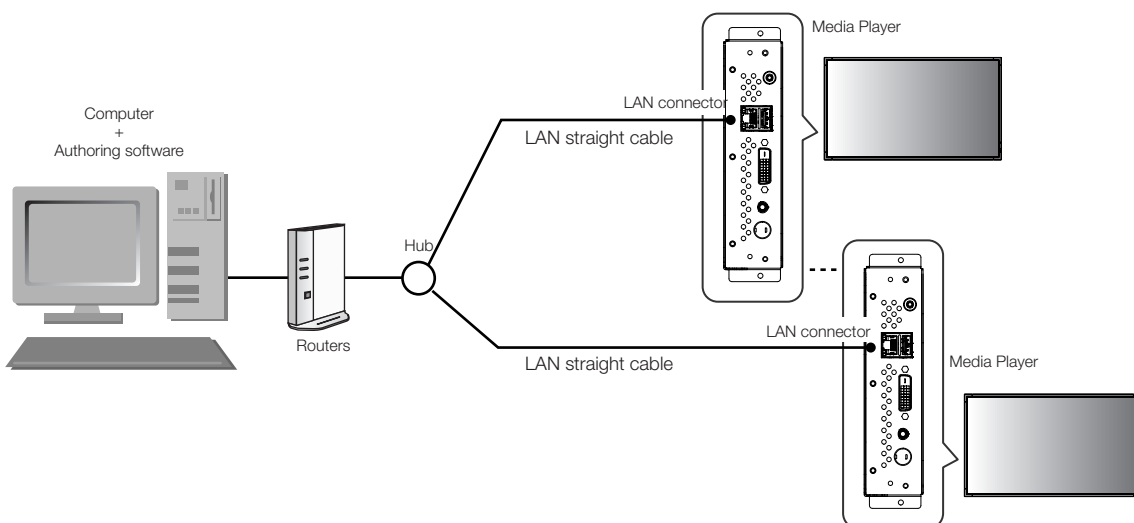
•When connecting with several computers via a hub



•When using a DHCP server (built into routers)

NOTE:

Refer to "LAN connection/setting: Use DHCP servers."



NOTE:

A maximum of 20 Media Players can be connected.

CAUTION:

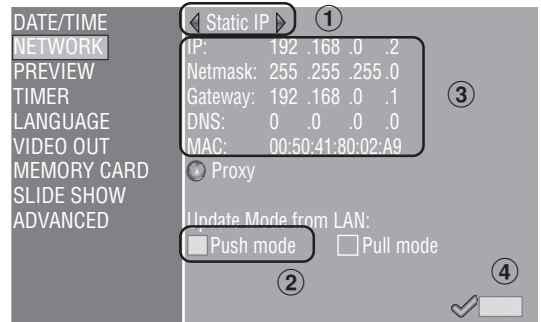
Connect the computer and Media Player to the LAN terminal, not the WAN terminal of the routers.
Use commercially available routers, LAN cables, and hub.
Use LAN cables that are category 5 or higher.

LAN Connection and setting: When using Static IP Address

1. Static IP Address setting of the Media Player

- 1) Switch on the power of the Media Player and Display.
- 2) Display the OSD screen using the menu buttons on the remote control, and open the "NETWORK."
- 3) Set the IP Address.

Static IP Address setting



- ① Use the left and right direction buttons on the remote control to select the "Static IP."
- ② Select "Push Mode".
- ③ Use the number buttons on the remote control and conduct settings as shown in the table below. Write down the set IP Address and keep it for reference.
- ④ Select "Apply".
- ⑤ Close the OSD menu using the EXIT buttons.

IP	Find out the IP Address of the computer, change only the last digit of the address, and set the address with the IP Address that is not the same as other Media Players. Ex) IP Address of the computer: In the case of 192.168.0.10, set the first Media Player as 192.168.0.2. Set the second Media Player as 192.168.0.3.
Netmask	Set the same value as the Netmask of the computer. The default setting is (255.255.255.0)
Gateway	Leave it at the default setting. The default setting is (192.168.0.1)
DNS	Leave it at the default setting. The default setting is (0.0.0.0)

CAUTION:

Set the computer's IP Address according to the network environment.

NOTE:

To confirm the IP Address and Netmask of the computer, startup the "command prompt" (In the Start menu>All programs>Accessories.) in Windows XP/Vista/7 and run C:\> ipconfig.

LAN Connection and setting: When using Static IP Address (continued)

2. Authoring software panel registration

Click the panel list setting button in the “Panel Control” menu of the authoring software.

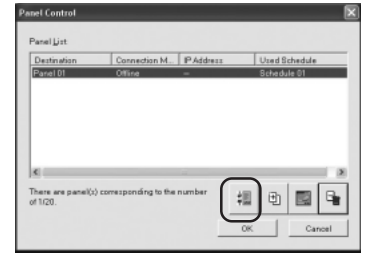
- ① Distribution list setting
If no changes are required, click “Next.”
- ② Set to LAN (Static IP) in the connection type setting.
- ③ Input the IP Address that was set in 1.
- ④ ~ ⑥ Set if necessary and then click “Next.”
- ⑦ Confirm the details of the setting and then click “Complete.”

For all Media Players, implement steps 1 to 7, then reconfirm the setting details in the “Panel Control” menu. Setting is completed.

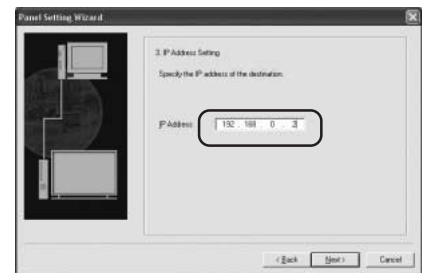
NOTE:

The settings above can be changed in the “Panel Property” of the “Panel Control”.

Panel setting wizard startup button of the authoring software



IP Address setting of the authoring software

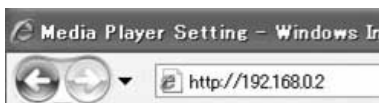


Example: Register 2 Media Players



3. LAN connection test

- 1) Startup the Internet Explorer on the computer, and input the Static IP address set in the authoring software after the “http://” in the address bar.



- 2) If the user name and password screen are displayed, input the user name: default and password: 0000.
- 3) Confirm that the setting screen is displayed.

User name, password screen



WEB setting screen



NOTE:

The Media Player setting can be confirmed on the WEB setting screen.

CAUTION:

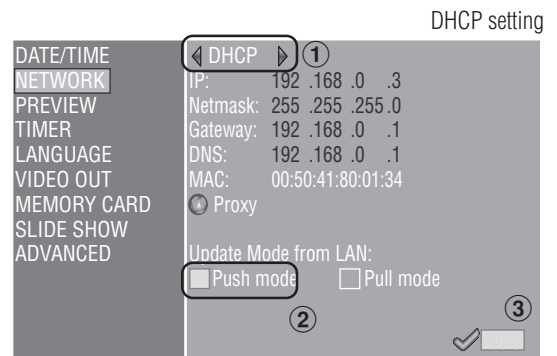
It may not be properly displayed on a browser other than Internet Explorer.

LAN Connection and setting: When using the DHCP server

1. Set the Media Player to DHCP mode.

- 1) Switch on the power of the Media Player, Display, hub, and routers.
- 2) Use the menu button on the remote control to display the OSD screen, and open "NETWORK."
- 3) Set the OSD screen as shown below.

- ① Select "DHCP" using the left and right buttons of the remote control.
- ② Select "Push Mode".
- ③ Select "Apply".



2. Confirm and set the Media Player name

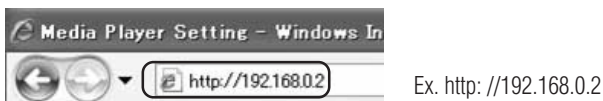
The Media Player name is required in the panel setting of the authoring software.

- 1) Connect the computer, Media Player, and DHCP server (or routers) on the NETWORK, and switch on the power.
- 2) Open "NETWORK" on the OSD screen of the Media Player, confirm that the IP address is properly set on the DHCP server, and keep a memo of the IP address.
(It can be set to anything other than 0.0.0.0.)
- 3) Confirm that the computer's IP Address is set.

NOTE:

IP Address is set when the DHCP is set in OSD or during startup.

- 4) Startup Internet Explorer on the computer, input the IP Address of the Media Player confirmed in 2) in the address bar after "http: // ," and click the "Go" button.
- 5) The input screen for the user name and password will be displayed. Input the username in



one-byte characters and the default password, 0000, then click "OK."

Input the user name and password in the setting screen



CAUTION:

- Prepare routers that have a DHCP server or DHCP server function.
- In the case of routers, make the DHCP server function valid.
- Set the computer's IP Address according to the network environment.

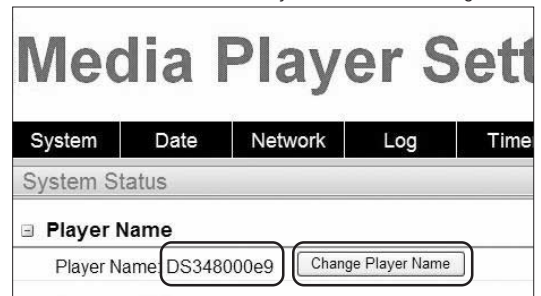
NOTE:

To confirm the IP Address and Netmask of the computer, startup the "command prompt" (In the Start menu>All programs>Accessories.) in Windows XP/Vista/7 and run C:\> ipconfig.

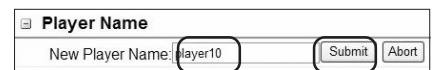
LAN Connection and setting: When using DHCP server (continued1)

- 6) After displaying the setting screen, confirm the Media Player name (player Name).
To change the name, click the Change Player Name button, input the name using 15 or less one-byte characters starting with an alphabet, then click the "Submit" button. (Do not use symbols or spaces.)
Keep a memo of the Media Player name.
- 7) Close Internet Explorer.

Media Player name on the setting screen



Change Media Player Name



CAUTION:

Set it so that it is not the same as other Media Players.
It does not differentiate between uppercase and lowercase alphabets.

NOTE:

The default setting value of the Media Player name is DS34XXXXXX.
XXXXXX is the last 6 digits of the MAC address of the Media Player.
The MAC address can be confirmed in the "MAC" of the "NETWORK" of the OSD.

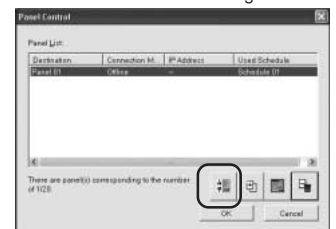
Example

In the case of MAC: 0050418000e9, the Media Player name is DS348000e9.
It can be used without changing the name.

3. Authoring software panel registration

Click the panel setting wizard in the "Panel Control" menu of the Authoring Software, and startup the wizard.

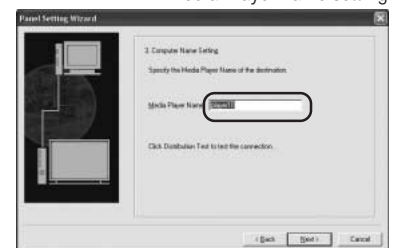
Startup button of the panel setting of the authoring software



- ① Distribution list name setting
If no changes are necessary, click "Next."
- ② Set to LAN (DHCP) in the connection type setting.
- ③ Input the set Media Player name.
- ④ ~ ⑥ Conduct the following settings as required, then click "Next."
- ⑦ Confirm the setting details and click "Complete."

Media Player name setting

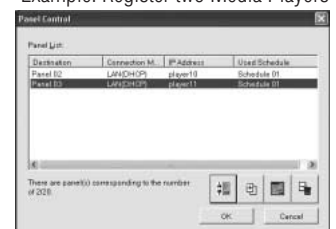
Conduct ①-⑦ for all Media Players.
Reconfirm the setting details on the "Panel Control" menu.
The setting is complete.



NOTE:

The above setting can be changed in the "Panel Property" of the "Panel Control".

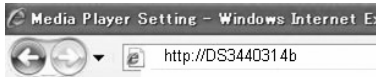
Example: Register two Media Players



LAN Connection and setting: When using a DHCP server (continued 2)

4. LAN connection test

- 1) Startup Internet Explorer on the computer, input the Media Player name set in the authoring software in the address column after the “http://.”



Ex. http: //DS3440314b

User name, password screen



NOTE:

The uppercase and lowercase alphabets in the Media Player name are not differentiated.

- 2) When the user name and password screen are displayed, input “user name: default and password: 0000”
- 3) Confirm that the setting screen is displayed.

NOTE:

The Media Player setting can be confirmed in the WEB setting screen.

CAUTION:

It may not be properly displayed on a browser other than Internet Explorer.

WEB setting screen



Distribute program data to the Media Player

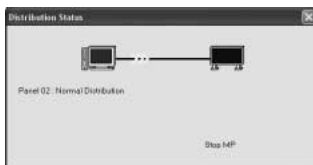
1. Use authoring software to create a program.
Refer to the “SB-L008KU Quick Reference Guide” on the enclosed CD-ROM.
2. Switch on the power to the devices on the network such as Media Players, computers, hubs, and routers.
3. Click the “Distribution” button in the authoring software.
4. Select the recipient (Media Player) in “Distribution List”.
5. Select the program that is necessary.(When selecting the recipient, the program registered in the schedule will be selected.)
6. Click the execute distribution button.
7. The program data will be distributed to the selected recipients on the distribution list. After the program is distributed to all recipients, it will end.

Select recipients and program



NOTE:

The error information and distribution program can be confirmed on the distribution log.



8. When distribution starts, the Media Player will stop displaying the program and receive the program data. While receiving the data, the following message will be displayed.

Content Updating... Please do not power-off.

CAUTION:

- If the data is received while a program is not displayed, the message is not displayed and the screen remains black.

9. After receiving the program data, the Media Player will generate the program data.
10. Media Player will restart (it will take approx. 1 minute), and afterwards, the program will be displayed according to the schedule.

CAUTION:

- Once distribution is conducted, the old programs in the SD Memory Card are erased.
- To distribute a 100 MB program to one Media Player,
 - 1) it takes approx. 1 minute to distribute the authoring software, and 2) 1 minute to generate the program data on the Media Player side after distribution.
*The time differs depending on the performance of the PC and the program details.
 - *After 2), it takes approx. 1 minute for the Media Player to restart.
- Do not switch off the power while the data is being distributed or while the program data is being generated.
- While the Media Player is generating the program data, if you distribute the content from Authoring Software to (the procedures of steps 9. and 10. above), a distribution error will occur. Distribute after the Media Player is restarted.

About distributing the difference of the program data

For programs that are redistributed via LAN in order to reduce time, only the newly added movies, still images, and audio files in the program are distributed.

Program Type	Distribution file
Program to be newly distributed	All files registered in the program
Program to be re-distributed Note 1)	Distribute only the movie, still image, and audio files that were added. Note 2)

Note 1) Redistribution means a program with the same name was previously distributed to the Media Player.

Note 2) The message data and schedule file are always distributed.

Note 3) After distribution, Media Player generates new program from new files and existing files. Unnecessary old files and old programs are deleted.

Maximum program data capacity

For the maximum program data capacity of one Media Player, refer to the table below.

If an insufficient SD card memory capacity error (Error code 441) is displayed during distribution, reduce the program data or increase the SD Memory Card capacity.

Distribution method	Maximum program data capacity	Ex)
USB memory	Within 90% of the SD Memory card capacity Note 1), Note 2)	In the case of 2 Gbytes SD card, up to 1.8 Gbytes.
LAN	As a guideline, it should be less than 45% of the SD Memory card capacity. Note 3), Note 2)	In the case of a 2 Gbytes SD card, up to 0.9 Gbytes as a guideline.

Note 1) The program data capacity is the total of capacity for each program data.

The capacity of one program data is the total capacity of the movie, still image, and audio data registered.

Ex) When the program distributed to one Media Player registers program 1 (still image 1 and movie 1) and program 2 (still image 2 and movie 1), the program data capacity will be the total capacity for still image 1 + movie 1 + still image 2 + movie 1.






Note 2) After distribution, the SD card occupied area can be confirmed in the "Memory Card" items of the OSD.

Note 3) Depending on the structure of the program, the maximum capacity may increase.

Troubleshooting (startup, video audio output, remote control, OSD)

Problem	Condition	Causes and Remedies	Reference page
No power	The power LED on the display is not on.	See "Troubleshooting" in the display User's Manual	—
No images or sound	No images are displayed on the screen.	When no programs are scheduled, the device enters power save mode. When a program starts, the power switches on automatically and the program is displayed.	P8
		Check that OPTION input is selected for the display. It can be selected by pressing the OPTION button on the remote control.	P5
		Check that Media Player is completely inserted into the display.	P3
	No images are output from the DVI output connector	Programs that use external video images cannot be output from the DVI output connector.	P13
No sound	See "Troubleshooting" in the display User's Manual	—	
The remote control is unresponsive		See "Troubleshooting" in the display User's Manual	—
The device does not enter power save mode, when no programs are scheduled.		Check that the power save mode - option setting for the display is ON. When the power supply setting in the advanced menu of the OSD menu is [Do not supply], the device does not enter power save mode.	P7 P11
The timer function is not operating properly.	The device does not power on	Check that the [Standby mode] setting for the display is [Standby]. Check that the [Power supply] setting for Media Player is [Supply].	P7
	The device does not power off	Check that the [Power OFF timer] setting in the Advanced menu is set to [Valid].	P11
During startup, the caution screen is displayed.	The message "It failed to access the memory card" is displayed.	The Memory card may be dislodged. Confirm that the memory card is securely mounted.	P3
	The message "It failed to recover library (.img) file. There is no library file in the memory card" is displayed.	Remove the memory card, and confirm that there is a file with the .img extension on the computer. If such a file does not exist, obtain a file from the enclosed CD-ROM and copy the file.	P26
	The message "There is no scheduled program at current time." is displayed.	Confirm that the date and time setting is correct. Confirm the schedule setting of the authoring tool to make sure there are no errors. If there is an error, correct the schedule and conduct content update.	P7, 11 —
	The message "A content folder is found in USB memory. Press [Set] to update content from USB memory." is displayed.	This is displayed when a USB memory has been mounted. If a content update is not to be conducted, press the EXIT button and remove the USB memory.	—
	The message "Please plug in USB memory for Slide Show mode." or "Please plug in USB memory for Video Repeat mode." is displayed. "There is no file in USB memory for Slide Show mode." or "There is no file in USB memory for Video Repeat mode. Please plug in another USB memory." is displayed.	It is the Slide Show Mode or Video Repeat Mode. Connect a USB memory that contains still images or movies. If you do not wish to use this mode, press the EXIT button and end it, and set the Slide Show Mode or Video Repeat Mode to "Normal Mode" in the Slide Show menu of the OSD screen.	P11, 12
Content cannot be updated	Even when the power is switched on with the USB memory mounted, the message "A content folder is found in USB memory. Press [Set] to update content from USB memory." is not displayed.	Use the computer to confirm that there is a folder named media on the USB memory. If there is no folder named media, use the authoring software to save the program data on the USB memory.	—
		Confirm the connection of the USB cable extension.	P6
		Make sure that the USB memory format is not NTFS format.	—
		Confirm that the USB memory is not encrypted.	—
	The message "No content file is found. Updating is aborted." is displayed.	Use authoring software to save the program data on the USB memory.	—
The message "Content size is too large. Please reduce it then update again." is displayed.	Use the authoring software to reduce the program so the size is smaller. The maximum capacity for content is 1.8 Gbytes (for the enclosed Memory card (2 Gbytes)).	—	
During startup, the slide show starts	It is set to the "Slide Show Mode". While displaying the slide show, press the MENU button to display the OSD menu, change the setting from slide show to "Normal Mode" and then restart.	P11, 12	
OSD timer function will not operate	The timer setting in the OSD menu cannot be set	When power control is set with content update, the timer function becomes void.	P11
The power is switched off automatically.		Confirm that the power control is not set in the TIMER or authoring software. If it is set, release if necessary. For details on releasing power control in the authoring software, refer to the power management section of the authoring software User's Manual.	—
Slide Show Mode or Video Repeat Mode will not operate.	When starting up the power, the message "There is no file in USB memory for Slide Show mode." or "There is no file in USB memory for Video Repeat mode. Please plug in another USB memory." is displayed.	Confirm that there are still images or movies on the USB memory, or confirm the folder setting from "SLIDE SHOW" on the OSD menu.	P11, 12
		Confirm that the still image file or movie file is a file that is supported by Media Player.	P28
		Confirm the connection of the USB cable extension.	P6
		Try a different USB memory.	—
During startup, the confirmation screen for content update is displayed or the existing program is displayed.		Confirm that the "Slide Show Mode" is selected in the "SLIDE SHOW" menu of the OSD screen.	P11, 12

Troubleshooting (program, content display)

Symptoms	Conditions	Cause and measures	Reference page	
The movie is not properly displayed.	The message "The codec in not supported" is displayed, nothing is displayed or  is displayed.	Confirm that the codec of the movie file you are trying to display is supported by this equipment.	P28	
	The message "The codec in not supported" is displayed, nothing is displayed or  or  is displayed.	The file cannot be open or played. The file format may not be supported. Confirm the format details on the "Content Specifications". Or the file may be broken. Confirm that it can be played on the computer.		
	The message "The codec in not supported" is displayed, nothing is displayed or  is displayed.	If the movie bit rate exceeds the maximum value, it will not be displayed. Use the movie editing software to reduce the bit rate. Reference: movies with (movie file size (Bytes)/Play Time (Sec.)) x 8-bit) that is larger than the maximum bit rate will not be displayed.		
	The movie is displayed but the sound does not come out.	Confirm that the audio in the movie file is a file supported by this equipment.	P28	
	When the program is displayed on the Media Player, the movie will not rotate 90 degrees in the vertical layout.	The movies are not automatically rotated in the vertical layout on Media Player. Before using the authoring software, use the movie editing software and rotate the image.	—	
		The movies that include a copyright protection function cannot be played.	—	
The still images are not properly displayed.		The message "The image items are not supported" is displayed, there are images that are not displayed or is displayed.	Confirm that the format of image file you are trying to display can be displayed with this equipment.	P28
			Confirm that the codec of the image file you are trying to display can be displayed with this equipment.	P28
			The file may be damaged. Confirm that it can be displayed on the computer.	—
The Message is not properly displayed.	Nothing is displayed.	Confirm the message setting of the authoring software.	—	
	Specified characters are not displayed.	One-byte "<" and ">" symbols are not displayed. Make the characters two-bytes. A small number of special characters may not be displayed.	—	
	When the vertical layout is selected, specified characters are not rotated.	(=),(,),(" ") are not rotated.	—	
	It takes time for the message to be displayed.	As the number of characters in a message increases, the time until it is displayed becomes longer. It takes about 7 seconds to display 100 characters.	—	
	It takes time for the telop to be displayed.	Set the height of telop less than 30% whole display.	—	
Programs using external video cannot be output to the DVI output connector.		Programs using external video cannot be output to the DVI output connector.	—	
There is nothing displayed between the programs.		When switching the movie, there is about 10 to 20 seconds where there is no image or audio, however this is not an error or malfunction.	—	
It is not displayed according to the schedule setting.		Confirm that there are no errors in the schedule setting of the authoring tool. If there are any errors, correct the schedule and update the content.	—	
		Confirm that the date and time setting are correct.	P7, 11	

Troubleshooting (when using LAN)

Symptoms	Conditions	Authoring software error code	Cause and measures	Reference page
<ul style="list-style-type: none"> • Cannot be distributed. • Cannot be connected with the connection test. 	In the case of Static IP settings	Error code: -1 Error code: 102	Confirm that the IP Address set in the Authoring software is correct.	P16, 17
			Confirm that the network setting of the Media Player is correct.	
			Confirm that the IP Addresses of the Media Players are not overlapped.	
			Confirm the network setting of the computer.	
	In the case of DHCP setting	Error code: -1 Error code: 100 Error code: 102	Confirm that the DHCP servers of the routers are valid.	P18, 19, 20
			Confirm that the Media Player name of the Media Player is correct.	
			Confirm that the Media Player name of the authoring software is correct.	
			Confirm that the Media Player names are not overlapped. * The uppercase and lowercase alphabets in the Media Player name are not differentiated.	
Common Static IP/DHCP setting	Error code: -1 Error code: 100 Error code: 101 Error code: 102	Confirm the LAN cable connection.	P15	
		Confirm that the power of the Router, hub are turned ON.		
		Confirm that the port number is not closed by firewall or security software. This device is used port 137, 138 or 1900 when sending from the Media Player. An optional port is used when sending from Authoring software.		
		Media Player is starting up. Let some time pass before redistributing.		
In case of off-line (when using USB memory)	Error code: 501 Error code: 507	Media Player is updating. Let some time pass before redistributing.	P26	
		The SD Memory Card has insufficient capacity. Reduce the program data or change the SD Memory Card to one with a larger capacity.		
		It may not be able to recognize the USB memory. Load the USB memory again. The USB memory may be coded. It cannot be used by this device. Confirm the capacity of 1 file does not exceed 4G byte of the upper limit.		
The WEB setting screen cannot be opened.	Error occurred when inputting user name and password		Input user name: default, password: 0000	P18, 20
	The Media Player name cannot be set.		Set 15 or less one-byte characters (alphabets or numbers) starting with alphabets. Spaces and symbols cannot be used. After input, click the Submit button.	P18, 19
	The selection button is not displayed.		This may occur when using a browser other than Internet Explorer.	—

NOTE:

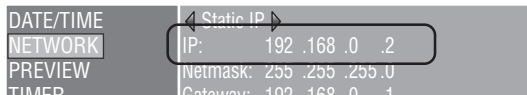
If there is a problem with the connection test, refer to the next page.

Troubleshooting (Using Ping command to conduct a LAN connection test)

If the data cannot be distributed via LAN, use the Ping command on the computer to conduct a LAN connection test.

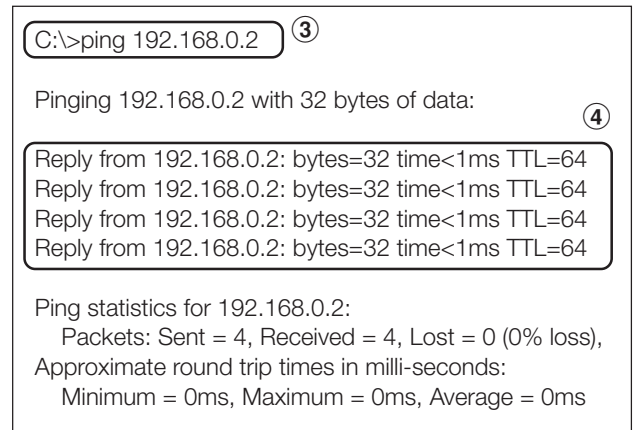
In the case of a Static IP Address

- ① Look up the IP Address in "NETWORK" on the OSD.



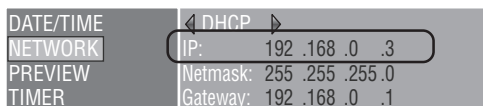
- ② Startup the command prompt in Windows on the computer.
- ③ Enter C: \>ping <IP Address>.
- ④ If a reply is returned, the connection is made.

Command prompt screen

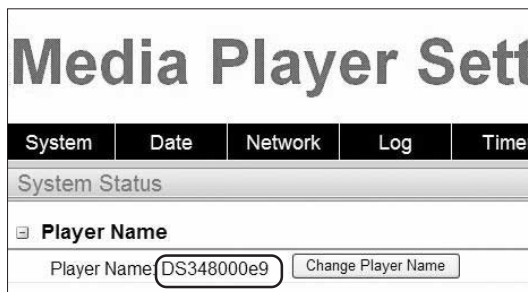


When using a DHCP server

- ① Look up the IP Address in "NETWORK" on the OSD.

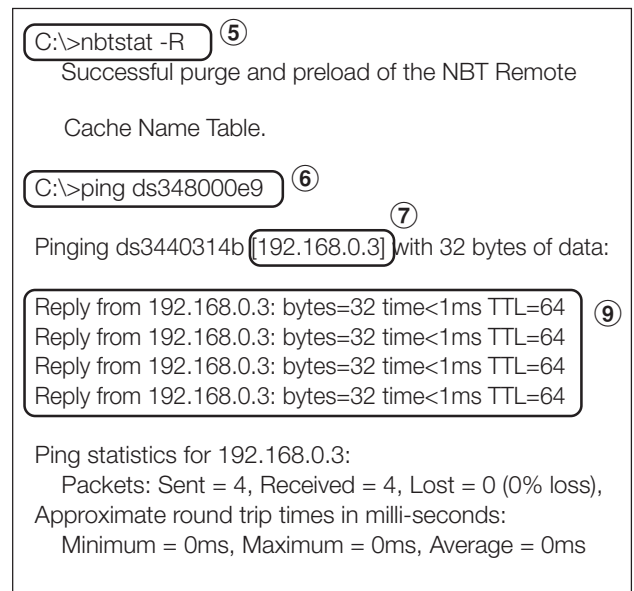


- ② Open Internet Explorer on the computer and enter "http://<IP Address>" in the address bar.
- ③ Confirm the Media Player name when the WEB setting screen is displayed.



- ④ Startup the command prompt in Windows.
- ⑤ Enter C: \>nbtstat-R.
- ⑥ Enter C: \>ping <Media Player name> .
- ⑦ Confirm that an IP Address is displayed.
- ⑧ Confirm that it matches the IP Address in ①.
- ⑨ If a reply is returned, the connection is made.

Command prompt screen



NOTE:

If it cannot be connected, reconfirm the LAN cable connection, Media Player and computer settings, and power supply of the display.
If it can be connected with this test but cannot distribute, confirm that the firewall or security software is not set to block the FTP transmission.

Maximum Play Time for movies

In the case of the enclosed Memory card (2 Gbytes), it would be as follows.

*The Play Time will differ depending on the SD Memory card capacity, and the VIDEO and AUDIO bit rate. Does not include still images and messages.

SD Memory card capacity	bit rate		Play Time (Min.)	Remarks
	VIDEO	AUDIO		
2Gbytes	25Mbps	128kbps	10	1920 x 1080 MPEG2
2Gbytes	10Mbps	128kbps	25	1920 x 1080 WMV9
2Gbytes	6Mbps	128kbps	40	720 x 480 MPEG2

The approximate time can be calculated using the following formula.

Play Time (Sec.) = (SD Memory card capacity (Gbyte) x 0.9) x 1024 (Mb) x 1024 (kb) x 8-bit / ((VIDEO bit rate (Mbps) x 1024 (kb)) + AUDIO bit rate (kbps))

Ex) SD Memory card: 2 Gbytes, VIDEO bit rate: 10 Mbps, AUDIO bit rate: 128 kbps

$(2G \times 0.9 \times 1024 \times 1024 \times 8) / (10 \times 1024 + 128) = 25 \text{ min.}$

Concerning Memory cards

The firmwares (Files with .img extension) are pre-written on the enclosed memory card. If it is mistakenly erased, use the computer to copy the firmware from the firmware_folder in the enclosed CD-ROM to the memory card.

Specifications

SB-L008KU Media Player compatible displays

P401, P461, M401, M406, P521, X431BT, P701

Media Player (SB-L008KU) Specifications

Items		Specifications
Internal interface	Internal image output	Resolution 1920 x 1080 / 60 Hz (factory default settings) 1360 x 768 / 60 Hz
	Audio Output	Analog audio output Line output L/R x 1
	DC power input	+16V
	SD card interface	SD card interface x 1 Maximum capacity: 8 Gbyte (enclosed SD card: 2 Gbyte)
External interface	Visual output (Outputs same signals as internal visual output)	Resolution 1920 x 1080 / 60 Hz (factory default settings) 1360 x 768 / 60 Hz
		Interface DVI-D
	USB memory interface	Compatible with USB memory only. Maximum USB memory capacity: 8 Gbyte
	LAN	Connector : RJ45 x 1, 10/100BASE-TX *Note 1)
	Video input	Connector : Mini DIN 7P S video: NTSC / PAL Component input *1 1080i,720p:60Hz,50Hz, 480p,480i:60Hz, 576p,576i:50Hz
Audio input	Line input L/R x 1, Stereo 3.5ø mini jack	
Time function	backup battery	BR2032 coin-type lithium battery
External memory device	SD memory card	2 Gbyte SD memory card enclosed* Recommended product : listed on our website
	USB memory	Conforms to Interface USB2.0. Separate preparations are required. *Recommended product: listed on our website
Enclosed software	Authoring software	Software to create program data OS : Windows XP, Vista
	Viewer PPT converter	Software to convert PowerPoint files to still images OS : Windows XP, Vista
External dimensions		247.6 (W) x 143.6 (D) x 33.7 (H).
Power supply		DC input +16 V ±5%
Power consumption	Standard	Media Player : 12 W (DC power)
	Standby or power save mode *2	When "Enable" is selected in the "Power supply" display of the OSD "ADVANCED" menu. *3 Media Player : 11 W (DC power) Total power consumption including display: approx. 35 W
		When "Disable" is selected in the "Power supply" display of the OSD "ADVANCED" menu. *4 Media Player : 0 W (DC power) Total power consumption including display: approx. Same as power of display in standby mode
Regulation	Electromagnetic Interference	VCCI-A
Packaging dimensions		Individual box 376.0 mm (W) x 85.0 mm (H) x 225.0 mm (D)
Weight	Device only	1.0kg
	Incl. individual box	1.5kg
Temperature	Operating temperature	0 - 40 °C
	Storage environmental temperature	-10 - 60 °C
Humidity	Operating temperature	10 - 80% (without condensation)
	Storage environmental temperature	10 - 90% (without condensation)

*Note1) Programs using external video images cannot be output to the DVI output connector. They can only be output to the display which this device is connected.

*Note 2) Power save mode
When no program is specified, Media Player goes into power save mode to save power.
To return, press the power ON button to start.

*Note3) In most situations, set [Supply]

*Note4) When set to [Do not supply], neither the power timer function nor program distribution via LAN can be used.

Authoring software specifications

Layout function	Layout the movie file (or video input image), still image file, and message on the screen.	
Create Message	Japanese, English	
Create schedule	<ul style="list-style-type: none"> Set schedule for the created program daily or individually Setting to control power ON/OFF on the Media Player weekly 	
Distributing Programs	Number distributed via LAN: maximum 20 Output to USB memory	
Recommended system requirements	CPU	INTEL Pentium 3 1.0 GHz or higher recommended
	Memory	256 Mbytes or more
	Resolution	1024 x 768, 65,536 colors or more
	Compatible OS	Microsoft Windows Vista Ultimate 32-bit Ver.
		Microsoft Windows Vista Business 32-bit Ver.
		Microsoft Windows XP Professional 32-bit Ver.
Microsoft Windows XP Home Edition 32-bit Ver.		
Others	Microsoft Windows 7 Professional 32-bit Ver.	
	Microsoft Windows 7 Home Premium 32-bit Ver.	
Others	For Windows XP, Microsoft .NET Framework Version 2.0 or 3.5	

Viewer PPT Converter Software Specifications

Source file	Microsoft PowerPoint file (*.PPT)	
Conversion output file	Conversion format: JPEG/PNG/BMP	
	Resolution: Up to maximum 1920 x 1080 dots	
	INTEL Pentium 3 1.0 GHz or higher recommended	
Recommended computer conditions	CPU	256 Mbytes or more
	Memory	1024 x 768, 65,536 colors or more
	Maximum Resolution	Microsoft Windows Vista Ultimate 32-bit Ver.
	Compatible OS	Microsoft Windows Vista Business 32-bit Ver.
		Microsoft Windows XP Professional 32-bit Ver.
		Microsoft Windows XP Home Edition 32-bit Ver.
Microsoft Windows 7 Professional 32-bit Ver.		
PowerPoint	Microsoft Windows 7 Home Premium 32-bit Ver.	
	Microsoft Windows 7 Ultimate 32-bit Ver.	
PowerPoint	One of the following software must be installed. PowerPoint 2000 PowerPoint 2002 PowerPoint 2003 PowerPoint 2007	

Restrictions

- PowerPoint Add-in function
This equipment does not support add-in functions, so do not register them.
- Use the equipment without changing the "Slide switch method" option setting. Even if the "Switching Time" is selected, it will be void.
- Still image format
When selecting a file to output, be sure to select only still image formats supported by this equipment. The formats supported are jpeg, BMP full color, and PNG full color.

Specifications (continued)

Content Specifications

(1) Movie file

Type	Video /Audio	Detailed Specifications	Extension	Maximum capacity /Movie file
WMV9 Note 6)	Video	<ul style="list-style-type: none"> •Codec Windows Media Video 9 (WMV3) •Bit rate Normal resolution (Up to 720 x 480): maximum 20 Mbps High-resolution (1920 x 1080 or 1280 x 720): maximum 35 Mbps •maximum resolution 1920 x 1080 25p (progressive) 1280 x 720 30p (progressive) 	.wmv	FAT16:2Gbytes FAT32:4Gbytes Note 7)
		<ul style="list-style-type: none"> •Codec Windows Media Video 9 Advanced Profile (WMVA) •Bit rate Normal resolution (up to 720 x 480): maximum 20 Mbps High-resolution (1920 x 1080 or 1280 x 720): maximum 35 Mbps •Maximum resolution 1920 x 1080 25p (progressive), 50i (interlace) 1280 x 720 30p (progressive), 60p (progressive) 		
	<ul style="list-style-type: none"> •codec Windows Media Audio 9 (maximum 2ch) Windows Media Audio 9 Professional (maximum 2ch) 			
MPEG1 Note 6)	Video	Codec: MPEG-1 Video	.mpg .mpeg	
Audio	<ul style="list-style-type: none"> •Codec: MPEG-1 Audio layer 2 •Bit rate: Maximum 384 kbps •No. of channels: 2ch •Sampling grade: 16-bit/24-bit, 32 kHz/44.1 kHz/48 kHz 			
MPEG2 Note 6)	Video	<ul style="list-style-type: none"> •Bit rate Normal resolution (Up to 720 x 480): Maximum 20 Mbps High-resolution (1920 x 1080 or 1280 x 720): Maximum 35 Mbps •Maximum resolution 1920 x 1080 25p (progressive), 60i (interlace) 1280 x 720 60p (progressive) 	.mpg .mpeg .m2p .m2v .vob	
	Audio	<ul style="list-style-type: none"> •Codec MPEG-1 Audio layer 2, MPEG-2 Audio layer 2, MPEG-1 Audio layer 3, MPEG-2 Audio layer 3 •Bit rate Layer 2: Maximum 384 kbps Layer 3: Maximum 320 kbps •No. of channels: 2ch •Sampling grade 16bit/24bit, 32kHz/44.1kHz/48kHz 		

Note 1) MP@HL (Main Profile, High Level): Up to 1280 x 720 30p or 1920 x 1080 25p
The following are not supported.

- Complex Profile
- Interface mode
- File created using the WMV9 BETA encoder
- WMV1 or WMV2

Note 2) MP@HL (Main Profile, High Level): Up to 1280 x 720 30p or 1920 x 1080 25p
AP@L3 (Advanced Profile, L3 Level): Up to 1920 x 1080 50i or 1920 x 1080 25p or 1280 x 720 60p
The following are not supported.

- Complex Profile
- File created using the WMV9 BETA encoder
- WMV1 or WMV2

Note 3) MP@HL (Main Profile, High Level): Up to 1920 x 1080 25p or 1920 x 1080 60i or 1280 x 720 60p

Note 4) Files that include copyright protection function cannot be played.

Movies with (movie file size (Byte)/Play Time (seconds)) x 8bit > Maximum bit rate cannot be displayed.

Note 5) WMA files recorded in Windows Media Audio Lossless are not compatible.

Note 6) The movie files that are not compatible with the written specifications will be skipped and the next movie file will be displayed. If there are no other movie files that can be displayed, an error message is displayed. And if the codec of the video is compatible to the specifications, and the audio codec is not compatible, the video is displayed but the audio is not output.

Note 7) It differs depending on the format of the SD memory card.
The enclosed memory card is format to FAT16.

(2) Still image file

Type	Details	Extension	Resolution
JPEG	Supports baseline JPEG	.jpeg, .jpg	<ul style="list-style-type: none"> • One image/screen Maximum 2047 x 2047 dots • Two images/screen Maximum 1920 x 1080 dots or 1080 x 1920 dots
PNG	Supports RGB 24 bit format	.png	
BMP	Supports 24 bpp (bit/pixel) Does not support 8 bpp, 16 bpp, or 32 bpp.	.bmp	

(3) Audio file

Type	Details	Extension
MP3	<ul style="list-style-type: none"> •Codec MPEG-1 Audio layer 2, MPEG-2 Audio layer 2, MPEG-1 Audio layer 3, MPEG-2 Audio layer 3 •Bit rate Layer 2: Maximum 384 kbps Layer 3: Maximum 320 kbps •No. of channels: 2ch •Sampling grade 16bit/24bit, 32kHz/44.1kHz/48kHz 	.mp3

WEEE Mark (European Directive 2002/96/EC)



Within the European Union

EU-wide legislation, as implemented in each Member State, requires that waste electrical and electronic products carrying the mark (left) must be disposed of separately from normal household waste. This includes monitors and electrical accessories, such as signal cables or power cords. When you need to dispose of your NEC display products, please follow the guidance of your local authority, or ask the shop where you purchased the product, or if applicable, follow any agreements made between yourself and NEC.

The mark on electrical and electronic products only applies to the current European Union Member States.

Outside the European Union

If you wish to dispose of used electrical and electronic products outside the European Union, please contact your local authority so as to comply with the correct disposal method.

Software license information

This product contains open source software. For the use conditions of the open source software, refer to the following. Also, refer to the official website of each open source software.

GNU Lesser General Public License (“GNU LGPL”): (“Software license information.pdf” p.3 - p.16)

- DirectFB

GNU General Public License version 2 (“GNU GPL v.2”): (“Software license information.pdf” p.17 - p.26)

- The Linux operation system kernel
- BusyBox
- FreeType
- Wget
- Linux fusion
- Dosfstools

Refer to the page below for information on the license for the following software.

- Intel® SDK for UPnP™ Devices (“Software license information.pdf” p.27)
- Net-SNMP (“Software license information.pdf” p.28 - p.34)
- Thttpd (“Software license information.pdf” p.35)
- Pure-FTPd (“Software license information.pdf” p.36)
- Libjpeg (“Software license information.pdf” p.37 - p.39)
- Libpng (“Software license information.pdf” p.40 - p.43)
- TinyXML (“Software license information.pdf” p.44)

Refer to the page below for information on the copyright for the following software.

- Ntpdate (“Software license information.pdf” p.45)

The software above each has a copyright owner..

This product uses GPL/LGPL application software, and our customers reserve the right to obtain, alter and redistribute the source code of the software in question. Please refer to the URL below to obtain source codes.

<http://www.coretronic.com/digisign/691/index.html>

Free Manuals Download Website

<http://myh66.com>

<http://usermanuals.us>

<http://www.somanuals.com>

<http://www.4manuals.cc>

<http://www.manual-lib.com>

<http://www.404manual.com>

<http://www.luxmanual.com>

<http://aubethermostatmanual.com>

Golf course search by state

<http://golfingnear.com>

Email search by domain

<http://emailbydomain.com>

Auto manuals search

<http://auto.somanuals.com>

TV manuals search

<http://tv.somanuals.com>