

NP03Wi Interactive White Board Kit

## **SOFTWARE MANUAL**

---

This manual describes installation and operation procedures of the driver / the calibration software for NP03Wi Interactive White Board Kit

## Operating Environment

Supported OSs are as follows:

Windows 7, Windows 8/8.1

\* For starting up the software, Microsoft .NET Framework 4 or later is required.

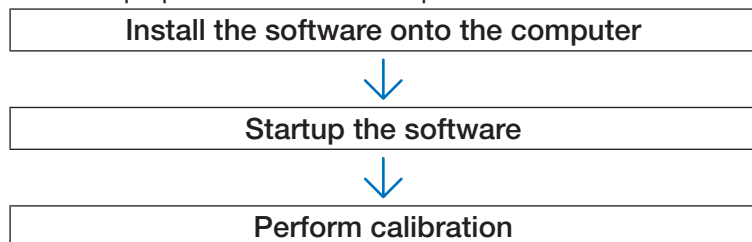
Download the Microsoft .NET Framework from the website of Microsoft and install it onto the computer.

## About trademarks

Microsoft, Windows, .NET Framework are either registered trademarks or trademarks of Microsoft Corporation in the U.S. or other countries.

## Setup Procedure

Perform setup operations in below steps:



## Install the Software onto the Computer

### IMPORTANT

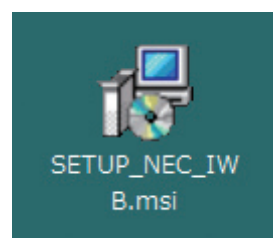
- When installing / uninstalling the software, you must log on the computer with Administrator's privileges.
- Before starting to install the software, quit all application software in running. If other application software is remained in running, installation may not be completed properly.
- If the displayed language on your OS is not one of correspondent languages for this software, all indications are displayed in English

## How to install this software

1. Download the software.

Access to our projector support page in our website with the below URL: <http://www.nec-display.com/dl/en/index.html>

Find the software for the Interactive White Board Kit, NP03Wi, download and install it onto the computer according to the displayed instructions.



2. Double click [SETUP\_NEC\_IWB.msi].

The Setup window is displayed.

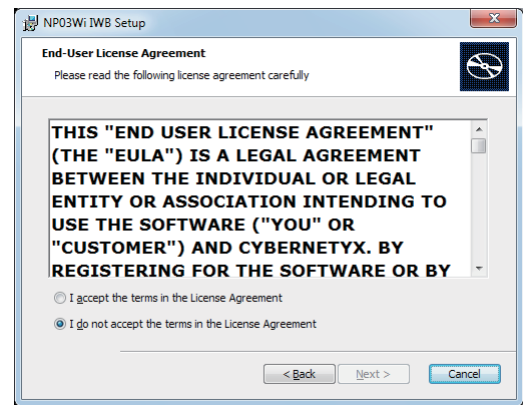
3. Click [Next>].

Displays the Terms of Use screen.



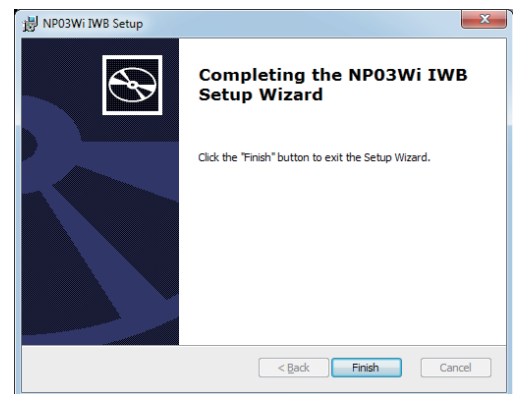
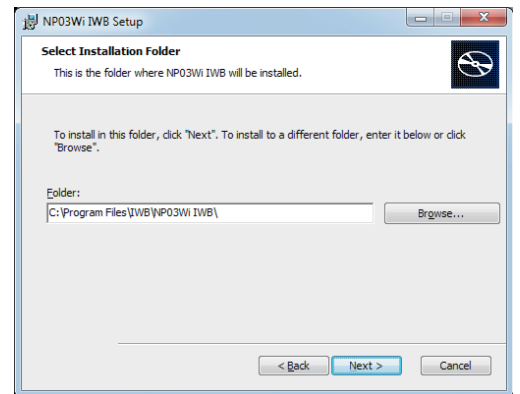
4. Select "I accept the terms in the License Agreement" and click "Next >"

Displays the selection screen of the installation destination folder.

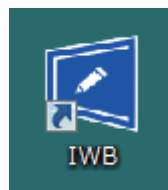


5. Click [Next>].

After that, follow the displayed instructions to complete installation.



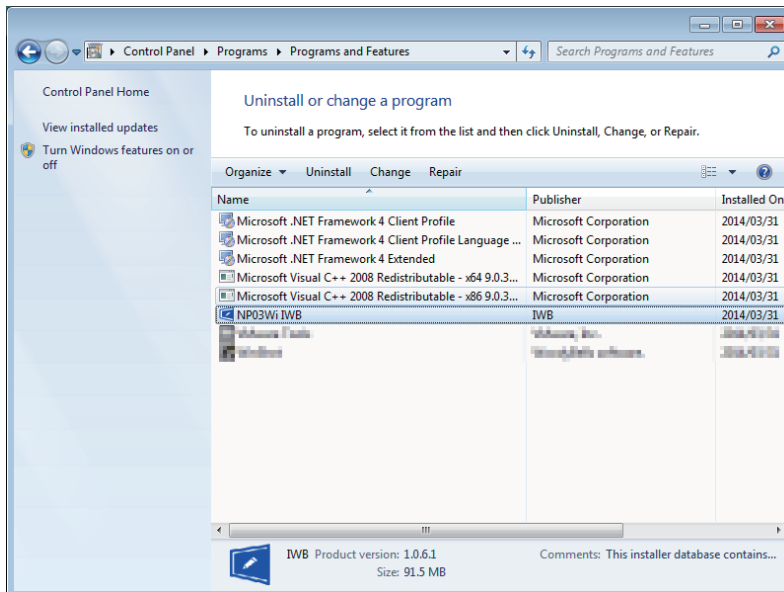
When the installation is complete, an IWB icon is added to the desktop.



## How to uninstall the software

1. Click [Control Panel] in the start menu, and double-click [Add or Remove Programs].
2. Right-click [NP03Wi IWB] and click [Uninstall] in the list.

After that, follow the displayed instructions to complete uninstallation.



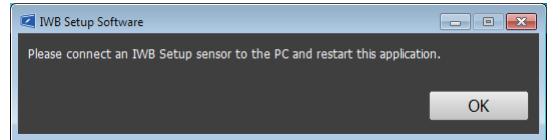
3. When uninstallation is completed properly, reboot the computer.

# Startup the Software

## Preparation:

- First of all, perform setup according to the installation manual enclosed with NP03Wi.

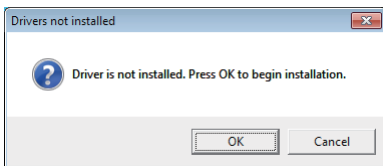
If the computer and the camera unit are not connected by a USB cable, the message at right would be displayed on and the software would not be started up.




- For starting up the software, Microsoft .NET Framework 4 or later is required. If Microsoft .NET Framework is not installed on the computer, visit the website of Microsoft for download and install it on the computer.

## 1. Double click the IWB icon on the desktop.

Driver installation message is displayed on.



Click "OK" and follow the displayed instructions for the sequel operations.

When driver installation is completed properly, IWB Setup Software is automatically launched and  icon is created in the task tray. Clicking this icon, IWB setup menu is displayed on the screen.

## Calibration Menu Display

Indicate connection status of the camera unit and the computer

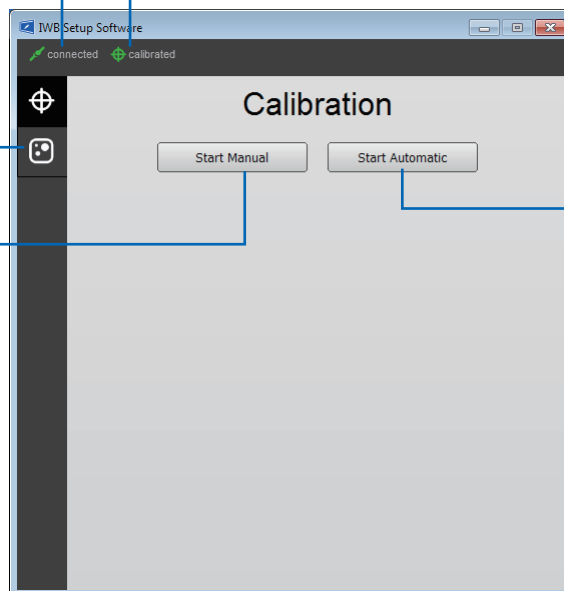
Indicate status of the stylus pen.

[Calibrated]: The stylus pen is ready to use

[Not calibrated]: Cannot use the stylus pen because calibration is not performed, or the trouble shooting is displayed on

Switch to the troubleshooting screen

Perform manual calibration

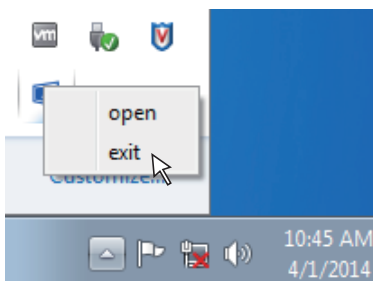


Close IWB Setup Menu.

\* The software will continue to run.

Perform automatic calibration

Right click  icon in the task tray and select [Exit] for finishing IWB.



# Performing Calibration

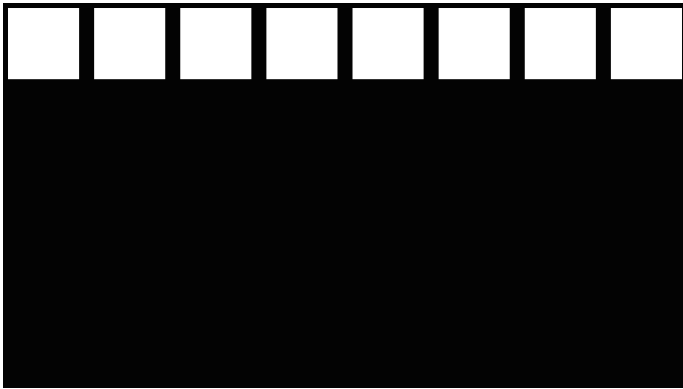
Before starting to use the stylus pen, make sure to perform calibration in order to make the computer to recognize exact position of the stylus pen.

Automatic calibration	Automatically calibrate the stylus pen position. Recommend this when easy calibration is preferred.
Manual calibration	Manually calibrate the stylus pen position. Recommend this for installing the projector permanently or when precise calibration is preferred.

## Perform Calibration Automatically [Automatic Calibration]

Click the [Start Automatic] button on the displayed calibration menu.

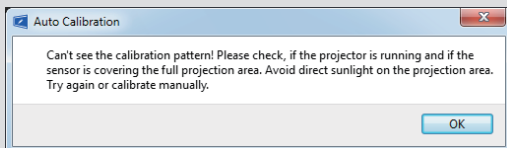
Projected image on the screen will be switched to the Automatic Calibration Screen.



After five to eight seconds, calibration will be completed and the screen will return to display the projected image.

### Note:

- If the message in below is displayed on the screen, refer to the Troubleshooting on page 7 and check if the screen is installed within the recognition area of the camera and if the camera and the screen get influence of external light.



## Perform Calibration Manually [Manual Calibration]

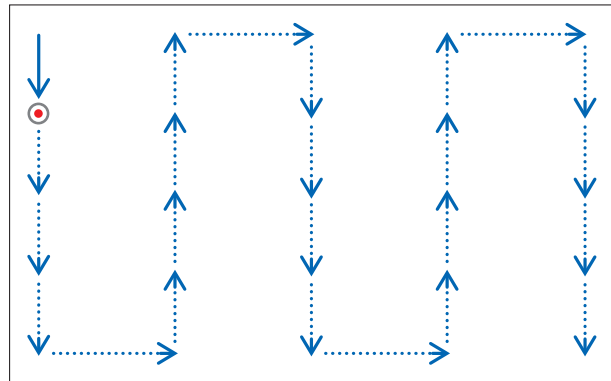
1. Click [Start Manual] button on the displayed calibration menu.

Projected image on the screen is switched to the Manual Calibration Screen and red dot  is indicated at the top left on the screen.



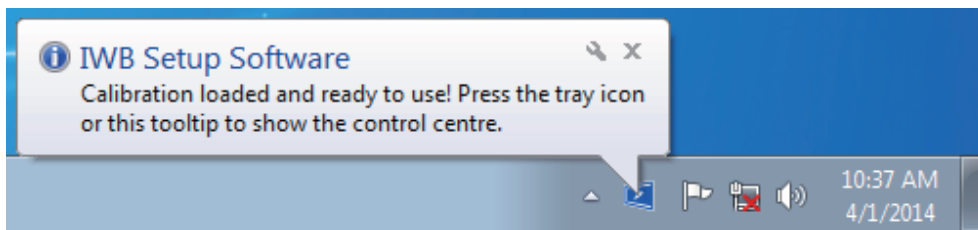
2. Press the center of the red dot with the stylus pen.

The red dot is indicated at 25 points in order on the screen.



When all points indicated by the red dot are pressed by the stylus pen, calibration is completed and the calibration completion message is displayed on.

3. Touch  icon in the task tray by the stylus pen.



This message is popped up when calibration is completed properly.

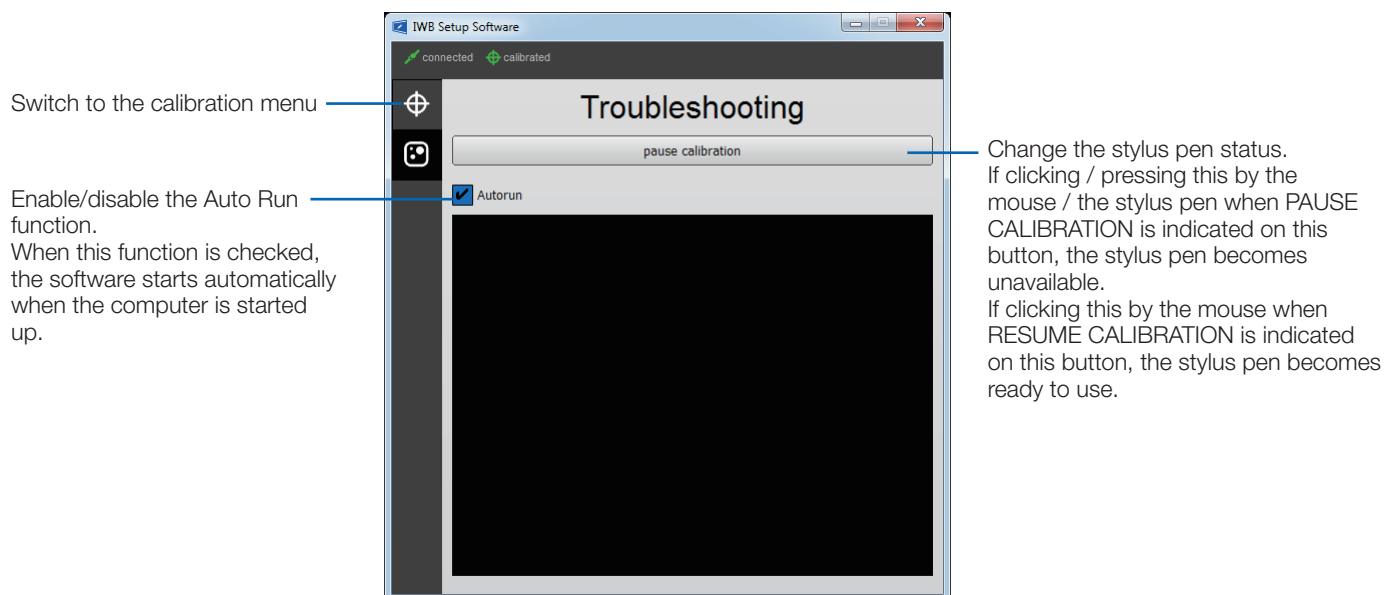
**Note:**

- When “Auto Run” in the troubleshooting screen is checked, the software starts automatically when the computer is started up.
- Drawing software is required to use the interactive white board function.  
Drawing software cannot be downloaded from our projector support page, prepare commercially available drawing software.

# Troubleshooting

You can check the installation condition of the camera unit when the troubleshooting in the IWB setup menu is displayed on.

## Troubleshooting screen



- **Check the camera recognition area**

Press four corners of the projection screen by the stylus pen.

A red square is indicated on the troubleshooting screen and it can be checked all area of the screen surface is in the camera recognition area.

- **Check influence of external light**

If the camera and/or the screen is exposed to strong light, it may cause of malfunction because the computer cannot recognize the stylus pen. If a red square is indicated on the screen without touching the screen by the stylus pen, it means the camera and/or the screen get influence of external light. In this case, change the place to install them avoiding to receive direct sunshine or strong light.

## Others

<p>The stylus pen does not work.</p>	<ul style="list-style-type: none"> <li>• Have the driver and the calibration software been installed on the computer?</li> <li>• Is the USB cable connected between the computer (type A USB port) and the camera unit (type B USB port)?</li> <li>• Does the stylus pen have proper charge? If red LED is not turned on by pressing the pen tip, charge the stylus pen.</li> </ul>
<p>Lines traced with the stylus pen do not match lines indicated on the screen.</p>	<ul style="list-style-type: none"> <li>• Has calibration performed properly?</li> <li>• If it does not solve the problem by performing automatic calibration, try to perform manual calibration.</li> </ul>



## Free Manuals Download Website

<http://myh66.com>

<http://usermanuals.us>

<http://www.somanuals.com>

<http://www.4manuals.cc>

<http://www.manual-lib.com>

<http://www.404manual.com>

<http://www.luxmanual.com>

<http://aubethermostatmanual.com>

Golf course search by state

<http://golfingnear.com>

Email search by domain

<http://emailbydomain.com>

Auto manuals search

<http://auto.somanuals.com>

TV manuals search

<http://tv.somanuals.com>