

NAVMAN

# iCN 500 series

with SmartST™ 2005

## *User Manual*

iCN 510

iCN 520





# Contents

Box Contents .....	5
1. Introduction .....	7
2. iCN Features .....	8
3. Positioning the iCN in a Vehicle .....	12
4. Starting Your iCN .....	14
5. Memory Card .....	18
6. Changing Language .....	18
7. GPS Status .....	20
8. Setting your Destination .....	21
By Address - Europe and New Zealand .....	24
By Address - Australia, Canada and USA .....	28
By POI - Europe and New Zealand .....	32
By POI - Australia, Canada and USA .....	35
9. Using the <i>2D Map</i> Screen to Plan a Route .....	38
10. Multi-stop Trips .....	39
Europe and New Zealand .....	39
Australia, Canada and USA .....	44
11. Viewing Your Route .....	50
12. The <i>2D Map</i> Screen <i>Pop-up</i> Menu .....	55
13. Avoiding an Area .....	56
14. Route Demonstrator .....	57
15. Favourites and My Home .....	59
16. Preferences .....	64
17. SmartST Desktop .....	78
18. Updating your iCN .....	80
19. Installing Maps Using SmartST Desktop .....	81
20. Installing a Language on Your iCN 510 .....	84
21. Continuous Continental Navigation .....	86
22. SmartST Desktop Advanced Features .....	88
23. Accessories .....	93
Appendix: Street Types .....	94
Support Information .....	97
Compliance .....	97
Copyright .....	97



Thank you for purchasing this Navman iCN. We hope you enjoy your new GPS transferable navigation system. This user manual will help you Drive-Away™ with your iCN, straight out of the box. Navman welcomes your feedback. To contact us or visit our website, see *Support Information* on page 97.

## Box Contents

Purchasers of SmartST 2005 software-only upgrade kits, see the enclosed *Upgrade Guide* for your *Box Contents*.



### CD-ROMs, including:

- SmartST™ 2005 software including SmartST Desktop
- Map data
- User Manual (PDF format) and Adobe® Reader®

*Note: The number of disks varies with country of purchase.*



### Documentation, including:

- User Manual
- In-Car Installation Guide
- Software Product Licence/  
Limited Warranty Agreement
- Registration Card



# 1. Introduction

Whether you travel in your own country or elsewhere, the iCN will direct you to your destination without the need for map-books and second-hand instructions.

The Global Positioning System (GPS) is available free of charge, at any time, and is accurate to within 5 m (15 ft). Your iCN map provides street-level detail for door-to-door navigation, including Points of Interest (POIs) such as accommodation, petrol stations, railway stations and airports.

Use this manual to learn how to operate your iCN efficiently and safely, and discover all the different features available to you.

## GPS and GPS Signals

The Global Positioning System is a network of satellites that transmit accurate time and position information worldwide. GPS receivers receive signals from these satellites and use the information to determine an exact location. Satellites orbit the earth at around 12,000 miles. While a GPS receiver can detect signals from up to 12 satellites at any time, only three signals are needed to provide a position or "GPS fix" (latitude and longitude) for vehicle navigation systems.

The iCN GPS antenna receives GPS signals. To receive GPS signals, ensure that the iCN is outdoors, or in a vehicle outdoors, and the GPS antenna has an unobstructed view of the sky. The iCN can operate in all weather types except snowfall.

*For details about GPS and your iCN, see page 20.*

## Safety Notice

**WARNING:** In a vehicle, it is your sole responsibility to place, secure and use the iCN in a manner that will not cause accidents, personal injury or property damage. The user of this product is solely responsible for observing safe driving practices. It is your responsibility to read and follow the vehicle mount installation instructions and to use the product consistent with your government's laws/regulations. Consult the vehicle manual to ensure the mounting location is safe.

It is your sole responsibility to adhere to the following safety instructions at all times:

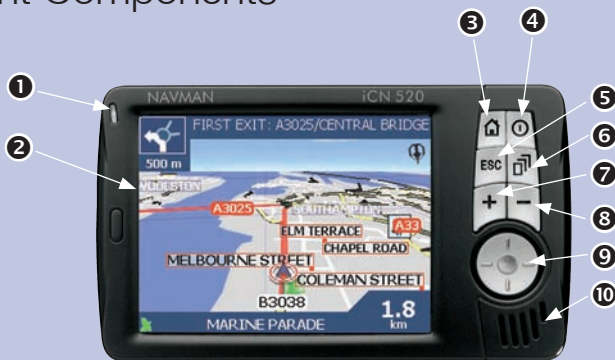
- Do not operate the iCN while driving or place the iCN in a position that obstructs the driver's view.
- Do not mount the iCN in a way that may be distracting or interfere with the safe operation of the vehicle, the deployment of airbags or other safety equipment.
- Do not leave the iCN in view while your vehicle is unattended, especially in strong or direct sunlight.
- Do not use or handle the iCN when it is hot; leave it to cool, out of direct sunlight.

**Failure to adhere to these instructions may lead to serious personal injury, including death, or property damage. Navman disclaims all liability for use of the iCN that contributes to injuries, death, property damage or violates law.**

## 2. iCN Features

We recommend that you familiarize yourself with the iCN's basic operations, such as using the stylus, **4-way toggle** and **Volume** control.

### Front Components



Component	Description
1	Charge Indicator Amber indicates that battery is charging; Green indicates that battery is fully charged.
2	Touch Screen Displays maps and menu options. Tap with the stylus to select menu options or enter information.
3	Menu Displays the <i>Main Menu</i> screen. Press and hold to reset the iCN.
4	Power Turns the iCN on or off. When off, the iCN enters a suspended state.
5	ESC Cancels an action, returns to the previous screen and deletes the last text character on the <i>Keyboard</i> screen; hold down for longer to delete a whole line at once.
6	Page Cycles through the <i>2D Map</i> , <i>3D Map</i> , <i>Next Turn</i> and <i>Next 4 Turns</i> screens; displays additional preferences or search-result screens, when available.
7	+ Displays a smaller area in greater detail on the <i>Map</i> and <i>3D Map</i> screens, or press and hold to increase the screen brightness.
8	- Displays a larger area in less detail on the <i>Map</i> and <i>3D Map</i> screens, or press and hold to decrease the screen brightness.



	Component	Description
9	4-Way Toggle	Selects Main Menu options, keyboard characters and Preferences, moves around the 2D Map screen to select a destination, and scrolls through lists, such as lists of search results; press centre to confirm the selected menu option, text or preference; press up or down to adjust the viewing angle on the 3D Map screen.
10	Speaker	Outputs voice commands and warnings. Use the <b>Volume</b> control to adjust.

## Back Components



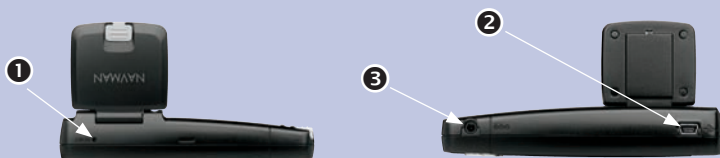
	Component	Description
1	Battery Switch	Must be set to <b>ON</b> for normal use. Switching to <b>OFF</b> will turn the battery off, saving battery power.
2	GPS Receiver	Receives signals from GPS satellites when lifted out to the horizontal position.
3	External Antenna Socket	Connection socket for GPS mMCX External Antenna (not included). Protected by rubber cover.

## Side Components



	Component	Description
1	SD/MMC Slot	Slot for memory card. Memory card must be inserted with label facing forward.
2	Stylus	Used to tap the screen to make selections and enter information; Pull out of the slot to use and insert in the slot to store.
3	Volume Control	Rotate up or down to hear a sound test; rotate and hold to adjust volume.
4	Headphone Socket	Connection socket for headphones or earphones (not included).

## End Components



	Component	Description
1	Reset	Resets the iCN; press using the stylus.
2	USB Socket	Connection socket for USB cable to your computer.
3	Power Socket	Connection socket for vehicle power-adaptor or AC power-pack cable.

## Stylus



The stylus is your input device. Pull the stylus out of the slot and extend it for ease of use. Store it in the slot when not in use.

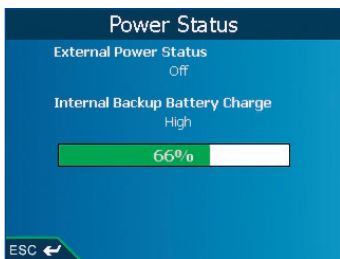
- Tap the screen with the stylus to select.
- Tap and drag the screen with the stylus to navigate the *Map* and *3D Map* screens.

## Internal Battery

The iCN has an internal battery that when fully charged should power the iCN for 4 hours.

You can monitor battery power at the *Power Status* screen:

*Main Menu* → *Preferences* → *More Preferences* → *Hardware* → *Power Status*



## Charging the Battery

When the battery is charging, the **Charge Indicator** is **amber**; when the battery is fully charged, the **Charge Indicator** is **green**.

- To charge the iCN in a vehicle, plug the vehicle power-adaptor into the **Power Socket** on the bottom of the iCN and the other end into the vehicle power-socket.
- To charge the iCN using an electrical wall outlet, plug the AC power-pack into the **Power Socket** on the bottom of the iCN and the other end into the wall outlet.

## 3. Positioning the iCN in a Vehicle

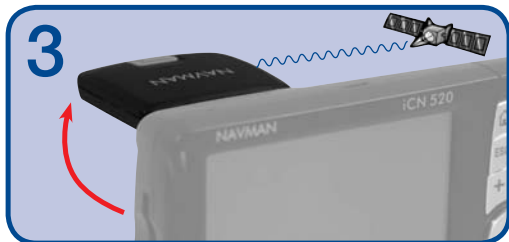
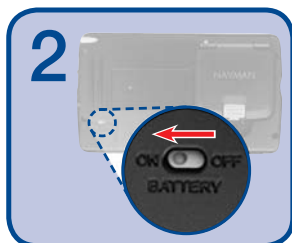
Before you begin, check if your vehicle is fitted with a heat-reflective or heated windscreen. If so, you will need to purchase an external antenna for your iCN to receive GPS signals. See page 93.

Follow the safety notice on page 7 to ensure that the iCN does not obstruct the driver's view, or interfere with the operation of vehicle airbags and safety devices.

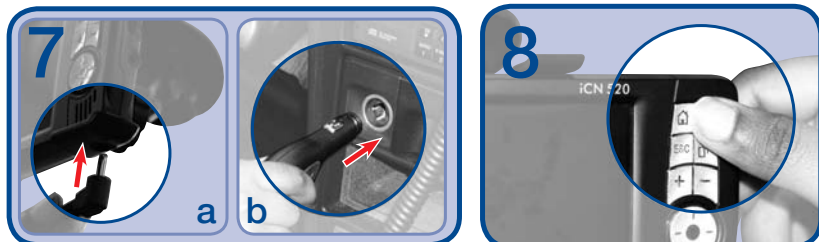
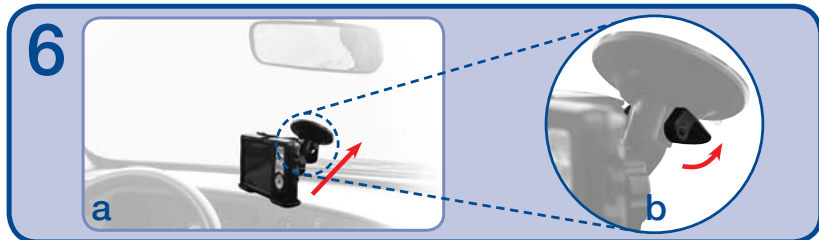
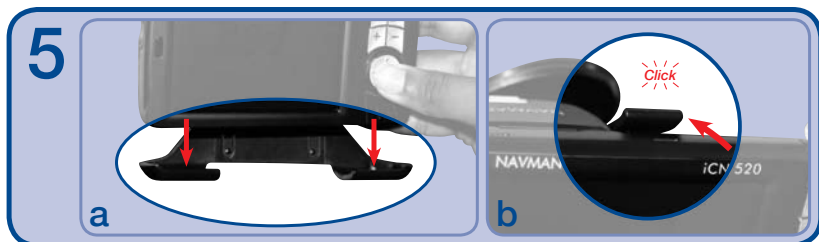
### Assembling the iCN Suction-Mount

Choose a position on the windshield that is clearly visible to the driver without obstructing the view of the road.

- Assemble the suction-mount:
  - Slip the locking-nut over the ballfoot.
  - Snap the socket-clip onto the ballfoot.
  - Screw the locking-nut onto the thread of the socket-clip until firm.
- Check the **Battery Switch** on the back of the iCN. If it is switched to **OFF**, then remove the stylus and use it to switch the **Battery Switch** to **ON**.
- Open the GPS antenna outwards, so that it has a clear view of the sky.
- Gently insert the memory card in the **Memory Card** slot with the label facing the front of the iCN. See page 18 for how to insert the memory card.



5. Insert the iCN into the suction-mount:
  - a. Position the two locating-tabs on the underside of the iCN into the corresponding slots on the socket-clip.
  - b. Snap the upper side of the iCN into the socket-clip.
6. Use the alcohol swab to clean and dry the suction-cup and the mounting-area on the windshield, then attach the suction-mount to the windshield:
  - a. Hold the suction-cup firmly against the windshield and
  - b. Press the lever towards the suction-cup.
7. Connect the iCN to the vehicle power supply:
  - a. Plug the small end of the In-Vehicle Power-Adaptor into the **Power Socket** on the left side of the iCN.
  - b. Plug the other end of the In-Vehicle Power-Adaptor into the 12 V vehicle power-socket.
8. Press **1**.  
The iCN will turn on.



## 4. Starting Your iCN

The *Main Menu* screen provides access to all of the iCN's functions, including navigating to a destination.

### Step One: Turn iCN On

1. Check the **Battery Switch** on the back of the iCN. If it is switched to **OFF**, then remove the stylus and use it to switch the **Battery Switch** to **ON**.



2. Gently pull the bottom of the GPS receiver away from the iCN.  
The receiver will lift out to a horizontal position to allow it to obtain a GPS fix.



3. Press **1**.  
The iCN will turn on.

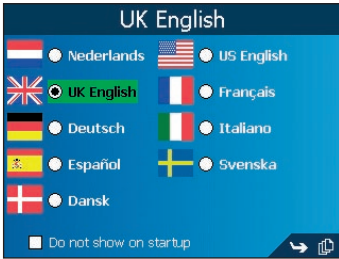
## Step Two: Language Screen

**iCN 510:** If you purchased your iCN 510 in Australia, Canada, United Kingdom or United States, then English is chosen by default and the *Warning* screen will display instead of the *Language* screen. Go to *Step Three: Warning Screen*.

To change the language from English to another, see *Installing a Language on Your iCN 510* on page 84.

**iCN 520:** If you purchased your iCN 520 in Australia, Canada, New Zealand, or United States, then English is chosen by default and the *Warning* screen will display instead of the *Language* screen. Go to *Step Three: Warning Screen*.

### European Users:




1. Tap your language choice.

*Note: Ensure that the memory card supplied with your iCN is inserted in the SD/MMC slot (see page 14). If you are using a different memory card or files on your original memory card have been deleted, you may need to install a language on your iCN internal memory. See Changing Language on pages 18-19.*

- To prevent the *Language* screen from displaying on each startup, select the **Do not show on startup** check box.


**iCN 520:** Selecting the **Do not show on startup** check box will install the selected language to your iCN internal memory. See page 19 for more information.

2. Tap  to go to the next screen.  
The *Warning* screen will display.

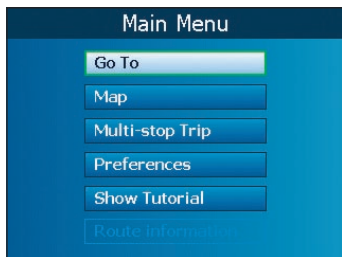
## Step Three: Warning Screen


1. Read the warning message.
2. Tap **Accept** to confirm that you understand.  
The first *Tutorial* screen will display.

## Step Four: Tutorial Screens

1. Read the *Tutorial* screen.
  - To prevent the *Tutorial* from displaying on startup, select the **Do not show Tutorial on startup** check box.
2. Tap  to move through each *Tutorial* screen.  
The *Main Menu* screen will display.


## Main Menu Screen



- Use the stylus to select a *Main Menu* option.
- Return to the *Main Menu* screen at any time by pressing .
- The **Route Information** option is only available when a route has been calculated. See page 53-54 for more information.

## To Turn iCN Off

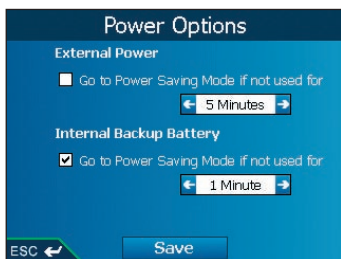
When your iCN is off, it enters a suspended state and the system stops operating. When you turn your iCN on, it returns to the screen you were last viewing.

1. Remove the iCN from the suction-mount bracket if necessary, then gently push the GPS receiver back towards the iCN. The receiver will click into place.
2. Press . The iCN will enter a suspended state and the screen will turn off.

## Power-Saving Suspended State

To save battery power, your iCN will automatically enter a suspended state after a set period of time. You can change the default suspended-state settings at the *Power Options* screen.

*Main Menu* → *Preferences* → *More Preferences* → *Hardware* → *Power Options*




*Note: If you are not going to be using the iCN for a period of time, switch the **Battery Switch** to **OFF** to save battery power.*



## Reset iCN

Normally you do not need to reset your iCN; however, should your iCN not turn on or not respond, you can reset it to solve the problem.

To reset your iCN, either:

- a. Press and hold .  
The message *Reset Device?* will display. Tap **Yes**.
- b. Use the stylus to press the **Reset** button on the top of the iCN.

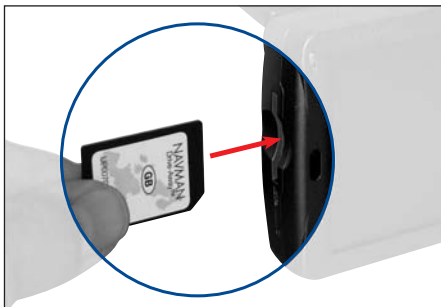
## 5. Memory Card

Your iCN came with a memory card containing a preactivated map of the region in which it was purchased. To navigate to your destination you will first need to insert the memory card in your iCN.

**Important:** If any of the files on the memory card are deleted, or if you are using a different memory card from the one that came with your iCN, you may need to install a language to the iCN internal memory and install maps to your memory card. *To install a language, see Changing Language below; for installing maps using SmartST Desktop on your computer, see Installing SmartST Desktop on Your Computer on page 78 and Installing Maps Using SmartST Desktop on page 81.*

### Inserting Memory Card

Gently insert the card in the **SD/MMC** slot with the label facing the front of the iCN.



### Removing Memory Card

Gently push down on the top edge of the card to release it, and pull it out of the slot.

## 6. Changing Language

### iCN 510

The memory card that came with your iCN 510 contains a selection of languages. As long as this memory card is inserted in your iCN, you will be able to navigate using any of these languages by selecting one at the *Language* screen at startup, or at the *Preferences - Language* screen (see page 66).

The iCN 510 can store one language in internal memory, which is UK English by default. If you are using a different memory card to the one supplied with your iCN, you will only be able to navigate using this one language. To change the language stored in internal memory, complete *Installing a Language on Your iCN 510* on page 84.

## iCN 520

The memory card that came with your iCN 520 contains a selection of languages. As long as this memory card is inserted in your iCN (and you have not selected the **Do not show on startup** check box on the *Language* screen), you will be able to navigate using any of these languages by selecting one at the *Language* screen at startup.


The iCN 520 can store two languages in internal memory: UK English and one which you have installed using the below procedure. This means that if you are using a different memory card to the one supplied with your iCN, you can navigate using either UK English or your chosen language by selecting one at the *Preferences - Language* screen (see page 66).

### Installing a Language to your iCN 520

To install a language on your iCN, the *Language* screen must be enabled to display at startup. If you have disabled the *Language* screen from displaying at startup, or you purchased your iCN 520 in Australia, Canada, New Zealand or United States, you must ensure the **Language Selection Screen** check box is selected on the *Preferences - Startup* screen. See page 77.

1. Turn on your iCN as per Step One of *Starting Your iCN* on page 14.
  - If your iCN is already on, reset it as per the instructions on page 17.
2. When the *Language* screen is displayed, tap your language choice.




3. Select the **Do not show on startup** check box.
4. Tap .
 

The selected language is installed to your iCN. The *Warning* screen will display.
5. Continue to Step Three of *Starting Your iCN* on page 15.

## 7. GPS Status

Signals are transmitted by Global Positioning System (GPS) satellites orbiting the Earth.

You can view your GPS status at any time from the *2D Map*, *3D Map*, *Next Turn* and *Next 4 Turns* screens.

The **GPS Strength Indicator**  will display green when there is a valid fix (2D or 3D), and between one and three bars will display to indicate the strength of the signal; the **GPS Strength Indicator** will display red when no fix is available.



Tap the **GPS Strength Indicator** to open the *Satellite Signal Strengths* screen.

For more detailed information on your current GPS fix, see *GPS Status* on page 73.

## 8. Setting Your Destination

For your safety, enter destination information before you start a journey.

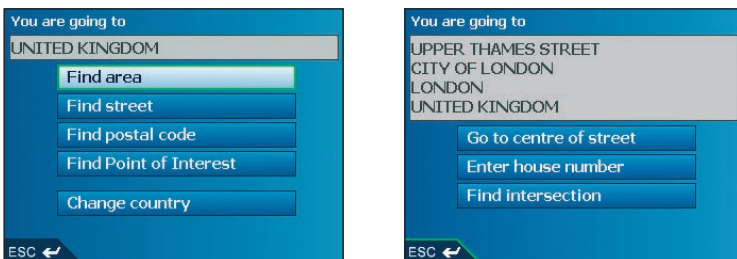
**Do not operate the iCN while driving.**

Select a destination using the *Destination*, *Keyboard* and *Preview* screens, which used together form a destination wizard.

This section describes how to use each of these screens and provides two case studies to help guide you through setting your destination.


### Destination Screen

The *Destination* screen is used to select your destination by area, street, postal code/ZIP code, Point of Interest (POI), intersection, city, town, country or state.



As you specify each part of the address, it will display in the **You are going to** field at the top of the screen. The available options will change to reflect the parts of the address still to be completed.

### Keyboard Screen

The *Keyboard* screen will display when you are required to enter text, such as when searching for a street name. As you select each character, the first two results will display. Tap  to see more search results. Search results will be listed in matching order, with the closest matches appearing at the top of the list.

The *Keyboard* screen can display in three modes: alphabet, alternate and number/symbol.



Figure 1. Alphabet Keyboard

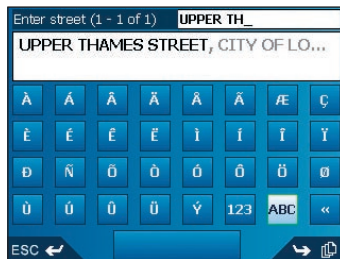


Figure 2. Alternate Keyboard

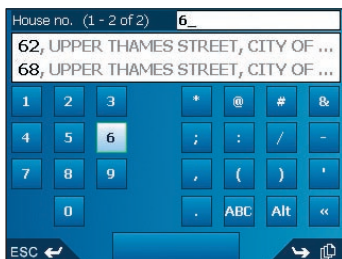



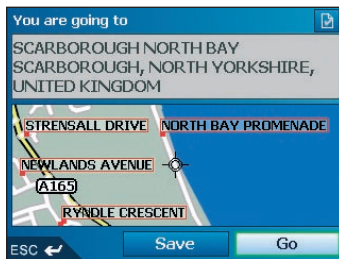
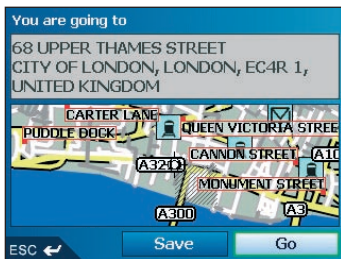
Figure 3. Number/Symbol Keyboard


As you select each character, the first two results will display. Tap  to see more search results.

- To select a character or a search result, tap the character or search result.
- To delete a character, press **ESC** or tap <<; hold **ESC** to delete the line.
- To display the number/symbol *Keyboard* screen (Figure 3), tap **123**.
- To display the alternate *Keyboard* screen (Figure 2), press **+**, or tap **Alt**.
- To display the alphabet *Keyboard* screen (Figure 1), press **-**, or tap **ABC**.

## Preview Screen

The *Preview* screen is used to display a preview of your destination before navigating to it, saving it as a Favourite or displaying it on the *2D Map* screen.



- To display a smaller area in greater detail, press **+**.
- To display a larger area in less detail, press **-**.
- To display your destination on the *2D Map* screen, tap the preview map. The *2D Map* screen will display.
- To save your destination as a Favourite, tap **Save**. The *New Favourite* screen will display. See *Favourites and My Home* on page 59.
- To calculate the route and open the *3D Map* screen, tap **Go**. The *3D Map* screen will display.
- To view Point of Interest (POI) details when your destination is a POI, tap . The *POI Detail* screen will display.

## Address Search Rules

The following rules apply when searching for a destination in Europe:

### Street Names with Dates

If a street name contains a date or a number, search by the first number:

Example 1: If searching for "**Faubourg du 13 Juillet 1920**", search by "**13**".

Example 2: If searching for "**Avenue du 14 Avril 1914**", search by "**14**".

Example 3: If searching for "**Rue de la 1<sup>ere</sup> Armée**", search by "**1**".

### Streets Named After People (excluding Italy)

If a street name is a person's name (including at least a first and last name), search by the first name:

Example 1: If searching for "**Rue Albert Mathieu**", search by "**Albert**".

Example 2: If searching for "**Fred Archer Way**", search by "**Fred**".

Example 3: If searching for "**Franz Grillparzer-Strasse**", search by "**Franz**".

### Street Named After People - Italy

In Italy, if a street name is a person's name (including at least a first and last name), search by the last name:

Example 1: If searching for "**Via de Angelo de Thomasis**", search by "**Thomasis**".

Example 2: If searching for "**Via Placido Giovannella**", search by "**Giovannella**".

Example 3: If searching for "**Via della Giacomo Marca**", search by "**Marca**".

### Postcodes in United Kingdom and Netherlands

When searching by postcode in United Kingdom or Netherlands, type the postcode with spaces and without the last two letters.

Example 1: If searching for "**RH6 9ST**", search by "**RH6 9**".

Example 2: If searching for "**3514 BN**", search by "**3514**".

*For exact European street type abbreviations, see Appendix: Street Types on page 94.*

# Setting Your Destination by Address -

## Case Study One: Europe and New Zealand

This case study will show you how to set your destination by selecting your country, then area, then street, then house number.

*Note: This case study applies to Europe and New Zealand only. For navigating in Australia, Canada and USA, see page 28.*

### Step One: Open the *Destination* screen

- From the *Main Menu*, tap **Go To**.
- From the *Go To* screen, tap **Address or POI**.

The *Destination* screen will display.

**Important Note:** *If this is the first time you are setting your destination and you have maps from more than one country installed and selected, then the Select country screen will display instead of the Destination screen. Go directly to Step Two: Select the Country of Destination, step b.*

*The next time you perform this procedure, the Destination screen will open as expected.*

### Step Two: Select the Country of Destination

If you only have the map of one country installed and selected, that country is selected for your destination by default and cannot be changed. Go to *Step Three: Find the Area of Destination*.

- From the *Destination* screen, tap **Change country**.

The *Select country* screen will display.



- Select a country from the list.
- The *Destination* screen will display.

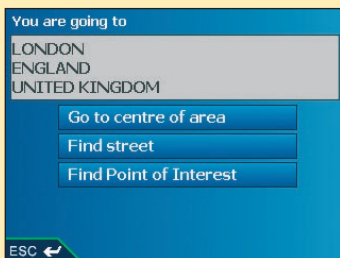


## Step Three: Find the Area of Destination

- a. From the *Destination* screen, tap **Find area**.  
The *Keyboard* screen will display.



- b. Use the *Keyboard* screen to find the area of your destination.  
For information on using the *Keyboard* screen, see pages 21-22.  
The *Destination* screen will display.



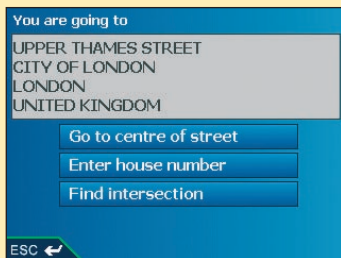
## Step Four: Find the Street of Destination

- a. From the *Destination* screen, tap **Find street**.  
The *Keyboard* screen will display.



- b. Use the *Keyboard* screen to find the street of your destination. For information on using the *Keyboard* screen, see pages 21-22.

The *Destination* screen will display.

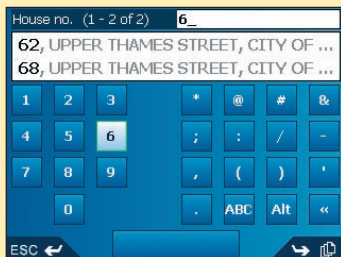


## Step Five: Find the House Number of Destination

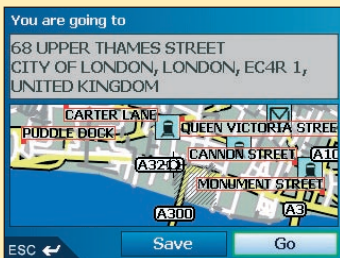
- a. From the *Destination* screen, tap **Enter house number**.

The *Keyboard* screen will display.

*Note: If the **Enter house number** option is not displayed, house numbers are not available for your selected street. Tap **Go to centre of street** to display the *Preview* screen. Go to step c.*



- b. Use the *Keyboard* screen to find the house number of your destination. For information on using the *Keyboard* screen, see pages 21-22. The *Preview* screen will display.



- c. Complete one of the following:
- To calculate the route and open the *3D Map* screen, tap **Go**.  
The *3D Map* screen will display.
  - To display the destination on the *2D Map* screen, tap the preview map.  
The *2D Map* screen will display.
  - To save the destination as a Favourite, tap **Save**.  
The *New Favourite* screen will display. See *Favourites and My Home* on page 59.
  - To change your destination, tap **ESC**.  
The *Destination* screen will display.

To return to the *Main Menu*, press .

# Setting Your Destination by Address - Case Study Two: Australia, Canada and USA

This case study will show you how to set your destination by selecting your country, then state, then town or city, then street, then house number.

*Note: This case study applies to Australia, Canada and USA only. For navigating in Europe and New Zealand, see page 24.*

## Step One: Open the *Destination* screen

- From the *Main Menu*, tap **Go To**.
- From the *Go To* screen, tap **Address or POI**.  
The *Destination* screen will display.

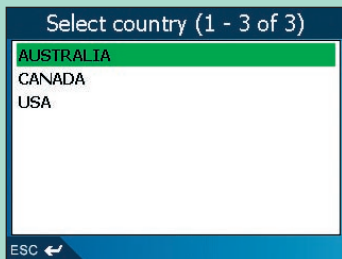
### Important Note:

- If this is the first time you are setting your destination and you have maps from more than one country installed and selected, then the *Select country* screen will display instead of the *Destination* screen. **Go directly to Step Two: Select the Country of Destination, step b.**  
The next time you perform this procedure, the *Destination* screen will open as expected.
- If this is the first time you are setting your destination and you have maps from only one country, but more than one state installed and selected, then the *Select State* screen will display instead of the *Destination* screen. **Go directly to Step Three: Select the State of Destination.**  
The next time you perform this procedure, the *Destination* screen will open as expected.

## Step Two: Select the Country of Destination

If you only have the map of one country installed and selected, that country is selected for your destination by default and cannot be changed. Go to *Step Three: Select the State of Destination*.

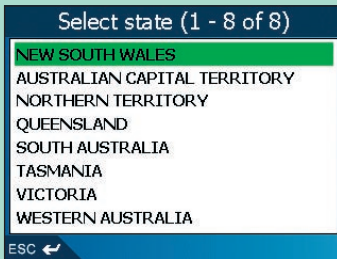
- From the *Destination* screen, tap **Change country** or **Change country or state**.  
The *Select country* screen will display.



- Select a country from the list.  
The *Select state* screen will display.
  - If you only have the map of one state installed and selected, that state is selected for your destination by default. Go to *Step Four: Find the Town or City of Destination*.

## Step Three: Select the State of Destination

If you only have the map of one state installed and selected, that state is selected for your destination by default and cannot be changed. Go to *Step Four: Find the Town or City of Destination*.



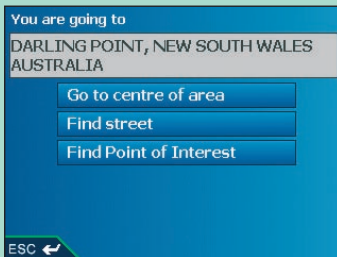
- Select a state from the list.  
The *Destination* screen will display.

## Step Four: Find the Town or City of Destination

- From the *Destination* screen, tap **Find town/city**.  
The *Keyboard* screen will display.

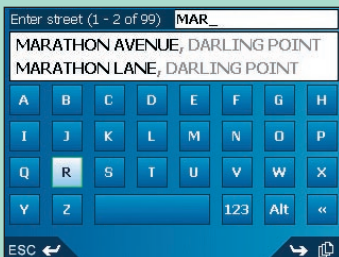


- Use the *Keyboard* screen to find the town or city of your destination. *For information on using the Keyboard screen, see pages 21-22.*  
The *Destination* screen will display.

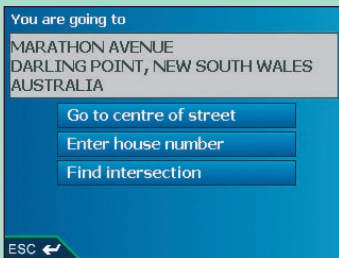


## Step Five: Find the Street of Destination

- a. From the *Destination* screen, tap **Find street**.  
The *Keyboard* screen will display.



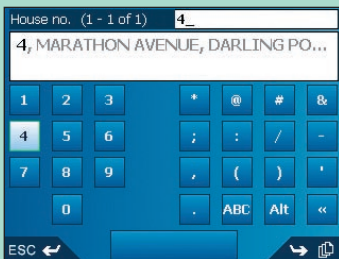
- b. Use the *Keyboard* screen to find the street of your destination. For information on using the *Keyboard* screen, see pages 21-22.  
The *Destination* screen will display.



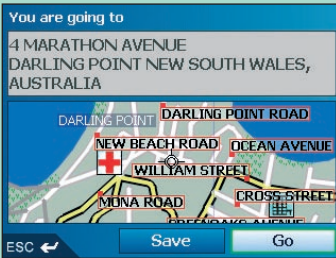
## Step Six: Find the House Number of Destination

- a. From the *Destination* screen, tap **Enter house number**.  
The *Keyboard* screen will display.

*Note: If the **Enter house number** option is not displayed, house numbers are not available for your selected street. Tap **Go to centre of street** to display the *Preview* screen. Go to step c.*



- b. Use the *Keyboard* screen to find the house number of your destination. For information on using the *Keyboard* screen, see pages 21-22. The *Preview* screen will display.



- c. Complete one of the following:

- To calculate the route and open the *3D Map* screen, tap **Go**. The *3D Map* screen will display.
- To display the destination on the *2D Map* screen, tap the preview map. The *2D Map* screen will display.
- To save the destination as a Favourite, tap **Save**. The *New Favourite* screen will display. See Favourites and My Home on page 59.
- To change your destination, tap **ESC**. The *Destination* screen will display.

To return to the *Main Menu*, press .

# Setting Your Destination by POI -

## Case Study One: Europe and New Zealand

This case study will show you how to set your destination by selecting a Point of Interest (POI).

A POI is a named site, feature, landmark or public venue which can be displayed as an icon on the map. POIs are grouped by type, such as parks and museums.

*Note: This case study applies to Europe and New Zealand only. For navigating in Australia, Canada and USA, see page 35.*

### Step One: Open the *Destination* screen

- From the *Main Menu*, tap **Go To**.
- From the *Go To* screen, tap **Address or POI**.  
The *Destination* screen will display.

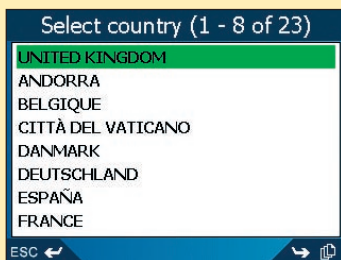
**Important Note:** *If this is the first time you are setting your destination and you have maps from more than one country installed and selected, then the Select country screen will display instead of the Destination screen. Go directly to Step Two: Select the Country of Destination, step b.*

*The next time you perform this procedure, the Destination screen will open as expected.*

### Step Two: Select the Country of Destination

If you only have the map of one country installed and selected, that country is selected for your destination by default and cannot be changed. Go to *Step Three: Select the Type of POI*.

- From the *Destination* screen, tap **Change country**.  
The *Select country* screen will display.



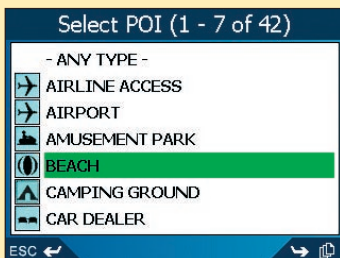
- Select a country from the list.  
The *Destination* screen will display.



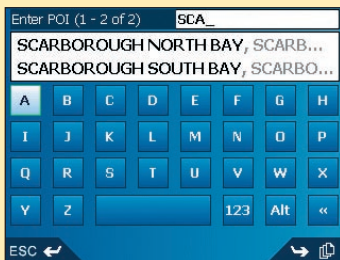
## Step Three: Select the Type of POI

Note: To narrow the search for a type of POI, you can first search by Area.

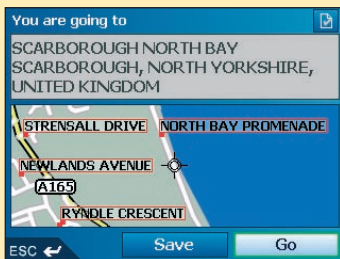
- From the *Destination* screen, tap **Find Point of Interest**.  
The *Select POI* screen will display.




- Select a POI type from the list.  
The *Keyboard* screen will display.



- Use the *Keyboard* screen to find the POI. For information on using the *Keyboard* screen, see pages 21-22.  
The *Preview* screen will display.



d. Complete one of the following:

- To calculate the route and open the *3D Map* screen, tap **Go**.  
The *3D Map* screen will display.
- To display the destination on the *2D Map* screen, tap the preview map.  
The *2D Map* screen will display.
- To save the destination as a Favourite, tap **Save**.  
The *New Favourite* screen will display. See *Favourites and My Home on page 59*.
- To change your destination, tap **ESC**.  
The *Destination* screen will display.
- To view Point of Interest (POI) details when your destination is a POI, tap   
The *POI Detail* screen will display.

To return to the *Main Menu*, press .

# Setting Your Destination by POI -

## Case Study Two: Australia, Canada and USA

This case study will show you how to set your destination by selecting a Point of Interest (POI).

A POI is a named site, feature, landmark or public venue which can be displayed as an icon on the map. POIs are grouped by type, such as parks and museums.

*Note: This case study applies to Australia, Canada and USA only. For navigating in Europe and New Zealand, see page 32.*

### Step One: Open the *Destination* screen

- From the *Main Menu*, tap **Go To**.
- From the *Go To* screen, tap **Address or POI**.  
The *Destination* screen will display.

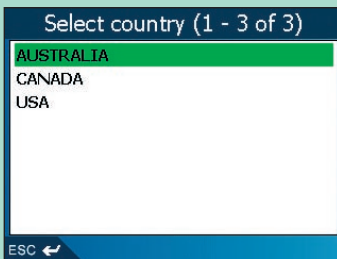
#### Important Note:

- If this is the first time you are setting your destination and you have maps from more than one country installed and selected, then the *Select country* screen will display instead of the *Destination* screen. **Go directly to Step Two: Select the Country of Destination, step b.**  
The next time you perform this procedure, the *Destination* screen will open as expected.
- If this is the first time you are setting your destination and you have maps from only one country, but more than one state installed and selected, then the *Select State* screen will display instead of the *Destination* screen. **Go directly to Step Three: Select the State of Destination.**  
The next time you perform this procedure, the *Destination* screen will open as expected.

### Step Two: Select the Country of Destination

If you only have the map of one country installed and selected, that country is selected for your destination by default and cannot be changed. Go to *Step Three: Select the State of Destination*.

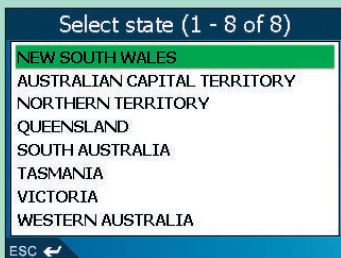
- From the *Destination* screen, tap **Change country** or **Change country or state**.  
The *Select country* screen will display.



- Select a country from the list.  
The *Select state* screen will display.
  - If you only have the map of one state installed and selected, that state is selected for your destination by default. Go to *Step Four: Select the Type of POI*.

## Step Three: Select the State of Destination

If you only have the map of one state installed and selected, that state is selected for your destination by default and cannot be changed. Go to *Step Four: Select the Type of POI*.

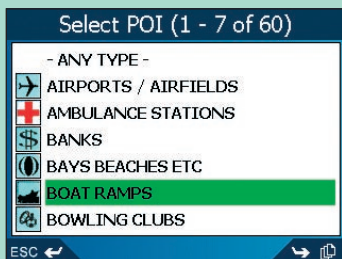


- a. Select a state from the list.  
The *Destination* screen will display.

## Step Four: Select the Type of POI

*Note: To narrow the search for a type of POI, you can first search by Town or City.*

- a. From the *Destination* screen, tap **Find Point of Interest**.  
The *Select POI* screen will display.

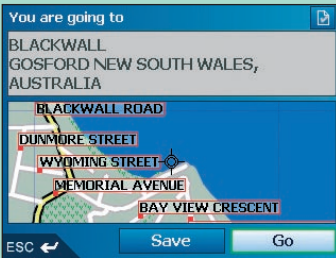


- b. Select a POI type from the list.  
The *Keyboard* screen will display.




- c. Use the *Keyboard* screen to find the POI. For information on using the *Keyboard* screen, see pages 21-22.

The *Preview* screen will display.



- d. Complete one of the following:

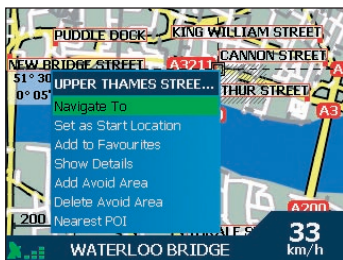
- To calculate the route and open the *3D Map* screen, tap **Go**.  
The *3D Map* screen will display.
- To display the destination on the *2D Map* screen, tap the preview map.  
The *2D Map* screen will display.
- To save the destination as a Favourite, tap **Save**.  
The *New Favourite* screen will display. See *Favourites* and *My Home* on page 59.
- To change your destination, tap **ESC**.  
The *Destination* screen will display.
- To view Point of Interest (POI) details when your destination is a POI, tap   
The *POI Detail* screen will display.

To return to the *Main Menu*, press .

## 9. Using the *2D Map* screen to Plan a Route

You can plan a route directly from the *2D Map* screen using the *Pop-up* menu.

- From the *Main Menu*, tap **Map**.  
The *2D Map* screen will display.
  - Move around the *2D Map* screen using the **4-way toggle** or stylus.
  - To display a smaller area in greater detail, press **+**.
  - To display a larger area in less detail, press **-**.
- Tap the *Map* screen or press the **4-way toggle** button to display the cross-hairs.
  - To remove the cross-hairs press **ESC**.
- Drag the intersection of the cross-hairs to a destination. Where the cross-hairs intersect on a street, the street will highlight and the street name will display.
- Tap the intersection of the cross-hairs, or press the **4-way toggle** button to select the street as your destination.  
The *Pop-up* menu will display.



- Select **Navigate To**.  
The route is calculated and displayed on the *3D Map* screen.

# 10. Multi-stop Trips

You can use the *Multi-stop Trip* screen to set multiple destination points for your trip. Your route will be calculated to go via each of these points in the specified order.

Destination points can be added via the *Multi-stop Trip* screen or by selecting **Show Details** from the pop-up menu on the *2D Map* screen, then **Add to Trip**.

You can save up to 200 multi-stop trips, each with up to 14 destination points.

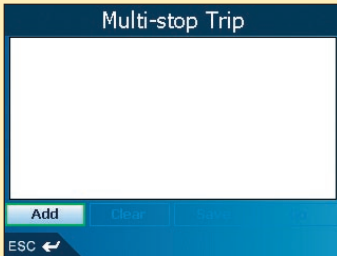
## Case Study One: Europe and New Zealand

This case study will show you how to set a multi-stop trip by selecting your country, then area, then street, then house number for each destination point.

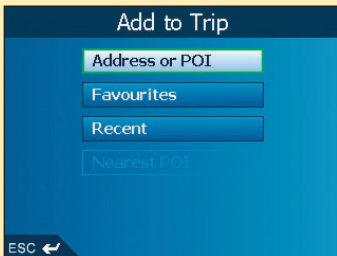
*Note: This case study applies to Europe and New Zealand only. For navigating in Australia, Canada and USA, see page 44.*

### Step One: Start Your Multi-stop Trip

- a. From the *Main Menu*, tap **Multi-stop Trip**.  
The *Multi-stop Trip* screen will display.

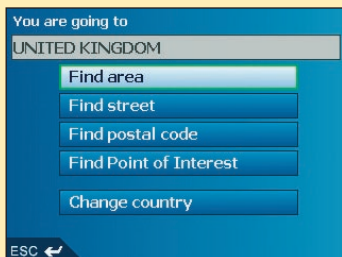


- b. Tap **Add**.  
The *Add to Trip* screen will display.



- c. Tap **Address or POI**.  
The *Destination* screen will open.

Note: You can also add destination points using Favourites, recent destinations and nearest Point of Interest.



## Step Two: Select the Country of Your Destination Point

If you only have the map of one country installed and selected, that country is selected for your destination point by default and cannot be changed. Go to *Step Three: Find the Area of Your Destination Point*.

- a. From the *Destination* screen, tap **Change country**.  
The *Select country* screen will display.



- b. Select a country from the list.  
The *Destination* screen will display.

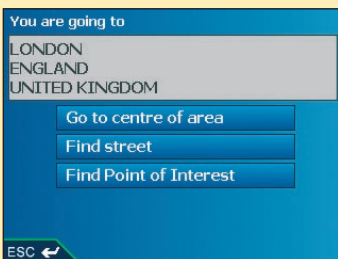


## Step Three: Find the Area of Your Destination Point

- a. From the *Destination* screen, tap **Find area**.  
The *Keyboard* screen will display.



- b. Use the *Keyboard* screen to find the area of your destination point. *For information on using the Keyboard screen, see pages 21-22.*  
The *Destination* screen will display.

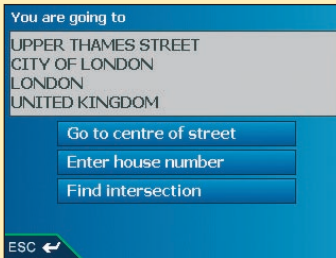


## Step Four: Find the Street of Your Destination Point

- a. From the *Destination* screen, tap **Find street**.  
The *Keyboard* screen will display.



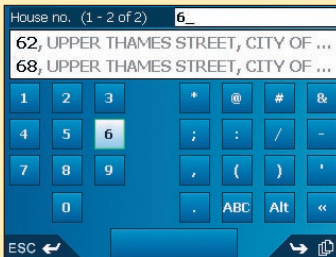
- b. Use the *Keyboard* screen to find the street of your destination point. *For information on using the Keyboard screen, see pages 21-22.*  
The *Destination* screen will display.



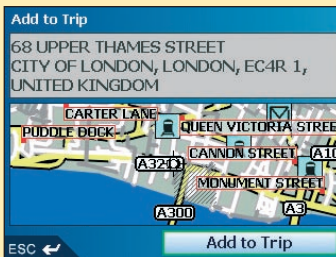
## Step Five: Find the House Number of Your Destination Point

- a. From the *Destination* screen, tap **Enter house number**.  
The *Keyboard* screen will display.

*Note: If the **Enter house number** option is not displayed, house numbers are not available for your selected street. Select **Go to centre of street** to display the Preview screen. Go to step c.*



- b. Use the *Keyboard* screen to find the house number of your destination point. *For information on using the Keyboard screen, see pages 21-22.*  
The *Preview* screen will display.



c. Tap **Add to Trip**.


The *Multi-stop Trip* screen will display, listing your destination point.



## d. Complete one of the following:

*Note: Destination points added, updated or deleted after a multi-stop trip has commenced will not affect the current route.*

If you want to ...	Then ...
add another destination point <i>Note: Destination points added after a multi-stop trip has commenced will not be included in the current route.</i>	<ul style="list-style-type: none"> <li>• tap <b>Add</b>. The Add to Trip screen will display.</li> <li>• tap <b>Address</b>. The Destination screen will display.</li> <li>• go to <i>Step Three: Find the Area of Your Destination Point</i>.</li> </ul>
change the order of your destination points	<ul style="list-style-type: none"> <li>• select a destination point to move from the list. The <i>Preview</i> screen will display.</li> <li>• select <b>Move</b>. The <i>Multi-stop Trip</i> screen will display.</li> <li>• use the <b>4-way toggle</b> to move the selected destination point to the correct position.</li> </ul>
calculate the route	select <b>Go</b> . The <i>3D Map</i> screen will display the calculated route.
delete all destination points	select <b>Clear</b> .
delete one destination point	<ul style="list-style-type: none"> <li>• select a destination point to delete from the list. The <i>Preview</i> screen will display.</li> <li>• tap <b>Delete From Trip</b>. The <i>Multi-stop Trip</i> screen will display.</li> </ul>
save the multi-stop trip as a Favourite	<ul style="list-style-type: none"> <li>• tap <b>Save</b>. The <i>New Favourite</i> screen will display.</li> <li>• tap <b>Save</b>. The Favourite will save and the <i>Multi-stop Trip</i> screen will display.</li> </ul>

To return to the *Main Menu* screen, press .

## Case Study Two: Australia, Canada and USA

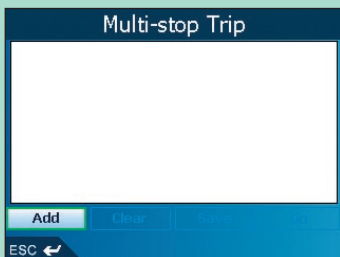
This case study will show you how to set a multi-stop trip by selecting your country, then area, then street, then house number for each destination point.

*Note: This case study applies to Australia, Canada and USA only. For navigating in Europe and New Zealand, see page 39.*

### Step One: Start Your Multi-stop Trip

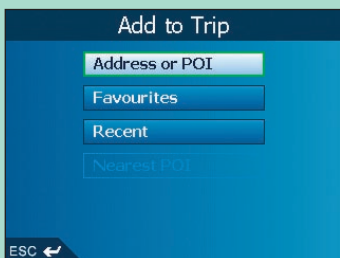
- a. From the *Main Menu*, tap **Multi-stop Trip**.

The *Multi-stop Trip* screen will display.



- b. Tap **Add**.

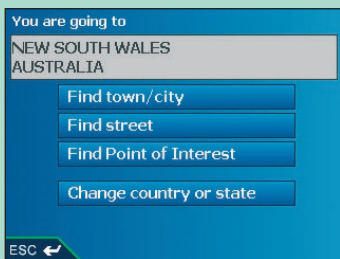
The *Add to Trip* screen will display.



- c. Tap **Address or POI**.

The *Destination* screen will open.

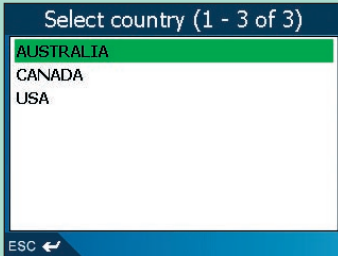
*Note: You can also add destination points using Favourites, recent destinations and nearest Point of Interest.*



## Step Two: Select the Country of Your Destination Point

If you only have the map of one country installed and selected, that country is selected for your destination point by default and cannot be changed. Go to *Step Three: Select the State of Your Destination Point*.

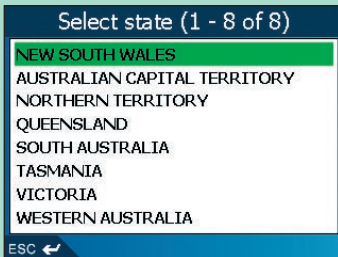
- a. From the *Destination* screen, tap **Change country** or **Change country or state**.  
The *Select country* screen will display.



- b. Select a country from the list.  
The *Destination* screen will display.
  - If you only have the map of one state installed and selected, that state is selected for your destination by default. Go to *Step Four: Find the Town or City of Your Destination Point*.

## Step Three: Select the State of Your Destination Point

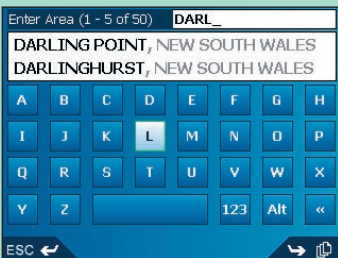
If you only have the map of one state installed and selected, that state is selected for your destination by default and cannot be changed. Go to *Step Four: Find the Town or City of Destination*.



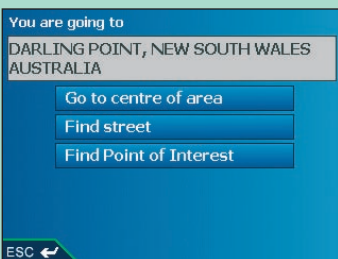
- a. Select a state from the list.  
The *Destination* screen will display.

## Step Four: Find the Town or City of Your Destination Point

- a. From the *Destination* screen, tap **Find town/city**.  
The *Keyboard* screen will display.

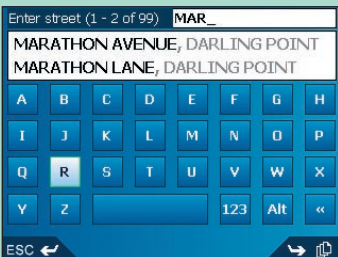


- b. Use the *Keyboard* screen to find the town or city of your destination. *For information on using the Keyboard screen, see pages 21-22.*  
The *Destination* screen will display.

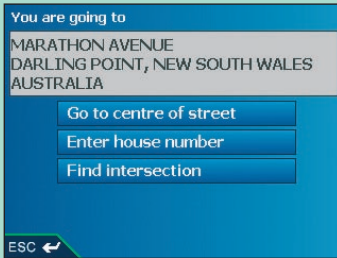


## Step Five: Find the Street of Your Destination Point

- a. From the *Destination* screen, tap **Find street**.  
The *Keyboard* screen will display.



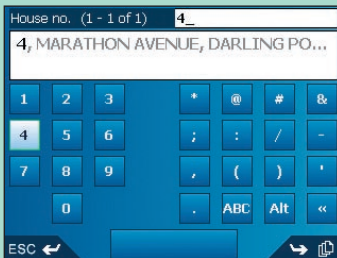
- b. Use the *Keyboard* screen to find the street of your destination point. *For information on using the Keyboard screen, see pages 21-22.*  
The *Destination* screen will display.



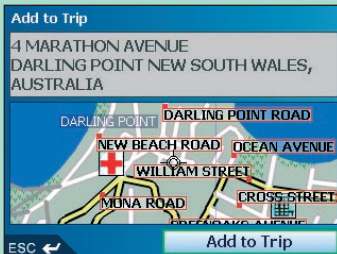
## Step Six: Find the House Number of Your Destination Point

- a. From the *Destination* screen, tap **Enter house number**.  
The *Keyboard* screen will display.

*Note: If **Enter house number** option is not displayed, house numbers are not available for your selected street. Select **Go to centre of street** to display the *Preview* screen. Go to step c.*

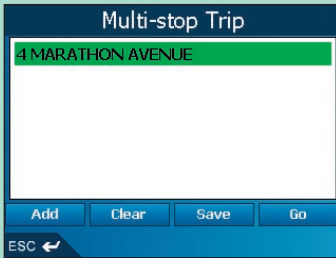


- b. Use the *Keyboard* screen to find the house number of your destination point. *For information on using the Keyboard screen, see pages 21-22.*  
The *Preview* screen will display.



c. Select **Add to Trip**.


The *Multi-stop Trip* screen will display, listing your destination point.



## d. Complete one of the following:

*Note: Destination points added, updated or deleted after a multi-stop trip has commenced will not affect the current route.*

If you want to ...	Then ...
add another destination point <i>Note: Destination points added after a multi-stop trip has commenced will not be included in the current route.</i>	<ul style="list-style-type: none"> <li>• tap <b>Add</b>. The Add to Trip screen will display.</li> <li>• tap <b>Address</b>. The Destination screen will display.</li> <li>• go to <i>Step Three: Find the Area of Your Destination Point</i>.</li> </ul>
change the order of your destination points	<ul style="list-style-type: none"> <li>• select a destination point to move from the list. The <i>Preview</i> screen will display.</li> <li>• tap <b>Move</b>. The <i>Multi-stop Trip</i> screen will display.</li> <li>• use the <b>4-way toggle</b> to move the selected destination point to the correct position.</li> </ul>
calculate the route	tap <b>Go</b> . The <i>3D Map</i> screen will display the calculated route.
delete all destination points	select <b>Clear</b> .
delete one destination point	<ul style="list-style-type: none"> <li>• select a destination point to delete from the list. The <i>Preview</i> screen will display.</li> <li>• tap <b>Delete From Trip</b>. The <i>Multi-stop Trip</i> screen will display.</li> </ul>
save the multi-stop trip as a Favourite	<ul style="list-style-type: none"> <li>• tap <b>Save</b>. The <i>New Favourite</i> screen will display.</li> <li>• tap <b>Save</b>. The Favourite will save and the <i>Multi-stop Trip</i> screen will display.</li> </ul>

To return to the *Main Menu* screen, press .




## Skipping a Destination Point


You can modify a multi-stop trip at any time from the *Multi-stop Trip* screen, however if you have already commenced a trip, changes will not affect the current route:

*Main Menu* → *Multi-stop Trip*

To skip a destination point during a multi-stop trip, complete the following:


1. Press  to return to the *Main Menu* screen.  
The *Main Menu* screen will display.
2. Tap **Route Information**.  
The *Route Information* screen will display.
3. Tap **Skip Next Dest.**  
The next destination point will be skipped and the route recalculated to the following destination point.

# 11. Viewing your Route

Once a route has been calculated, you can view it in several ways. Press  to cycle through the screens.

## 2D Map Screen

The *2D Map* screen is always oriented North and shows your current position (if a GPS fix is active) and surrounding street names. If a route has been calculated, the route and turns are highlighted.


To view the *2D Map* screen, either tap **Map** on the *Main Menu* screen, or when a route has been calculated, press  to cycle through the screens.

- To display a smaller area in greater detail, press +.
- To display a larger area in less detail, press -.
- To display the cross-hairs, tap the map. Tap the intersection of the cross-hairs, or press the **4-way toggle** to display the *Pop-up* menu.



## 3D Map Screen

The *3D Map* screen displays when a route is calculated, oriented to the travelling direction with an adjustable horizon.

To view the *3D Map* screen when a route has been calculated, press  to cycle through the screens.

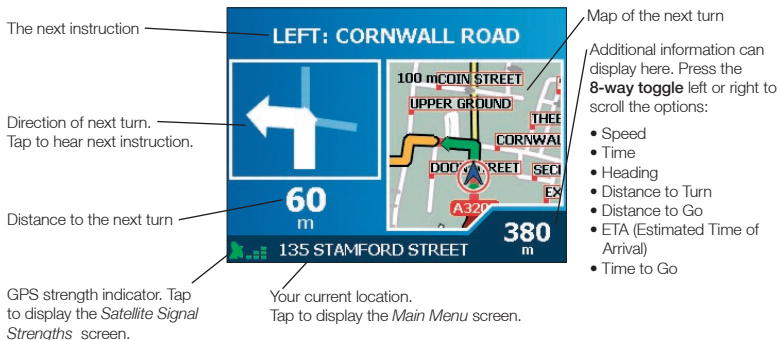
- To adjust the viewing angle, press the **4-way toggle** up or down.
- To display a smaller area in greater detail, press **+**.
- To display a larger area in less detail, press **-**.
- To display the *Go To Pop-up* summary, press the **4-way toggle**.



## Next Turn Screen

The *Next Turn* screen displays information that you need for the next turn, the direction of the turn and the distance to the turn. A route must have been calculated for this screen to be able to display. Access to this screen is controlled by the *Display* preferences screen.

To view the *Next Turn* screen when a route has been calculated, press  to cycle through the screens.



## Next 4 Turns Screen

The *Next 4 Turns* screen displays the next four turns of your route, the turn direction, the street name and the distance to the turn. A route must have been calculated for this screen to be able to display. Access to this screen is controlled by the *Display* preferences screen.

To view the *Next 4 Turns* screen when a route has been calculated, press  to cycle through the screens.



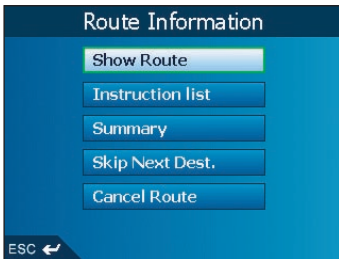
## Back-On-Track™ Automatic Rerouting

Your route is re-directed if you make a wrong turn. The ? symbol will display upper left of the *3D Map* and *Next Turn* screens while the route recalculates.

## Route Information Screen

The *Route Information* screen provides information about your current route and lets you skip a trip destination point or cancel a route.

The screen is only available from the *Main Menu* when you are navigating a route:  
*Main Menu* → *Route Information*

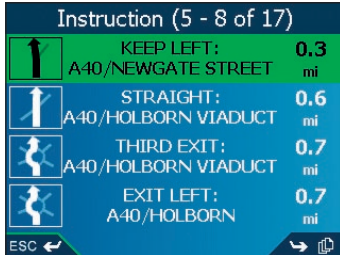


### Show Route

Tap **Show Route** to display your entire route on the *2D Map* screen.

### Instruction List

Tap **Instruction list** to display the *Instruction List* screen.

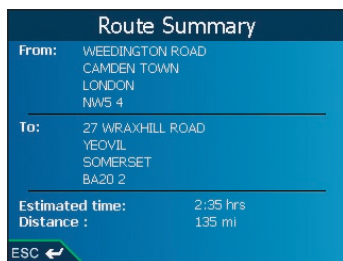


The *Instruction List* screen is similar to the *Next 4 Turns* screen except that it displays your entire route.

- Use to cycle through the instruction list.

## Summary

Tap **Summary** to display the *Route Summary* screen containing your **From** and **To** addresses, **Estimated Time** to arrival and the **Distance** remaining to your destination.



If you are navigating a multi-stop trip, the information displayed will relate to your next destination point.

## Skip Next Destination

Tap **Skip Next Dest.** to skip the next destination point of your trip.

Only available when navigating a multi-stop trip.

## Cancel Route

Tap **Cancel Route** to cancel the route.

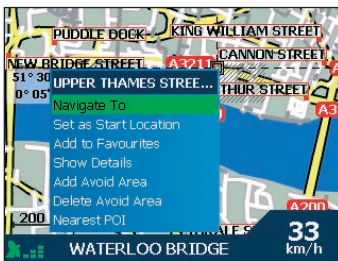
# 12. The 2D Map Screen

## Pop-up Menu

The *Pop-up* menu allows you to access navigational functions from the *2D Map* screen.

To display the *Pop-up* menu complete the following:

- From the *Main Menu*, tap **Map**.  
The *2D Map* screen will display.
  - Move around the *2D Map* screen using the **4-way toggle** or stylus.
  - To display a smaller area in greater detail, press **+**.
  - To display a larger area in less detail, press **-**.
- Tap the *Map* screen or press the **4-way toggle** button to display the cross-hairs.
  - To remove the cross-hairs press **ESC**.
- Position the intersection of the cross-hairs on a destination point. Where the cross-hairs intersect on a street, the street will highlight and the street name will display.
- Tap the intersection of the cross-hairs, or press the **4-way toggle** button to select the street as your destination.  
The *Pop-up* menu will display.



- You can choose one of the following options:

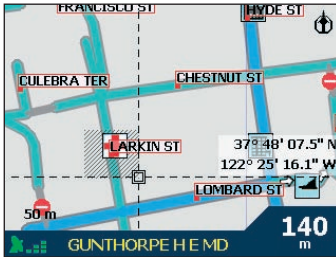
Menu Option	Description
Navigate To	Calculates a route from your current location.
Set as Start Location	Sets the selected point as your departure point. SmartST will calculate and display the route to your destination.
Add to Favourites	Displays the <i>New Favourite</i> screen for you to add the selected point as a Favourite.
Show Details	Displays the <i>Address Details</i> screen from which you can: <ul style="list-style-type: none"> <li>View details of the selected point</li> <li>Add the point to your multi-stop trip.</li> <li>Set the point as your destination point</li> <li>Save the point as a Favourite.</li> </ul>
Add Avoid Area	Adds an Avoid Area for you to size.
Delete Avoid Area	Deletes the selected Avoid Area.
Nearest POI	Displays the <i>Select POI</i> screen. Select the POI type, then the POI to navigate to.

# 13. Avoiding an Area

You can calculate a route that avoids a specified area on the map. Up to ten Avoid Areas can be added. Avoid Areas are displayed as shaded areas. If no alternative route around an Avoid Area exists, you will be routed through an Avoid Area.

## Adding an Avoid Area

1. From the *Main Menu* screen, tap **Map**.  
The *2D Map* screen will display.
2. Tap the *Map* screen or press the **4-way toggle** button to display the cross-hairs.
3. Use the stylus or **4-way toggle** to position the intersection of the cross-hairs to the area that you want to avoid.
4. Tap the intersection of the cross-hairs, or press the **4-way toggle** button to display the *Pop-up* menu.
5. Select **Add Avoid Area**.  
An Avoid Area is displayed.




6. Set the Avoid Area to the correct size and position using the **4-way toggle**.
7. Tap the Avoid Area or press the **4-way toggle** to enable the Avoid Area.

## Deleting an Avoid Area

1. From the *Main Menu* screen, select **Map**.  
The *2D Map* screen will display.
2. Tap the *Map* screen and move the cross-hairs over the Avoid Area that you want to delete.
3. Tap the intersection of the cross-hairs, or press the **4-way toggle** button to display the *Pop-up* menu.
4. Select **Delete Avoid Area**.  
The Avoid Area is deleted.

## Deleting All Avoid Areas

1. From the *Main Menu* screen, tap **Preferences**.
2. From the *Preferences* screen, tap **My Data**.  
The *My Data* screen will display.
3. From the *My Data* screen, tap **Clear Data**.  
The *Clear Data* screen will display.
4. Select **Clear Avoid Areas**. When the warning dialog-box opens, select **Yes**.
5. To return to the *Main Menu*, press .




# 14. Route Demonstrator

The Route Demonstrator allows you to:

- Preview a route.
- Plan and view a route without a GPS fix, such as when you are inside a building.

## Step One: Activate Route Demonstrator

1. From the *Main Menu* screen, tap **Preferences**.
2. From the *Preferences* screen, tap **Routing**.  
The *Routing* screen will display.
3. Press  twice.
4. Select the *Demonstrate Route* check box.
5. Tap **Save**.  
The *Main Menu* screen will display.

## Step Two: Select Departure Point

If you have a GPS fix, you do not need to select a departure point unless you want the demonstrated route to start elsewhere.



1. From the *Main Menu* screen, tap **Map**.  
The *2D Map* screen will display.
2. Tap the *Map* screen or press the **4-way toggle** button to display the cross-hairs.
3. Position the intersection of the cross-hairs on your departure point. Where the cross-hairs intersects on a street, the street will highlight and the street name will display.
4. Tap the intersection of the cross-hairs, or press the **4-way toggle** button.  
The *Pop-up* menu will display.
3. Select **Set as Start Location**.  
The *Pop-up* menu will close.

## Step Three: Select Destination Point

Set a destination either by using the *Destination* screen (see pages 21-37) or by using the *2D Map* screen *Pop-up* menu by completing the following:

2. Tap the *Map* screen or press the **4-way toggle** button to display the cross-hairs.
2. Position the intersection of the cross-hairs on your destination point. Where the cross-hairs intersects on a street, the street will highlight and the street name will display.
3. Tap the intersection of the cross-hairs, or press the **4-way toggle** button.  
The *Pop-up* menu will display.
4. Select **Navigate To**.  
The *Pop-up* menu will close. The *3D Map* screen will display the calculated route in Route Demonstrator mode.
  - If you have selected the *Repeat* check box on the *Routing* preferences screen, the Route Demonstrator will continue to repeat the route.

## To Disable Route Demonstrator

1. Press  to display the *Main Menu* screen.
2. From the *Main Menu* screen, tap **Preferences**.
3. From the *Preferences* screen, tap **Routing**.  
The *Routing* screen will display.
4. Press  twice.
5. Clear the *Demonstrate Route* check box.
6. Tap **Save**.  
Route Demonstrator will be disabled. The *Main Menu* screen will display.

# 15. Favourites and My Home

You can save up to 200 destinations as Favourites, one of which can be saved as My Home. My Home can be any designated Favourite, but we recommend that it is your home or other common destination. You can save a Favourite from the *Preview* screen after searching for an address, or from the *Pop-up Menu* on the *2D Map* screen.

## Saving a Favourite

1. Either search for an address using the *Destination* and *Keyboard* screens as described in *Setting Your Destination*, pages 21-37, or create a multi-stop trip as described in *Multi-stop Trips*, pages 39-49, until the *Preview* screen is displayed.

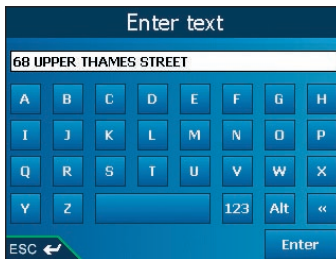
2. Tap **Save**.

The *New Favourite* screen will display.



3. To change the name of the Favourite, tap the **Name** box.

The *Enter text* screen will display.



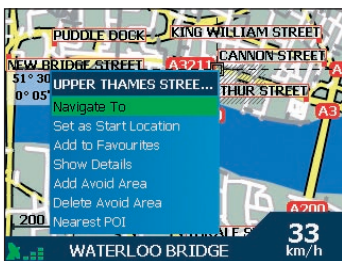
- To select a character, tap the character.
- To delete a character, press **ESC** or tap <<; hold **ESC** to delete the line.
- To display the number/symbol *Enter text* screen, tap **123**.
- To display the alternate *Enter text* screen, press **+**, or tap **Alt**.
- To display the alphabet *Enter text* screen, press **-**, or tap **ABC**
- After you have entered a name for the Favourite, tap **Enter**.  
The *New Favourite* screen will display.

4. Complete one of the following:

- To save as a favourite, tap **Save as Favourite**.  
The Favourite is saved. The *Go To* screen will display.
- To save as My Home, tap **Save as My Home**.  
The Favourite is saved as My Home. The *Go To* screen will display.

## Saving a Favourite from the *2D Map* Screen

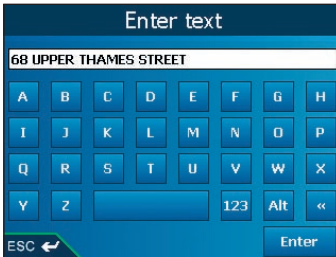
1. From the *Main Menu*, select **Map**.  
The *2D Map* screen will display.
2. Tap the *Map* screen or press the **4-way toggle** button to display the cross-hairs.
3. Position the intersection of the cross-hairs. Where the cross-hairs intersects on a street, the street will highlight and the street name will display.
4. Tap the intersection of the cross-hairs, or press the **4-way toggle** button.  
The *Pop-up* menu will display



5. Select **Add to Favourites**.  
The *New Favourite* screen will display.



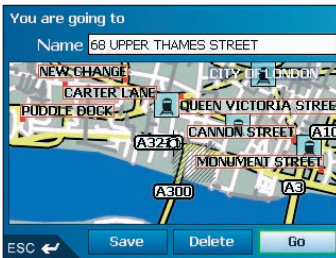
6. To change the name of the Favourite, select the **Name** box.  
The *Enter text* screen will display.



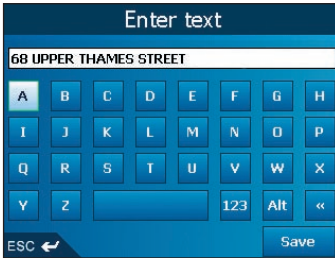
- To select a character, tap the character.
  - To delete a character, press **ESC** or tap <<; hold **ESC** to delete the line.
  - To display the number/symbol *Enter text* screen, tap **123**.
  - To display the alternate *Enter text* screen, press +, or tap **Alt**.
  - To display the alphabet *Enter text* screen, press -, or tap **ABC**.
  - After you have entered a name for the Favourite, tap **Enter**.  
The *New Favourite* screen will display.
7. Complete one of the following:
- To save as a favourite, tap **Save as Favourite**.  
The Favourite is saved. The *Go To* screen will display.
  - To save as My Home, tap **Save as My Home**.  
The Favourite is saved as My Home. The *Go To* screen will display.

## Editing the Name of the Favourite

1. From the *Main Menu*, tap **Go To**.
2. From the *Go To* screen, tap **Favourites**.  
The *Favourite* screen will display.
3. Select a Favourite to edit.  
The *Preview Favourite* screen will display.



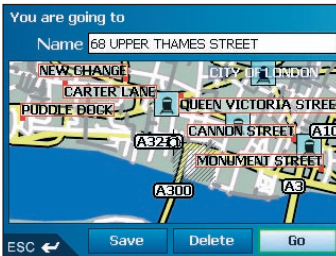
4. Tap the **Name** box.  
The *Enter text* screen will display.



- To select a character, tap the character.
  - To delete a character, press **ESC** or tap <<; hold **ESC** to delete the line.
  - To display the number/symbol *Enter text* screen, tap **123**.
  - To display the alternate *Enter text* screen, press +, or tap **Alt**.
  - To display the alphabet *Enter text* screen, press -, or tap **ABC**
  - After you have entered a name for the Favourite, tap **Save**.  
The *New Favourite* screen will display.
5. Complete one of the following:
- To save as a favourite, tap **Save as Favourite**.  
The Favourite is saved. The *Go To* screen will display.
  - To save as My Home, tap **Save as My Home**.  
The Favourite is saved as My Home. The *Go To* screen will display.

## Deleting a Favourite

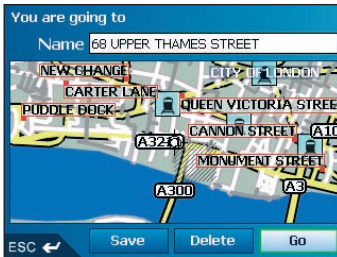
1. From the *Main Menu*, tap **Go To**.
2. From the *Go To* screen, tap **Favourites**.  
The *Favourite* screen will display.
3. Select a Favourite to delete.  
The *Preview Favourite* screen will display.



4. Tap **Delete**.  
A Warning dialogue box will display asking for confirmation to delete the Favourite.
5. Tap **Yes**.  
The Favourite is deleted. The *Favourite* screen will display.

## Navigating to a Favourite

1. From the *Main Menu*, tap **Go To**.
2. From the *Go To* screen, tap **Favourites**.  
The *Favourite* screen will display.
3. Select a Favourite.  
The *Preview Favourite* screen will display.



4. Tap **Go**.  
The route is calculated and displayed on the *3D Map* screen.

## Navigating to My Home

1. From the *Main Menu*, tap **Go To**.
2. From the *Go To* screen, tap **My Home**.  
The route is calculated and displayed on the *3D Map* screen.

# 16. Preferences

You can modify the following preferences to suit your needs.

## Screen Brightness

1. Press and hold either the **+** or **-** button to display the *Brightness* scale.
2. To increase screen brightness, press **+**; To decrease screen brightness, press **-**.  
The *Brightness* scale comprises ten rectangular boxes in a row. As screen brightness is increased, the first seven boxes progressively turn from gray to green; the last three turn red.

You can also adjust brightness from the *Screen* preference screen. See page 74.

## Volume

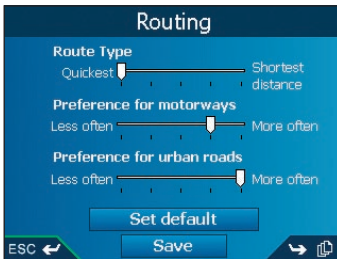
1. Rotate the **Volume Control** button up or down to hear a sound test.
2. Rotate the **Volume Control** button up or down and hold to display the volume bar.
  - Rotate the **Volume Control** button up or down to adjust the volume.

You can also adjust volume from the *Volume* preference screen. See page 75.

## Routing Preferences

1. From the *Main Menu*, tap **Preferences**.
2. From the *Preferences* screen, tap **Routing**.

The first of three *Routing* screens will display. Press  to move through the *Routing* screens.



3. Complete one of the following:

If you want to...	Then...
change the <b>Route Type</b>	move the <b>Route Type</b> slider towards <b>Quickest</b> to give more weighting to the fastest time when calculating a route. move the <b>Route Type</b> slider towards <b>Shortest distance</b> to give more weighting to the shortest distance when calculating a route.



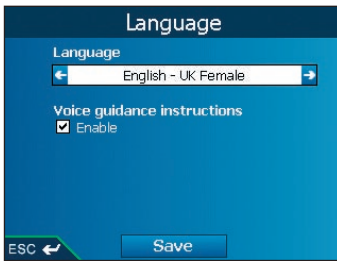
If you want to...	Then...
change the <b>Preference for motorways</b>	move the <b>Preference for motorways</b> slider towards <b>Less often</b> to use roads other than motorways where possible when calculating a route.  move the slider towards <b>More often</b> to use motorways where possible when calculating a route.
change the <b>Preference for urban roads</b>	move the <b>Preference for urban roads</b> slider towards <b>Less often</b> to use roads other than urban roads where possible when calculating a route.  move the <b>Preference for urban roads</b> slider towards <b>More often</b> to use urban roads where possible when calculating a route.
revert to default settings	select <b>Set default</b> on the first <i>Routing</i> screen. This will restore default setting for <b>Route Type</b> , <b>Preference for motorways</b> and <b>Preference for urban roads</b> .
avoid toll roads	select the <b>Avoid toll roads</b> check box.
avoid unsurfaced roads	select the <b>Avoid unsurfaced roads</b> check box.
avoid ferries	select the <b>Avoid ferries</b> check box.
receive a warning if your route includes toll roads	select the <b>Toll roads</b> check box to display a warning message at the start of your trip, if your route includes toll roads.
receive a warning if your route includes unsurfaced roads	select the <b>Unsurfaced roads</b> check box to display a warning message at the start of your trip, if your route includes unsurfaced roads.
receive a warning if your route includes ferries	select the <b>Ferries</b> check box to display a warning message at the start of your trip, if your route includes ferries.
enable the Route Demonstrator	select the <b>Demonstrate Route</b> check box. This allows you to plan and view a route without a GPS fix. See page 55 for more information.
enable the Route Demonstrator to play repeatedly	select the <b>Repeat</b> check box.
enable SmartST Demonstration to be played	select the <b>SmartST Demonstration</b> check box. The demonstration will navigate between the first and second Favourite after a 10-second delay.

If you want to...	Then...
enable <b>Track Recording</b> (only to be used if required by Navman Customer Support)	contact Navman Customer Support, as we recommend this feature be used only under the supervision of a Navman technician.

4. Tap **Save**.  
The *Main Menu* screen will display.

## Language Preferences

1. From the *Main Menu*, tap **Preferences**.
2. From the *Preferences* screen, tap **Language**.  
The *Language* screen will display.



3. To change your language, including the voice scheme used for voice-guidance during navigation, select your preferred voice scheme from the **Language** box by tapping the left or right arrows or using the left and right sides of the **4-way toggle**.

**iCN 510:** If you (a) purchased your iCN in Australia, Canada, New Zealand or United States, or (b) you are using a different memory card to that supplied with your iCN, or (c) files on your original memory card have been deleted, then English is the only language available.

To change the language from English, see *Installing a Language on Your iCN 510* on page 84.

**iCN 520:** Only languages installed on the internal memory of your iCN will be available for selection. For more information, see *Installing a Language to Your iCN 520* on page 19.

4. To enable **Voice guidance instructions** during navigation, select the **Enable** check box.
5. Tap **Save**.  
The *Main Menu* screen will display.

## Map Preferences — Display Settings

1. From the *Main Menu*, tap **Preferences**.
2. From the *Preferences* screen, tap **Maps**.
3. From the *Maps* screen, tap **Display**.

The first of two *Display* screens will display. Press  to move through the *Display* screens.

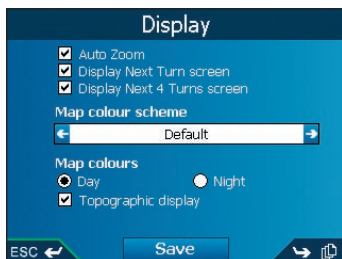


Figure 1: iCN 510

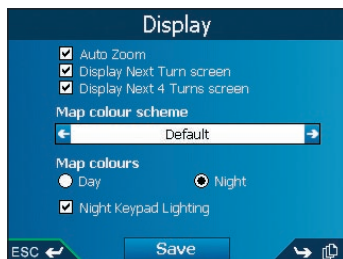


Figure 2: iCN 520

4. Complete the following:


If you want to...	Then...
enable Auto Zoom during navigation	select the <b>Auto Zoom</b> check box. If selected, the <i>2D Map</i> and <i>3D Map</i> screen will automatically zoom in or out, depending on your speed, to allow optimal route-viewing.
enable access to the <i>Next Turn</i> screen	select the <b>Display Next Turn screen</b> check box.
enable access to the <i>Next 4 Turns</i> screen	select the <b>Display Next 4 Turns screen</b> check box.
change the colour scheme	select your preferred scheme from the <b>Map colour scheme</b> box by tapping the left or right arrows or using the left and right sides of the <b>4-way toggle</b> .
improve screen contrast in light or dark conditions	under <b>Map colours</b> , select either <b>Day</b> or <b>Night</b> . <b>iCN 520 only:</b> If <b>Night</b> is selected, the <b>Night Keypad Lighting</b> checkbox will be enabled.
<b>iCN 520 only:</b> turn on the keypad backlight when the iCN is using external power <i>Note: This option is only available when <b>Map colours</b> is set to <b>Night</b>.</i>	select the <b>Night Keypad Lighting</b> check box.
display topographical information on the <i>2D Map</i> and <i>3D Map</i> screens	select the <b>Topographic display</b> check box.

If you want to...	Then...
display grid lines on the <i>2D Map</i> and <i>3D Map</i> screens	select the <b>Display Map Grid</b> check box.
display a north-pointing compass on the <i>2D Map</i> and <i>3D Map</i> screens	select the <b>Display Compass on Map</b> check box.
display "no entry" icons on "no entry" roads on the <i>2D Map</i> and <i>3D Map</i> screens	select the <b>Display no entry roads</b> check box.

5. Tap **Save**.  
The *Main Menu* screen will display.

## Map Preferences — Memory Card

1. From the *Main Menu*, tap **Preferences**.
2. From the *Preferences* screen, tap **Maps**.
3. From the *Maps* screen, tap **Memory card**.  
The *Maps - Memory card* screen will display.
4. To activate a map, select the map check box.

*Note: There may be more than one page of map listings, depending on the number of maps installed. To view additional pages of map listings, scroll down using the **4-way toggle**, or press .*

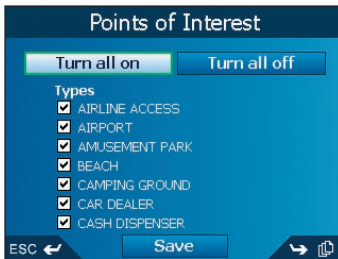
5. Repeat step 4 until all required maps are selected.
6. Tap **Save**.  
The *Main Menu* screen will display.

## Map Preferences — Points of Interest (POIs)


Points of Interest in a region are grouped into types. This function allows you to select the types you need. For example, you may be only interested in entertainment venues and want to disable other POI types such as schools.

1. From the *Main Menu*, tap **Preferences**.
2. From the *Preferences* screen, tap **Maps**.
3. From the *Maps* screen, tap **Points of Interest**.

The *Points of Interest* screen will display.



4. You may either choose to display (or hide) icons of all POI types on the *2D Map* and *3D Map* screens, or to selectively display desired icons chosen from the list of POI types.
  - To display all POI icons (i.e., icons of all POI types) on the *2D Map* and *3D Map* screens, select **Turn all on**. To display no icons, select **Turn all off**.
  - To select a specific POI type icon for display, select the POI type check box. Repeat until all desired POI types are selected.

*Note: There may be more than one page of POI types, depending on the installed maps. To view additional pages of POI types, scroll down using the 4-way toggle, or press .*

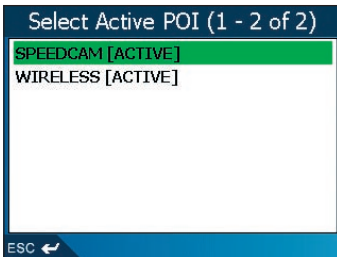
5. Tap **Save**.  
The *Main Menu* screen will display.

## Alerts Preferences — Active POIs

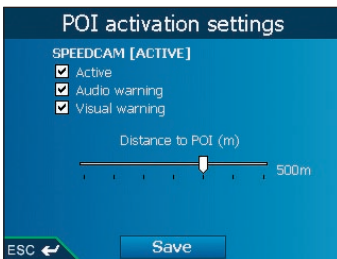
The Active POI settings allow you to set warning chimes and visual warnings for custom POIs that will activate within a chosen distance-radius of your location. For example, a warning chime will sound or a visual warning will display when an active POI is within 150 ft of, but not necessarily on, your route.

*Note: Custom POIs must first be installed on your iCN using SmartST Desktop before they can be set as active POIs. See Points of Interest (POI) Editor on pages 89-91.*

1. From the *Preferences* menu, tap **Safety Alerts**.  
The *Safety Alerts* screen will display.
2. On the *Safety Alerts* screen, tap **Active POI**.  
The *Select Active POI* screen will display.



3. Select a custom POI type.  
The *POI Activation Settings* screen will display.

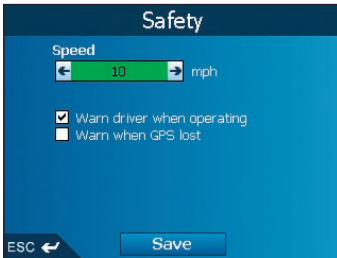


4. Select the **Active** check box to activate the POI.
5. Modify the settings as required:
  - To enable a warning chime when the POI is in close proximity, select the **Audio warning** check box.
  - To enable a visual warning when the POI is in close proximity, select the **Visual warning** check box.
  - Move the **Distance to POI** slider to select the distance at which the warnings will activate.
6. Tap **Save**.  
The *Main Menu* screen will display.

# Alerts Preferences - Speed and GPS Signals

The Safety settings allow you to set safety-related warnings.

1. From the *Preferences* menu, tap **Safety Alerts**.  
The *Safety Alerts* screen will display.
2. On the *Safety Alerts* screen, tap **Safety**.  
The *Safety* screen will display.



3. Complete the following:


If you want to...	Then...
enable a warning chime when traveling at or above a designated speed	select the speed in the <b>Speed</b> box by tapping the left or right arrows or using the left and right sides of the <b>4-way toggle</b> . Tap <b>Save</b> . The <i>Safety alerts</i> screen will display. <i>Note: The GPS signal alert will be activated when a Speed alert is selected.</i>
enable a visual warning if the <i>Main Menu</i> screen is accessed in a moving vehicle	select the <b>Warn driver when operating</b> check box.
enable a warning chime and visual warning when the GPS signal has been lost	select the <b>Warn when GPS lost</b> check box. <i>Note: The GPS signal alert will be activated when a Speed alert is selected.</i>

4. Tap **Save**.  
The *Main Menu* screen will display.

# My Data Preferences - My Points of Interest (My POI)

Custom Points of Interest (POIs) are installed from the SmartST Desktop POI Editor (see pages 86-85), and listed on the *My POIs* screen.

1. From the *Main Menu*, tap **Preferences..**
2. From the *Preferences* screen, tap **My Data.**
3. From the *My Data* screen, tap **My POI.**  
The *My POI* screen will display.
4. To select a POI file, select the POI check box.

*Note: There may be more than one page of POI types, depending on the number of maps installed. To view additional pages of POI types, scroll down using the 4-way toggle, or press .*

5. Tap **Save.**  
The *Main Menu* screen will display.

# My Data Preferences - Clear Data

1. From the *Main Menu* screen, tap **Preferences.**  
The *Preferences* screen will display.
2. From the *Preferences* screen, tap **My Data.**  
The *My Data* screen will display.
3. From the *My Data* screen, tap **Clear Data.**  
The *Clear Data* screen will display.
4. Complete the following:

If you want to...	Then...
clear recent destinations	select <b>Clear Recent.</b> When the warning dialog-box opens, tap <b>Yes.</b>
clear favourites	select <b>Clear Favourites.</b> When the warning dialog-box opens, tap <b>Yes.</b> <i>Note: This option will not clear My Home.</i>
clear avoid areas	select <b>Clear Avoid Areas.</b> When the warning dialog-box opens, tap <b>Yes.</b>

5. Press  to return to the *Main Menu* screen.



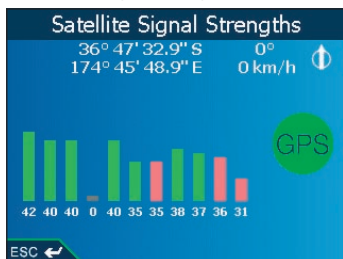
## GPS Status


Signals are transmitted by Global Positioning System (GPS) satellites orbiting the Earth. The *Satellite Signal Strengths* screen provides a visual representation of the information being received.

Latitude and longitude are displayed, along with a north-pointing compass, the heading in degrees and ground speed. The strength of each satellite is displayed on a bar chart.

From the *Main Menu* screen, select *Preferences* → *More Preferences* → *GPS status*.

The *Satellite Signal Strengths* screen will display.



You can also access this screen from the *2D Map*, *3D Map*, *Next Turn* and *Next 4 Turns* screens, by tapping the **GPS Strength Indicator** .

The circle on the right side of the screen displays green when there is a valid fix (2D or 3D), and red when no fix is available. A fix will be obtained more quickly if the vehicle is stationary than if it is moving.

The satellites available from your current position are shown as grey, red and green coloured bars:

Bar Colour	Description
Grey	No signal at all
Red	A valid signal, but not being used to fix your position
Green	A valid signal being used to fix your position

## Measurement Preferences

1. From the *Main Menu* screen, tap **Preferences**.  
The *Preferences* screen will display.
2. From the *Preferences* screen, tap **More Preferences**.  
The second *Preferences* screen will display.
3. On the second *Preferences* screen, select **Measurements**.  
The *Measurements* screen will display.
4. Complete the following:

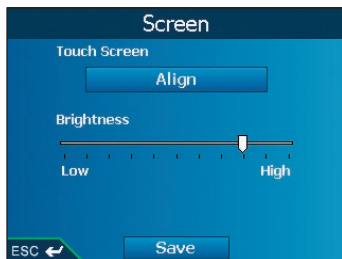
If you want to...	Then...
change the <b>Position format</b>	select either the <b>Decimal degrees</b> or the <b>Degrees, minutes, seconds</b> option.
change the local time offset	select the offset from the Coordinated Universal Time (UTC) for your location from the <b>Local time offset</b> box by tapping the left or right arrows or using the left and right sides of the <b>4-way toggle</b> . Next, select either the <b>12 Hour</b> or <b>24 Hour</b> option for time-format.
choose distance units*	select either the <b>kilometres</b> or <b>miles</b> option.

5. Tap **Save**.  
The *Main Menu* screen will display.

\* Only available when UK English or US English language is selected.

## Hardware Preferences - Screen

1. From the *Main Menu* screen, tap **Preferences**.  
The *Preferences* screen will display.
2. From the *Preferences* screen, tap **More Preferences**.  
The second *Preferences* screen will display.
3. On the second *Preferences* screen, tap **Hardware**.  
The *Hardware* screen will display.
4. From the *Hardware* screen, tap **Screen**.  
The *Screen* screen will display.



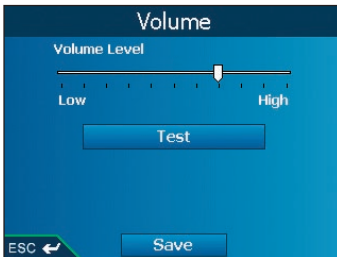
5. Complete the following:

If you want to...	Then...
align the touch screen	tap <b>Align</b> and follow the prompts. <i>Note: The prompts are available in English only.</i>
adjust screen brightness	move the <b>Brightness</b> slider towards <b>High</b> to increase screen brightness. move the <b>Brightness</b> slider towards <b>Low</b> to decrease screen brightness.

6. Tap **Save**.  
The *Main Menu* screen will display.

## Hardware Preferences - Volume

- From the *Main Menu* screen, tap **Preferences**.  
The *Preferences* screen will display.
- From the *Preferences* screen, tap **More Preferences**.  
The second *Preferences* screen will display.
- On the second *Preferences* screen, tap **Hardware**.  
The *Hardware* screen will display.
- From the *Hardware* screen, tap **Volume**.  
The *Volume* screen will display.

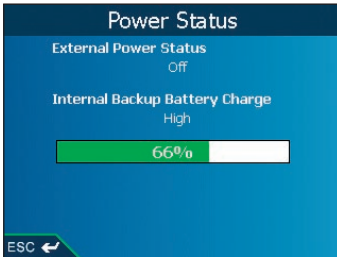



- To increase volume, move the **Volume Level** slider towards **High**; to decrease volume, move the **Volume Level** slider towards **Low**.
  - Tap **Test** to test the volume.
- Tap **Save**.  
The *Main Menu* screen will display.

## Hardware Preferences - Power Status

- From the *Main Menu* screen, tap **Preferences**.  
The *Preferences* screen will display.
- From the *Preferences* screen, tap **More Preferences**.  
The second *Preferences* screen will display.

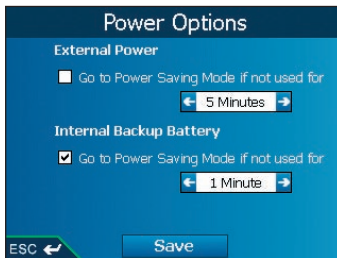
- On the second *Preferences* screen, tap **Hardware**.  
The *Hardware* screen will display
- From the *Hardware* screen, tap **Power Status**.  
The *Power Status* screen will display.



- Press  to return to the *Main Menu* screen.

## Hardware Preferences - Power Options

- From the *Main Menu* screen, tap **Preferences**.  
The *Preferences* screen will display.
- From the *Preferences* screen, tap **More Preferences**.  
The second *Preferences* screen will display.
- On the second *Preferences* screen, tap **Hardware**.  
The *Hardware* screen will display
- From the *Hardware* screen, tap **Power Options**.  
The *Power Options* screen will display.



- Complete the following:

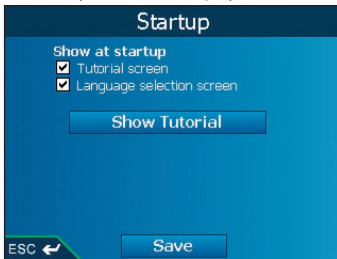
If you want to...	Then...
change the time to elapse before entering suspended state, when connected to an external power source	select the <b>Go to Power Saving Mode if not used for</b> check box under <b>External Power</b> . select the time to elapse when connected to an external power source before entering suspended state by tapping the left or right arrows or using the left and right sides of the 4-way toggle.

If you want to...	Then...
change the time to elapse before entering suspended state, when using battery power	select the <b>Go to Power Saving Mode if not used for</b> check box under <b>Internal Backup Battery</b> . select the time to elapse when connected to an external power source before entering suspended state by tapping the left or right arrows or using the left and right sides of the 4-way toggle.


6. Tap **Save**.  
The *Main Menu* screen will display.

## Startup Preferences

- From the *Main Menu* screen, tap **Preferences**.  
The *Preferences* screen will display.
- From the *Preferences* screen, tap **More Preferences**.  
The second *Preferences* screen will display.
- On the second *Preferences* screen, tap **Startup**.  
The *Startup* screen will display.



4. Complete the following:

If you want to...	Then...
display the <i>Tutorial</i> on startup	select the <b>Tutorial screen</b> check box.
display the <i>Language</i> screen on startup	select the <b>Language selection screen</b> check box. <i>Note: If only one language is available on the iCN, the Language screen will not display on startup, even if this check box is selected.</i>
view the <b>Tutorial</b>	select <b>Show Tutorial</b> . The first <i>Tutorial</i> screen will display. Press  repeatedly to cycle through the <b>Tutorial</b> screens.

5. Tap **Save**.  
The *Main Menu* screen will display.

# 17. SmartST Desktop

SmartST Desktop is used to manage maps to and from your iCN, obtain software updates, manage Custom Points of Interest (POIs) and install Basemaps.

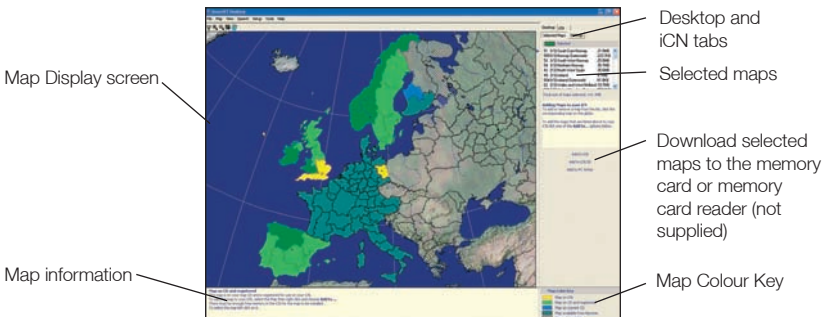
*Note: For Windows® XP, ensure that Windows XP Service Pack 1 has been applied before you install SmartST Desktop.*

## Microsoft® ActiveSync®

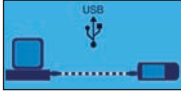
Microsoft ActiveSync is used to establish a connection between your iCN and your computer. ActiveSync 3.7.1 will be installed on your computer (if it is not already installed) as part of the installation of SmartST Desktop.

## Installing SmartST Desktop on your Computer

1. Close all open programs on your computer.
2. Insert the SmartST Application Installer CD into your computer CD drive.  
The SmartST Desktop installer will start.
  - If your computer does not automatically launch the CD, start the installation manually:  
*Start → Run.*  
Type **D:\Setup SmartST 2005 for iCN500 Series.exe** where "D" is the letter assigned to your CD drive. Click **OK**.
3. Follow the screen prompts to install SmartST Desktop, including:
  - Select your preferred language for SmartST Desktop when prompted.
  - Review and accept the Licence Agreement for SmartST Desktop and Microsoft ActiveSync (if not already installed on your computer) when prompted.
  - Install Microsoft ActiveSync (if not already installed on your computer) when prompted.
  - Select a destination folder for SmartST Desktop when prompted.
4. When the installation has finished, click **Finish**.  
SmartST Desktop will open.



5. If prompted to connect your iCN to your computer, complete the following:
  - Plug the large end of the USB cable directly into a USB port on your computer (not a USB hub); plug the small end into the **USB Socket** on the bottom of your iCN.
  - Plug the small end of the AC Power Pack cable into the **Power Socket** on the bottom of your iCN; plug the other end into the mains.
  - Press **1**.  
The iCN will turn on.
  - When the following screen displays on your iCN, click **Next**.



- Microsoft ActiveSync will synchronise with your iCN.

You are now ready to install maps to your iCN.


## To Open SmartST Desktop

Once SmartST Desktop has been installed, you can access it from the **Start** menu:

*Start → Programs → Navman → SmartST Desktop 2005 for iCN500 series*

## Uninstalling SmartST Desktop from your Computer

We recommend that you use the *Add or Remove Programs* feature in your Windows Control Panel:

1. Open **Add or Remove Programs**:  
*Start → Control Panel → Add or Remove Programs*
2. Uninstall:  **Navman SmartST Desktop 2005 for iCN500 Series**.

*Note: The name of the program may vary from the above.*

SmartST Desktop has now been uninstalled from your computer.

# 18. Updating your iCN

## Updating your Version of SmartST

We recommend that you regularly use SmartST Desktop to check the Navman website for SmartST software updates:

1. If you connect to the Internet via a dial-up connection, connect to the Internet now.
2. Open SmartST Desktop:  
*Start → Programs → Navman → SmartST Desktop 2005 for iCN500 series*
3. On the **Setup** menu, select **Update software**, then **Check for updates on the web**.  
Your computer will connect to the Internet and display the Navman website.
4. Download the update for your region to your computer, if available.
5. On the **Setup** menu, select **Update software**, then **Update software on iCN**.  
Follow the prompts to update your iCN software.

## Upgrading from Previous Version of SmartST

See the *Upgrade Guide* that came with your software upgrade.



# 19. Installing Maps Using SmartST Desktop

Your iCN comes with a preactivated map. If you require additional maps, you must first purchase a Map Product Key. Use SmartST Desktop to activate your Map Product Key and install the required map.

## Installing and Activating Maps on your iCN

1. Open SmartST Desktop, if it is not already open:  
*Start → Programs → Navman → SmartST Desktop*
2. Insert a SmartST Map CD into your computer CD drive, the available maps will display (the default colour for available maps is *cross-hatch blue*).

*Note: If your computer opens Windows Explorer, close the Windows Explorer window.*



Maps available on the Map CD in your CD drive are displayed in cross-hatch blue.

3.
  - **Australian, New Zealand and North American users:** If you have already activated a Map Product Key for your country, go to step 7; otherwise continue to step 4.
  - **European users:** If you have already activated a Gold/Pan-European Map Product Key (activates all maps in Europe), go to step 7; otherwise continue to step 4.
4. Click the map you want to install to your iCN.  
*Note: You may need to install multiple maps to cover the desired geographical area.*
5. If you connect to the Internet via a dial-up connection, connect to the Internet now.
6. Follow the prompts to activate your Map Product Key, including:
  - Enter your Map Product Key from the back of the CD box when prompted.
  - You will be prompted to enter or update your contact details so Navman can advise you when updates are released.
  - Your computer will connect to the Internet and activate your Map Product Key.
  - If you are activating a map from a continental region that was not previously installed on your iCN, follow the prompts to activate the new region. The four continental regions are Europe, North America, Australia and New Zealand.



- When activation has completed, the map will change colour (the default colour for activated maps is *light green*). Proceed to step 7.



The activated map is displayed in light green.

7. Click the map to install to your iCN.  
The map will change colour to indicate it has been selected (the default colour for selected maps is *dark green*). The map is now listed in the **Selected** section of the **Desktop Selected Maps** tab.
8.
  - **Australian, New Zealand and North American users:** If you have already activated a Map Product Key for your country, repeat step 7 until all required maps have been added to the **Selected** section of the **Desktop Selected Maps** tab.
  - **European Gold/Pan-European Map Product Key users:** If you have already activated a Gold/Pan-European Map Product Key (activates all maps in Europe), repeat step 7 until all required maps have been added to the **Selected** section of the **Desktop Selected Maps** tab.
  - **European Silver/Single Map Product Key users:** If you have another Silver/Single Map Product Key to activate (activates a single map), go to step 4.



The selected map is displayed in dark green.

9. Click an **Add to** button to install all maps listed in the **Selected** section of the **Desktop Selected Maps** tab to your iCN, memory card, or memory card reader (not supplied). SmartST Desktop will install the selected map or maps to your iCN or iCN memory card. When they have been installed, the map or maps will change colour (the default colour for installed maps is *yellow*).
10. To use your iCN, disconnect the USB cable from your iCN.

**WARNING:** Do not disconnect the USB cable from the iCN **USB Socket** until the *Map Display* screen has refreshed, and the installed map or maps have changed colour (the default colour for installed maps is *yellow*).

## Removing Maps from your iCN

1. Open SmartST Desktop:  
*Start → Programs → Navman → SmartST Desktop 2005 for iCN500 series*
2. Open the **Maps on iCN** section:  
*iCN tab → Maps on iCN.*
3. Click the map to be removed and select **Remove from iCN** from the pop-up menu.  
The map will be removed from your iCN.

# 20. Installing a Language on Your iCN 510

The iCN 510 stores English language files in the iCN internal memory by default and other languages on the memory card that came with your iCN.

The following procedure will replace English on your iCN with another language. Only complete this procedure if one of the following conditions applies:

- You want to use a memory card other than the one that came with your iCN,
- One or more files was deleted from your memory card, or
- You purchased your iCN in United Kingdom or Australia and want to install a language other than English.

## Prerequisites


You must have these programs installed on your computer:

- SmartST Desktop (in the language that you require), and
- Microsoft ActiveSync 3.7.1 (or higher).

If you do not have both programs installed, install them now by completing *Installing SmartST Desktop on Your Computer* on page 78.

*Note: If you already have SmartST Desktop installed, but in a language other than the one you want to install on your iCN, you must first uninstall SmartST Desktop (see Uninstalling SmartST Desktop on page 79), then reinstall SmartST Desktop in the correct language. For example, if you want to install French on your iCN, you must have SmartST Desktop installed on your computer in French.*

## Step One: Remove SmartST From Your iCN

1. Insert the memory card in your iCN **SD/MMC** slot.
2. Plug the small end of the USB cable into the USB Socket on the bottom of your iCN and the other end into your computer USB socket.  
Microsoft ActiveSync will open and synchronise with your iCN.
3. In Microsoft ActiveSync, click .  
Windows Explorer will open, displaying the contents of the iCN.
4. In Windows Explorer, select the **Program Files** folder and delete it.
  - If you are asked for confirmation, click **Yes**.
5. In Windows Explorer, open the **My Flash Disk** folder.  
The contents of My Flash Disk will display.
6. Select all files and folders in the **My Flash Disk** folder and delete them.
  - If you are asked for confirmation, click **Yes**.
7. Close Windows Explorer.
8. Use the stylus to switch the **Battery Switch** on the back of the iCN to **OFF**.



9. Wait five seconds, then switch the **Battery Switch** to **ON**.  
The iCN will turn on and display the blue *USB* screen. Microsoft ActiveSync will resynchronise with your iCN

## Step Two: Reinstall SmartST on Your iCN

1. Ensure that your iCN is still on and connected to your computer, then open SmartST Desktop:  
*Start → Programs → Navman → SmartST Desktop*
2. You will be prompted to install SmartST on your iCN. Click **Yes** and follow the prompts on your computer and iCN.
3. You will be prompted to register your iCN. Click **No**, as your iCN has been preregistered.
4. On the **Tools** menu, select **Recover registration information from Navman**.
5. Follow the prompts to recover your iCN registration information:
  - Your computer will connect to the Internet to recover your iCN registration information.
  - When your registration information is displayed, click **Next**. There is no need to enter an Application Key, as your iCN has been preregistered.
6. When registration recovery is complete, close SmartST Desktop and disconnect your iCN from your computer.  
Your iCN will restart in the new language.

# 21. Continuous Continental Navigation

Basemaps allow you to seamlessly navigate between installed maps without installing maps of all regions along your route. Each Basemap covers a large area, such as Western Europe or continental United States; and contains main roads that connect cities and towns. On the Basemap, you can select a road or POI as your departure point or destination.

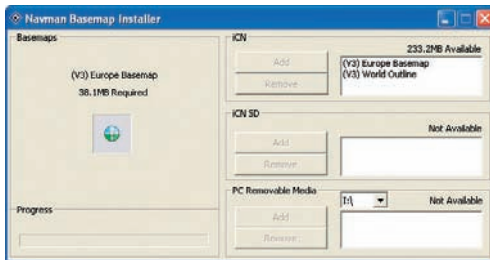
All Basemaps:

- contain roads and ferry connections of high national and international importance.
- use less memory than would be necessary to install all equivalent detailed maps.
- exclude smaller roads and have a reduced level of geographical detail.

You can add and remove Basemaps using the Basemap Installer (see below).

## Install Basemap

1. Open SmartST Desktop if it is not already open:  
*Start → Programs → Navman → SmartST Desktop 2005 for iCN500 series.*
2. On the **Map** menu, click **Basemaps**.  
The *Navman Basemap Installer* window will open.



3. Click the appropriate **Add** button to install the Basemap to the iCN, memory card or memory card reader (not supplied).

## Activate Basemap

1. Disconnect the USB cable from the iCN.  
The iCN will turn on.
  - If the iCN does not turn on, press **⓪**.
2. From the iCN *Main Menu* screen, tap **Preferences**.
3. From the *Preferences* screen, tap **Maps**.
4. Complete one of the following:
  - If the Basemap is on the iCN, from the *Maps* screen, select **Internal Memory**.  
The *Maps - Internal Memory* screen will display.
  - If the Basemap is on the memory card, from the *Maps* screen, select **Memory Card**.  
The *Settings - Memory Card* screen will display.
5. To activate the Basemap, select the Basemap check box.
6. Tap **Save**.  
The *Main Menu* screen will display.

## Remove Basemap

1. Open SmartST Desktop if it is not already open:  
*Start → Programs → Navman → SmartST Desktop 2005 for iCN500 series.*
2. On the **Map** menu, click **Basemaps**.  
The *Navman Basemap Installer* window will open.
3. Select the Basemap to remove.
4. Click the appropriate **Remove** button to remove the Basemap from your iCN, memory card or memory card reader.

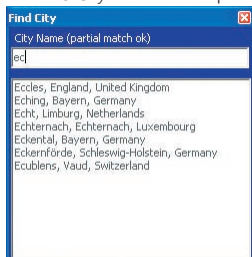
## 22. SmartST Desktop Advanced Features

This section details advanced features of SmartST Desktop. If you have not installed SmartST Desktop, see page 75.

### To Find a City or Town

1. From the **Map** menu, click **Find City**.

The *Find City* window will open.



2. Type the name of the city or town in the **City Name** field. The list of available cities will reduce to match your search.

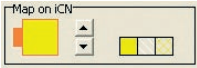



3. Double-click the name of the city or town.

The *Map Display* will rotate to centre on the selected city or town and  will mark the city or town location.

### Map Colours and Textures

To access the **Desktop Colours** section: *Desktop tab* → *Settings* → *Colours*.

Adjust the settings to change the look of the map type.

Colour Settings	Description
	Controls map colours
	Displays the: <ul style="list-style-type: none"> <li>• map border colour</li> <li>• map colour</li> <li>• map border width</li> </ul>
	Adjusts the map border width
	Controls the map display: <ul style="list-style-type: none"> <li>• solid colour</li> <li>• no colour</li> <li>• crosshatch texture</li> </ul>
<input checked="" type="checkbox"/> Show Globe Texture	Controls geographic features displayed on the map. Features are only visible if the map has no colour or crosshatch texture.



## Map Layers

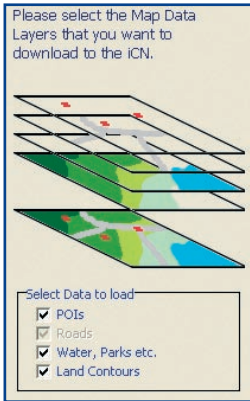
To conserve space on your iCN and memory card, you can choose map layers to install.

The layers you can choose from are:

- Points of Interest (POIs)
- Bodies of water and parks
- Land contours (topography).

To access the **Map Layers** section: *Desktop tab* → *Settings* → *Layers*.

Select or clear each checkbox to indicate the layers to install for each map.



## Points of Interest (POI) Editor

You can create custom Points of Interest (POIs) using the POI Editor in two ways:

- by creating your own POI files, or
- by using compatible POI files downloaded from the Internet.

A maximum of 25 Custom POI files can be saved on your iCN. The Custom POI files are listed on the *My POI* screen.

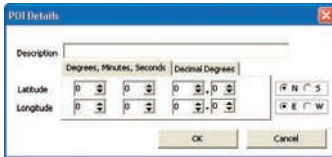
Custom POIs can be set to enable a warning chime or visual warning when in close proximity at the *Select Active POI* screen.

### Creating a Custom POI File

1. Create a new POI File using the POI Editor.
  - On the SmartST Desktop **Map** menu, click **Points of Interest**. The *POI Editor* window will open.
  - On the *POI Editor* window **File** menu, click **New Text File**. The *POI File Name* window will open.
  - Type a name for the file in the **File Name** box, then click **OK**. The file name can be up to eight characters with no spaces.

2. Add a POI to the POI File.

- On the *POI Editor* window **Edit** menu, click **New**.  
The *POI Details* window will open.



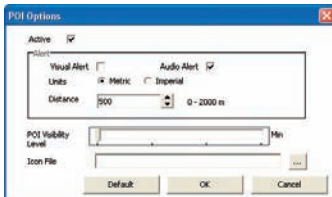
- Type a description for the POI in the **Description** box.
  - On the **Degrees, Minutes, Seconds** tab, type or select the degree, minute and second of the POI latitude in the **Latitude** boxes.
  - On the **Degrees, Minutes, Seconds** tab, type or select the degree, minute and second of the POI longitude in the **Longitude** boxes.
  - To save the POI, click **OK**.
3. Repeat step 2 until all POIs have been added to the POI file.
4. On the **File** menu, click **Save**.  
The POI file is saved.
5. Complete *Saving a Custom POI File to your iCN* below.

## Importing a Custom POI File


1. Download a POI file from the Internet and save it on your computer.
2. Open the POI file using the POI Editor
  - On the SmartST Desktop **Map** menu, click **Points of Interest**.  
The *POI Editor* window will open.
  - On the *POI Editor* window **File** menu, click **Open Text File**.  
The *Open* dialogue box will open.
  - Select the POI file from your local or network drive, then click **Open**.
3. Complete *Saving a Custom POI File to your iCN* below.

## Saving a Custom POI File to your iCN

1. On the SmartST Desktop **Map** menu, click **Points of Interest**.  
The *POI Editor* window will open.
2. On the *POI Editor* window **File** menu, click **Save to Device**.  
The *POI Options* window will open.



## 3. Modify the POI settings as required:

If you want to...	Then...
activate the POI	select the <b>Active</b> check box. <i>Note: If you do not activate the POI, you will be able to configure only the <b>POI Visibility Level</b> and <b>Icon File</b> settings.</i>
enable a visual warning when the POI is in close proximity	select the <b>Visual Alert</b> check box.
enable a warning chime when the POI is in close proximity	select the <b>Audio Alert</b> check box.
change the units used to measure distance for this POI	select the <b>Metric</b> or <b>Imperial</b> option.
select the distance from the POI at which the visual warning should display or the warning chime should sound	select the distance from the <b>Distance</b> box.
indicate the priority of this POI when one or more additional POIs are in the same locale	move the <b>POI Visibility Level</b> slider left or right.
select a custom POI type icon to display on the map (if you do not select a custom icon, a default icon will display)	Type the path to the icon file to be used to represent the POI type, in the <b>Icon File</b> box, or select the icon file from your local or network drive clicking  , locating the file and clicking <b>Open</b> . The file must be a bitmap (.bmp) graphic with a minimum of 6x6 pixels and a maximum of 32x32 pixels.

4. Click **OK** and follow the prompts.

The POI file is saved to the iCN as a Custom POI type.

- If you want to change the file name, edit the file name in the *POI File Name* window *File Name* box, then click **OK**.  
The file name can be up to eight characters and cannot contain spaces.

## Deleting a Custom POI File from your iCN

1. On the **Map** menu, click **Points of Interest**.  
The *POI Editor* window will open.
2. On the **File** menu, click **Manage POI Files**.  
The *Manage POI Files* window will open, displaying a list of custom POI files installed on your iCN.
3. Click the **File Name** or **Size** of the POI file to delete.
4. Click **Delete**.  
The file is removed from the list, but is not yet deleted.
5. To select another file to delete, go back to step 2; otherwise, proceed to step 6.
6. Click **OK** and accept the changes.  
The selected file or files are deleted.

# Backups

You can save backups of all iCN Preferences and Favourites to your computer.

## To Back up your Preferences, Favourites and My Home

1. On the SmartST Desktop **File** menu, click **Backup**.  
The *Backup* window will display.
2. Click **New Backup**.  
The *New Backup* window will display.
3. Click **OK**.  
The *New Backup* window will close. The backup will be listed on the *Backup* window.
4. Close the *Backup* window.

## To Delete a Backup

1. On the SmartST Desktop **File** menu, click **Backup**.  
The *Backup* window will display.
2. Select from the list the backup to delete.
3. Click **Delete**, then click **OK**.  
The backup is deleted.
4. Close the *Backup* window.

## To Restore a Backup

1. On the SmartST Desktop **File** menu, click **Restore**.  
The *Restore* window will display.
2. Select the backup from the list, then click **Restore**.  
The *Restore File Selection* window will display.
3. Select or clear the check boxes to indicate which part of the backup to restore.
4. Click **OK**.  
The *Restore File Selection* window will close and the backup will be restored.
5. Close the *Restore* window.

## 23. Accessories

You can purchase separately almost all items that came with your iCN, including additional mounting-kits and in-vehicle power adaptors.

The following accessories are also available for your iCN:

### mMCX External Antenna

Required for vehicles with heated windscreens or to boost GPS performance in weak signal-areas and in areas with poor or limited visibility of the open sky.

### AC Power Adaptor Kit

AC power cable with adaptor-plugs for the following regions:

- Western Europe
- United Kingdom
- Australia/New Zealand
- United States/Canada.

### Earphones

Earphones for listening to voice instructions in privacy.

### Remote Control

Button functions are the same as the iCN control buttons except that the iCN cannot be turned on using the Remote Control.

The Remote Control is supplied with the iCN 510 or 520 Premium edition.



# Appendix: Street Types

Note: Belgium and Switzerland each list street types and their abbreviations in three languages.

Country	Street Type	Abbreviation
Austria	BOULEVARD CHAUSSEE PLATZ STRASSE	BVD CH PL STR
Belgium (Dutch)	BAAN BERG DREEF LAAN MARKT PARK PLEIN SQUARE STEENWEG STRAAT	BN BG DR LN MKT PK PL SQ STWEG STR
Belgium (French)	AVENUE BOULEVARD CHAUSSEE IMPASSE MONT MONTAGNE PLACE ROUTE ROUTE NATIONAL RUE SQUARE	AVE BVD CH IMP MT MT PL RTE RN R. SQ
Belgium (German)	CHAUSSEE PLATZ STRASSE	CH PL STR
Finland	GATAN GATE GATA VÄGEN VÄG	GT GT GT V. V.
France	ALLEE AVENUE BOULEVARD CHAUSSEE DOMAINE FAUBOURG IMPASSE MONT MONTAGNE PASSAGE PLACE QUARTIER ROND-POINT ROUTE ROUTE NATIONALE RUE SQUARE TRAVERSE	ALL AVE BVD CH DOM FG IMP MT MT PAS PL QU RPT RTE RN R. SQ TRA

Country	Street Type	Abbreviation
Germany	BOULEVARD CHAUSSEE PLATZ STRASSE	BVD CH PL STR
Ireland	AVENUE BOULEVARD CENTRE CRESCENT PLACE ROAD ROUTE SQUARE STREET YARD	AVE BVD CTR CR PL RD RTE SQ ST YD
Italy	CONTRADA CORSO FRAZIONE LARGO PIAZZA PIAZZALE STRADA STATALE SUPERSTRADA VIA VIALE	C.DA C.SO FR LGO P.ZA P.LE SS SS V. VL
Luxembourg	ALLÉE AVENUE BOULEVARD CHAUSSEE DOMAINE FAUBOURG IMPASSE MONT MONTAGNE PASSAGE PLACE QUARTIER ROND-POINT ROUTE ROUTE NATIONALE RUE SQUARE TRAVERSE	ALL AVE BVD CH DOM FG IMP MT MT PAS PL QU RPT RTE RN R. SQ TRA
Netherlands	BOULEVARD DIJK DWARSSTRAAT DWARSWEG GRACHT KADE KANAAL LAAN LEANE LOANE PARK PLANTSOEN PLEIN SINGEL STRAAT STRJITTE STRAATWEG WEG	BVD DK DWSTR DWWG GR KD KAN LN LN LN PK PLNTS PLN SNGL STR STR STRWG WG

Country	Street Type	Abbreviation
Norway	GATA GATE PLASSEN VEGEN VEI	GT GT PL V. V.
Portugal	AVENIDA BAIRRO CALÇADA CAMINHO ESTRADA LARGO LARGUINHO PRAÇA QUARTO QUARTA QUINTA RUA SÃO SANTA SANTO	AVE BA CC CAM EST LGO LARG PR QT QT QU R. S. S. S.
Spain	AVENIDA CALLE CALLEJÓN CAMINO CARRETERA GLORIETA PASEO PLAZA RAMBLA RONDA	AVE C/ CJ CM CR G PO P. RBLA RD
Switzerland (German)	BOULEVARD CHAUSSEE PLATZ STRASSE	BVD CH PL STR
Switzerland (French)	AVENUE CHAUSSEE IMPASSE MONT MONTAGNE PLACE QUARTIER ROUTE ROUTE NATIONAL RUE SQUARE	AVE CH IMP MT MT PL QU RTE RN R. SQ
Switzerland (Italian)	CONTRADA CORSO FRAZIONE LARGO PIAZZA PIAZZALE VIA VIALE	C.DA C.SO FR LGO P.ZA P.LE V. VL
United Kingdom	AVENUE BOULEVARD CENTRE CRESCENT	AVE BVD CTR CR



# Support Information

## Support for Australia:

Navman Australia Pty. Ltd  
PO Box 479  
Gladesville  
NSW 2111  
Australia

pensupport.aus@navman.com  
www.navman.com

## Support for Europe:

Navman Europe Limited  
4G Gatwick House  
Peeks Brook Lane  
Horley, Surrey RH6 9ST  
United Kingdom

Support: [www.navman-europe.com/support.php](http://www.navman-europe.com/support.php)  
[www.navman-europe.com](http://www.navman-europe.com)

## Support for New Zealand:

Navman NZ Ltd  
PO Box. 68-155  
Newton  
Auckland  
New Zealand

pensupport.nz@navman.com  
www.navman.com

## Support for US and Canada:

Navman USA Limited  
27142 Burbank  
Foothill Ranch, CA 92610  
United States of America

Phone: 866-9-NAVMAN  
[support@navmanusa.com](mailto:support@navmanusa.com)  
[www.navmanusa.com](http://www.navmanusa.com)

NAVMAN DISCLAIM ALL LIABILITY FOR ANY USE OF THIS PRODUCT IN A WAY THAT MAY CAUSE ACCIDENTS, DAMAGE OR VIOLATE THE LAW.

# Compliance

This device complies with part 15 of the FCC Rules. Operation is subject to the following two conditions:

(1) This device may not cause harmful interference, and (2) this device must accept any interference received, including interference that may cause undesired operation.

# Copyright

© 2005 Navman NZ Limited. Navman is a registered trademark of Navman NZ Limited. All rights reserved.

SmartST, Drive-Away and Back-On-Track are trademarks of Navman NZ Limited. All rights reserved. Microsoft Windows 98 SE, ME, 2000 or XP SP1, Microsoft ActiveSync and Internet Explorer are registered trademarks of Microsoft Corporation. All rights reserved.

Adobe Reader is a registered trademark of Adobe Systems Incorporated. All rights reserved.

All other trademarks and registrations are the property of their respective owners.

Published in New Zealand.

MN000406B





MN000406B

## Free Manuals Download Website

<http://myh66.com>

<http://usermanuals.us>

<http://www.somanuals.com>

<http://www.4manuals.cc>

<http://www.manual-lib.com>

<http://www.404manual.com>

<http://www.luxmanual.com>

<http://aubethermostatmanual.com>

Golf course search by state

<http://golfingnear.com>

Email search by domain

<http://emailbydomain.com>

Auto manuals search

<http://auto.somanuals.com>

TV manuals search

<http://tv.somanuals.com>