

System Release Notes

Server HV8600 System Release Notes

NEC

PN: 455-01524-001

Proprietary Notice and Liability Disclaimer

The information disclosed in this document, including all designs and related materials, is the valuable property of NEC Computer Systems Division, Packard Bell NEC, Inc. (hereinafter "NECCSD") and/or its licensors. NECCSD and/or its licensors, as appropriate, reserve all patent, copyright and other proprietary rights to this document, including all design, manufacturing, reproduction, use, and sales rights thereto, except to the extent said rights are expressly granted to others.

The NECCSD product(s) discussed in this document are warranted in accordance with the terms of the Warranty Statement accompanying each product. However, actual performance of each such product is dependent upon factors such as system configuration, customer data, and operator control. Since implementation by customers of each product may vary, the suitability of specific product configurations and applications must be determined by the customer and is not warranted by NECCSD.

To allow for design and specification improvements, the information in this document is subject to change at any time, without notice. Reproduction of this document or portions thereof without prior written approval of NECCSD is prohibited.

Trademarks

All other product, brand, or trade names used in this publication are the trademarks or registered trademarks of their respective trademark owners.

Second Issue — July 1999

NEC

Copyright 1999
NEC Computer Systems Division
Packard Bell NEC, Inc.
1 Packard Bell Way
Sacramento, CA 95828-0903
All Rights Reserved

Introduction

These System Release Notes provide you with the latest up-to-date information about your system. These notes also provide additional valuable information about your server that was not included in the printed documentation.

The System Release Notes are written for knowledgeable users, trained customer engineers, system analysts, service center personnel, and dealers.

Please read these System Release Notes in their entirety before starting.

CONTENTS

General Notes

General Comments

Advisories

System Start-Up	3
Memory Test Acceleration	3
Power Button Override	3
Setting Up the Software	4
Setting Up Windows NT Enterprise Edition	4
HAL Installation	13
Registry Update	13
System Hardware	13
Interlocks	13
Processor Serial Number	13
Hot Plug PCI	14
ExpressBuilder	14
Documentation Errata	
Errata to Express5800 HV8600 User's Guide	15

General Notes

These Release Notes about the server system cover the following topics:

- General Comments
- Advisories
- Documentation Errata.

General Comments

The following general comments apply to this server system:

- Version of the Network Operating System tested and recommended is:
Windows NT[®] 4.0 Server Enterprise Edition with Service Pack 4

Advisories

This section contains advisories on System Start-Up, Setting Up the Software, System Hardware, and EXPRESSBUILDER.

System Start-UP

When turning on your system for the first time, you must prepare the system for use. When the system is turned on or restarted a short program in ROM starts the process of loading programs into memory and then executing these programs. These start-up programs perform diagnostic tests that check major hardware components, such as memory and interface circuits. It compares the hardware it finds with parameters last saved by the Setup utility. This process is the Power-On Self-Test (POST).

Memory Test Acceleration

To accelerate the memory test during POST press **Ctrl+Alt+T**.

Power Button Override

The system power button does not respond immediately during certain phases in POST. However, the power button will respond if it is held down for at least 4 seconds. The system should power down on the 5th second.

Setting UP the Software

Software setup for the most part is automatic (approximately 15 minutes) and requires only that you enter name and organization, registration information, internet address, and server parameters. The setup procedures are designed to get your server up and running as quickly as possible. The software is autoloading, requiring minimal intervention on your part. The following sections include the procedures for setting up your server with Windows NT Enterprise Edition.


Setting Up Windows NT Enterprise Edition

The Windows NT software is preloaded on your server and is ready for setup.

The Windows NT setup procedures are as follows:

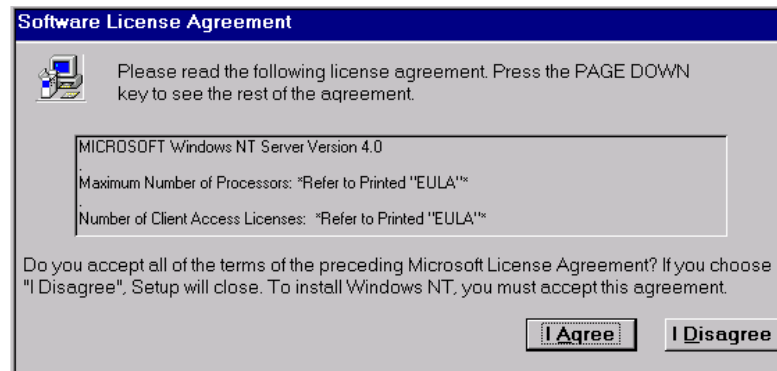
Before beginning these procedures, there is certain requested information that you will need in order to successfully complete setup. This requested information can be recorded in advance on the following "Getting Started Worksheet" for use during setup.

Item	Information Required	Enter Your Information Here
1	Name of NT Server Administrator	
2	Organization Name the server will be licensed to	
3	OEM License number for MS NT Server Software Found on the Certificate of License in the documentation pack included with your server	
4	Name that you assign to the server	
5	IP address assigned to the server's Ethernet Interface Card	
6	Subnet Mask for the server's Ethernet Interface Card	
7	Default Gateway IP address for server's Ethernet Interface Card	
8	IP address of DNS system to be used with the server. (If you have a DNS system within your local area or wide area network, you may want to use that system.)	
9	If you use WINS in your current network, you need the Primary and Secondary WINS IP addresses.	

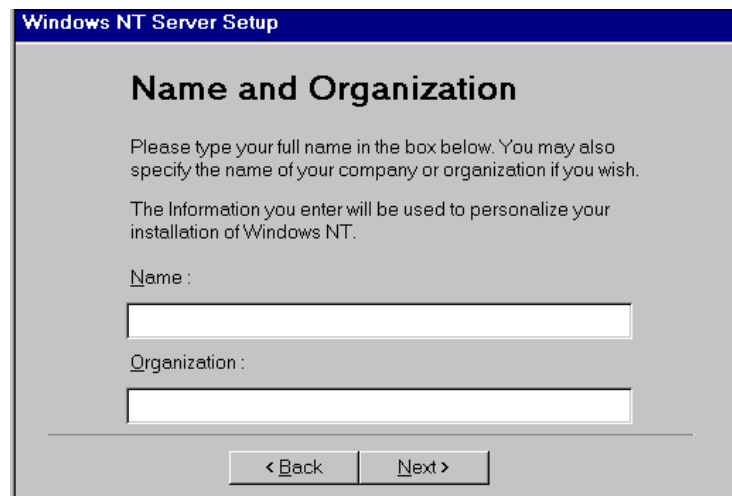
 **Note:** If you make a mistake during these setup procedures and you can't return to a previous selection, you must reboot the server immediately.

1. Power up your server (see your Server's "Getting Started" sheet for procedures).
2. The "Windows NT 4.0 Server" screen with Packard Bell NEC in the upper left-hand side of the screen is displayed. A "Windows NT Setup: setup is initializing." message momentarily appears on the screen.

3. At the Microsoft “Software License Agreement” dialog box, read and accept the Microsoft license agreement by clicking **I Agree**.



4. At the “Name and Organization” dialog box, enter your name and organization. Click **Next** when done.




5. At the “Registration” dialog box, enter the MS Windows NT License Number. The number is found on the Certificate of Authenticity. Click **Next** when done.



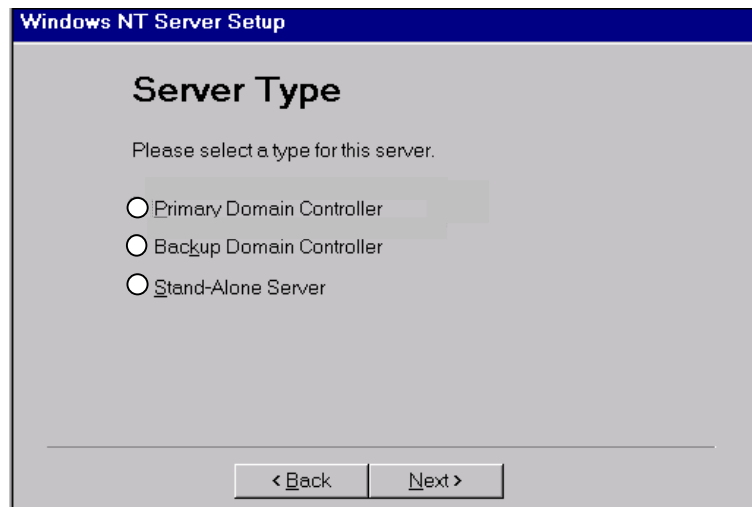
-
6. At the “Computer Name” dialog box, enter the server name that is to be used with this server. Click **Next** when done.



The screenshot shows the 'Windows NT Server Setup' dialog box with the title 'Computer Name'. The text inside reads: 'Windows NT needs a Computer Name to identify your computer. Please enter a name of 15 characters or less.' Below this is a note: 'NOTE: You ensure that the name you enter is unique on your network. Ask your network administrator if you are not sure what name you should enter.' A text input field labeled 'Name:' is present. At the bottom, there are two buttons: '< Back' and 'Next >'.

 **Note:** Once you select the server type and click **Next** in step 7, you cannot change the server type.

7. At the “Server Type” dialog box, select one of the following: **Primary Domain Controller**, **Backup Domain Controller**, or **Stand-Alone Server**. Click **Next** after selecting the server type.

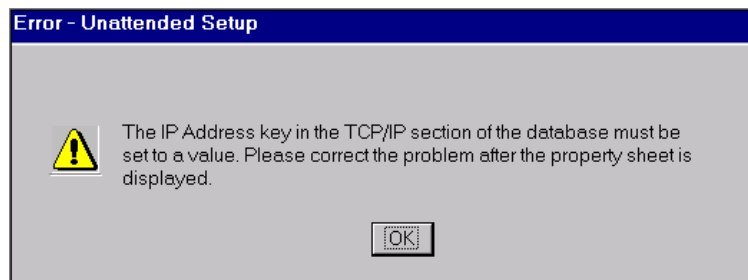


The screenshot shows the 'Windows NT Server Setup' dialog box with the title 'Server Type'. The text inside reads: 'Please select a type for this server.' Below this are three radio button options: 'Primary Domain Controller', 'Backup Domain Controller', and 'Stand-Alone Server'. At the bottom, there are two buttons: '< Back' and 'Next >'.

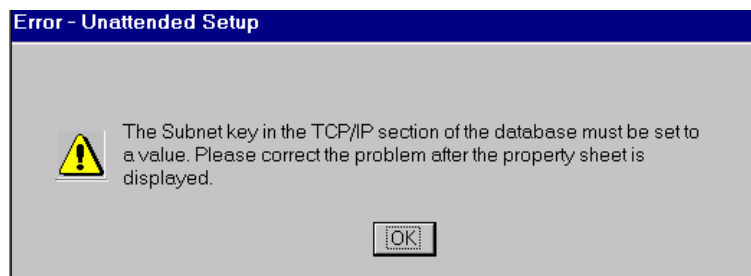
-
8. At the “Windows NT Setup” dialog box, click **Next** to start installation of Windows NT Networking.



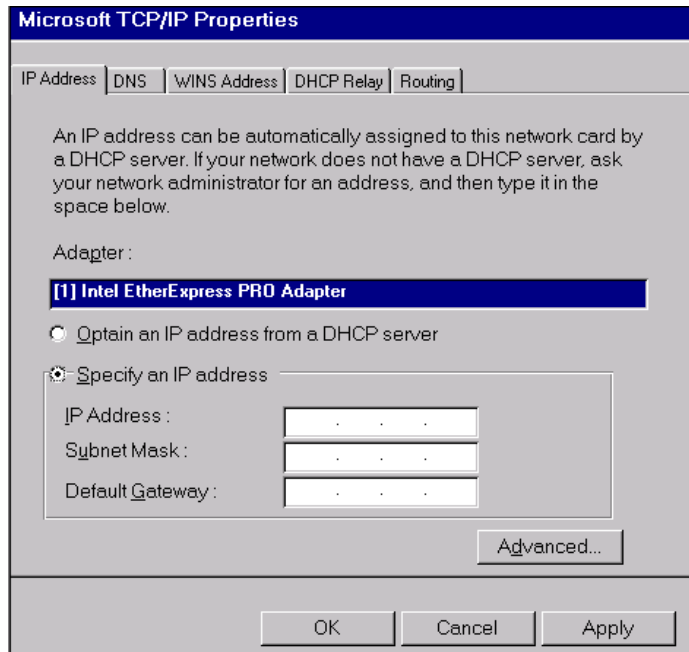
9. You'll receive two error messages from “Unattended Setup.”
- Click **OK** at the “Error - Unattended Setup” dialog box. You'll enter the IP address information in step 10.



- Click **OK** at the “Error - Unattended Setup” dialog box.” You'll enter the Subnet information in step 10.

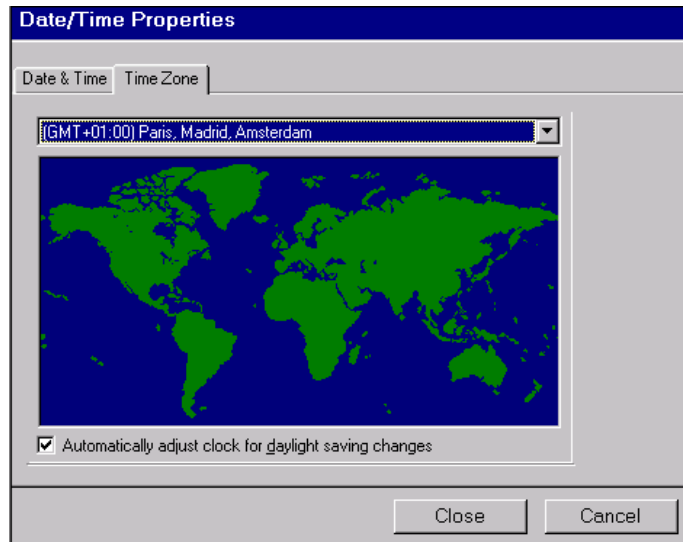


-
10. At the “Microsoft TCP/IP Properties” dialog box, enter the IP address and the Subnet Mask value of the Server’s Ethernet interface card.




- Enter the static **IP address** of your Ethernet adapter in the “IP Address:” field.
- Enter your mask value in the “Subnet Mask” field.
- Enter the default gateway value.
- If you have a DNS server(s), define the local DNS address now by selecting the “DNS” tab and entering the IP address(es) of your DNS domain(s) in the appropriate field(s).
- Select the “WINS Address” tab. Disable “DNS for WINS resolution” and “LM Hosts Lookup.”
- If you use WINS in your wide area or local area network, you should specify the IP address(es) of your WINS server(s).
- When done, click **Apply** and click **OK**.

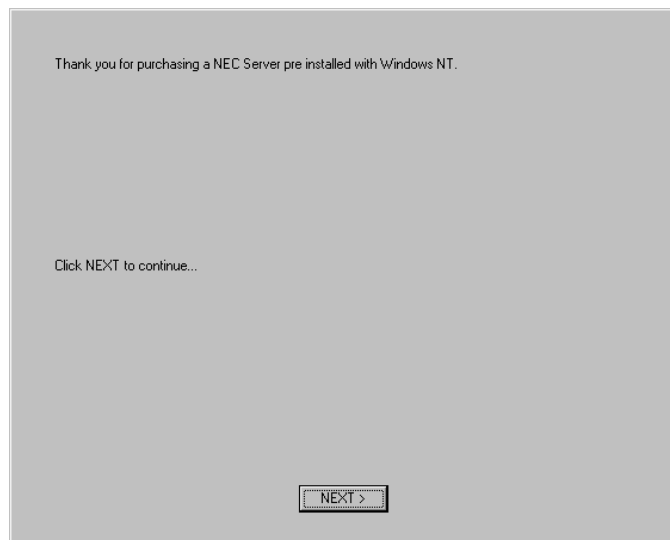
-
11. At the “Date/Time Properties” screen, select the proper time zone and confirm/correct the proper date and time. Click **Close** when done.



- This portion of the installation installs files, performs some processing, and takes several minutes.

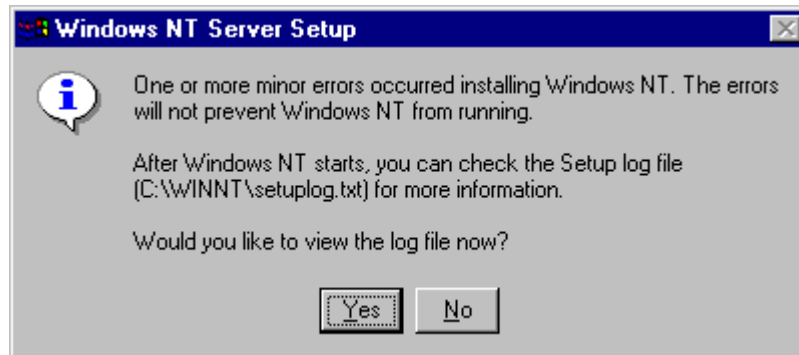
 **Note:** Please read the “Thank you for purchasing a NEC server preinstalled with Windows NT” screen. Note any recommendations that may apply to your specific installation for additional configuration considerations.

- At the "Thank you for purchasing a NEC server pre installed with Windows NT” screen, click Next to continue...




- NT Setup sets security on system files and continues to process the installation.

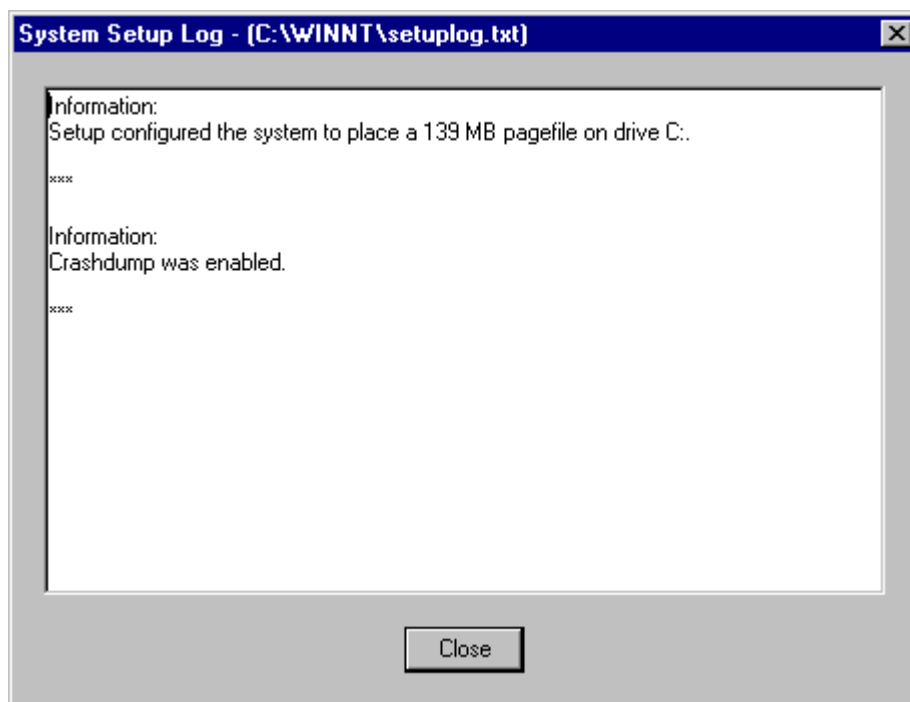
-
12. At the "Windows NT Server Setup" dialog box, click "YES" to view the log file. This screen is for information only and always appears even if no errors occur, so that the log file can be viewed. The log file shows the current size of the Pagefile.



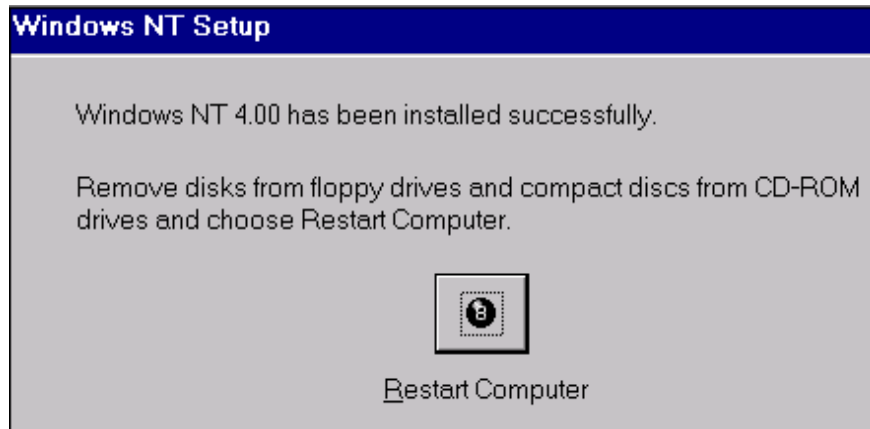
13. The "System Setup Log - (C:\WINNT\Setuplog.txt)" dialog box opens. The amount of information in this dialog box will vary depending on your system. In this dialog box you can view the current size of the Pagefile. The size of the Pagefile, which is a virtual memory file, varies according to the amount of physical memory configured in your system.

The "C:\WINNT\setuplog.txt" file is where the Windows NT software failures are stored.

 **Note:** After the initial software setup it is recommended that you change the size of the Pagefile specifically for your system.




-
14. At the “Windows NT Setup” dialog box showing that “Windows NT 4.00 has been installed successfully,” click **Restart Computer**.



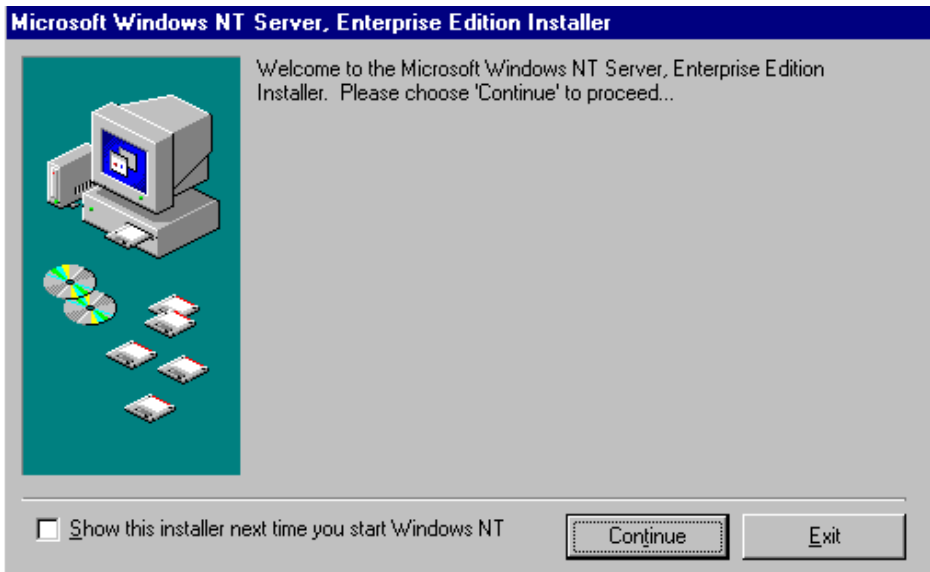
- After about 30 seconds, the system automatically loads Windows NT Server.
- You now have the following applications installed on your server:
 - Windows NT Server 4.0 with any updated storage, network, and video drivers required for this server system
 - Windows NT Service Pack 4
 - Microsoft IE 4.01.

15. Press **Ctrl Alt Del** to log on to Windows NT Server.

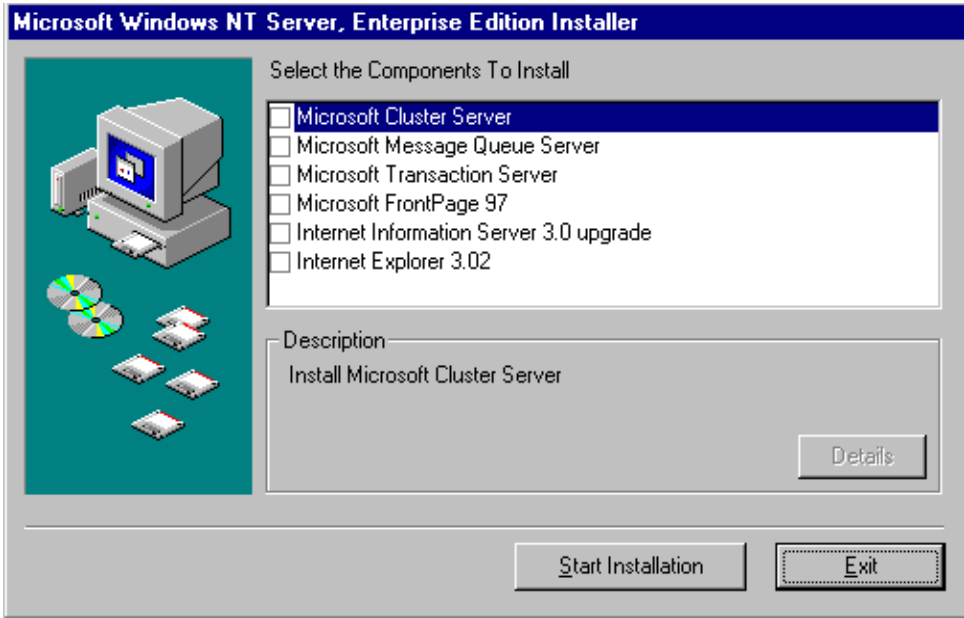
- At the Log On Window, press **Enter** to log on as the Administrator. The Windows NT desktop opens.

 **Note:** At this point there is no Administrator password set on your system. Following completion of the installation process, refer to the Microsoft Windows NT Servers Books Online for information on adding/changing passwords. Books Online are on your Windows NT Server CD.

- At the "Welcome to the Microsoft Windows NT Server, Enterprise Edition Installer" dialog box, select "Continue" or "Exit" as follows:
 - Click "Continue" to allow optional Windows NT Enterprise Edition components to be selected.
 - Click "Exit" to return to the Windows NT desktop screen.



- At the "Select the Components To Install" dialog box, select the optional Windows NT Enterprise Edition components you want to be installed, then select " Start Installation." Otherwise, "Exit".
 - Click on "Start Installation" to install the optional Windows NT Enterprise Edition components selected.
 - Click on "Exit" to return to the Windows NT desktop screen.



HAL Installation

When installing Windows NT on the HV8600 system, it is necessary to use the HAL software included with your system.

Please refer to the NOS Guide included in your EXPRESSBUILDER CD for installation instructions.

Registry Update

When installing Windows NT on the HV8600 system, it is necessary to update the Windows NT registry using the Registry Update diskette included with the EXPRESSBUILDER CD provided with your system.

Please refer to the NOS Configuration Guide included in your EXPRESSBUILDER CD for installation instructions.

System Hardware

Interlocks

The top and side panels of your system have interlocks. Removal of these panels while the system is running results in DC power being cut off to the system. It is strongly recommended that the system be fully shutdown and AC cables removed prior to servicing the system.

Processor Serial Number

The Intel® Pentium® III Xeon™ processor has a new feature called the "Processor Serial Number." This feature is disabled by default in your system BIOS. In order to turn on this feature, enter the BIOS Setup Utility by pressing **F2** during POST, the Main Menu is displayed. At the top of the Main Menu select "Advanced Menu." Under "BIOS Setup Configuration, Advanced, Security, and System Hardware" find item "Processor Serial Number" and change the default from Disable to Enable.

Please refer to "Configuring Your System" in your User's Guide, included in your EXPRESSBUILDER CD for detailed procedures on how to enable the "Processor Serial Number."

Hot Plug PCI

The Hot Plug PCI feature of the HV8600 is active only when an operating system that includes Hot Plug PCI support is available.

When the Hot Plug PCI feature is not active:

- Do not attempt to replace PCI option cards while the system is running.
- The Hot Plug PCI access door is secured preventing access to the Hot Plug PCI option board area.
- The system must be powered-off in order to replace PCI option cards. In order to access the Hot Plug PCI option board area the entire top panel must be removed.

ExpressBuilder

The following advisory applies when using EXPRESSBUILDER version 2.5.

- If you already have an operating system installed when creating a maintenance partition, EXPRESSBUILDER will warn you of the existing partition. If you want to preserve the installed operating system, do not create the maintenance partition or the existing operating system will be overlaid by the maintenance partition.

Documentation Errata

Please note the following changes to the *Express5800 HV8600 User's Guide*.

Errata to Express5800 HV8600 User's Guide

The following changes apply to the *Express5800 HV8600 User's Guide* (456-01505-000).

Page 3-7 Table 3-1 BIOS Setup Configurations, Advanced Menu. Under column heading "Normal Setting or Display Only" for "DIMM Error Pause" change the word "Enabled" to "Disabled".

Page 3-8 Table 3-1 BIOS Setup Configurations, Advanced Menu. Under column heading "Menu Parameter Name" delete "L3 Cache Error Pause" and under column heading "Normal Setting or Display Only" delete "Enabled".

Page 3-8 Table 3-1 BIOS Setup Configurations, Advanced Menu. Under column heading "Normal Setting or Display Only" for "Parallel Mode:" change the word "ECP" to "Bi-Directional".

Page 3-8 Table 3-1 BIOS Setup Configurations, Advanced Menu. Under column heading "Menu Parameter Name" delete "DMA Channel:" and under column heading "Normal Setting or Display Only" delete "DMA 3".

Page 3-9 Table 3-1 BIOS Setup Configurations, Advanced, Security, and System Hardware Menus. Under column heading "Normal Setting or Display Only" for "PCI Bus#1 Parity Error, PCI Bus#2 Parity Error, and PCI Bus#3 Parity Error" change the words "Disabled" to "Enabled".

Page 3-9 Table 3-1 BIOS Setup Configurations, Advanced, Security, and System Hardware Menus. Under column heading "Normal Setting or Display Only" for "Numlock" change the word "Auto" to "On".

Page 3-10 Table 3-1 BIOS Setup Configurations, System Hardware Menu and Boot Menu. Under column heading "Normal Setting or Display Only" for "Upper Limit" change the number "53" to "45".

Page 3-10 Table 3-1 BIOS Setup Configurations, System Hardware Menu and Boot Menu. Under column heading "Normal Setting or Display Only" for "Lower Limit" change the number "5" to "4".

Free Manuals Download Website

<http://myh66.com>

<http://usermanuals.us>

<http://www.somanuals.com>

<http://www.4manuals.cc>

<http://www.manual-lib.com>

<http://www.404manual.com>

<http://www.luxmanual.com>

<http://aubethermostatmanual.com>

Golf course search by state

<http://golfingnear.com>

Email search by domain

<http://emailbydomain.com>

Auto manuals search

<http://auto.somanuals.com>

TV manuals search

<http://tv.somanuals.com>