



NETGEAR®

802.11b Wireless USB Adapter
2.4 GHz MA111



User's Guide

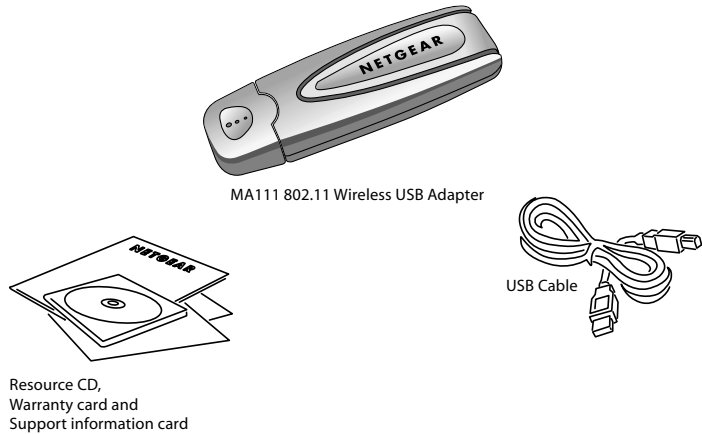
Introduction

Congratulations on your purchase of **NETGEAR MA111 802.11b Wireless USB Adapter**. With this USB adapter you will get ultimate mobility at home, in your office, or while you are traveling, and it frees you from traditional Ethernet wiring.

This installation guide shows you how to connect the USB adapter and configure it with your access point. Setup is easy – follow the instruction in this guide and your system will be up and running quickly.

Package Contents

The product package should contain:



- MA111 802.11b Wireless USB Adapter
- USB Cable
- GearBox™ CD for Wireless USB Adapter
- User's guide
- Warranty card
- Support information card

System Requirements

Before installing the MA111 802.11b Wireless USB Adapter, please make sure that your computer system has the following:

- A computer with a USB 1.1/2.0 port. A USB port allows a user to use the same device for either their desktop or laptop
- Windows® 98/ME/2000/XP (be sure to have the Windows Installation CD-ROM ready for use during installation).
- At least 5 Megabytes disk space for installing the driver and utility programs.

LED Indicators

The green LED on the MA111 802.11b Wireless USB Adapter indicates the wireless link condition of the station with another wireless node or the associated Access Point.

LED Activity	Meaning of LED Activity
Steady Green	The MA111 has a connection with an access point or another 802.11b device.
Blinking	The MA111 is trying to establish a connection. If it keeps blinking for a while, check your configuration, or try moving to a different location where the wireless signal quality is better.

1 Installing the MA111 Wireless USB Adapter

Important Note: You must first install the software before you plug the USB Adapter into your computer!

Follow these steps to install the MA111 802.11b Wireless USB Adapter.

Install the MA111 Driver and Utility Software

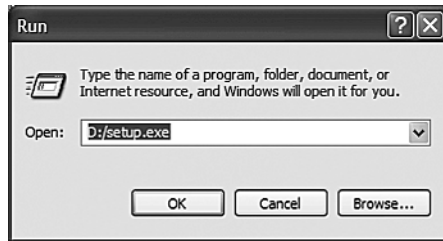
1. Turn on your computer.
2. Insert the *GearBox for Wireless USB Adapter CD* into the CD-ROM drive.

3. The Autostart Wizard screen will appear, as shown here:

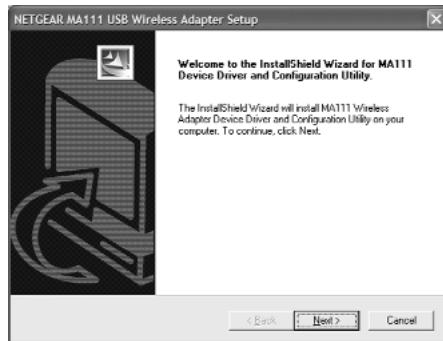


4. Click the **Install Driver & Utility** option.

5. If the Autorun wizard does not automatically start, go to your Windows Start menu and choose **Run**, and type **D:/Setup.exe** ("D" represents your CD-ROM drive letter), and click **OK**.

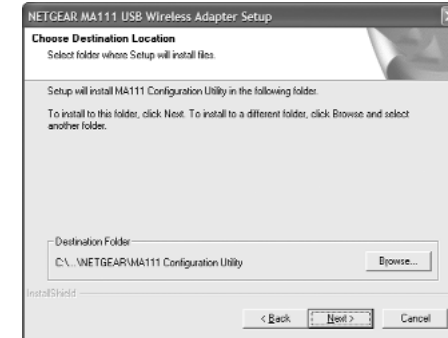


6. The InstallShield Wizard screen will appear.



7. Click **Next** to continue.

8. The Choose Destination Location screen will display the default Destination Folder. If you want to change the default folder, click **Browse** and choose a different destination folder.



9. Then, click **Next** to continue to the next screen.

10. Modify the Program Folders field, if desired. Click **Next** to continue. Install Shield will start copying files onto your system.

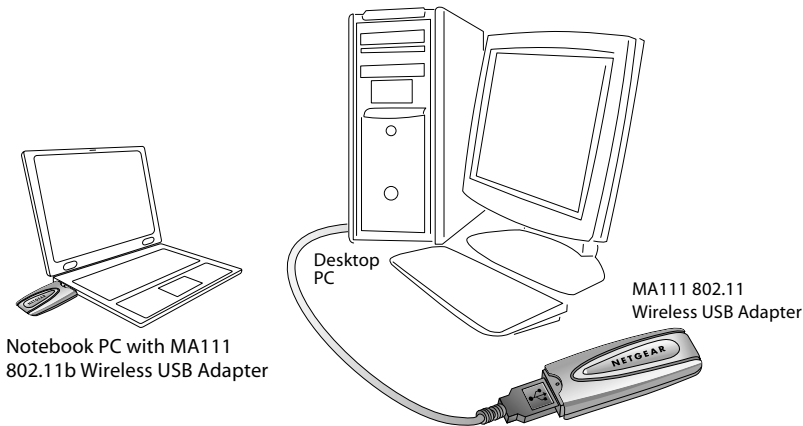


11. Click **Finish** to complete installing the Configuration Utility.



Install the MA111 Wireless USB Adapter

1. Insert the **MA111 802.11b Wireless USB Adapter** into the USB port on your computer as shown here.



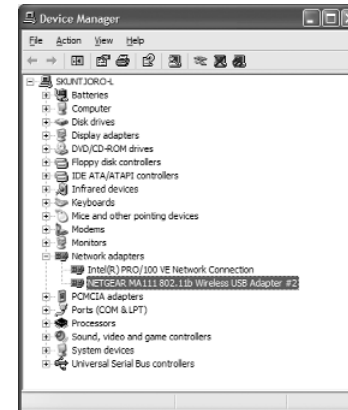
2. Windows will automatically detect the MA111 802.11b Wireless USB Adapter and the Found New Hardware Wizard dialog box will appear.
3. Follow the on-screen instructions to install the driver for the MA111 802.11b Wireless USB Adapter.
 - For *Windows 98/ME users*, once the [Please insert the disk labeled “Windows 98/ME CD-ROM,” and then click **OK**] window appears, enter the path corresponding to the appropriate drives and click **OK**. Usually these files can be found at **C:\Windows** or **C:\Windows\System**.
 - For *Windows 2000 users*, a Digital Signature Not Found message may appear. Click **Yes** to proceed.
 - For *Windows XP users*, a Windows Logo Testing Not Found dialog box may appear. Click **Continue Anyway** to proceed.
4. Click **Finish** to complete the installation.

Verify the Driver Installation

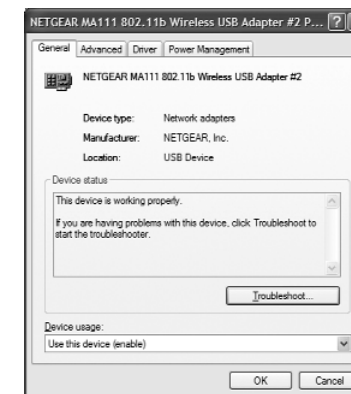
It is a good idea to confirm that the MA111 802.11b Wireless USB Adapter has been properly installed. Follow the instructions that apply to your computer system:

1. From the Windows desktop, right-click **My Computer**.

2. Click **Properties**.
3. Open **Device Manager**:
 - *Windows 98/ME users* – Select the **Device Manager** folder tab.
 - *Windows 2000/XP users* – Select the **Hardware** folder tab, and click on the **Device Manager** button.
4. Double-click **Network Adapters**. There should be no yellow exclamation mark or red cross icon on the **NETGEAR MA111 802.11b Wireless USB Adapter** selection, as shown here.



5. Double-click **NETGEAR MA111 802.11b Wireless USB Adapter**. On the **General** folder tab, the **Device Status** window should indicate that the device is working properly, as shown here:



The installation of the MA111 Wireless USB Adapter driver is complete.

2 Configuring the MA111 Wireless USB Adapter

NETGEAR's wireless Configuration Utility program will help you learn more about your wireless network, so that you can customize it to better suit your networking needs. The Configuration Utility program will provide information about signal quality and link conditions and let you modify various configurable wireless parameters.

Now that the MA111 802.11b Wireless Adapter has been installed, you can use the **MA111 802.11b Configuration Utility** to view and customize configuration settings and features.

To display the MA111 Configuration Utility:

- Open the **NETGEAR MA111 Adapter** programs group or double-click the **MA111 icon** that appears in the Windows System Tray, as shown here:



MA111 Wireless Adapter SysTray icon

To view or change your configuration settings:

If you are using Windows 98/ME/2000, turn to page 12.

If you are using Windows XP, turn to page 9.

About the MA111 SysTray Application

The SysTray (System Tray) resides on one end of the taskbar in the Microsoft Windows Desktop. It displays interface icons for memory-resident applications that execute continuously in the background, such as the clock, speaker volume, and virus detection.

Once you have completed the utility installation, the Windows SysTray will show the icon in different colors, as described here:

Color	Ad-Hoc Mode	Infrastructure Mode
Red	The Wireless PC Card has not initiated communication with any other wireless node.	Either the Wireless Adapter is not able to link to any Access Point, or the link between the Wireless Adapter and the Access Point is lost.
Yellow	N/A	The link condition between the Wireless PC Card and the associated Access Point is weak.
Green	The Wireless PC Card has communicated successfully with another wireless node.	The Wireless Adapter has established good communication with an Access Point and the signal is strong.

Double-click the **Wireless Adapter SysTray** icon to activate the wireless Configuration Utility for the MA111 Wireless USB Adapter. You can click any of the folder tabs in the NETGEAR MA111 USB Adapter Utility dialog box to view the current status or modify operational parameters.

For detailed information on wireless networking, refer to *Wireless Network Fundamentals*, on page 18.

The MA111 Configuration Utility contains seven sections:

1. **Status**
2. **Configuration**
3. **Security**
4. **Profile**
5. **Site Survey**
6. **Statistics**
7. **About**

Note: The above sections are always available by clicking on the tab at the top of the Configuration Utility window.

Configuration Note for Windows XP Users

By default, Windows XP uses its own utility to configure your wireless network settings, however, in order to take advantage of the MA111 features and functions, we recommend that you use the NETGEAR MA111 USB Adapter Utility program.

To disable Windows XP configuration utility and use the **NETGEAR MA111 USB Adapter Utility**, please follow these steps:

1. After installing the MA111 Wireless USB Adapter, Windows XP will display a **Wireless Network Connection #** message, similar to the one shown here:



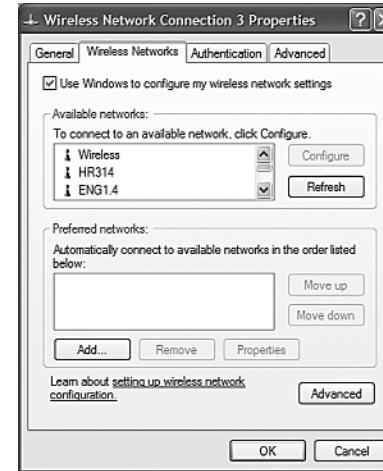
Click anywhere on the message or on the icon.

2. The Windows XP Wireless Network Configuration window will be displayed and look similar to this:



Click the **Advanced** button.

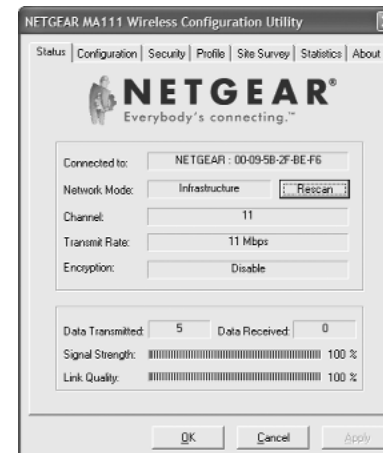
3. The Wireless Networks Advanced Configuration window will be displayed.



4. Uncheck the option "Use Windows to configure my wireless network settings."
5. Click **OK** to save your changes.

Status Section

The Status section of the NETGEAR MA111 USB Adapter Utility dialog box shows the current wireless LAN connection status, statistics of data transmitted and received, signal strength, etc., as shown here.

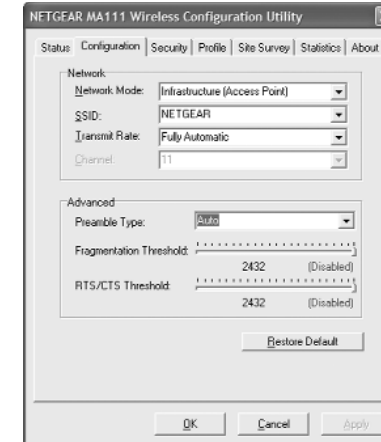


This table describes the information shown in the Status section of the dialog box:

Status	Description
Connected to	Indicates the SSID and MAC address of the associated Access Point when the MA111 802.11b Wireless USB Adapter is configured in Infrastructure mode.
Network mode	Indicates the network mode of the MA111 802.11b Wireless USB Adapter (Infrastructure or 802.11 Ad-Hoc).
Channel/frequency	Indicates the wireless channel currently in use.
Transmit Rate	Indicates the data transfer rate between the wireless node and the device to which it is communicating.
Receive Rate	Indicates the data receive rate between the wireless node and the device to which it is communicating.
Encryption	Indicates whether the encryption of this device is enabled (on) or disabled (off).
Data Transmitted/Received	Indicates the number of successfully Transmitted and Received packets.
Signal Strength	Indicates the signal strength of the radio frequency signal received by this wireless node.
Link Quality	Indicates how well that the wireless node is communication with the associated access point or another wireless node.

Configuration Section

The **Configuration** section shows you the configuration parameters of the wireless LAN and allows you to modify them.

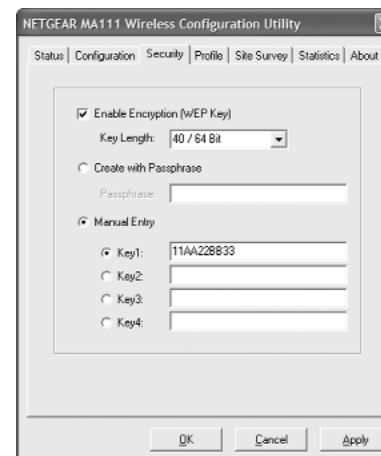


This table describes the options available from the Configuration section:

Configuration	Description
Network mode	Configurable between 802.11 Ad-Hoc and Infrastructure modes. In 802.11 Ad-Hoc mode, the wireless nodes form their own local network where the end nodes communicate peer-to-peer without an Access Point. In Infrastructure mode, the wireless searches all available wireless channels to associate with an Access Point.
Network Name (SSID)	Enter a 32-character (maximum) Service Set ID in this field; the characters are case sensitive. When the wireless node is operating in Ad-hoc mode, this field operates as the Basic Service Set ID (BSSID). All wireless nodes in the same network should use the same BSSID. When in Infrastructure mode, this field defines the Extended Service Set ID (ESSID). The ESSID assigned to the wireless node is required to match the Access Point ESSID in order for them to communicate.
Transmit Rate	The Transmit Rate field allows to define the data transfer rate. The default value is Fully Automatic. In this case, the best transfer rate is negotiated between this wireless node and access point or another wireless node that it is communicating with. Other option values for this field are 1 Mbps, 2 Mbps, Auto 1 or 2 Mbps, 5.5 Mbps, and 11 Mbps.
Channel	Specifies a channel only when using an Ad-hoc network mode.
Preamble Type	A long transmit preamble allows the receiver (MA111 Wireless USB Adapter) to lock into the received bit patterns more easily. A short transmit preamble provides better performance. Default: Auto (long & short).
Fragmentation Threshold	This is the packet length used for fragmentation. Packets larger than the size programmed in this field will be fragmented. The Fragmentation Threshold value must be larger than RTS Threshold value. The default value for Fragmentation Threshold is 2432.
RTS/CTS Threshold	The packet size that the wireless node uses to determine if it should use the CSMA/CD mechanism or the CSMA/CA mechanism for packet transmission. With the CSMA/CD transmission mechanism, the transmitting station sends out the actual packet as soon as it has waited for the silence period. With the CSMA/CA transmission mechanism, the transmitting station sends out a RTS packet to the receiving station, waits for the receiving station to send back a CTS packet before sending the actual packet data. The default value for RTS Threshold is 2432.

Security Section

To prevent unauthorized wireless stations from accessing data transmitted over the network, the **Security** section of the Configuration Utility offers secure data encryption, known as **WEP**, to better protect your data transmissions.



To activate the WEP Encryption, make sure the **Enable Encryption (WEP Key)** box displays a checkmark (as shown above).

WEP Encryption options will be displayed, as shown on the previous page. You may make changes, as detailed here:

1. Select one of the two options: **Create with Passphrase** or **Manual Entry**. A Passphrase makes you easier to enable WEP because it automatically generates the WEP hexadecimal numbers for the key. If the wireless network Access Point uses a Passphrase, you can also use that here. Otherwise, you will have to manually enter the hexadecimal numbers.
2. **Create with Passphrase** option: pull down the **Key Length** options and select the 64-bit or 128-bit, then type in your Passphrase.
3. **Manual Entry** option:
 - Pull down the **Key Length** options and select the **64-bit** or **128-bit**, encryption method.
 - In the **Encryption Keys** fields, specify the WEP keys:

For 64-bit encryption:

Hexadecimal: 10 hexadecimal digits in the range of “A-F”, “a-f” and “0-9” (e.g. 11AA22BB33)

For 128-bit encryption:

Hexadecimal: 26 hexadecimal digits in the range of “A-F”, “a-f” and “0-9” (e.g. 00112233445566778899AABBCC).

4. When you are done, click the **Apply** button and click **OK** for the changes to take effect.

Important Note: The WEP keys must be set up exactly the same on all wireless devices in order to communicate with each other.

This table describes the options available from the Security section:

Security	Description
Enable WEP Encryption	Enables the data encryption for the wireless node. If you disable the data encryption (by unchecking the box) then no encryption method will be used; this is also called Open System data encryption. To enable encryption is to use the Shared Key data encryption method.
Create with Passphrase	A Passphrase is use to automatically generate the WEP hexadecimal numbers for the key. If your wireless network Access Point uses a Passphrase, you can use that here. Once you type in the Passphrase, the generated key will be shown before you click OK or Apply button.
Manual Entry	The WEP hexadecimal numbers are needed if a Passphrase is not used in the wireless Access Point but rather if the key is manually entered.
Key Length	The key length must be the same between all wireless nodes and Access Points in the same network. The possible values for the data encryption level are 64-bit and 128-bit. The 64-bit data encryption is also called 40-bit data encryption by some vendors.
Key1 Key2 Key3 Key4	The MA111 device uses a selected WEP key to encrypt and decrypt information. When set to 64-bit (also called 40-bit), or 128-bit data encryption mode, you may specify up to four different keys to encrypt wireless data. Select one of the keys as a default key.

Profile Section

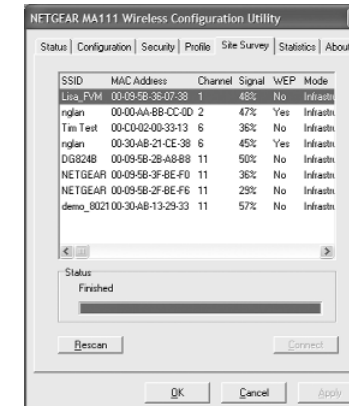
The Profile area allows you to set values for all parameters by selecting a previously defined profile.



To create a profile, in the Profile Name field, type a **Profile Name**; for example: Home, Office. When you are done, click the **Save** button in the Profile area, and click **Apply**. If one of the profiles is no longer used, display the name in the Profile Name field, then choose **Delete**. You can add and modify multiple profiles at any time.

Stations Section

The Stations section displays all of the Access Points and the Ad Hoc Stations that are available.

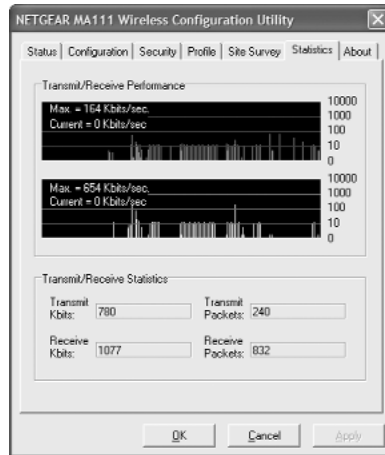


To display Access Points around the working environment, select the **Re-Scan** button. In addition to showing the MAC Address of each Access Point, you can also view the Channel, Signal, Security, and Network Modes.

Click **OK** to continue, or select another tab.

Statistics Section

The **Statistics** section of the Configuration Utility dialog box indicates the real-time Transmit and Receive packets performance in graph form and also displays the performance statistics in figures.



Click **OK** to continue or select another tab.

This table describes the options available from the Statistics section:

Statistics	Description
Transmit/Receive Performance	Displays the maximum and current Tx/Rx (Kbits/sec) performance statistics.
Transmit/Receive Statistics	Monitors the Tx/Rx of the Kbits or packet statistics.

About Section

The **About** section of the Configuration Utility dialog box shows the regulatory domain: FCC for US, ETSI for Europe, MKK for Japan; the MAC address and the release information of both the device driver for the Wireless Adapter and the Wireless Configuration Utility software.



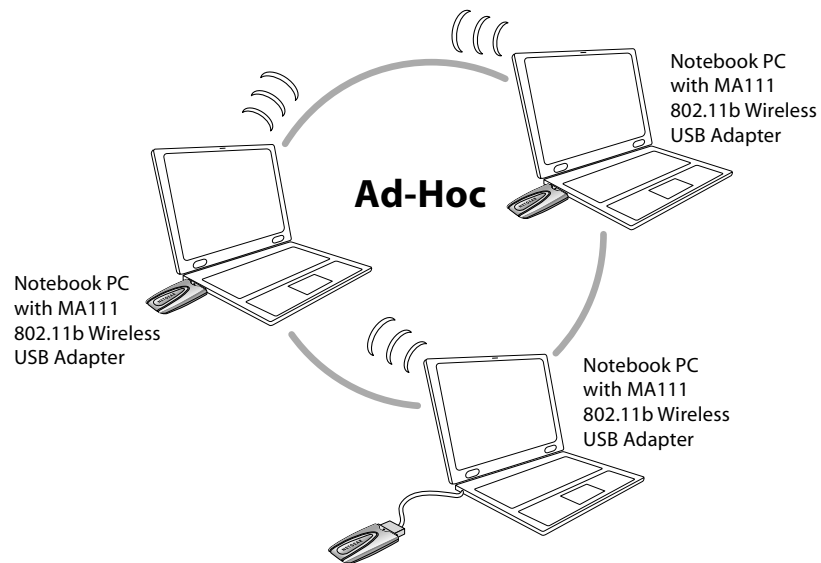
Click **OK** to continue, or select another tab.

3 Wireless Network Fundamentals

Wireless Network Configuration

Ad-Hoc Mode (Peer-to-Peer Workgroup)

The Institute of Electrical and Electronics Engineers (IEEE) standard for wireless LANs (WLANs), 802.11 offers two methods for configuring a wireless network — Ad-Hoc and infrastructure. In an Ad-Hoc network, computers are brought together as needed; thus, there is no structure or fixed points to the network — each node can generally communicate with any other node. There is no Access Point involved in this configuration. It enables you to quickly set up a small wireless workgroup and allows workgroup members to exchange data or share printers as supported by Microsoft Networking in the various Windows operating systems. Some vendors also refer to ad-hoc networking as peer-to-peer workgroup networking.



In this configuration, network packets are directly sent and received by the intended transmitting and receiving stations. As long as the stations are within range of one another, this is the easiest and least expensive way to set up a wireless network.

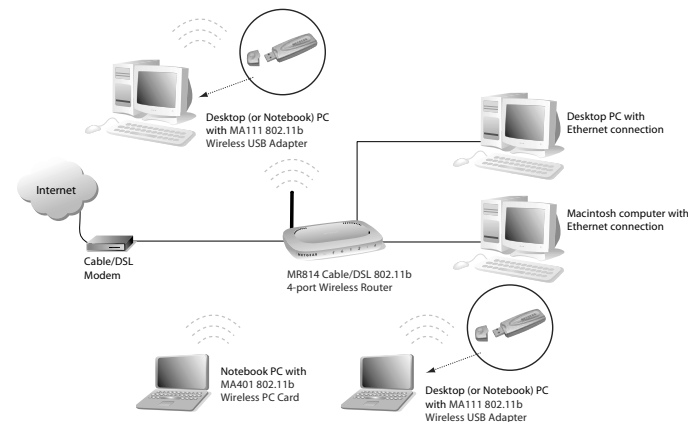
To set up an Ad-Hoc workgroup operating with standard protocols, do the following:

- Set all stations to connect in Ad-Hoc mode (or Peer-to-Peer workgroup mode).
- Set all stations to use the same network name (or SSID).
- Set all stations to use the same wireless channel for communication.
- Set all stations to disable the WEP encryption key, or set all stations to use an identical WEP encryption key.

Infrastructure Mode

With a wireless Access Point, you can put the wireless LAN into Infrastructure mode. It provides wireless connectivity to multiple wireless network devices within a fixed range or area of coverage, interacting with a wireless node via an antenna.

In the Infrastructure mode, the wireless Access Point converts airwave data into wired Ethernet data, acting as a bridge between the wired LAN and wireless clients. Connecting multiple Access Points via a wired Ethernet backbone can further extend the wireless network coverage. As a mobile computing device moves out of the range of one Access Point, it moves into the range of another. As a result, wireless clients can freely roam from one Access Point domain to another and still maintain seamless network connection.



To set up an Infrastructure network operating with standard protocols, do the following:

- Set all wireless stations to connect in Infrastructure mode.
- Set all stations to use the same network name (or SSID).
- Set all wireless Access Points to use the same network name (or ESSID).
- Set all stations to disable the WEP encryption key, or set all stations to use an identical WEP encryption key as used by the Access Point.
- Set up wireless channels used by individual Access Points. (It is not necessary to set channels on the stations as the stations will automatically scan through all channels for the nearest Access Point.)

Service Set Identification (SSID)

The Service Set Identification (SSID) is a thirty-two alphanumeric character (maximum) string identifying the wireless local area network. Some vendors refer to the SSID as network name. For stations to communicate with each other, all stations must be configured with the same SSID.

A wireless LAN consisting of nodes operating in Ad-hoc configuration without an Access Point is called a Basic Service Set (BSS). All nodes in a BSS must use the same Basic Service Set ID (BSSID).

In an infrastructure configuration with Access Points, multiple BSS can be configured to form an Extended Service Set (ESS). In this configuration, the Access Points are configured with the same Extended Service Set ID (ESSID). Wireless clients configured with the same ESSID can freely roam from one Access Point domain to another and still maintain seamless connection to the network.

Authentication and WEP Encryption

The absence of a physical connection between nodes makes the wireless links vulnerable to information theft. To provide a certain level of security, IEEE 802.11 standard has defined two types of authentication methods, Open System and Shared Key. Open System authentication is a null algorithm. Shared Key authentication is an algorithm where both the transmitting node and the receiving node share an authentication key to perform a checksum on the original message. By default, IEEE 802.11 wireless devices operate in an open system network.

Wired Equivalent Privacy (WEP) data encryption is utilized when the wireless nodes or access points are configured to operate in Shared Key authentication mode. There are three shared key methods implemented in NETGEAR 802.11b solutions: the standard based 64-bit WEP data encryption and 128-bit WEP data encryption.

The 64-bit WEP data encryption method allows for a five-character (40 bits) input. Additionally, 24 factory-set bits are added to the 40-bit input to generate a 64-bit encryption key. (The 24 factory-set bits are not user configurable.) This encryption key will be used to encrypt/decrypt all data transmitted via the wireless interface. Some vendors may refer to the 64-bit WEP data encryption as 40-bit WEP data encryption since the user configurable key used in the encryption process is only 40 bits wide.

The 128-bit WEP data encryption method consists of 104 configurable bits. Similar to the 64-bit WEP data encryption method, the remaining 24 bits are factory set and not user configurable.

Encryption Key Size	# of Hexadecimal Digits	Example of Hexadecimal Key Content
64-bits (24+40)	10	4C72F08AE1
128-bit (24+104)	26	4C72F08AE19D57A3FF6B260037

Wireless Channel Selection

802.11b

IEEE 802.11b wireless nodes communicate with each other using radio frequency signals in the ISM (Industrial, Scientific, and Medical) band between 2.4 GHz and 2.5 GHz. Neighboring channels are 5 MHz apart. However, due to spread spectrum effect of the signals, a node sending signals using a particular channel will utilize frequency spectrum 12.5 MHz above and below the center channel frequency. As a result, two separate wireless networks using neighboring channels (for example, channel 1 and channel 2) in the same general vicinity will interfere with each other.

Applying two channels that allow the maximum channel separation will decrease the amount of channel cross talk, and provide a noticeable performance increase over networks with minimal channel separation.

Channel	Center Frequency	Frequency Spread
1	2412 MHz	2399.5 MHz – 2424.5 MHz
2	2417 MHz	2404.5 MHz – 2429.5 MHz
3	2422 MHz	2409.5 MHz – 2434.5 MHz
4	2427 MHz	2414.5 MHz – 2439.5 MHz
5	2432 MHz	2419.5 MHz – 2444.5 MHz
6	2437 MHz	2424.5 MHz – 2449.5 MHz
7	2442 MHz	2429.5 MHz – 2454.5 MHz
8	2447 MHz	2434.5 MHz – 2459.5 MHz
9	2452 MHz	2439.5 MHz – 2464.5 MHz
10	2457 MHz	2444.5 MHz – 2469.5 MHz
11	2462 MHz	2449.5 MHz – 2474.5 MHz
12	2467 MHz	2454.5 MHz – 2479.5 MHz
13	2472 MHz	2459.5 MHz – 2484.5 MHz

Note: The available channels supported by the wireless products in various countries are different. For example, Channels 1 to 11 are supported in the U.S. and Canada, and Channels 1 to 13 are supported in Europe and Australia.

Troubleshooting

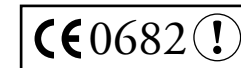
Problem	Cause	Solution
No lights are lit on the Wireless USB Adapter.	The Wireless USB Adapter is not inserted properly into the USB port on your PC. Or the proper MA111 Wireless USB Adapter driver is not loaded.	<ul style="list-style-type: none"> Remove and reinsert the Wireless USB Adapter. Check the device manager in Windows to see if the adapter card is properly recognized in the Windows operating system. Reload the driver if necessary. Try to install the Wireless USB Adapter in different USB port if it's available.
The LED is blinking repeatedly.	The Wireless USB Adapter is not associated to any Access Point properly. You may not have configured the wireless parameters of the wireless nodes to be the same as the Access Point.	<ul style="list-style-type: none"> The Access Point may not be powered on. The Access Point and the MA111 Wireless USB Adapter are not configured with the same wireless parameters. Check the SSID, and WEP encryption settings. The Access Point may be out of range. Try moving the system closer to the Access Point or readjusting the antenna on the Access Point. You may also move the Access Point to a higher location for better signal reception by the Wireless USB Adapter.
I am associated and connected to an Access Point, but I cannot see the other computers on the Ethernet side of the network.	This could be a physical layer problem or a network configuration problem.	<ul style="list-style-type: none"> Check to make sure that the Access Point is physically connected to the Ethernet network. Make sure that the IP addresses and the Windows networking parameters are all configured correctly.

CE Declaration of Conformity

For the following equipment:

Wireless USB Adapter

MA111



is herewith confirmed to comply with the requirements set out in the Council Directive on the Approximation of the Laws of the Member States relating to Electromagnetic Compatibility and Radio Spectrum Matters (99/5/EC), Low-voltage Directive (73/23/EEC) and the Amendment Directive (93/68/EEC). For the evaluation regarding the Directives, the following standards were applied:

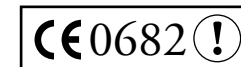
- EN 60950: 2000
- EN 301 489-17 V1.1.1:09-2000
- EN 301 489-1 V1.3.1:09-2001
- EN 300 328-1 V1.3.1: 12-2001
- EN 300 328-2 V1.2.1: 12-2001

Déclaration de conformité CE

Il est certifié que l'équipement suivant :

Wireless USB Adapter

MA111



est conforme aux exigences définies par la Directive du Conseil concernant le rapprochement des législations des États Membres relatives à la compatibilité électromagnétique (99/5/EC), la Directive sur les basses tensions (73/23/CEE) et la Directive d'amendement (93/68/CEE). Les normes suivantes ont été appliquées pour évaluer la conformité à ces Directives :

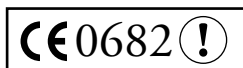
- EN 60950: 2000
- EN 301 489-17 V1.1.1:09-2000
- EN 301 489-1 V1.3.1:09-2001
- EN 300 328-1 V1.3.1: 12-2001
- EN 300 328-2 V1.2.1: 12-2001

CE-Konformitätserklärung

Für folgendes Gerät:

Wireless USB Adapter

MA111



wird hiermit bestätigt, dass das Gerät den Anforderungen der Richtlinie zur Angleichung der Rechtsvorschriften der Mitgliedstaaten in Bezug auf Elektromagnetische Verträglichkeit (99/5/EC), Niederspannung (73/23/EEC) und der abgeänderten Verordnung (93/68/EEC) entspricht. Für die Bewertung der Richtlinien wurden folgende Standards angewandt:

- EN 60950: 2000
- EN 301 489-17 V1.1.1:09-2000
- EN 301 489-1 V1.3.1:09-2001
- EN 300 328-1 V1.3.1: 12-2001
- EN 300 328-2 V1.2.1: 12-2001

Statement of Conditions

In the interest of improving internal design, operational function, and/or reliability, NETGEAR reserves the right to make changes to the products described in this document without notice. NETGEAR does not assume any liability that may occur due to the use or application of the product(s) or circuit layout(s) described herein.

Certificate of the Manufacturer/Importer

It is hereby certified that the Model MA111 802.11b Wireless USB Adapter has been suppressed in accordance with the conditions set out in the BMPT- AmtsblVfg 243/1991 and Vfg 46/1992. The operation of some equipment (for example, test transmitters) in accordance with the regulations may, however, be subject to certain restrictions. Please refer to the notes in the operating instructions.

Federal Office for Telecommunications Approvals has been notified of the placing of this equipment on the market and has been granted the right to test the series for compliance with the regulations.

VCCI Statement

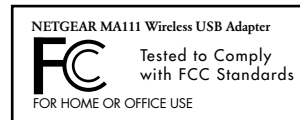
This equipment is in the Class B category (information equipment to be used in residential area or an adjacent area thereto) and conforms to the standards set by the Voluntary Control Council for Interference by Data Processing Equipment and Electronic Office Machines aimed at preventing radio interference in such residential areas. When used near a radio or TV receiver, it may become the cause of radio interference. Read instruction for correct handling.

Federal Communications Commission (FCC) Compliance Notice: Radio Frequency Notice

NETGEAR, Inc., 4500 Great America Parkway, Santa Clara, CA 95054,

(408) 907-8000, declares under our sole responsibility, that this device complies with part 15 of the FCC Rules. Operation is subject to the following two conditions:

- This device may not cause harmful interference.
- This device must accept any interference received, including interference that may cause undesired operation.



Warning!

To comply with the FCC's rf exposure requirements you must maintain a distance of at least 1 cm from the with FCC Standards antenna of this device while it is in use. This device should not be co-located with other transmitters.

Note: This equipment has been tested and found to comply with the limits for a Class B digital device, pursuant to part 15 of the FCC Rules. These limits are designed to provide reasonable protection against harmful interference in a residential installation. This equipment generates, uses, and can radiate radio frequency energy and, if not installed and used in accordance with the instructions, may cause harmful interference to radio communications. However, there is no guarantee that interference will not occur in a particular installation. If this equipment does cause harmful interference to radio or television reception, which can be determined by turning the equipment off and on, the user is encouraged to try to correct the interference by one or more of the following measures: (1) Reorient or relocate the receiving antenna, (2) Increase the separation between the equipment and receiver, (3) Connect the equipment into an outlet on a circuit different from that to which the receiver is connected, (4) Consult the dealer or an experienced radio/TV technician for help.

Federal Communications Commission (FCC) Radiation Exposure Statement

This equipment complies with FCC radiation exposure limits set forth for an uncontrolled environment. In order to avoid the possibility of exceeding the FCC radio frequency exposure limits, human proximity to the antenna shall not be less than 20 cm (8 inches) during normal operation.

Canadian Department of Communications Radio Interference Regulations

This digital apparatus (Model MA111 802.11b Wireless USB Adapter) does not exceed the Class B limits for radio-noise emissions from digital apparatus as set out in the Radio Interference Regulations of the Canadian Department of Communications.

Technical Support

PLEASE REFER TO THE SUPPORT INFORMATION CARD THAT SHIPPED WITH YOUR PRODUCT.

By registering your product at *www.NETGEAR.com/register*, we can provide you with faster expert technical support and timely notices of product and software upgrades.

NETGEAR, INC.

Support Information

Phone: 1-888-NETGEAR (For US & Canada only)

See Support Information card for other countries.

E-mail: support@NETGEAR.com

www.NETGEAR.com

©2003 NETGEAR, Inc. NETGEAR, the Netgear logo, The Gear Guy, Auto Uplink and Everybody's Connecting are trademarks or registered trademarks of Netgear, Inc. in the United States and/or other countries. Microsoft and Windows are registered trademarks of Microsoft Corporation in the United States and/or other countries. Other brand and product names are trademarks or registered trademarks of their respective holders. Information is subject to change without notice. All rights reserved.



U - 1 0 0 3 0 - 0 1

March 2003

Free Manuals Download Website

<http://myh66.com>

<http://usermanuals.us>

<http://www.somanuals.com>

<http://www.4manuals.cc>

<http://www.manual-lib.com>

<http://www.404manual.com>

<http://www.luxmanual.com>

<http://aubethermostatmanual.com>

Golf course search by state

<http://golfingnear.com>

Email search by domain

<http://emailbydomain.com>

Auto manuals search

<http://auto.somanuals.com>

TV manuals search

<http://tv.somanuals.com>