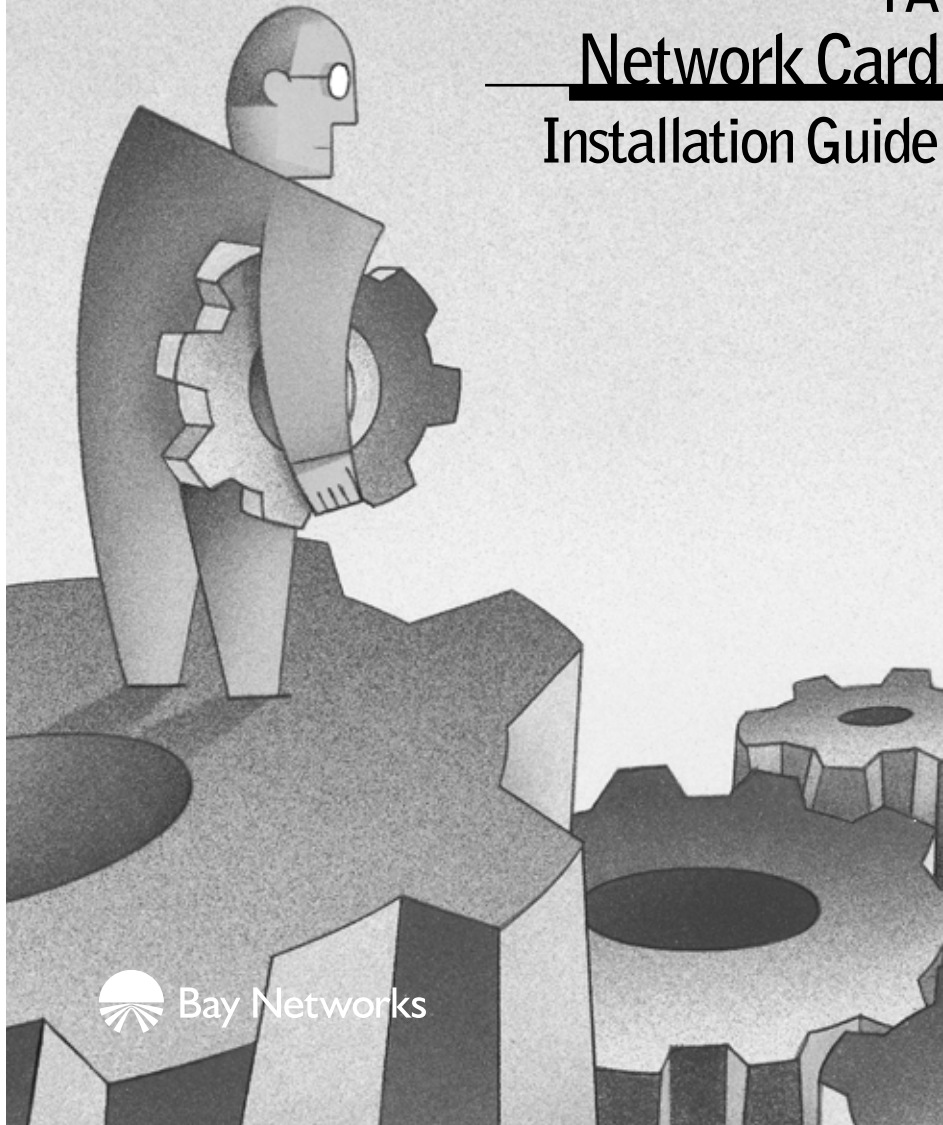


NETGEAR

MODEL FA 310TX

Network Card Installation Guide



 Bay Networks



Start Here

Instructions in this guide are for users of Windows® 95 who are installing the Model FA310TX Network Card. For instructions on installing and verifying the Windows 95 network driver, refer to “Install the Windows 95 Network Driver” on the other side of this guide.

These three easy steps are provided in this guide for installing your Model FA310TX Network Card:

1. Verify Package Contents
2. Install the Network Card
3. Connect the Network Cables

As a last step, be sure to register your NETGEAR product.

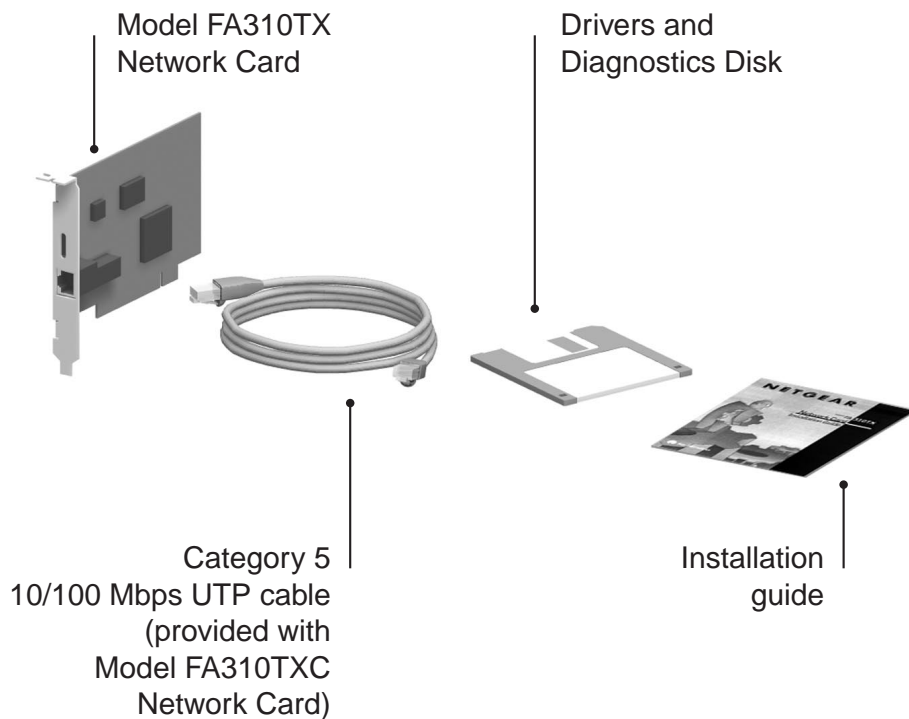


Note: If you are using other network operating systems: Insert the Drivers and Diagnostics Disk in Drive A, type the command A:\HELP, press [Enter] to execute the program, press [Enter] again to pass the opening screen, select the name of the operating system, press [Enter], and then follow the instructions on the screen.



Verify Package Contents

Unpack the contents of the package and make sure that you have everything.



9014FA

Verify PC Requirements

The instructions given in this guide are for using the NETGEAR™ Model FA310TX Network Card in a PC that has a Microsoft® Windows 95 operating system.

You must have a PC with a PCI expansion slot that has bus mastering capability.

2

Install the Network Card



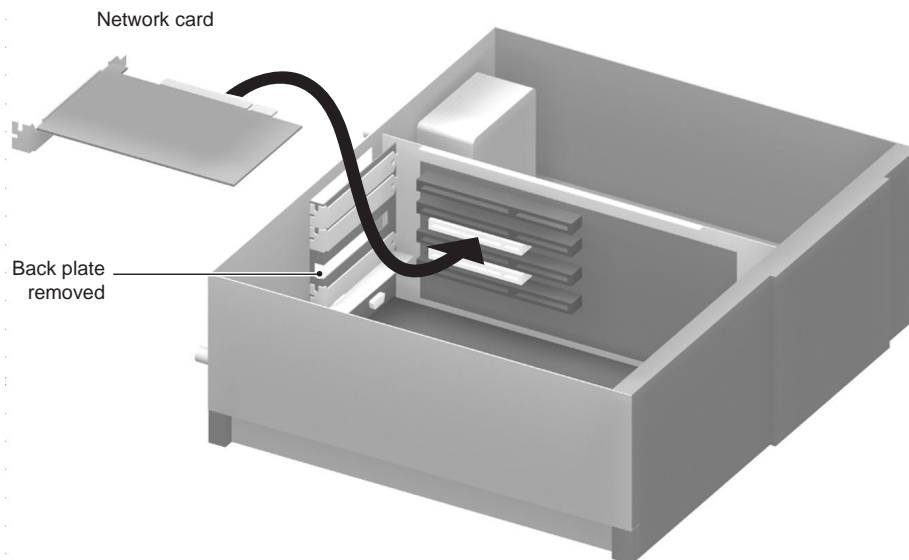
Note: Touch a grounded metal object to free yourself of static electricity before you handle the network card.

1. **Turn the power off and unplug the power cord from your computer.**
2. **Remove the PC cover.**
3. **Choose an available PCI slot (PCI slots are the shorter slots) and remove the corresponding back plate from the PC chassis.**
4. **Insert the network card into the PCI expansion slot.**



Note: To avoid damaging any components on the network card, handle it by the edges, using your thumbs to push it securely into the PCI slot. Make sure the network card is fully inserted into the slot to prevent the PC operating system from freezing at startup.

5. **Fasten the network card to the rear of the computer chassis by tightening the screw that is on the PC.**
6. **Replace the PC cover and reconnect the power cord to the PC.**



7983FB

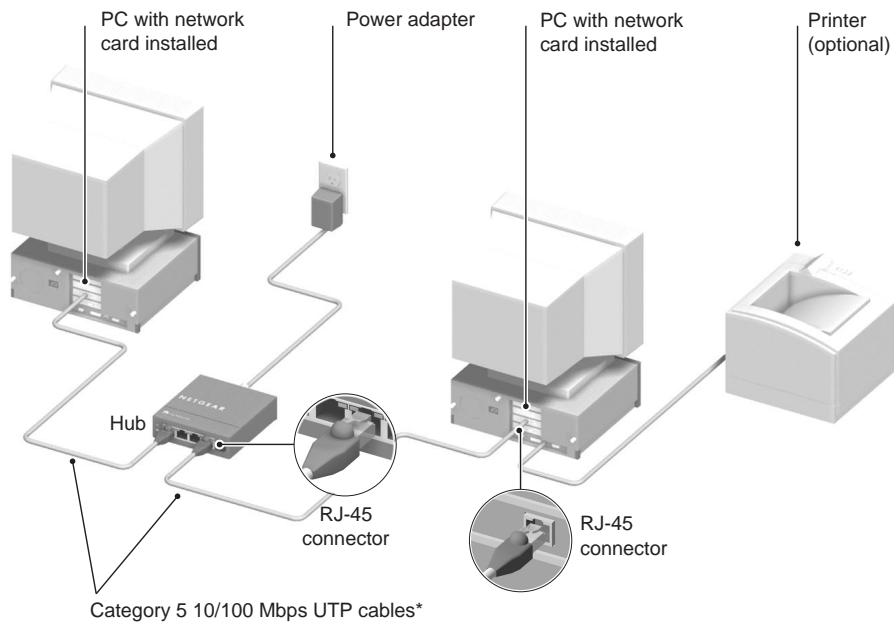
3

Connect the Network Cables

Using the appropriate UTP cable, connect any port on a network hub to the port on the network card.



Note: One of the ports on NETGEAR hubs is switchable between Normal (MDI-X) and Uplink (MDI) with a Normal/Uplink push button. If you are using this switchable port on a NETGEAR hub to connect to a PC or the network card, make sure the Normal/Uplink push button is set to Normal.



*Use the cables provided or any Category 5 UTP cable.
Maximum length = 100 meters (300 feet)

7995FB



Install the Windows 95 Network Driver

This guide provides instructions for installing the Windows 95 Network Driver. All versions of Windows 95 might not respond with the same screens. Therefore, windows that are different from those shown in these instructions might open but prompt you for the same information, and windows might open in a different order than the order of the steps in these instructions.



Note: You must install the network card (instructions on other side of this guide) before installing the network driver.

You need to have the Windows 95 CD-ROM and the FA310TX Drivers and Diagnostics Disk ready to use in the installation process.

If you have not yet named your PC and your network, before you proceed with the installation steps, decide on a name for your network and for each PC. When the “Network” window opens, it prompts you to “... provide computer and workgroup names....” Click on “OK.” The second “Network” window opens and prompts you for the names. **Enter a name (a different one-word name for each computer) in the “Computer name” entry field; enter a workgroup name (the name of your entire network) in the “Workgroup” entry field. Click on “OK” or “Close.”**



Note: If the “Insert Disk” window opens and the “Please insert the disk labeled Windows 95...” message appears at any time during the installation process, insert the Windows 95 CD-ROM in Drive D (the CD-ROM drive) and click on “OK.” Then follow the next step in the instructions.

1. Turn on the power to the computer and start Windows 95.

The new hardware is found, and the driver is automatically loaded.

2.



Select “Driver from disk provided by hardware manufacturer,” and then click on “OK.”

If a different “New Hardware Found” window opens that prompts you to click on “Next,” doing so opens the “Update Device Driver Wizard” window in step 3.

3.



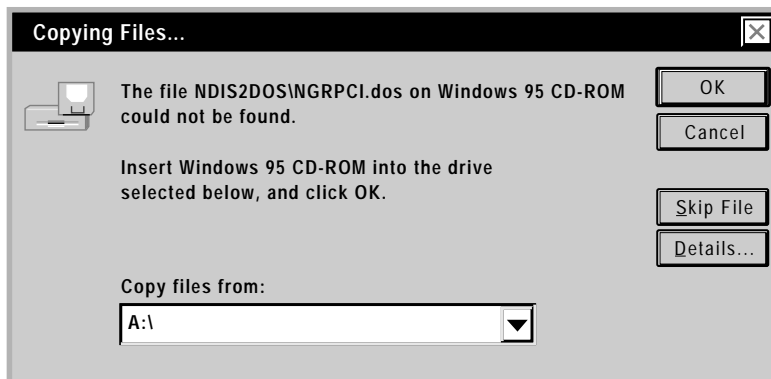
Insert the FA310TX Drivers and Diagnostics Disk in Drive A, and then click on “Next.”

4.



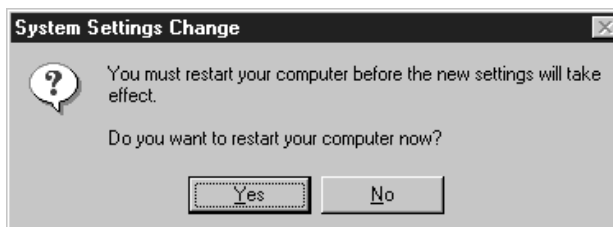
Click on “Finish.”

5.



Type A:\ in the “Copy files from” entry field and click on “OK.”

6.



Remove the Drivers and Diagnostics Disk from the floppy drive, remove the Windows 95 CD-ROM from the CD drive (if you have inserted it), and then click on “Yes.”

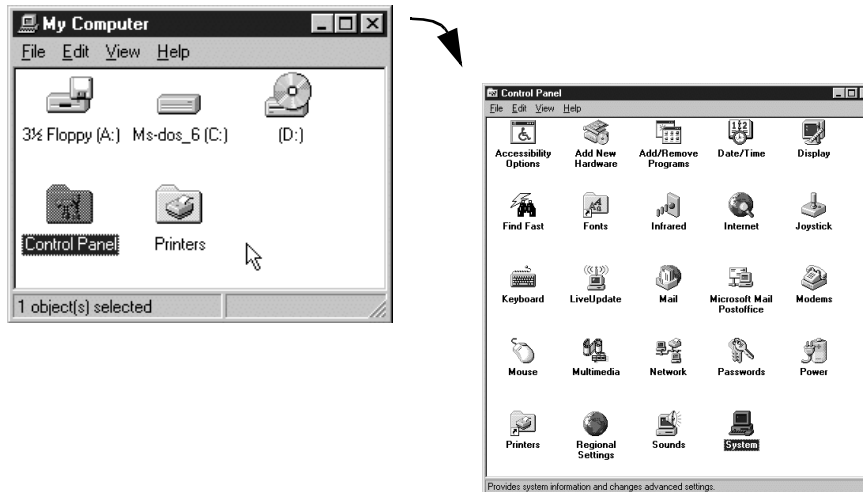
Restarting your system is necessary to enable your PC to finish setting up your new hardware.

7. Proceed to “Verify Installation.”



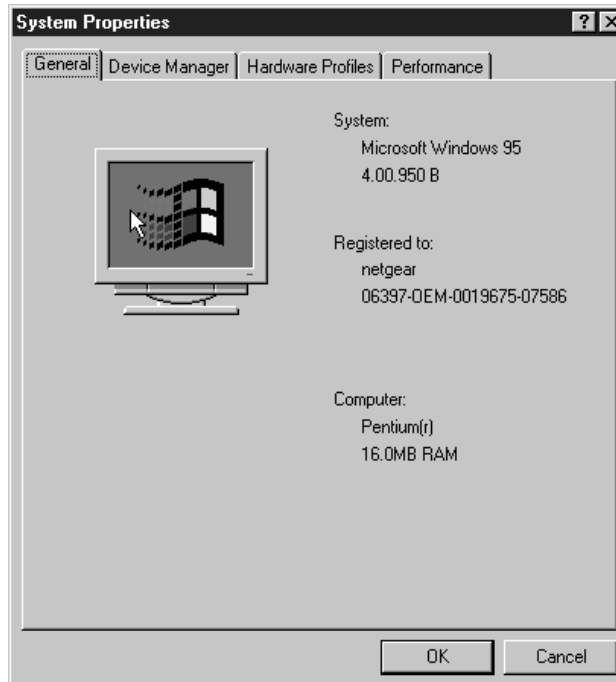
Verify Installation

1.



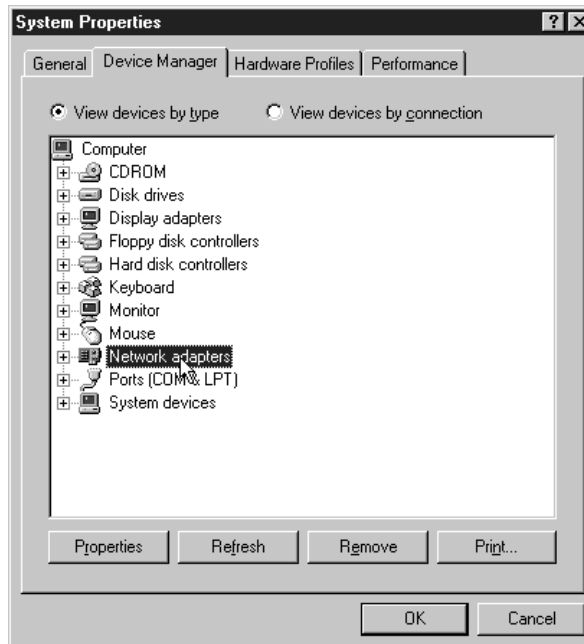
Double-click on “My Computer” on the desktop, double-click on “Control Panel,” and then double-click on “System.”

2.



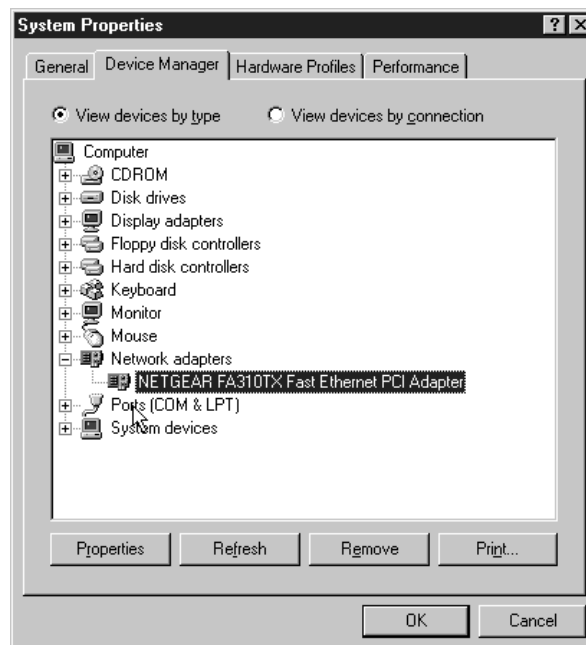
Click on “Device Manager.”

3.



Double-click on “Network adapters.”

4.



If there is a problem with the installation of the driver, an exclamation point appears next to “NETGEAR FA310TX Fast Ethernet PCI Adapter.” If there is an exclamation point, double-click on “NETGEAR FA310TX Fast Ethernet PCI Adapter.” The “Properties” window opens, and a message regarding the status of the device is displayed in the window. Continue to click on “OK” or click on the “X” in the right hand corner to close any open windows and return to the Windows 95 desktop.



Technical Specifications

Standards Compatibility	IEEE 802.3u, 100BASE-TX Fast Ethernet IEEE 802.3i, 10BASE-T Ethernet NetWare tested and approved Microsoft Windows, Windows 95, Windows NT® compatible PCI Plug-and-Play compatible
DC operating voltage	+5V +/- 5% @ 630 mA maximum
Physical Specifications	
Dimensions	5.125 x 2.813 in. 13.02 x 7.15 cm
Weight	.20 lb (90 g)
Environmental Specifications	
Operating temperature	0° to 40° C
Operating humidity	10% to 90% noncondensing
Agency Compliance	CE mark, commercial
	FCC, Part 15, Class B
	EN 55 022 (CISPR 22), Class B
	Canada ICES-003, Class B
Interface Options	RJ-45 connector for 10BASE-T or 100BASE-T Ethernet interface



Hardware Warranty Information

Thank you for selecting NETGEAR products.

Subject to the provisions described below, this NETGEAR product is protected by a limited lifetime warranty from defects in material and workmanship.

Should a product fail to perform as described above within the first year following the original date of purchase, NETGEAR will ship a replacement for the failed product upon return of the defective product.

Products that fail after the first year following the original date of purchase will be repaired or replaced with the same or functionally equivalent, product by NETGEAR, at its discretion, free of charge provided you (1) have, within 30 days of the original date of purchase, completed and returned the Owner Registration Cards which accompanied the products when shipped, (2) return the failed product to NETGEAR designated repair facility with shipping charge prepaid, and (3) provide NETGEAR with proof of the original date of purchase. Repaired or replacement products will be returned to you with shipping charges prepaid.

Replacement products may be refurbished or contain refurbished materials. If NETGEAR, by its sole determination, is unable to repair or replace the defective product, it will refund the depreciated purchase price of the product.

This warranty does not apply if, in the judgement of NETGEAR, the product fails due to damage from shipment, handling, storage, accident, abuse or misuse, or if it has been used or maintained in a manner not conforming to product manual instructions, has been modified in any way, or has had any serial number removed or defaced. Repair by anyone other than NETGEAR or an approved agent will void this warranty. The maximum liability of NETGEAR under this warranty is limited to the purchase price of the product covered by the warranty.

Prior to returning any defective product, the end customer or the reseller from whom the end customer originally purchased the product must obtain a Return Materials Authorization (RMA) number from NETGEAR. All defective products should be returned to NETGEAR with shipping charges prepaid. NETGEAR will not accept collect shipments.

EXCEPT AS SPECIFICALLY PROVIDED IN THIS AGREEMENT OR AS REQUIRED BY LAW, THE WARRANTIES AND REMEDIES STATED ABOVE ARE EXCLUSIVE AND IN LIEU OF ALL OTHERS, ORAL OR WRITTEN, EXPRESS OR IMPLIED. ANY AND ALL OTHER WARRANTIES, INCLUDING IMPLIED WARRANTIES OF MERCHANTABILITY, FITNESS FOR A PARTICULAR PURPOSE AND NONINFRINGEMENT OF THIRD PARTY RIGHTS ARE EXPRESSLY EXCLUDED. NETGEAR SHALL NOT UNDER ANY CIRCUMSTANCES BE LIABLE TO ANY PERSON FOR ANY SPECIAL, INCIDENTAL, INDIRECT OR CONSEQUENTIAL DAMAGES, INCLUDING WITHOUT LIMITATION, DAMAGES RESULTING FROM USE OR MALFUNCTION OF THE PRODUCTS, LOSS OF PROFITS OR REVENUES OR COSTS OF REPLACEMENT GOODS, EVEN IF NETGEAR IS INFORMED IN ADVANCE OF THE POSSIBILITY OF SUCH DAMAGES.

IMPORTANT!

Please register online. **YOU MUST REGISTER TO OBTAIN TECHNICAL SUPPORT.**

PLEASE RETAIN PROOF OF PURCHASE and this warranty information.

To get product support, or to obtain product information and NETGEAR product documentation, direct your Web browser to the Web page at:

<http://netgear.baynetworks.com>

To register online, direct your Web browser to the Web page at:

<http://garguy.com.pub.registration>

If you do not have access to the World Wide Web, you can print a registration card and mail it to NETGEAR customer service. The card is included on your Drivers and Diagnostics disk as a Microsoft Word document file called *filename*. Download the file, print the form, and fill in the information. Then mail the completed form to:

NETGEAR, Inc.
P.O. Box 58185
Santa Clara, CA 95052-9916

NETGEAR

NETGEAR, Inc.
A Bay Networks Company
4401 Great America Parkway
Santa Clara, CA 95054 USA
Phone: 888-NETGEAR



Support Information

Defective or Damaged Merchandise

Defective or damaged merchandise can be returned to your point-of-purchase representative.

Internet/World Wide Web

To get product support, to register your product online, or to obtain product information and NETGEAR product documentation, direct your Web browser to:

<http://NETGEAR.baynetworks.com>

Customer Support

You can contact Customer Support at the following toll free numbers:

Australia: 1800-142-046

Korea: 00308-11-0319

Austria: 0800-06384327

New Zealand: 0800-444-626

(008000-NETGEAR)

Sweden: 020-790086

Canada: 888-NETGEAR

Switzerland: 00800-06384327

France: 0800-90-2078

(008000-NETGEAR)

Germany: 00800-06384327

United Kingdom: 0171-571-5120

(008000-NETGEAR)

United States: 888-NETGEAR

Japan: 0120-66-5402



Free Manuals Download Website

<http://myh66.com>

<http://usermanuals.us>

<http://www.somanuals.com>

<http://www.4manuals.cc>

<http://www.manual-lib.com>

<http://www.404manual.com>

<http://www.luxmanual.com>

<http://aubethermostatmanual.com>

Golf course search by state

<http://golfingnear.com>

Email search by domain

<http://emailbydomain.com>

Auto manuals search

<http://auto.somanuals.com>

TV manuals search

<http://tv.somanuals.com>