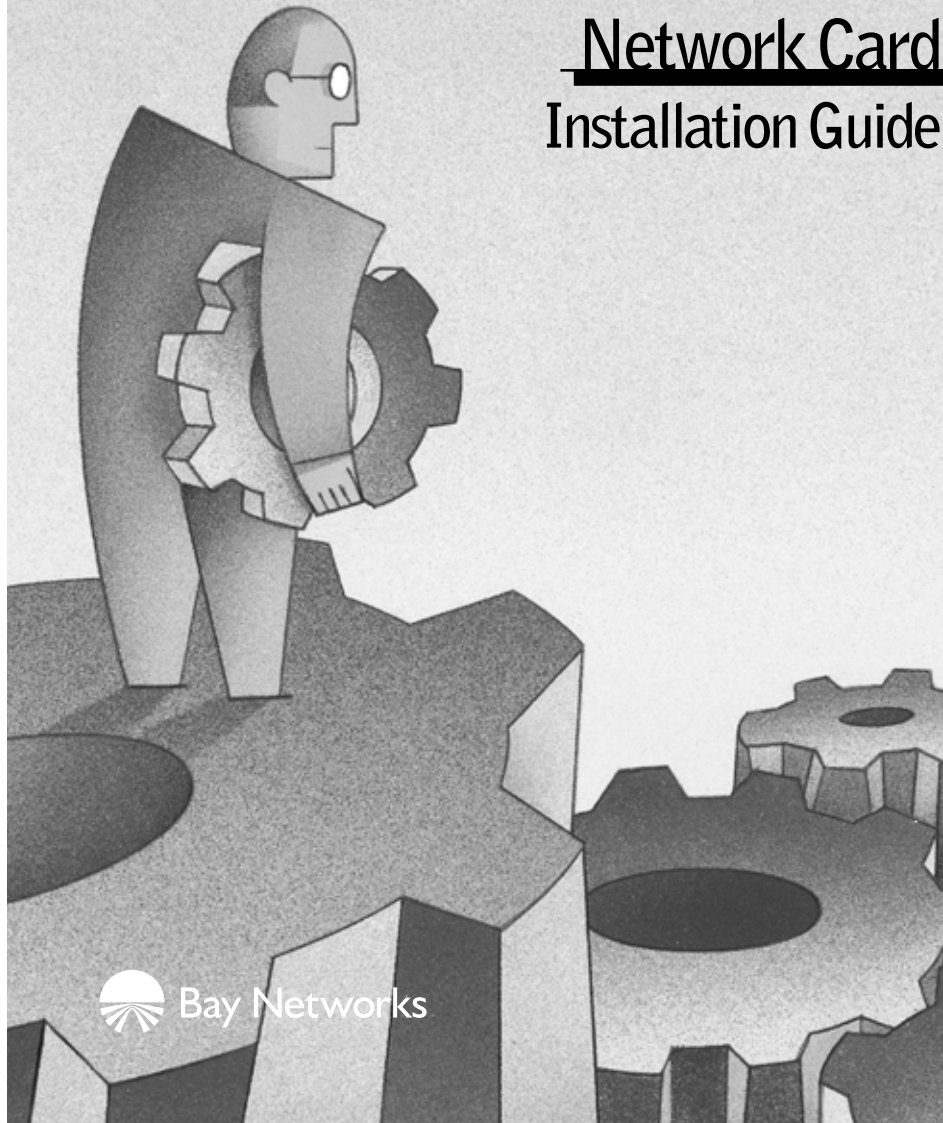


NETGEAR

MODEL FA 510

Network Card Installation Guide



 Bay Networks



Start Here

Instructions in this guide are for users of Windows® who are installing the Model FA510 Network Card. For instructions on installing and verifying the Windows network driver, refer to “Install the Windows Network Driver” on the other side of this guide.

These four easy steps provide information for installing your Model FA510 Network Card:

1. Verify Package Contents
2. Install the Network Card
3. Connect the Network Cables
4. Install the Network Driver

As a last step, be sure to fill out and send in your warranty card.

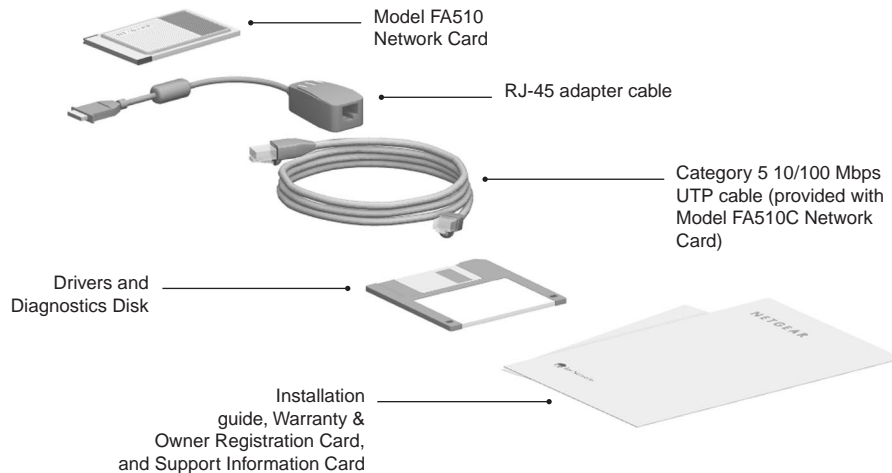
To register online, direct your Web browser to the Web page at:

<http://www.gearguy.com/pub/registration>



Verify Package Contents

Unpack the contents of the package and make sure that you have everything.



9034FA

Verify PC Requirements

The instructions given in this guide are for using the NETGEAR™ Model FA510 Network Card in a PC that has a Microsoft® Windows operating system.

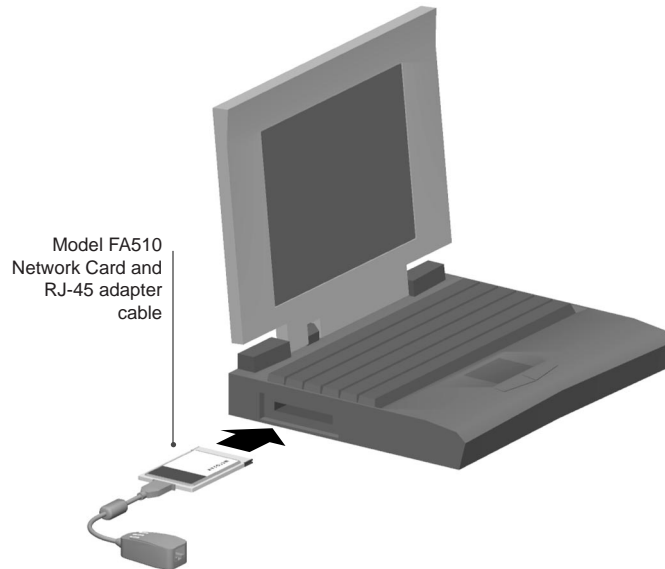
2 Install the Network Card

The Model FA510 Network Card is hot swappable, which means it can be inserted into a PC that is either turned off or powered on.

1. **Insert the Model FA510 Network Card into the CardBus slot as illustrated in the figure.**

Some PCs have two CardBus slots. The Model FA510 Network Card can be inserted into either slot.

2. **Insert the RJ-45 adapter cable into the connector on the edge of the network card.**
3. **Insert the Category 5 10/100 Mbps UTP cable into the RJ-45 adapter cable.**



9025FA

4. **If you have chosen to install the card with the power turned off, turn on the power to the PC.**

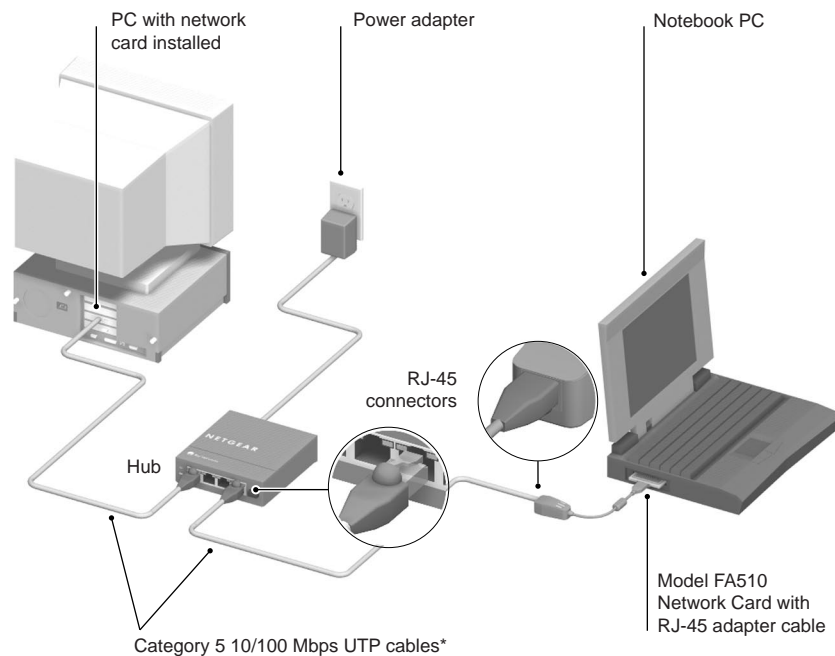


Connect the Network Cables

1. Using a UTP cable, connect any port on the hub to the port on the RJ-45 adapter cable.
2. To connect the network cables, follow the illustration below.



Note: One of the ports on NETGEAR hubs is switchable between Normal (MDI-X) and Uplink (MDI) with a Normal/Uplink push button. If you are using this switchable port on a NETGEAR hub to connect to a PC or the network card, make sure the Normal/Uplink push button is set to Normal.



*Use the cable provided or any Category 5 UTP cable.
Maximum length = 100 meters (300 feet)

9026FA

4 Install the Network Driver

This guide provides you with instructions for installing the Windows Network Driver. The steps given in these instructions are for users of Windows 98.

If you are using Windows 95, read these instructions thoroughly for an overview of the steps that are necessary for the installation of the software driver. If you are installing network cards and drivers on more than one computer operating with Windows 95, you might find that all versions of Windows 95 do not respond with the same screens, and windows might open in a different order.



Note: You must install the network card (instructions on other side of this guide) before installing the network driver.

Before you proceed with the installation steps, decide on a name for your network and for each PC (each name must be only one word). You also need to have the Windows CD-ROM and the FA510 Drivers and Diagnostics Disk ready to use in the installation process.



Note: If the “Insert Disk” window opens and the “Please insert the disk labeled Windows 98...” message appears at any time during the following process, insert the Windows 98 CD-ROM in Drive D (the CD-ROM drive) and click on “OK.” Then follow the next step in the instructions.

1. Turn on the power to the computer and start Windows 98.

The new hardware is found.

2.



Click on “Next.”

3.



Select “Search for the best driver....”

Click on “Next.”

4.



Select “Floppy disk drives.”

Select “Specify a Location” and make sure the location is “A:\.”

Insert the Drivers and Diagnostics Disk into the floppy drive, and click on “Next.”

5.



Click on “The updated driver...” and click on “Next.”

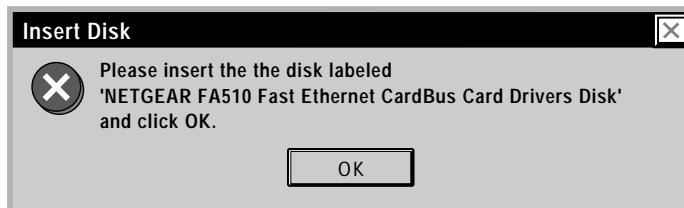
6.



Make sure that the location and the correct driver are displayed (for example, A:\NETFA510.INF).

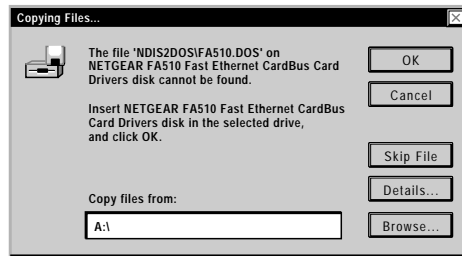
Click on “Next.”

7.



Click on “OK.”

8.



Insert the Drivers and Diagnostics Disk and click on “OK.”



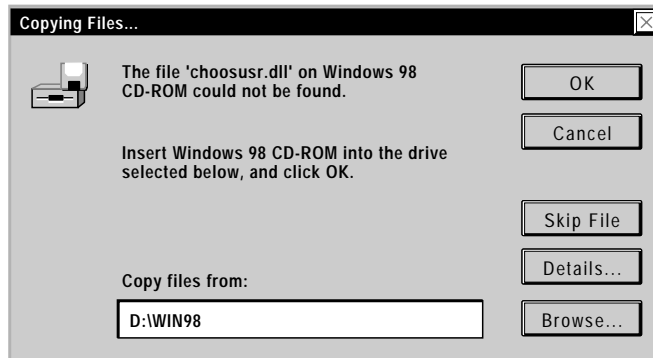
Note: If you copied the Windows 98 CD-ROM to your hard drive, the next two screens may not appear.

9.



Click on “OK.”

10.



Insert the Windows 98 CD-ROM.

Make sure the designated path to the Windows 98 CD-ROM is displayed in the “copy files from” prompt line (for example, D:\WIN98).

Click on “OK.”

11.



Click on “Finish.”

12.



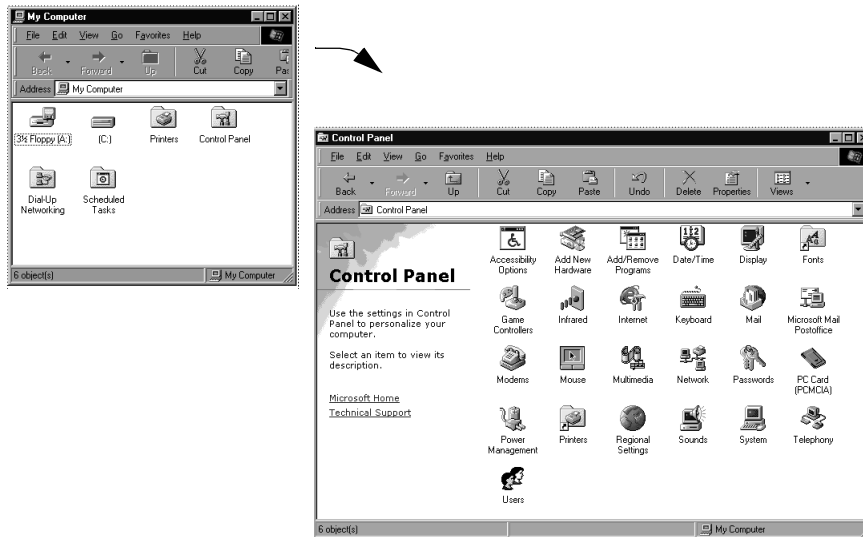
Be sure to remove the Drivers and Diagnostics Disk and the Windows 98 CD-ROM before restarting your computer.

Click on “Yes” to restart your computer.

13. Proceed to “Verify Installation.”

Verify Installation

1.



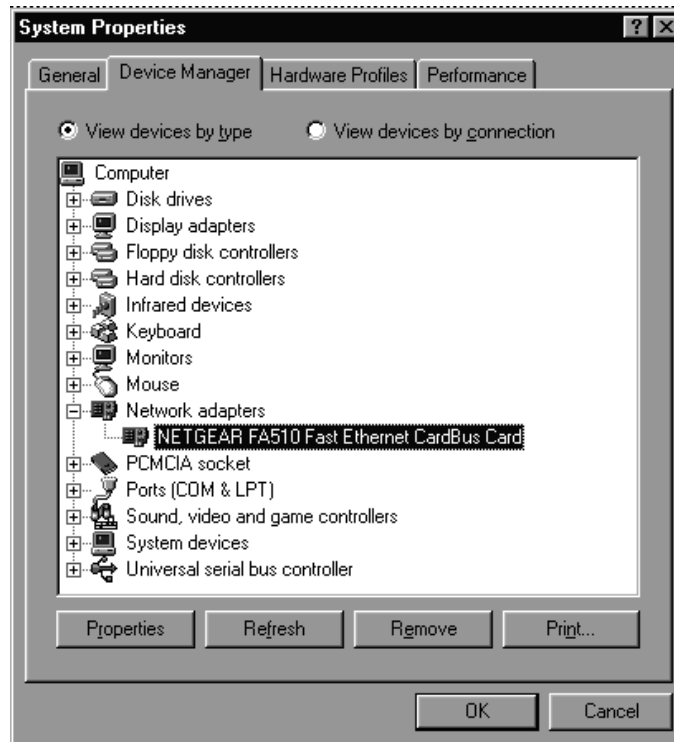
Double-click on “My Computer” on your desktop, double-click on “Control Panel,” and then double-click on “System.”

2.



Click on “Device Manager.”

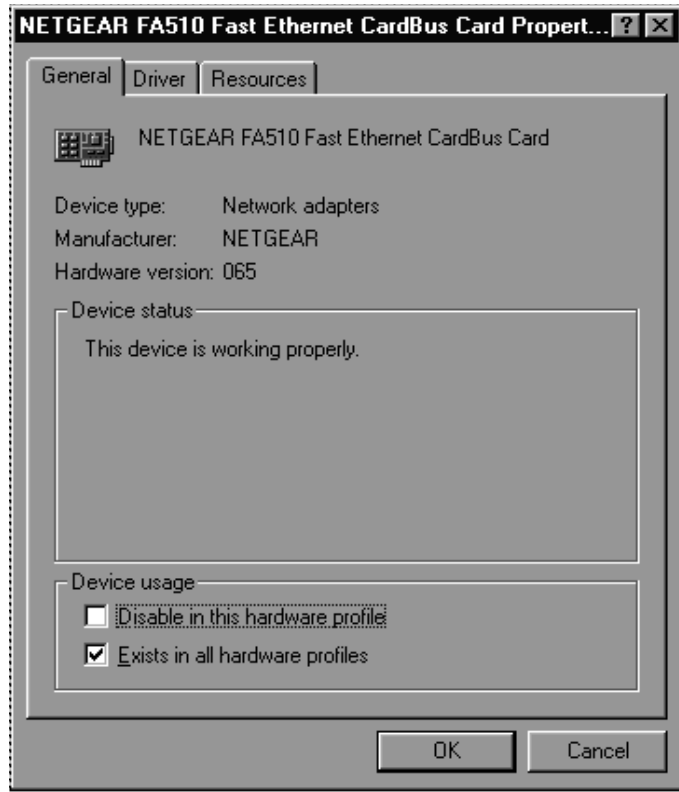
3.



Double-click on “Network adapters” and then double-click on “NETGEAR FA510 Fast Ethernet CardBus Card.”

**If there is a problem with the installation of the driver, an exclamation point appears next to “NETGEAR FA510 Fast Ethernet PCI Adapter.”
If there is an exclamation point, double-click on “NETGEAR FA510 Fast Ethernet PCI Adapter.”**

4.



The “Properties” window opens, and a message regarding the status of the device is displayed in the window.

Continue to click on “OK” or click on the “X” in the right-hand corner to close any open windows and return to the Windows 98 desktop.



Technical Specifications

Model FA510 Network Card	
Standards Compatibility	NetWare tested and approved Microsoft® Windows 95, Windows 98, Windows NT® compatible IEEE 802.3i, 10BASE-T Ethernet IEEE 802.3u 100BASE-TX Fast Ethernet
Interface Options	RJ-45 connector
IRQ Options	Assigned by Plug-and-Play system
Power Consumption	2.0 W
Physical Specifications	
Dimensions	3.37 by 2.13 in. 8.56 by 5.40 cm
Weight	0.14 lb (63 g)
Environmental Specifications	
Operating temperature	0° to 45° C
Operating humidity	10% to 90% noncondensing
Agency Compliance	CE mark, commercial
	FCC, Part 15, Class B
	EN 55 022 (CISPR 22), Class B
	Canada ICES-003, Class B
	VCCI Class B

© 1999 by NETGEAR, Inc. All rights reserved.

Trademarks

Bay Networks is a registered trademark of Bay Networks, Inc. NETGEAR is a trademark of Bay Networks, Inc.

Microsoft, Windows, and Windows NT are registered trademarks of Microsoft Corporation.

All other trademarks and registered trademarks are the property of their respective owners.

Statement of Conditions

In the interest of improving internal design, operational function, and/or reliability, NETGEAR reserves the right to make changes to the products described in this document without notice.

NETGEAR does not assume any liability that may occur due to the use or application of the product(s) or circuit layout(s) described herein.

Certificate of the Manufacturer/Importer

It is hereby certified that the Model FA510 Network Card has been suppressed in accordance with the conditions set out in the BMPT-AmtsblVfg 243/1991 and Vfg 46/1992. The operation of some equipment (for example, test transmitters) in accordance with the regulations may, however, be subject to certain restrictions. Please refer to the notes in the operating instructions.

Federal Office for Telecommunications Approvals has been notified of the placing of this equipment on the market and has been granted the right to test the series for compliance with the regulations.

Federal Communications Commission (FCC) Compliance Notice: Radio Frequency Notice

This device complies with part 15 of the FCC Rules. Operation is subject to the following two conditions:

1. This device may not cause harmful interference.
2. This device must accept any interference received, including interference that may cause undesired operation.

Note: This equipment has been tested and found to comply with the limits for a Class B digital device, pursuant to part 15 of the FCC Rules. These limits are designed to provide reasonable protection against harmful interference in a residential installation. This equipment generates, uses, and can radiate radio frequency energy and, if not installed and used in accordance with the instructions, may cause harmful interference to radio communications. However, there is no guarantee that interference will not occur in a particular installation. If this equipment does cause harmful interference to radio or television reception, which can be determined by turning the equipment off and on, the user is encouraged to try to correct the interference by one or more of the following measures: (1) Reorient or relocate the receiving antenna, (2) Increase the separation between the equipment and receiver, (3) Connect the equipment into an outlet on a circuit different from that to which the receiver is connected, (4) Consult the dealer or an experienced radio/TV technician for help.



EN 55 022 Statement

This is to certify that the Model FA510 Network Card is shielded against the generation of radio interference in accordance with the application of Council Directive 89/336/EEC, Article 4a. Conformity is declared by the application of EN 55 022 Class B (CISPR 22).

Compliance is dependent upon the use of shielded data cables.

Canadian Department of Communications Radio Interference Regulations

This digital apparatus (Model FA510 Network Card) does not exceed the Class B limits for radio-noise emissions from digital apparatus as set out in the Radio Interference Regulations of the Canadian Department of Communications.

Règlement sur le brouillage radioélectrique du ministère des Communications

Cet appareil numérique (Model FA510 Network Card) respecte les limites de bruits radioélectriques visant les appareils numériques de classe B prescrites dans le Règlement sur le brouillage radioélectrique du ministère des Communications du Canada.

NETGEAR

NETGEAR, Inc.
A Bay Networks Company
4401 Great America Parkway
Santa Clara, CA 95054 USA
Phone: 888-NETGEAR
<http://WWW.NETGEARinc.com>



Model FA510 Network Card Installation Guide

Free Manuals Download Website

<http://myh66.com>

<http://usermanuals.us>

<http://www.somanuals.com>

<http://www.4manuals.cc>

<http://www.manual-lib.com>

<http://www.404manual.com>

<http://www.luxmanual.com>

<http://aubethermostatmanual.com>

Golf course search by state

<http://golfingnear.com>

Email search by domain

<http://emailbydomain.com>

Auto manuals search

<http://auto.somanuals.com>

TV manuals search

<http://tv.somanuals.com>