

# NETGEAR®

## ProSAFE 26-Port Fast Ethernet Smart Switch FS526Tv2

### Hardware Installation Guide



July 2013  
202-11251-02

350 East Plumeria Drive  
San Jose, CA 95134  
USA

## Support

Thank you for selecting NETGEAR products.

After installing your device, locate the serial number on the label of your product and use it to register your product at <https://my.netgear.com>. You must register your product before you can use NETGEAR telephone support. NETGEAR recommends registering your product through the NETGEAR website. For product updates and web support, visit <http://support.netgear.com>.

Phone (US & Canada only): 1-888-NETGEAR.

Phone (Other Countries): Check the list of phone numbers at <http://support.netgear.com/general/contact/default.aspx>.

## Trademarks

NETGEAR, the NETGEAR logo, and Connect with Innovation are trademarks and/or registered trademarks of NETGEAR, Inc. and/or its subsidiaries in the United States and/or other countries. Information is subject to change without notice. © NETGEAR, Inc. All rights reserved.

## Revision History

| Publication Part Number | Publish Date | Comments   |
|-------------------------|--------------|--|
| 202-11251-02            | July 2013    | <ul style="list-style-type: none"><li>Added information about the product label</li><li>Replaced references to the Software Administration Manual with references to the web management user guide</li></ul> |
| 202-11251-01            | June 2013    | First publication  |

# Contents

## Chapter 1 Introduction and Hardware Description

|  |    |
|--|----|
| Overview . . . . .                                 | 5  |
| Switch Features . . . . .                          | 6  |
| Package Contents . . . . .                         | 7  |
| Front Panel . . . . .                              | 8  |
| Back Panel . . . . .                               | 8  |
| LEDs . . . . .                                     | 9  |
| Product Label . . . . .                            | 9  |
| RJ-45 Ports . . . . .                              | 10 |
| Factory Defaults Button and Reset Button . . . . . | 10 |

## Chapter 2 Installation

|  |    |
|--|----|
| Step 1: Prepare the Site . . . . .   | 12 |
| Step 2: Install the Switch . . . . .   | 12 |
| Install the Switch on a Flat Surface . . . . .   | 12 |
| Install the Switch in a Rack . . . . .   | 13 |
| Step 3: Check the Installation . . . . .   | 14 |
| Step 4: Connect Devices to the Switch . . . . .  | 14 |
| Step 5: Apply AC Power . . . . .   | 15 |
| Step 6: Manage the Switch through a Web Browser or<br>through the Smart Control Center . . . . . | 15 |

## Chapter 3 Troubleshooting

|                                       |    |
|---------------------------------------|----|
| Troubleshooting Chart . . . . .       | 17 |
| Troubleshooting Suggestions . . . . . | 17 |
| Network Adapter Cards . . . . .       | 17 |
| Configuration . . . . .               | 18 |
| Switch Integrity . . . . .            | 18 |
| Autonegotiation . . . . .             | 18 |

## Appendix A Physical and Technical Specifications

# Introduction and Hardware Description

---

# 1

The NETGEAR® ProSAFE® 26-Port Fast Ethernet Smart Switch FS526Tv2 is a state-of-the-art, high-performance, IEEE-compliant network solution. To simplify installation, the switch is shipped ready for use out of the box.

The chapter covers the following topics:

- *Overview*
- *Switch Features*
- *Package Contents*
- *Front Panel*
- *Back Panel*
- *LEDs*
- *Product Label*
- *RJ-45 Ports*
- *Factory Defaults Button and Reset Button*

---

**Note:** For more information about the topics covered in this manual, visit the support website at [support.netgear.com](http://support.netgear.com).

---

---

**Note:** Firmware updates with new features and bug fixes are made available from time to time on [downloadcenter.netgear.com](http://downloadcenter.netgear.com). Some products can regularly check the site and download new firmware, or you can check for and download new firmware manually. If the features or behavior of your product do not match what is described in this guide, you might need to update your firmware.

---

## Overview

This hardware installation guide is for the NETGEAR ProSAFE 26-Port Fast Ethernet Smart Switch FS526Tv2. The switch provides twenty-four 10/100BASE-T ports and two 10/100/1000BASE-T ports.

You can make high-speed connections using the two Gigabit Ethernet ports. For example:

- Connecting switches to each other with high-speed links
- Connecting to a network backbone
- Linking to high-speed servers
- Providing 10/100/1000 copper connectivity

---

**Note:** In this guide, the NETGEAR ProSAFE 26-Port Fast Ethernet Smart Switch FS526Tv2 is referred as the switch.

---

The switch also provides the benefit of administrative management with a complete package of features to monitor, configure, and control the network. With the web management interface, you can view the switch's many features and use them in a simple and intuitive manner. The switch's management features include configuration for port and switch information, VLAN for traffic control, port trunking for increased bandwidth, and Class of Service (CoS) for traffic prioritization. Initial discovery of the switch on the network requires the Smart Control Center, a utility that runs on a computer.

You can use the switch freestanding or rack-mounted in a wiring closet or equipment room. The switch is IEEE-compliant and provides low latency for high-speed networking. All ports can automatically negotiate to the highest speed. This capability makes the switch well suited for environments that have a mix of Ethernet, Fast Ethernet, and Gigabit Ethernet devices. In addition, all RJ-45 ports operate in half- or full-duplex mode. The maximum segment length is 328 feet (100 meters) over a Category 5 twisted-pair cable.

You can use the switch as a desktop to build a small network that enables you to have 1000 Mbps access to a file server. With full duplex enabled, the switch port connected to the server or computer can provide 2000 Mbps throughput.

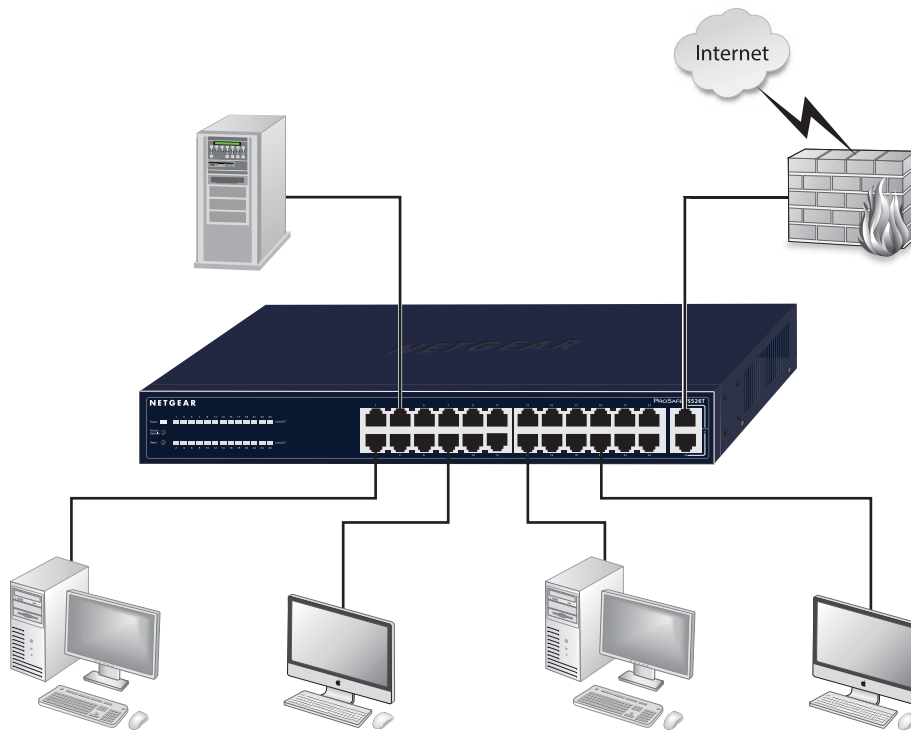


Figure 1. Example of a network configuration

## Switch Features

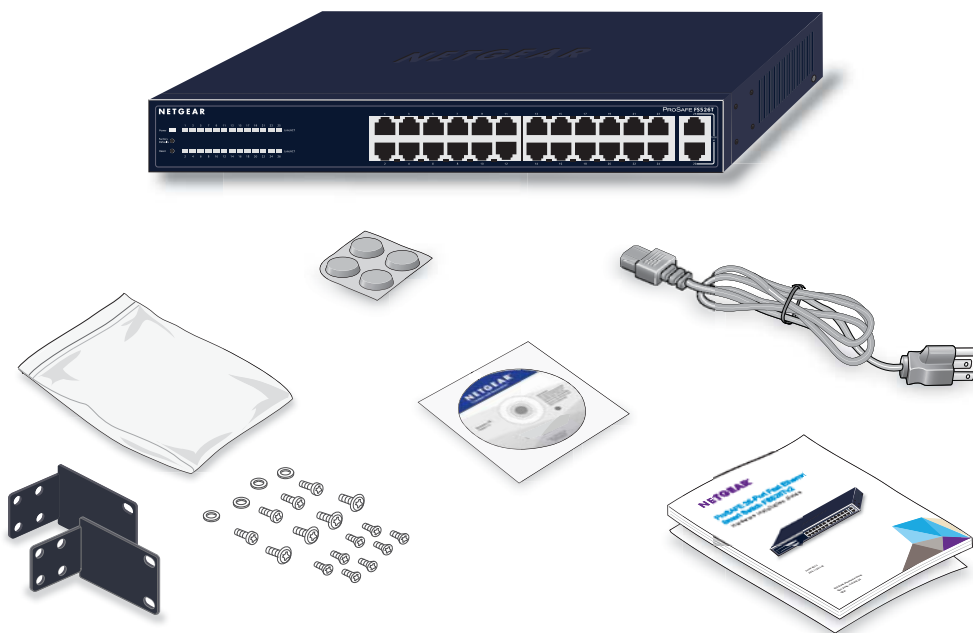
The following list identifies the key features of the switch:

- Twenty-four RJ-45 10/100 Mbps Fast Ethernet switching ports.
- Two RJ-45 10/100/1000 Mbps Gigabit Ethernet switch ports.
- The switch provides full compatibility with IEEE standards:
  - IEEE 802.3i (10BASE-T)
  - IEEE 802.3u (100BASE-TX)
  - IEEE 802.3x (full duplex-flow control)
  - IEEE 802.3ab (1000BASE-T)
  - IEEE 802.3az (EEE)
- Autosensing and autonegotiating capabilities for all ports.
- Auto MDI/MIDX technology is supported on all ports.
- Automatic address-learning function to build the packet-forwarding information table. The table contains up to 8 K Media Access Control (MAC) addresses.
- Full- and half-duplex functions for all ports.
- Store-and-forward transmission to remove corrupt packets from the network.
- Full-duplex IEEE 802.3x pause frame flow control.

- Active flow control to minimize packet loss and frame drops.
- Half-duplex back-pressure control.
- Per-port LEDs and system LEDs.
- Internal power supply.
- Standard 1U high, rack-mountable 13-inch chassis.
- No fans required.

## Package Contents

The following figure shows the package contents of the switch.



**Figure 2. Package contents**

Verify that the package contains the following:

- NETGEAR ProSAFE 26-Port Fast Ethernet Smart Switch FS526Tv2
- Rubber footpads for tabletop installation
- Power cord
- Rack-mount kit for installing the switch in a 19-inch rack
- Smart Switch resource CD with the Smart Control Center utility and a link to the online web management user guide.
- Installation guide
- Warranty support information card

If any of the parts are incorrect, missing, or damaged, contact your NETGEAR dealer. Keep the carton, including the original packing materials, in case you need to return the product for repair.

## Front Panel

The switch provides twenty-four 10/100BASE-T ports and two Gigabit Ethernet ports.

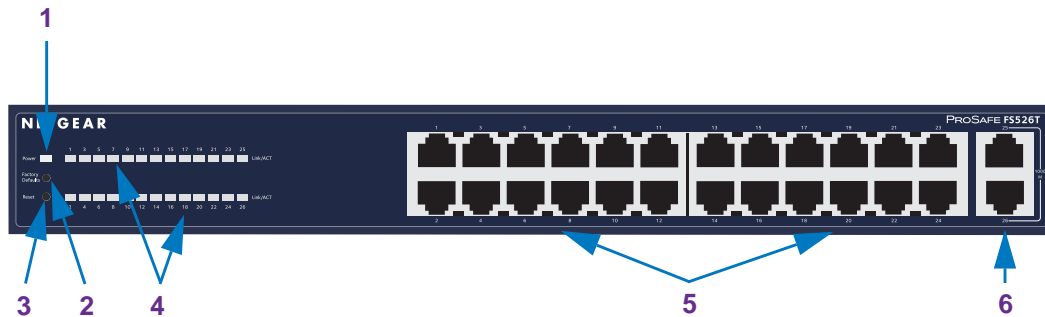


Figure 3. Front panel

The front panel contains the following:

1. Power LED
2. Recessed Factory Defaults button to restore the switch to the factory defaults
3. Recessed Reset button to reboot the switch
4. Twenty-six Link/ACT port LEDs
5. Twenty-four RJ-45 10/100BASE-T ports
6. Two RJ-45 Gigabit Ethernet uplink ports

## Back Panel

The back panel provides a cable security lock receptacle and a 100–240 VAC/50–60 Hz universal power inlet, which is a standard AC power receptacle that accommodates the supplied power cord.



Figure 4. Back panel



## LEDs

The following table describes the LEDs.

**Table 1. LED descriptions**

| Port   | LED      | Designation   |
|--|----------|---|
| (Not applicable, system LED)                           | Power    | <ul style="list-style-type: none"> <li>• <b>Off.</b> Power is disconnected.</li> <li>• <b>Solid green.</b> Power is supplied to the switch and the switch is operating normally.</li> </ul>   |
| Twenty-four 10/100BASE-T ports (one LED for each port) | Link/ACT | <ul style="list-style-type: none"> <li>• <b>Off.</b> No link is established on the port.</li> <li>• <b>Solid green.</b> A valid link (at any speed) is established on the port.</li> <li>• <b>Blinking green.</b> Packet transmission or reception occurs on the port.</li> </ul> |
| Two Gigabits Ethernet ports (one LED for each port)    | Link/ACT | <ul style="list-style-type: none"> <li>• <b>Off.</b> No link is established on the port.</li> <li>• <b>Solid green.</b> A valid link is established on the port.</li> <li>• <b>Blinking green.</b> Packet transmission or reception occurs on the port.</li> </ul>                |

## Product Label

The product label on the back panel of the switch shows the hardware model number and version, the software version, the unique MAC address, and the unique serial number. The following figure shows a generic product label.



**Figure 5. Generic product label**

## RJ-45 Ports

RJ-45 ports are autosensing and autonegotiating ports. When you insert a cable into an RJ-45 port, the switch automatically ascertains the maximum speed (10, 100, or 1000 Mbps) and duplex mode (half- or full-duplex) of the attached device. All ports support a twisted-pair cable that is terminated with an 8-pin RJ-45 plug.

To simplify the procedure for attaching devices, all RJ-45 ports support Auto MDI/MIDX. This technology enables you to attach devices to the RJ-45 ports with either straight-through or crossover cables. When you insert a cable into the switch's RJ-45 port, the switch automatically configures the RJ-45 port to enable communications with the attached device.

With Auto MDI/MIDX technology, you do not need to configure uplink connections, and you do not need to think about whether to use crossover or straight-through cables when you attach a device.

## Factory Defaults Button and Reset Button

The switch has a Factory Defaults button to clear the configuration and return the switch to the factory settings. Pressing the button for at least two seconds causes the switch to reboot with factory settings. All custom settings are removed, including the password, VLAN settings, and port configurations.

In addition, the switch has a Reset button. Pressing this button reboots the switch but does not change its configuration.

## 2. Installation

---

# 2

This chapter describes how to install the switch, which involves the steps that are described in the following sections:

- *Step 1: Prepare the Site*
- *Step 2: Install the Switch*
- *Step 3: Check the Installation*
- *Step 4: Connect Devices to the Switch*
- *Step 5: Apply AC Power*
- *Step 6: Manage the Switch through a Web Browser or through the Smart Control Center*

## Step 1: Prepare the Site

Before you install the switch, ensure that the operating environment meets the requirements in that are described the following table.

**Table 2. Site requirements**

| Characteristics | Requirements   |
|-----------------|--|
| Mounting        | <ul style="list-style-type: none"> <li>• <b>Desktop installations.</b> Provide a flat table or shelf surface.</li> <li>• <b>Rack-mount installations.</b> Use a 19-inch (48.3-centimeter) EIA standard equipment rack that is grounded and physically secure. You also need to use the rack-mount kit that is supplied with the switch.</li> </ul>   |
| Access          | Place the switch in a position that allows access to the RJ-45 ports on the front panel, that allows you to see the LEDs on the front panel, and that allows you easy and safe access to the power connector.  |
| Power source    | Provide a power source within 6 feet (1.8 meters) of the installation location. Power specifications for the switch are described in <a href="#">Appendix A, Physical and Technical Specifications</a> . Ensure that the AC outlet is not controlled by a wall switch, which can accidentally turn off power to the outlet and the switch.   |
| Environmental   | <ul style="list-style-type: none"> <li>• <b>Temperature.</b> Install the switch in a dry area, with ambient temperature between 0 and 50°C (32 and 122°F). Keep the switch away from heat sources such as direct sunlight, warm-air exhausts, hot-air vents, and heaters.</li> <li>• <b>Operating humidity.</b> The installation location should have a maximum relative humidity of 90%, noncondensing.</li> <li>• <b>Ventilation.</b> Do not restrict airflow by covering or obstructing air inlets on the sides of the switch. Keep at least 2 inches (5.08 centimeters) free on all sides for cooling. The room or wiring closet in which the switch is installed needs to have adequate airflow.</li> <li>• <b>Operating conditions.</b> Keep the switch at least 6 feet (1.83 meters) away from the nearest source of electromagnetic noise, such as a photocopy machine.</li> </ul> |

## Step 2: Install the Switch

You can install the switch on a flat surface or in a standard 19-inch rack.

### Install the Switch on a Flat Surface

The switch ships with four self-adhesive rubber footpads. Stick one rubber footpad on each of the four concave spaces on the bottom of the switch. The rubber footpads cushion the switch against shock and vibrations.

## Install the Switch in a Rack

To install the switch in a rack, you need the 19-inch rack-mount kit that is supplied with switch.

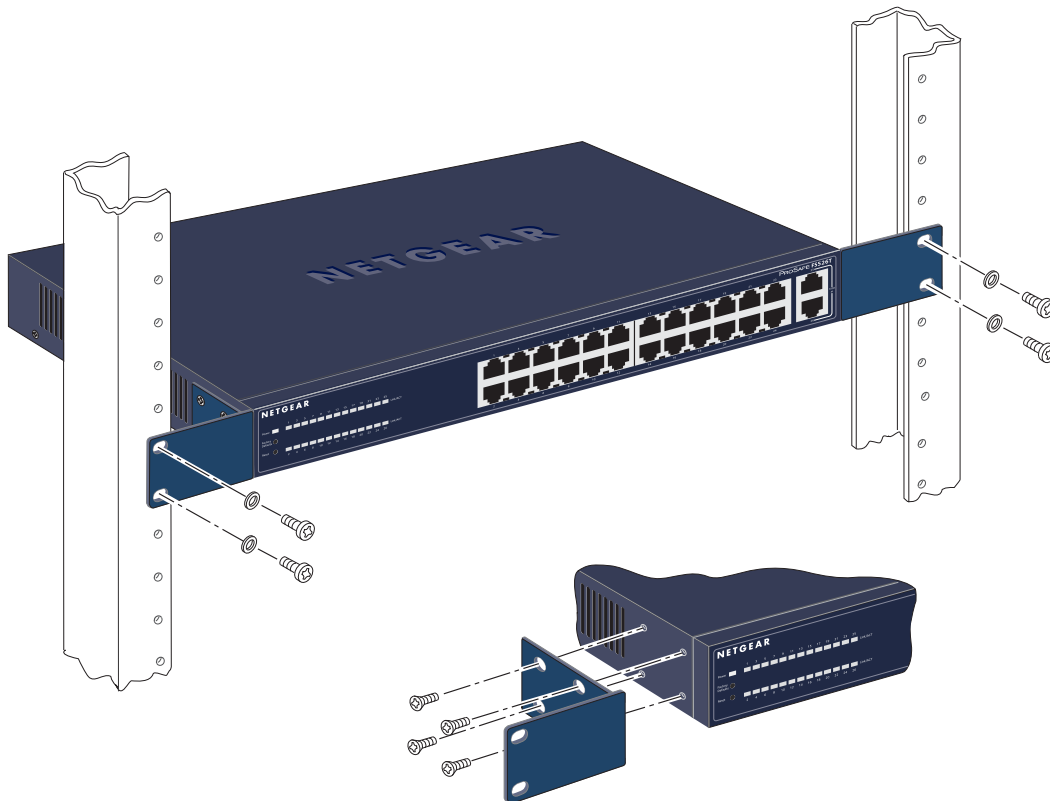
---

**Note:** To prevent the rack from overbalancing and toppling over, install devices from the bottom of the rack to the top.

---

➤ **To install the switch in a rack:**

1. Attach the supplied mounting brackets to the side of the switch.
2. Insert the screws provided in the rack-mount kit through each bracket and into the bracket mounting holes in the switch.
3. Tighten the screws with a No. 1 Phillips screwdriver to secure each bracket.
4. Align the mounting holes in the brackets with the holes in the rack, and insert two pan-head screws with nylon washers through each bracket and into the rack.



5. Tighten the screws with a No. 2 Phillips screwdriver to secure the switch in the rack.

## Step 3: Check the Installation

Before you apply power to the switch, do the following:

- Inspect the equipment thoroughly.
- Verify that all cables are installed correctly.
- Check cable routing to make sure that cables are not damaged or creating a safety hazard.
- Ensure that all equipment is mounted properly and securely.

## Step 4: Connect Devices to the Switch

The switch supports Auto MDI/MIDX technology, which allows you to attach devices using either straight-through or crossover cables.

---

**Note:** Ethernet specifications limit the cable length between the switch and an attached device to 100 meters (328 feet).

---

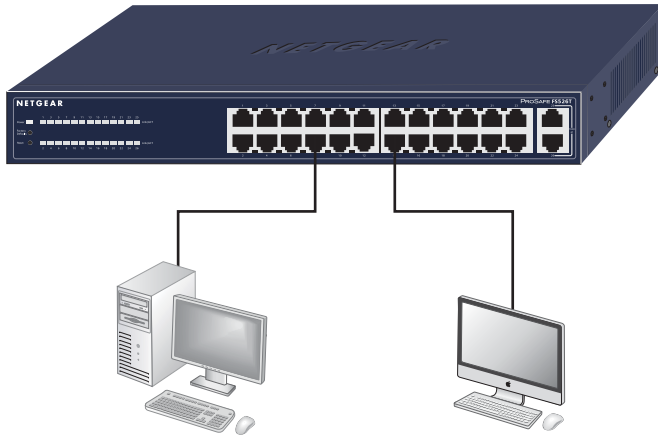


Figure 6. Connecting devices to ports on the front panel

- **To connect a computer to an RJ-45 network port on the front panel of the switch:**
1. Connect a Category 5 cable that is terminated with RJ-45 connectors to a computer.
  2. Connect the RJ-45 connector on the other side of the cable to an RJ-45 network port on the front panel of the switch.

## Step 5: Apply AC Power

The switch does not have an On/Off switch. You apply AC power to the switch by connecting the power cord, and you remove AC power from the switch by disconnecting the power cord.

Before you connect the power cord, select a grounded 3-pronged AC source that is not controlled by a wall switch, which could turn off power to the switch.

➤ **To apply AC power to the switch:**

1. Connect the female end of the supplied AC power adapter cable to the power receptacle on the back of the switch.
2. Connect the 3-pronged end of the AC power adapter cable to the 3-pronged AC source.

When you apply power, the Power LED on the front panel of the switch lights green. If the Power LED does not light, check that the power cable is plugged in correctly and that the power source is functioning correctly. If you cannot resolve the problem, see [Chapter 3, Troubleshooting](#).

## Step 6: Manage the Switch through a Web Browser or through the Smart Control Center

The switch contains management software that lets you view, change, and monitor the way the switch functions. The management software is not required for the switch to function. You can use the ports without using the management software. However, the management software lets you configure VLAN and trunking features, and lets you improve the efficiency of the switch, which results in the improvement of its overall performance as well as the performance of the network.

After you have powered up the switch for the first time, you can configure and manage the switch by using either a web browser or the Smart Control Center utility. For information about configuring and managing the switch, see the web management user guide.

---

**Note:** If the switch cannot connect to a DHCP server, the switch uses 192.168.0.239 as its default IP address and 255.255.255.0 as its default subnet mask.

---

---

**Note:** To access the web management interface, enter **password** as the default password.

---

## 3. Troubleshooting

---

# 3

This chapter describes how you can troubleshoot the switch. The chapter covers the following topics:

- *Troubleshooting Chart*
- *Troubleshooting Suggestions*



## Troubleshooting Chart

The following table lists symptoms, causes, and solutions of possible problems.

**Table 3. Troubleshooting chart**

| Symptom   | Cause   | Solution  |
|---|---|---|
| Power LED is off.   | No power is received.   | <ul style="list-style-type: none"> <li>Check the power cord connections for the switch at the switch and the connected device.</li> <li>Ensure that all cables are used correctly and comply with the Ethernet specifications.</li> </ul>   |
| Link/ACT LED is off or intermittent.  | Port connection is not working.   | <ul style="list-style-type: none"> <li>Check the crimp on the connectors and make sure that the plug is properly inserted and locked into the port at both the switch and the connecting device.</li> <li>Ensure that all cables are used correctly and comply with the Ethernet specifications.</li> <li>Check for a defective adapter card, cable, or port by testing them in an alternate environment where all products are functioning.</li> </ul> |
| File transfer is slow or performance is degraded.   | Half- or full-duplex setting on the switch and the connected device are not the same.         | Make sure that the attached device is configured to autonegotiate.  |
| A segment or device is not recognized as part of the network.                             | One or more devices are not properly connected, or cabling does not meet Ethernet guidelines. | <ul style="list-style-type: none"> <li>Verify that the cabling is correct.</li> <li>Ensure that all connectors are securely positioned in the required ports. Equipment might have been accidentally disconnected.</li> </ul>   |
| Link/ACT LED is blinking continuously on all connected ports and the network is disabled. | A network loop (redundant path) has been created.   | Break the loop by ensuring that there is only one path from any networked device to any other networked device.   |

## Troubleshooting Suggestions

If the suggestions in the previous table do not resolve the problem, see the troubleshooting suggestions in this section.

### Network Adapter Cards

Ensure that the network adapter cards that are installed in the computers are functioning correctly and that the latest software driver has been installed.

## Configuration

If problems occur after you alter the network configuration, restore the original connections and determine the problem by implementing the new changes, one step at a time. Ensure that cable distances, repeater limits, and other physical aspects of the installation do not exceed the Ethernet limitations.

## Switch Integrity

If necessary, verify the integrity of the switch by resetting the switch. To reset the switch, disconnect the AC power from the switch and then reconnect the AC power. If the problem continues, contact NETGEAR technical support:

- Phone (US & Canada only): 1-888-NETGEAR.
- Phone (Other Countries): Check the list of phone numbers at <http://support.netgear.com/general/contact/default.aspx>.

## Autonegotiation

The RJ-45 ports negotiate the correct duplex mode and speed if the device at the other end of the link supports autonegotiation. If the device does not support autonegotiation, the switch determines only the speed correctly, and the duplex mode defaults to half-duplex.

# A. Physical and Technical Specifications

---



This appendix provides the physical and technical specifications for the switch.

**Table 4. Physical and technical specifications**

| Feature                                   | Description   |
|---|---|
| Network protocols and supported standards | <ul style="list-style-type: none"><li>• IEEE 802.3i 10BASE-T</li><li>• IEEE 802.3u 100BASE-TX</li><li>• IEEE 802.3ab 1000BASE-T</li><li>• IEEE 802.3x flow control</li><li>• IEEE 802.1x</li><li>• IEEE 802.1D</li><li>• IEEE 802.3az (EEE)</li></ul> |
| Management                                | <ul style="list-style-type: none"><li>• IEEE 802.1Q static VLAN (up to 128, ranging from 2 to 4 K)</li><li>• IEEE 802.1p Class of Service (CoS)</li><li>• Port trunking with support for LACP</li></ul>   |
| Interfaces                                | <ul style="list-style-type: none"><li>• Twenty-four RJ-45 connectors for 10BASE-T and 100BASE-TX (Auto MDI/MIDX on all ports)</li><li>• Two RJ-45 connectors for 10BASE-T, 100BASE-TX, and 1000BASE-T (Auto MDI/MIDX on both ports)</li></ul>         |
| LEDs                                      | <ul style="list-style-type: none"><li>• Power LED for the switch</li><li>• Link/ACT (activity) LED for each port</li></ul>  |
| Performance                               | <ul style="list-style-type: none"><li>• Forwarding mode. Store-and-forward</li><li>• Bandwidth. 8.8 Gbps</li><li>• Address database size. 8 k Media Access Control (MAC) addresses</li></ul>  |
| Power supply                              | <ul style="list-style-type: none"><li>• Power consumption. 12W maximum</li><li>• Universal power input. 100–240 VAC/50–60 Hz</li></ul>  |
| Dimensions (H x W x D)                    | <ul style="list-style-type: none"><li>• 1.7 x 12.83 x 6.6 in.</li><li>• 43 x 326 x 168 mm</li></ul>   |
| Weight                                    | <ul style="list-style-type: none"><li>• 2.98 lb</li><li>• 1.35 kg</li></ul>   |

**Table 4. Physical and technical specifications (continued)**

| Feature                   | Description   |
|---------------------------|---|
| Environment               | <ul style="list-style-type: none"> <li>• Operating temperature. 0 to 50°C (32 to 122°F)</li> <li>• Storage temperature. –20 to 70°C (28 to 158°F)</li> <li>• Operating humidity. 10–90% maximum relative humidity, noncondensing</li> <li>• Storage humidity. 5–95% maximum relative humidity, noncondensing</li> <li>• Operating altitude. 3,000 m (10,000 ft) maximum</li> <li>• Storage altitude. 3,000 m (10,000 ft) maximum</li> </ul> |
| Electromagnetic emissions | <ul style="list-style-type: none"> <li>• CE mark, commercial</li> <li>• FCC Part 15 Class A</li> <li>• VCCI Class A</li> <li>• C-Tick</li> <li>• KCC</li> <li>• CAN ICES-3(A)/NMB-3(A)</li> </ul>   |
| Electromagnetic immunity  | EN 55022 (CISPR 22), Class A  |
| Safety                    | <ul style="list-style-type: none"> <li>• CE mark, commercial</li> <li>• UL / cUL / CE EN 60950-1</li> <li>• CB</li> </ul>   |

## Free Manuals Download Website

<http://myh66.com>

<http://usermanuals.us>

<http://www.somanuals.com>

<http://www.4manuals.cc>

<http://www.manual-lib.com>

<http://www.404manual.com>

<http://www.luxmanual.com>

<http://aubethermostatmanual.com>

Golf course search by state

<http://golfingnear.com>

Email search by domain

<http://emailbydomain.com>

Auto manuals search

<http://auto.somanuals.com>

TV manuals search

<http://tv.somanuals.com>