

NETGEAR® Installation Guide

Wireless USB Adapter MA111 v2

Start Here

Follow these instructions to set up your wireless adapter.

These basic setup instructions assume that you will connect to an access point, and you are not using WEP security. Please refer to the online help and the *Reference Manual* on the *Resource CD* for instructions on configuring WEP, Ad-Hoc mode, or advanced options.

Estimated Completion Time: 5-15 minutes.

For Windows XP computers

1 First, Install the MA111 Software

- Power on your PC, let the operating system boot up completely, and log in as needed.
- Insert the *Resource CD* into your CD-ROM drive. The CD main page shown below will load.



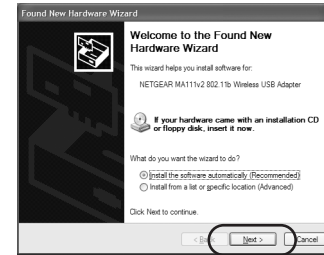
- Click the **Install Driver & Utility** link.
- Follow the InstallShield Wizard steps. Click **Finish** when done, and if prompted restart your computer.

2 Next, Install the MA111 Wireless USB Adapter

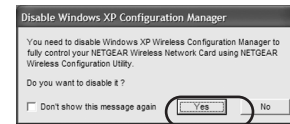
Note: You should have a USB port on your computer. Newer USB 2.0 ports will also work.

- Insert the MA111 into a USB slot. After a short delay, the Found New Hardware Wizard displays. Click **Next** to proceed.

Note: If a Windows XP logo testing warning appears, click **Continue Anyway** to proceed.



- Next, you will also be prompted to choose the country where you are located.



Click **Yes** to accept this option.

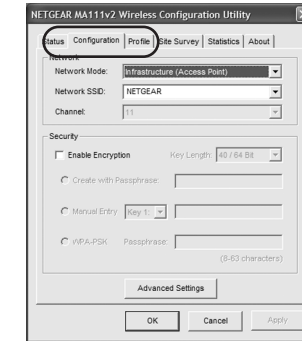
If you choose **No**, you must read the Windows XP documentation for an explanation of how to use the Windows XP wireless configuration utility.

You will also be prompted to choose the country you are located in. Select your location from the list.

- Click **Finish** to complete the installation. You will see the MA111 system tray icon (📶) on the lower right portion of the Windows task bar.

3 Now, Configure Your MA111 and Save the Profile

- Click the (📶) icon in the Windows system tray to open the MA111 Smart Wireless Settings Utility.



- The utility opens to the Status tab page.
- Click the Configuration tab page to change the wireless settings. Change the Network Name SSID to match your network.

Tip: To view the available wireless networks, use the drop-down list or the Site Survey tab and choose the one you want.

- Click **Apply** to activate the connection.

Tip: Click the Profile tab page for profile creation. Create work and home profiles. Then, activate whichever one you need for your current location.

Note: The Signal Strength and Link Quality indicators on the Status tab page report the status of your wireless connection.

4 Finally, Verify Wireless Network Connectivity

- Verify that the status monitor information at the bottom of the utility matches your wireless network.
- Check the color of the MA111 (📶) icon in the Windows system tray: green or yellow indicates a working connection; 📶 red indicates no connection.
- Check the MA111 LED: blinking means attempting to connect; solid indicates a good connection; off means the MA111 is not plugged in.
- Verify connectivity to the Internet or network resources.

Note: If you are unable to connect, see troubleshooting tips in the Basic Installation section of the *Reference Manual* on the *Resource CD*.

For Windows 2000, Me, or 98SE computers

1 First, Install the MA111 Software

- Power on your PC, let the operating system boot up completely, and log in as needed.
- Insert the *Resource CD* into your CD-ROM drive. The CD main page shown below will load.



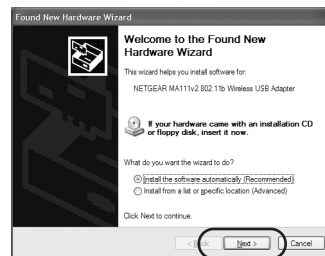
- Click the **Install Driver & Utility** link.
- Follow the InstallShield Wizard steps, click **Finish** when done, and if prompted, restart your computer.


2 Next, Install the MA111 Wireless USB Adapter

Note: You should have a USB port on your computer. Newer USB ports will also work.

- Insert the MA111 into a USB slot. After a short delay, the Found New Hardware Wizard displays. Click **Next** to proceed.

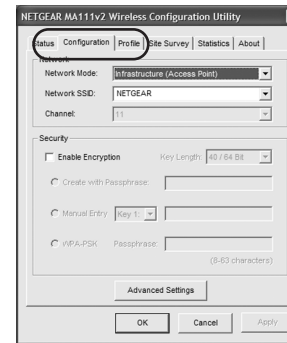
Note: If Windows 2000 displays a Digital Signature Not Found warning, click **Yes** to continue the installation.



- Follow the Found New Hardware Wizard steps, click **Finish** when done, and if prompted, restart your computer.
- Next, you will be prompted to choose the country where you are located. Select your location from the list.
- You will now see the MA111 system tray icon  in the lower right area of the Windows task bar.

3 Now, Configure Your MA111



- Open the MA111 Smart Wireless Settings Utility by clicking on the icon in the Windows system tray.



- The utility opens to the Status tab page.
- Click the Configuration tab page to change the wireless settings. Change the Network Name SSID to match your network.
Tip: To view the available wireless networks, use the drop-down list or the Site Survey tab and choose the one you want.
- Click **Apply** to activate the connection.
Tip: Click the Profile tab page for profile creation. Create work and home profiles. Then, activate whichever one you need for your current location.

Note: The Signal Strength and Link Quality indicators on the Status tab page report the status of your wireless connection.

4 Finally, Verify Wireless Network Connectivity

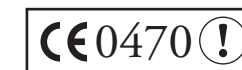
- Verify that the status monitor information at the bottom of the utility matches your wireless network.
- Check the color of the MA111 icon  in the Windows system tray: green or yellow indicates a working connection; red  indicates no connection.
- Check the MA111 LED: blinking means attempting to connect; solid indicates a good connection; off means the MA111 is not plugged in.
- Verify connectivity to the Internet or network resources.

Note: If you are unable to connect, see troubleshooting tips in the Basic Installation section of the *Reference Manual* on the *Resource CD*.

Technical Support

PLEASE REFER TO THE SUPPORT INFORMATION CARD THAT SHIPPED WITH YOUR PRODUCT.

By registering your product at www.NETGEAR.com/register, we can provide you with faster expert technical support and timely notices of product and software upgrades.



Attention: This device may be used throughout the European community. Some restrictions may apply in France and Italy.

©2004 NETGEAR, Inc. NETGEAR, the Netgear logo, Everybody's connecting, Auto Uplink and ProSafe are trademarks or registered trademarks of Netgear, Inc. in the United States and/or other countries. Microsoft and Windows are registered trademarks of Microsoft Corporation in the United States and/or other countries. Other brand and product names are trademarks or registered trademarks of their respective holders. Information is subject to change without notice. All rights reserved.



201-10167-01

May 2004

Free Manuals Download Website

<http://myh66.com>

<http://usermanuals.us>

<http://www.somanuals.com>

<http://www.4manuals.cc>

<http://www.manual-lib.com>

<http://www.404manual.com>

<http://www.luxmanual.com>

<http://aubethermostatmanual.com>

Golf course search by state

<http://golfingnear.com>

Email search by domain

<http://emailbydomain.com>

Auto manuals search

<http://auto.somanuals.com>

TV manuals search

<http://tv.somanuals.com>