

WG111T Wireless USB 2.0 Adapter

These basic setup instructions assume that you will connect to an access point, and you are not using WEP security. Please refer to the online help and the Reference Manual on your CD for instructions on configuring security, Ad-hoc mode, or advanced options.

Estimated Completion Time: 5-15 minutes for a notebook PC.

Place the USB Adapter Cradle

You can attach the WG111T Wireless USB 2.0 Adapter directly to a USB port on your computer, or use the USB cable to extend the range and obtain better wireless reception.

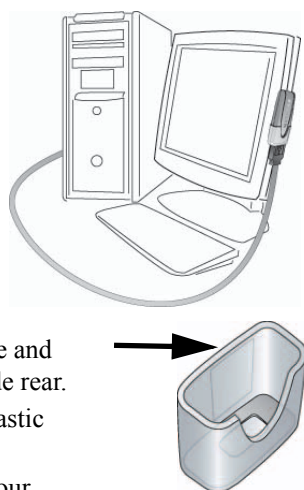
Follow these instructions to use the USB cable, plastic cradle, and velcro provided in the package for better USB Adapter placement on a notebook or desktop computer:

1. The WG111T Wireless USB 2.0 Adapter comes with 3 pieces of velcro. Locate the one that has a prickly side and attach it to the plastic cradle on the middle of the outside rear.
2. Insert the WG111T Wireless USB 2.0 Adapter in the plastic cradle.
3. Place one of the other pieces of velcro on the back of your notebook monitor near the top for better reception.

Note: The last piece of velcro can be placed on the side of your PC monitor nearest your wireless access point, if you are using the USB Adapter with a desktop PC.

4. Join the pieces of velcro to attach the USB Adapter in the plastic cradle to the notebook or desktop monitor.

See the installation instructions for your operating system before attaching the USB cable to the USB Adapter and your computer.



Windows XP

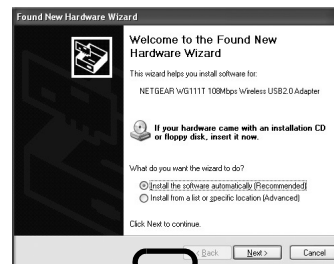
1. First, install the WG111T software.

- a. Power on your PC, let the operating system boot up completely, and log in as needed.
- b. Insert the Resource CD for the WG111T into your CD-ROM drive. The CD main page shown below will load.
- c. Click the **Install Driver & Utility** link.
- d. Follow the InstallShield Wizard steps. You will be prompted to choose the country you are located in.
- e. Click **Finish** when done. If prompted by a Found New Hardware Wizard to install a “bootloader device,” do so. Restart your computer, if prompted.



2. NEXT, INSERT THE WG111T WIRELESS USB 2.0 ADAPTER.

- a. Locate an available USB port on your PC. Connect the USB cable to the WG111T and insert the other end of the cable into the USB slot on your PC.
- b. After a short delay, the Found New Hardware Wizard displays. Select Install the software automatically (Recommended) and click Next.
- c. Next you will be prompted to enable the NETGEAR Smart Wireless Settings Utility configuration utility.



Note: If a Windows XP logo testing warning appears, click **Continue Anyway** to proceed.

Click **Yes** to accept this option.

If you choose No, you must read the Windows XP documentation for an explanation of how to use the Windows XP wireless network configuration utility.




Download from www.Somanuals.com. All Manuals Search And Download.

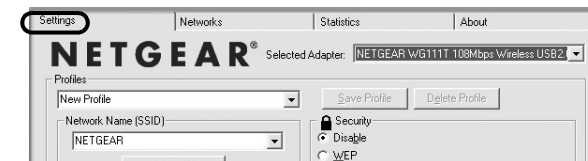
You will also be prompted to choose the country you are located in. Select your location from the list.

- d. Click **Finish** to complete the installation. You will see the WG111T system tray icon on the lower right portion of the Windows task bar.



3. NOW, CONFIGURE YOUR WG111T AND SAVE THE PROFILE.

- a. Click the  icon in the Windows system tray to open the WG111T Smart Wireless Settings Utility. The utility opens to the Settings tab page.
- b. Change the Network Name SSID to match your network.



- Tip:** To view the available wireless networks, use the drop-down list or the Networks tab and choose the one you want.
- c. Click **Apply** to activate the connection.
- Tip:** Create *work* and *home* profiles. Then, activate whichever one you need for your current location.

4. FINALLY, VERIFY WIRELESS NETWORK CONNECTIVITY.

- a. Verify that the status monitor information at the bottom of the utility matches your wireless network.
- b. Check the color of the WG111T icon in the Windows system tray: green or yellow indicates a working connection; red indicates no connection.
- c. Check the WG111T LED: blinking means attempting to connect; solid indicates a good connection; off means the WG111T is not plugged in.
- d. Verify connectivity to the Internet or network resources.

Note: If you are unable to connect, see the Troubleshooting chapter of the Reference Manual on the *NETGEAR 108 Mbps Wireless USB 2.0 Adapter WG111T Resource CD*.

Windows 2000

1. FIRST, INSTALL THE WG111T WIRELESS USB 2.0 ADAPTER SOFTWARE.

Note: Windows 2000 may require you to be logged on with administrator rights.

- Power on your PC, let the operating system boot up completely, and log in as needed.
- Insert the Resource CD for the WG111T into your CD-ROM drive. The CD main page shown below will load.
- Click the **Install Driver & Utility** link.
- Follow the InstallShield Wizard steps. You will be prompted to choose the country you are located in.
- Click **Finish** when done. If prompted by a Found New Hardware Wizard to install a “bootloader device,” do so. Restart your computer, if prompted.



2. NEXT, INSERT THE WG111T.

- Locate an available USB port on your PC. Connect the USB cable to the WG111T and insert the other end of the cable into the USB slot on your PC.
- After a short delay, the Found New Hardware Wizard displays. Select Install the software automatically (Recommended) and click Next.
- Follow the Found New Hardware Wizard steps, click **Finish** when done, and if prompted, restart your computer.



Note: If Windows 2000 displays a Digital Signature Not Found warning, click **Yes** to continue the installation.

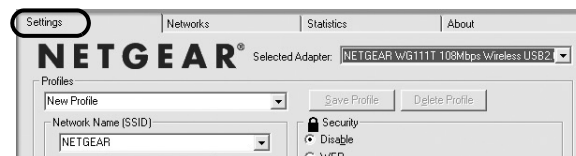
- Next, you will be prompted to choose the country where you are located. Select your location from the list.

You will now see the WG111T system tray icon in the lower right area of the Windows task bar.



3. NOW, CONFIGURE YOUR WG111T AND SAVE THE PROFILE.

- Open the WG111T Smart Wireless Settings Utility by clicking on the icon in the Windows system tray.



The utility opens to the Settings tab page.

- Change the Network Name SSID to match your network.

Tip: To view the available wireless networks, use the drop-down list or the Networks tab and choose the one you want.

- Click **Apply** to activate the connection.

Tip: Create *work* and *home* profiles. Then, activate whichever one you need for your current location.

Note: The status bar at the bottom of the utility reports the speed of your connection. 108 Mbps speed is only possible when your wireless network has a 108 Mbps access point such as in the NETGEAR WGT624 108 Mbps Wireless Firewall Router.

4. FINALLY, VERIFY WIRELESS NETWORK CONNECTIVITY.

- Verify that the status monitor information at the bottom of the utility matches your wireless network.
- Check the color of the WG111T icon in the Windows system tray: green or yellow indicates a working connection; red indicates no connection.
- Check the WG111T LED: blinking means attempting to connect; solid indicates a good connection; off means the WG111T is not plugged in.
- Verify connectivity to the Internet or network resources.

Note: If you are unable to connect, see the Troubleshooting chapter of the Reference Manual on the *NETGEAR 108 Mbps Wireless USB 2.0 Adapter WG111T Resource CD*.

Technical Support

PLEASE REFER TO THE SUPPORT INFORMATION CARD THAT SHIPPED WITH YOUR PRODUCT.

By registering your product at www.NETGEAR.com/register, we can provide you with timely expert technical support.

NETGEAR, INC. Support Information

Phone: 1-888-NETGEAR (For US & Canada only) - 24 x7 phone support. See Support Information card for other countries.

E-mail: support@NETGEAR.com - 24 x 7 online support.



Attention: This device may be used throughout the European Community, except restrictions apply in some regions of France. Please see the Reference Manual on the *NETGEAR 108 Mbps Wireless*

USB 2.0 Adapter WG111T Resource CD for details.

©2004 NETGEAR, Inc. NETGEAR, the Netgear logo and Everybody's connecting are trademarks or registered trademarks of Netgear, Inc. in the United States and/or other countries. Microsoft and Windows are registered trademarks of Microsoft Corporation in the United States and/or other countries. Other brand and product names are trademarks or registered trademarks of their respective holders. Information is subject to change without notice. All rights reserved.



201-10318-01

September 2004

Free Manuals Download Website

<http://myh66.com>

<http://usermanuals.us>

<http://www.somanuals.com>

<http://www.4manuals.cc>

<http://www.manual-lib.com>

<http://www.404manual.com>

<http://www.luxmanual.com>

<http://aubethermostatmanual.com>

Golf course search by state

<http://golfingnear.com>

Email search by domain

<http://emailbydomain.com>

Auto manuals search

<http://auto.somanuals.com>

TV manuals search

<http://tv.somanuals.com>