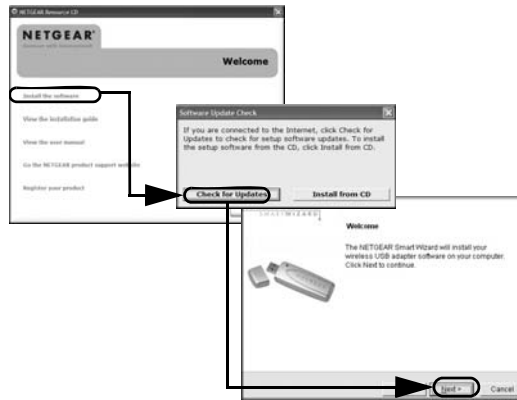


These setup instructions assume that you will connect to an access point or wireless router. Estimated completion time: 10 minutes.

## Installation

### 1. First, install the WG111v3 software.

Insert the NETGEAR CD. If the CD main page does not appear, double click **Autorun.exe** on the CD.



- Click **Install the Software**. The Check for Updates window opens.
- If you are connected to the Internet, click **Check for Updates**. If not, you can choose to install from the CD.
- When the Installation Complete message appears, click **Next**.
- On the SmartWizard screen, click **Next** to proceed with the SmartWizard setup.

### 2. Now, insert the wireless USB adapter.

- When prompted, insert your wireless USB adapter.
- Click **Next** to proceed. Windows will discover the adapter and continue the software installation process.
- Follow the Windows prompts to complete the software installation.



If a Windows logo certification warning appears, click **Continue** to proceed with the installation.

- When the Windows software installation is complete, click **Finish**.

### 3. Set up your wireless USB adapter.

- Windows 98SE, Me, or 2000 users go to step b. Windows XP or Vista users can set up the wireless adapter either with the NETGEAR Smart Wizard (recommended) or the Windows Configuration Utilities.



- NETGEAR Smart Wizard:** Reveals more information about each network and makes it easier to troubleshoot network connection problems.

- Windows Configuration Utilities:** See the Windows documentation or “Using Windows XP and Vista Wireless Configuration Utilities” at: <http://documentation.netgear.com/reference/enu/winzerocfg/index.htm>

- Click **Next** to accept the NETGEAR Smart Wizard. You will be prompted to let the wizard help you connect to a network (recommended).
- Click **Next** to accept.




### 4. Connect to a wireless network.

- Select the wireless network from the drop-down list, and the wizard records your choice.

**Note:** Hidden networks do not broadcast the Network Name (SSID). These networks are in the drop-down list, but the Network Name (SSID) is blank.



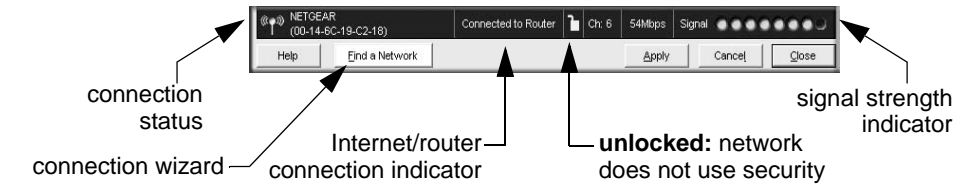
- The Smart Wizard will detect if the network uses security or not. Follow the Wizard steps for Security (if used) and for saving a Profile.
- After you have reviewed the settings, click **Finish**.



The WG111v3 icon  appears in the system tray and on the desktop, and the Settings page opens. The wizard initiates your wireless connection. It could take up to a minute for your wireless connection to be established.

Download from [www.Somanuals.com](http://www.Somanuals.com). All Manuals Search And Download.

## Verifying the Wireless Connection with the Status Bar

The status bar is located at the bottom of the Settings page.



- The connection status indicator  and the WG111v3 icon  show the status of the connection.
- For details about the icons in the status bar, the WG111v3 LEDs, and troubleshooting tips, see the *NETGEAR 54 Mbps Wireless USB 2.0 Adapter WG111 v3 User Manual* on the NETGEAR CD.
- The Internet/Router connection indicator shows the progress of your connection.



Connection Indicator	Description
Connected to Internet	Wireless Internet connection OK.
Connected to Router	Wireless connection to router OK but no Internet connection at router.
_____._____._____._____. or 169.254..x.x	Wireless connection to a router OK but problem with the router. See the online help or <i>User Manual</i> for troubleshooting tips.

## Placing the USB Adapter Cradle

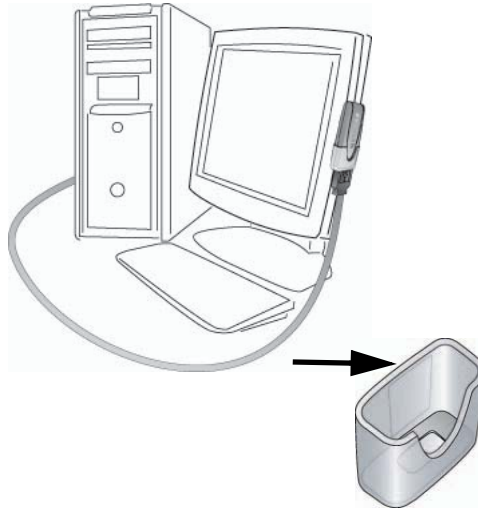
---

You can attach the WG111 Wireless USB 2.0 Adapter directly to a USB port on your computer, or use the USB cable to extend the range and obtain better wireless reception.

Follow these instructions to use the USB cable, plastic cradle, and loop and hook fastener provided in the package for better USB Adapter placement on a notebook computer:

1. The WG111 Wireless USB 2.0 Adapter comes with three black fasteners. Locate the one that has a prickly side and attach it to the plastic cradle on the middle of the outside rear.
2. Insert the WG111 Wireless USB 2.0 Adapter in the plastic cradle.
3. Place one of the other pieces of loop and hook fastener on the back of your monitor near the top for better reception.  
**Tip:** Place the last piece of fastener on the side of monitor nearest your wireless access point.
4. Join the pieces of the fastener to attach the USB Adapter in the plastic cradle to the notebook or desktop monitor.

See the installation instructions for your operating system before attaching the USB cable to the USB Adapter and your computer.



## Technical Support

---

Thank you for selecting NETGEAR products.

After completing the Smart Wizard configuration assistant, locate the serial number on the bottom label of your product and use it to register your product at <http://www.NETGEAR.com/register>.

Registration on the website or over the phone is required before you can use our telephone support service. The phone numbers for worldwide regional customer support centers are on the Warranty and Support Information card that came with your product.

Go to <http://kbserver.netgear.com> for product updates and Web support.



201-11025-01

April 20, 2007

Download from [Www.Somanuals.com](http://Www.Somanuals.com). All Manuals Search And Download.



This symbol was placed in accordance with the European Union Directive 2002/96 on the Waste Electrical and Electronic Equipment (the WEEE Directive). If disposed of within the European Union, this product should be treated and recycled in accordance with the laws of your jurisdiction implementing the WEEE Directive.

© 2007 by NETGEAR, Inc. All rights reserved. NETGEAR is a registered trademark of NETGEAR, Inc. in the United States and/or other countries. Other brand and product names are trademarks or registered trademarks of their respective holders. Information is subject to change without notice.

## Free Manuals Download Website

<http://myh66.com>

<http://usermanuals.us>

<http://www.somanuals.com>

<http://www.4manuals.cc>

<http://www.manual-lib.com>

<http://www.404manual.com>

<http://www.luxmanual.com>

<http://aubethermostatmanual.com>

Golf course search by state

<http://golfingnear.com>

Email search by domain

<http://emailbydomain.com>

Auto manuals search

<http://auto.somanuals.com>

TV manuals search

<http://tv.somanuals.com>