

## WG511v2 Wireless PC Card

### Follow These Quick Steps to Install Your WG511v2

These basic setup instructions assume that you will connect to a wireless access point or wireless router, and you are not using WEP security. Please refer to the online help and the Reference Manual on your CD for instructions on configuring WEP, Ad-hoc mode, or advanced options.

Estimated Completion Time: 5-15 minutes for each notebook PC.

## Windows XP Installation

### 1. First, install the WG511v2 software.

- Power on your notebook, let the operating system boot up completely, and log in as needed.
- Insert the Resource CD for the WG511v2 into your CD-ROM drive. The CD main page shown below will load.



- Click the **Install Driver & Utility** link.
- Follow the InstallShield Wizard steps, and click **Finish** when done to restart your computer.

### 2. NEXT, INSTALL THE WG511v2 WIRELESS PC CARD.

- Hold the PC Card with the NETGEAR logo facing up and insert it into a CardBus slot. After a short delay, the Found New Hardware Wizard displays.

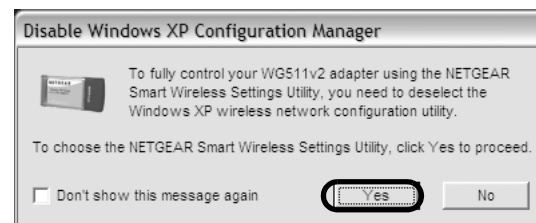


**Note:** If you have installed Windows XP Service Pack 2, click “Yes, this time only” or “Yes, now and every time I connect a device” to proceed.



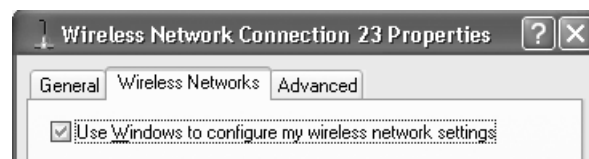
**Note:** If a Windows XP logo testing warning appears, click **Continue Anyway** to proceed.

- Next you will be prompted to enable the NETGEAR Smart Wireless Settings Utility configuration utility.



Click **Yes** to accept this option.

Or, choose **No** to enable Windows XP Zero configuration utility. You can switch between the utilities by going to Control Panel > Network Connections and clicking on your wireless network card. Click the Properties button and select the Wireless Networks tab. Check or clear the “Use Windows to configure my wireless network settings” check box.



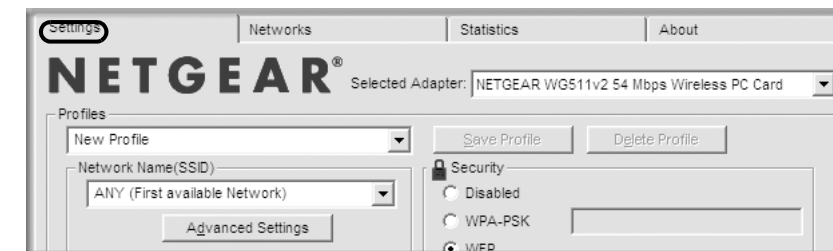
- You will also be prompted to choose the country you are located in. Select your location from the list.

- Click **Finish** to complete the installation. You will see the WG511v2 system tray icon on the lower right portion of the Windows task bar.



### 3. NOW, CONFIGURE YOUR WG511v2 AND SAVE THE PROFILE.

- Open the WG511v2 Smart Wireless Settings Utility by clicking on the icon in the Windows system tray.



The utility opens to the Settings tab page.

- Change the Network Name SSID to match your network.  
**Tip:** To view the available wireless networks, use the drop-down list or the Networks tab and choose the one you want.
- Click **Apply** to activate the connection.  
**Tip:** Create *work* and *home* profiles. Then, activate whichever one you need for your current location.

**Note:** The status bar at the bottom of the utility reports the speed of your connection. 54 Mbps speed is only possible when your wireless network has a 54 Mbps access point such as the NETGEAR WGR614 54 Mbps wireless router.

### 4. FINALLY, VERIFY WIRELESS NETWORK CONNECTIVITY.

- Verify that the status monitor information at the bottom of the utility matches your wireless network.
- Check the WG511v2 LEDs: Green (Link light): Blinking indicates the WG511 is trying to establish a connection but is unable to do so. Amber (Activity light): Blinking indicates the WG511v2 has a connection and is transmitting or receiving data.
- Verify connectivity to the Internet or network resources.

**Note:** If you are unable to connect, see the troubleshooting tips in the Installation chapter of the Reference Manual on the Resource CD.

# Windows 2000, ME/98SE Installation

## 1. FIRST, INSTALL THE WG511V2 SOFTWARE.

- Power on your notebook, let the operating system boot up completely, and log in as needed.
- Insert the Resource CD for the WG511v2 into your CD-ROM drive. The CD main page shown below will load.



- Click the **Install Driver & Utility** link.
- Follow the InstallShield Wizard steps, click **Finish** when done, and if prompted, restart your computer.

## 2. NEXT, INSTALL THE WG511V2 WIRELESS PC CARD.

- Hold the PC Card with the NETGEAR logo facing up and insert it into a CardBus slot. After a short delay, the Found New Hardware Wizard displays.

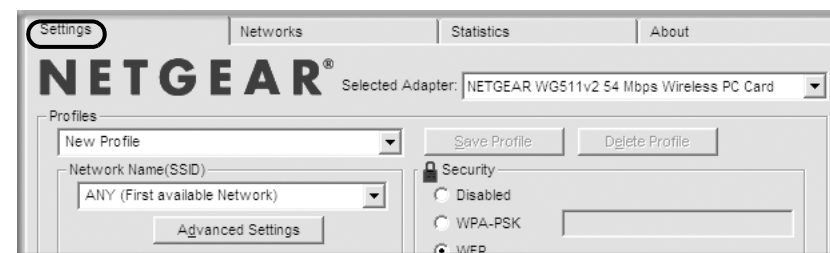


**Note:** If Windows 2000 displays a Digital Signature Not Found warning, click **Yes** to continue the installation.

- Follow the Found New Hardware Wizard steps, click **Finish** when done, and if prompted, restart your computer.
- Next, you will be prompted to choose the country where you are located. Select your location from the list.  
You will now see the WG511v2 system tray icon in the lower right area of the Windows task bar.

## 3. NOW, CONFIGURE YOUR WG511V2 AND SAVE THE PROFILE.

- Open the WG511v2 Smart Wireless Settings Utility by clicking on the icon in the Windows system tray.



The utility opens to the Settings tab page.

- Change the Network Name SSID to match your network.

**Tip:** To view the available wireless networks, use the drop-down list or the Networks tab and choose the one you want.

- Click **Apply** to activate the connection.

**Tip:** Create *work* and *home* profiles. Then, activate whichever one you need for your current location.

**Note:** The status bar at the bottom of the utility reports the speed of your connection. 54 Mbps speed is only possible when your wireless network has a 54 Mbps access point such as the NETGEAR WGR614 54 Mbps wireless router.

## 4. FINALLY, VERIFY WIRELESS NETWORK CONNECTIVITY.

- Verify that the status monitor information at the bottom of the utility matches your wireless network
- Check the WG511v2 LEDs: Green Link light—blinking indicates the WG511 is trying to establish a connection but is unable to do so; Amber Activity light—blinking indicates the WG511v2 has a connection and is transmitting or receiving data.
- Verify connectivity to the Internet or network resources.

**Note:** If you are unable to connect, see the troubleshooting tips in the Installation chapter of the Reference Manual on the Resource CD.

## Technical Support

PLEASE REFER TO THE SUPPORT INFORMATION CARD THAT SHIPPED WITH YOUR PRODUCT.

By registering your product at [www.NETGEAR.com/register](http://www.NETGEAR.com/register), we can provide you with timely expert technical support.

NETGEAR, INC. Support Information

Phone: 1-888-NETGEAR (For US & Canada only) - 24 x7 phone support. See Support Information card for other countries.

E-mail: [support@NETGEAR.com](mailto:support@NETGEAR.com) - 24 x 7 online support.



**Attention:** This device may be used throughout the European Community, except restrictions apply in some regions of France. Please see the Reference

Manual on the *NETGEAR 54 Mbps Wireless PC Card WG511v2 Resource CD* for details.

©2004 NETGEAR, Inc. NETGEAR, the Netgear logo and Everybody's connecting are trademarks or registered trademarks of Netgear, Inc. in the United States and/or other countries. Microsoft and Windows are registered trademarks of Microsoft Corporation in the United States and/or other countries. Other brand and product names are trademarks or registered trademarks of their respective holders. Information is subject to change without notice. All rights reserved.



201-10302-01

September 2004

## Free Manuals Download Website

<http://myh66.com>

<http://usermanuals.us>

<http://www.somanuals.com>

<http://www.4manuals.cc>

<http://www.manual-lib.com>

<http://www.404manual.com>

<http://www.luxmanual.com>

<http://aubethermostatmanual.com>

Golf course search by state

<http://golfingnear.com>

Email search by domain

<http://emailbydomain.com>

Auto manuals search

<http://auto.somanuals.com>

TV manuals search

<http://tv.somanuals.com>