

## RangeMax™ NEXT Wireless-N ExpressCard Adapter WN711

# Installation

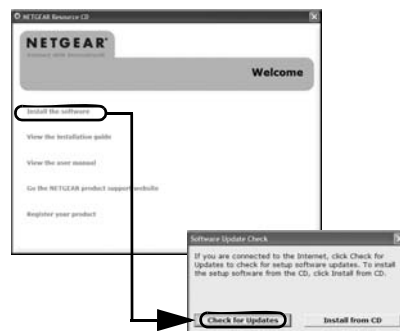
These setup instructions assume that you will connect to an access point or wireless router. Estimated completion time 10 minutes.

**Note:** The adapter is compatible with Microsoft Vista and Windows XP SP2 operating systems. Windows XP SP1 users must upgrade with a Microsoft Hot Fix KB822603 first.

### 1. First, install the WN711 software.

Insert the *Resource CD*. If the CD main page does not appear, double click **Autorun.exe** on the CD.

- Click **Install the Software**. The Check for Updates window opens.
- If you are connected to the Internet, click **Check for Updates**. If not, you can choose to install from the CD.
- Follow the onscreen instructions for the InstallShield wizard and the NETGEAR Smart Wizard.
  - For Windows XP if a Windows logo testing message appears, click **Continue Anyway**.
  - If a message that Windows Vista cannot verify the publisher of this driver appears, click **Install this driver software anyway**.
- When the NETGEAR Smart Wizard Installation Complete message appears, click **Next**.



### 2. Now, insert the Wireless ExpressCard.

- Locate an available ExpressCard slot in your computer.
- Insert the Wireless ExpressCard into the slot.
- For Windows XP computers, the Found New Hardware Wizard opens. Follow the wizard prompts.
- For Windows Vista the ExpressCard is automatically added with the installed driver.



### 3. Use the Smart Wizard to set up your Wireless ExpressCard.

- Set up the Wireless ExpressCard with the NETGEAR Smart Wizard (recommended) or the Windows configuration utilities.
  - NETGEAR Smart Wizard:** Reveals more information about each network and makes it easier to troubleshoot network connection problems.
  - Windows configuration utilities:** See the Windows documentation or “Using Windows XP and Vista Wireless Configuration Utilities” at: <http://documentation.netgear.com/reference/enu/winzerocfg/index.htm>



- Click **Next** to accept the Smart Wizard. You will be prompted to let the wizard help you connect to a network (recommended).
- Click **Next** to accept.



### 4. Connect to a wireless network.

The next screen that displays depends on whether there is a wireless router or access point at your location that supports Wi-Fi Protected Setup (WPS):




The wireless networks in your area do not support WPS.



One or more wireless networks with WPS are in your area.

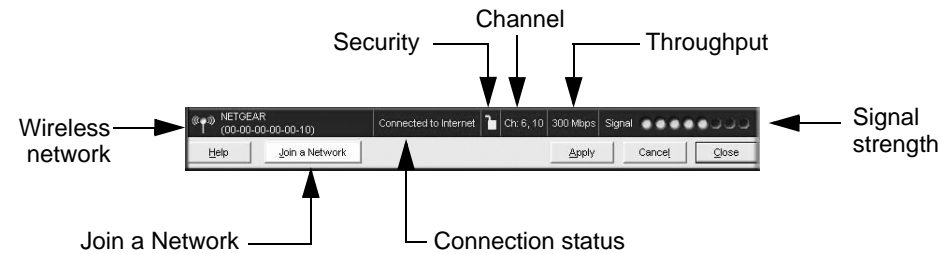
- Follow the instructions on the Connecting to your wireless network screen:
  - If there are no WPS networks, select a wireless network from the drop-down list, and the wizard records your choice.

**Note:** Hidden networks do not broadcast the Network Name (SSID). These networks are in the drop-down list, but the Network Name (SSID) is blank. If the network uses security, then the Smart Wizard detects it.
  - If you are using WPS, click **Next** to continue.
- WPS allows you to click a button or create a PIN number to securely connect to a wireless router or access point. Both the wireless adapter and the router or access point must support WPS. For more information about WPS, see the *NETGEAR RangeMax NEXT Wireless-N ExpressCard WN711 User Manual* on the *Resource CD*.
- Follow the Smart Wizard steps to connect to a network and to save a Profile.
- After you have reviewed the settings, click **Finish**.

The  icon appears in the system tray and on the desktop; and the Settings page opens. The wizard initiates your wireless connection. It could take up to a minute for your wireless connection to be established. Check the status bar as described in *Using the Status Bar* on the other side of this card.

## Using the Status Bar

The status bar is located at the bottom of the Settings screen.



### Understanding the Status Bar

Wireless network	Identifies which wireless network you have joined.
Security	<ul style="list-style-type: none"> <li>• Locked: security enabled.</li> <li>• Unlocked: security not enabled.</li> </ul>
Channel	The wireless channel used by the network. If many wireless networks in your area use the same channel they can interfere with one another.
Throughput	Wireless throughput measured in Mega bits per second. To optimize throughput, connect to a network with a high-speed router or access point, and a high-speed Internet connection.
Signal strength	More dots indicates a stronger signal. Usually, you will experience higher throughput when the signal is strongest.
Join a Network	Click <b>Join a Network</b> to open the Connection Wizard.
Connection status	Identifies the status of your network connection. <ul style="list-style-type: none"> <li>• <b>Connected to Internet:</b> Wireless Internet connection is OK.</li> <li>• <b>Connected to Router:</b> Wireless connection to the router is OK but the router is not connected to the Internet.</li> <li>• <b>169.254.x.x or _____.____.____.____ :</b> The wireless connection to the router is OK but there is a problem with the router. See the online help or the <i>NETGEAR RangeMax NEXT Wireless-N ExpressCard WN711 User Manual</i> on the <i>Resource CD</i>.</li> </ul>

## Technical Support

After completing the Smart Wizard configuration assistant, locate the serial number on the bottom label of your product and use it to register your product at <http://www.NETGEAR.com/register>.

Registration on the website or over the phone is required before you can use our telephone support service. The phone numbers for worldwide regional customer support centers are on the Warranty and Support Information card that came with your product.

Go to <http://www.NETGEAR.com/support> for product updates and Web support.



This symbol was placed in accordance with the European Union Directive 2002/96 on the Waste Electrical and Electronic Equipment (the WEEE Directive). If disposed of within the European Union, this product should be treated and recycled in accordance with the laws of your jurisdiction implementing the WEEE Directive.



201-11064-03

March 2008

## Free Manuals Download Website

<http://myh66.com>

<http://usermanuals.us>

<http://www.somanuals.com>

<http://www.4manuals.cc>

<http://www.manual-lib.com>

<http://www.404manual.com>

<http://www.luxmanual.com>

<http://aubethermostatmanual.com>

Golf course search by state

<http://golfingnear.com>

Email search by domain

<http://emailbydomain.com>

Auto manuals search

<http://auto.somanuals.com>

TV manuals search

<http://tv.somanuals.com>