

NETGEAR RangeMax™ Dual Band Wireless-N USB Adapter WND3100v2

Package Contents

- Wireless USB Adapter
- USB cable and cradle
- *Resource CD* (includes warranty and customer support information)
- *Installation Guide* (this guide)

Start Here

This Installation Guide will show you how to install the WND3100v2 adapter on your PC and connect your PC to a wireless network. Two connection methods are available:

- The **Express** method, presented here, uses the NETGEAR Smart Wizard to install and configure the adapter automatically and allow you to connect to your wireless network with Push 'N' Connect Security.
- The **Custom** method lets you choose your WND3100v2 installation options or select the Windows Utility to install and manage your wireless network. For details on **Custom** installation, see the *User Manual* on the *Resource CD*.

These setup instructions assume that you will connect to an access point or wireless router.

Estimated completion time: 10 minutes.

First, Install the WND3100v2 Software

1. Insert the *Resource CD*. If the CD main page does not display, browse the files on the CD and double-click *Autorun.exe*.
2. Click **Install the Software**. The Software Update Check screen displays.
3. If you are connected to the Internet, click **Check for Updates**. If not, click **Install from CD**.
4. The NETGEAR Smart Wizard Welcome screen displays. Click **Next**. Select **I Agree** and then click **Next** to accept the licensing agreement.

5. In the Setup Type screen, leave the **Express (Recommended)** radio button selected. **Express** automatically detects and configures your program features, allowing for a faster setup.



6. Click **Next**.
 - For Windows XP, if a Windows logo testing message appears, click **Continue Anyway**.
 - If a message that Windows Vista cannot verify the publisher of this driver displays, click **Install this driver software anyway**. You will be prompted to insert your wireless USB adapter.

Then, Insert the Wireless USB Adapter and Connect to a Wireless Network

Express will install the WND3100v2 software and your program features will be configured automatically. You will be prompted to connect your adapter.

1. Locate an available USB port on your PC.
2. Insert the wireless adapter into the USB port. You can attach the wireless USB adapter directly or use the USB cable (see “Affixing the USB Adapter Cradle” on the other side of this guide).
3. Depending on which Windows operating system you are using, do one of the following:



- **Windows Vista.** The adapter and driver are automatically added. If a message that Windows Vista cannot verify the publisher of this driver displays, click **Install this driver software anyway**.
 - **Windows XP.** Follow the onscreen instructions for the Found New Hardware Wizard.
 - If a Windows logo testing message appears, click **Continue Anyway**.
 - When the Found New Hardware Wizard is complete, click **Finish**.
4. On the NETGEAR Smart Wizard screen, click **Next** to proceed.

5. You will be prompted to connect to a wireless network:

- If you have a wireless router or access point that supports Push 'N' Connect (NETGEAR's Wi-Fi Protected Setup), then you will be prompted by the first screen. Leave the **Yes...** radio button selected and click **Next** to continue. Follow the Smart Wizard steps to connect using WPS (Wi-Fi Protected Setup).

Note: You can choose to bypass Push 'N' Connect by selecting **No, I do not want to use Push 'N' Connect** and click **Next**.

- If no WPS-capable devices are detected, you will be prompted by the second screen. Select your wireless network name from the list of wireless networks and click **Next** to continue. If you select a secured network, the Smart Wizard will detect it and you will be prompted to enter your passphrase.




WPS-capable networks in your area



No WPS-capable networks in your area

The adapter will initiate your connection. It can take up to a minute or two to complete the connection. You are now connected to a wireless network!

6. On the Connecting to your wireless network screen, fill in the **<Enter a Profile Name Here>** field; the default name is Profile. After you have reviewed the settings, click **Finish**.

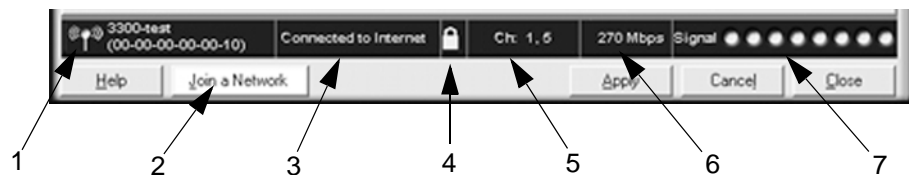
The WND3100v2 icon  appears in the system tray and on the desktop so you can access the Smart Wizard screen if you want to make any changes or connect to a different wireless network.

The Smart Wizard screen displays showing your connection details.



The default profile name is Profile.

The Status Bar at the bottom of the Smart Wizard screen displays important details about your wireless connection.



Understanding the Status Bar	
1. Wireless network	Identifies which wireless network you have joined.
2. Join a Network	Click Join a Network to start the Connection Wizard. You can then select a different wireless network or reconnect to your current network, should you become disconnected.
3. Connection status	The status of your network connection. <ul style="list-style-type: none"> • Connected to Internet. You are wirelessly connected to the Internet. • Connected to Router. You are wirelessly connected to the router, but the router is not connected to the Internet. • 169.254.x.x or _____. The wireless connection to the router is OK, but there is a problem with the router. See the <i>User Manual</i> on the <i>Resource CD</i>.

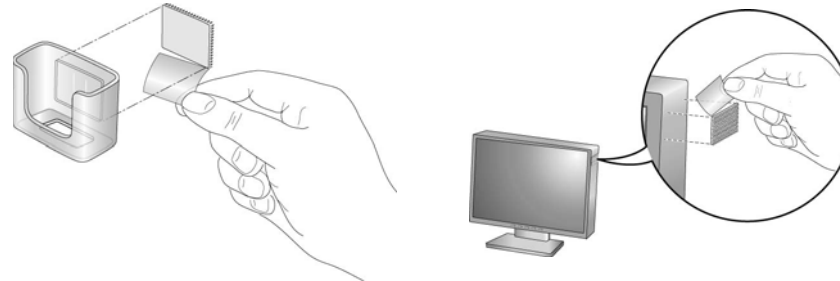
Understanding the Status Bar	
4. Security	<ul style="list-style-type: none"> • A closed lock indicates that security is enabled. • An open lock indicates an open network without wireless security.
5. Channel	The wireless channel used by the network. If many wireless networks in your area use the same channel, they can interfere with one another. You might want to switch to another channel.
6. Data rate	Wireless data rate measured in Megabits per second. To optimize wireless data rate, connect to a network with a high-speed router or access point and a high-speed Internet connection.
7. Signal strength	More dots indicates a stronger signal. Usually, you experience higher throughput when the signal is strongest.

For information about all settings available for your wireless adapter, refer to the *User Manual* on the *Resource CD*.

Affixing the USB Adapter Cradle

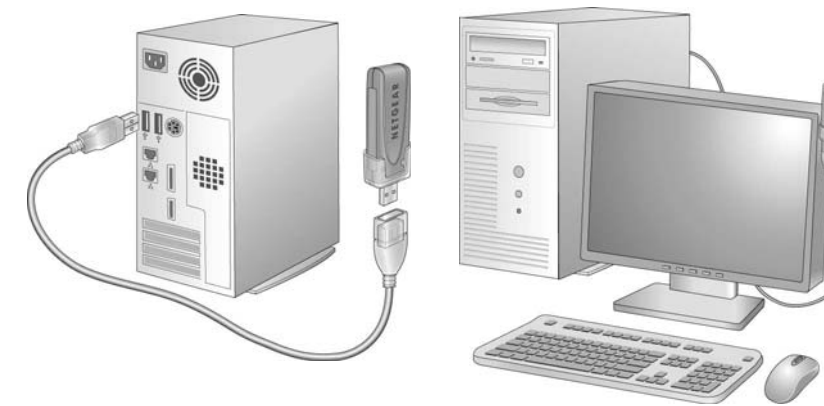
You can use the USB cable and adapter cradle to extend the range of your adapter and obtain better wireless reception. Follow the instructions to attach the USB cable, plastic cradle, and loop-and-hook fasteners to a computer monitor.

1. Attach the prickly side of one fastener to the middle back of the plastic cradle.
2. Attach the smooth side of the fastener to the side of your monitor, near the top for better reception.



3. Insert the adapter in the plastic cradle and attach the USB cable to the adapter and the computer.

4. Attach the cradle with the adapter to the side of the PC monitor where you placed the fastener.



Technical Support

Thank you for selecting NETGEAR products.

After installing your device, locate the serial number on the label of your product and use it to register your product at <http://www.NETGEAR.com/register>. Registration is required before you can use our telephone support service. Registration via our website is strongly recommended.

Go to <http://kbserver.netgear.com> for product updates and Web support.



This symbol was placed in accordance with the European Union Directive 2002/96 on the Waste Electrical and Electronic Equipment (the WEEE Directive). If disposed of within the European Union, this product should be treated and recycled in accordance with the laws of your jurisdiction implementing the WEEE Directive.

© 2009 by NETGEAR, Inc. All rights reserved. NETGEAR and the NETGEAR logo are registered trademarks of NETGEAR, Inc. in the United States and/or other countries. Other brand and product names are trademarks or registered trademarks of their respective holders. Information is subject to change without notice.



201-11443-02



May 2009

Free Manuals Download Website

<http://myh66.com>

<http://usermanuals.us>

<http://www.somanuals.com>

<http://www.4manuals.cc>

<http://www.manual-lib.com>

<http://www.404manual.com>

<http://www.luxmanual.com>

<http://aubethermostatmanual.com>

Golf course search by state

<http://golfingnear.com>

Email search by domain

<http://emailbydomain.com>

Auto manuals search

<http://auto.somanuals.com>

TV manuals search

<http://tv.somanuals.com>