

# NETGEAR®

Connect with Innovation™

## Powerline Music Extender (XAU2511) Installation Guide

Compatible with Airplay®

- Play music from tablet, smartphone or computer on your stereo system
- Extend a home network and USB connection to any power outlet

XAU2511 and XAV1601 included.  
Other devices shown not included.

## Technical Support

Thank you for selecting NETGEAR products.

After installing your device, locate the serial number on the label of your product and use it to register your product at

<https://mynetgear.com>. You must register your product before you can use NETGEAR telephone support. NETGEAR recommends registering your product through the NETGEAR web site.

Phone (US & Canada only): 1-888-NETGEAR

Phone (Other Countries):

See [http://support.netgear.com/app/answers/detail/a\\_id/984](http://support.netgear.com/app/answers/detail/a_id/984).

## Trademarks

NETGEAR, the NETGEAR logo, and Connect with Innovation are trademarks and/or registered trademarks of NETGEAR, Inc. and/or its subsidiaries in the United States and/or other countries. Information is subject to change without notice. Other brand and product names are registered trademarks or trademarks of their respective holders. © 2012 NETGEAR, Inc. All rights reserved.

## Statement of Conditions

In the interest of improving internal design, operational function, and/or reliability, NETGEAR reserves the right to make changes to the products described in this document without notice. NETGEAR does not assume any liability that may occur due to the use or application of the product(s) or circuit layout(s) described herein.

# Contents

Package Contents .....	2
Hardware Features .....	3
Powerline Adapter Setup .....	4
Powerline Music Extender Features .....	6
Play Music Anywhere Features .....	7
Networking Features .....	8
Extend Internet and Home Network to Any Outlet .....	9
Set Up ReadySHARE USB Storage .....	20
Advanced Setup .....	22
LED Descriptions .....	23
Button Descriptions .....	24

# Package Contents



**XAU2511  
Powerline  
Adapter**



**USB to Audio  
cable**

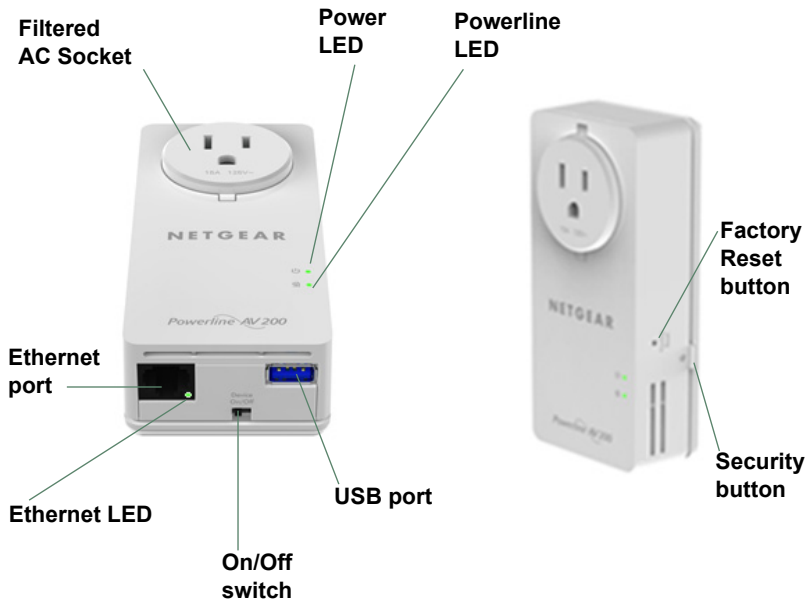


**Ethernet cable**

**Products sold in some  
locations have a  
Resource CD.**

**Note:** NETGEAR recommends that you do *not* plug a Powerline adapter directly into a power strip. See [Advanced Setup](#) on page 22 for instructions.

# Hardware Features



# Powerline Adapter Setup

Make sure that the new XAU2511 adapter and your existing adapters are on the same security key so they can work together:

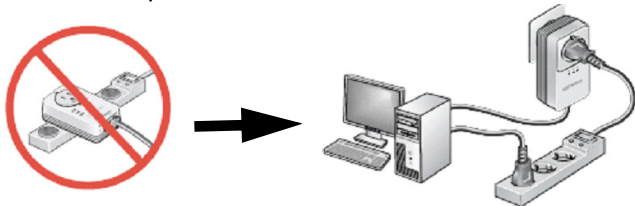
1. Plug the XAU2511 into a power outlet.
2. When the Power LED lights, press the **Security** button for 2 seconds until the Power LED starts to blink.
3. On one of your existing Powerline adapters, press the **Security** button for 2 seconds until the Power LED starts to blink.

When the Power LED stops blinking, the two devices are connected and paired on the same network key.



## Troubleshooting

If the Powerline LED is not green, plug the Powerline adapter into the wall power outlet. If there is a power strip, plug the power strip into the Powerline adapter socket.



After you finish plugging in the adapter and if the Powerline LED is off or red, place the Powerline adapter into another AC wall outlet.

**Note:** See [LED Descriptions](#) on page 23 for a description of the LEDs

# Powerline Music Extender Features

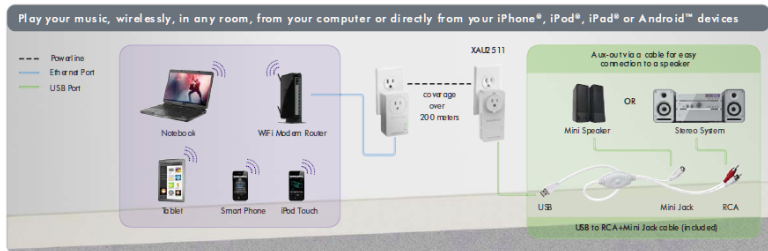
The Powerline Music Extender provides music and networking features. The Play Music Anywhere features let you play music wirelessly. The networking features let you connect USB storage devices and USB printer/scanners to your home network.





## Play Music Anywhere Features

The Play Music Anywhere features are ReadySHARE AirMusic and ReadySHARE Music.



### ***ReadySHARE AirMusic***

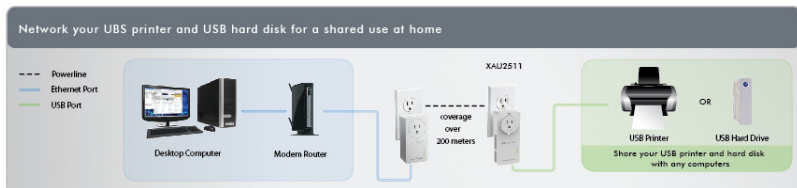
ReadySHARE AirMusic lets you play music wirelessly from your iPhone, iPad, iPod touch, or Android devices. The music is played on audio speakers, such as USB speakers or a Hi-Fi stereo system. NETGEAR supports all types of stereo speaker because it has a USB to RCA + 3.5 mm Mini jack cable (included).

### ***ReadySHARE Music***

ReadySHARE Music lets you play music from your computer on a remote audio speaker, such as USB speakers or a Hi-Fi system.

## Networking Features

The networking features let you connect any USB printer and USB hard drive to your home network so they can be accessed through WiFi. The XAU2511 adapter shares the USB devices for remote access with other users or computers anywhere in the home. The networking features are ReadySHARE Printer and ReadySHARE USB Storage access.



### ***ReadySHARE Printer***

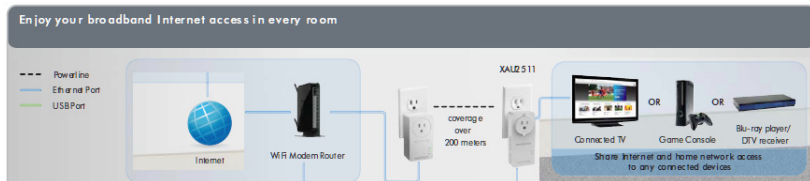
ReadySHARE Printer lets you place your USB printer anywhere in your house. When you connect the USB printer to the XAU2511 USB port, the printer is shared among all computers on the home network.

### ***ReadySHARE USB Storage***

ReadySHARE USB Storage lets you share the content on a hard disk or memory stick across your home network. All you do is connect the hard disk or memory stick to the XAU2511 USB port.

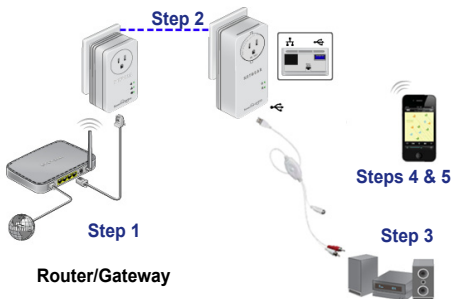
## Extend Internet and Home Network to Any Outlet

The Powerline Music Extender uses an Ethernet port to convert a standard electrical wall outlet into a high-speed network connection. The high-speed network connection brings Internet connectivity to any device with an Ethernet port, such as a game console, Blu-ray™ player, smart TV, HD set-top box, network DVR, or computer. All devices on your home network that are plugged into a Powerline adapter are interoperable.



## Set up ReadySHARE AirMusic

ReadySHARE AirMusic is for smart phones and tablets. This setup procedure only works if you have a WiFi network at home that comes from a WiFi router, gateway, or extender.



1. Plug the Powerline Music Extender into any electrical outlet in your home.
2. Connect the XAU2511 to your stereo system with the mini jack connector or the RCA connectors.
3. Select the WiFi router/gateway network SSID on your smart phone or tablet.
4. Select music on your smart phone or tablet and beam it to the speaker by way of the Airplay feature.

**Note:** Make sure that the smart phone or tablet is connected to the WiFi network of the Router/Gateway that is connected to the XAV1601 Powerline adapter.

**For iOS devices** (such as an iPhone, iPad, or iPod):

1. Launch the music application (for example, iPod).
2. Click the arrow on the right side of the screen.
3. Select **XAU2511-XX** in the devices list.

You should hear the XAU2511 play music on the remote speaker.



**For Android devices** (such as a smart phone or tablet):

You can also play music on the NETGEAR Powerline Music Extender through specific Airplay-compatible applications running on an Android OS.

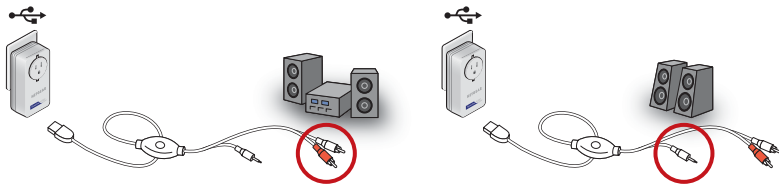
1. Launch the Google Play app (previously Android Market).

2. Download a free Airplay application and launch it. Twonky Mobile is recommended.
3. Select the music source.
4. Choose a song and play it.
5. Once the music plays, press the **Beam** button and select **XAU2511**.

Music plays on your remote speaker through the XAU2511.

## ***Use the USB to Audio Cable***

Depending on the speaker you want to use, you can connect a USB speaker directly into the XAU2511 or use the USB to Audio cable.



Use the two RCA connectors to connect a Hi-Fi audio system with RCA aux-in connectors.



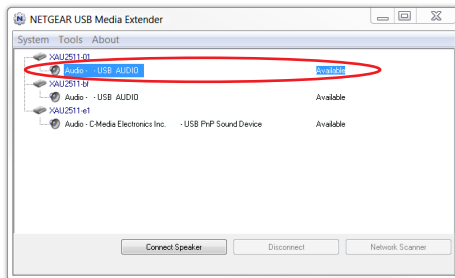
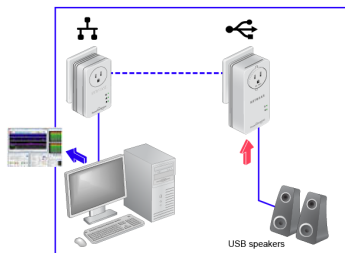
Or, use the 3.5 mm mini jack to connect a speaker with the mini jack connector.



# Set up ReadySHARE Music on Computers

## First Installation

1. Plug the speaker into the XAU2511.

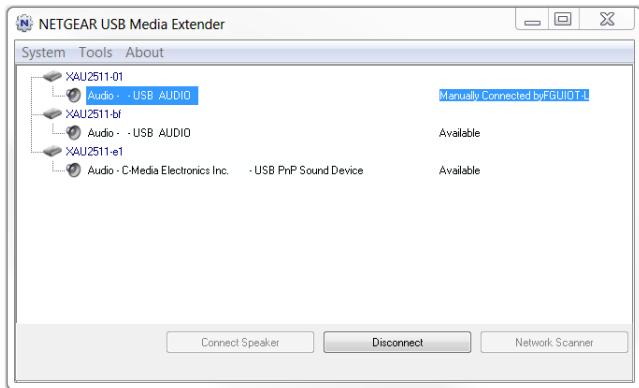


2. Insert the CD-ROM into your computer.
3. Install the NETGEAR USB Media Extender utility that is available on the CD-ROM.
4. Launch the utility. After 30 seconds, it finds and displays the remote XAU2511 devices on your home network.
5. Select the XAU2511 device to which you want to stream the music by selecting the line below the corresponding XAU2511-XX device. See figure in **Step 1**.

You can identify the device by its AirMusic name, which is shown on the product label on the back of the XAU2511 adapter.



- Click the **Connect** button. The music played on the computer is played on the remote audio system.
- To stop playing the music on the XAU2511 device, select the **Disconnect** button as shown in the figure.



## After the First Installation

The NETGEAR USB Media Extender utility is always running in the background. To display the utility on the screen, click the icon on the Windows tray. To play music remotely, select the XAU2511-XX and connect to it.

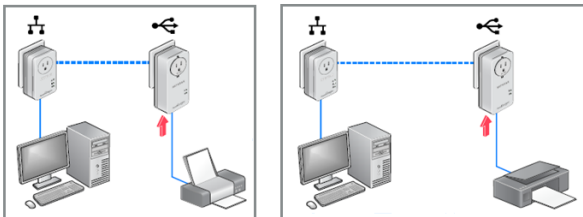
## Troubleshooting

- It takes between 30 seconds to 1 minute to detect the remote XAU2511 the first time.
- If after pressing the **Connect** button the music is not played remotely, press the **Disconnect** button and press the **Connect** button again.
- No other device (for example, a smart phone or tablet) can use the XAU2511 in AirMusic mode unless you press the **Disconnect** button in the utility on the computer.
- All of the music and Windows sounds that come from the computer are redirected and played remotely on the XAU2511. To play only the music without the Windows sounds, launch an Airplay application such as iTunes on your computer.

## Set up ReadySHARE Printer

You can have multiple printers or scanners working simultaneously if each USB printer/scanner is connected to an XAU2511 adapter.

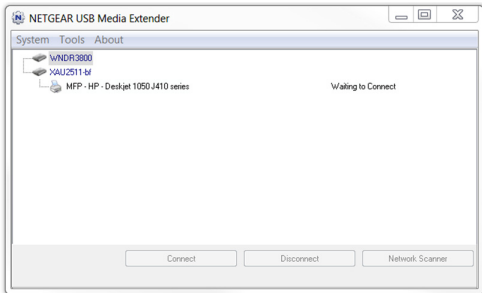
1. Connect the USB printer or scanner/fax to the USB port on the XAU2511.



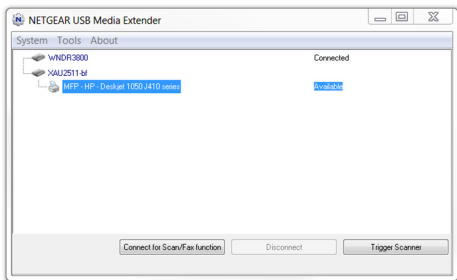
2. Install the NETGEAR USB Media Extender utility and launch the application.

The utility is available on the CD-ROM.

3. After a few seconds, the USB Media Extender utility shows that the XAU2511-XX detected the printer/scanner/fax and is waiting for the connection.



- Click the printer/scanner device listing and press the **Connect for Scan/Fax function** button.



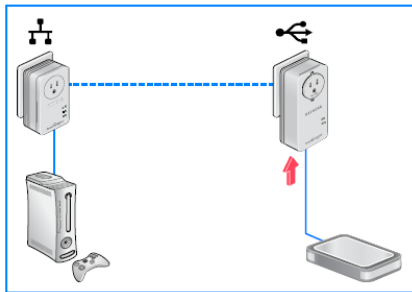
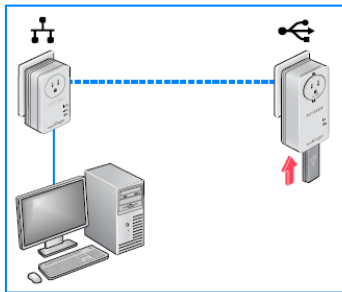
Your remote printer/scanner/fax is now connected as if it was connected locally through the USB cable. To print or scan, open the application (such as, Word or Excel), select the Print function and select the printer.

## Troubleshooting

If the remote printer/scanner is not detected, make sure that you have already installed the printer/scanner software on the computer where you want to print. The printer/scanner driver must be installed on the computer first.

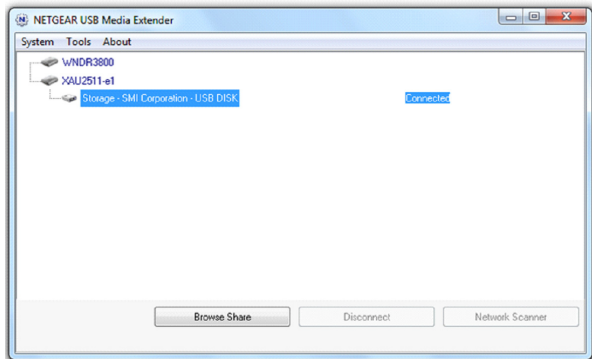
# Set Up ReadySHARE USB Storage

1. Connect any storage device to the USB port of the XAU2511. For example, you could connect a USB hard drive or a USB memory stick.



2. Install the NETGEAR USB Media Extender utility and launch the application.  
The utility is available on the CD-ROM.

3. After a few seconds, the USB Media Extender utility shows that the storage device is connected to the XAU2511-XX.



4. Select the storage device and press the **Browse Share** button. A window displays that lets you browse the remote storage device directories.

## Troubleshooting

If you use a USB Hub to connect different USB hard drives simultaneously, the power on the USB port of XAU2511 might not be sufficient to power on all of the USB devices. You might need to power on some hard disks with an external power supply.

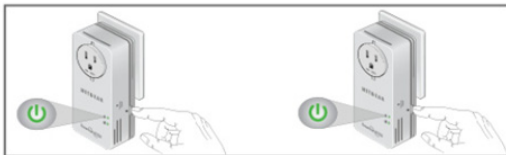
## Advanced Setup

Use Advanced Setup to secure the Powerline network.

1. Plug the Powerline adapters into AC wall outlets.
2. Make sure that the Powerline LEDs on each adapter are lit. When the LEDs are lit, it means that the adapters are associated with each other and connected to the network.



3. On each adapter, press the **Security** button for 2 seconds and then release.







After a few seconds, the Power LED stops blinking and turns back on. The two devices are now connected and paired on a secure random key.



## LED Descriptions

The LEDs indicate the status of your Powerline adapters.

- When you plug in the adapter, the Power LED  lights up and turns green.
- The Powerline LED lights up when the adapter detects at least one other compatible Powerline device.
- The Pick A Plug feature lets you pick the electrical outlet with the strongest link rate.
  -  Green: Link rate > 80 Mbps (Best)
  -  Amber: Link rate > 50 and < 80 Mbps (Better)
  -  Red: Link rate < 50 Mbps (Good)

## Button Descriptions

The buttons on your Powerline adapters let you do the following:

- **Security button:** Use the Security button to secure the Powerline network between adapters. Press the **Security** button for 2 seconds on each adapter to pair adapters and to set a new random security key.

For more information about Security settings, see [Advanced Setup](#) on page 22.

- **Power On/Off:** Use the Power On/Off button to turn the device on and off. When this button is in the Off position, the pass-through socket still has power.
- **Factory Reset:** Use the Factory Reset button to return your Powerline adapter to its default factory settings. Press the **Factory Reset** button for 2 seconds with the device plugged into the electrical socket, and then release it.







## User Manual

You can get the user manual online at  
<http://downloadcenter.netgear.com>.

## Compliance

For the complete EU Declaration of Conformity, visit:  
[http://support.netgear.com/app/answers/detail/a\\_id/11621/](http://support.netgear.com/app/answers/detail/a_id/11621/).



This symbol is placed in accordance with the European Union Directive 2002/96 on the Waste Electrical and Electronic Equipment (the WEEE Directive). If disposed of within the European Union, this product should be treated and recycled in accordance with the laws of your jurisdiction implementing the WEEE Directive.

For indoor use only in all EU countries and in Switzerland.



**NETGEAR, Inc.**  
350 East Plumeria Drive  
San Jose, CA 95134 USA



201-14304-01

**August 2012**

## Free Manuals Download Website

<http://myh66.com>

<http://usermanuals.us>

<http://www.somanuals.com>

<http://www.4manuals.cc>

<http://www.manual-lib.com>

<http://www.404manual.com>

<http://www.luxmanual.com>

<http://aubethermostatmanual.com>

Golf course search by state

<http://golfingnear.com>

Email search by domain

<http://emailbydomain.com>

Auto manuals search

<http://auto.somanuals.com>

TV manuals search

<http://tv.somanuals.com>