

NETGEAR® ReadyNAS™ Pro

Follow these instructions to install your NETGEAR® ReadyNAS™ Pro. Then, consult the *ReadyNAS Pro User Manual* for instructions on configuring and operating your unit. A link to the *ReadyNAS Pro User Manual* is on the *Installation CD* and on the NETGEAR support site at <http://kbserver.netgear.com>. These instructions assume the unit is using the factory default X-RAID2 disk configuration.

Estimated completion time: 20 minutes.

Note: A diskless unit requires installing disks and initializing RAID before proceeding. Go to <http://kbserver.netgear.com> for a list of supported disks. Refer to the *ReadyNAS Pro User Manual* for instructions on installing disks and configuring RAID.

First, Install the RAIDar Utility

Install the RAIDar utility from the product *Installation CD*. Windows, MAC and Linux versions of the RAIDar utility are provided.

Next, Connect the Unit

For initial setup, connect one Ethernet port of the ReadyNAS Pro to your network, and turn it on. It takes about a minute to boot. The factory default is to get its IP address via DHCP. After it boots, the status area will display the IP address assigned to the unit and the amount of disk space available. Note the IP address displayed in the status area.

Log in to the Unit

1. Run the RAIDar utility. It will detect the unit.

Tip: In your DHCP server, reserve the IP address assigned for your ReadyNAS Pro so that it always gets this address. This helps assure that mapped drives work consistently on any operating system.

2. Click **Setup** to open a browser ReadyNAS Pro FrontView session with the unit. The login screen will display. The default user name is **admin** and the password is **netgear1**.



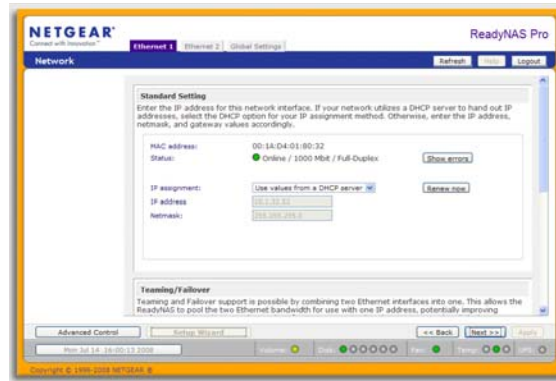
The FrontView configuration utility home page displays.

Use the Setup Wizard to Configure Basic Settings

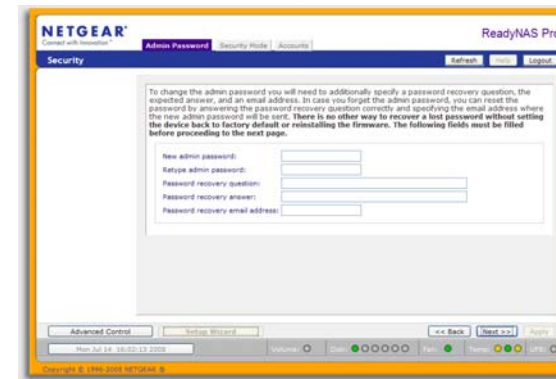
The Setup Wizard will guide you through setting up basic file sharing. Refer to the *ReadyNAS Pro User Manual* for instructions on configuring options like backup, streaming media servers, printers, VLAN, or user accounts and quotas.

Note: If you choose to bypass the Setup Wizard, be sure to configure and alerts email address, change the admin password, and provide a password recovery question.

1. In the factory default state, when logged in to the unit, Setup Wizard is enabled. Click **Next** to proceed with the wizard.
2. On the Clock tab page, modify or accept the default timezone, time, and NTP options. Click **Next** to proceed.
3. On the Alerts tab page, provide at least one email address for system alerts. Click **Next** to proceed.
4. On the Ethernet 1 tab page, accept or change the IP address settings. Click **Next** to proceed.
5. On the Global Settings tab page, you can modify the unit's hostname. Also, if you will use a static IP configuration, you will need to configure the gateway and DNS settings (you do not have to change these settings if you use the unit in its default DHCP configuration). Click **Next** to proceed.



6. On the Admin Password page, change the system login password, and provide a recovery question, answer, and email address. Note these changes. Click **Next** to proceed.



7. On the Security Mode tab page, accept the default option of "User" which controls access to shares based on user or group accounts. FrontView will attempt to use the first workgroup name it discovers in the network. Otherwise, it will default to "VOLUME" as the workgroup name. Specify the workgroup name you want the unit to join. Refer to the *ReadyNAS Pro User Manual* for ACS setup instructions. Click **Next** to proceed.
8. On the Accounts page, click **Add User**. Add a new user and user password. Click **Next** to finish the wizard. Refer to the *ReadyNAS Pro User Manual* for full instructions on setting up accounts.

This completes the basic setup. Next, you will verify that you can access shares on your ReadyNAS Pro.

Accessing Your Shared Storage

Follow the steps below to access shares on the ReadyNAS Pro.

Note that, by default, these file sharing protocols are enabled: CIFS, AFP (advertised over both Bonjour and ATP), HTTP/S, FTP, NFS, and Rsync are supported but are not enabled by default.

Refer to the *ReadyNAS Pro User Manual* for instructions on accessing shares from Linux or Unix workstations, drive mapping, and other file sharing options, including unique language support for file names such as those that use unicode or ideographic characters.

Accessing Shares from a Windows PC

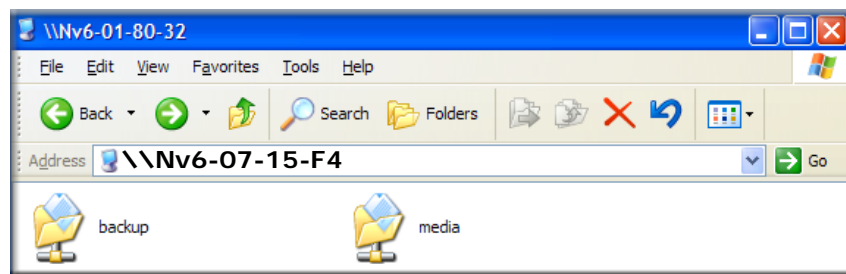
1. To see a share listing in Windows, either click Browse in RAIDar or enter `\\<ip_address>` or `\\<hostname>` in the Windows Explorer address bar.



- When prompted, enter the user name and password to connect to the ReadyNAS Pro.



The Windows Explorer will display the contents of the ReadyNAS Pro share.



Accessing Shares from MAC OS X

- To access the same share over AFP with OS X, open Finder and locate the ReadyNAS Pro hostname in the SHARED section.



- Click on the hostname to display the shares.



201-11390-01

July 2008

Operating Tips and Precautions

Follow these guidelines to get the best performance and trouble-free operation from your ReadyNAS Pro.

Power Up/Down

Powering up the unit could take about a minute. Power down the unit by pressing the power button on the front twice. This assures an orderly shutdown. For other power down and disk spin-down options, refer to the *ReadyNAS Pro User Manual*.

Ventilation

Six large capacity high speed disks can produce considerable heat. Be sure to install the unit so that the fan exhausts are unobstructed.

Using a UPS

An uninterruptible power supply protects your ReadyNAS Pro, and can enable automatic shut down in an orderly fashion when there is an interruption in power. Also, your ReadyNAS Pro can operate at higher performance levels when it senses it is connected to a UPS. The *ReadyNAS Pro User Manual* provides instructions on using a UPS.

Viewing Status Information in FrontView

The bottom row of the FrontView configuration utility provides color coded status indicators of workgroup connections, disks, the fan, temperature, and UPS (if used).



Double-click on a status light to view details about that item.

Redundancy and Expansion

A one-disk device has no redundancy and provides no protection from a disk failure. However, if and when you feel the need for redundancy, simply hot-add a new disk with at least the capacity of the first disk (there's no need to power off the ReadyNAS Pro). Depending on the size of the disk, within a few hours, your data volume will be fully redundant. The process occurs in the background, so access to the ReadyNAS Pro is not interrupted. Additionally, as your storage requirement grows, you can hot add more disks for "horizontal" expansion, or replace your disks with larger capacity ones, and X-RAID2 automatically and incrementally expands your storage "vertically." X-RAID2 lets you do this without reformatting your disks and shuffling your data back and forth.

Technical Support

Locate the serial number on the bottom label of your product, and use it to register your product at <http://www.NETGEAR.com/register>.

Registration on the website or over the phone is required before you can use our telephone support service. The phone numbers for worldwide regional customer support centers are on the Warranty and Support Information card that came with your product.

Go to <http://www.netgear.com/support> for product updates and Web support.



This symbol was placed in accordance with the European Union Directive 2002/96 on the Waste Electrical and Electronic Equipment (the WEEE Directive). If disposed of within the European Union, this product should be treated and recycled in accordance with the laws of your jurisdiction implementing the WEEE Directive.

© 2008 by NETGEAR, Inc. All rights reserved. NETGEAR and the NETGEAR logo are registered trademarks of NETGEAR, Inc. in the United States and/or other countries. Other brand and product names are trademarks or registered trademarks of their respective holders. Information is subject to change without notice.

Free Manuals Download Website

<http://myh66.com>

<http://usermanuals.us>

<http://www.somanuals.com>

<http://www.4manuals.cc>

<http://www.manual-lib.com>

<http://www.404manual.com>

<http://www.luxmanual.com>

<http://aubethermostatmanual.com>

Golf course search by state

<http://golfingnear.com>

Email search by domain

<http://emailbydomain.com>

Auto manuals search

<http://auto.somanuals.com>

TV manuals search

<http://tv.somanuals.com>