

## FS700TS (728TS, 752TS, 752TPS) Series Gigabit Smart Switch

# Start Here

Follow these instructions to set up your smart switch. Before proceeding with the smart switch installation, familiarize yourself with the contents of the Resource CD, especially the reference manuals on your Resource CD.

## First, Verify Package Contents

- NETGEAR Smart Switch
- Rubber footpads for tabletop installation
- Power cord
- Rack-mount kit for installing the switch in a 19-inch rack
- Installation Guide
- Smart Switch Resource CD with Smartwizard Discovery and Hardware Installation Guide. (A link to the online Software User's Manual is on the Resource CD.)
- Warranty/Support Information Card

## Then, Prepare to Install Your Smart Switch

Prepare a PC with an Ethernet adapter and a CD ROM drive.

## Next, Install the Smartwizard Discovery Utility on a PC

1. Insert the resource CD into your CD drive.
2. Run the Setup program to install the Smartwizard Discovery. The Installation Wizard will guide you through.

## Next, Connect Your Smart Switch in the Correct Order

These instructions assume you are using DHCP in your network. If you are using static IP addressing in your network, configure the switch IP address before connecting it to your network. In the absence of a DHCP server, the switch defaults to 192.168.0.239 for its IP address.

To configure the switch before connecting it to your network:

1. Set up the PC with an IP address in the 192.168.0.x subnet, and connect the PC to the switch. Then, use the Smartwizard Discovery utility to configure the switch.
2. Connect each PC to an RJ-45 network port on the Switch front panel.

Use category 5 (Cat5) unshielded twisted-pair (UTP) cable terminated with an RJ-45 connector to connect.

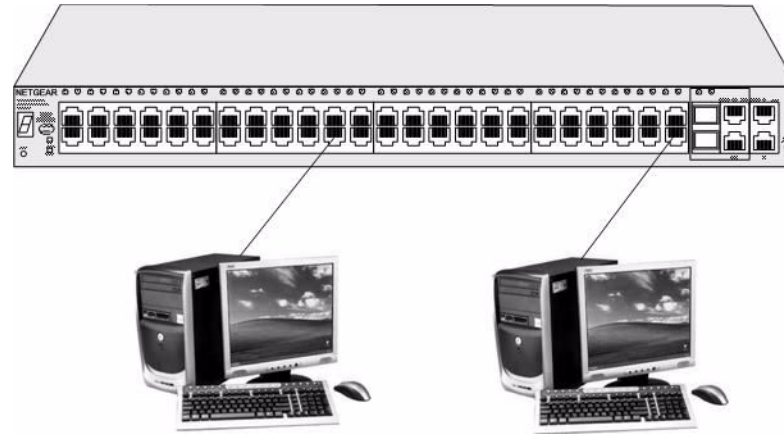


Figure 1

3. Connect the Smart Switch to your network.
4. Power on the switch.
5. Verify that the PC with the Smartwizard Discovery utility is on the same subnet as the switch.

## Now, Configure the Switch with the Smartwizard

1. Click Start > Programs and run Smartwizard.

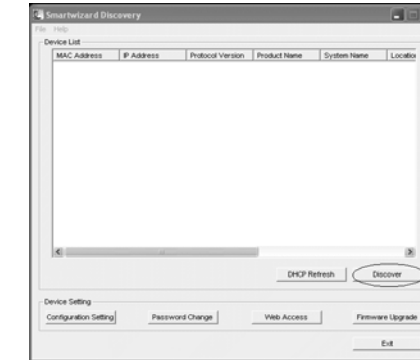


Figure 2

2. Click Discover to find your switch in the network.

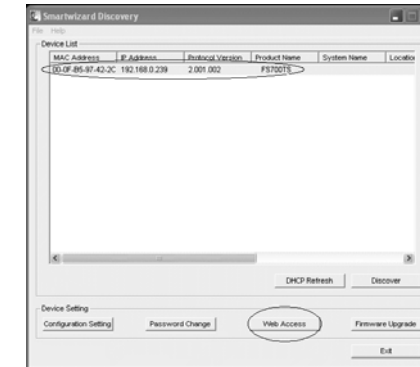


Figure 3

The Smartwizard Discovery utility finds the switch and displays its MAC Address, IP Address, and model number. If you cannot configure your switch, verify that the cable connections are secure, that the IP address configuration of the PC is in the same subnet as the switch.

- Click Discover and select the line displaying the details of your switch.

If there are multiple smart switches in your network, ensure you have selected the correct switch to configure.

- Click Web Access to view the switch log in screen.

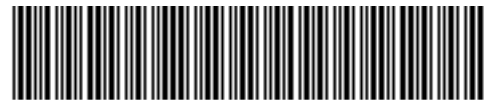


Figure 4

- Enter the default password of password in lower case letters and click Login. The Main Web Access Menu displays.



Figure 5



201-11191-01

October 2007

## Troubleshooting Tips

Following are some tips for correcting simple problems you may have.

- Be sure to power on your PC and smart switch in the correct sequence.
- Follow this sequence. Turn off the smart switch and computer. First, turn on the smart switch and wait two minutes. Next turn on the computer.

**Ensure the Ethernet cables are securely plugged in.**

- For each powered on computer connected to the smart switch with a securely plugged in Ethernet cable, the corresponding smart switch LAN port status light will be lit.

**Ensure the network settings of the computer are correct.**

- In most cases, computers should be configured to obtain an IP address automatically via DHCP. For help with this, please see the animated tutorials on the CD or the Reference Manual Appendix C on the CD. If your network uses static IP addresses, be sure the switch and computer are configured with valid IP addresses.

## Technical Support

Thank you for selecting NETGEAR products.

After completing setup and configuration, locate the serial number on the bottom label of the Smart switch and use it to register your product at <http://www.netgear.com/register>.

Registration on the web site or over the phone is required before you can use our telephone support service. The phone numbers for worldwide regional customer support centers are on the Warranty and Support Information card that came with your product.

Go to <http://www.netgear.com/support> for product updates and web support.



This symbol was placed in accordance with the European Union Directive 2002/96 on the Waste Electrical and Electronic Equipment (the WEEE Directive). If disposed of within the European Union, this product should be treated and recycled in accordance with the laws of your jurisdiction implementing the WEEE Directive.

## Free Manuals Download Website

<http://myh66.com>

<http://usermanuals.us>

<http://www.somanuals.com>

<http://www.4manuals.cc>

<http://www.manual-lib.com>

<http://www.404manual.com>

<http://www.luxmanual.com>

<http://aubethermostatmanual.com>

Golf course search by state

<http://golfingnear.com>

Email search by domain

<http://emailbydomain.com>

Auto manuals search

<http://auto.somanuals.com>

TV manuals search

<http://tv.somanuals.com>