

Stackable

for high-speed expandability



10/100 Mbps Stacking Fast Ethernet Switch

FS524S

NETGEAR's FS524S Stackable Switch connects multiple PCs together with web, print, file, and e-mail servers, as well as routers. The 2 dedicated stacking ports on the back of each switch allow you full use of the 24 Fast Ethernet ports on the front. You can grow your network up to 96 users with additional switches, using a robust backbone bandwidth of up to 4000 Mbps.

POWERFUL

Stacking 4 Gigabit connection gives 24-10/100 ports high-performance data transfer and eliminates bottlenecks between switches

COST-EFFECTIVE

Gives you the same throughput you'd get with a more expensive 24+2 copper gigabit switch, but for much less money. With the FS524S, you can expand your network without paying for extras—the stacking port is built-in and the stacking cable is included.

EXPANDABLE

Provides connectivity for up to 4 switches, enabling your network to support as many as 96 users and allowing for incremental network growth as your budget allows.

SELF-HEALING

If one box in a stack fails, the others continue to communicate.

HASSLE-FREE

Everything for stacking is included and installation is easy—it's Plug and Play.



Help is there when you need it!

NETGEAR provides free, 24x7

telephone and e-mail technical

support in English, with selected

local language support during

office hours.

www.NETGEAR.com

NETGEAR™

NETGEAR Inc.
 4500 Great America Parkway
 Santa Clara, CA 95054
 USA

Phone: 1-888-NETGEAR
 E-mail: support@NETGEAR.com
 www.NETGEAR.com

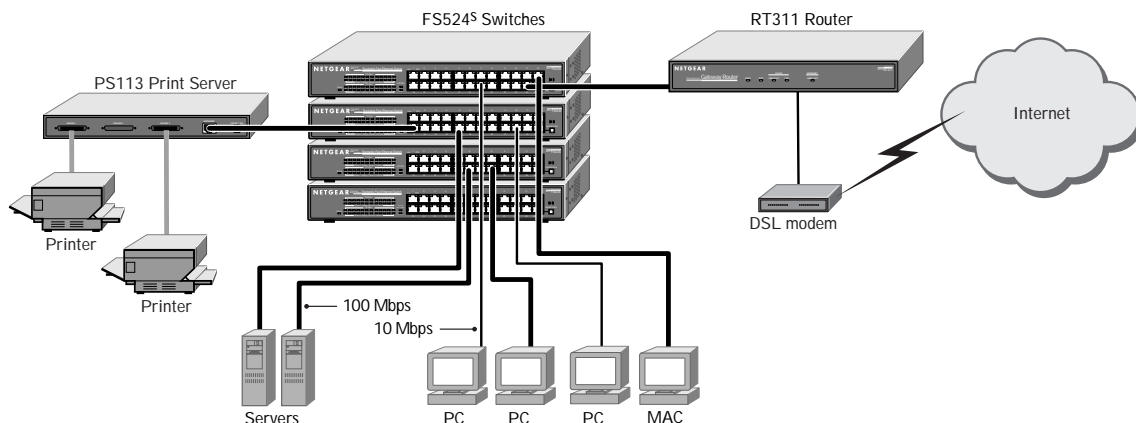
In-Country Phone Support

(24x7 phone support in English, local language support during office hours.)

Australia	1800-787-638	Korea	00308-11-0319
Austria	00800-06384327	Netherlands	0800-023-0981
	(00800-0-NETGEAR)	New Zealand	00800-1233-4566
Denmark	808-82179	Norway	800-12041
Canada	1-888-NETGEAR	Singapore	001-800-1233-4566
Finland	0800-111-036	Sweden	0200-298-298
France	0800-77-17-53	Switzerland	00800-0638-4327
Germany	00800-06384327		(00800-0-NETGEAR)
	(00800-0-NETGEAR)	United Kingdom	020-7216-0014
Hong Kong	001-800-1233-4566	United States	1-888-NETGEAR
Japan	0120-66-5402	All Other Countries	+1 801-236-8499

NETGEAR™ is a trademark of NETGEAR, Inc. Windows® is a registered trademark of Microsoft Corporation. Other brand and product names are trademarks or registered trademarks of their respective holders. Information is subject to change without notice. All rights reserved.

October 2000



TECHNICAL SPECIFICATIONS

Standards Compliance

IEEE 802.3i 10BASE-T Ethernet
 IEEE 802.3u 100BASE-TX Fast Ethernet
 IEEE 802.3x Flow Control

Network ports

Twenty-four 10 or 100 Mbps Ethernet
 RJ-45 ports

Stacking ports

Two 2 Gbps rear panel stacking ports
 for connecting additional switches

AC Power

Auto-sensing 100 to 240V, 50/60 Hz
 Localized power cord for North America,
 Japan, UK, Europe, Australia

Weight

2.3 kg (5.0 lbs)

Dimensions

W 330 mm (13")
 D 207 mm (8")
 H 43 mm (1.7")

Environmental Specifications

Operating temperature: 0 and 40° C
 Operating humidity: 90% maximum relative
 humidity, noncondensing

Electromagnetic Compliance

FCC Part 15 A
 CE EN 55022
 C-Tick
 VCCI A

Safety Agency Approvals

UL, cUL
 CSA
 CE
 T-Mark
 TUV

Warranty

Switch: 5 years
 Power supply: 1 year

PACKAGE CONTENTS

Model FS524S switch
 Stacking cable
 Rack-mount kit
 Self-adhesive foot pads
 Power cord
 User guide
 Warranty & Registration Cards
 Support Information Card

SYSTEM REQUIREMENTS

Category 5 network cables
 Network card for each PC
 Network software (e.g., Windows)



N10947

D-FS524S-001

www.NETGEAR.com

NETGEAR™

Free Manuals Download Website

<http://myh66.com>

<http://usermanuals.us>

<http://www.somanuals.com>

<http://www.4manuals.cc>

<http://www.manual-lib.com>

<http://www.404manual.com>

<http://www.luxmanual.com>

<http://aubethermostatmanual.com>

Golf course search by state

<http://golfingnear.com>

Email search by domain

<http://emailbydomain.com>

Auto manuals search

<http://auto.somanuals.com>

TV manuals search

<http://tv.somanuals.com>