

# ProSafe<sup>™</sup> Networking Product & Solutions Guide



## Contents

INTRODUCTION TO PROSAFE™	1
UNMANAGED SWITCHES	2
NETWORK SOLUTION FOR SMALL OFFICES	3
SMART MANAGED SWITCHES	4
NETWORK SOLUTION FOR REGIONAL OFFICES	5
LAYER 2 MANAGED SWITCHES	6
LAYER 3 MANAGED SWITCHES	7
MODULES	8
VPN FIREWALLS	9
SSL VPN	10
NETWORK SOLUTION FOR REMOTE CONNECTIVITY	11
NETWORK SOLUTION FOR HEAD OFFICES	12
WIRELESS ACCESS POINTS & ANTENNAS	13



## Introduction to ProSafe™

# THE PROFESSIONAL CHOICE FOR BUSINESS NETWORKING SOLUTIONS

ProSafe™ is the brand name of NETGEAR's business class networking products. All ProSafe™ products are designed to offer outstanding value, high performance and exceptional reliability for small-to-medium-sized business networks.

ProSafe™ products are housed in practical form factors with reliable, hard-wearing blue metal cases and are designed to allow for easy expansion or phased upgrades in growing business networks. Awards and recognition of ProSafe™ business class products has been achieved because NETGEAR® concentrates on:

- **Adhering to the industry's highest quality standards**
- **Delivering intelligent, practical features at attractive price points**
- **Addressing the unique security requirements of business networks**

This guide provides an overview of each ProSafe™ product range with helpful network solutions for a variety of office and company environments. For detailed product information and datasheets, please visit [www.netgear.co.uk](http://www.netgear.co.uk) or [www.netgear.ie](http://www.netgear.ie).



# Unmanaged Switches

Small, undemanding office networks operate well using plug and play Unmanaged Switches that offer basic functionality and require little configuration. NETGEAR® offers a choice of Rackmountable or Desktop Unmanaged Switches, which are inexpensive and easy to set up.

KEY FEATURES		
EASY TO USE, WORK STRAIGHT OUT OF THE BOX	CHOICE OF 4, 8, 16 AND 24 PORT SWITCHES	AUTO UPLINK™ TECHNOLOGY AUTO-ADJUSTS FOR DIFFERENT ETHERNET CABLE TYPES
“AUTO-SENSING” SENSES THE RIGHT NETWORK SPEED AND DUPLEX MODE	INTEGRATED LEDS FOR EASY NETWORK MONITORING	HOUSED IN STURDY, METAL CASINGS
RACKMOUNTED SWITCHES FIT IN STANDARD 19-INCH RACK	INTEROPERABLE WITH EXISTING 10 & 100 ETHERNET DEVICES	POWER OVER ETHERNET (PoE) MODELS ENABLE EASY DEPLOYMENT OF WIRELESS DEVICES



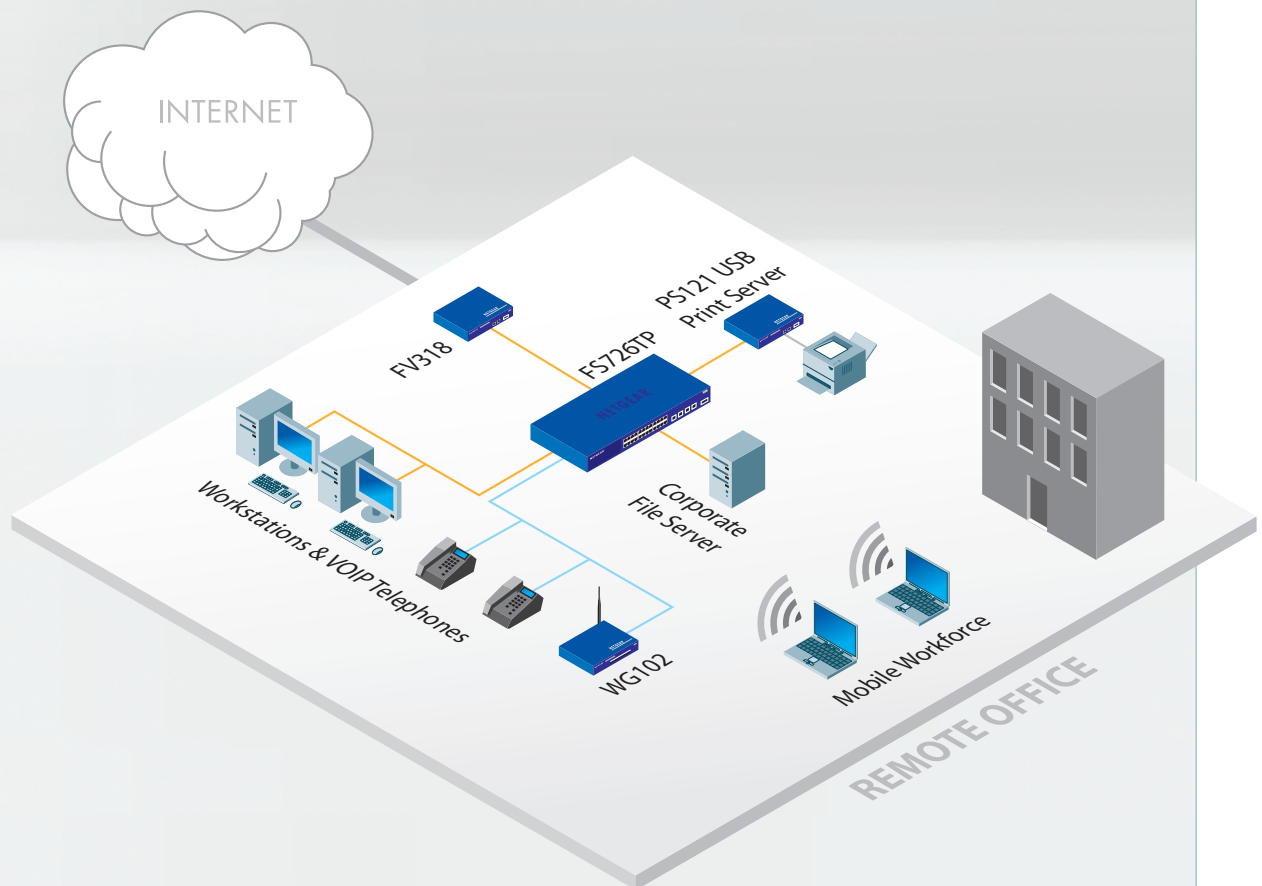
PART NO.	PRODUCT DESCRIPTION
FS105	5 PORT FAST ETHERNET DESKTOP SWITCH
FS108	8 PORT FAST ETHERNET DESKTOP SWITCH
FS108P	8 PORT FAST ETHERNET DESKTOP SWITCH, WITH 4 PORT PoE
FS116	16 PORT FAST ETHERNET DESKTOP SWITCH
FS116P	16 PORT FAST ETHERNET DESKTOP SWITCH, WITH 8 PORT PoE
GS105	5 PORT GIGABIT ETHERNET DESKTOP SWITCH
GS108	8 PORT GIGABIT ETHERNET DESKTOP SWITCH
GS116	16 PORT GIGABIT ETHERNET DESKTOP SWITCH
JFS516	16 PORT FAST ETHERNET RACKMOUNT SWITCH
JFS524	24 PORT FAST ETHERNET RACKMOUNT SWITCH
FS524	24 PORT FAST ETHERNET RACKMOUNT SWITCH
JGS516	16 PORT GIGABIT ETHERNET RACKMOUNT SWITCH
JGS524	24 PORT GIGABIT ETHERNET RACKMOUNT SWITCH
JGS524F	24 PORT GIGABIT ETHERNET RACKMOUNT SWITCH WITH 2 FIBER PORTS*

\*Utilisation of a GBIC Module Slot eliminates a 10/100/1000 Copper Gigabit Port

## NETWORK SOLUTION FOR A SMALL OFFICE

Being small shouldn't mean compromising network efficiency, NETGEAR® offers professional wired and wireless networking solutions to suit small companies, satellite offices and branch offices.

The networking diagram exemplified below utilises a NETGEAR® ProSafe™ Smart Managed Switch (FS726TP) that provides a degree of web-based management to configure ports, prioritise traffic and deliver Gigabit throughput to the company server. The FS726TP also includes built-in Power over Ethernet (PoE) to power the VoIP telephones and a Wireless Access Point (WG102). PoE eliminates the need to position mobile devices close to AC sockets, allowing for far more flexible deployment. In this environment, the WG102 complements the wired network by offering wireless network and Internet access to visitors and field-based staff. The small business Firewall (FVS318) provides Internet access and IPSec VPN encrypted connectivity to head office-held files and applications.



**KEY:**

FAST ETHERNET CONNECTIVITY	10/100 & POE CONNECTIVITY	USB CONNECTIVITY

## Smart Managed Switches

NETGEAR's ProSafe™ Fast and Gigabit Smart Managed Switches deliver reliable entry-level network management and capacity without the cost and complexity associated with full Layer 2 and Layer 3 management implementation.

All Smart Managed Switches are managed via an intuitive web browser interface and all models are rackmountable and offer a degree of fiber connectivity. Selective models offer stacking and/or Power-over-Ethernet (PoE) for easy deployment of Wireless Access Points, security cameras or IP telephones.

KEY FEATURES		
STRAIGHTFORWARD TO SET UP AND MANAGE VIA WEB BROWSER INTERFACE	CHOICE OF 16, 24 AND 48 PORTS (ALL NON-BLOCKING)	FAST MODELS INCLUDE GIGABIT PORTS FOR CONNECTION TO BACKBONE OR SERVERS
AUTO UPLINK™ TECHNOLOGY AUTO-ADJUSTS FOR DIFFERENT ETHERNET CABLES	AUTO-SENSING PORTS AUTO-SENSE THE RIGHT NETWORK SPEED	SNMP MANAGEMENT (V1 ON ALL MODELS, 2C AND 3 ON SELECTIVE MODELS)
PERFORMANCE MONITORING, PORT CONFIGURATION, VLAN FOR TRAFFIC CONTROL AND SPANNING TREE	PORT TRUNKING FOR INCREASED BANDWIDTH, CLASS OF SERVICE (CoS) AND TRAFFIC PRIORITISATION	ADVANCED SECURITY ON STACKING MODELS, INCLUDING PORT-BASED ACCESS CONTROL



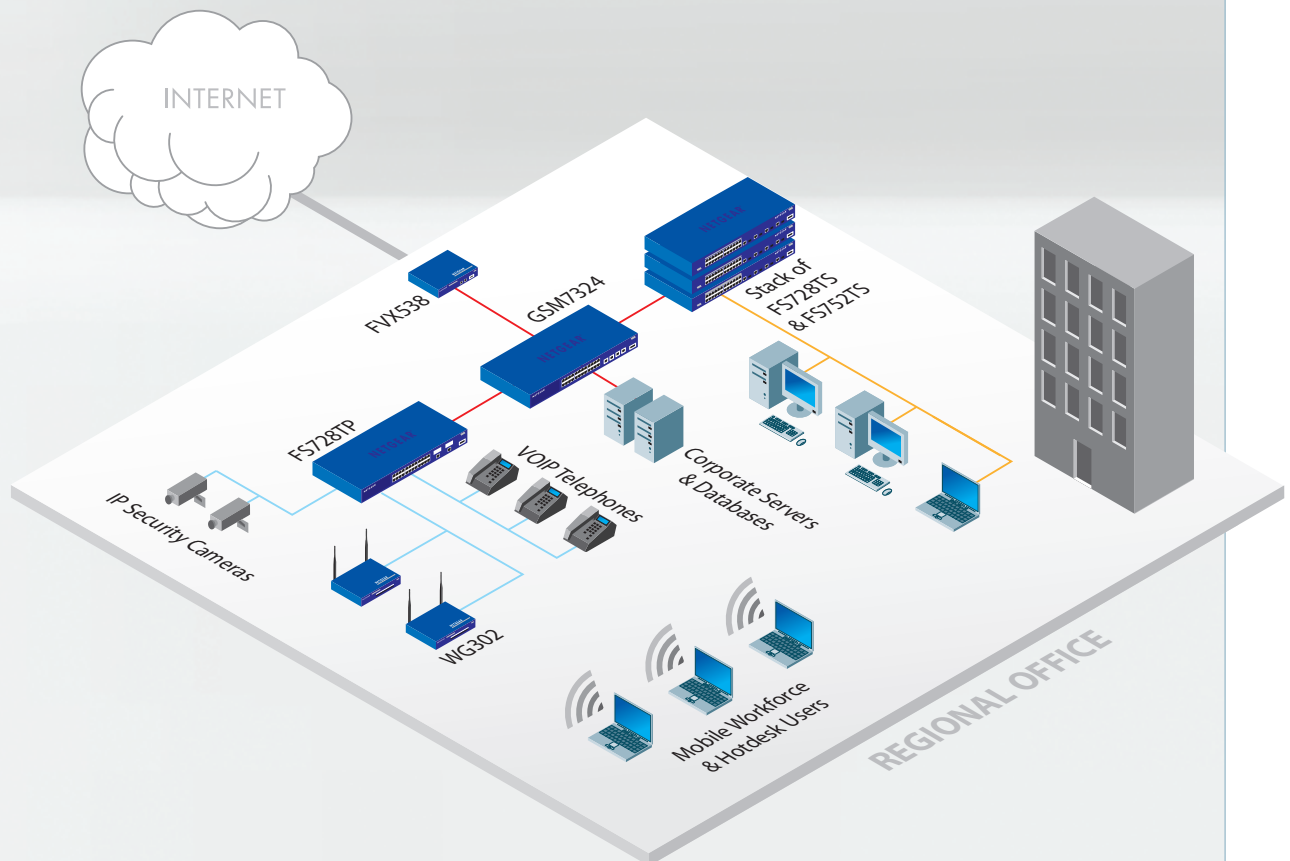
PART NO.	PRODUCT DESCRIPTION
FS726T	24 PORT FAST ETHERNET SMART MANAGED SWITCH, WITH 2 GIGABIT PORTS & 2 FIBER SLOTS*
FS726TP	24 PORT FAST ETHERNET SMART MANAGED SWITCH, WITH 2 GIGABIT PORTS, 2 FIBER SLOTS* & 12 PORT PoE
FS750T2	48 PORT FAST ETHERNET SMART MANAGED SWITCH, WITH 2 GIGABIT PORTS & 2 FIBER SLOTS*
FS728TS	24 PORT FAST ETHERNET SMART MANAGED SWITCH, WITH 4 GIGABIT PORTS & 2 FIBER SLOTS*
FS752TS	48 PORT FAST ETHERNET SMART MANAGED SWITCH, WITH 4 GIGABIT PORTS & 2 FIBER SLOTS*
FS752TPS	48 PORT FAST ETHERNET SMART MANAGED SWITCH, WITH 4 GIGABIT PORTS, 2 FIBER SLOTS* & 24 PORT PoE
GS716T	16 PORT GIGABIT ETHERNET SMART MANAGED SWITCH & 2 FIBER SLOTS*
GS724T	24 PORT GIGABIT ETHERNET SMART MANAGED SWITCH & 2 FIBER SLOTS*
GS748T	48 PORT GIGABIT ETHERNET SMART MANAGED SWITCH & 4 FIBER SLOTS*
GS724TS	24 PORT GIGABIT ETHERNET SMART MANAGED, STACKABLE SWITCH & 4 FIBER SLOTS* (COMING SOON)
GS748TS	48 PORT GIGABIT ETHERNET SMART MANAGED, STACKABLE SWITCH & 4 FIBER SLOTS* (COMING SOON)

\*Utilisation of a GBIC Module Slot eliminates a 10/100/1000 Copper Gigabit Port

# NETWORK SOLUTION FOR A REGIONAL OFFICE

Medium enterprises such as regional offices will probably require increased networking management and throughput to support many users, plus multiple applications and servers. This scenario depicts a core Layer 3 Managed, Gigabit Rackmount Switch (GSM7324) providing Gigabit connectivity to company servers and routing between VLANs (Virtual Private Local Area Networks). The L3 core switch also delivers Gigabit throughput to Stackable, Smart Managed Switches (FS728TS & FS752TS), providing 10/100 connectivity directly to PCs, laptops and a print server.

Wireless Access Points (WG302s) and surveillance cameras are connected and powered by a Smart Switch (FS728TP) with built-in PoE for easy, flexible deployment. The WG302s complement the wired network by providing wireless connectivity to hot-desking staff and visitors. The dual WAN load balancing Firewall (FVX538) with dial backup ensures a constant Internet connection to the outside world and head office resources via site-to-site IPSec VPN (Virtual Private Network).



**KEY:**

FAST ETHERNET CONNECTIVITY	GIGABIT ETHERNET CONNECTIVITY	10/100 & POE CONNECTIVITY

## Layer 2 Managed Switches

NETGEAR's ProSafe™ Layer 2 Managed Switches are ideal for small-to-medium-sized organisations needing reliable, high performance switching.

Full Layer 2 management capabilities, non-blocking and wire-speed performance provides a secure network foundation optimised for data, wireless and IP communications. Delivering best-in-class networking that is designed to meet the needs of growing networks, these switches are simple to set up and use, and can be managed via a web-browser, command line interface or telnet.

KEY FEATURES		
CHOICE OF 12, 24 OR 48 PORTS (ALL NON-BLOCKING)	AUTO UPLINK™ TECHNOLOGY AUTO- ADJUSTS FOR DIFFERENT ETHERNET CABLES	AUTO-SENSING PORTS AUTO-SENSE THE RIGHT NETWORK SPEED
MANAGE VIA WEB-BROWSER, COMMAND LINE INTERFACE (CLI) OR TELNET	SNMP MANAGEMENT (V1, 2c AND 3)	PERFORMANCE MONITORING, PORT CONFIGURATION, VLAN FOR TRAFFIC CONTROL
BASIC, MULTICAST AND RAPID SPANNING TREE TO BLOCK REDUNDANT PATHS	PORT TRUNKING FOR INCREASED BANDWIDTH AND TRAFFIC PRIORITISATION	ADVANCED REMOTE NETWORK MANAGEMENT (RMON GROUPS 1, 2, 3 & 9)



PART NO.	PRODUCT DESCRIPTION
FSM726	24 PORT FAST ETHERNET LAYER 2 MANAGED SWITCH, WITH 2 GIGABIT PORTS & 2 FIBER SLOTS*
GSM7212	12 PORT GIGABIT ETHERNET LAYER 2 MANAGED SWITCH, WITH 12 FIBER SLOTS*
GSM7224	24 PORT GIGABIT ETHERNET LAYER 2 MANAGED SWITCH, WITH 4 FIBER SLOTS*
GSM7248	48 PORT GIGABIT ETHERNET LAYER 2 MANAGED SWITCH, WITH 4 FIBER SLOTS*

\* Utilisation of a GBIC Module Slot eliminates a 10/100/1000 Copper Gigabit Port



## Layer 3 Managed Switches

NETGEAR's ProSafe™ Fast and Gigabit Layer 3 Managed Switches deliver maximum throughput and flexibility where you need it; to high-speed, high-density workgroups at the edge of the network, in the backbone of growing networks or for bandwidth-thirsty file and application servers.

The full wire-speed, non-blocking design with Layer 3 switching functionality ensures reliable routing between VLANs and network segmentation. Robust security, Quality of Service, and management features deliver intelligent-edge connectivity for essential business applications. Power-over-Ethernet (PoE) options are available for high density VoIP applications or easy deployment of Wireless Access Points.

KEY FEATURES		
CHOICE OF 12, 24 OR 48 PORTS (ALL NON-BLOCKING)	AUTO UPLINK™ TECHNOLOGY AUTO-ADJUSTS FOR DIFFERENT ETHERNET CABLES	AUTO-SENSING PORTS AUTO-SENSE THE RIGHT NETWORK SPEED
MANAGE VIA WEB-BROWSER, COMMAND LINE INTERFACE (CLI) OR TELNET	RELIABLE ROUTING BETWEEN VLANS AND NETWORK SEGMENTATION	BASIC, MULTICAST AND RAPID SPANNING TREE TO BLOCK REDUNDANT PATHS
PORT TRUNKING FOR INCREASED BANDWIDTH AND TRAFFIC PRIORITISATION	ADVANCED REMOTE NETWORK MANAGEMENT (RMON GROUPS 1, 2, 3 & 9)	ADVANCED SECURITY, INCLUDING; 802.1X, SSL/SSH, HTTPS AND ACCESS CONTROL LISTS



PART NO.	PRODUCT DESCRIPTION
FSM7326P	24 PORT FAST ETHERNET LAYER 3 MANAGED SWITCH, WITH 2 GIGABIT PORTS, 2 FIBER SLOTS* & 24 PORT PoE
FSM7328S	24 PORT FAST ETHERNET LAYER 3 MANAGED, STACKABLE SWITCH, WITH 4 GIGABIT PORTS & 4 FIBER SLOTS*
FSM7352S	48 PORT FAST ETHERNET LAYER 3 MANAGED, STACKABLE SWITCH, WITH 4 GIGABIT PORTS & 4 FIBER SLOTS*
FSM7352PS	48 PORT FAST ETHERNET LAYER 3 MANAGED, STACKABLE SWITCH, WITH 4 GIGABIT PORTS, 4 FIBER SLOTS* & 48 PORT PoE
GSM7312	12 PORT GIGABIT ETHERNET LAYER 3 MANAGED SWITCH, WITH 12 FIBER SLOTS*
GSM7324	24 PORT GIGABIT ETHERNET LAYER 3 MANAGED SWITCH, WITH 4 FIBER SLOTS*
GSM7328S	24 PORT GIGABIT ETHERNET LAYER 3 MANAGED, STACKABLE SWITCH WITH 4 FIBER SLOTS* & 4 10-GIG FIBER/24 GIG STACKING MODULE BAYS
GSM7352S	24 PORT GIGABIT ETHERNET LAYER 3 MANAGED, STACKABLE SWITCH WITH 8 FIBER SLOTS* & 4 10-GIG FIBER/24 GIG STACKING MODULE BAYS

\* Utilisation of a GBIC Module Slot eliminates a 10/100/1000 Copper Gigabit Port

## Modules

NETGEAR's ProSafe™ Switch Modules enable businesses to add high-speed, long-distance fiber connectivity to servers or between two LANs (Local Area Networks).

A choice of 1000 and 10 Gig-based industry standard Small Form Factor Pluggable (SFP) GBIC transceiver modules are designed to compliment NETGEAR's ProSafe™ Managed Switch range and are compatible with third-party products. Simplified installation means they are ideal for both end-users and technicians. In addition, stacking kits (AX742) are available for use with NETGEAR's ProSafe™ Layer 3 Managed, Stackable Switches.

KEY FEATURES		
MODULES ADD FIBER OPTIC CONNECTIVITY TO NETGEAR® PROSAFE™ MANAGED SWITCHES	APPROPRIATE MODULES MEET SFP GBIC STANDARD FOR USE WITH ANY SFP GBIC-COMPLIANT SLOT	1000 GIG BASE SFP MODULES FOR USE WITH SMART, L2 AND L3 MANAGED SWITCHES*
10 GIG BASE SFP MODULES FOR USE WITH GSM7328S & GSM7352S	MODULES DRIVE GIGABIT FIBER CONNECTIVITY OVER LONG DISTANCES	MODULES ARE COMPATIBLE WITH THIRD-PARTY PRODUCTS
SIMPLE INSTALLATION FOR NOVICES OR TECHNICIANS	SUPPORT FOR 50µM AND 62.5µM MULTIMODE FIBER CABLES OR 9µM SINGLE MODE CABLING	STACKING KITS PROVIDE 24GBPS STACKING CONNECTIVITY TO L3 MGD, STACKABLE SWITCHES



PART NO.	PRODUCT DESCRIPTION
AGM721F	1000 BASE-SX GBIC MODULE (FOR USE WITH FSM726)
AGM722F	1000 BASE-LX GBIC MODULE (FOR USE WITH FSM726)
AGM731F	1000 BASE-SX SFP FIBER GBIC MODULE (SUPPORTS BOTH 50µM AND 62.5µM MULTIMODE FIBER CABLES)
AGM732F	1000 BASE-LX SFP FIBER GBIC MODULE (WORKS WITH 9µM SINGLE MODE CABLING)
AGM733	1000 BASE-ZX SFP FIBER GBIC MODULE (WORKS WITH 9µM SINGLE MODE CABLING)
AXM751	10G BASE-SR XFP FIBER OPTIC MODULE - SHORT REACH
AXM752	10G BASE-LR XFP OPTIC MODULES - LONG REACH
AX741	10G ETHERNET XFP ADAPTER (FOR USE WITH GSM7328S/52S)
AX742	24GBPS STACKING KIT (FOR USE WITH GSM7328S/52S)

\* Except FSM726 Layer 2 Managed Switch

## VPN Firewalls

NETGEAR's ProSafe™ VPN (Virtual Private Networks) Firewalls ensure maximum privacy and security with the high-level encryption your business demands.

VPN Firewalls include built-in routers for secure connection to the Internet. Choose between a wide range of wired and wireless VPN Firewalls, equipped with 2 to 200 VPN tunnel support capability. NETGEAR® Firewalls are easy to configure and provide reliable, secure Internet connectivity.

Combined with NETGEAR's VPN client software, NETGEAR® Firewalls deliver a total solution for secure data transmission. NETGEAR's security products are VPNC-tested and certified to ensure interoperability with many other popular security products.

KEY FEATURES		
DENIAL OF SERVICE TO PREVENT INTRUDERS OR HACKERS FROM ACCESSING THE NETWORK	STATEFUL PACKET INSPECTION TO VIEW DATA PACKETS ENTERING THE NETWORK TO PREVENT VIRUSES	CONTENT FILTERING TO FILTER OUT UNWANTED INFORMATION
CREATE SECURE VPNs BETWEEN HEAD OFFICE AND REMOTE LOCATIONS AND/OR USERS	BUILT-IN 4 OR 8 PORT SWITCH FOR ETHERNET CONNECTIVITY TO OTHER NETWORK DEVICES	168-BIT 3DES IPSEC & 56-BIT DES ENCRYPTION PROTECT DATA COMMUNICATION OVER VPN
WIRELESS FIREWALLS EMPLOY HIGHEST LEVEL OF WIRELESS SECURITY WITH WPA ENCRYPTION	SNMP MANAGEMENT (FVX538, FVS338 & FVS124G)	DUAL WAN CONNECTIONS FOR FAILOVER AND LOAD BALANCING (FVX538 & FVS124G)



PART NO.	PRODUCT DESCRIPTION
FVS114	FIREWALL WITH 8 VPN IPSEC TUNNELS AND 4 PORT FAST SWITCH
FVS318	FIREWALL WITH 8 VPN IPSEC TUNNELS AND 8 PORT FAST SWITCH
FVS124G	FIREWALL WITH 25 VPN IPSEC TUNNELS, 4 PORT GIGABIT SWITCH AND DUAL WAN PORTS
FVS338	FIREWALL WITH 50 VPN IPSEC TUNNELS, 8 PORT FAST SWITCH AND DIAL BACK-UP
FVX538	FIREWALL WITH 200 VPN IPSEC TUNNELS, 8 PORT FAST SWITCH, DUAL WAN LOAD BALANCING AND DIAL BACK-UP
FWG114P	802.11G WIRELESS FIREWALL WITH 2 VPN IPSEC TUNNELS, 4 PORT FAST SWITCH AND USB PRINT SERVER
FWG318	802.11G WIRELESS FIREWALL WITH 8 VPN IPSEC TUNNELS AND 8 PORT FAST SWITCH
DGFV338	WIRELESS ADSL 2+ MODEM FIREWALL WITH 50 VPN IPSEC TUNNELS AND 8 PORT FAST SWITCH - COMING SOON
VPN01L	VPN CLIENT SOFTWARE - SINGLE LICENSE
VPN05L	VPN CLIENT SOFTWARE - 5 USER LICENSE

## SSL VPN

# Remote access to your corporate data from any PC, anytime, anywhere

With a growing number of mobile users in any organisation, providing remote access to corporate resources is becoming increasingly complicated and costly. The SSL312 is an easy-to-use browser-based, remote-access SSL VPN solution for small-to-medium-sized businesses with up to 100 users.

The SSL312 utilises SSL (Secure Sockets Layer), a mature, well-known and popular protocol in the world of secure e-commerce to provide easy access to corporate resources and files for mobile and remote users. Unlike traditional VPN solutions, the SSL312 requires no software to be loaded onto the client devices. The next page shows how an SSL312 can be employed to create a remote connectivity solution.

KEY FEATURES	
SUPPORTS UP TO 25 CONCURRENT SESSIONS	BROWSER-BASED SECURE ACCESS TO CORPORATE NETWORKS
NO CLIENT S/W REQUIRED ON USERS LAPTOPS/WIRELESS DEVICES	EASY TO USE - CONNECT USING MICROSOFT INTERNET EXPLORER OR APPLE SAFARI
USES "SECURE SOCKETS LAYER", A PROTOCOL POPULAR IN THE WORLD OF E-COMMERCE	EASY TO ADMINISTER - CUSTOMISABLE, INTUITIVE ADMINISTRATIVE INTERFACE
AUTO-CLEANS THE CACHE AFTER A SESSION HAS TERMINATED	PROVIDES GRANULAR, POLICY-BASED ACCESS CONTROL FOR ADDED SECURITY

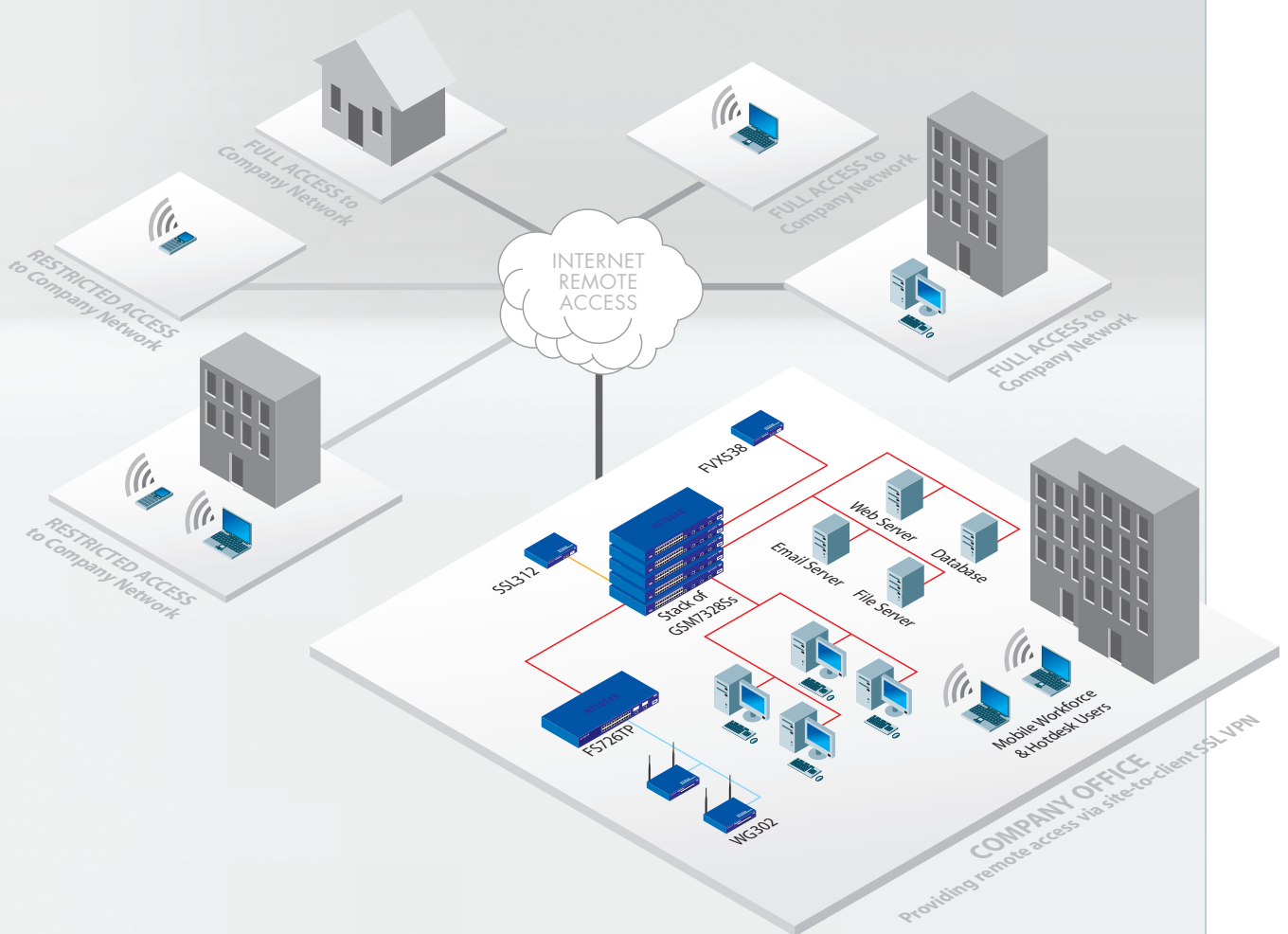


PART NO.	PRODUCT DESCRIPTION
SSL312	SSL VPN CONCENTRATOR 25

# NETWORK SOLUTION FOR REMOTE CONNECTIVITY

## Secure, Web Browser Access to Company Network & Resources

This network diagram shows an SSL312 connected to the main internal company network to provide remote users with full or restricted secure, web browser-based access to the company's applications, files and databases. Restricted access is provided to remote workers using PDAs or working from a wireless hot spot. In this scenario, full access to all company resources is granted to home workers, field staff using laptops and users at customer or partner sites.



**KEY:**

FAST ETHERNET CONNECTIVITY	GIGABIT ETHERNET CONNECTIVITY	10/100 & POE CONNECTIVITY

# NETWORK SOLUTION FOR A HEAD OFFICE

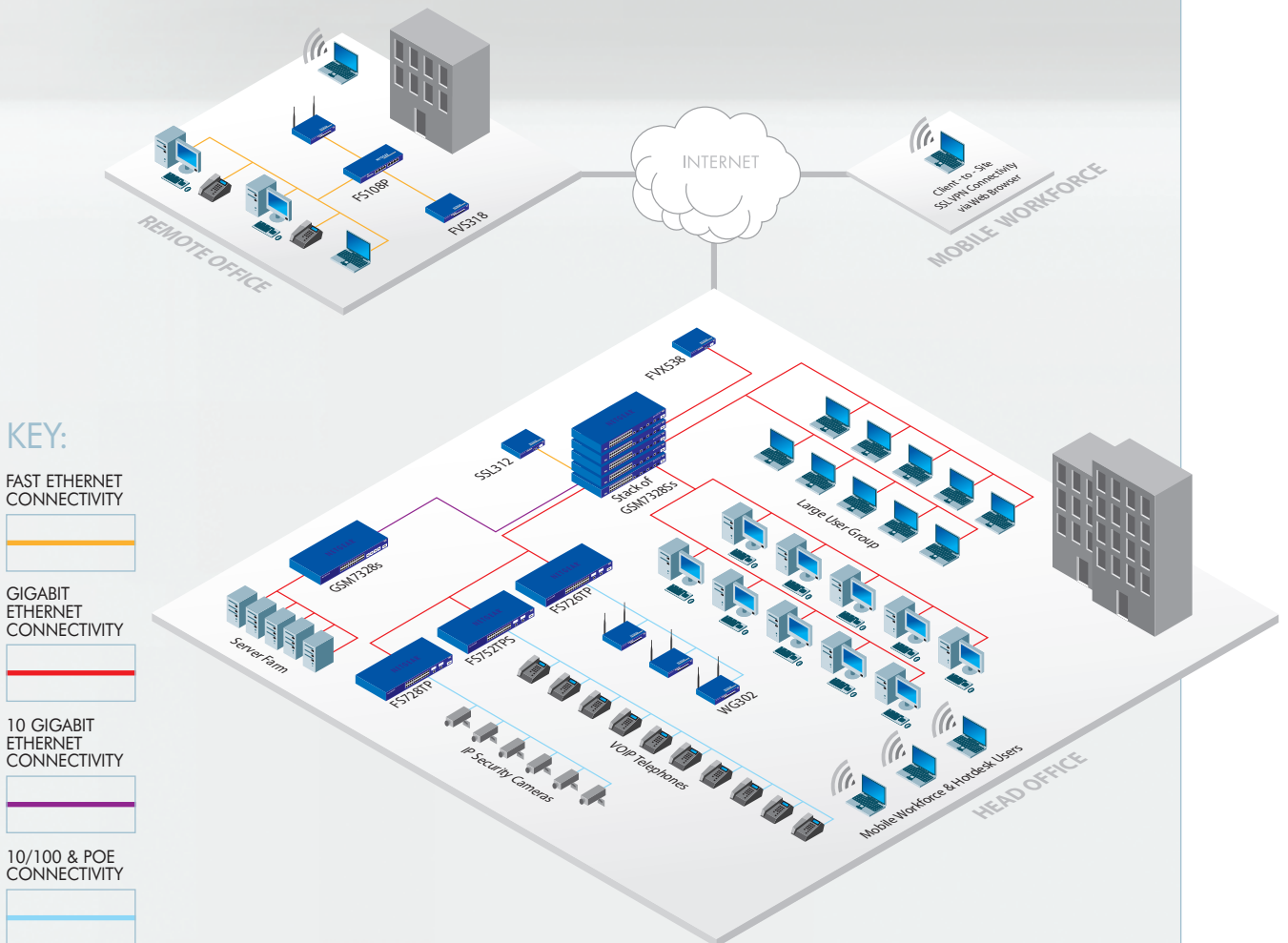
## With Connectivity to Remote Office & Mobile Staff

To effectively manage large, complex and bandwidth-demanding “head office” environments, the diagram below depicts Layer 3 Managed Stackable Switches (GSM7328S) at the core.

These Layer 3 Managed Stackable Switches support VLANs and Quality of Service, enabling this organisation - for example - to prioritise voice traffic or specific users. A 10 Gig Fiber uplink is employed to provide 10 x Gigabit throughput between the stack of GSM7328S Switches and a single GSM7328S to provide incredibly fast throughput to the company’s server farm.

Also connected to the stack of GSM7328Ss are NETGEAR’s Smart Switches with built-in PoE to power multiple Wireless Access Points, VoIP telephones and IP security cameras. PoE facilitates easier, flexible deployment, avoiding the constraint of only placing mobile devices near to AC sockets. Multiple Wireless Access Points (WG302s) complement the wired network by providing wireless coverage across the office for visitors.

The Firewall (FVX538) supports IPSec VPN, to provide regional, branch and remote offices with secure, private access to resources held on servers at the head office. An SSL VPN device (SSL312) complements the site-to-site IPSec VPN, by providing mobile users with secure, browser-based access to head office resources without the need to load client software onto every remote laptop (see Separate SSL VPN Solution Guide on Page 11).



## Wireless Access Points & Antennas

NETGEAR's Wireless Access Points are ideal for extending an existing Ethernet network to areas that cabling cannot reach or to provide easier connectivity for visitors, mobile workforce or hot desking staff. Wireless Access Points and External Antennas can be used in conjunction to boost wireless signals across a building or campus to ensure network coverage for all employees.

Deployment of Wireless Access Points is easier when they are used in conjunction with Power-over-Ethernet (PoE), available with selective NETGEAR® switches. PoE transmits electrical power to Wireless Access Points (and other mobile devices) over Ethernet cables, so that they can be positioned virtually anywhere.

### KEY FEATURES

SUPPORTS WIRELESS BRIDGING AND REPEATER MODES	HIGH-SPEED WIRELESS CONNECTIVITY (UP TO 108 MBPS IN TURBO MODE)	LOCATE ANYWHERE IN THE OFFICE WITH POWER OVER ETHERNET SUPPORT
PLENUM RATED, APPROVED TO DEPLOY ABOVE DROP CEILINGS & UNDER RAISED FLOORS	HIGHEST LEVEL OF WIRELESS SECURITY WITH WPA ENCRYPTION (802.1X & 802.11i)	SUPPORTS SNMP & ASSOCIATED NETWORK MANAGEMENT SOFTWARE SYSTEMS
QUALITY OF SERVICE FOR TRAFFIC PRIORITISATION	"ROGUE ACCESS POINT" DETECTION TO BLOCK UNAUTHORISED WIRELESS ACCESS POINTS*	WAG102 AND WAG302 SUPPORT BOTH 802.11G AND 802.11G WIRELESS FREQUENCIES

\*Currently not available with the WAG102



PART NO.	PRODUCT DESCRIPTION
WG102	802.11G WIRELESS ACCESS POINT
WG302	802.11G WIRELESS ACCESS POINT
WAG102	DUAL-BAND 802.11A/G WIRELESS ACCESS POINT
WAG302	DUAL-BAND 802.11A/G WIRELESS ACCESS POINT
ANT2409	INDOOR/OUTDOOR 9 DBI OMNI-DIRECTIONAL ANTENNA
ANT24D18	INDOOR/OUTDOOR 14 DBI PATCH PANEL DIRECTIONAL ANTENNA
ANT2405	INDOOR 5 DBI OMNI-DIRECTIONAL ANTENNA

NETGEAR® International Inc  
Greenwood House  
London Road  
Bracknell  
Berkshire  
RG12 2AA

Telephone: +44(0) 1344 458200  
Fax: +44(0) 1344 311570

[uksales@netgear.com](mailto:uksales@netgear.com)  
[www.netgear.co.uk](http://www.netgear.co.uk) [www.netgear.ie](http://www.netgear.ie)



**NETGEAR®**  
Connect with Innovation™



## Free Manuals Download Website

<http://myh66.com>

<http://usermanuals.us>

<http://www.somanuals.com>

<http://www.4manuals.cc>

<http://www.manual-lib.com>

<http://www.404manual.com>

<http://www.luxmanual.com>

<http://aubethermostatmanual.com>

Golf course search by state

<http://golfingnear.com>

Email search by domain

<http://emailbydomain.com>

Auto manuals search

<http://auto.somanuals.com>

TV manuals search

<http://tv.somanuals.com>