



NETGEAR[®]

NETGEAR GS510TP Smart Switch

Hardware Installation Guide

350 East Plumeria Drive
San Jose, CA 95134
USA

October 2011
202-10886-01
1.0

NETGEAR GS510TP Smart Switch

© 2011 NETGEAR, Inc. All rights reserved

No part of this publication may be reproduced, transmitted, transcribed, stored in a retrieval system, or translated into any language in any form or by any means without the written permission of NETGEAR, Inc.

Technical Support

Thank you for choosing NETGEAR. To register your product, get the latest product updates, get support online, or for more information about the topics covered in this manual, visit the Support website at

<http://support.netgear.com>

Phone (US & Canada only): 1-888-NETGEAR

Phone (Other Countries): Check the list of phone numbers at

http://support.netgear.com/app/answers/detail/a_id/984

Trademarks

NETGEAR, the NETGEAR logo, and Connect with Innovation are trademarks and/or registered trademarks of NETGEAR, Inc. and/or its subsidiaries in the United States and/or other countries. Information is subject to change without notice. Other brand and product names are registered trademarks or trademarks of their respective holders. © 2011 NETGEAR, Inc. All rights reserved.

Statement of Conditions

To improve internal design, operational function, and/or reliability, NETGEAR reserves the right to make changes to the products described in this document without notice. NETGEAR does not assume any liability that may occur due to the use, or application of, the product(s) or circuit layout(s) described herein.

Revision History

Publication Part Number	Version	Publish Date	Comments
202-10886-01	1.0	October 2011	First publication

Contents

About This Manual

Conventions, Formats, and Scope	5
How to Print this Manual.	6

Chapter 1 Introduction

Overview.	7
Features	8
PoE Features	8
Green Features	9
Package Contents	9

Chapter 2 Physical Description

GS510TP Front-Panel Configuration	11
GS510TP Back-Panel Configuration	12
LED Designations.	13
Port LEDs	13
System LEDs	14
Device Hardware Interfaces.	14
RJ-45 Ports.	14
Reset Button.	14
Factory Defaults Button	15

Chapter 3 Applications

Desktop Switching	17
-----------------------------	----

Chapter 4 Installation

Step 1: Preparing the Site	19
Step 2: Installing the Switch	20
Installing the Switch on a Flat Surface	20
Rack Mounting the Switch	20
Step 3: Checking the Installation	21
Step 4: Connecting Devices to the Switch	21
Step 5: Applying AC Power	22
Step 6: Managing the Switch using a Web Browser or the PC Utility.	22

Appendix A Troubleshooting

NETGEAR GS510TP Smart Switch

Troubleshooting Chart	25
Additional Troubleshooting Suggestions	26
Network Adapter Cards	26
Configuration	26
Switch Integrity	26
Auto-Negotiation	26

Appendix B Technical Specifications

Index

About This Manual

The *NETGEAR® ProSafe™ GS510TP Hardware Installation Guide* describes how to install and power on the GS510TP Smart Switch. The information in this manual is intended for readers with intermediate computer and Internet skills.

Conventions, Formats, and Scope

The conventions, formats, and scope of this manual are described in the following paragraphs:

- **Typographical Conventions.** This manual uses the following typographical conventions:

<i>Italic</i>	Emphasis, books, CDs, file and server names, extensions
Bold	User input, IP addresses, GUI screen text
Fixed	Command prompt, CLI text, code
<i>italic</i>	URL links

- **Formats.** This manual uses the following formats to highlight special messages:

Note: This format is used to highlight information of importance or special interest.

Tip: This format is used to highlight a procedure that will save time or resources.



WARNING:

Ignoring this type of note may result in a malfunction or damage to the equipment.



DANGER:

This is a safety warning. Failure to take heed of this notice may result in personal injury or death.

- **Scope.** This manual is written for the GS510TP Smart Switch according to these specifications:

Product Version	GS510TP Smart Switch
Manual Publication Date	October 2011

Note: Product updates are available on the NETGEAR, Inc. website at <http://kbserver.netgear.com/products/GS510TP.asp>.

How to Print this Manual

To print this manual, use the *Complete PDF Manual* link at the top left of any page.

- Click the Complete PDF Manual link at the top left of any page in the manual. The PDF version of the complete manual opens in a browser window.
- Click the print icon in the upper left of the window.

Tip: If your printer supports printing two pages on a single sheet of paper, you can save paper and printer ink by selecting this feature.

Introduction

1

Congratulations on the purchase of your NETGEAR® ProSafe™ GS510TP Smart Switch. The GS510TP is a supplement to the Gigabit Advanced Smart Switch family. Available as a desktop or rack-mountable. The GS510TP is a PoE-supportable low-port switch with two fiber uplinks included.

This chapter serves as an introduction to the GS510TP Smart Switch and provides the following information:

- [Overview](#)
- [Features](#)
- [Package Contents](#)

Overview

This Installation Guide is for the NETGEAR GS510TP Smart Switch. This product offers support for eight 10/100/1000 Mbps autosensing and two 1000M SFP Gigabit Ethernet switching ports.

Using Gigabit ports, high-speed connections can be made to a server or network backbone. For example:

- Linking to high-speed servers
- Providing 10/100/1000 Mbps copper connectivity

The GS510TP Smart Switch also provides the benefit of administrative management with a complete package of features for the observation, configuration, and control of the network. With a Web-based Graphical User Interface (GUI), the switch's many capabilities can be viewed and used in a simple and intuitive manner. The switch's management features include configuration for port and switch information, VLAN for traffic control, port trunking for increased bandwidth, and Class of Service (CoS) for traffic prioritization. These features provide better understanding and control of the network. Initial discovery of the switch on the network requires the Netgear Smart Control Center program, a utility that runs on a PC.

The GS510TP Smart Switch is a free-standing switch. It is IEEE-compliant and offers low latency for high-speed networking. All ports can automatically negotiate to the highest speed. This capability makes the switch ideal for environments that have a mix of Ethernet, Fast Ethernet, or Gigabit Ethernet devices. In addition, all RJ-45 ports operate in half-duplex or

full-duplex mode. The maximum segment length is 328 feet (100 meters) over Category 5 Unshielded Twisted-Pair (UTP) cable.

Features

The following list identifies the key features of the GS510TP Smart Switch:

- Eight RJ-45 10/100/1000 Mbps autosensing Gigabit Ethernet switching ports.
- Two 1000M SFP Gigabit Ethernet switching ports.
- Full NETGEAR Smart Switch functionality.
- Full compatibility with IEEE standards:
 - IEEE 802.3 CSMA/CD
 - IEEE 802.3i (10BASE-T)
 - IEEE 802.3u (100BASE-TX)
 - IEEE 802.3x (Full-duplex flow control)
 - IEEE 802.3ab (1000BASE-T)
 - IEEE 802.3at (PoE+)
 - IEEE 802.3z (1000BASE-x)
 - IEEE 802.3af (DTE power via MDI)
 - IEEE 802.3az (EEE)
- Autosensing and auto-negotiating capabilities for all ports.
- Auto Uplink™ on all ports to make the right connection.
- Automatic address learning function to build the packet-forwarding information table. The table contains up to 4K Media Access Control (MAC) addresses.
- Store-and-Forward transmission to remove bad packets from the network.
- Full-duplex IEEE 802.3x pause frame flow control.
- Active flow control to minimize packet loss and frame drops.
- Half-duplex backpressure control.
- Per port LEDs, power LED, FAN LED, and Max PoE LED.
- Standard NTGR 5 series chassis high.
- NETGEAR Green product features.
- Internal 150W open frame power supply.
- Total power budget is 130W

PoE Features

The GS510TP supports IEEE 802.3at PSE features:

- Ports 1 through 8 support IEEE 802.3at, Alternative A (MDI-X).

- PoE is enabled by default.

Green Features

The GS510TP Smart Switch supports the following power-saving features:

- The power consumption automatically adjusts based on the RJ-45 cable length.
- Each port is configured to power down automatically when the port link is down.

Package Contents

Figure 1 shows the package contents of the NETGEAR GS510TP Smart Switch.

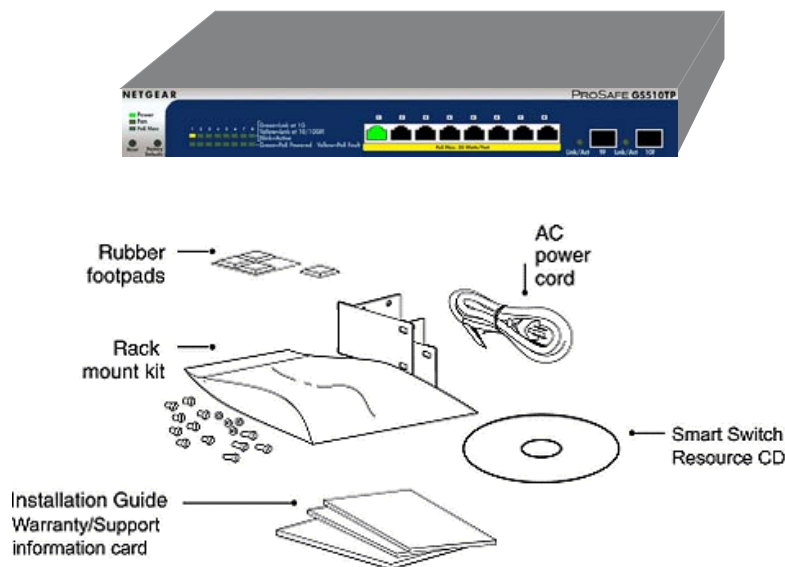


Figure 1. Package Contents

Verify that the package contains the following:

- NETGEAR GS510TP Smart Switch
- Rubber footpads for tabletop installation
- Rack mount kit
- AC power cord
- Installation guide
- Smart Switch Resource CD with the Netgear Smart Control Center and User's manual

If any item is missing or damaged, contact the place of purchase immediately.

2 Physical Description

2

This chapter describes the NETGEAR GS510TP Smart Switch hardware features. Topics include:

- *GS510TP Front-Panel Configuration*
- *LED Designations*
- *Device Hardware Interfaces*

GS510TP Front-Panel Configuration

The GS510TP has eight 10/100/1000 Mbps autosensing and two 1000 Mbps SFP Gigabit Ethernet switching ports. Each RJ-45 port is capable of sensing the line speed and negotiating the duplex mode with the link partner automatically.

Figure 2 illustrates the front panel of the NETGEAR GS510TP Smart Switch:

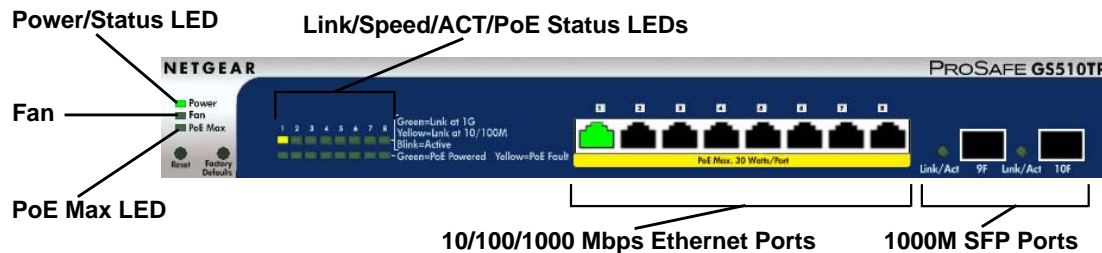


Figure 2. GS510TP Front Panel

The GS510TP front panel contains the following:

- Eight RJ-45 connectors for 10/100/1000 Mbps autosensing Gigabit Ethernet switching ports
- Two 1000M SFP Gigabit Ethernet switching ports
- Reset button to restart the device
- Recessed default reset button to restore the device back to the factory defaults
- Link, Speed, and Activity LEDs for each port
- PoE status LED for each port

- Fan LED
- PoE Max LED

GS510TP Back-Panel Configuration

Figure 3 illustrates the GS510TP back panel.



Figure 3. GS510TP Back Panel

The back panel contains the following:

- Internal 150W open frame power supply for the GS510TP.

LED Designations

Port LEDs

Table 1 describes the RJ-45 and SFP port LED designations. There are two LEDs for each RJ-45 port. Each SFP port has its own indication LED.

Table 1. Port LEDs

LED	Designation
Speed/Link/Activity	SPD/Link/ACT LED: <ul style="list-style-type: none"> • Off = No link is established on the port. • Solid Green = A valid 1000 Mbps link is established on the port. • Blinking Green = Packets transmission or reception is occurring on the port at 1000 Mbps. • Solid Yellow = A valid 10/100 Mbps link is established on the port. • Blinking Yellow = Packets transmission or reception is occurring on the port at 10/100 Mbps.
PoE Status	PoE Status LED: <ul style="list-style-type: none"> • Off = No PoE powered device (PD) connected. • Solid Green = The PoE powered device is connected and the port is supplying power successfully. • Solid Yellow = Indicates one of the following failures resulted in stopping power to that port: <ul style="list-style-type: none"> Short circuit on PoE power circuit PoE power demand exceeds power available PoE current exceeds PD's classification Out of proper voltage band (44 ~ 57 VDC)
SFP Port Indicate LED	<ul style="list-style-type: none"> • Off = No link is established on the port. • Solid Green = A valid link is established on the port. • Flashing Green = Packet transmission or reception is occurring on the port.

System LEDs

Table 2 describes the system LED designations.

Table 2. System LEDs

LED	Designation
Power/Status LED	<ul style="list-style-type: none"> • Solid Green = Power is supplied to the switch and the switch is operating normally. • Solid Yellow = The switch is booting. • Off = Power is disconnected.
PoE MAX LED	<ul style="list-style-type: none"> • Off = There is at least 7W of PoE power available for another device. • Solid Yellow = Less than 7W of PoE power is available. • Flashing Yellow = The PoE MAX LED was active in the previous two minutes.
FAN LED	<ul style="list-style-type: none"> • Solid Yellow = The fan has failed. • Off = The fan operating normally.

Device Hardware Interfaces

RJ-45 Ports

RJ-45 ports are autosensing ports. When inserting a cable into an RJ-45 port, the switch automatically ascertains the maximum speed (10, 100, or 1000 Mbps) and duplex mode (half-duplex or full-duplex) of the attached device. All ports support only unshielded twisted-pair (UTP) cable terminated with an 8-pin RJ-45 plug.

To simplify the procedure for attaching devices, all RJ-45 ports support Auto Uplink. This technology allows attaching devices to the RJ-45 ports with either straight-through or crossover cables. When inserting a cable into the switch's RJ-45 port, the switch automatically:

- Senses whether the cable is a straight-through or crossover cable.
- Determines whether the link to the attached device requires a "normal" connection (such as when connecting the port to a PC) or an "uplink" connection (such as when connecting the port to a router, switch, or hub).
- Configures the RJ-45 port to enable communications with the attached device, without requiring user intervention. In this way, the Auto Uplink technology compensates for setting uplink connections, while eliminating concern about whether to use crossover or straight-through cables when attaching devices.

Reset Button

The Smart Switch has a Reset button on the front panel to allow you to manually reboot the switch. This action is equivalent to powering the unit off and back on. The last saved configuration is loaded into the switch as it resets. To operate the Reset button, insert a

device such as a paper clip into the opening to press the recessed button. The front-panel LEDs should extinguish and light again as the switch performs its Power On Self Test (POST).

Factory Defaults Button

The Smart Switch has a Factory Defaults button on the front panel so that you can remove the current configuration and return the device to its factory settings. When you enable the Factory Defaults button, all settings including the password, VLAN settings, and port configurations are removed. To operate the Factory Defaults button, insert a device such as a paper clip into the opening to press the recessed button for two seconds.

Physical Description

Your NETGEAR GS510TP Smart Switch is designed to provide flexibility in configuring your network connections. It can be used as a stand-alone device or with 10 Mbps, 100 Mbps, and 1000 Mbps hubs and switches.

Desktop Switching

The GS510TP Smart Switch can be used as a desktop switch to build a small network that enables users to have 1000 Mbps access to a file server. With full-duplex enabled, the switch port connected to the server or PC can provide 2000 Mbps throughput.

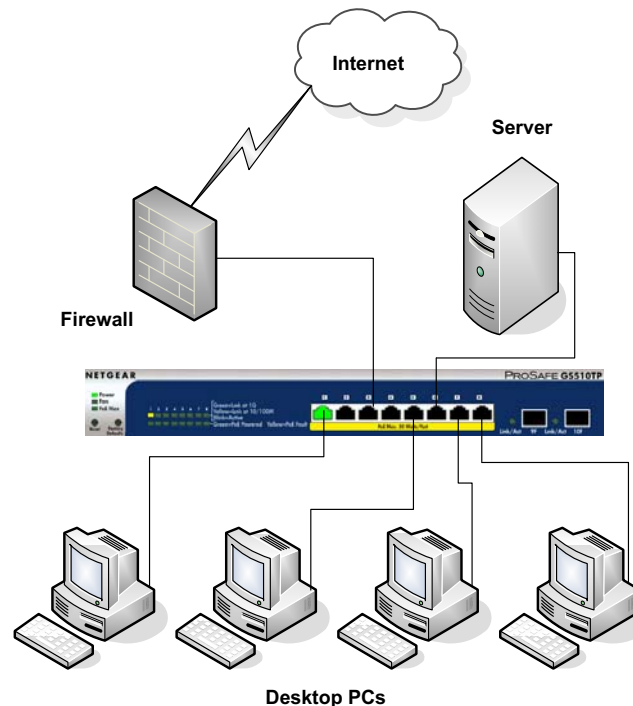


Figure 4. Desktop Switching

4 Installation

4

This chapter describes the installation procedures for your NETGEAR GS510TP Smart Switch. Switch installation involves the following steps:

Step 1: Preparing the Site

Step 2: Installing the Switch

Step 3: Checking the Installation

Step 4: Connecting Devices to the Switch

Step 5: Applying AC Power

Step 6: Managing the Switch using a Web Browser or the PC Utility

Step 1: Preparing the Site

Before you install the switch, ensure the operating environment meets the site requirements in *Table 3*.

Table 3. Site Requirements

Characteristics	Requirements
Mounting	<ul style="list-style-type: none">• Desktop installations - Provide a flat table or shelf surface.• Rack-mount installations - Use the included rack mount kit to secure the switch in the rack.
Access	Locate the switch in a position that allows access to the front-panel RJ-45 ports, view the front-panel LEDs, and access the power connector.

Table 3. Site Requirements (continued)

Characteristics	Requirements
Power source	AC power cord (included). Power specifications for the switch are shown in Appendix A . Ensure the AC outlet is not controlled by a wall switch, which can accidentally turn off power to the outlet and the switch.
Environmental	<ul style="list-style-type: none"> • Temperature - Install the switch in a dry area, with ambient temperature between 0°C and 50°C (32°F and 122°F). Keep the switch away from heat sources such as direct sunlight, warm air exhausts, hot-air vents, and heaters. • Operating humidity - The installation location should have a maximum relative humidity of 90%, non-condensing. • Ventilation - Do not restrict airflow by covering or obstructing air inlets on the sides of the switch. Keep at least 2 inches (5.08 centimeters) free on all sides for cooling. Be sure there is adequate airflow in the room or wiring closet where the switch is installed. • Operating conditions - Keep the switch at least 6 ft. (1.83m) away from nearest source of electromagnetic noise, such as a photocopy machine.

Step 2: Installing the Switch

The GS510TP Smart Switch can be used on a flat surface or mount in a rack.

Installing the Switch on a Flat Surface

The switch ships with four self-adhesive rubber footpads. Stick one rubber footpad on each of the four concave spaces on the bottom of the switch. The rubber footpads cushion the switch against shock/vibrations.

Rack Mounting the Switch

To mount the switch in a rack, attach the included rack mounting brackets to the switch. Then connect the switch to the rack, securing the mounting brackets to the rack.

Step 3: Checking the Installation

Before applying power to the switch, perform the following:

- Inspect the equipment thoroughly.
- Verify that all cables are installed correctly.
- Check cable routing to make sure cables are not damaged or creating a safety hazard.
- Ensure all equipment is mounted properly and securely.

Step 4: Connecting Devices to the Switch

The following procedure describes how to connect PCs to the switch's RJ-45 ports. The GS510TP Smart Switch contains Auto Uplink technology, which allows the attaching of devices using either straight-through or crossover cables.

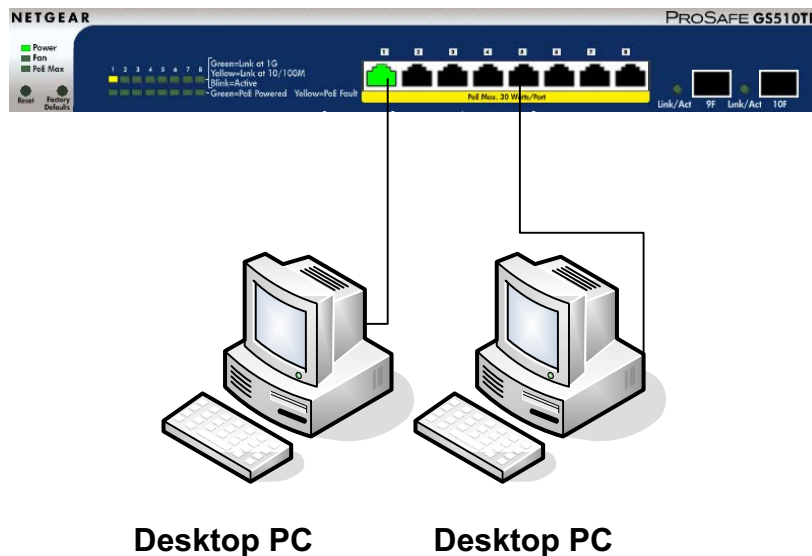


Figure 5. Connect PCs to the Switch's RJ-45 Ports

Connect each PC to an RJ-45 network port on the Switch front panel (*Figure 5*). Use Category 5 (Cat5) Unshielded Twisted-Pair (UTP) cable terminated with an RJ-45 connector to make these connections.

Note: Ethernet specifications limit the cable length between the switch and the attached device to 100 m (328 ft.).

Note: The PoE port may be considered SELV circuits, if it is not likely to require connection to an Ethernet network with outside plant routing, including campus environment; and the installation instructions clearly state that the ITE is to be connected only to PoE networks without routing to the outside plant.

Step 5: Applying AC Power

Before connecting the power cord, select an AC outlet that is not controlled by a wall switch, which can turn off power to the switch. After selecting an appropriate outlet, use the following procedure to apply AC power:

1. Connect the end of the supplied AC power cord to the power receptacle on the back of the switch.
2. Connect the AC power cord into a power source such as a wall socket or power strip.

When applying power, the Power LED on the switch's front panel illuminates.

If the Power LED does not go on, check that the power cord is plugged in correctly and that the power source is good. If this does not resolve the problem, refer to [Appendix A](#).

Step 6: Managing the Switch using a Web Browser or the PC Utility

The GS510TP Smart Switch contains software for viewing, changing, and monitoring the way it works. This management software is not required for the switch to work. The ports can be used without using the management software. However, the management software enables the setup of VLAN and Trunking features and also improves the efficiency of the switch, which results in the improvement of its overall performance as well as the performance of the network.

After powering up the switch for the first time, the Smart Switch can be configured using a Web browser or a program called Smart Control Center Utility. For more information about managing the switch, see the *Gigabit Advanced Smart Switch Series Software Administration Manual* on the Smart Switch Resource CD.

Note: When the device powers up, there is a default IP address already configured on the device. The default IP address is 192.168.0.239 and subnet mask 255.255.255.0.

Troubleshooting



This chapter provides information about troubleshooting the NETGEAR Smart Switch. Topics include the following:

- *Troubleshooting Chart*
- *Additional Troubleshooting Suggestions*

Troubleshooting Chart

The following table lists symptoms, causes, and solutions of possible problems.

Table 4. Troubleshooting Chart

Symptom	Cause	Solution
Power LED is off.	No power is received.	Check the power cord connections and the connected device. Ensure all cables used are correct and comply with Ethernet specifications.
Link LED is off or intermittent.	Port connection is not working.	Check the crimp on the connectors and make sure that the plug is properly inserted and locked into the port at both the switch and the connecting device. Ensure all cables used are correct and comply with Ethernet specifications. Check for a defective PC adapter card, cable, or port by testing them in an alternate environment where all products are functioning.
File transfer is slow or performance degradation is a problem.	Half-duplex or full-duplex setting on the switch and the connected device are not the same.	Make sure the attached device is set to auto-negotiate.

Table 4. Troubleshooting Chart (continued)

Symptom	Cause	Solution
A segment or device is not recognized as part of the network.	One or more devices are not properly connected, or cabling does not meet Ethernet guidelines.	Verify that the cabling is correct. Ensure all connectors are securely positioned in the required ports. Equipment may have been accidentally disconnected.
ACT LED is flashing continuously on all connected ports and the network is disabled.	A network loop (redundant path) has been created.	Break the loop by ensuring that there is only one path from any networked device to any other networked device.

Additional Troubleshooting Suggestions

If the suggestions in Troubleshooting Chart do not resolve the problem, refer to the troubleshooting suggestions in this section.

Network Adapter Cards

Ensure the network adapter cards installed in the PCs are in working condition and the software driver has been installed.

Configuration

If problems occur after altering the network configuration, restore the original connections and determine the problem by implementing the new changes, one step at a time. Ensure that cable distances, repeater limits, and other physical aspects of the installation do not exceed the Ethernet limitations.

Switch Integrity

If required, verify the integrity of the switch by resetting the switch. To reset the switch, remove the AC power from the switch and then reapply AC power. If the problem continues, contact NETGEAR technical support. In North America, call 1-888-NETGEAR. If you are outside of North America, please refer to the support information card included with your product.

Auto-Negotiation

The RJ-45 ports negotiate the correct duplex mode and speed if the device at the other end of the link supports auto negotiation. If the device does not support auto negotiation, the switch only determines the speed correctly and the duplex mode defaults to half-duplex.

The gigabit port on the Gigabit module negotiates speed, duplex mode, and flow control, provided that the attached device supports auto-negotiation.

B. Technical Specifications



Network Protocol and Standards Compatibility

IEEE 802.3i 10BASE-T

IEEE 802.3u 100BASE-TX

IEEE 802.3ab 1000BASE-T

IEEE 802.3x flow control

IEEE 802.3z 1000BASE-X

IEEE 802.3at DTE Power via MDI

Management

Windows 2000 + XP, Vista; Microsoft Explorer 6.0 or higher

IEEE 802.1Q VLAN

IEEE 802.3ad Link Aggregation

IEEE 802.1D Spanning Tree Protocol

IEEE 802.1s Multiple Spanning Trees Protocol

IEEE 802.1w Rapid Spanning Tree Protocol

IEEE 802.1X Port Security

IEEE 802.3AB LLDP

SNMP v1, v2c, and v3

HTTP and HTTPS

Port Mirroring (RX, TX, and Both)

IGMP Snooping v1/v2/v3

IEEE 802.1p Class of Service (CoS)

SNTP (Simple Network Time Protocol) 2 servers. Disabled by default.

Supports 9K Jumbo Frame Size

Protected Port

IP and MAC ACL

Green feature (Auto power down and Short cable power saving)

DoS protection

Interface

Eight RJ-45 connectors for 10BASE-T, 100BASE-TX, and 1000BASE-T (Auto Uplink™ on all ports)

Two SFP slots for SFP modules

LEDs

Per RJ-45 port: Speed/Link/Activity

Per SFP port: SFP indicator

Per device: Power

Per device: Fan

Per device: Max PoE

Performance Specifications

Forwarding modes: Store-and-forward

Bandwidth: 20 Gbps

Address database size: 4K media access control (MAC) addresses per system

Mean Time Between Failure (MTBF): 458,124 hours at 25°C

Power Supply

Internal 150W open frame power supply

PoE Output

PoE total output power is 130 Watts

Physical Specifications

Dimensions 328 x 169 x 43 mm (12.91 x 6.65 x 1.7 in)

Weight: 1680g (3.7 lb)

Environmental Specifications

Operating temperature: 0°C to 50°C (32°F to 122°F)

Operating humidity: 10% to 90% maximum relative humidity, noncondensing

Storage temperature: -20°C to 70°C (-4 to 158°F)

Storage humidity: 5% to 95% maximum relative humidity, noncondensing

Electromagnetic Emissions

FCC Class A

CE Class A: Includes EN55022 (CISPR 22), 55024, and 50082-1

VCCI Class A

C-Tick

KCC

CCC

Safety

UL/cUL

CE (includes EN60950-1)

CB

Index

Numerics

8-pin [14](#)

A

Applying AC Power [22](#)

Auto Uplink [14](#)

Auto-negotiating [8](#)

Autosensing [8](#), [14](#)

B

Backpressure [8](#)

C

Category 5 Unshielded Twisted-Pair [8](#)

Checking the Installation [21](#)

Class of Service [7](#)

Connecting Devices to the Switch [21](#)

Copper [7](#)

Crossover [14](#)

D

Default IP Address [23](#)

Default Reset Button [11](#)

Desktop Switching [17](#)

Device Hardware Interfaces [14](#)

Duplex Mode [14](#)

E

Example of Desktop Switching [17](#)

F

Factory Default Button [14](#), [15](#)

Factory Defaults [11](#)

Flat Surface [20](#)

Full-duplex [8](#)

G

Gigabit Ports [7](#)

H

High-speed Servers [7](#)

I

IEEE 802.3i [8](#)

IEEE 802.3x [8](#)

IEEE Standards [8](#)

IEEE-compliant [7](#)

Installation Guide [9](#)

Installing the Switch [20](#)

L

LED Designations [13](#)

Low Latency [7](#)

M

MAC [8](#)

Media Access Control [8](#)

N

Netgear Smart Control Center Utility [7](#)

O

Operating Conditions [20](#)

Operating Environment [19](#)

Operating humidity [20](#)

Overview [7](#)

P

Package Contents [9](#)

Pause Frame Flow Control [8](#)

Port LEDs [13](#)

Power cord [9](#)

Preparing the Site **19**

R

Rack-mount Kit **9**

Reset Button **11**

RJ-45 **7**

RJ-45 Ports **14**

Rubber footpads **9, 20**

S

Site Requirements **19**

Smart Switch Resource CD **9**

Straight-through **14**

System LEDs **14**

T

technical support **2**

Temperature **20**

trademarks **2**

Traffic Control **7**

Troubleshooting Chart **25**

U

User Intervention **14**

User's Manual **9**

UTP **21**

V

Ventilation **20**

VLAN **7**

W

Web-based Graphical User Interface **7**

Free Manuals Download Website

<http://myh66.com>

<http://usermanuals.us>

<http://www.somanuals.com>

<http://www.4manuals.cc>

<http://www.manual-lib.com>

<http://www.404manual.com>

<http://www.luxmanual.com>

<http://aubethermostatmanual.com>

Golf course search by state

<http://golfingnear.com>

Email search by domain

<http://emailbydomain.com>

Auto manuals search

<http://auto.somanuals.com>

TV manuals search

<http://tv.somanuals.com>