

NETGEAR®

Installation Guide

5-Port Home Theater & Gaming Network Switch GS605AV

Estimated installation time: 5-10 minutes

Package Contents

The package includes:

- 5-Port Home Theater & Gaming Network Switch GS605AV
- Power adapter
- *Installation Guide* (this document)
- Warranty/Support information card



Prepare to Install the Switch

Decide where you want to place the switch. Find a flat horizontal surface such as a table, desk or shelf.

Make sure the selected location is:

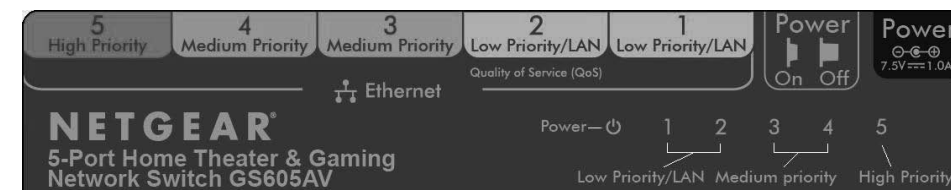
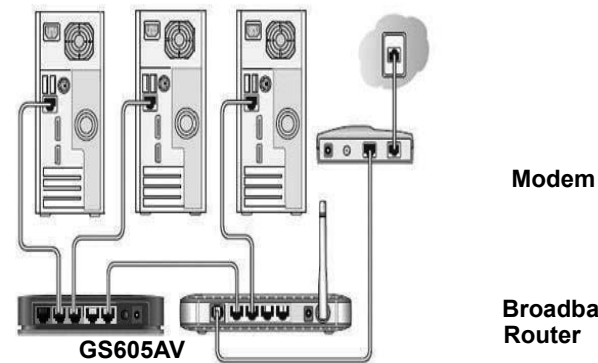
- Not in direct sunlight or near a heater or heating vent.
- Not cluttered or crowded. There should be at least 2 inches (5 cm) of clear space on all sides of the switch.
- Well ventilated (especially if it is in a closet).

Note: The switch is not designed to be stacked on top of other devices.

Depending on the speed of your network devices, you need a Category 3 (10 Mbps), Category 5 (100 Mbps), or Category 5e (1000 Mbps) Ethernet cable with RJ-45 connectors for each device you want to connect to the switch. Each Ethernet cable must be less than 328 feet (100 meters).

Install the Switch and Connect the Other Devices

1. Place the switch on a flat surface.
2. For each device, insert one end of an Ethernet cable into the port in the device and insert the other end into one of the Ethernet ports on the switch. If you have more devices to connect than the number of ports on the switch, connect the devices to another switch or hub and then connect that switch or hub to this switch.
3. If you add devices using another switch or hub, make sure the QoS category of the devices match the GS605AV port used by the switch or hub.

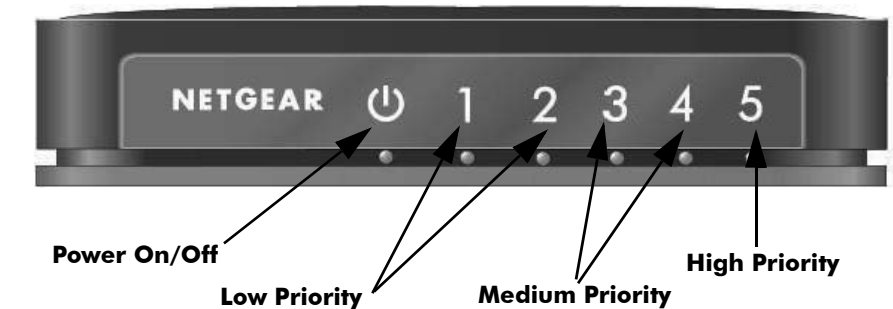


High priority port: dark green
 Medium priority ports: light green
 Low priority ports: yellow

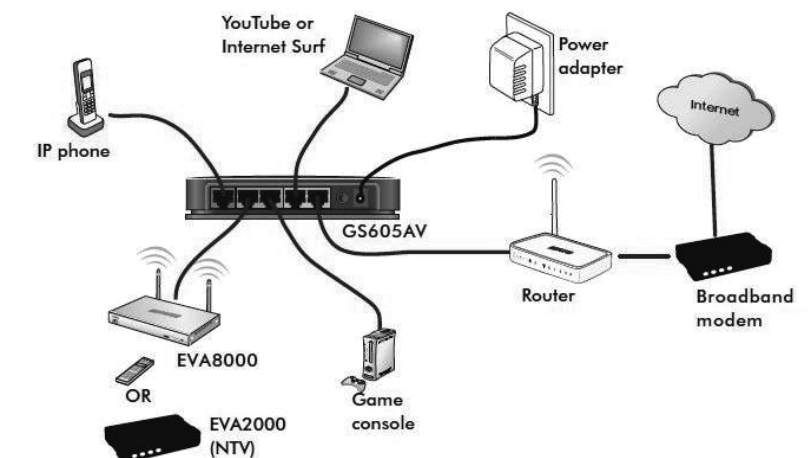
Note: The GS605AV will optimize audio/video streaming prioritization if it can recognize the pattern. If the GS605AV cannot recognize the pattern, you still can use port-based QoS to manually configure priority for your devices.

4. Connect the power adapter cord into the back of the switch and then plug the adapter into a power source (such as a wall socket or power strip).
5. Check the LEDs to confirm that the switch is connected correctly.
 - The Power LED is lit.
 - Each port on the back has associated with it a bicolor LED on the front.
 - Green: 1000 Mbps link
 - Amber: 10 Mbps or 100 Mbps link
 - Blinking: Activity

Note: If any light does not operate as indicated, go to the Troubleshooting section.



Below is a possible GS605AV configuration. Connect either port 1 or 2 (yellow port) to the LAN port of your router. Connect your latency sensitive device (IP phone) to port 5 (dark green port).



Technical Specifications

Technical Specifications	
Standards compatibility	Specifications IEEE 802.3i 10BASE-T Ethernet, IEEE 802.3u, 100BASE-TX Fast Ethernet, IEEE 802.3ab 1000BASE-T Gigabit Ethernet, IEEE 802.3x Flow Control, IEEE 802.1p Priority Tags; Jumbo frame (up to 9216 bytes); compatible with Windows®, Mac® OS, NetWare™, Linux®
Network interface	RJ-45 connector for 10BASE-T, 100BASE-TX, or 1000BASE-T Ethernet interface
DC Power	7.5W max and 7.5V @1A DC input
Power consumption	2.7W (max)
Physical dimensions (W x D x H)	5.40 x 4.01 x 1.30 in (137 x 102 x 33 mm)
Weight	0.204 Kg (0.45 lbs)
Operating temperature	0 to 40°C (32 to 104°F)
Operating humidity	10% to 90% relative humidity, noncondensing
Electromagnetic compliance	FCC Part 15, Class B; VCCI Class B; C-Tick Class B; CE Class B, including EN 55022 and EN 55024
Safety agency approvals	CE mark
Port-based QoS	Dark green RJ45 connector: highest priority Light green RJ45 connector: medium priority Yellow RJ45 connector: lowest priority
ACL rules (64-entries)	Prioritize audio/video applications
Green mode	Auto power-down mode saves energy when port is unused Auto green mode detects cable length and adjusts power usage
Address database size	8K
Packet buffer memory	128 KB
MAC address aging	300 sec
Switch bandwidth	10 Gbps
Forwarding mode	Store-and-Forward

Technical Specifications	
Performance Specifications	
Frame filter rate	14,880 frames/sec max for 10M port 148,800 frames/sec max for 100M port 1,488,000 frames/sec for 1000M port
Frame forward rate	14,880 frames/sec max for 10M port 148,800 frames/sec max for 100M port 1,488,000 frames/sec max for 1000M port
Network latency (using 1500-byte packets)	10Mbps: 34us max 100Mbps: 5.5us max 1000Mbps: 3us max

VCCI Class B Statement

この装置は、クラスB情報技術装置です。この装置は、家庭環境で使用することを目的としていますが、この装置がラジオやテレビジョン受信機に近接して使用されると、受信障害を引き起こすことがあります。取扱説明書に従って正しい取り扱いをして下さい。 VCCI-B

FCC Statement

This device complies with part 15 of the FCC Rules and Canada ICES-003. Operation is subject to the following two conditions: (1) this device may not cause harmful interference, and (2) this device must accept any interference received, including interference that may cause undesired operation.

Troubleshooting

The Power light is not lit.

The switch has no power.

- Make sure that the power cord is correctly connected to the switch.
- Make sure that the power adapter is connected to a functioning power outlet. If it is in a power strip, make sure that the power strip is turned on. If the socket is controlled by a light switch, make sure that the switch is in the on position.
- Make sure that you are using the NETGEAR power adapter supplied with your switch.

The Port number light is not lit for a connected device or stays on continuously.

There is a hardware connection problem.

- Make sure that the cable connectors are securely plugged in at the switch and the device.
- Make sure that the connected device is turned on.
- If the Ethernet cable is connected to a NIC or other Ethernet adapter, make sure that the card or adapter is installed correctly and is working.
- Make sure that the cable is less than 328 feet (100 meters).
- Make sure that you use a high quality cable, especially for the gigabit connection.

Technical Support

Thank you for selecting NETGEAR products.

After completing the Smart Wizard configuration assistant, locate the serial number on the bottom label of your product, and use it to register your product at <http://www.NETGEAR.com/register>.

Registration on the website or over the phone is required before you can use our telephone support service. The phone numbers for worldwide regional customer support centers are on the Warranty and Support Information card that came with your product.

Go to <http://kbserver.netgear.com> for product updates and Web support. GPL may be included in this product; go to <ftp://downloads.netgear.com/files/GPLnotice.pdf> to view the GPL license agreement.



This symbol was placed in accordance with the European Union Directive 2002/96 on the Waste Electrical and Electronic Equipment (the WEEE Directive). If disposed of within the European Union, this product should be treated and recycled in accordance with the laws of your jurisdiction implementing the WEEE Directive.

© 2009 by NETGEAR, Inc. All rights reserved. NETGEAR and the NETGEAR logo are registered trademarks of NETGEAR, Inc. in the United States and/or other countries. Other brand and product names are trademarks or registered trademarks of their respective holders. Information is subject to change without notice.



201-12099-01



November 2009

Free Manuals Download Website

<http://myh66.com>

<http://usermanuals.us>

<http://www.somanuals.com>

<http://www.4manuals.cc>

<http://www.manual-lib.com>

<http://www.404manual.com>

<http://www.luxmanual.com>

<http://aubethermostatmanual.com>

Golf course search by state

<http://golfingnear.com>

Email search by domain

<http://emailbydomain.com>

Auto manuals search

<http://auto.somanuals.com>

TV manuals search

<http://tv.somanuals.com>