

GS716T/GS724T Hardware Installation Guide

NETGEAR®

NETGEAR, Inc.
350 East Plumeria Drive
San Jose, California 95134 USA

202-10510-02
January 2011
v1.0

© 2007, 2008, 2009 by NETGEAR, Inc. All rights reserved.

Trademarks

NETGEAR, the NETGEAR logo, and Auto Uplink are trademarks or registered trademarks of NETGEAR, Inc. Microsoft, Windows, and Windows NT are registered trademarks of Microsoft Corporation. Other brand and product names are registered trademarks or trademarks of their respective holders. Portions of this document are copyright Intoto, Inc.

Statement of Conditions

In the interest of improving internal design, operational function, and/or reliability, NETGEAR reserves the right to make changes to the products described in this document without notice.

NETGEAR does not assume any liability that may occur due to the use or application of the product(s) or circuit layout(s) described herein.

Certificate of the Manufacturer/Importer

It is hereby certified that the Smart Switch has been suppressed in accordance with the conditions set out in the BMPT-AmtsblVfg 243/1991 and Vfg 46/1992. The operation of some equipment (for example, test transmitters) in accordance with the regulations may, however, be subject to certain restrictions. Please refer to the notes in the operating instructions.

The Federal Office for Telecommunications Approvals has been notified of the placing of this equipment on the market and has been granted the right to test the series for compliance with the regulations.

Product and Publication Details

Model Number:	GS716T and GS724T
Publication Date:	January 2011
Product Family:	GS716T/GS724T Series Smart Switch
Product Name:	Smart Switch
Home or Business Product:	Business
Language:	English
Publication Part Number:	202-10510-02
Publication Version Number:	1.0

Contents

GS716T/GS724T Hardware Installation Guide

About This Manual

Conventions, Formats and Scope	v
Revision History	vi

Chapter 1

Introduction

Overview	1-1
Features	1-2
Package Contents	1-3

Chapter 2

Physical Description

GS716T Front and Back Panel Configuration	2-5
GS724T Front and Back Panel Configuration	2-6
LED Designations	2-7
Port LEDs	2-7
System LEDs	2-8
Device Hardware Interfaces	2-8
RJ-45 Ports	2-8
SFP GBIC Module	2-9
Factory Defaults Button	2-9

Chapter 3

Applications

Desktop Switching	3-11
-------------------------	------

Chapter 4

Installation

Step 1: Preparing the Site	4-13
Step 2: Installing the Switch	4-14
Installing the Switch on a Flat Surface	4-14
Installing the Switch in a Rack	4-14

Step 3: Checking the Installation	4-15
Step 4: Connecting Devices to the Switch	4-16
Step 5: Installing an SFP GBIC Module	4-16
Step 6: Applying AC Power	4-17
Step 7: Managing the Switch using a Web Browser or the PC Utility	4-18

Appendix A

Troubleshooting

Troubleshooting Chart	A-19
Additional Troubleshooting Suggestions	A-20
Network Adapter Cards	A-20
Configuration	A-20
Switch Integrity	A-20
Auto-Negotiation	A-21

Appendix B

Technical Specifications

Index

About This Manual

The *NETGEAR® ProSafe™ GS716T/GS724T Hardware Installation Guide* describes how to install, configure and troubleshoot the Smart Switch. The information in this manual is intended for readers with intermediate computer and Internet skills.

Conventions, Formats and Scope


The conventions, formats, and scope of this manual are described in the following paragraphs:


- **Typographical Conventions.** This manual uses the following typographical conventions:

<i>Italic</i>	Emphasis, books, CDs, file and server names, extensions
Bold	User input, IP addresses, GUI screen text
Fixed	Command prompt, CLI text, code
<i>italic</i>	URL links

- **Formats.** This manual uses the following formats to highlight special messages:

	Note: This format is used to highlight information of importance or special interest.
---	--

	Tip: This format is used to highlight a procedure that will save time or resources.
---	--

	Warning: Ignoring this type of note may result in a malfunction or damage to the equipment.
---	--



Danger: This is a safety warning. Failure to take heed of this notice may result in personal injury or death.

- **Scope.** This manual is written for the Smart Switch according to these specifications:

Product Version	Smart Switch
Manual Publication Date	January 2011



Note: Product updates are available on the NETGEAR, Inc. website at <http://kbserver.netgear.com/main.asp>.

Revision History

Part Number	Version Number	Date	Description
202-10510-02	1.0	January 2011	Initial release

Chapter 1

Introduction

Congratulations on the purchase of the NETGEAR Smart Switch. The NETGEAR Smart Switch is a state-of-the-art, high-performance, IEEE-compliant network solution designed for users who require a large number of ports and want the power of Gigabit connectivity to eliminate bottlenecks, boost performance, and increase productivity. To simplify installation, the switch is shipped ready for use out of the box.

This chapter serves as an introduction to the Smart Switch and provides the following information:

- [Overview](#)
- [Features](#)
- [Package Contents](#)

Overview

This Installation Guide is for the following NETGEAR Smart Switches:

- GS716T – This product offers support for 16 ports of 10/100/1000 Mbps and two Form-factor slots, which support 1000 (1000BASE-SX/LX)/100 Mbps Small Form-factor Pluggable (SFP).
- GS724T – This product offers support for 24 ports of 10/100/1000 and two Form-factor slots, which support 1000 (1000BASE-SX/LX)/100 Mbps SFP.

Using Gigabit ports, high-speed connections can be made to a server or network backbone. For example:

- Linking to high-speed servers
- Providing 10/100/1000 Mbps copper and fiber connectivity

The Smart Switch also provides the benefit of administrative management with a complete package of features for the observation, configuration, and control of the network. With a Web-based Graphical User Interface (GUI), the switch's many capabilities can be viewed and used in a simple and intuitive manner. The switch's management features include configuration for port and switch information, VLAN for traffic control, port trunking for increased bandwidth, and Class of

Service (CoS) for traffic prioritization. These features provide better understanding and control of the network. Initial discovery of the switch on the network requires the Smart Control Center program, a utility that runs on a PC.

The Smart Switch can be free-standing, or rack mounted in a wiring closet or equipment room. It is IEEE-compliant and offers low latency for high-speed networking. All ports can automatically negotiate to the highest speed. This capability makes the switch ideal for environments that have a mix of Ethernet, Fast Ethernet, or Gigabit Ethernet devices. In addition, all RJ-45 ports operate in half-duplex or full-duplex mode. The maximum segment length is 328 feet (100 meters) over Category 5 Unshielded Twisted-Pair (UTP) cable, but much longer for fiber connections using SFP GBIC modules.

Features

The following list identifies the key features of the NETGEAR Smart Switch.

- 16/24 RJ-45 10/100/1000 Mbps auto sensing Giga switching ports.
- 2 Small Form-factor Pluggable (SFP) GBIC slots which function as combo ports. Combo ports are single ports with two physical connections, SFP fiber and RJ-45 copper. The RJ-45 copper ports corresponding to the Combo ports are the last four 10/100/1000 Mbps auto sensing Giga switching ports on each device. If both devices are plugged in, the fiber connection is active, with fiber port taking priority if both are connected. The following SFP types are supported:
 - 1000BASE-SX
 - 1000BASE-LX
 - 100BASE-FX
- The devices support full NETGEAR Smart Switch functionality.
- The devices provide full compatibility with IEEE standards:
 - IEEE 802.3i, (10BASE-T)
 - IEEE 802.3u (100BASE-TX, 100BASE-FX)
 - IEEE 802.3x (Full-duplex flow control)
 - IEEE 802.3ab (1000BASE-T)
 - IEEE 802.3z (1000BASE-X)
- Auto-sensing and auto-negotiating capabilities for all ports.
- Auto Uplink™ on all ports to make the right connection.

- Automatic address learning function to build the packet-forwarding information table. The table contains up to 8K Media Access Control (MAC) addresses.
- Full-duplex and half-duplex functions for all 10/100/1000 Mbps ports.
- Store-and-Forward transmission to remove bad packets from the network.
- Full-duplex IEEE 802.3x pause frame flow control.
- Active flow control to minimize packet loss/frame drops.
- Half-duplex back-pressure control.
- Per port LEDs, System LEDs.
- Standard 1U high, rack-mountable 17-inch chassis.

Package Contents

Figure 1-1 shows the package contents of the NETGEAR GS716T and GS724T Series Smart Switch.

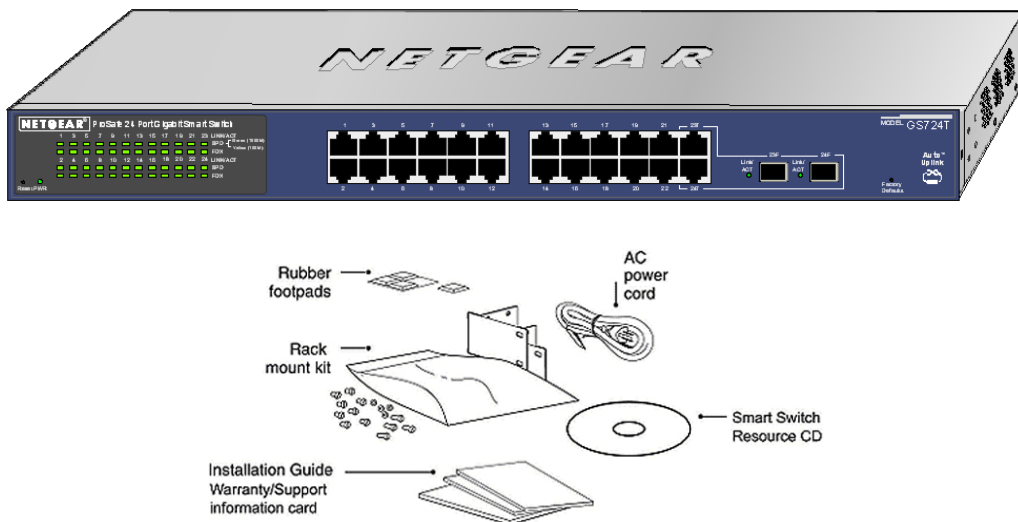


Figure 1-1

Verify that the package contains the following:

- NETGEAR Smart Switch
- Rubber footpads for tabletop installation
- Power cord
- Rack-mount kit for installing the switch in a 19-inch rack
- Installation guide
- Smart Switch Resource CD with Smart Control Center and User's manual

If any item is missing or damaged, contact the place of purchase immediately.

Chapter 2

Physical Description

This chapter describes the NETGEAR Smart Switch hardware features. Topics include:

- [GS716T Front and Back Panel Configuration](#)
- [GS724T Front and Back Panel Configuration](#)
- [LED Designations](#)
- [Device Hardware Interfaces](#)

GS716T Front and Back Panel Configuration

The GS716T is a 24-port 10/100/1000 Mbps + 2 SFP Combo ports Smart Switch. Every RJ-45 port is capable of sensing the line speed and negotiating the operation duplex mode with the link partner automatically

Figure 2-1 illustrates the NETGEAR GS716T Smart Switch front panel:

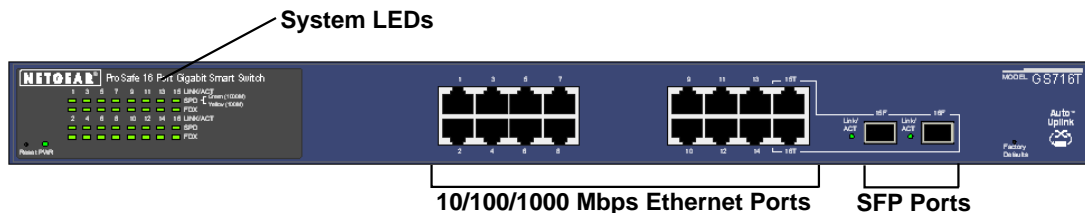


Figure 2-1

The front panel contains the following:

- 16 RJ-45 connectors for 10/100/1000 Mbps auto sensing Gigabit Ethernet switching ports.
- Two SFP slots for SFP modules supporting 1000 (1000BASE-SX/LX)/100 Mbps SFP.
- Reset button to restart the device.
- Recessed default reset button to restore the device back to the factory defaults.
- Port LEDs

- System LEDs

Figure 2-2 illustrates the NETGEAR GS716T Smart Switch back panel:



Figure 2-2

The back panel contains the following:

- A 100-240VAC/50-60 Hz universal input, which is a standard AC power receptacle for accommodating the supplied power cord.

GS724T Front and Back Panel Configuration

The GS724T is a 24-port 10/100/1000 Mbps Smart Switch + 2 SFP Combo ports switch. Every RJ-45 port is capable of sensing the line speed and negotiating the operation duplex mode with the link partner automatically

Figure 2-3 illustrates the NETGEAR GS724T Smart Switch front panel:

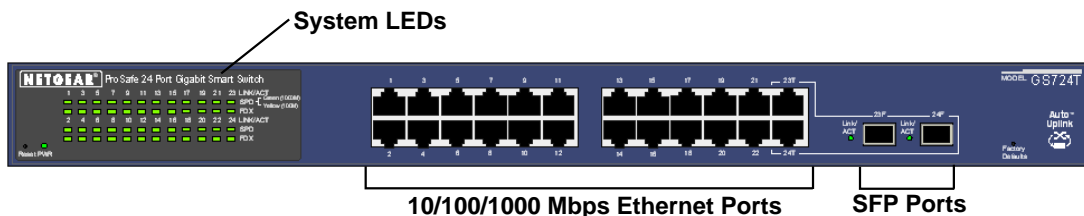


Figure 2-3

The front panel contains the following:

- 24 RJ-45 connectors for 10/100/1000 Mbps auto-sensing Gigabit Ethernet switching ports.
- Two slots for SFP slots for SFP modules supporting 1000 (1000BASE-SX/LX)/100 Mbps SFP.
- Reset button to restart the device.
- Recessed default reset button to restore the device back to the factory defaults.

- System LEDs

Figure 2-4 illustrates the NETGEAR GS724T Smart Switch back panel:



Figure 2-4

The back panel contains the following:

- A 100-240VAC/50-60 Hz universal input, which is a standard AC power receptacle for accommodating the supplied power cord.

LED Designations

Port LEDs

The following table describes the port LED designations.

Table 2-1. Port LEDs

Port	LED	Designation
16/24-10/100/1000 Mbps Ports - 3 LEDs per port	LINK/ACT SPD	<ul style="list-style-type: none"> • Solid Green - A valid 1000 Mbps link is established on the port. • Flashing Green - Packet transmission or reception is occurring on the port at 1000 Mbps. • Solid Yellow - A valid 10/100 Mbps link is established on the port. • Flashing Yellow - Packet transmission or reception is occurring on the port at 10/100 Mbps. • Off - No 10/100 Mbps link is established on the port.
	FDX	<ul style="list-style-type: none"> • Solid Green - Full-duplex link is established on the port. • Off - No full-duplex or half-duplex link is established on the port.

Table 2-1. Port LEDs (continued)

Port	LED	Designation
2 SFP Ports - 1 LED per port	SFP LINK/ACT	<ul style="list-style-type: none">• Solid Green - A valid 1000 Mbps SFP module link is established on the port.• Flashing Green - Packets transmission or reception is occurring on the port at 1000 Mbps.• Solid Yellow - A valid 100 Mbps SFP module link is established on the port.• Flashing Yellow - Packets transmission or reception is occurring on the port at 100 Mbps.• Off - No SPD link is established on the port.

System LEDs

The following table describes the system LED designations.

Table 2-2. System LEDs

LED	Designation
Power LED	<ul style="list-style-type: none">• Solid Green - Power is supplied to the switch and is operating normally.• Off - Power is disconnected.

Device Hardware Interfaces

RJ-45 Ports

RJ-45 ports are auto-sensing ports. When inserting a cable into an RJ-45 port, the switch automatically ascertains the maximum speed (10, 100, or 1000 Mbps) and duplex mode (half-duplex or full-duplex) of the attached device. All ports support only unshielded twisted-pair (UTP) cable terminated with an 8-pin RJ-45 plug.

To simplify the procedure for attaching devices, all RJ-45 ports support Auto Uplink. This technology allows attaching devices to the RJ-45 ports with either straight-through or crossover cables. When inserting a cable into the switch's RJ-45 port, the switch automatically:

- Senses whether the cable is a straight-through or crossover cable.

- Determines whether the link to the attached device requires a “normal” connection (such as when connecting the port to a PC) or an “uplink” connection (such as when connecting the port to a router, switch, or hub).
- Configures the RJ-45 port to enable communications with the attached device, without requiring user intervention. In this way, the Auto Uplink technology compensates for setting uplink connections, while eliminating concern about whether to use crossover or straight-through cables when attaching devices.

SFP GBIC Module

The GBIC module bays accommodate standard SFP GBIC modules, such as the AGM731F, AGM732F, or AGM733 from NETGEAR, allowing fiber connections on the network. The module bay is a combo port, sharing a connection with an RJ-45 port. Being a combo port, only one type of connection can be active at any given time. For example, both copper and fiber port cannot be used at the same time. If both connectors are plugged in at the same time, the fiber port will be active.

The SFP GBIC bay accommodates a standard SFP GBIC module.

Factory Defaults Button

The Smart Switch has a Factory Default button so that you can remove the current configuration and return the device to its factory settings. When you enable the Factory Default button, all settings, including the password, VLAN settings and port configurations will be removed.

Chapter 3

Applications

Your NETGEAR Smart Switch is designed to provide flexibility in configuring your network connections. It can be used as a stand-alone device or with 10 Mbps, 100 Mbps, and 1000 Mbps hubs and switches.

Desktop Switching

The NETGEAR Smart Switch can be used as a desktop switch to build a small network that enables users to have 1000 Mbps access to a file server. With full-duplex enabled, the switch port connected to the server or PC can provide 2000 Mbps throughput.

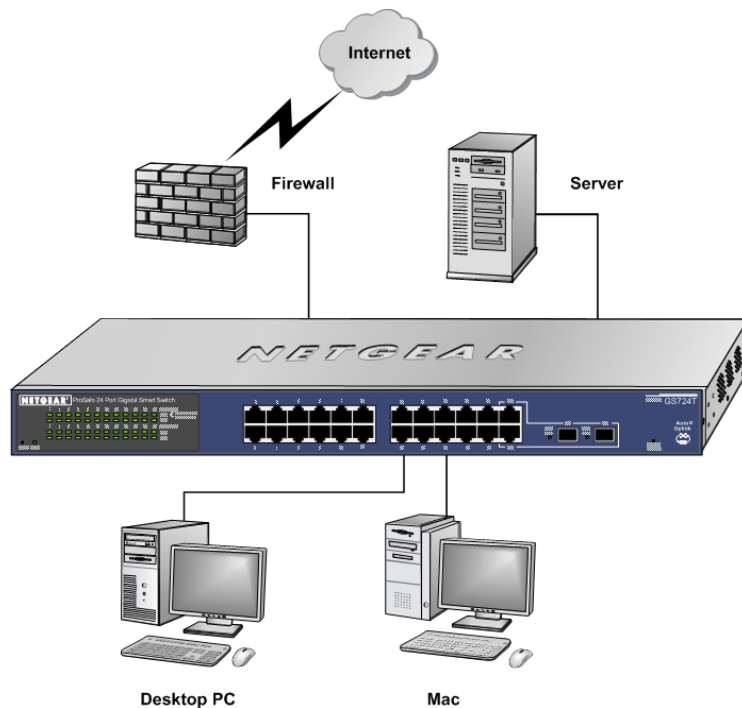


Figure 3-1

Chapter 4 Installation

This chapter describes the installation procedures for your NETGEAR Smart Switch. Switch installation involves the following steps:

Step 1: Preparing the Site

Step 2: Installing the Switch

Step 3: Checking the Installation

Step 4: Connecting Devices to the Switch

Step 5: Installing an SFP GBIC Module

Step 6: Applying AC Power

Step 7: Managing the Switch using a Web Browser or the PC Utility

Step 1: Preparing the Site

Before you installing the switch, ensure the operating environment meets the operating environment requirements in the following table.

Table 4-1. Site Requirements

Characteristics	Requirements
Mounting	<ul style="list-style-type: none">• Desktop installations - Provide a flat table or shelf surface.• Rack-mount installations - Use a 17-inch (48.3-centimeter) EIA standard equipment rack that is grounded and physically secure. The rack-mount kit supplied with the switch is also required.
Access	Locate the switch in a position that allows access to the front panel RJ-45 ports, view the front panel LEDs, and access power connector.

Table 4-1. Site Requirements (continued)

Characteristics	Requirements
Power source	Provide a power source within 6 feet (1.8 meters) of the installation location. Power specifications for the switch are shown in Appendix A . Ensure the AC outlet is not controlled by a wall switch, which can accidentally turn off power to the outlet and the switch.
Environmental	<ul style="list-style-type: none">• Temperature - Install the switch in a dry area, with ambient temperature between 0 and 55°C (32 and 131°F). Keep the switch away from heat sources such as direct sunlight, warm air exhausts, hot-air vents, and heaters.• Operating humidity - The installation location should have a maximum relative humidity of 90%, non-condensing.• Ventilation - Do not restrict airflow by covering or obstructing air inlets on the sides of the switch. Keep at least 2 inches (5.08 centimeters) free on all sides for cooling. Be sure there is adequate airflow in the room or wiring closet where the switch is installed.• Operating conditions - Keep the switch at least 6 ft. (1.83 m) away from nearest source of electromagnetic noise, such as a photocopier machine.

Step 2: Installing the Switch

The NETGEAR Smart Switch can be installed on a flat surface or in a standard 19-inch rack.

Installing the Switch on a Flat Surface

The switch ships with four self-adhesive rubber footpads. Stick one rubber footpad on each of the four concave spaces on the bottom of the switch. The rubber footpads cushion the switch against shock/vibrations.

Installing the Switch in a Rack

To install the switch in a rack, use the following procedure (and refer to [Figure 4-1](#)). To perform this procedure, the 17-inch rack-mount kit supplied with switch is required.

1. Attach the supplied mounting brackets to the side of the switch.
2. Insert the screws provided in the rack-mount kit through each bracket and into the bracket mounting holes in the switch.
3. Tighten the screws with a #1 Phillips screwdriver to secure each bracket.
4. Align the mounting holes in the brackets with the holes in the rack, and insert two pan-head screws with nylon washers through each bracket and into the rack.

5. Tighten the screws with a #2 Phillips screwdriver to secure the switch in the rack.

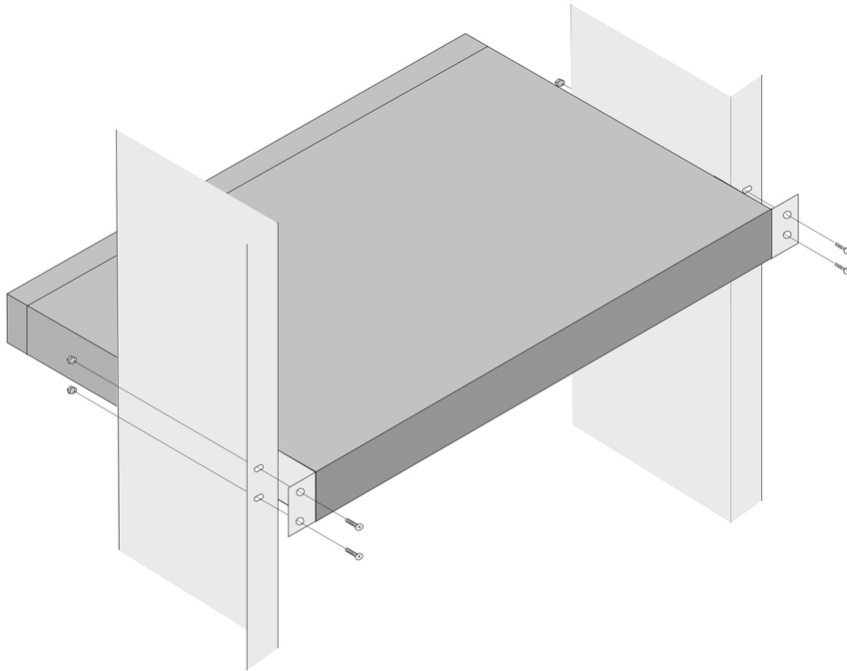


Figure 4-1

Step 3: Checking the Installation

Before applying power perform the following:

- Inspect the equipment thoroughly.
- Verify that all cables are installed correctly.
- Check cable routing to make sure cables are not damaged or creating a safety hazard.
- Ensure all equipment is mounted properly and securely.

Step 4: Connecting Devices to the Switch

The following procedure describes how to connect PCs to the switch's RJ-45 ports. The NETGEAR Smart Switch contains Auto Uplink™ technology, which allows the attaching of devices using either straight-through or crossover cables.

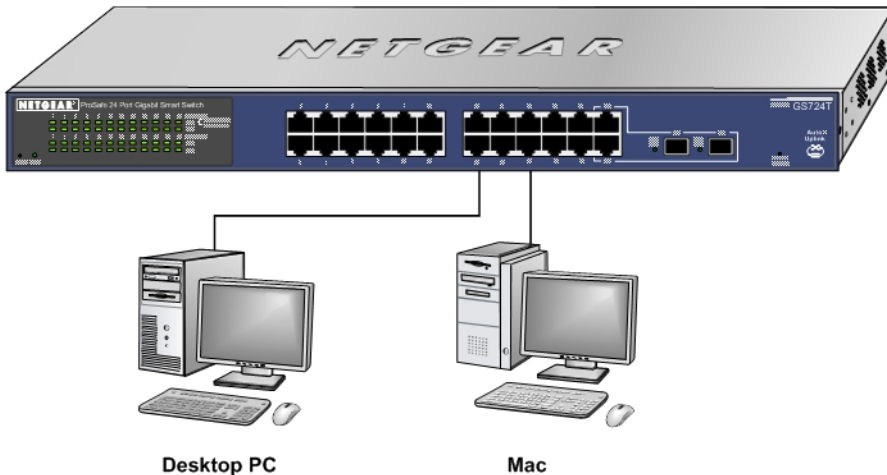


Figure 4-2

Connect each PC to an RJ-45 network port on the Switch front panel (Figure 4-2). Use Category 5 (Cat5) Unshielded Twisted-Pair (UTP) cable terminated with an RJ-45 connector to make these connections.



Note: Ethernet specifications limit the cable length between the switch and the attached device to 100 m (328 ft.).

Step 5: Installing an SFP GBIC Module

The following procedure describes how to install an SFP Gigabit Ethernet module in the switch's Gigabit module bay. Standard SFP GBIC modules are sold separately from the Smart Switch. If an SFP GBIC module is not being installed at this time, skip this procedure.

To install an SFP GBIC module:

Insert the SFP module into the SFP module bay. Press firmly to ensure the module seats into the connector.

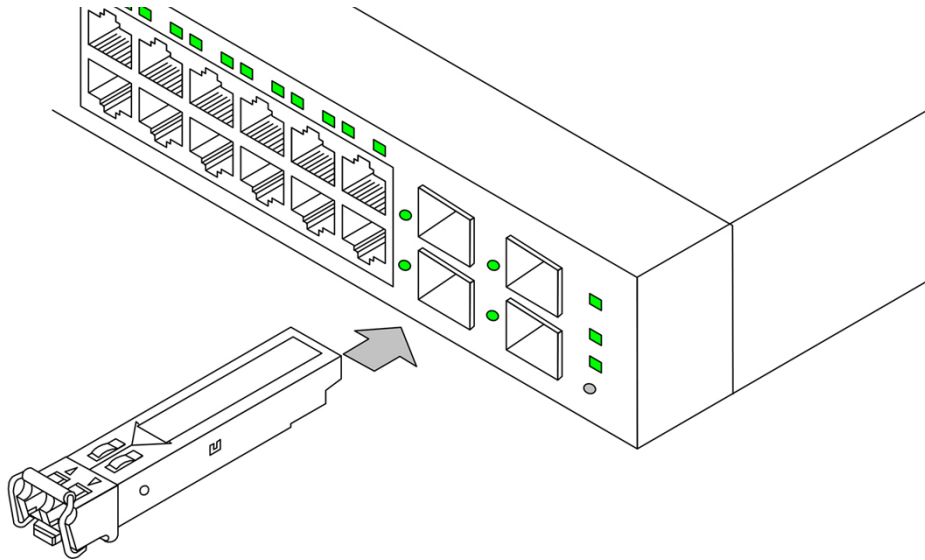


Figure 4-3

Step 6: Applying AC Power

NETGEAR Smart Switch does not have an ON/OFF switch. The method of applying or removing AC power is by connecting or disconnecting the power cord. Before connecting the power cord, select an AC outlet that is not controlled by a wall switch, which can turn off power to the switch. After selecting an appropriate outlet, use the following procedure to apply AC power.

1. Connect the female end of the supplied AC power adapter cable to the power receptacle on the back of the switch.
2. Connect the 3-pronged end of the AC power adapter cable to a grounded 3-pronged AC outlet.

When applying power, the Power LED on the switch's front panel is Green.

If the Power LED does not go on, check that the power cable is plugged in correctly and that the power source is good. If this does not resolve the problem, refer to [Appendix A](#).

Step 7: Managing the Switch using a Web Browser or the PC Utility

The NETGEAR Smart Switch contains software for viewing, changing, and monitoring the way it works. This management software is not required for the switch to work. The ports can be used without using the management software. However, the management software enables the setup of VLAN and Trunking features, and also improves the efficiency of the switch, which results in the improvement of its overall performance as well as the performance of the network.

After powering up the switch for the first time, the Smart Switch can be configured using a Web browser or a utility program called SmartWizard Discovery. For more information about managing the switch, see the *GS716T/GS724T Series Software Administration Manual* on the Smart Switch *Resource CD*.



Note: When the device powers up, there is a default IP address already configured on the device. The default IP address is 192.168.0.239 and subnet mask 255.255.255.0.

Appendix A

Troubleshooting

This chapter provides information about troubleshooting the NETGEAR Smart Switch. Topics include the following:

- [Troubleshooting Chart](#)
- [Additional Troubleshooting Suggestions](#)

Troubleshooting Chart

The following table lists symptoms, causes, and solutions of possible problems.

Table A-1. Troubleshooting Chart

Symptom	Cause	Solution
Power LED is off.	No power is received.	Check the power cord connections for the switch at the switch and the connected device. Ensure all cables used are correct and comply with Ethernet specifications.
Link LED is off or intermittent.	Port connection is not working.	Check the crimp on the connectors and make sure that the plug is properly inserted and locked into the port at both the switch and the connecting device. Ensure all cables used are correct and comply with Ethernet specifications. Check for a defective adapter card, cable, or port by testing them in an alternate environment where all products are functioning.
File transfer is slow or performance degradation is a problem.	Half-duplex or full-duplex setting on the switch and the connected device are not the same.	Make sure the attached device is set to auto-negotiate.

Table A-1. Troubleshooting Chart

Symptom	Cause	Solution
A segment or device is not recognized as part of the network.	One or more devices are not properly connected, or cabling does not meet Ethernet guidelines.	Verify that the cabling is correct. Ensure all connectors are securely positioned in the required ports. Equipment may have been accidentally disconnected.
ACT LED is flashing continuously on all connected ports and the network is disabled.	A network loop (redundant path) has been created.	Break the loop by ensuring that there is only one path from any networked device to any other networked device.

Additional Troubleshooting Suggestions

If the suggestions in Troubleshooting Chart do not resolve the problem, refer to the troubleshooting suggestions in this section.

Network Adapter Cards

Ensure the network adapter cards installed in the PCs are in working condition and the software driver has been installed.

Configuration

If problems occur after altering the network configuration, restore the original connections and determine the problem by implementing the new changes, one step at a time. Ensure that cable distances, repeater limits, and other physical aspects of the installation do not exceed the Ethernet limitations.

Switch Integrity

If required, verify the integrity of the switch by resetting the switch. To reset the switch, remove the AC power from the switch and then reapply AC power. If the problem continues, contact NETGEAR technical support. In North America, call 1-888-NETGEAR. If you are outside of North America, please refer to the support information card included with your product.

Auto-Negotiation

The RJ-45 ports negotiate the correct duplex mode and speed if the device at the other end of the link supports auto negotiation. If the device does not support auto negotiation, the switch only determines the speed correctly and the duplex mode defaults to half-duplex.

The gigabit port on the Gigabit module negotiates speed, duplex mode, and flow control, provided that the attached device supports auto-negotiation.

Appendix B

Technical Specifications

Network Protocol and Standards Compatibility	
	IEEE 802.3i 10BASE-T
	IEEE 802.3u 100BASE-TX,FX
	IEEE 802.3ab 1000BASE-T
	IEEE 802.3z 1000BASE-X
	IEEE 802.3x flow control
Management	
	Windows 2000 + XP, Vista; Microsoft Explorer 6.0 or higher
	DSCP
	IEEE 802.1Q VLAN
	IEEE 802.3ad Link Aggregation
	IEEE 802.1D Spanning Tree Protocol
	IEEE 802.1W Rapid Spanning Tree Protocol
	IEEE 802.3ab LLDP
	SNMP v1, v2c, and v3
	HTTP and HTTPS
	IGMP Snooping v1/v2
	IEEE 802.1p Class of Service (CoS)
	SNTP (Simple Network Time Protocol) 2 servers. Disabled by default.
Interface	
	16/24 RJ-45 connectors for 10BASE-T, 100BASE-TX and 1000BASE-T (Auto Uplink™ on all ports).
	2 Small Form-factor Pluggable (SFP) slots for SFP module.
LEDs	
	Per port (Gigabit): Link/Activity, Speed
	Per device: Power

Performance Specifications	
	Forwarding modes: Store-and-forward
	Bandwidth: 32 Gbps (for GS716T); 48 Gbps (for GS724T)
	Address database size: 8K media access control (MAC) addresses per system
	Mean Time Between Failure (MTBF): 307,681 hours for GS716T; 282,516 hours for GS724T
Power Supply	
	Power Consumption: 16.5W for GS716T, 21.5W for GS724T
	100-240VAC/50-60 Hz universal input
Physical Specifications	
	Dimensions (H x W x D): 1.7 x 17.3 x 10.2 / 43 x 440 x 260 (in/mm)
	Weight: GS716T: 5.99/2.72 (lbs/kg), GS724T: 6.32/2.87 (lbs/kg)
Environmental Specifications	
	Operating temperature: 0°C to 50°C (32 to 122°F)
	Storage temperature: -20°C to 70°C (28 to 158°F)
	Operating humidity: 10%-90% maximum relative humidity, non-condensing
	Storage humidity: 5%-95% maximum relative humidity, non-condensing
	Operating altitude: 3,000 m (10,000 ft.) maximum
	Storage altitude: 3,000 m (10,000 ft.) maximum
Electromagnetic Emissions	
	CE mark, commercial
	FCC Part 15 Class A
	VCCI Class A
	C-Tick
	KCC
Electromagnetic Immunity	
	EN 55022 (CISPR 22), Class A
Safety	
	CE mark, commercial
	UL listed (UL 1950)/cUL IEC950/EN60950
	CB and CCC

Modules	
	AGM731F 1000BASE-SX SFP GBIC for multimode fiber
	AGM732F 1000BASE-LX SFP GBIC for single mode fiber
	AGM733 1000BASE-LZ GBIC for long haul single mode fiber

Index

Numerics

1000BASE-LX *1-2*
1000BASE-SX *1-2*
1000BASE-T *1-2*
1000BASE-X *1-2*
100-240VAC/50-60 *2-6*
100BASE-TX *1-2*
10BASE-T *1-2*
1U *1-3*
8-pin *2-8*

A

AC Power *2-6, 2-7*
AGM731F *2-9*
AGM732F *2-9*
AGM733 *2-9*
Applying AC Power *4-17*
Attaching Switch to a Rack *4-15*
Auto Sensing *1-2*
Auto Uplink *2-8, 2-9*
Auto-negotiating *1-2*
Auto-sensing *2-8*

B

Back-pressure *1-3*
Brackets *4-14*

C

Category 5 Unshielded Twisted-Pair *1-2*
Checking the Installation *4-15*

Class of Service *1-1*
Combo Port *2-9*
Combo Ports *1-2*
Connecting Devices to the Switch *4-16*
Copper *1-1*
Crossover *2-8*

D

Default IP Address *4-18*
Default Reset Button *2-5, 2-6*
Device Hardware Interfaces *2-8*
Duplex Mode *2-8*

E

Example of Desktop Switching *3-11*

F

Factory Default Button *2-9*
Factory Defaults *2-5*
Fiber Connectivity *1-1*
Flat Surface *4-14*
Full-duplex *1-2*

G

GBIC *1-2, 2-9*
Gigabit Ports *1-1*

H

High-speed Servers *1-1*
Hz *2-6, 2-7*

I

IEEE 802.3ab *1-2*
IEEE 802.3i *1-2*
IEEE 802.3u *1-2*
IEEE 802.3x *1-2, 1-3*
IEEE 802.3z *1-2*
IEEE Standards *1-2*
IEEE-compliant *1-2*
Installation Guide *1-4*
Installing an SFP GBIC Module *4-16*
Installing the Switch *4-14*

L

LED Designations *2-7*
LINK/ACT LED *2-7*
Low Latency *1-2*

M

MAC *1-3*
Media Access Control *1-3*
Mounting Holes *4-14*

N

Nylon Washers *4-14*

O

ON/OFF switch *4-17*
Operating Conditions *4-14*
Operating Environment *4-13*
Operating humidity *4-14*
Overview *1-1*

P

Package Contents *1-3*
Pause Frame Flow Control *1-3*
Phillips Screwdriver *4-14*

Port LEDs *2-7*
Power cord *1-4*
Preparing the Site *4-13*

R

Rack *4-14*
Rack-mount Kit *1-4, 4-14*
Reset Button *2-5, 2-6*
RJ-45 *1-2*
RJ-45 Ports *2-8*
Rubber footpads *1-4, 4-14*

S

SFP GBIC Module *2-9*
SFP LINK/ACT LED *2-8*
SFP Module Bay *4-17*
Site Requirements *4-13*
Small Form-factor Pluggable (SFP) *1-2*
Smart Switch Resource CD *1-4*
Smart Control Center *1-2*
Straight-through *2-8*
Support Information Card *1-4*
System LEDs *2-8*

T

Temperature *4-14*
Traffic Control *1-1*
Troubleshooting Chart *A-19*

U

User Intervention *2-9*
User's Manual *1-4*
UTP *4-16*

V

Ventilation *4-14*

VLAN 1-1

W

Warranty 1-4

Web-based Graphical User Interface 1-1

Free Manuals Download Website

<http://myh66.com>

<http://usermanuals.us>

<http://www.somanuals.com>

<http://www.4manuals.cc>

<http://www.manual-lib.com>

<http://www.404manual.com>

<http://www.luxmanual.com>

<http://aubethermostatmanual.com>

Golf course search by state

<http://golfingnear.com>

Email search by domain

<http://emailbydomain.com>

Auto manuals search

<http://auto.somanuals.com>

TV manuals search

<http://tv.somanuals.com>