

Installation

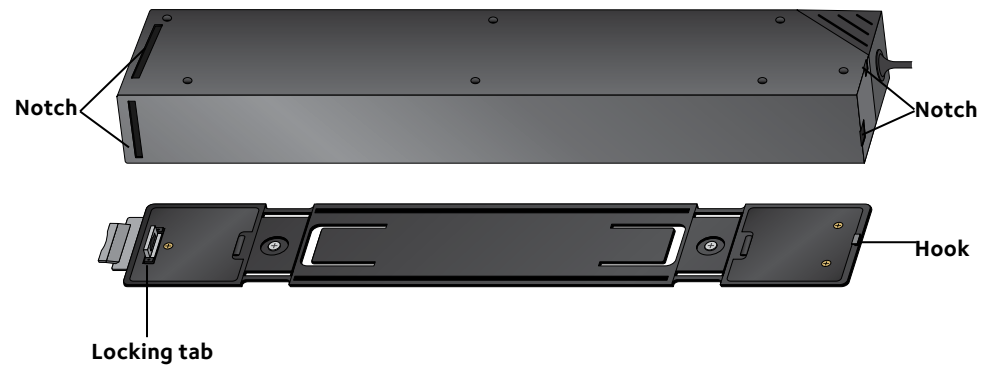
ProSAFE 8-Port and 16-Port Gigabit Click Switch

GSS108E

GSS116E



Hardware Overview

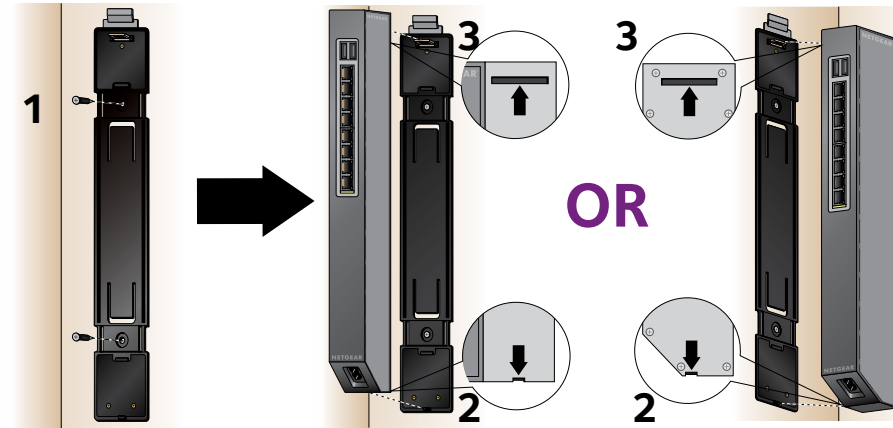


NETGEAR

Mount the Switch

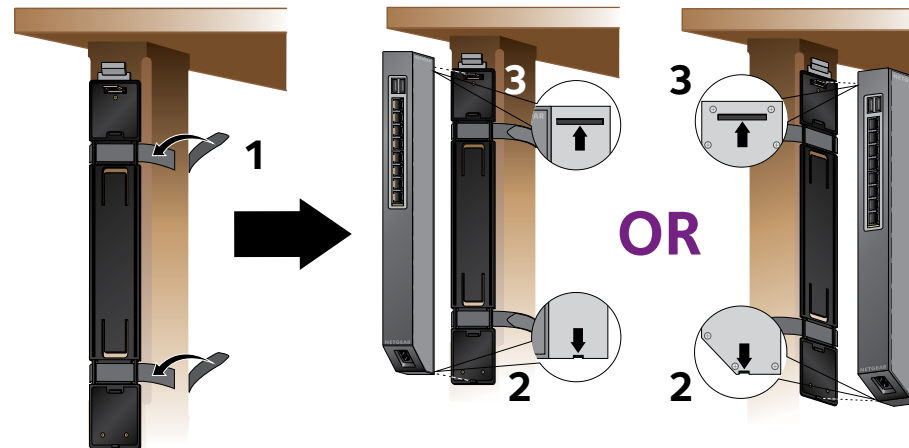
Wall mount

Note: Peel the plastic cover off of the adhesive squares on the rear of the backplate to help hold the backplate in place when mounting the switch to a wall.

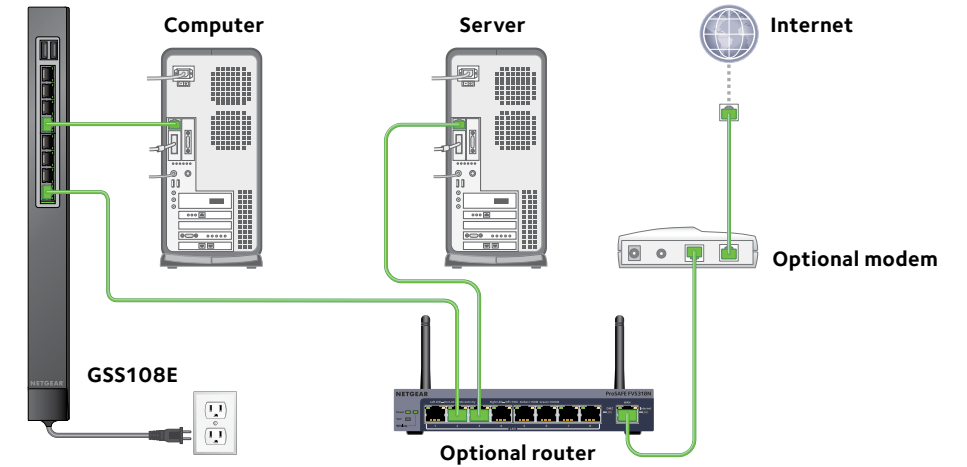


Note: You must screw the backplate into a wall stud when wall mounting the switch.

Table leg mount



Cable Devices and Connect to Power



Check the Status



Port LEDs		Power LED
	1000 Mbps link (left LED)	On
	10/100 Mbps link (right LED)	Off
	1000 Mbps activity (left LED blinking)	
	10/100 Mbps activity (right LED blinking)	
	No link (off)	

Set Up the Switch Configuration Utility

ProSAFE Click switches are plug and play and offer the same features as ProSAFE Plus switches. You can install a configuration utility to select additional options to manage and customize the switch for your network. This utility is on the resource CD that was shipped with the switch.

Note: The configuration utility is installed on your computer and is supported only on Windows.

➤ To install the configuration utility:

1. Insert the resource CD into a computer that is connected to the switch.
2. Click the **Install ProSAFE Plus Utility** link and follow the prompts to install the program.

The switch configuration utility is installed in the program directory of your computer and a **ProSAFE Plus Utility** icon is placed on your desktop.

➤ To configure the switch:

1. Double-click the **ProSAFE Plus Utility** icon.
The configuration home screen displays a list of Plus switches that it discovers on the local network.
2. Select the switch that you want to configure.
You are asked to enter the password for the switch.
3. Enter the switch's password in the **password** field.
The switch's default password is password.
4. Use the utility to configure the switch.

For a description of Plus features, see the *ProSAFE Plus Switch Configuration Utility User Guide*. You can access the user guide through links on the Help tab of the utility or on the resource CD.

Note: You can also access and configure the switch directly through its web-based user interface by entering the switch's IP address in the address bar of a browser. If a DHCP server is not installed in your network, the default IP address is 192.168.0.239.

Specifications

Specification	GSS108E	GSS116E
Network interface	RJ-45 connector for 10BASE-T, 100BASE-TX, or 1000BASE-T	RJ-45 connector for 10BASE-T, 100BASE-TX, or 1000BASE-T
Network cable	Category 5e (Cat 5e) or better Ethernet cable	Category 5e (Cat 5e) or better Ethernet cable
Ethernet ports	8	16
USB ports (provides power only)	2	-
USB power	10W maximum per port 15W maximum total	-
Power	100–240 VAC 50/60Hz, 1.0A maximum	100–240 VAC 50/60Hz, 0.5A maximum
Power consumption	20.14W maximum	8.36W maximum
Weight	0.43 kg (0.94 lb)	1.3 kg (2.64 lb)
Dimensions (W x D x H)	305 mm x 65 mm x 36 mm 12 in. x 2.54 in. x 1.39 in.	407 mm x 70 mm x 36 mm 16.02 in. x 2.7 in. x 1.39 in.
Operating temperature	0–40 °C (32–104 °F)	0–40 °C (32–104 °F)
Operating humidity	0%–90% relative humidity, noncondensing	0%–90% relative humidity, noncondensing
Electromagnetic compliance	CE Class B, FCC Class B, VCCI Class B, RCM Class B	CE Class B, FCC Class B, VCCI Class B, RCM Class B
Safety agency approvals	CE mark, CB	CE mark, CB

Support

Thank you for selecting NETGEAR products.

After installing your device, locate the serial number on the label of your product and use it to register your product at <https://my.netgear.com>.

You must register your product before you can use NETGEAR telephone support. NETGEAR recommends registering your product through the NETGEAR website.

For product updates and web support, visit <http://support.netgear.com>.

NETGEAR recommends that you use only the official NETGEAR support resources.

For the current EU Declaration of Conformity, visit http://support.netgear.com/app/answers/detail/a_id/11621/.

For regulatory compliance information, visit <http://www.netgear.com/about/regulatory/>.

See the regulatory compliance document before connecting the power supply.



201-18948-01

November 2014

NETGEAR, Inc.
350 East Plumeria Drive
San Jose, CA 95134, USA

Download from [Www.Somanuals.com](http://www.Somanuals.com). All Manuals Search And Download.

NETGEAR, the NETGEAR logo, and Connect with Innovation are trademarks and/or registered trademarks of NETGEAR, Inc. and/or its subsidiaries in the United States and/or other countries. Information is subject to change without notice. © NETGEAR, Inc. All rights reserved.

Free Manuals Download Website

<http://myh66.com>

<http://usermanuals.us>

<http://www.somanuals.com>

<http://www.4manuals.cc>

<http://www.manual-lib.com>

<http://www.404manual.com>

<http://www.luxmanual.com>

<http://aubethermostatmanual.com>

Golf course search by state

<http://golfingnear.com>

Email search by domain

<http://emailbydomain.com>

Auto manuals search

<http://auto.somanuals.com>

TV manuals search

<http://tv.somanuals.com>