

# NB2800 ADSL/Cable Router

Ideal for  
**PROTECTED  
SHARED  
INTERNET  
ACCESS**

With  
**4-port  
switch**



## SAFELY SHARE A HIGH-SPEED BROADBAND CONNECTION

The NB2800 ADSL/Cable Router and integrated 4-port network switch makes sharing your broadband connection simple to setup, use and maintain.

It eliminates the need to run your ISP's software to connect to the Internet as all ISP configuration settings are entered via a simple web browser page and are then stored in the NB2800.

Now you can save money and the administration nightmares when sharing a single ISP account. The NB2800 is equipped as standard with all of the necessary embedded software and features you need to quickly share an ISP account with up to 253 other computers connected to your network.

### INTEGRATED 10/100 4-PORT SWITCH

You can build or expand your Local Area Network (LAN) by connecting other LAN devices via the NB2800's built-in Ethernet switch. Featuring four 10/100 auto-sensing switch ports and one uplink port, your network can be expanded as and when you need it.

### ROUTER TO SHARE ADSL/CABLE INTERNET

You can use just one ADSL/Cable ISP account for all your Internet requirements, yet still let everyone on your network have their own email addresses.

### WORKS WITH MOST ADSL/CABLE SERVICE PROVIDERS

The NB2800 has been specially engineered to work with Australian ADSL/Cable ISPs.

### BUILT-IN DHCP SERVER

To make operation even simpler, the NetComm NB2800 also acts as a DHCP server. DHCP assigns IP addresses automatically as LAN users log on. It is popular because it can save a lot of IP configuration. If you prefer, the NB2800 supports Static IP addresses as well.

### FIREWALL PROTECTION

Broadband is much more open to abuse by hackers, but the NB2800 protects you against external intruders with NAT.

### VPN PASS-THROUGH

A Virtual Private Network (VPN) allows workers to securely access your LAN

from remote locations, such as their homes, via the Internet. The NetComm NB2800 supports a single session IPsec or PPTP pass-through.

### QUICK & EASY TO INSTALL

Installing the NetComm NB2800 couldn't be easier with a web browser set-up and simple one-page set-up screen. You can connect any system that runs the Internet protocol TCP/IP including PCs, Apple Macintosh and Linux.

### LED DIAGNOSTIC

The front panel LEDs provide an instant picture of the status of your router.

### RESET BUTTON

You can quickly and easily restore factory default settings by clicking the reset button.

### REMOTE ADMINISTRATION

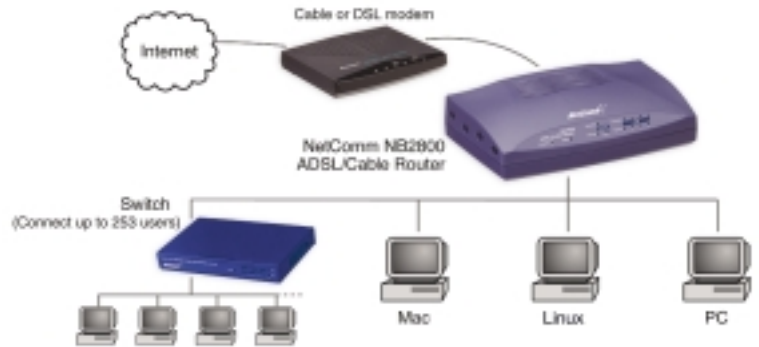
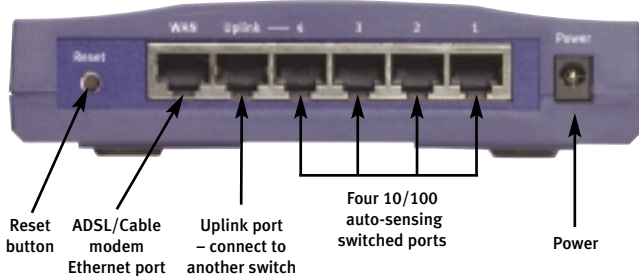
The NB2800 can be set up to allow remote administration from anywhere on the Internet. Access can be password-protected for security.

## CHECK THESE GREAT FEATURES

- ADSL/Cable Router to share a single broadband connection with up to 253 users
- Works with most ADSL/Cable Service Providers
- 4-port Ethernet 10/100 Switch with uplink to install or expand a network
- Quick and simple to install with NetComm's Web-based setup
- Compact design that won't clutter your desk



# NB2800 ADSL/Cable Router



## TECHNICAL SPECIFICATIONS

Standards Compliance	IEEE 802.3 10BASE-T IEEE 802.3U 100BASE-TX
Interface	WAN: 1x10/100Mbps Ethernet RJ-45 LAN: 4x10/100Mbps auto-sensing switch ports within one uplink port for LAN
Protocol	TCP/IP, UDP, NAT, DHCP, PPPoE, Telstra Heart Beat PAP, CHAP
Maximum Users	Up to 253 users
IP Setting	WAN: DHCP client, Static IP LAN: DHCP auto-assignment, Static IP
Management	Web-Base UI management Password authentication for configuration Fault-tolerance TFTP upgrade firmware WAN MAC address configuration Remote configuration Reset button for device reset & factory default
Security	NAT deny external intruder Filter: IP filter, URL filter, MAC filtering
Remote Access	Special Application Virtual server/Port forwarding DDNS Multiple Exposed Host (DMZ Host)
Routing	RIP1, RIP2 compatible Static Routing VPN (PPTP, IPSec) pass-through
LED Display	Power Diagnostic WAN: Link/Activity LAN: Link/Activity, FD/collision
Power	External, DC 5V, 1A
Environmental	Operation Temperature: 0~45° Storage Temperature:-20~70° Humidity 0~90% non-condensing
Flash ROM	Firmware upgradeable via TFTP
Certification	C-Tick
Dimension	87 (L) x 150 (W) x 30 (H) mm
Mounting	Desktop or wall mount

## SOFTWARE FEATURES

Allows multiple users to access Internet at the same time by providing maximum Internet utilisation to multiple users to share a single public IP Address.

Acts as both DHCP client and DHCP server for receiving WAN IP Address from ISP and configuring IP Addresses to LAN PCs.

Web-based user interface for easy configuration and management through web browser like Netscape Communicator 4.0 or later or Internet Explorer 4.0 or later.

Compatible with all popular Internet applications and Cable and ADSL Service Providers.

NAT security protects internal users from outside intruders.

Allows administrators to block certain users from accessing the Internet, specific applications, or certain web sites.

Can allow unrestricted two-way communication between one PC on your LAN and certain Internet services like conferencing, video and gaming applications.

Enhances the routing performance with Dynamic and Static routing options.

Allows change of WAN MAC address.

Allows authorised users to manage device remotely.

## 3 YEAR WARRANTY\*

1 year warranty out of the box.  
Extra 2 years **FREE** with online registration at [www.netcomm.com.au](http://www.netcomm.com.au)

\*Conditional upon registration online.

## PACKAGE CONTENTS

- NB2800 ADSL/Cable Router
- Cat-5 RJ45 straight through Ethernet Cable
- Plug Pack 5VDC 1.0A, Quick Start and Installation Guide
- Self-adhesive rubber feet

## BASIC SYSTEM REQUIREMENTS

ADSL or Cable Modem with Ethernet connection port

PC running TCP/IP Ethernet ie: Windows®, Mac OS or Linux

PC equipped with 10/100 Ethernet Port

Web Browser

ADSL or Cable ISP service

240 Volt GPO (Power Point)

Note: Additional Cat-5 Ethernet Cables required for connection to multiple PCs.

Your Netcomm dealer:

**NetComm is Australia's dynamic data communications and networking solutions provider. For more information on this and other NetComm products, please visit [www.netcomm.com.au](http://www.netcomm.com.au)**

NetComm Limited ABN 85 002 490 486

PO Box 1200, Lane Cove NSW 2066 Australia.

**PHONE** (02) 9424 2070 • **FAX** (02) 9424 2010

**www.netcomm.com.au** • **EMAIL** [sales@netcomm.com.au](mailto:sales@netcomm.com.au)

Trademarks and registered trademarks are the property of NetComm Limited or their respective owners. Specifications are subject to change without notice. Images shown may vary slightly from the product.

## Free Manuals Download Website

<http://myh66.com>

<http://usermanuals.us>

<http://www.somanuals.com>

<http://www.4manuals.cc>

<http://www.manual-lib.com>

<http://www.404manual.com>

<http://www.luxmanual.com>

<http://aubethermostatmanual.com>

Golf course search by state

<http://golfingnear.com>

Email search by domain

<http://emailbydomain.com>

Auto manuals search

<http://auto.somanuals.com>

TV manuals search

<http://tv.somanuals.com>