



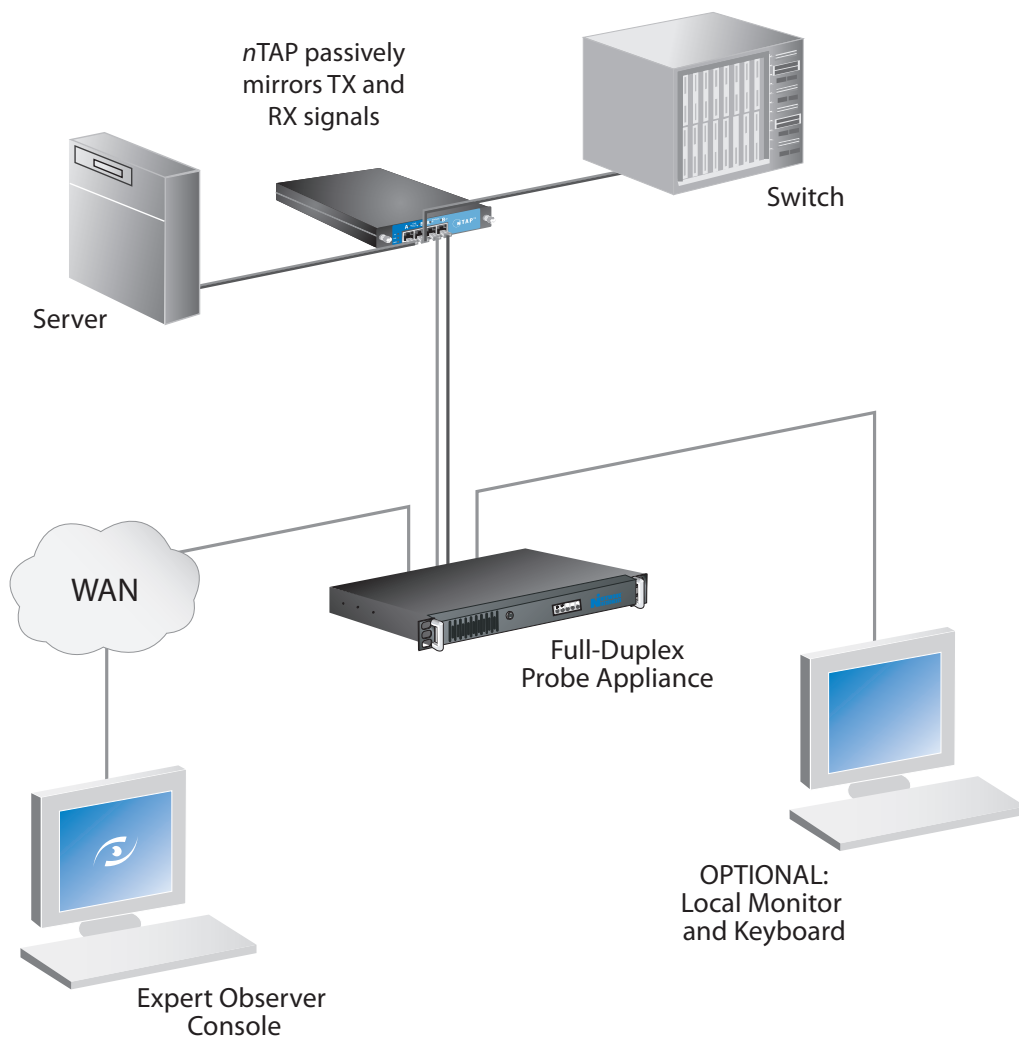
10/100 Full-Duplex Probe Appliance

Complete Visibility into Full-Duplex Links

Network Instruments® offers a variety of remote probe appliances for complete network coverage. For real-time monitoring and analysis of 10/100 full-duplex links, the Network Instruments 10/100 Probe Appliance is an ideal choice. This 1U rack mount system includes an *n*TAP to passively monitor and maintain 10/100 links at wire-speed. Obtain detailed views with statistics, captures and a real-time Expert system. The full-duplex probe appliance ensures no dropped packets and no lost information—even on saturated links.

Use the Full-Duplex Probe Appliance to:

- Eliminate the dependence on a SPAN or mirror port
- Reduce switch load
- Ensure data integrity



Administrator can view and analyze data both remotely and on-site

Proven Analysis Metrics

Real-Time Statistics such as network summary, total and individual link bandwidth utilization by DCE and DTE, top talkers, VLAN analysis, protocol distribution, and more

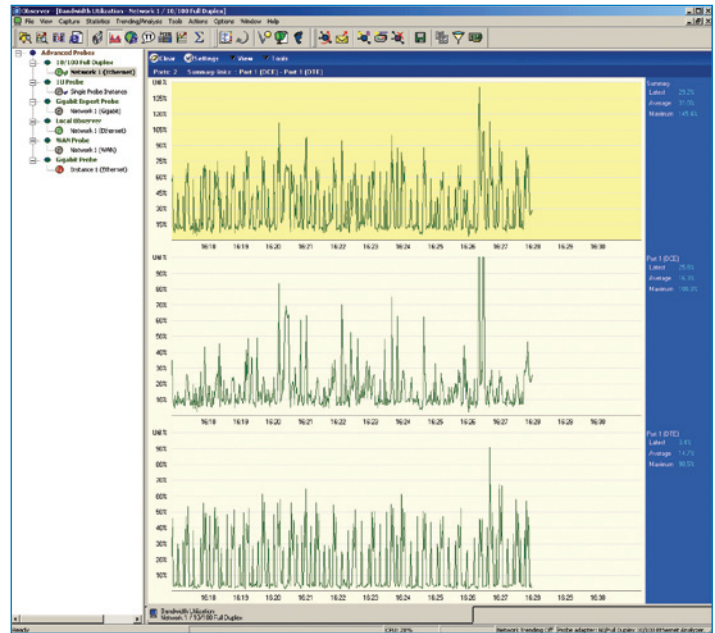
Packet Capture and Decode options such as nanosecond resolution, a 4 GB memory buffer (maximum), over 550 protocols decoded, and more

Network Trending and Reporting features such as comparison analysis reports, web reporting, customized reports, and more

Real-Time Expert Analysis and Decode processing at the individual probe level with the Advanced Expert Probe software

Full-Duplex Probe Features

- Deploy and remove the full-duplex probe without disruption of the network
- Obtain full-duplex, wire-speed capture and statistics
- Utilize the largest memory buffer (4 GB maximum) in the industry for capturing large amounts of data without packet loss
- Includes an external 100 Mb full-duplex *nTAP* and an internal dual-port Intel NIC utilizing proprietary Network Instruments firmware and drivers
- Configure as an RMON probe for full adherence to all 21 RMON groups, including HCRMON
- Use with any RMON management console or collection facility (Observer Suite, OpenView, NetScout, Micromuse, etc.)



View full-duplex bandwidth utilization by DCE/DTE

Works with Expert Observer or Observer Suite

The Full-Duplex Probe Appliance works with the award-winning Expert Observer and Observer Suite console to provide the best in packet capture, decode, real-time statistics, Expert analysis, network trending, and network reporting. Observer® features include:

- Nanosecond resolution for enterprise-level networks
- Unlimited filtering options including Boolean logic
- Over 550 protocols and countless subprotocols decoded
- Over 570 Expert Events to speed troubleshooting
- Triggers and Alarms for immediate alerts to network activities or errors
- Application Analysis statistics including response time and total/failed transactions for common applications such as SQL, MS Exchange, Oracle, VoIP, HTTP, Citrix, and more

Technical Specifications

Platform 1U rack mount

System Specs A complete system, running Windows XP, includes 10/100/1000 Ethernet Management Port, 100 percent line-rate capture, includes an external 100 Mb Full-Duplex *nTAP*, and the Advanced Expert Probe Software

For additional technical specifications, please visit our web site at:
www.networkinstruments.com

About Network Instruments

Network Instruments provides in-depth network intelligence and continuous network availability through innovative analysis solutions. Enterprise network professionals depend on Network Instruments' Observer product line for unparalleled network visibility to efficiently solve network problems and manage deployments. By combining a powerful management console with high-performance analysis appliances, Observer simplifies problem resolution and optimizes network and application performance. The company continues to lead the industry in ROI with its advanced Distributed Network Analysis (NI-DNA™) architecture, which successfully integrates comprehensive analysis functionality across heterogeneous networks through a single monitoring interface. Network Instruments is headquartered in Minneapolis with sales offices worldwide and distributors in over 50 countries. For more information about the company, products, technology, NI-DNA, becoming a partner, and NI University please visit www.networkinstruments.com.

Solution Bundles

Contact a Network Instruments representative or dealer to ask about product bundles that cover all of your network management needs.



Corporate Headquarters

Network Instruments, LLC • 10701 Red Circle Drive • Minnetonka, MN 55343 • USA
toll free (800) 526-7919 • telephone (952) 358-3800 • fax (952) 358-3801

www.networkinstruments.com

European Headquarters

Network Instruments • 7 Old Yard • Rectory Lane • Brasted, Westerham • Kent TN16 1JP • United Kingdom
telephone + 44 (0) 1959 569880 • fax + 44 (0) 1959 569881

www.networkinstruments.co.uk

Free Manuals Download Website

<http://myh66.com>

<http://usermanuals.us>

<http://www.somanuals.com>

<http://www.4manuals.cc>

<http://www.manual-lib.com>

<http://www.404manual.com>

<http://www.luxmanual.com>

<http://aubethermostatmanual.com>

Golf course search by state

<http://golfingnear.com>

Email search by domain

<http://emailbydomain.com>

Auto manuals search

<http://auto.somanuals.com>

TV manuals search

<http://tv.somanuals.com>