

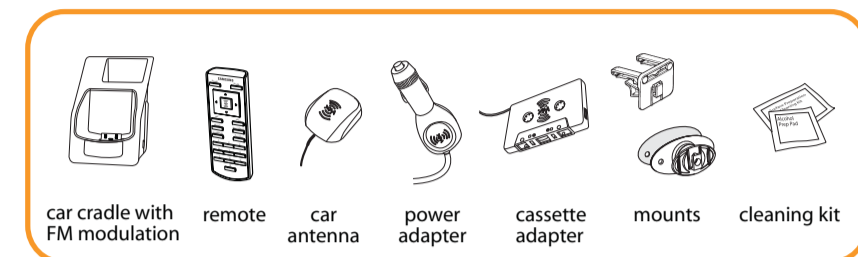
car install guide

NEXUS™ 25 & 50

XM Satellite Radio Digital Audio Player

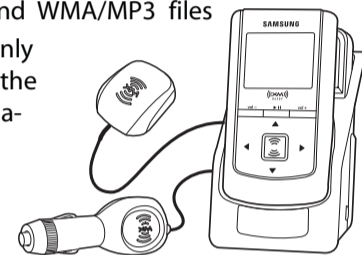
What's in the box?

NeXus™ Car Kit YA-CP200



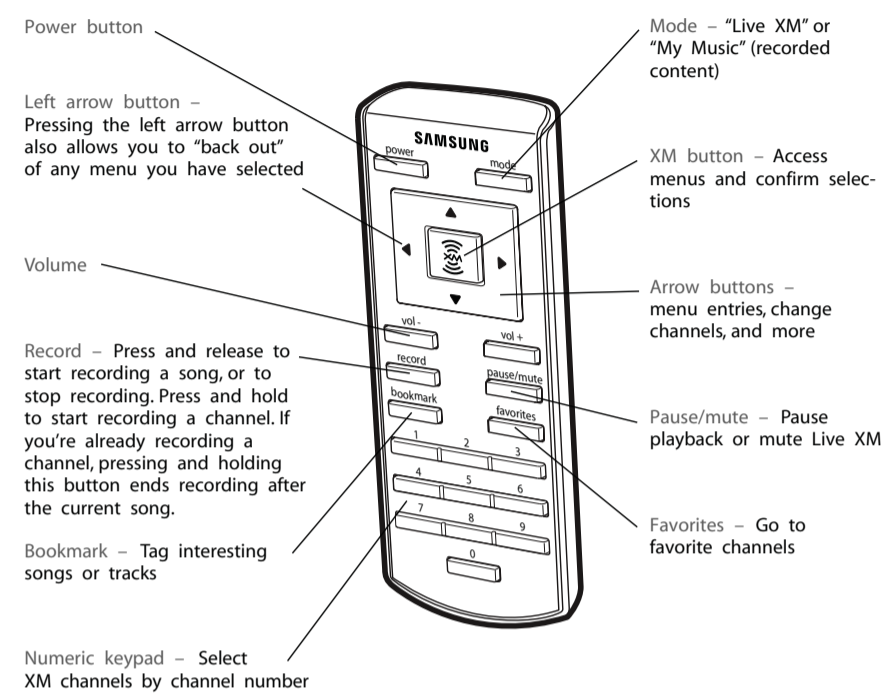
NeXus + Car Cradle + Antenna = Live XM

- Listen to live XM*, recorded XM*, and WMA/MP3 files
- To listen in your car or at home; you only have to carry your NeXus* player and the XM Mini-Tuner* between these installations.



*Hardware and required monthly subscription sold separately. Recorded music not for use in commercial establishments. Installation cost and other fees and taxes, including a one-time activation fee may apply. Subscription fee is consumer only. XM products, programming, services, and fees are subject to change at any time, without notice. Channels with frequent explicit language are indicated with an XL. Channel blocking is available for XM radio receivers by calling 1-800-XM-RADIO. Subscriptions subject to Customer Agreement available at xmradio.com. XM service only available in the 48 contiguous United States. ©2006 XM Satellite Radio Inc. All rights reserved.

Remote

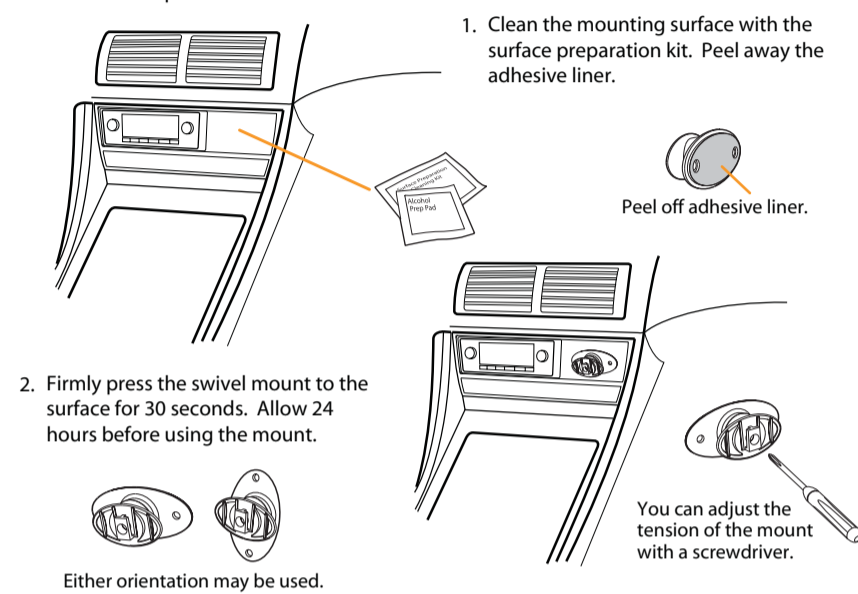


Setup: In Car

Choose the best way to mount your car cradle.

How to use the swivel mount

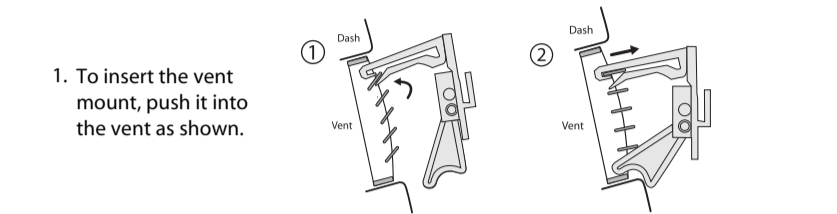
To install the swivel mount, first find a suitable location. The swivel mount's adhesive is very strong and may be difficult to remove. Do not install this mount on leather surfaces and make sure the air temperature is at least 60°F.



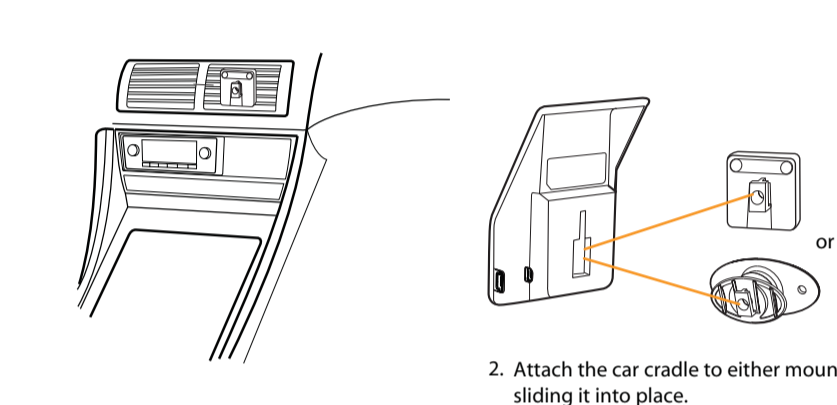
If you need to remove the mount, carefully lift the adhesive pad with your fingers or a spoon. Warming with a hair dryer for several minutes will help soften the adhesive.

How to use the vent mount

To install the vent mount, find a horizontal vent that is strong enough to hold your NeXus and its car cradle.

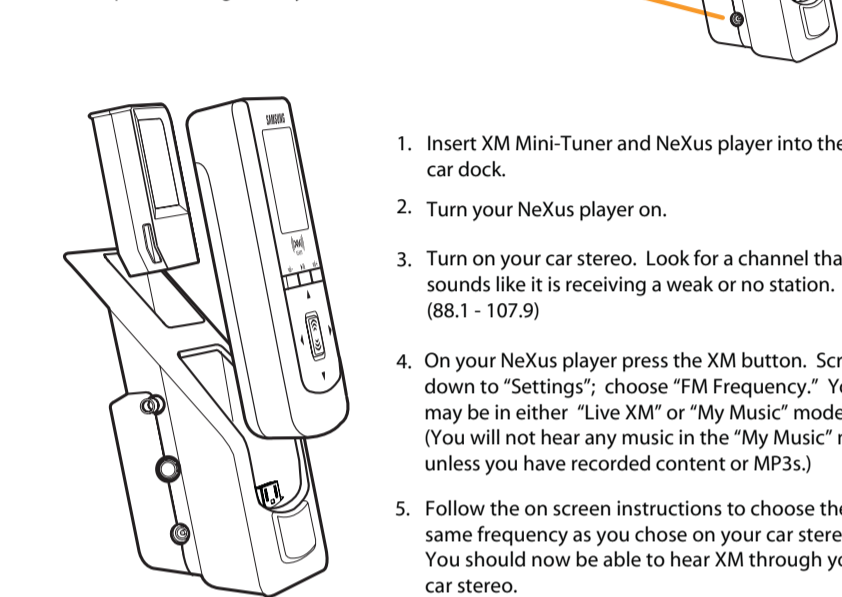


To remove the vent mount, push it into the vent and lift upwards slightly to release the mount's hooks from the vent vane.



How to receive XM through your car stereo

Once you have mounted the radio, installed the antenna, and plugged in the power adapter you are ready to plug in all of the connectors. The line out may be used for an optional cassette adapter or direct adapter if FM reception is not good in your area.



Vehicle Installation Guidelines for XM Satellite Radio

This XM Receiver offers the listener a variety of options for connecting XM Satellite Radio to your vehicle's FM radio. XM research and lab test results show that using a vehicle cassette adapter can best maximize the relationship between the best sound quality and ease of installation. If your vehicle kit does not include a cassette adapter, one should be available at your local retailer or visit www.xmradio.com, click "Shop XM Radio."

Audio Quality	Good	Better	Best
Cassette Adaptor	[Progress bar showing Good, Better, Best]		
Wired FM	[Progress bar showing Good, Better, Best]		
Wireless FM	[Progress bar showing Good, Better, Best]		

1. Cassette Adaptor

Using a cassette adaptor for audio is the most popular and best sounding solution. Please follow steps 1 through 4 below for mounting the satellite radio antenna and securing the XM receiver and cables.

2. Wired FM (Professional Installation Recommended)

A wired FM installation kit is available from your retailer for professional installation. See your retailer for details. This solution is recommended if you cannot get acceptable performance with the wireless FM modulator.

3. Wireless FM Modulator

The XM receiver is equipped with a FM modulator which can transmit the XM audio to your car's FM radio without wires.

IMPORTANT: For best wireless FM Modulator performance, you must locate the satellite radio antenna in a location that is in close proximity to the vehicle's FM antenna.

For example, with reference to Figure 1, if your FM antenna is located on a rear fender or top of the roof, mount the XM antenna near the rear window location (option 1). If your FM antenna is located on a front fender, mount the XM antenna near the windshield location (option 2). Remember, the closer the satellite radio antenna can be to the FM antenna, the better the wireless FM reception and sound quality will be.

In order to optimize the operation of the wireless FM modulator, follow the installation guidelines outlined in steps 1 through 4 below:

Step 1:

First, determine the proper location for your satellite radio antenna based on the following criteria for your specific vehicle:

- You must locate the satellite radio antenna on the top of the roof either in front of the rear window (option 1) or behind the windshield (option 2). The satellite radio antenna will perform best if magnetically attached to a steel surface with an unobstructed view of the open sky and minimum of 3 to 6 inches of metal surrounding the antenna.
- When routing the antenna cable along the windshield or rear window, tuck the antenna cable under the window seal to maintain a professional looking installation and to avoid loose wires on the exterior of the vehicle which are susceptible to damage. Follow the interior cable routing diagram depicted by dashed lines in Figure 1 where possible.

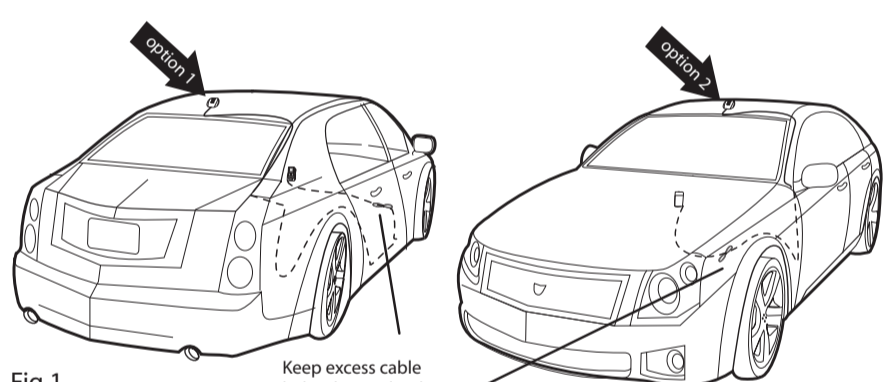


Fig 1

- For best FM Modulator performance, you must locate the satellite radio antenna in a location that is in close proximity to the vehicle's FM antenna.
- Avoid kinking, crimping, twisting or chafing the cable. Use pre-existing wire channels when possible.
- For option 1 and rear mounting locations, route the cable into the trunk as shown. Always cross the weather seal at the lowest part of the trunk to reduce water leaks. From the trunk, route the cable into the passenger compartment through available wire channels and then along the floor under the door jam trim or under the carpet to the front of the passenger compartment. Do not leave the cable loose in the passenger compartment where it is likely to be damaged.
- For option 2 and front mounting locations, route the cable along the door jam and into the vehicle as shown. Route the cable across the weather seal near the bottom of the door to reduce water leaks.

Step 2:

Be sure to locate your car cradle and receiver below the top of the dash in your vehicle to keep the product within easy reach while driving. Choosing a lower location in your installation should also make it easier to manage the cables and achieve a more desirable appearance when the installation is completed. A lower location for the receiver in the vehicle will ensure that the installation does not cause interference with other FM radios outside the vehicle.

See illustration below (Fig 2) and be sure to locate your car cradle within the shaded area.

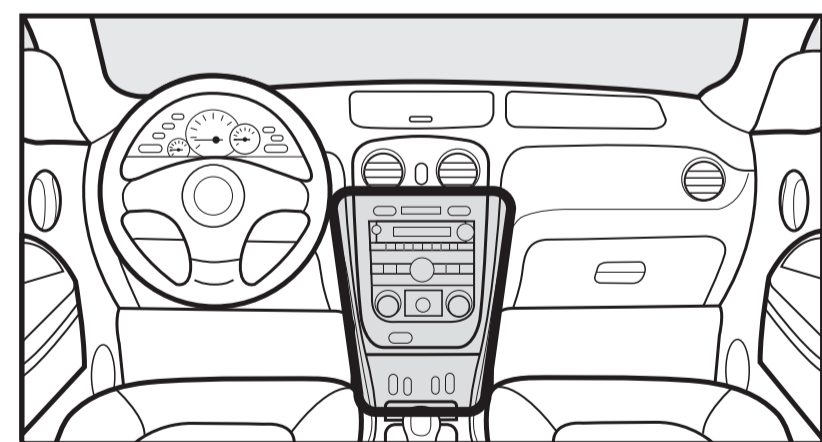


Fig 2

Step 3:

Once you have plugged the power and antenna jacks in to the car cradle, use the included cable organizer as shown in figure 3 to improve the overall appearance of the installation.

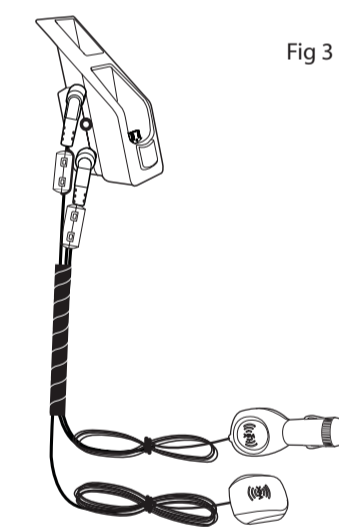


Fig 3

Step 4:

Re-use the cable twist ties that were provided with the power adaptor and car antenna cables and always be sure to gather, bundle, twist tie, and secure any excess cable remaining after determining the best location for your satellite radio installation.

For example, secure the excess cable up under your dash board, between the seat and the console, or on the floor under a seat or floor mat. This will help to prevent the excess cable from interfering with the everyday use of your vehicle, improve the appearance of the installation, and avoid any undesirable accidental damage to the cables that might result in loss of power or satellite signal.

For wireless FM modulator installations, securing and tie wrapping the excess cable is important to reduce background hissing noise. Be sure to choose a location carefully by taking notice of how doors and trunks open and close, as well as how seats move when they are adjusted so you can be certain there is ample clearance provided for the cables.

FCC INFORMATION:

Please note that the cables and antenna wire that has been supplied with your device are supplied with permanently attached ferrite beads. It is the responsibility of the user to use the cable and antenna wire with the ferrite beads.

The user is cautioned that changes or modifications not expressly approved by XM Satellite Radio, Inc. can void the user's authority to operate this device.

This device complies with Part 15 of the FCC Rules. Operation is subject to the following two conditions: (1) This device may not cause harmful interference, and (2) this device must accept any interference received, including interference that may cause undesired operation.

This equipment has been tested and found to comply with the limits for a Class B digital device, pursuant to Part 15 of the FCC Rules. These limits are designed to provide reasonable protection against harmful interference in a residential installation.

This equipment generates, uses and can radiate radio frequency energy and, if not installed and used in accordance with the instructions, may cause harmful interference to radio or television reception, which can be determined by turning the equipment off and on, the user is encouraged to try to correct the interference by one or more of the following measures:

- Reorient or relocate the receiving antenna.
- Increase the separation between the equipment and receiver.
- Connect the equipment into an outlet on a circuit different from that to which the receiver is connected.
- Consult the dealer or an experienced radio/TV technician for help.

Warranty

Samsung warrants MP3 players to be free of defects in material and workmanship for a period of twelve (12) months from the original date of purchase by the consumer. If during the period of warranty this product proves defective under normal use and service, you should return the product to the retailer from whom it was originally purchased, or to any Samsung Authorized Dealer or Authorized Service Center, if outside the time limit for returns imposed by the retailer. The liability of Samsung and its appointed maintenance company is limited to the cost of repair and/or replacement of the unit under warranty.

For further information relating to the Authorized Service Centers, contact 1-800-SAMSUNG (1-800-726-7864).

Warranty Conditions

- The warranty is only valid upon presentation of the proof of purchase consisting of original invoice or sales slip confirmation, indicating the date of purchase, retailer's name, model, serial number and product number. Samsung reserves the right to refuse warranty service if this information has been removed or changed after the original purchase of the product from the retailer.
- Samsung's sole obligations are to the repair of the defective part, or at its discretion, replacement of the product (service exchange unit).
- Warranty repairs must be carried out by an Authorized Samsung Dealer/Service Center. No reimbursement will be made for repairs carried out by non-Samsung Centers, and warranty coverage will not be valid for any repairs or damage caused by such repairs.
- Repair or replacement under the terms of this warranty does not give right to extension to or a new starting of the period of warranty. Repair or direct replacement under the terms of this warranty may be fulfilled with functionally equivalent service exchange units.

Free Manuals Download Website

<http://myh66.com>

<http://usermanuals.us>

<http://www.somanuals.com>

<http://www.4manuals.cc>

<http://www.manual-lib.com>

<http://www.404manual.com>

<http://www.luxmanual.com>

<http://aubethermostatmanual.com>

Golf course search by state

<http://golfingnear.com>

Email search by domain

<http://emailbydomain.com>

Auto manuals search

<http://auto.somanuals.com>

TV manuals search

<http://tv.somanuals.com>