

# IntelliControl<sup>®</sup>ICS

I N T E G R A T E D   C O N T R O L   S O L U T I O N S

## USER GUIDE

---

# DMS4

---

## DIGITAL MUSIC SERVER

E N G I N E E R E D   B Y



NILES<sup>®</sup>

## COPYRIGHT NOTICE

Copyright 2007 Niles Audio Corporation. All rights reserved.



**XIVA LINK**

Cover art illustration from the XIVA™ on-line service ©2004 Muze Inc.

Music recognition technology and related data are provided by Gracenote and the Gracenote CDDB® Music Recognition Service<sup>SM</sup>. Gracenote is the industry standard in music recognition technology and related content delivery. For more information go to [www.gracenote.com](http://www.gracenote.com)



CD and music-related data from Gracenote, Inc., copyright © 2000-2006 Gracenote. Gracenote Software, copyright © 2000-2006 Gracenote. This product and service may practice one or more of the following U.S. Patents: #5,987,525; #6,061,680; #6,154,773; #6,161,132; #6,230,192; #6,230,207; #6,240,459; #6,330,593, and other patents issued or pending. Some services supplied under license from Open Globe, Inc. for U.S. Patent: #6,304,523.

Gracenote and CDDB are registered trademarks of Gracenote. The Gracenote logo and logotype, and the "Powered by Gracenote" logo are trademarks of Gracenote.

MPEG Layer-3 audio coding technology licensed from Fraunhofer IIS and THOMSON multimedia.

## INSTALLER NOTES

If you are installing an IntelliControl® ICS DMS4 Digital Music Server for the first time you may wish to take notice of the following items to assist with the configuration process:

- Your DMS4 Digital Music Server is configured by default for use with an NTSC television. If you are using a PAL television the DMS4 Digital Music Server's TV user interface may not display correctly. For information about configuring this setting, see page 31
- The Niles DMS4 Digital Music Server is equipped with the ability to update its internal software via the Internet. It is strongly recommended that you perform an online update once the unit is installed. For more information, see page 35

## AUTOMATIC SHUTDOWN

This product contains sensors that continually monitor its operating temperature. Should the temperature exceed the product's maximum safe operating temperature then an automatic shutdown will be initiated. Notification of the shutdown will be displayed on the TV user interface with a countdown before it is commenced.

Automatic shutdown is necessary to help prevent component damage through overheating. To prevent automatic shutdown, ensure that the ambient temperature surrounding the product does not exceed 40°C/104°F. This can be achieved by ensuring the product's ventilation grills are not obstructed and, where the product is installed in an enclosure, there is plenty of ventilation for air flow. The current operating temperature can be viewed in the **System Information** menu in **Settings**.

# CONTENTS

<b>Precautions</b>	<b>4</b>	Selecting Album Artwork	27
<b>Important Safety Instructions</b>	<b>5</b>	Deleting Albums and Tracks	28
<b>Important Safety Notices</b>	<b>6</b>	<b>The Front Panel Interface</b>	<b>29</b>
<b>Features &amp; Benefits</b>	<b>7</b>	Displaying Playback Information	29
<b>Controls and Connections</b>	<b>8</b>	Browsing Albums in the Audio Library	29
Front View	8	Recording or Playing a CD	29
Rear View	9	Configuring Set Up Options	30
Remote Control	10	Online Updates	30
Switching On and Off	11	<b>IntelliControl® Wall-Mounted &amp; iREMOTE® Interfaces 31</b>	
Configuring Your Remote to Control Other Devices	11	User Interface Descriptions	31
Remote Control Use in a Multi-room System	12	DMS4 & IntelliControl® ICS User Interface Functionality	32
Volume Control	12	Playing Music From The DMS4 Library Using the CONTACT Keypad	32
<b>Connecting Your DMS4 Digital Music Server</b>	<b>13</b>	Playing From The DMS4 Library Using The iREMOTE® or DISPLAY User Interface	33
Basic Connections	13	<b>System Settings</b>	<b>34</b>
Integrating The DMS4 Digital Music Server Into An IntelliControl® System	14	Connection Settings	34
<b>Recording and Playing Music</b>	<b>15</b>	Edit Ethernet Settings	34
The Main Menu	15	Assigned Ethernet Settings	34
Recording Music	16	TV Settings	35
Recording From a CD	16	User Interface Settings	35
Listening to Music While Recording From a CD	16	The Screensaver	35
Playing a CD	16	System Information	35
Playing Music	17	Software Update Settings	35
The Audio Library	17	Network Back Up Settings	35
Playing Music from the Audio Library	18	CD Record Settings	36
Displaying the Audio Library	18	Media Transfer Settings	36
Browsing the Audio Library by Track	18	Output Configuration	36
Browsing the Audio Library by Album	18	XiVALink Settings	36
Browsing the Audio Library by Covers	18	<b>Using Your DMS4 Digital Music Server with a Home Computer</b>	<b>37</b>
Browsing the Audio Library by Artist	19	The Remote User Interface	37
Browsing the Audio Library by Genre	19	Accessing the Remote User Interface	37
Browsing the Audio Library by Year	20	Supported Software	37
Browsing the Audio Library by Era	20	Navigating the Remote User Interface	37
Browsing Playlists in the Audio Library	20	Media Transfer	38
Browsing Presets in the Audio Library	20	Accessing Media Transfer	38
Playing the Entire Library	21	Enabling Media Transfer	38
Selecting Items Directly Using Your DMS4 Digital Music Server Remote Control	21	Importing Files to Your DMS4 Digital Music Server	39
<b>The Search Function</b>	<b>22</b>	Exporting Files From Your DMS4 Digital Music Server	39
<b>The Mark Function</b>	<b>22</b>	Transferring Music to your Portable Player using iTunes®	39
<b>The Now Playing Screen</b>	<b>23</b>	Transferring Music to your Portable Player using Windows Media Player	39
Switching Audio Outputs	24	Network Back-Up and Restore	40
Controlling Playback	24	Network Back-Up	40
Now Playing Screen Options	24	Network Restore	40
The Play Queue	25	<b>Appendix A Remote Control Codes</b>	<b>41</b>
<b>Organizing Your Music Collection</b>	<b>25</b>	HDD Audio Remote Control Codes	41
Playlists	25	TV Remote Control Codes	41
Creating a New Playlist	25	AMP Remote Control Codes	45
Adding Music to a Playlist	25	<b>Terms &amp; Conditions</b>	<b>46</b>
Editing Playlists	26	<b>Specifications</b>	<b>49</b>
<b>Presets</b>	<b>26</b>	<b>Warranty</b>	<b>49</b>
Storing a Preset	26		
<b>Editing the Audio Library</b>	<b>27</b>		
Editing Album Information	27		
Editing Track Information	27		
Editing Genre, Year and Era Names	27		

# PRECAUTIONS

## GENERAL PRECAUTIONS

When installing the equipment ensure that:

- it is not moved while in operation
- the ventilation holes are not covered
- air is allowed to circulate freely around the equipment
- it is placed on a vibration free surface
- it will not be exposed to excessive heat, cold, moisture or dust
- it will not be exposed to direct sunlight
- it will not be exposed to electrostatic discharges
- it is not installed vertically or tilted
- never place heavy objects on the equipment

If a foreign object or water does enter the equipment, contact your nearest dealer or service center.

It is advisable when leaving the house, or during a thunderstorm, to disconnect the equipment from the power supply.

### WARNINGS

TO REDUCE THE RISK OF FIRE OR ELECTRIC SHOCK, DO NOT EXPOSE THIS APPLIANCE TO RAIN OR MOISTURE.

Do not remove the cover from the equipment. There are no user serviceable parts inside, and opening the case will invalidate your warranty.

Do not move while the product is running. Movement can result in irrecoverable data loss and damage to the hard disk. Allow at least 30 seconds after shutdown before moving to allow the hard disk to spin down.

Do not pull out the plug by pulling on the power cord; grasp the plug.

Do not insert anything into the equipment through the ventilation holes.

Do not cover the ventilation holes with any items such as tablecloths, newspapers, curtains, etc. To avoid overheating do not position the DMS4 Digital Music Server near or above heat sources, and ensure that the ventilation holes are not blocked.

Do not place naked flame sources, such as lighted candles, on the equipment.

Do not handle the power lead with wet hands.

At least 2.5cm/1" clearance is required on all sides to allow air to circulate in and around the product.

Do not splash or spill water on the unit. Do not place objects filled with liquid (such as vases) on the unit.

## CD HANDLING PRECAUTIONS

- Handle discs carefully so as not to damage or scratch the front side. Always keep the disc surface clean
- To protect the disc avoid placing it in the following locations:
  - In direct sunlight or near a source of heat
  - In a place which is damp or dirty
  - In a place which could be exposed to rain, such as near a window
- Do not use a disc with a special shape
- For best performance when recording from a CD ensure the temperature never exceeds 35°C/95°F where the DMS4 Digital Music Server is located

## DTS ENCODED DISCS PRECAUTION

**CAUTION** - when playing DTS encoded discs excessive noise will be heard on the analog output jacks of the DMS4 Digital Music

Server. To avoid possible damage to the system you should ensure that the correct connections are made to your amplification system for replaying this type of disc.

## POWER CORD PRECAUTIONS

Your DMS4 Digital Music Server complies with the household power and safety requirements in your area.

### IMPORTANT IF USED IN THE UK:

This apparatus is fitted with an approved moulded 13 amp plug. To change a fuse in this type of plug proceed as follows:

1. Remove fuse cover and fuse
2. Fix new fuse which should be a BS1362 5A, A.S.T.A or BSI approved type
3. Refit the fuse cover

If the fitted plug is not suitable for your socket outlets, it should be cut off and an appropriate plug fitted in its place.

If the power plug contains a fuse, this should have a value of 5A. If a plug without a fuse is used, the fuse at the distribution board should not be greater than 5A.

**Note:** The severed plug must be destroyed to avoid a possible shock hazard should it be inserted into a 13A socket elsewhere.

### How to connect a plug

The wires in the power lead are colored in accordance with the following code:

1. The BLUE wire must be connected to the terminal which is marked with the letter "N" or colored BLACK
2. The BROWN wire must be connected to the terminal which is marked with the letter "L" or colored RED
3. The GREEN/YELLOW-GREEN wire must be connected to the terminal which is marked by the letter "E" or by the safety earth symbol  $\perp$  or colored green or green-and-yellow

Before replacing the plug cover, make certain that the cord grip is clamped over the sheath of the lead - not simply over the three wires.

## BATTERY PRECAUTION

This product contains a lithium battery. Danger of explosion if battery is incorrectly replaced. Replace only with the same or equivalent type recommended by Niles. When disposing of used batteries, please follow the manufacturer's recommendations and comply with governmental regulations or environmental regulations or environmental public instructions that apply in your country or area.

## STANDBY BUTTON

When this button is pressed once, the power turns On and information will appear on the display. When pressed again, press the **Off** action key or the  $\text{⏻}$  key on the remote control to switch to Off mode. When the unit is in Off mode the "Standby" indicator is lit; the apparatus is not disconnected from the AC power supply in this mode.

## COPYRIGHT NOTICE

This equipment must not be used for unauthorized duplication of CDs or any other works protected by copyright. No license to infringe copyright is granted by the sale of this equipment.

Recording and playback of some material may require permission. For further information refer to the following:

- Copyright Act 1956
- Dramatic and Musical Performers Act 1958
- Performers Protection Acts 1963, and 1972
- Any subsequent statutory enactments and orders

# IMPORTANT SAFETY INSTRUCTIONS

**READ INSTRUCTIONS** - All the safety and operating instructions should be read before the product is operated.

**KEEP INSTRUCTIONS** - The safety and operating instructions should be kept for future reference.

**HEED WARNINGS** - All warnings on the product and in the operating instructions should be followed.

**FOLLOW INSTRUCTIONS** - All operating and use instructions should be followed.

**CLEANING** - Unplug this product from the wall outlet before cleaning. The product should be cleaned only with a soft dry cloth. Never clean with furniture wax, benzine, insecticides or other volatile liquids since they may corrode the cabinet.

**ATTACHMENTS** - Do not use attachments not recommended by the product manufacturer as they may cause hazards.

**WATER AND MOISTURE** - Do not use this product near water - for example near a bathtub, wash bowl, kitchen sink, or laundry tub; in a wet basement; or near a swimming pool; and the like.

**ACCESSORIES** - Do not place this product on an unstable cart, stand, tripod, bracket, or table. The product may fall, causing serious injury to a child or adult, and serious damage to the product. Use only with a cart, stand, tripod, bracket or table recommended by the manufacturer, or sold with the product. Any mounting of the product should follow the manufacturer's instructions and should use a mounting accessory recommended by the manufacturer.

**CART** - A product and cart combination should be moved with care. Quick stops, excessive force and uneven surfaces may cause the product and cart combination to overturn:



**VENTILATION** - Slots and openings in the cabinet are provided for ventilation and to ensure reliable operation of the product and to protect it from overheating. Do not block any ventilation openings. The openings should never be blocked by placing the product on a bed, sofa, rug or other similar surface. This product should not be placed in a built-in installation such as a bookcase or rack unless proper ventilation is provided. Install in accordance with the manufacturer's instructions.

**POWER SOURCES** - This product should be operated only from the type of power source indicated on the marketing label. If you are not sure of the type of power supply to your home, consult your product dealer or local power company.

**LOCATION** - The appliance should be installed in a stable location.

**NONUSE PERIODS** - The power cord of the appliance should be unplugged from the outlet when left unused for a long period of time.

**GROUNDING OR POLARIZATION** - If this product is equipped with a polarized alternating current line plug (a plug having one blade wider than the other), it will fit into the outlet only one way. This is a safety feature. If you are unable to insert the plug fully into the outlet, try reversing the plug. If the plug does not fit into the outlet, contact your electrician to replace your obsolete outlet. Do not defeat the safety purpose of the polarized plug. If this product is equipped with a three-wire grounding type plug, a plug having a third (grounding) pin, it will only work in a grounding type power outlet. This is a safety feature. If you are unable to insert the plug into the outlet, contact your electrician to replace your obsolete outlet. Do not defeat the safety purpose of the grounding type plug.

**POWER CORD PROTECTION** - Power-supply cords should be protected from being walked on or pinched particularly at plugs, convenience receptacles, and the point where they exit from the product.

**OUTDOOR ANTENNA GROUNDING** - If an outside antenna or cable system is connected to the product be sure the antenna or cable system is grounded so as to provide some protection against voltage surges and built-up static charges. Article 810 of the National Electric Code. ANSI/NFPA70 provides information with regard to proper grounding of the mast and supporting structure, grounding of the lead-in wire to an antenna discharge unit, connection to grounding electrodes, and requirements for the grounding electrode. See Figure A.

**LIGHTNING** - For added protection for this product during a lightning storm, or when it is left unattended and unused for long periods of time, unplug it from the wall outlet and disconnect the antenna or cable system. This will prevent damage to the product due to lightning and powerline surges.

**POWER LINES** - An outside antenna system should not be located in the vicinity of overhead power lines or other electric light or power circuits, or where it can fall into such power lines or circuits. When installing an outside antenna system, extreme care should be taken to keep from touching such power lines or circuits as contact with them might be fatal.

**OVERLOADING** - Do not overload wall outlets, extension cords or integral convenience receptacles as this can result in a risk of fire or electric shock.

**OBJECT AND LIQUID ENTRY** - Never push objects of any kind into this product through openings as they may touch dangerous voltage points or short-out parts that could result in a fire or electric shock. Never spill liquid of any kind on the product.

**SERVICING** - Do not attempt to service this product yourself as opening or removing covers may expose you to dangerous voltage or other hazards. Refer all servicing to qualified service personnel.

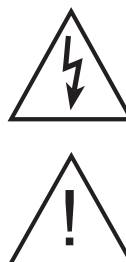
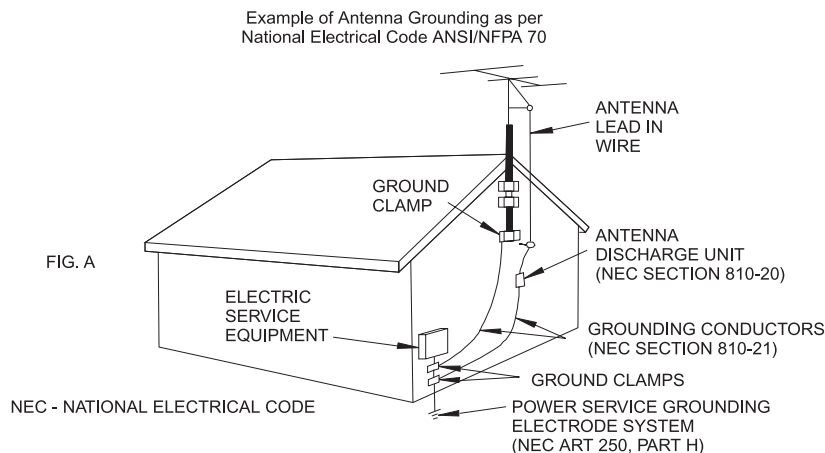
**DAMAGE REQUIRING SERVICE** - Refer all servicing to qualified service personnel. Servicing is required when the apparatus has been damaged in any way, such as power-supply cord or plug is damaged, liquid has been spilled or objects have fallen into the apparatus, the apparatus has been exposed to rain or moisture, does not operate normally, or has been dropped.

**REPLACEMENT PARTS** - When replacement parts are required, be sure the service technician has used replacement parts specified by the manufacturer or have the same characteristics as the original part. Unauthorized substitutions may result in fire, electric shock, or other hazards.

**SAFETY CHECK** - Upon completion of any service or repairs to this product, ask the service technician to perform safety checks to determine that the product is in proper operating condition.

**WALL OR CEILING MOUNTING** - The product should not be mounted to a wall or ceiling.

**HEAT** - Do not install near any heat source such as radiators, heat registers, stoves, or other apparatus (including amplifiers) that produce heat.

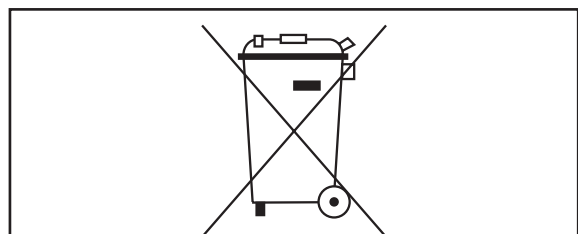
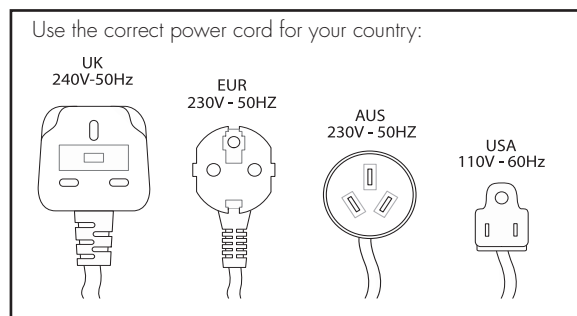


The lightning flash with arrowhead symbol, within an equilateral triangle, is intended to alert the user to the presence of uninsulated "dangerous voltage" within the product's enclosure that may be of sufficient magnitude to constitute a risk of electric shock to persons.

The exclamation point within an equilateral triangle is intended to alert the user to the presence of important operating and maintenance (servicing) instructions in the literature accompanying the appliance.

# IMPORTANT SAFETY NOTICES

The serial number for this equipment is located on the rear panel. Please write this serial number down and keep it in a secure place. This is for your security.



Waste electrical products must not be disposed of with household waste. This equipment should be taken to your local recycling centre for safe treatment.

Les produits électriques usagés ne doivent en aucun cas être jetés avec les ordures ménagères. Cet appareil doit être apporté à la déchetterie pour subir un traitement adapté.

Elektrische Geräte dürfen nicht mit dem Hausmüll entsorgt werden. Wenden Sie sich für eine umweltgerechte Entsorgung dieser Geräte an Ihren örtlichen Entsorgungsbetrieb.

I dispositivi elettrici non devono essere gettati insieme ai rifiuti domestici. Tali apparecchiature devono essere consegnate al centro di riciclaggio locale per il corretto smaltimento.

Los dispositivos electrónicos no deben desecharse junto con los residuos domésticos. Este tipo de aparatos debe llevarse al centro de reciclaje más cercano para su adecuado tratamiento.

Safety information varies depending on the geographic region in which this unit is sold and operated. Please refer to the relevant section below for your country of sale and operation.

## CANADIAN MODEL

**Note:** This Class B digital apparatus complies with Canadian ICES-003.

Cet appareil numérique de la Classe B est conforme à la norme NMB-003 du Canada.

**CAUTION:** TO PREVENT ELECTRIC SHOCK, MATCH WIDE BLADE OF PLUG TO WIDE SLOT, FULLY INSERT.

**ATTENTION:** POUR ÉVITER LES CHOCS ÉLECTRIQUES, INTRODUIRE LA LAME LA PLUS LARGE DE LA FICHE DANS LA BORNE CORRESPONDANTE DE LA PRISE ET POUSSER JUSQU'AU FOND.

## U.S. MODEL

**CAUTION:** This product satisfies FCC regulations when shielded cables and connectors are used to connect the unit to other equipment. To prevent electromagnetic interference with electric appliances such as radios and televisions, use shielded cables and connectors for connections.

**Note:** This equipment has been tested and found to comply with the limits for a Class B digital device, pursuant to Subpart J, Part 15 of the FCC rules. These limits are designed to provide reasonable protection against harmful interference in a residential installation. This equipment generates, uses, and can radiate radio frequency energy and, if not installed and used in accordance with the instructions, may cause harmful interference to radio communications. However, there is no guarantee that interference will not occur in a particular installation. If this equipment does cause harmful interference to radio or television reception, which can be determined by turning the equipment off and on, the user is encouraged to try to correct the interference by one or more of the following measures:

- Reorient or relocate the receiving antenna
- Increase the separation between the equipment and receiver
- Connect the equipment into an outlet on a circuit different from that to which the receiver is connected
- Consult the dealer or an experienced radio/TV technician for help

Changes or modifications may cause this unit to fail to comply with Part 15 of the FCC Rules and may void the user's authority to operate the equipment.

## CAUTION

- Use of controls or adjustments or performance of procedures other than those specified herein may result in hazardous radiation exposure
- The use of optical instruments with this product will increase eye hazard

## Information to User

Alteration or modifications carried out without appropriate authorization may invalidate the user's right to operate the equipment.

## EUROPEAN MODEL

**Note:** This product has been designed and type-tested to comply with the limits set out in EN55013, EN55020, EN60950, EN55022: 1998 CLASS B4, EN55024: 1998, FCC RULES PART 15 SUBPART B CLASS B. AS/NZS 3548:1995 CLASS B



## CAUTION:

**CLASS 1  
LASER PRODUCT**

**LASER SAFETY:** This unit employs a LASER. Only a qualified person should remove the cover or attempt to service the device, due to possible eye injury.

"CAUTION-USE OF CONTROLS OR ADJUSTMENTS OR PERFORMANCE OF PROCEDURE OTHER THAN THOSE SPECIFIED HEREIN MAY RESULT IN HAZARDOUS RADIATION EXPOSURE."

# FEATURES AND BENEFITS

## INTRODUCTION

Congratulations on purchasing your IntelliControl® ICS DMS4 Digital Music Server from Niles. The DMS4 Digital Music Server is a revolutionary way of filling your home with music.

Your DMS4 Digital Music Server stores and catalogs your music collection, allowing you to select any album or track at the press of a button. You can browse through your albums and tracks using convenient on-screen menus displayed on your television, showing full album, track, and artist names downloaded from the Gracenote Music Recognition Service as well as album cover art illustration from the XiVA on-line service. Your DMS4 Digital Music Server also lets you organize your music collection and create selections for different occasions to suit your mood.

## FEATURES AND BENEFITS

### Incredible capacity

Your DMS4 Digital Music Server is a hard disk based audio system which can store thousands of hours of music, all with the convenience of instant access.

### Convenient TV screen interface

Play music, record CDs, or organize your library using convenient on-screen menus which show the full album, artist, and track names, allowing you to select the one you want with a few simple selections.

### Internet access for track listings

Your DMS4 Digital Music Server records the CDs from your music collection at high speed. It then automatically connects to the Gracenote Music Recognition Service via the Ethernet connection. This database provides album and track details for a wide range of CDs. This information can be downloaded and stored with each CD you record, allowing you to select any item in your music collection by album name, artist name, track name, or genre, giving you total flexibility in the way you access and control your music collection.

### 2-way metadata feedback

Your DMS4 Digital Music Server has a 2-way metadata interface with the IntelliControl® ICS system. This means that CD titles, artist names, track names, etc., are automatically and instantly displayed on a compatible IntelliControl® ICS display as soon as a new disc is recorded.

### Create your own playlists

Your DMS4 Digital Music Server allows you to compile personal playlists and then automatically play tracks from the playlist you have selected. Playlists let you customize your DMS4 Digital Music Server for each member of the family, or for matching the music to the occasion or mood. Playlist creation is performed via the front panel, handheld remote buttons and TV interface.

## Instant access, irrespective of your music collection

Whether you select a track by title, album, artist, or genre, your DMS4 Digital Music Server locates it instantly and plays it at the press of a key. All this is achieved with an extremely simple and intuitive user interface, operated using a few keys on the front panel or remote control.

## UNPACKING THE BOX (CONTENTS)

- IntelliControl® ICS DMS4 Digital Music Server
- 1 x Stereo RCA Cable
- 1 x Composite Video Cable
- 1 x SCART to Component Video Cable
- 3 x Power Cords (US, EU & UK)
- Remote Control Handset
- 2 x AAA (R03P) Dry Cell Batteries
- Quick Start Guide
- User Guide

# CONTROLS AND CONNECTIONS

## FRONT VIEW

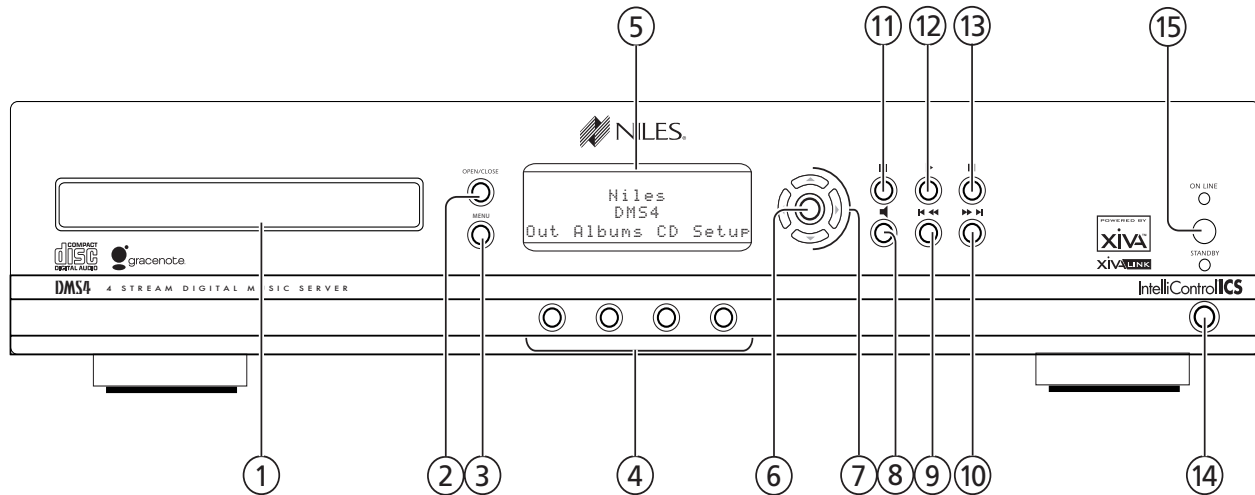


Fig. 1-1 DMS4 Front Panel

This section provides information about the controls and connections available on your IntelliControl® ICS DMS4 Digital Music Server.

### ① DISC TRAY

Discs should be inserted with the label side up.

### ② OPEN/CLOSE button

Pressing the OPEN/CLOSE button opens the disc tray. Place a compact disc on the tray with the label side facing up. Press the button again to close the tray.

### ③ MENU button

Press the MENU button to display the Main Menu screen.

### ④ ACTION buttons

Action buttons allow you to perform specific operations dependent on the current menu screen. For more information on using the action buttons, refer to **The Front Panel Interface** section.

### ⑤ DISPLAY

The display shows information about the music available on the unit, the status of the DMS4 Digital Music Server (for instance if the unit is currently playing), and the current configuration of the unit.

### ⑥ SELECT button

Selects the option currently visible on the display.

### ⑦ NAVIGATION buttons

The navigation buttons allow you to move up, down, left or right through the menus shown on the display.

### ⑧ OUTPUT button

This button is used to select the current audio output.

### ⑨ <<</>>> button

When the button is pressed briefly during playback, play restarts at the beginning of the current track. A second brief press moves to the beginning of the previous track. When the button is held for a longer period of time the music will rewind at high speed.

### ⑩ >>> / >>> button

When the button is pressed briefly during playback, play restarts at the beginning of the next track. When the button is held for a longer period of time the music will fast forward at high speed.

### ⑪ || PAUSE button

Press the pause button to interrupt playback temporarily.

### ⑫ ▶ PLAY button

Press the play button to resume playback if the music has been stopped or paused.

### ⑬ ■ STOP button

Press the stop button to halt playback on the current audio output.

### ⑭ STANDBY

Press the standby button to turn your DMS4 Digital Music Server off, press again to switch your DMS4 Digital Music Server back on.

### ⑮ REMOTE SENSOR

This window receives signals transmitted from the remote control unit.



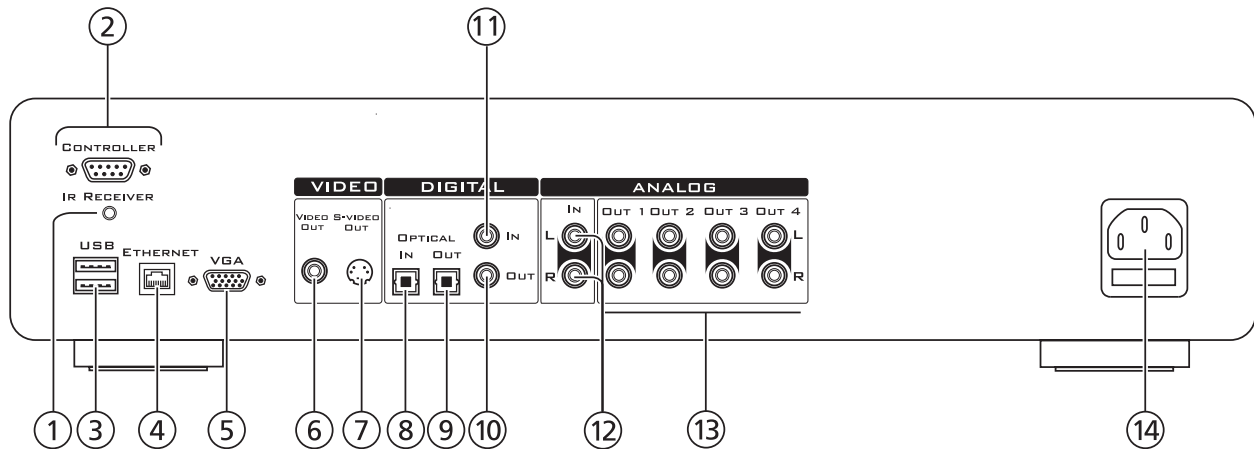
**REAR VIEW**

Fig. 1-2 DMS4 Rear Panel

**① IR RECEIVER**

The IR Receiver connection allows remote control information to be carried from other devices directly into the DMS4 Digital Music Server.

**② CONTROLLER**

The Controller port provides serial communication with supported devices.

**③ USB**

Allows the DMS4 Digital Music Server to communicate with supported USB devices.

**④ ETHERNET**

The Ethernet port is used to connect the DMS4 Digital Music Server to a high speed Internet connection.

**⑤ VGA**

The VGA connector may be used to connect a VGA monitor.

**⑥ VIDEO OUT**

Connect the composite Video Out of the DMS4 Digital Music Server to the composite input of a suitable PAL/NTSC TV (depending on the supplied configuration) to display the TV User Interface. You may also need to switch the TV to the relevant AUX input to display the picture.

**⑦ S-VIDEO OUT**

Connect the S-VIDEO output of the DMS4 Digital Music Server to the S-VIDEO input of a suitable PAL/NTSC TV (depending on the supplied configuration) to display the TV User Interface. You may also need to switch the TV to the relevant AUX input to display the picture.

**⑧ DIGITAL OPTICAL IN**

Reserved for future use.

**⑨ DIGITAL OPTICAL OUT**

The digital optical output can be used to transmit high quality audio to a device with a digital optical input (D/A converter, A/V amplifier etc.) using an optical fiber cable without first being converted to analog. Audio sent via this output is the same as that sent via the Analog Audio Out 1 connector.

**⑩ DIGITAL OUT - COAXIAL**

By connecting this jack to a digital audio component (D/A converter, A/V amplifier etc.), digital signals from the DMS4 Digital Music Server can be transmitted directly from the system without first being converted to analog. Audio sent via this output is the same as that sent via the Analog Audio Out 1 connector.

**⑪ DIGITAL IN - COAXIAL**

Reserved for future use.

**⑫ ANALOG IN**

Analog sources (such as cassette or vinyl LP) may be recorded onto the hard disk of the DMS4 Digital Music Server using this connection. (Not yet supported in the current software release).

**⑬ ANALOG OUT 1,2,3,4**

The DMS4 Digital Music Server is a multi-room device allowing you to listen to different music in up to four different zones all at the same time (depending on the configuration purchased). Each analog output should be connected to the input jacks of a pre-amplifier.

**⑭ POWER**

Connect the supplied power cord to this connector to provide power to the unit.

## REMOTE CONTROL

The following diagram explains the function of the keys on your DMS4 Digital Music Server remote control:

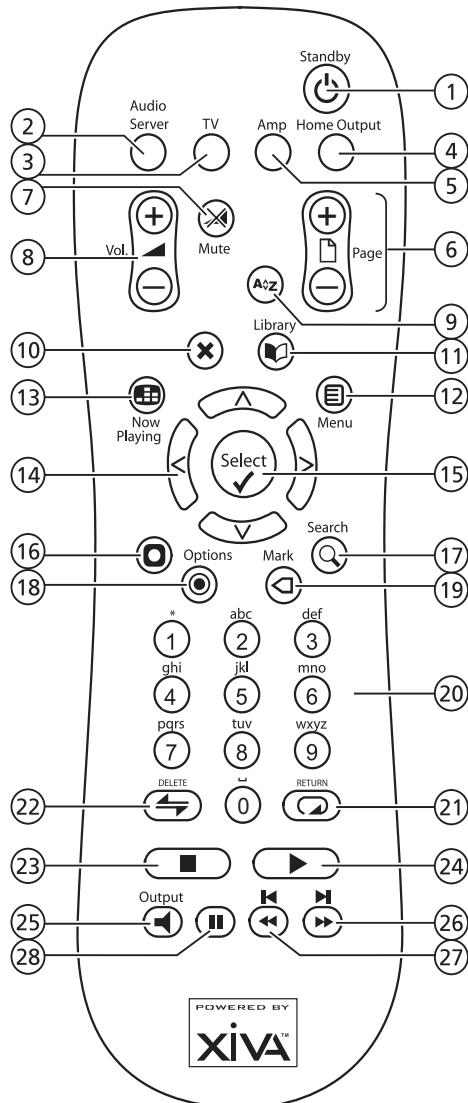


Fig. 1-3 DMS4 Remote Control

- ① **STANDBY key**  
Puts the television user interface of the DMS4 Digital Music Server in to and out of Standby mode.
- ② **Audio Server key**  
Press this key to select the DMS4 Digital Music Server as the device to be controlled. For more information about using this key, see the section titled **Configuring Your Remote to Control Other Devices** on page 11.
- ③ **TV key**  
Press this key to select the TV as the device to be controlled. For more information about using this key, see the section titled **Configuring Your Remote to Control Other Devices** on page 11.
- ④ **HOME OUTPUT key**  
Press this key to select the **Home Output**.

- ⑤ **AMP key**  
Press this key to select the Amp as the device to be controlled. For more information about using this key, see the section titled **Configuring Your Remote to Control Other Devices** on page 11.
- ⑥ **PAGE SCROLL keys**  
These keys are used to scroll through menus by page. When editing text, these keys are used to change the character set.
- ⑦ **MUTE key**  
Provided that the current output volume setting is set to **Variable**, this button will mute the current output. If the TV or Amp device is selected, this key mutes the volume. See the section called **Volume Control** on page 12 for more information.
- ⑧ **VOLUME keys**  
Provided that the current output volume setting is set to **Variable**, this button will increase/decrease the volume of the current output. If the TV or Amp device is selected, these keys control the volume of the TV/Amp. See the section called **Volume Control** on page 12 for more information.
- ⑨ **A-Z ALPHABETIC SCROLL key**  
Press this key to access the **Initial Letter** screen. This screen is only available if the list currently displayed is in alphabetical order.
- ⑩ **CANCEL key**  
The **Cancel** key is used to cancel an operation which you no longer wish to continue.
- ⑪ **LIBRARY key**  
The **Library** key is used to display the **Audio Library**.
- ⑫ **MENU key**  
Press this key to display the **Main Menu**.
- ⑬ **NOW PLAYING key**  
The **Now Playing** key is used to view the **Now Playing** screen for the currently selected audio output.
- ⑭ **NAVIGATION <, >, ^, v keys**  
The navigation keys are used to move up, down, left or right through the menu pages.
- ⑮ **SELECT key**  
**Select** is used to activate the currently highlighted option. When browsing the **Library** this key will start playback of the selected item.
- ⑯ **ACTION key**  
The **Action** key performs different tasks depending on the screen you are currently viewing. For example, on the **Albums** screen, this key is used to add the highlighted selection to a playlist.
- ⑰ **SEARCH key**  
The **Search** key can be used to search for music in your **Audio Library**. If pressing this key has no effect, then the search function cannot be used on the current screen.

**18**    **⊙ OPTIONS key**

Press this key on any library screen to view a list of available options. If pressing this key has no effect, then there are no options available on the current screen.

**19**    **◀ MARK key**

This key is used in the **Audio Library** to select multiple items and then perform an action on them collectively. For more information about using the mark function refer to page 22.

**20**    **NUMERIC (0 to 9) keys**

The numeric keys can be used as follows:

- In the library you may jump to an item in the list that begins with one of the letters specified at the top of each key
- In text entry mode these keys can be used as an alphanumeric key pad (similar to a mobile phone)

**21**    **↻ REPEAT (RETURN) key**

The **Repeat** key has the following functions:

- During playback this key toggles the repeat play setting on the DMS4 Digital Music Server
- In text entry mode this key can be used to perform a carriage return

**22**    **⇄ SHUFFLE (DELETE) key**

The **Shuffle** key has the following functions:

- During playback this key toggles the random play setting on the DMS4 Digital Music Server
- In text entry mode this key can be used to delete characters

**23**    **■ STOP key**

During playback the **Stop** key halts playback on the currently selected output of the DMS4 Digital Music Server.

**24**    **▶ PLAY key**

The **Play** key can be used to resume playback on the currently selected output of the DMS4 Digital Music Server.

**25**    **◀ OUTPUT key**

Press this key to change the currently selected audio output.

**26**    **▶▶▶ key**

When this key is pressed briefly during playback, play restarts at the beginning of the next track. When the key is held for a longer period of time the music will fast forward at high speed.

**27**    **◀◀◀ key**

When this key is pressed briefly during playback, play restarts at the beginning of the current track. A second brief press moves to the beginning of the previous track. When the key is held for a longer period of time the music will rewind at high speed.

**28**    **|| PAUSE key**

Press the pause key to interrupt playback temporarily.

**SWITCHING ON AND OFF**

Your DMS4 Digital Music Server is designed to remain switched on continuously. However, if you are not planning to use your DMS4 Digital Music Server for an extended period of time, you may want to switch it off.

- To switch off, press the **STANDBY** button on the front panel of your DMS4 Digital Music Server. Next, press the action button labelled **Yes** below the LCD display. After a brief period, the unit will switch off and the Standby LED will glow red
- To switch back on, press the **STANDBY** button on the front panel of your DMS4 Digital Music Server again. After a brief period, the unit will switch on, the Standby LED will glow green and the TV will display the **Audio Library** screen

If you are not using your DMS4 Digital Music Server for a brief period, you may want to switch it to Standby mode.

- Press the **Standby** key on your DMS4 Digital Music Server remote control. The TV screen will display the **Standby** screen
- Press the **Standby** key again to leave Standby mode and return to normal operation

**CONFIGURING YOUR REMOTE TO CONTROL OTHER DEVICES**

The **TV** and **Amp** keys on the remote control may be individually configured to control a range of televisions and amplifiers from well known manufacturers.

**To configure the remote to control your television**

- Press the **TV** and **✓Select** keys simultaneously; hold them down for 1 second

The TV key will remain lit for 20 seconds; the configuration process must be completed during this time.

- Enter the 3 digit numeric code matching the manufacturer of your television from the list in **Appendix A**
- Press the **TV** button again

The **TV** key will blink twice to indicate that the configuration has been accepted. If the **TV** key does not blink begin the process again, taking care to enter the number exactly as printed in the list. If the television is switched on during the configuration process, entering the correct code will cause the television to go into standby.

To configure the remote to control your amplifier, follow the above procedure, pressing the **AMP** key in place of the **TV** key, and using the appropriate numeric code for your amplifier.

## REMOTE CONTROL USE IN A MULTI-ROOM SYSTEM

Your IntelliControl® ICS DMS4 Digital Music Server remote control can be configured so that every button press indicates to the system which output is to be controlled. This means that whenever infrared is received by the DMS4 Digital Music Server the TV display will automatically switch to controlling the appropriate output.

### To configure the remote controller with a default output

- Press the **Audio Server** and **✓Select** keys simultaneously on the remote control; hold them down for 1 second

The **Audio Server** key will remain lit for 20 seconds; the configuration process must be completed during this time.

- Enter the 3 digit code into the hand-held remote control corresponding to the output you would like to control (valid configurations are listed in **Appendix A**). For example, to set output 2 as your default output press:

0, 0, 2

- Press the remote's **Audio Server** button again

The **Audio Server** button will blink twice to indicate that the configuration has been accepted. If the **Audio Server** button does not blink twice begin the process again, taking care to enter the number correctly.

Pressing any navigation key on the remote should now cause the DMS4 Digital Music Server to switch to the correct output. The remote control can still be used to control a different audio output in the normal way; pressing the **Home Output** key will return it to controlling the default output.

## VOLUME CONTROL VIA THE REMOTE

In addition to controlling the volume with the IntelliControl® system, your DMS4 Digital Music Server remote control is capable of controlling the volume of the music you are listening to. This is done either by controlling the output of the DMS4 Digital Music Server itself, or by reassigning the volume control keys to control the output of your amplifier. Ignore this section if your installer has installed your system such that volume settings are entirely controlled by your in-wall or hand-held IntelliControl® system.

### Controlling the Volume of the DMS4 Digital Music Server Directly from the Remote

Each audio output must be configured individually to allow its volume to be controlled by the remote control.

#### Controlling the volume of an output

- Navigate to the **Settings** menu
- Use the **▲** and **▼** keys to select **Output Configuration** and press **✓Select**
- Use the **▲** and **▼** keys to select an audio output and press **✓Select**
- From the menu that appears choose **Volume** and press **✓Edit**
- Select **Variable** and press **□Save**

The **◀Volume** and **▶Mute** keys on the remote control will now control the volume of the chosen audio output.

### Reassigning the Remote's Volume Control to the Amplifier Output

The **◀Volume** and **▶Mute** keys on the remote control can be configured to control the volume on your amplifier while the **Audio Server** device is selected.

To reassign volume control

- Ensure the **Amp** device is correctly configured to control your amplifier (as described in **Configuring Your Remote to Control Other Devices** on page 11)
- Press the **Audio Server** and **✓Select** keys simultaneously; hold them down for 1 second

The **Audio Server** key will remain lit for 20 seconds; the configuration process must be completed during this time.

- Press the **▶Mute** key
- Press the **◀Vol+** key
- Press the **Amp** device key

The **Audio Server** device key will blink twice to indicate that the configuration has been accepted. If the **Audio Server** key does not blink begin the process again, taking care to press the buttons in the correct sequence. The **◀Volume** and **▶Mute** keys should now control the amplifier when the **Audio Server** device is selected.

To return the **◀Volume** and **▶Mute** keys to their original configuration repeat the above process, press the **Audio Server** key instead of the **Amp** key.

# CONNECTING YOUR DMS4 DIGITAL MUSIC SERVER

## BASIC CONNECTIONS

The diagram below illustrates the basic connections required to use your DMS4 Digital Music Server.

**Note:** Do not make any connections to the DMS4 Digital Music Server while the power supply is connected and switched on.

### Connecting the Audio

- Connect a stereo RCA audio cable to the **Analog Out 1** connectors on the rear of the DMS4 Digital Music Server. Connect the other end of this cable to an appropriate input on your pre-amplifier. In the same way connect the other **Analog Out** connectors to other stereo amplifiers as appropriate. Subsequently, connect the pre-amplifier to your stereo amplifier

### Connecting the Video

- Connect the yellow plug of the supplied composite video cable to the yellow **Video Out** socket of the DMS4 Digital Music Server. For most TVs connect the other end of this cable to the ext. 1 or 2 socket on the rear of your TV. For some TVs it may be necessary to use a SCART plug. In this case connect the other end of this cable to the yellow socket on the SCART plug. Now connect the SCART plug to the SCART socket in the rear of the TV

### Connecting to the Internet

- Connect an Ethernet cable to a free Ethernet socket on your network device or broadband router. Connect the other end of this cable to the socket marked **Ethernet** on the back panel of the DMS4 Digital Music Server

### Connecting the Power

- Connect the supplied power cord to your power supply.  
**Note:** be sure to use the correct power cord for your country

### Switching On

- Switch on your DMS4 Digital Music Server using the button labelled **STANDBY** on the front panel
- Switch on your television. Select the appropriate video channel to view the DMS4 Digital Music Server TV User Interface display

Your DMS4 Digital Music Server is now connected and ready for use. To take advantage of the DMS4 Digital Music Server's multi-room functionality, refer to the section overleaf entitled **Integrating the DMS4 Digital Music Server into an Intellicontrol® ICS System**

**Note:** In order to connect to the Internet in the below example it will be necessary to configure the DMS4 Digital Music Server's settings to connect using Ethernet. See the **Quick Start Guide** for more information.

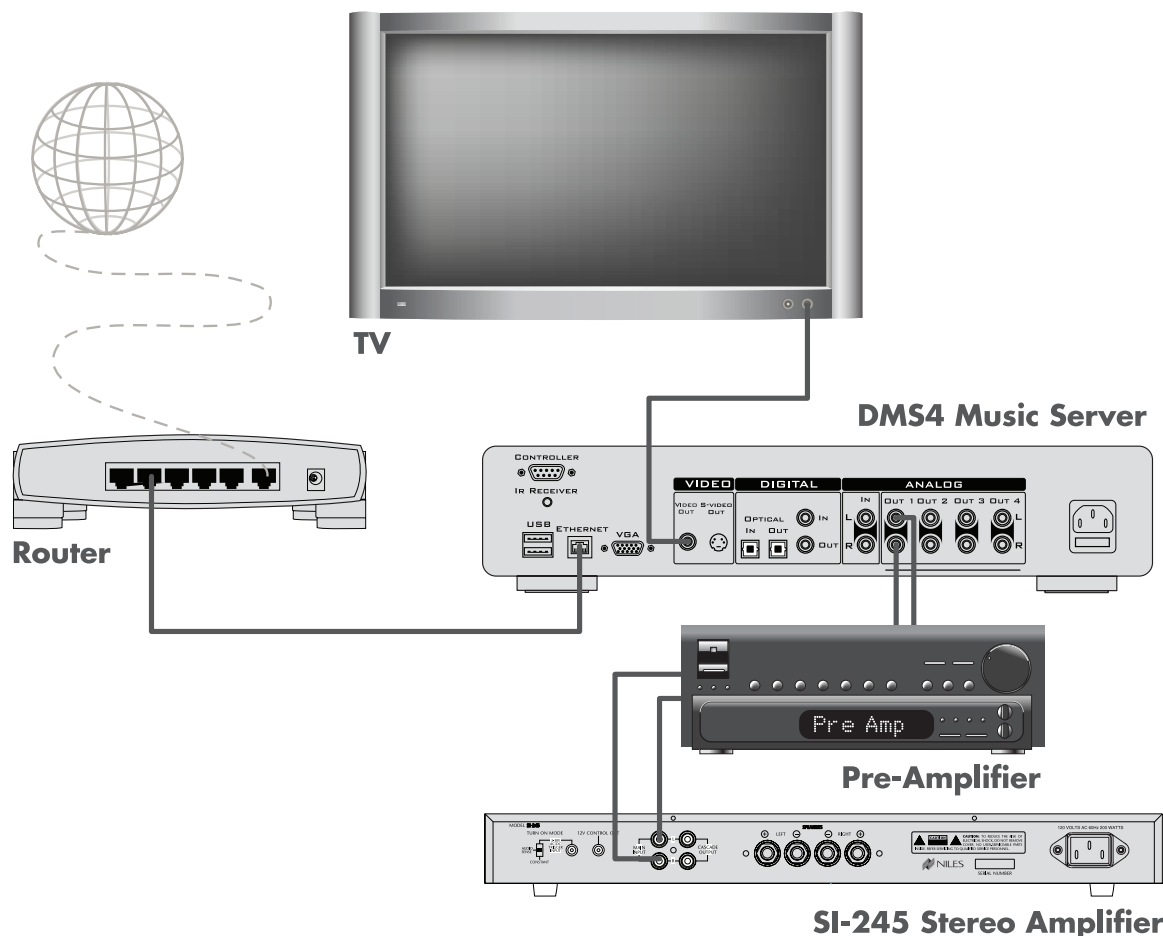


Fig. 2-1 Basic connectivity of a DMS4, network router, amplifier and TV

## INTEGRATING THE DMS4 DIGITAL MUSIC SERVER INTO AN INTELLICONTROL® ICS SYSTEM

A single IntelliControl® ICS DMS4 Digital Music Server is capable of playing different music in multiple rooms, or zones, simultaneously. This section explains how the DMS4 Digital Music Server can be integrated into a multi-room environment and how users in different rooms can access music from the Audio Library.

The below example integrates the DMS4 Digital Music Server with a GXR2 Modular MultiZone Receiver, with four IntelliControl® ICS IM-SERVER Cards, and a number of different control solutions. The following connections are made:

- Stereo RCA audio cables are connected between the DMS4 Digital Music Server's analog outputs and the analog inputs of the IM-SERVER cards in the GXR2
- A CAT-5 network cable is connected between the DMS4 Digital Music Server's Ethernet socket and the Router. Similar connections are made between the four IM-SERVER cards in the GXR2 and the Router. The Router is connected to the Internet

- CAT-5 network cables are also used to connect between the GXR2's Communication and Control Switch and the zone controllers
- 16/4 speaker wire is connected from zone speaker outputs on the GXR2 to stereo speakers in the four zones.

### Control Solutions

In the below example, four different control solutions are integrated with the DMS4 Digital Music Server.

- Zone 1 is connected to the IntelliControl® Single wall-mounted keypad
- Zone 2 is connected to the IntelliControl® DISPLAY wall-mounted keypad with 2" LCD display
- Zone 3 is connected to the IntelliControl® CONTACT wall-mounted keypad with 3.5" color touch screen display
- Zone 4 is connected to the IntelliControl® iREMOTE®; a 2-way handheld wireless remote control

For information about the above, or any other control solutions available from Niles, please contact your dealer or installer or visit [www.nilesaudio.com](http://www.nilesaudio.com).

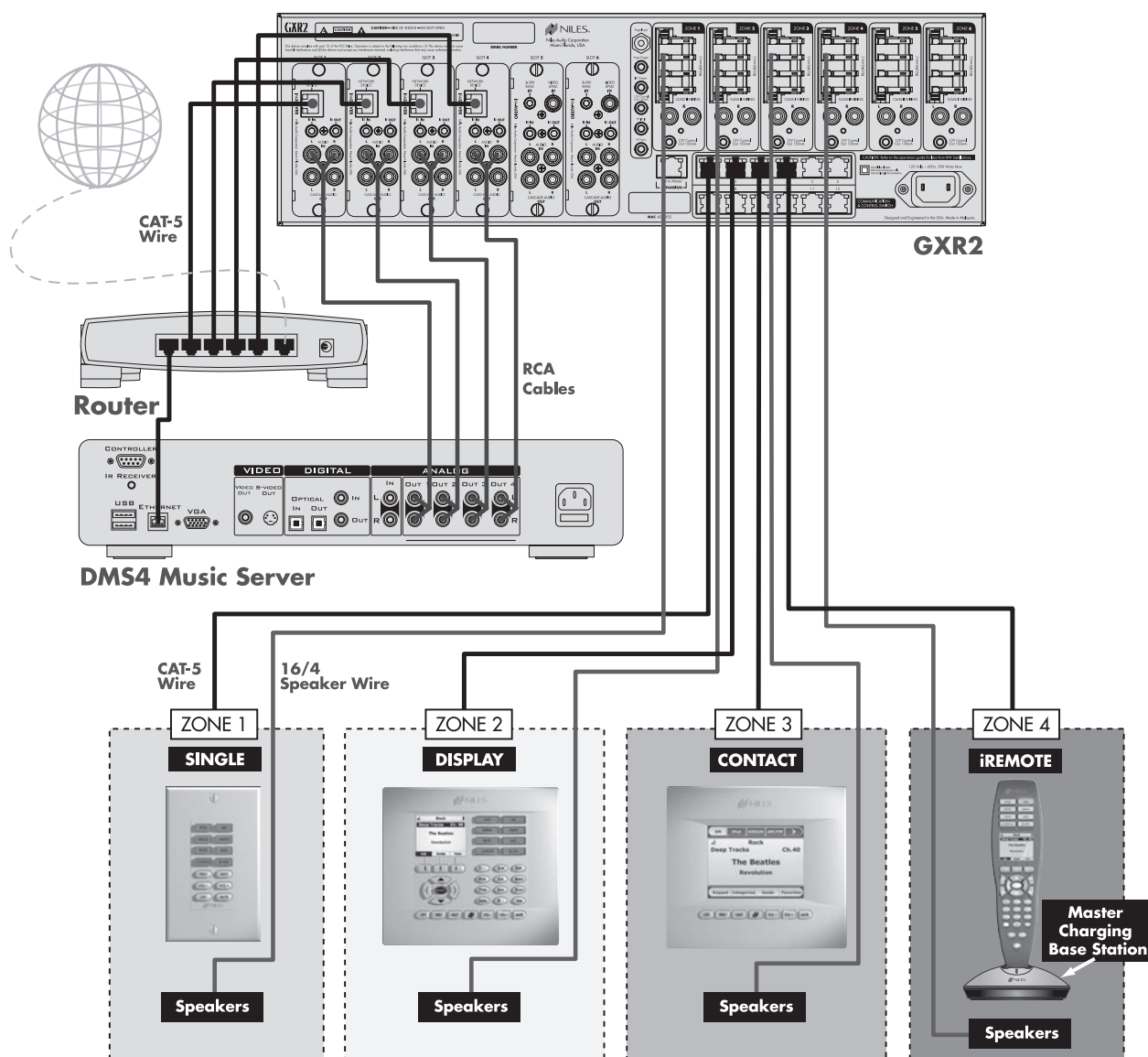


Fig. 2-2 Example connection of a DMS4 in a multi-room audio system

# RECORDING AND PLAYING MUSIC

This chapter explains how to operate your IntelliControl® ICS DMS4 Digital Music Server, including recording CDs onto the hard disk, navigating the Audio Library to select music for playback and organizing your music collection.

## THE MAIN MENU

The main functions of your DMS4 Digital Music Server are accessible via the **Main Menu**. The **Main Menu** is the first screen to be displayed when your DMS4 Digital Music Server is switched on.

Alternatively:

- From any screen of the television user interface, press the **Menu** key on your DMS4 Digital Music Server remote control

The **Main Menu** will be displayed:

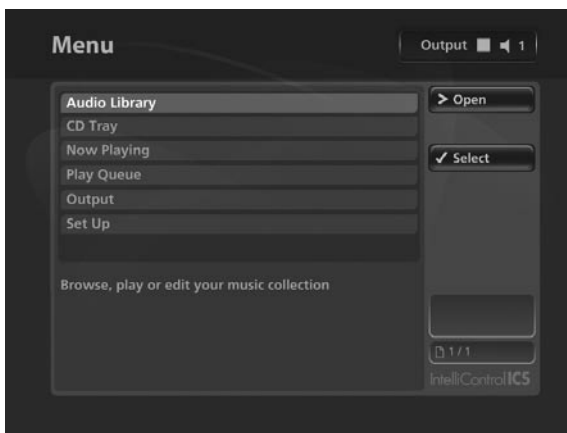


Fig. 3-1 DMS4 TV interface main menu screen

The options available from the **Main Menu** are as follows:

### Audio Library

Select this function to display the **Audio Library** screen. The Audio Library stores all of the music you record on to the hard disk of your DMS4 Digital Music Server.

See page 17 for information regarding the **Audio Library** and navigation techniques.

### CD Tray

Select this function to display the **CD Tray** screen. The **CD Tray** function is used to record or play CDs from the CD drive.

See the chapter entitled **Recording Music** on page 16 for more information about the **CD Tray** screen.

### Now Playing

Select this function to display the **Now Playing** screen for the currently selected audio output. You can also view this screen by pressing the **Now Playing** key on the remote control.

The **Now Playing** screen is explained in more detail in the section entitled **The Now Playing Screen** on page 23.

### Play Queue

Select the **Play Queue** option to view the library items queued to play on the currently selected audio output.

For details about using the play queue feature see the section entitled **The Play Queue** on page 25.

## Output

Select this function to choose which of the available audio outputs you wish to control.

Changing the controlled audio output is explained in greater detail in the section called **Switching Audio Outputs** on page 24.

## Set Up

Select this option to display the **Set Up** screen. From here you can access the **Settings** screen, the **Look Up Album Details** screen and the **Media Back Up and Restore** feature.

When you select the **Set Up** option, the following screen is displayed:

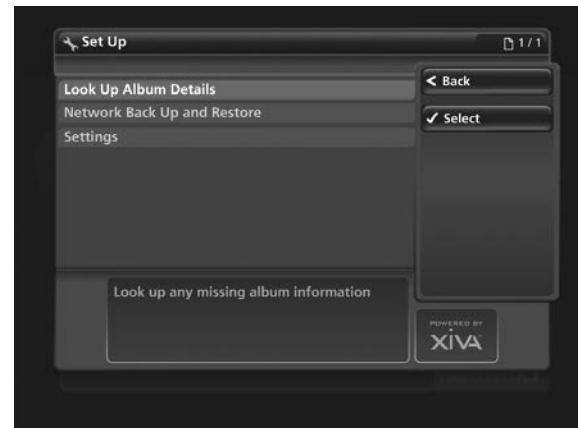


Fig. 3-2 DMS4 TV interface Set-Up menu screen

The following options are available on this screen:

### Look Up Album Details

Select this function to display the **Look Up Album Details** screen. If you have an Internet connection, use this function to retrieve album details from the Internet.

Refer to the section entitled **Recording Music**, which starts on page 16, for more information about this function.

### Network Back Up and Restore

Select this function to display the **Network Back Up and Restore** screen. This function allows you to back up all of the music in your **Audio Library** to a selected location.

The section explaining network back up and restore begins on page 40.

### Settings

Select this function to display the **Settings** screen. From here you can view and amend important settings used by your DMS4 Digital Music Server.

For more information refer to the chapter titled **System Settings** on page 34.

## RECORDING MUSIC

Your IntelliControl® ICS DMS4 Digital Music Server can make new recordings onto the hard disk by recording music directly from an audio CD placed in the CD tray.

Your DMS4 Digital Music Server can access the Internet to automatically retrieve information about the CD. This information includes the album name, artist name, track names and music genre from the Gracenote Music Recognition Service and an album cover illustration from the XiVA on-line service.

### Recording from a CD

- Press the **OPEN/CLOSE** button on the front panel to open the CD tray
- Place a CD in the tray
- Press the **OPEN/CLOSE** button on the front panel again to close the CD tray

Your DMS4 Digital Music Server will now automatically attempt to retrieve information about the CD from the Gracenote Music Recognition Service.

If you do not have an Internet connection, or the CD is not listed in the database, it will be given names such as Album 35, Artist 21, and Track 1, Track 2 etc. and it will be classified in genre **Unclassified**. Accurate album information can be entered manually at a later date using the **Edit Album Details** screen (see **Editing the Audio Library** on page 27).

- Press the **Menu** key on your DMS4 Digital Music Server remote control to display the **Main Menu**
- Use the **▲** or **▼** keys to select the **CD Tray** option
- Press the **✓Select** key

The **CD Tray** screen will display the contents of the CD:



Fig. 3-3 DMS4 TV interface CD Track screen

- Press the **Record** key

Depending on the configuration of your DMS4 Digital Music Server, you may now be presented with the **Recording Quality** options. By default, the **Quick Record** set up option is set to **enabled** and the recording quality will be determined by the **Default Recording Quality** set up option. If you have set the **Quick Record** option to **disabled**, you will be asked to choose the recording quality each time you record a CD.

- Use the **▲** or **▼** keys to choose either **Uncompressed WAV**, or one of the **MP3** or **WMA** compression options

**Note:** The higher quality options use more space on your DMS4 Digital Music Server hard disk, so you will not be able to record as many CDs. The amount of recording time left is displayed at the bottom of the screen as you scroll the compression options when recording a CD.

- Press the **✓Select** key to begin recording

The **CD Recording** screen, with progress indicator will be displayed:



Fig. 3-4 DMS4 TV interface CD Recording screen

Once recording is complete the new album will appear in the **Audio Library**.

- Press the **OPEN/CLOSE** button to remove the disc

If you have selected a recording quality using one of the MP3 or WMA compression settings, the compression process will begin immediately.

If there is no Internet connection present at the time of recording a CD, you can use **Look Up Album Details** from the **Main Menu** to retrieve any missing album details from the Internet.

- Press the **Menu** key to display the **Main Menu**
- Use the **▲** or **▼** keys and press the **✓Select** key to display the **Set Up** screen
- Use the **▲** or **▼** keys again to select the **Look Up Album Details** option
- Press the **Start** key to begin

### Listening to Music While Recording a CD

You can play music from the **Audio Library** while you are recording a CD.

- If you are already playing music from the **Audio Library** press the **Now Playing** key to return to displaying information about the track you are playing
- If you are not already playing music from the **Audio Library** or wish to change the music you are listening to, press the **Library** key on the DMS4 Digital Music Server remote control and select music as normal

At any time you can return to see the progress of your recording by selecting **CD Tray** from the **Main Menu**.

### Playing a CD

Your DMS4 Digital Music Server can play a CD directly from the CD tray without first recording it to the hard disk.

- Press the **OPEN/CLOSE** button on the front panel to open the CD tray
- Place a CD in the tray
- Press the **OPEN/CLOSE** button on the front panel again to close the CD tray
- Press the **Menu** key on your DMS4 Digital Music Server remote control to display the **Main Menu**
- Use the **▲** or **▼** keys to select the **CD Drive** option
- Press the **✓Select** key
- Press the **✓Play** key

**Note:** You cannot record a CD while playing from the CD tray.



## PLAYING MUSIC

This chapter explains how to play music that you have recorded onto your DMS4 Digital Music Server. It also explains how to locate the music you wish to play in a number of different ways.

### The Audio Library

The television user interface has been designed to allow easy navigation through the **Audio Library** and therefore give quick and easy access to your complete music collection in a number of different ways. Each screen in the **Audio Library** is carefully constructed to provide the most important information about the items you are viewing.

The illustration below shows how the **Audio Library** screens are structured and describes each part of the screen, the information displayed and the functions available. The example shows the **Tracks** screen for the album *Cold Water Songs*, however all navigation screens in the **Audio Library** are similar in construction.

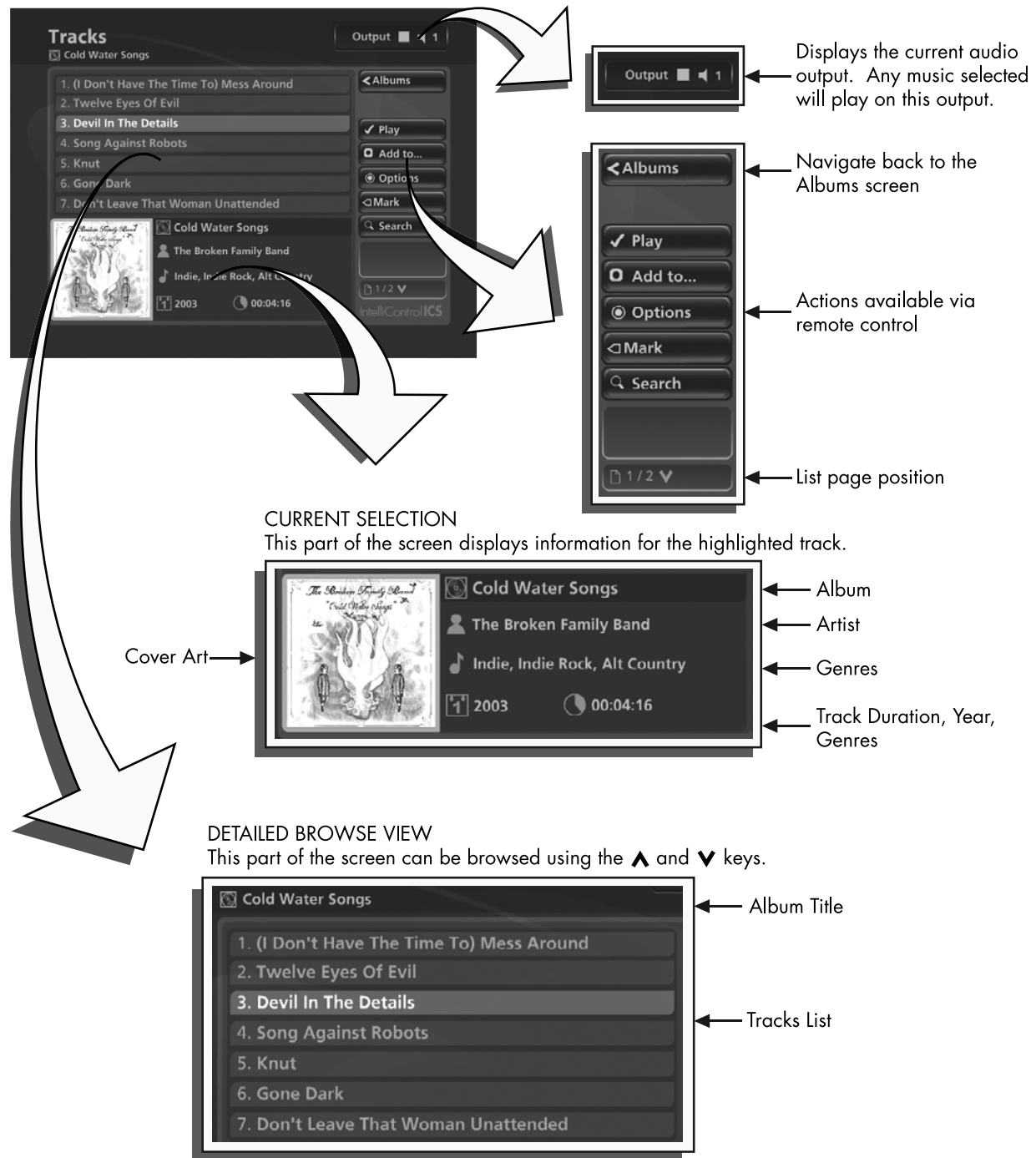


Fig. 3-5 Explanation of the DMS4 "Tracks" TV interface

## PLAYING MUSIC FROM THE AUDIO LIBRARY

The following sections contains a detailed explanation about selecting items in the **Audio Library** for playback.

### Displaying the Audio Library

Either:

- Press the **Library** key on your DMS4 Digital Music Server remote control from any screen

Or:

- Use the **▲** or **▼** keys on the **Main Menu** to highlight the **Audio Library** option and press **✓Select**

The **Audio Library** screen is displayed:

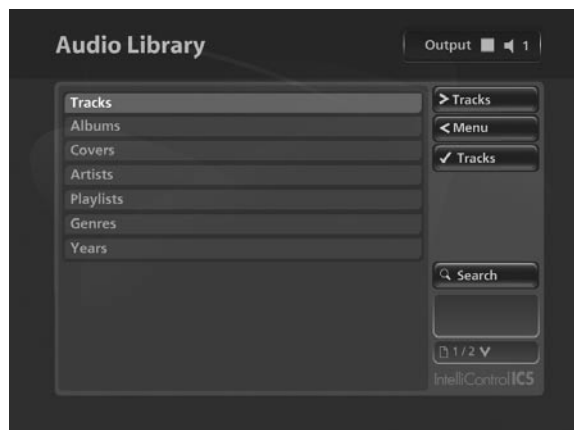


Fig. 3-6 DMS4 TV interface Audio Library screen

### Browsing the Audio Library by Track

- Use the **▲** or **▼** keys to highlight the **Tracks** option in the **Audio Library** Menu
- Press the **➤** key to display the **Tracks** screen

The TV screen will display the tracks in your **Audio Library**:



Fig. 3-7 DMS4 TV interface Tracks screen

- Press the **▲** or **▼** keys to step between tracks, or press the appropriate letter on your DMS4 Digital Music Server remote control to jump directly to that position in the list
- Alternatively, press the **QSearch** button and select **Tracks** to list just those tracks that contain a particular word or group of letters

### To play a particular track:

- Press the **✓Play** key to begin playback immediately, or press the **⊕Add** button to add this track to a playlist or the play queue
- Press the **◀** key to return to the **Audio Library**

### Browsing the Audio Library by Album

- Use the **▲** or **▼** keys to highlight the **Albums** option in the **Audio Library** Menu
- Press the **➤** key to display the **Albums** screen

The TV screen will display the albums in your **Audio Library**:



Fig. 3-8 DMS4 TV interface Albums text listing screen

- Press the **▲** or **▼** keys to step between albums, or press the appropriate letter on your DMS4 Digital Music Server remote control to jump directly to that position in the list
- Alternatively, press the **QSearch** button and select **Albums** to list just those albums that contain a particular word or group of letters

### To play the entire album:

- Press the **✓Play** key on your DMS4 Digital Music Server remote control to begin playback immediately, or press the **⊕Add** button to add this album to the play queue

### To select a particular track from this album:

- Press the **➤** key to open the album and display the tracks it contains
- Use the **▲** or **▼** keys to step between tracks
- Press the **✓Play** key to begin playback immediately, or press the **⊕Add** button to add this track to a playlist or the play queue
- Press the **◀** key to return to browsing by album

### Browsing the Audio Library by Covers

- Use the **▲** or **▼** keys to highlight the **Covers** option in the **Audio Library** Menu
- Press the **➤** key to display the **Covers** screen

The TV screen will display the album covers in your **Audio Library**:

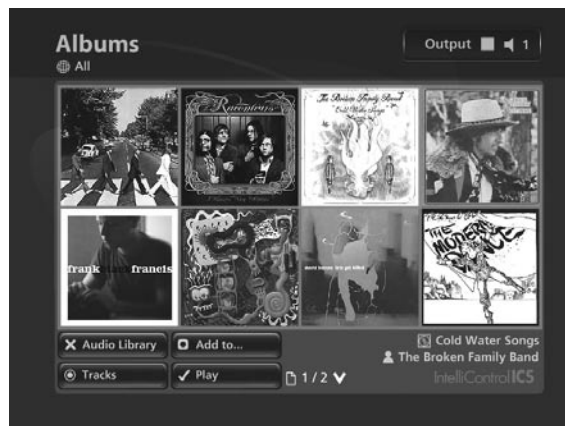


Fig. 3-9 DMS4 TV interface Album Covers screen

- Use the **▲**, **▼**, **◀** and **▶** keys to move around the grid of available covers

To play the entire album:

- Press the **✓Play** key on your DMS4 Digital Music Server remote control to begin playback immediately, or press the **⓪Add to...** button to add this album to the play queue

To select a particular track from this album:

- Press the **⓪Options** key to open the album and display the tracks it contains
- Use the **▲** or **▼** keys to step between tracks
- Press the **✓Play** key to begin playback immediately, or press the **⓪Add to...** button to add this track to a playlist
- Press the **◀** key to return to browsing by album cover

**Note:** To exit the covers screen use the **✕** key.

**Browsing the Audio Library by Artist**

- Use the **▲** or **▼** keys to highlight the **Artists** option in the **Audio Library** Menu
- Press the **▶** key to display the **Artists** screen

The TV screen will display the artists in your **Audio Library**:



Fig. 3-10 DMS4 TV interface Artists screen

- Press the **▲** or **▼** keys to step between artists, or press the appropriate letter on your DMS4 Digital Music Server remote control to jump directly to that position in the list
- Alternatively, press the **🔍Search** button and select **Artists** to list just those artists that contain a particular word or group of letters

To play all albums by the selected artist:

- Press the **✓Play** key on your DMS4 Digital Music Server remote control to begin playback immediately, or press the **⓪Add** button to add all albums by the selected artist to a playlist or the play queue

To select a particular album by the selected artist:

- Press the **▶** key to display all available albums by the selected artist
- Use the **▲** or **▼** keys to step between albums

Either:

- Press the **✓Play** key to begin playback immediately, or press the **⓪Add** button to add this album to a playlist

Or:

- Press the **▶** key again to select a track from within the album

Or:

- Press the **◀** key to return to browsing by artists

**Browsing the Audio Library by Genre**

- Use the **▲** or **▼** keys to highlight the **Genres** option in the **Audio Library** Menu
- Press the **▶** key to display the **Genres** screen

The TV screen will display the genres in your **Audio Library**:



Fig. 3-11 DMS4 TV interface Genres screen

- Use the **▲** or **▼** keys to step between genres
- Alternatively, press the **🔍Search** button and select **Genres** to list just those genres that contain a particular word or group of letters

To play all albums in the selected genre:

- Press the **✓Play** key on your DMS4 Digital Music Server remote control to begin playback immediately, or press the **⓪Add** button to add all albums in the selected genre to a playlist

To select a particular album in the selected genre:

- Press the **▶** key to display all artists within the selected genre
- Use the **▲** or **▼** keys to step between artists
- Press the **▶** key again to display all albums by a particular artist
- Use the **▲** or **▼** keys to step between albums

Either:

- Press the **✓Play** key to begin playback immediately, or press the **⓪Add** button to add this album to a playlist or the play queue

Or:

- Press the **◀** key to return to browsing by genres

## Browsing the Audio Library by Year

- Use the **▲** or **▼** keys to highlight the **Years** option in the **Audio Library** Menu
- Press the **▶** key to display the **Years** screen

The TV screen will display the years available in your **Audio Library**:

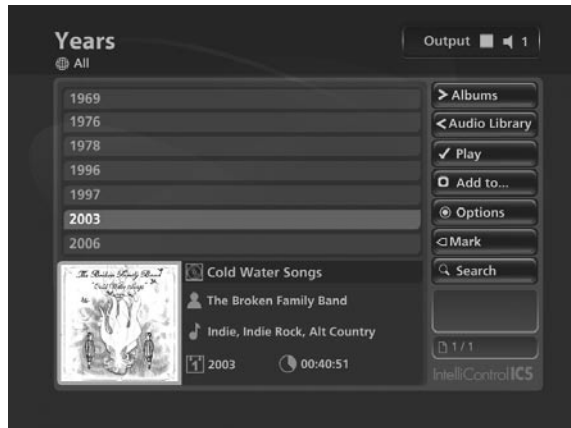


Fig. 3-12 DMS4 TV interface showing browsing by Year screen

- Use the **▲** or **▼** keys to step between years, or press the appropriate key on the alphanumeric keypad to jump directly to that position in the list

To play all albums in the selected year:

- Press the **✓Play** key on your DMS4 Digital Music Server remote control to begin playback immediately, or press the **⊕Add** button to add all albums in the selected year to a playlist

To select a particular album in the selected year:

- Press the **▶** key to display all albums within the selected year
- Use the **▲** or **▼** keys to step between albums

Either:

- Press the **✓Play** key to begin playback immediately, or press the **⊕Add** button to add this album to a playlist or the play queue

Or:

- Press the **◀** key to return to browsing by years

## Browsing the Audio Library by Era

- Use the **▲** or **▼** keys to highlight the **Eras** option in the **Audio Library** menu
- Press the **▶** key to display the **Eras** screen

The TV screen will display the eras in your **Audio Library**:



Fig. 3-13 DMS4 TV interface showing browsing by Eras screen

- Use the **▲** or **▼** keys to step between eras, or press the appropriate key on the alphanumeric keypad to jump directly to that position in the list

To play all albums in the selected era:

- Press the **✓Play** key on your DMS4 Digital Music Server remote control to begin playback immediately, or press the **⊕Add** button to add all albums in the selected era to a playlist

To select a particular album in the selected era:

- Press the **▶** key to display all albums within the selected era
- Use the **▲** or **▼** keys to step between albums

Either:

- Press the **✓Play** key to begin playback immediately, or press the **⊕Add** button to add this album to a playlist or the play queue

Or:

- Press the **◀** key to return to browsing by eras

## Browsing Playlists in the Audio Library

Playlists allow you to create your own selections of tracks and save them with a name of your choice such as *Party Music*. For more information about creating a playlist refer to **Creating a new Playlist** on page 25.

- Use the **▲** or **▼** keys to highlight the **Playlists** option in the **Audio Library** Menu
- Press the **▶** key to display the **Playlists** screen

The TV screen will display the playlists in your **Audio Library**:

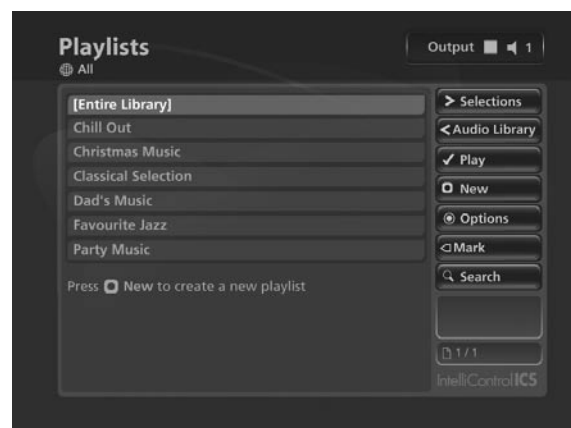


Fig. 3-14 DMS4 TV interface Playlists screen

**Note:** If you have not yet created any playlists the list will be

empty.

- Press the ▲ or ▼ keys to step between playlists, or press the appropriate letter on your DMS4 Digital Music Server remote control to jump directly to the item in the list beginning with that letter
- Press the ✓Play key on your DMS4 Digital Music Server remote control to begin playback immediately, or press the ◻Add key to add all tracks in the selected playlist to another playlist

### Browsing Presets in the Audio Library

Presets provide instant one-button playback from selected control systems. For more information about storing presets refer to **Storing a Preset** on page 26.

- Use the ▲ or ▼ keys to highlight the **Presets** option in the **Audio Library** menu
- Press the ► key to display the **Presets** screen

The TV screen will display the presets in your **Audio Library**:

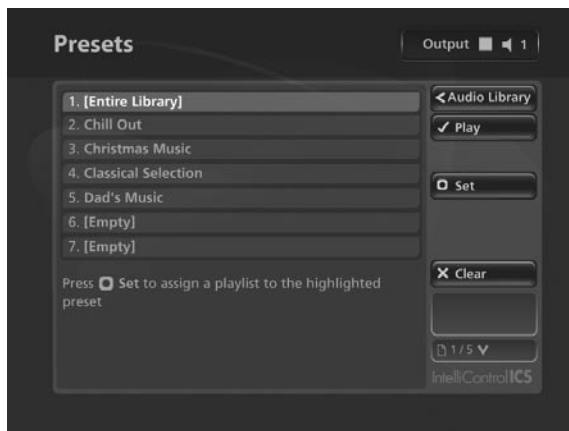


Fig. 3-15 DMS4 TV interface Presets screen

- Press the ▲ or ▼ keys to step between presets, or press the appropriate letter on your DMS4 Digital Music Server remote control to jump directly to the item in the list beginning with that letter
- Press the ✓Play key on your DMS4 Digital Music Server remote control to begin playback

### Playing the Entire Library

In addition to the ability to select individual items in the **Audio Library**, you can also choose to play your entire music collection with a single button press.

#### To Play the entire Library

- Press the ≡Menu key on your DMS4 Digital Music Server remote control to display the **Main Menu** screen
- Press the ◻Play Library key

Initiating playback of your entire **Audio Library** in this way will automatically enable shuffle and repeat.

Alternatively:

- Press the ◻Library key on your remote control to display the **Audio Library** screen
- Use the ▲ or ▼ keys to highlight the **Playlists** option and press ✓Select
- Use the ▲ or ▼ keys again to highlight the playlist entitled **[Entire Library]** and press ✓Play

Initiating playback of your entire **Audio Library** in this way will not automatically enable shuffle and repeat.

### Selecting Items Directly Using Your DMS4 Digital Music Server Remote Control

You can select an item from your **Audio Library** directly by the first letter of its title using the alphanumeric keypad on your DMS4 Digital Music Server remote control.

#### To select a library item by name:

- Display the appropriate **Audio Library** screen for the item you want to find (e.g. **Artists**)
- Press the alphanumeric keypad key corresponding to the first letter of the item you want to select

For example to find the artist *Santessa* navigate to the **Artists** screen, then press the 7 key four times because S is the fourth letter on the 7 key. The TV screen shows the first artist beginning with the letter S.

If there are several artists beginning with the letter S press the ▼ key to step through until you find the artist for which you are looking.

- Press the 1 key to return to the top of the list

Alternatively, you can use the A-z function to select a library item by initial letter:

- Display the appropriate library menu for the item you want to find (e.g. **Artists**)
- Press the A-z key on your DMS4 Digital Music Server remote control

The TV screen displays a list of letters which correspond to the starting letter of the items available in the chosen list:



Fig. 3-16 DMS4 TV interface showing direct selection screen

- Use the ▲ or ▼ keys to step between the letters in the list and highlight the starting letter of the item you are trying to locate
- Press the ✓Select key

The TV screen will display the first artist beginning with the letter S.

If there are several artists beginning with the letter S press the ▼ key to step through until you find the artist for which you are looking.

- Press the 1 key to return to the top of the list

## THE SEARCH FUNCTION

The search function can be used from any **Audio Library** screen to reduce the items in the current list to only those that contain a particular word or collection of characters.

To use the search function, press the **Q Search** key on your DMS4 Digital Music Server remote control from any screen in the **Audio Library**. Choose to search either **Tracks**, **Albums**, **Artists** or **Genres** and press the **✓ Select** key. The below screen is displayed. Use the alphanumeric keypad to enter text and press the **✓ OK** key. A list of items containing your search criteria will then be displayed.

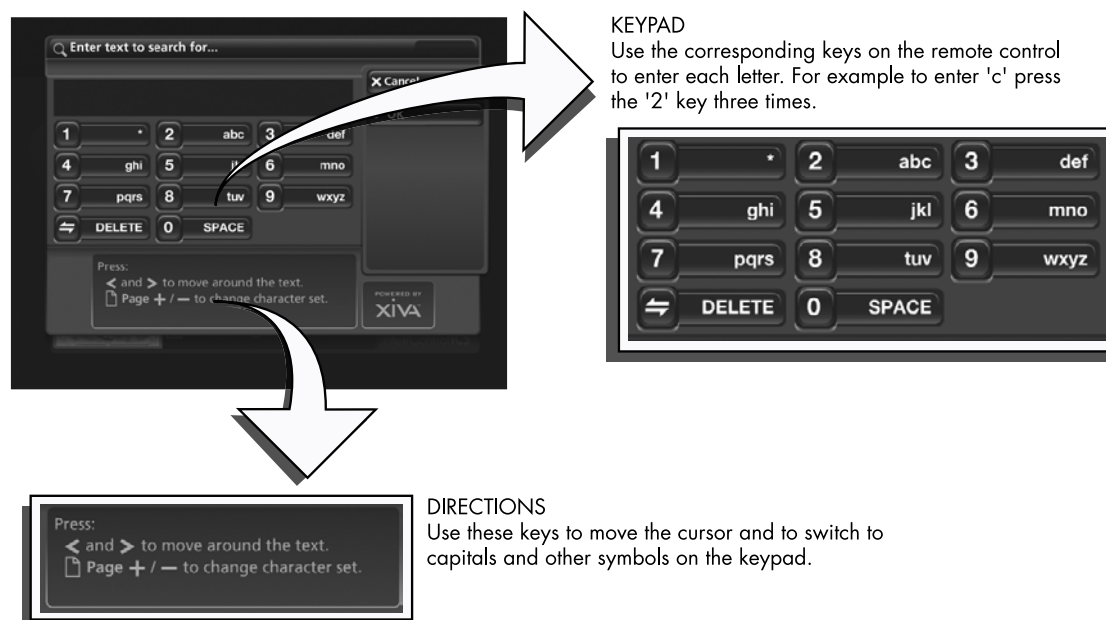


Fig. 3-17 The DMS4 Search function via the TV interface

## THE MARK FUNCTION

The mark function can be used to select multiple items within a list in the **Audio Library**. You can then perform a single action to be applied to all of the marked items rather than performing the same action on each item individually.

For example:

### To delete multiple albums from the Audio Library

- Press the **Library** key on your DMS4 Digital Music Server remote control to display the **Audio Library**
- Press the **▲** or **▼** keys to highlight **Albums** and press the **✓ Select** key to display the **Albums** list
- Use the **▲** or **▼** keys again to highlight an album you wish to delete
- Press the **◀ Mark** key

The mark symbol will appear next to the marked album:



Fig. 3-18 The DMS4 Mark function

Place a mark symbol next to the other albums you wish to delete.

- Press the **Options** key and highlight **Delete marked albums**
- Press the **✓ Select** key

If there are less than one hundred items in a list, you also have the option to mark all of the items in a list, without having to go through them individually.

For example:

### To delete all the albums by a particular artist

- Press the **Library** key on your DMS4 Digital Music Server remote control to display the **Audio Library**
- Press the **▲** or **▼** keys to highlight **Artists** and press the **✓ Select** key to display the **Artists** list
- Use the **▲** or **▼** keys again to highlight an artist and press the **>** key

A list of all the albums by the chosen artist is displayed.

- Press the **Options** key and choose **Mark all**
- Press the **✓ Select** key
- Press the **Options** key again and choose **Delete marked albums**
- Press the **✓ Select** key

**Note:** If pressing the **◀ Mark** key has no effect, then the mark function is not available on the current screen.

## THE NOW PLAYING SCREEN

The illustration below shows the **Now Playing** screen. Whenever you select an item in the **Audio Library** for playback, this screen is displayed. You can also choose to display this screen at any time by pressing the **Now Playing** key on your DMS4 Digital Music Server remote control. When you make this selection, your DMS4 Digital Music Server will display the **Now Playing** screen for the currently selected audio output. If your DMS4 Digital Music Server has multiple audio outputs, you will also have multiple **Now Playing** screens which are selectable using the **Output** key on your DMS4 Digital Music Server remote control (refer to page 24 for more information).

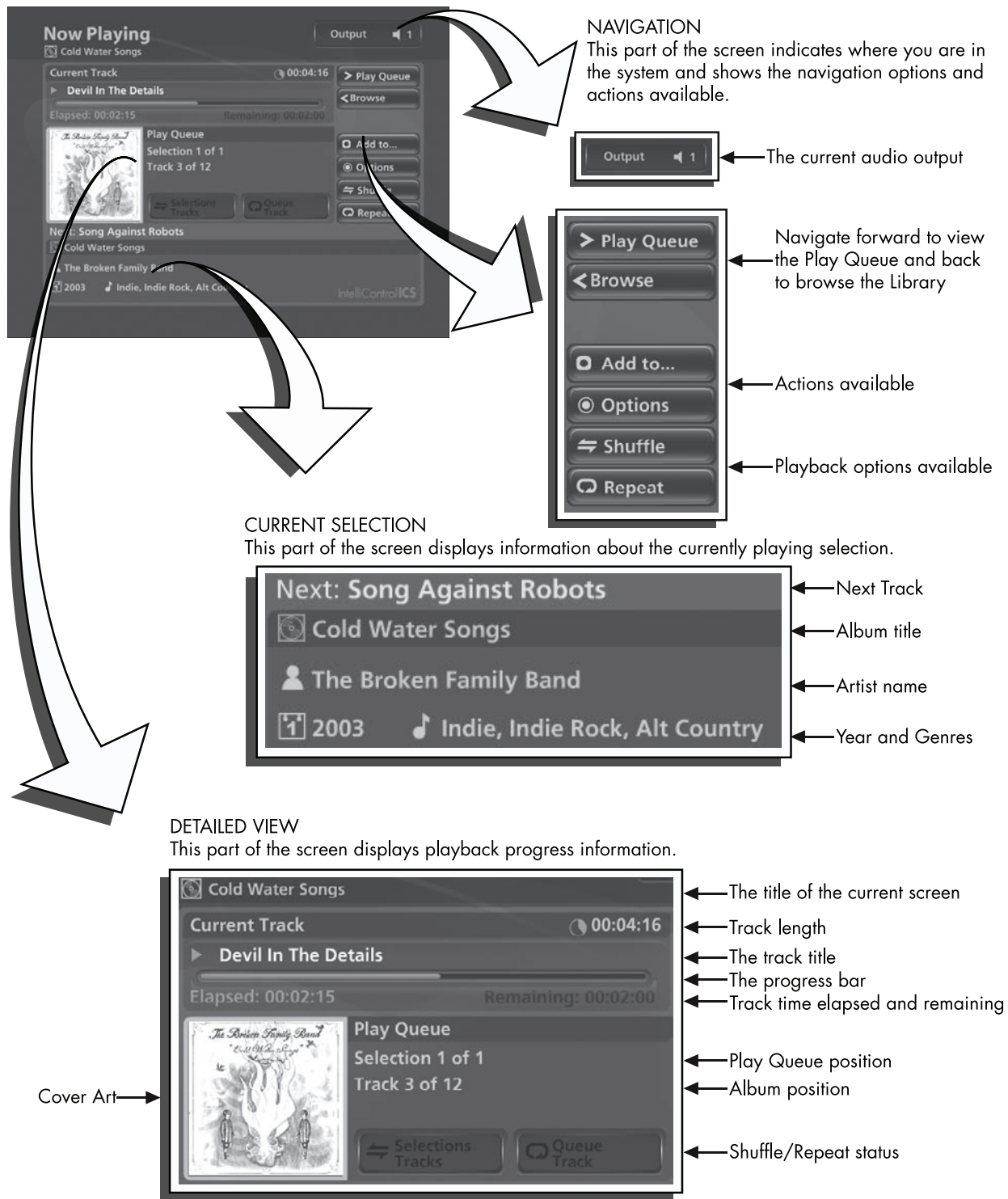


Fig. 3-19 Diagram showing the various aspects of the DMS4's Now Playing screen

## Switching Audio Outputs

Depending on the configuration you have purchased, your IntelliControl® ICS DMS4 Digital Music Server may be capable of playing different music in several rooms simultaneously. If you wish to play music in a particular room, you must first choose the correct audio output.

### To select an Audio Output

- Press the **Output** key on your DMS4 Digital Music Server remote control

The following screen is displayed:



Fig. 3-20 Switching the TV user interface to control each of the DMS4's audio outputs

- Use the **▲** or **▼** keys to select an audio output
- Press the **✓Select** key

You are now in control of the audio output you have selected and items you select for playback in the **Audio Library** will play on this audio output.

You can view the playback status of the currently selected output at any time by pressing the **Now Playing** key on your DMS4 Digital Music Server remote control.

## Controlling Playback

Whether you are playing music from the **Audio Library** or directly from the CD you can pause, stop and resume playback as well as seek and skip tracks at any time.

### To pause play

- Press the **||** key on the front panel or your DMS4 Digital Music Server remote control

### To stop play

- Press the **■** key on the front panel or your DMS4 Digital Music Server remote control

### To resume play

- Press the **▶** key on the front panel or your DMS4 Digital Music Server remote control

### To skip to the next or previous track

- Press the **◀◀** or **▶▶** key on the front panel or your DMS4 Digital Music Server remote control

The front panel display shows the number of each track as you skip between them.

### To seek within a track

- Hold down the **◀◀** or **▶▶** key on the front panel or your DMS4 Digital Music Server remote control

Play resumes from the new position when you release the key.

## Shuffle and repeat playback

Your DMS4 Digital Music Server lets you play selections from the **Audio Library** in a shuffled order to add variety to your music. You can also play selections repeatedly.

### To shuffle the playback order

- Press the **⇄** key on your DMS4 Digital Music Server remote control to randomize the order of the selections in the play queue
- Press the **⇄** key a second time to shuffle all of the tracks in the play queue. This will also turn on repeat mode for continuous playback of all tracks
- Press the **⇄** key a third time to disable shuffle

### To repeat the current selection

- Press the **🔄** key on your DMS4 Digital Music Server remote control to repeat the currently playing track
- Press the **🔄** key a second time to repeat the entire play queue
- Press the **🔄** key a third time to disable repeat

The front panel and TV screen both indicate that shuffle and repeat are enabled.

## Now Playing Screen Options

There are a number of options available from the **Now Playing** screen.

- Press the **Now Playing** key on your DMS4 Digital Music Server remote control to display the **Now Playing** screen
- Press the **Options** key

The following screen is displayed:



Fig. 3-21 DMS4 TV interface Now Playing Options screen

### Jump to album

- Use the **▲** or **▼** keys to select **Jump to album**
- Press the **✓Select** key

The currently playing album will be displayed.

### Jump to artist

- Use the **▲** or **▼** keys to select **Jump to artist**
- Press the **✓Select** key

All albums by the currently playing artist will be displayed.

### Jump to genre

- Use the **▲** or **▼** keys to select **Jump to genre**
- Press the **✓Select** key

All artists in the same genre as the currently playing track will be displayed.

From this options screen, you also have the choice to edit album or track details. For instructions regarding the use of



these options, refer to the **Editing the Audio Library** chapter on page 27.

### The Play Queue

Any item in your **Audio Library** can be selected for playback in one of two ways:

- Press the **✓Play** key to begin playback immediately, ending playback of any current music selection
- Press the **⊞Add** key and select the **[Play Queue]** option
- Press the **⊞Add** key to add the selected item to the end of the play queue. For example, if you are currently playing an album, the item you have selected will not begin playing until the album has finished

Alternatively:

- Press the **✓Add & Show** key to add the selected item to the play queue and display the play queue screen

To display the play queue:

- Display the **Now Playing** screen by pressing the **⊞Now Playing** key on your DMS4 Digital Music Server remote control
- Press the **➤** key to display the play queue



Fig. 3-22 DMS4 TV Interface showing Play Queue

To remove a selection from the play queue

- Use the **▲** or **▼** keys to highlight the selection you would like to remove from the queue
- Press the **✕Delete** key

To clear the play queue

- Press the **⊞Options** key and choose **Clear Play Queue**

To move a selection in the play queue

- Press the **◀Mark** key twice to place a **◀Move** symbol next to the selection you wish to move
- Use the **▲** or **▼** keys to move the selection to a new place in the play queue
- Press the **◀Mark** key again to remove the **◀Move** symbol

To save a play queue as a playlist

You can save a play queue as a playlist so that you can listen to the same collection of music at a later time.

- From the **Play Queue** screen press the **⊞Options** key on your DMS4 Digital Music Server remote control
- Choose **Save Play Queue as playlist...** and, in the screen that appears, enter a name for the play list using the alphanumeric keypad
- Press the **✓Ok** key and the current play queue will now be available as a playlist in the **Audio Library**

## ORGANIZING YOUR MUSIC COLLECTION

This chapter describes the features built into your DMS4 Digital Music Server to help you organize the music in your **Audio Library**, including information about creating playlists of your favorite tracks, deleting albums or tracks you no longer want to store, and naming albums, tracks, and artists.

### PLAYLISTS

Your DMS4 Digital Music Server allows you to create your own selections, called playlists, and identify them with a name of your choice. For example, you could select your favorite party tracks from a number of different albums and include them in a playlist called *Party Music*. You can then play your selection simply by choosing the appropriate playlist from the **Playlist** screen.

Creating a New Playlist

- Display the **Audio Library** by pressing the **⊞Library** key on your DMS4 Digital Music Server remote control
- Press the **▲** or **▼** keys to highlight the **Playlists** option and press the **✓Select** key

The following screen will be displayed, listing your existing playlists:

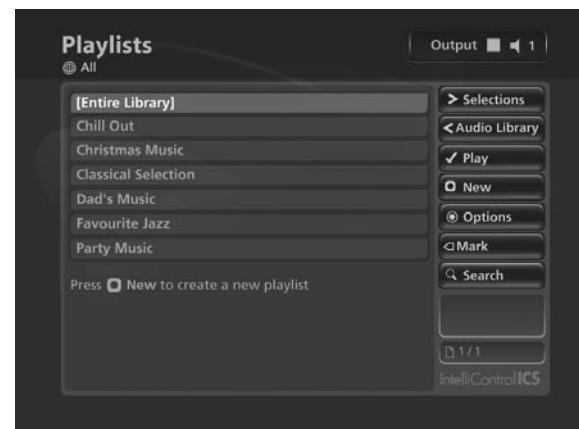


Fig. 4-1 DMS4 TV interface Playlists screen

- Press the **⊞New** key on your DMS4 Digital Music Server remote control
- Use the alphanumeric keypad to enter a name for the new playlist and press the **✓Ok** key

Your new playlist will now appear in the list.

Adding Music to a Playlist

You can add music from your **Audio Library** to a playlist from any library screen, by using the **⊞Add** key on your DMS4 Digital Music Server remote control.

For example, to add an album to a playlist:

- Press the **⊞Library** key on your DMS4 Digital Music Server remote control to display the **Audio Library**
- Press the **▲** or **▼** keys to highlight **Albums** and press the **✓Select** key to display the albums list
- Use the **▲** or **▼** keys to highlight the album you wish to add to a playlist
- Press the **⊞Add to...** key

The following screen is displayed:



Fig. 4-2 Adding music to a playlist on a DMS4

- Use the **▲** or **▼** keys to select the playlist to which you would like to add the selected album

Alternatively, use the **New** key to create a new playlist as described in the previous section.

- Press the **Add** key to add the album to the playlist

Alternatively:

- Press the **Add & Show** key to add the album to the playlist and display the playlist's contents

You can also use the **Mark** key to mark multiple items in the **Audio Library** and then add them to a playlist using the above method.

## Editing Playlists

To edit a playlist name

- From the **Playlists** screen, use the **▲** or **▼** keys to highlight the playlist you wish to edit
- Press the **Options** key and choose **Edit Playlist Name**
- Use the alphanumeric keypad to edit the playlist name and then press the **OK** key

To remove an item from a playlist

- Use the **▲** or **▼** keys to highlight the item you would like to remove from the playlist
- Press the **Delete** key

To delete multiple items from a playlist use the **Mark** key to mark the items you wish to remove and then follow the process described above.

To move an item in a playlist

- Use the **▲** or **▼** keys to highlight the item you would like to move in the playlist
- Press the **Mark** key twice to place a **Move** symbol next to the item you wish to move
- Use the **▲** or **▼** keys to move the selection to a new place in the playlist
- Press the **Mark** key again to remove the **Move** symbol

To delete a playlist

- From the **Playlists** screen, use the **▲** or **▼** keys to highlight the playlist you wish to delete
- Press the **Options** key and choose **Delete playlist**
- Press the **Yes** key to confirm the deletion

To delete multiple playlists use the **Mark** key to mark the playlists you wish to remove and then follow the process described above.

## PRESETS

Presets are simple playlists that can be used in the same way as a preset station on your radio tuner. For example, you may have a preset which plays a random selection from your entire **Audio Library**. Although you can select a preset for playback using the TV user interface, presets are more commonly used by simple multi-room control systems and remote controls to trigger playback without referring to the TV screen. Before a preset can be used a playlist must be assigned to that 'station':

Storing a Preset

- Display the **Audio Library** by pressing the **Library** key on your DMS4 Digital Music Server remote control
- Press the **▲** or **▼** keys to select **Presets** and press the **➤** key

The existing presets will be displayed:

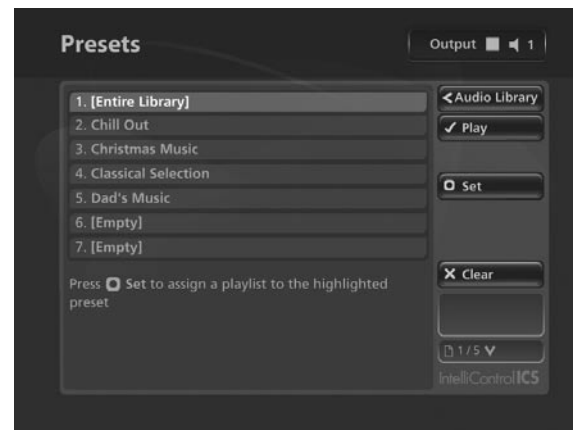


Fig. 4-3 DMS4 TV interface Presets screen

If you have not previously stored a preset all the names will be labelled **[Empty]**.

- Press the **▲** or **▼** keys to select the **Preset** you would like to program and press the **Set** key

The following screen is displayed:

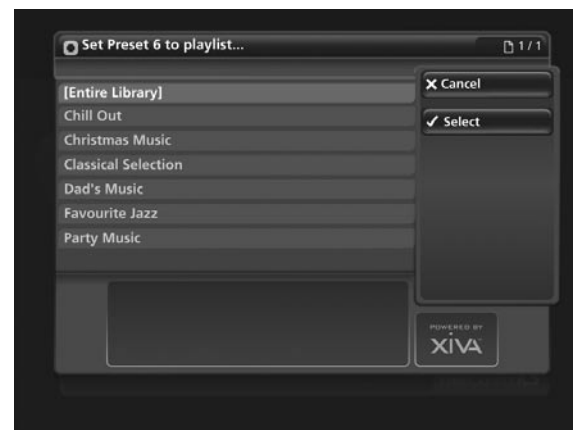


Fig. 4-4 Setting up a Preset via the DMS4 TV interface

- Press the **▲** or **▼** keys to select the **Playlist** you would like to assign and press the **Select** key

The new preset will automatically be given the same name as the playlist assigned to it.

To clear a preset

- Use the **▲** or **▼** keys to highlight the preset you would like to clear
- Press the **Clear** key
- Press the **Yes** key to confirm

## EDITING THE AUDIO LIBRARY

Your IntelliControl® ICS DMS4 Digital Music Server labels the albums, artists and tracks in your **Audio Library** with names which identify the track you are listening to, and these help you locate items when you are browsing through the **Audio Library**.

If you have an Internet connection, your DMS4 Digital Music Server reads the CD information automatically from the Gracenote Music Recognition Service. You can edit these names at any stage to suit your own preferences.

### Editing Album Information

- Press the **Library** key on your DMS4 Digital Music Server remote control to display the **Audio Library**
- Press the **▲** or **▼** keys to select **Albums** and press the **➤** key
- Use the **▲** or **▼** keys again to highlight the album you wish to edit
- Press the **Options** key, choose **Edit Album Details** and press the **Select** key

The following screen is displayed:



Fig. 4-5 DMS4 TV interface showing the editing of Album information

- Use the **▲** or **▼** keys to highlight either **Name**, **Artists**, **Genres**, **Year** or **Era**
- Press the **Edit** key
- Use the alphanumeric keypad to edit the text and press the **OK** key

When you have finished making changes to an album's details make sure you press the **Save** key.

If, for example, multiple genres are applicable to an album these can be entered by pressing the **RETURN** key on the remote control between entries, while editing the genre field.

### Editing Track Information

- Press the **Library** key on your DMS4 Digital Music Server remote control to display the **Audio Library**
- Press the **▲** or **▼** keys to select **Tracks** and press the **➤** key
- Use the **▲** or **▼** keys again to highlight the track you wish to edit
- Press the **Options** key and choose **Edit Track Details**

The following screen is displayed:



Fig. 4-6 DMS4 TV interface showing the editing of Track information

- Use the **▲** or **▼** keys to highlight either **Name**, **Artists**, **Genres**, **Year**, **Era** or **Artwork**
- Press the **Edit** key
- Use the alphanumeric keypad to edit the title and press the **OK** key

When you have finished making changes to a track's details make sure you press the **Save** key.

### Editing Genre, Year and Era names

- Press the **Library** key on your DMS4 Digital Music Server remote control to display the **Audio Library**
- Press the **▲** or **▼** keys to select either **Genres**, **Years** or **Eras** and press the **➤** key
- Use the **▲** or **▼** keys again to highlight the genre, year or era you wish to edit
- Press the **Options** key and choose the **Edit name** option
- Use the alphanumeric keypad to enter a new name for the genre, year or era

### Selecting Album Artwork

Your DMS4 Digital Music Server stores a number of generic cover art images that can be applied to albums in your **Audio Library**. You can also choose to apply cover art that has been downloaded from the XiVA Online Service to any album in the **Audio Library**.

- Highlight the album in your **Audio Library** to which you would like to apply a cover art image
- Press the **Options** key
- Use the **▲** and **▼** keys to select **Edit Album Details** and press the **Select** key
- Choose the **Artwork** option and press the **Edit** key

The following screen, listing all of the cover art images stored on your DMS4 Digital Music Server, is displayed:

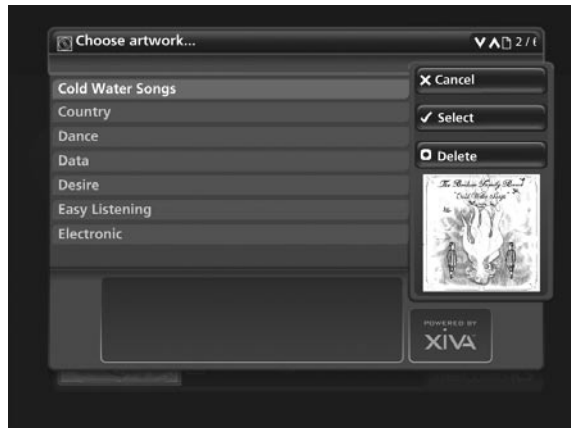


Fig. 4-7 Assigning a cover art image to an album on a DMS4 via the TV interface

- Use the **▲** or **▼** keys to scroll through the cover art images
- Press the **✓ Select** key to associate a piece of artwork with your chosen album

It is also possible to upload images from your PC to your DMS4 Digital Music Server and apply these to albums in your **Audio Library**. For more information, refer to the section titled **Importing Files To Your DMS4 Digital Music Server** on page 39.

#### Deleting Albums and Tracks

- Press the **Library** key on your DMS4 Digital Music Server remote control to display the **Audio Library**
- Press the **▲**, **▼** and **➤** keys to navigate to the album or track you would like to delete
- Press the **Options** key and choose **Delete track** or **Delete album** where appropriate

A confirmation screen will appear:

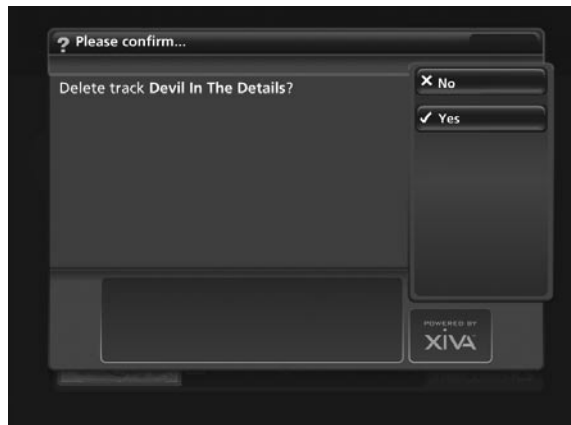


Fig. 4-8 Deleting Albums and Tracks via the DMS4 TV interface

- Press the **✓ Yes** key to confirm deletion of the album or track

**Note:** Any items you choose to delete will be permanently erased from your DMS4 Digital Music Server's hard disk. Anything you delete by accident will need to be re-recorded.

## THE FRONT PANEL INTERFACE

In addition to the user interface displayed on your television screen, the IntelliControl® ICS DMS4 Digital Music Server also has a user interface accessible via the LCD display and buttons on the front panel of the unit. This is an abridged version of the television user interface and provides access to a limited number of controls and functions.

Press the button labelled **MENU** on the front of the unit to display the following screen on the front panel LCD display:

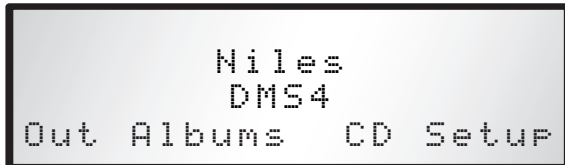


Fig. 5-1 DMS4 front panel display main Menu

The labels at the bottom of the screen (**Out**, **Albums**, **CD** and **Setup**) correspond to the four action buttons below the LCD display on the front panel. The function of these buttons can change dependent on which screen is displayed on the front panel.

**Note:** The **MENU** button can be used at any time to return to the above screen.

### DISPLAYING PLAYBACK INFORMATION

The front panel user interface has the ability to display basic information about the status of your DMS4 Digital Music Server's output(s).

- Press the left hand action button on the front panel corresponding to the **Out** label on the LCD display

The following screen is displayed:

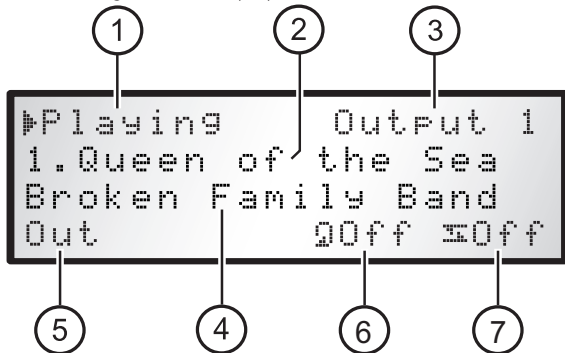


Fig. 5-2 DMS4 front panel showing playback status

- Indicates the current playback status
- Title of the track currently playing
- Name of the audio output currently selected
- The name of the artist associated with the track currently playing
- Press this button to change the audio output currently selected
- Press this button to toggle the **Repeat** function
- Press this button to toggle the **Shuffle** function

### BROWSING ALBUMS IN THE AUDIO LIBRARY

The front panel user interface is also capable of displaying a list of albums present in the **Audio Library** of the DMS4 Digital Music Server.

- Press the front panel action button corresponding to the **Albums** label on the LCD display

The following screen is displayed:

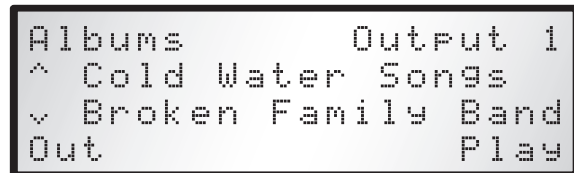


Fig. 5-3 Browsing albums on the DMS4 via the front panel

#### To Select an Album for Playback

- Use the **▲** and **▼** buttons on the front panel to move through the albums list alphabetically until the name of the album you wish to play is displayed. The artist name is also displayed below each album title
- Press the **Out** action button to select the audio output
- Finally, press the **Play** action button

### RECORDING OR PLAYING A CD

The front panel user interface can be used to control the recording of a CD onto the hard disk of your DMS4 Digital Music Server. It can also be used to play a CD directly from the CD tray.

#### To begin recording a CD

- Press the button labelled **OPEN/CLOSE** on the front panel, insert a CD into the CD tray and press the **OPEN/CLOSE** button a second time to close the tray
- Press the front panel action button corresponding to the **CD** label on the LCD display

The following screen displays the album details:

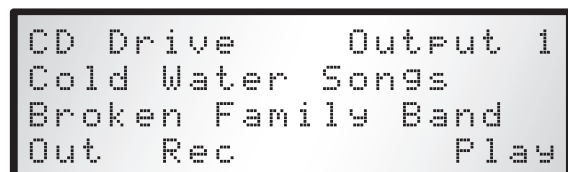


Fig. 5-4 Recording a CD via the DMS4 front panel interface

- Press the **Rec** action button

The recording quality is determined by the **CD Record Settings** in the **Set Up** menu.

- Press the **Rec** action button to begin recording

The LCD display will show the progress of the recording and indicate when the recording process is complete.

#### To play a CD directly from the CD Tray

- Press the button labelled **OPEN/CLOSE** on the front panel, insert a CD into the CD tray and press the **OPEN/CLOSE** button a second time to close the tray
- Press the front panel action button corresponding to the **CD** label on the LCD display
- Press the **Play** action button

## CONFIGURING SETUP OPTIONS

The configuration options available in the **Settings** menu of the television user interface are also available via the front panel user interface.

- Press the front panel action button corresponding to the **Setup** label on the LCD display

The following screen is displayed:

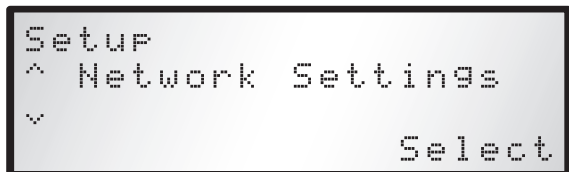


Fig. 5-5 SetUp menu on the DMS4 front panel interface

Use the **▲** and **▼** buttons on the front panel to scroll through the following **Set Up** options:

- Network Settings
- Current Ethernet Settings
- Static Ethernet Settings
- TV Settings
- System Information
- Software Update Settings
- Network Back Up Settings
- CD Record Settings
- Media Transfer Settings
- XiVALink Settings
- Remote Diagnostics
- Online Update

Press the **Select** action button on the front panel to enter any of the above sections and configure settings as you would on the television user interface.

Where you are required to enter text, a screen will appear containing letters, numbers and symbols:

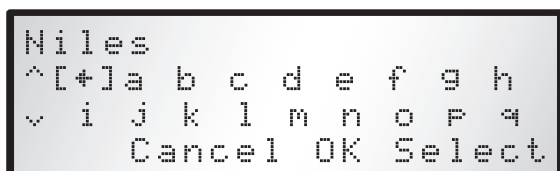


Fig. 5-6 Entering text via the DMS4 front panel interface

- Use the **▲**, **▼**, **<** and **>** buttons on the front panel to scroll down the list selecting characters to enter
- Use the **Select** action key on the front panel to select a character

As you select characters they will appear at the top of the LCD display.

- Press the **Ok** action key when you have finished entering text

## ONLINE UPDATES

The software inside the DMS4 Digital Music Server may be improved by Niles in the future. Therefore, periodically, updates become available online that the unit can download. The process is handled automatically; you do not need to know the location of update(s).

The update process is performed via the front panel display, not via the TV interface or via the IntelliControl® wall-mounted or hand-held devices (unless otherwise stated by the device).

**Note:** To perform an online update your DMS4 Digital Music Server must have an Internet connection present.

Only a few button presses are required to check for, and install, the latest available updates. Please use the following procedure:

- Use the **▲** and **▼** buttons on the front panel to select the **Online Update** option
- Ensuring your Internet connection is present, press the **Select** action button

Follow the front panel display instructions in order to check for and install online updates. When the process is complete, your DMS4 Digital Music Server will automatically restart with the new software installed.

# INTELLICONTROL® ICS WALL-MOUNTED & iREMOTE® INTERFACES

The IntelliControl® ICS DMS4 Digital Music Server can be controlled via the IntelliControl® ICS user interfaces. Refer to Figure 2-2 on page 14 for the system integration and wiring. The IntelliControl® ICS wall-mount and iREMOTE® user interfaces share some common features detailed in Fig. 6-1.

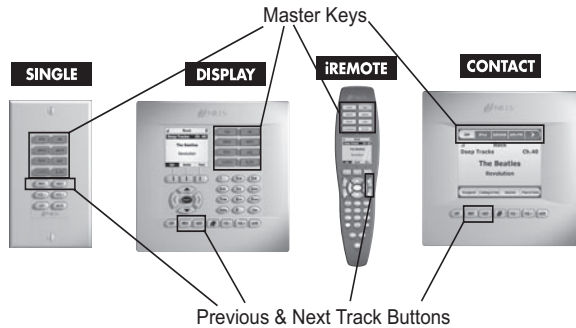


Fig. 6-1 Common Features for all IntelliControl® User Interfaces

## USER INTERFACE DESCRIPTIONS

The Master Keys are labeled for the sources and allow the user to change what is being listened to in that zone. For the examples in this section one of the Master Keys will be labeled DMS4 and allow the user to choose to listen to one of the streams of music coming from the DMS4 Digital Music Server. The PREV & NEXT buttons allow the user to skip to the previous or next song in the play queue of the DMS4. All of the user interface controls have VOLUME UP, VOLUME DOWN and MUTE which allow the user to adjust the volume level of the loud speakers in the room where the control is.

The SINGLE, DISPLAY and CONTACT are wall-mounted keypads. The iREMOTE® is a wireless remote control that can be taken throughout the house to control the IntelliControl® ICS multi-zone system.

NOTE: The CONTACT TT is a CONTACT Keypad in a tabletop caddy. All references to CONTACT include CONTACT TT.

The DISPLAY, CONTACT keypads and iREMOTE® have a visible feedback area, which will provide the user information (metadata) from the IntelliControl® ICS DMS4. This metadata is the artist, album and song title information contained in the music stored on the DMS4 Digital Music Server. This metadata information also allows the user to navigate their way through all of the music stored on the DMS4. The following sections detail how the user should use the metadata on these control interfaces to navigate and control the DMS4 Digital Music Server.



Fig. 6-2a Now Playing screen on user interfaces

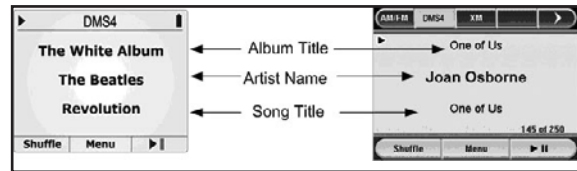


Fig. 6-2b Close-up of the Now Playing screen on user interfaces

The DISPLAY and iREMOTE® interface controls are virtually identical in their functionality. Both interface controls have Menu navigation controls, alphanumeric buttons and soft keys (as shown in Fig. 6-3) that allow the user to "move" through the menu screens for control over the DMS4.

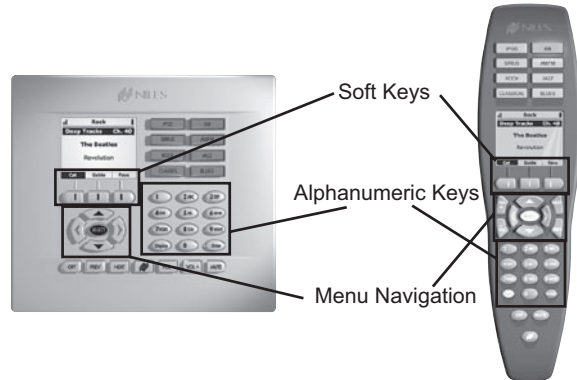


Fig. 6-3 User interface navigation on the DISPLAY and iREMOTE®

The Menu Navigation buttons are the UP, DOWN, LEFT, RIGHT and SELECT, and these buttons are used to cycle through a list of choices in the display area.

The Alphanumeric buttons are laid out like a cell-phone and are used for music search features on the DMS4. The soft keys are buttons just below the LCD screen and change their functionality based on what DMS4 menu the user is on.

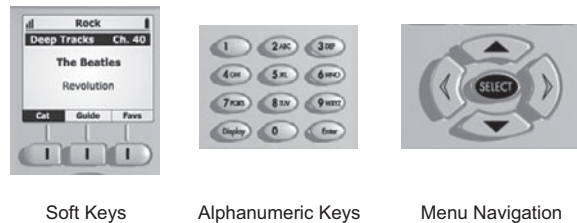


Fig. 6-4 ICS DISPLAY & iREMOTE® interface: close up of control display, alphanumeric and navigation keys

The CONTACT keypad has the same areas of control for the DMS4, however it is a touch screen interface, so instead of pressing hard buttons the user will touch the screen for some of the control features. When the CONTACT keypad shows a list of choices, the user does not have to use an UP or DOWN hard buttons, he just touches the screen of his choice.

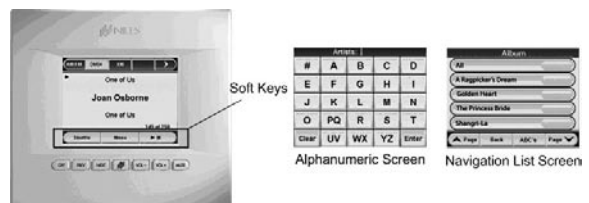


Fig. 6-5 ICS CONTACT soft keys and touch screen interface

## DMS4 AND INTELLICONTROL® ICS USER INTERFACE FUNCTIONALITY

The Master Keys on the IntelliControl® ICS user interface provide "one-touch activation" of the sources on the GXR2 Modular MultiZone Receiver. After a Master Key is pressed and the source starts playing the user is greeted with the Now Playing screen for that source. From this "main screen" the user now has control over the source. With a DMS4 Digital Music Server properly integrated with the GXR2 Modular MultiZone receiver, the user now has at his fingertips the following control;

Advancing the DMS4 to the **Next** or **Previous** song in the play queue

**Pausing** the current song in the queue along with **Play**

Putting the DMS4 into a **Shuffle** mode to play the songs in the queue in random order, entering the **Menu** of the DMS4 where the user can now navigate all of the music on the DMS4

### PLAYING MUSIC FROM THE DMS4 LIBRARY USING THE CONTACT KEYPAD

Pressing the **Menu** button the user can search through and play the music based on tracks, artists, albums, playlists, genres, years and eras.

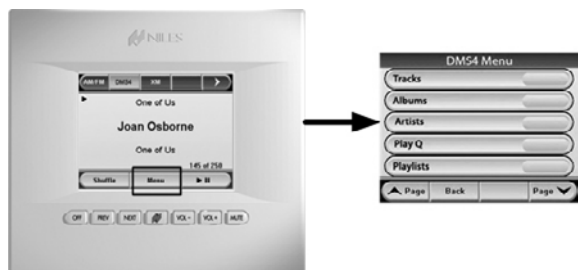


Fig. 6-6 ICS CONTACT interface: accessing the DMS4 music library via the menu

To enter the TRACKS menu just press the TRACKS button. The user is now presented with ALL and the TRACKS from the DMS4 in alphabetical order.

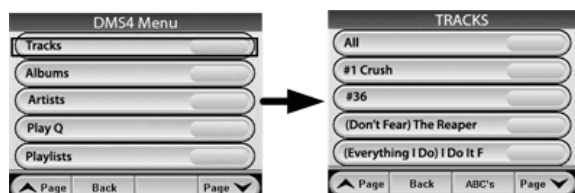


Fig. 6-7 ICS CONTACT interface: accessing the DMS4 tracks menu

If the user wants to play all of the tracks listed he would press and release the ALL button. If music was playing at the time the ALL button was pressed, that music would stop and then music would start playing from the first song of the tracks list (essentially replacing whatever was playing). If the user presses a track listed on the screen, any music that was playing would stop and the chosen track would start playing (essentially replacing whatever was playing).

Press & Hold the All button and all of the listed tracks will be added to the end of the Play Queue of the DMS4. Performing a Press & Hold on any track listed has the same effect of adding that track to the end of the Play Queue.

To enter **ALBUMS** from the main menu just press the ALBUMS button. The user is now presented with ALL and then all of the albums on the DMS4 in alphabetical order. As in the tracks menu if the user presses the ALL button, all of the ALBUMS will now replace whatever was playing in the Play Queue. A Press & Hold of the ALL button will add all of the albums on the DMS4 to the end of the Play Queue.

Press and release any album listed on the screen the user will now be presented with all of the tracks on the chosen album.



Fig. 6-8 ICS CONTACT interface: accessing the DMS4 Albums menu

To enter **ARTISTS** from the main menu just press the ARTISTS button. The user is now presented with ALL and then all of the artists on the DMS4 in alphabetical order. As in the tracks menu if the user presses the ALL button, all of the ARTISTS music will now replace whatever was playing in the Play Queue. A Press & Hold of the ALL button will add all of the albums from all artists on the DMS4 to the end of the Play Queue.

Press and release any artist listed on the screen the user will now be presented with all of the albums for the chosen artists.

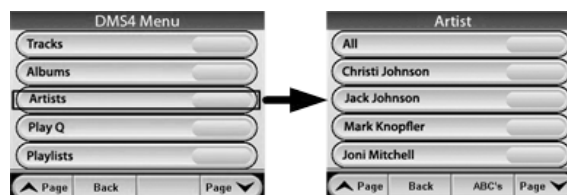


Fig. 6-9 ICS CONTACT interface: accessing the DMS4 Artists menu

To enter the **PLAY Q** from the main menu just press the PLAY Q button. The user is now presented with all the selections (individual tracks, full albums and Playlists) that will play from the current Play Q.



Fig. 6-10 ICS CONTACT interface: accessing the DMS4 PLAY Q screen

To enter **PLAYLISTS** from the main menu just press the PLAYLISTS button. The user is now presented with all of the Playlists on the DMS4 in alphabetical order. Press and release any Playlist listed on the screen the user will now be presented with all of the tracks and albums contained in that Playlist.



Fig. 6-11 ICS CONTACT interface: accessing the DMS4 Playlists menu

To enter **GENRES** from the main menu just press the GENRES button. The user is now presented with ALL and then a list of all of the Genres on the DMS4 in alphabetical order. As in the tracks menu if the user presses the ALL button, all of the music of that Genre will now replace whatever was playing in the Play Queue. A Press & Hold of the ALL button will add all music from all Genres on the DMS4 to the end of the Play Queue.



Press and release any Genres listed on the screen and the user will now be presented with all of the albums for the chosen Genre.

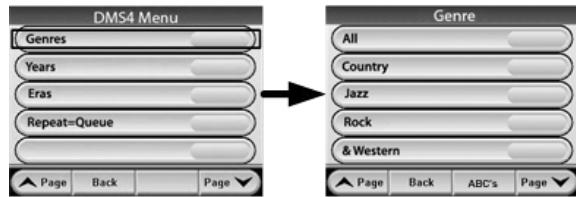


Fig. 6-12 ICS CONTACT interface: accessing the Genres menu

**Years** and **Eras** are listed on the second screen of the Main Menu, to access the second screen press the Page▼ button.

Entering YEARS the user is presented with ALL and a list of years that the albums were originally released in. Eras will present the user with a list of eras that applies to the music on the DMS4. Below is a CONTACT screen sample for both years and eras Menus.



Fig. 6-13 ICS CONTACT interface: the Years and Eras screens

Within the tracks, album, artists, genres, years and eras menus the user can perform an alphanumeric search for a specific music title contained on the DMS4. When available the menu will present the user with an **ABC's** button. After pressing the ABC's button the user sees an alphanumeric screen where he can now enter up to 4 characters to refine his search. The user would press the # button to show the music that starts with non-alphabetic characters.

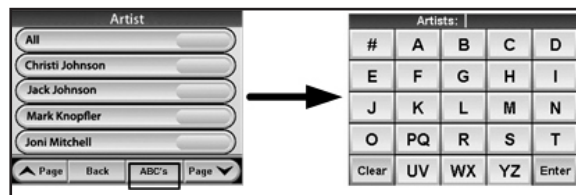


Fig. 6-14 ICS CONTACT interface: accessing the alphanumeric menu

In the above example, if the user wanted to find all of the artists whose first name starts with M, he would press the letter **M** then the **Enter** button. The user interface would then show all artists that start with M.

## PLAYING MUSIC FROM THE DMS4 LIBRARY USING THE IREMOTE® OR DISPLAY USER INTERFACE

The above section detailed how the user would navigate the menus of the DMS4 using the CONTACT keypad. The CONTACT is a touch screen interface where the user just touches his selection on the screen shown. The DISPLAY and IREMOTE® user interfaces have a display area that shows the metadata and instead of pressing selections on the display area the end-user uses the menu navigation, soft keys and alphanumeric hard keys to navigate through the choices in the display area. For example, to navigate the DMS4 to find and start playing music from *Mark Knopfler* the user would press the soft Key under **Menu** in the Now playing screen. The user would then use the UP and DOWN arrows to move the highlight bar up and down on the listed items in the display area.

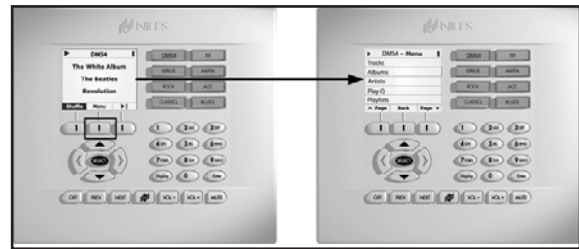


Fig. 6-15 Playing music using the iREMOTE® or DISPLAY user interface

When the user has moved the highlight to the item he wants ARTISTS, the user then presses the SELECT button. Then move the highlight down on the ARTISTS screen to highlight *Mark Knopfler*, press select. The user then moves the highlight down to the album from that artist and presses select. On the TRACKS menu the user can press SELECT to choose all of the songs from that album.

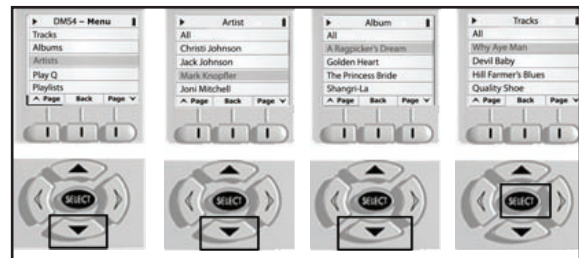


Fig. 6-16 Navigating the Track, Artist and Album menus on the iREMOTE® and DISPLAY user interfaces

Alphanumeric search is also available on the iREMOTE® and DISPLAY keypad. The user can use the alphanumeric hard buttons like a cell phone by using multiple presses of the 5 number the display area will show "J" and each successive press of the 5 button cycles through the letters then the number. (i.e. multiple presses of the 5 button will show the user "J", "K", "L" then "5") When the user has the letter or number he wants, he then presses the right arrow to move over to enter the next letter/number, left arrow to go back 1 character or SELECT to start the search.

# SYSTEM SETTINGS

This chapter describes the advanced settings that you can access from your IntelliControl® ICS DMS4 Digital Music Server's **Settings** menu.

To access the **Settings** menu:

- Press the **Menu** key on your remote control to display the **Main Menu**
- Use the **▲** and **▼** keys to highlight the **Set Up** option.
- Press the **✓Select** key
- Use the **▲** and **▼** keys again to highlight the **Settings** option
- Press the **✓Select** key

The following screen is displayed:



Fig. 7-1 DMS4 TV interface Settings main menu screen

The following sections describe each of the options available from the **Settings** menu.

## CONNECTION SETTINGS

This section allows you to specify how your DMS4 Digital Music Server accesses the Internet.

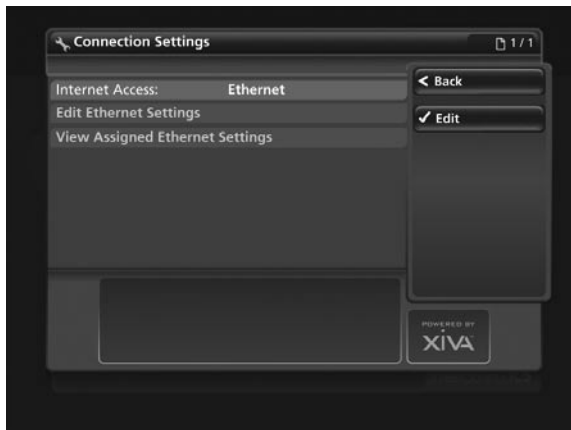


Fig. 7-2 DMS4 TV interface Internet Connection Settings screen

Edit **Internet Access** to choose between **Ethernet** and **None** as the connection type and press the **Save** key to commit any changes you make.

## Edit Ethernet Settings

If you have selected **Ethernet** as your chosen **Internet Access** method, you will need to choose between **DHCP** and **Static** as the Ethernet **Mode**. Select **Edit Ethernet Settings** and specify **DHCP** as the **Mode** if your DMS4 Digital Music Server is connected to a network with a DHCP server present, and the Ethernet settings should be assigned automatically. Alternatively, select **Static** as the **Mode** and a number of extra fields will appear on the **Ethernet Settings** screen:



Fig. 7-3 DMS4 TV interface Ethernet Settings screen

Enter your own Ethernet details in the **IP Address**, **Subnet Mask**, **Gateway** and **DNS** fields. Press the **Save** key to commit any changes you make.

## Assigned Ethernet Settings

Select **View Assigned Ethernet Settings** to see the current configuration of your DMS4 Digital Music Server.

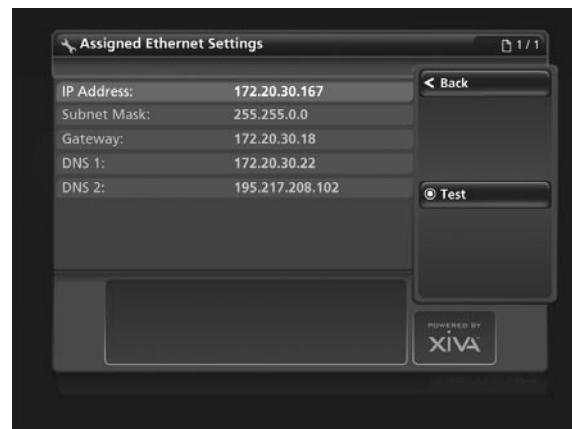


Fig. 7-4 DMS4 TV interface Assigned Ethernet Settings screen

If you are experiencing difficulties connecting via Ethernet, or are prompted to do so by a member of the Niles Technical Support Team, press the **Test** key to perform a series of quick tests that may help diagnose network connectivity problems.

**Note:** After making changes to any of the **Connection Settings** screens, you may be prompted to restart your DMS4 Digital Music Server in order for the new settings to take effect.

## TV SETTINGS

This section is used to specify if your DMS4 Digital Music Server is configured for PAL or NTSC use.



Fig. 7-5 DMS4 TV interface TV Settings screen (PAL/NTSC)

**Note:** your DMS4 Digital Music Server will be set to NTSC by default. You may need to amend this setting if the TV user interface is not displayed, or displayed incorrectly on your television screen.

## USER INTERFACE SETTINGS

The options on this menu allow you to change the settings that affect the way the user interface is displayed.



Fig. 7-6 DMS4 TV interface User Interface Settings screen

By default, your DMS4 Digital Music Server will be in **Passive** mode; changing to **Active** will add icons to the interface depicting the available options on each screen.

This screen also allows you to enable or disable the hints that appear at the bottom of some of the screens and the button pulse when an option is selected.

In addition, you can also enable or disable **Auto Output**. This option dictates whether a remote control specifically programmed to control a particular audio output will automatically switch the DMS4 Digital Music Server to control the assigned output when a button is pressed on the remote control. For more information about using this feature, see the section entitled **Remote Control Use in a Multi-room System** on page 12.

### The Screensaver

The DMS4 Digital Music Server is equipped with a screensaver which will activate when the unit remains idle for a specified period of time. On this screen, you may choose to disable the screen saver or alter the time delay before it activates.

**Note:** It is strongly recommended that you leave the screensaver

enabled if you are using a plasma or rear projection television to display the user interface.

## SYSTEM INFORMATION

The **System Information** screen displays information about the configuration of your DMS4 Digital Music Server, such as the serial number and the version number of the software currently running.

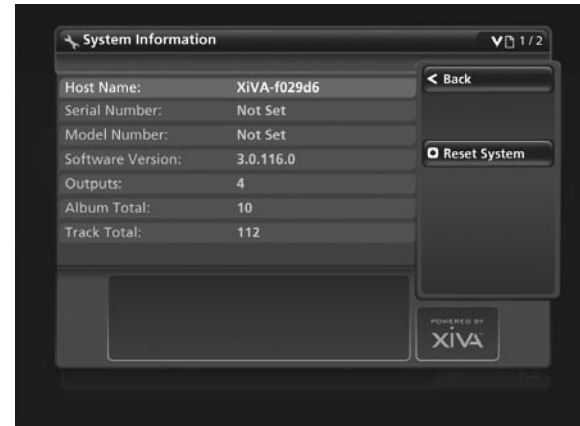


Fig. 7-7 DMS4 TV interface System Information screen

You may need to quote this information if you contact your dealer or installer for technical support.

On this screen there is also a **Reset System** option available by pressing the **⏏** key on the remote control. Select this option and press the **✓ Reset Defaults** key to return your DMS4 Digital Music Server to its default factory settings. You can also choose the **⏏ Clear Content** option to remove all the music from your **Audio Library**.

If you choose to clear all the content from your **Audio Library** you will be asked to enter a password to confirm your action. The password is *ResetMyMusic*.

**Note:** If you perform either of the above two actions, you will not be able to reverse their effects.

## SOFTWARE UPDATE SETTINGS

In the unlikely event that a software update attempt fails, you may need to amend these settings. If this scenario arises, contact your dealer or installer for more information.



Fig. 7-8 DMS4 TV interface Software Update Settings screen

## NETWORK BACK UP SETTINGS

This screen allows you to specify **Username**, **Password** and **Network Location** for performing a Back Up operation.



Fig. 7-9 DMS4 TV interface Network Back-up Settings screen

For more information about the use of these settings, refer to the section titled **Network Back Up And Restore**, on page 40.

## CD RECORD SETTINGS

On this screen you have the option to change the way in which your DMS4 Digital Music Server records CDs.



Fig. 7-10 DMS4 TV interface CD Record Settings screen

Selecting **Maximum** as the **Drive Speed** will record your CDs at high speed. If you find this setting makes your DMS4 Digital Music Server too noisy, select **Standard** for quieter but slower operation.

Choose between **Uncompressed WAV**, **Very High Quality MP3 (320k CBR)**, **High Quality MP3 (192k VBR)**, **Standard Quality MP3 (128k VBR)**, **High Quality WMA (128k CBR)** and **Standard Quality WMA (96k CBR)** as the **Default Recording Quality** used by both the TV and front panel user interfaces when recording a CD.

The **Quick Record** option allows you to specify if your DMS4 Digital Music Server displays the **Recording Quality** options each time a CD is recorded. By default this option is **enabled**. If you prefer to select the record quality each time you record a CD, change it to **disabled**.

With the **Auto Record** feature enabled, each time you insert a CD into the CD drive it will begin recording automatically. In addition, enable the **Auto Record Eject** function to have the CD automatically ejected when it has finished recording.

## MEDIA TRANSFER SETTINGS

Here you can enable or disable the media transfer function.

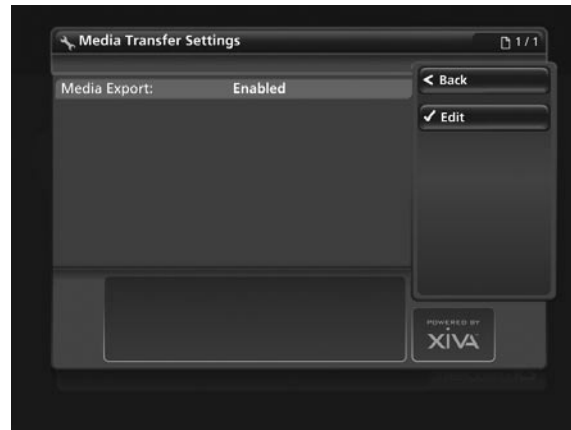


Fig. 7-11 DMS4 TV interface Media Transfer Settings screen

This option is enabled by default.

## OUTPUT CONFIGURATION

This screen allows you to enable volume control on each of the available audio outputs.

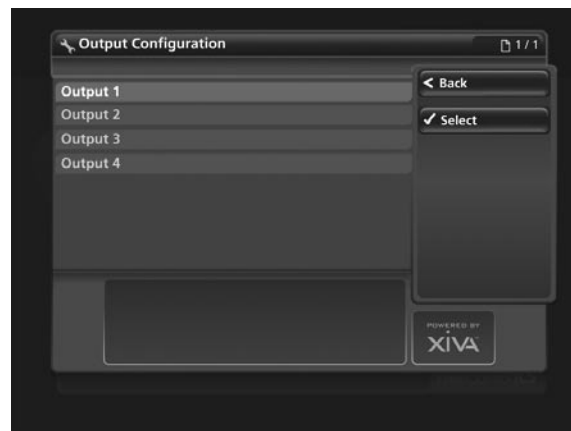


Fig. 7-12 DMS4 TV interface Output Configuration screen

For details about how to enable volume control, see the section titled **Volume Control** on page 12.

## XIVALINK SETTINGS

Your DMS4 Digital Music Server uses a protocol called XiVALink to communicate with compatible devices and controllers.

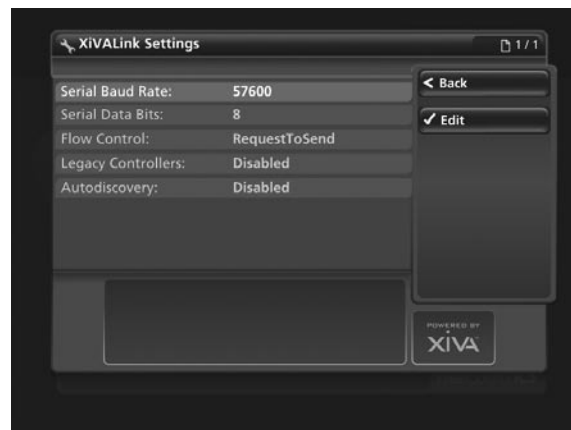


Fig. 7-13 DMS4 TV interface XiVALink Settings screen

It is recommended that you do not attempt to edit these settings unless you are instructed to do so by your installer, or a member of the Niles Technical Support Team.

# USING YOUR DMS4 DIGITAL MUSIC SERVER WITH A HOME COMPUTER

Your IntelliControl® ICS DMS4 Digital Music Server has a number of advanced features which can be accessed via a computer connected to your home network.

## THE REMOTE USER INTERFACE

Your DMS4 Digital Music Server's television user interface is accessible via a PC running on your home network. This gives you complete control of your DMS4 Digital Music Server using a keyboard and mouse as opposed to a remote control. This can help make editing items in the **Audio Library** easier and quicker and also allows you to control your DMS4 Digital Music Server from any computer running on your home network.

### Accessing the Remote User Interface

- Connect your DMS4 Digital Music Server to your home network and power it on. If no DHCP address is available, your DMS4 Digital Music Server will automatically assign itself an IP address and become accessible on the network
- Navigate to the **Current Ethernet Settings** screen in the front panel **Set Up** menu on the DMS4 Digital Music Server and note the IP address. If you are using DHCP this address will be in the same range as the other computers on your network; if not, this address will be in the range 169.254.0.1 - 169.254.255.254
- Next, using a computer on the network, type the IP address or host name of your DMS4 Digital Music Server into the address bar of a web browser (e.g. <http://192.168.0.1> or <http://<hostname>>). If you are not using DHCP you may need to reconfigure your computer's network settings before you can access the Remote User Interface

If you experience any difficulties with the above configuration, contact your network administrator.

### Supported Software

Currently, the operating systems and web browsers supported are as follows:

#### On the Apple Macintosh:

- Mac OS X 10.4.2 and above
- Safari 2.0.1 and above

#### On the PC:

- Microsoft® Windows® XP (Service Pack 2) and Windows Vista™
- Microsoft® Internet Explorer 6.0.2 and above

**Note:** Other operating systems and web browsers, or earlier versions of the above, may not display the Remote User Interface correctly.

### Navigating the Remote User Interface

You will notice that the Remote User Interface is identical to the television user interface, but for the addition of some buttons. These buttons have been added to allow you to perform actions normally executed with the DMS4 Digital Music Server remote control, using a standard computer mouse.

When you first connect to the Remote User Interface, you will recognize the **Main Menu** screen:

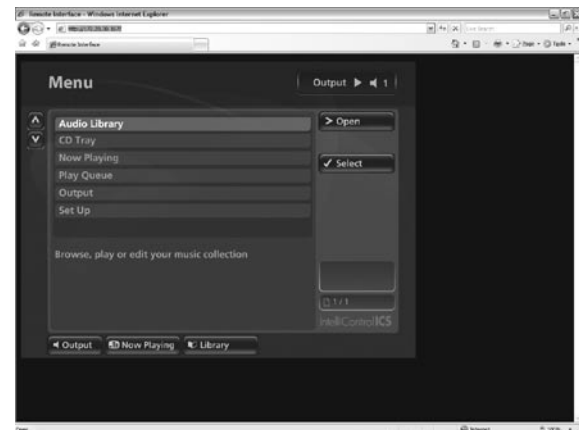


Fig. 8-1 DMS4 Remote User Interface Main Menu screen

The screens of the Remote User Interface are identical to those of the television user interface but for the following differences:

- The **▲** and **▼** buttons now appear wherever there is a list that can be scrolled. You can use your mouse to press these buttons when you would usually use the **▲** and **▼** buttons on the DMS4 Digital Music Server remote control
- The functions of the main action keys on your DMS4 Digital Music Server remote control, such as **Menu**, **Options**, **Library** and **Now Playing** have been replaced by buttons on the screen
- When required to edit or enter text, the Remote User Interface will display the text entry screen just as the television user interface does. However, instead of using the alphanumeric keypad on your DMS4 Digital Music Server remote control, you can use your computer keyboard to enter text

You will also notice that playback transport controls are available on the left hand side of the **Now Playing** screen:



Fig. 8-2 DMS4 Remote User Interface Now Playing screen

You can initiate and control playback from the Remote User Interface using these controls.

**Note:** If you make any changes to the **Connection Settings** via the Remote User Interface, such as changing the IP Address, you may need to reconnect using the new connection details.

## MEDIA TRANSFER

In addition to recording directly from the CD tray, it is also possible to transfer music and cover art images to and from your DMS4 Digital Music Server, using a computer on your home network. This feature allows you to transfer music files from your DMS4 Digital Music Server to a portable device (for example, an Apple® iPod®) to allow you to listen to your music collection while you are away from home.

**Note:** In some countries the copying of material protected by copyright law may require permission of the copyright owners.

### Accessing Media Transfer

The illustration below shows a typical home network set up. Connect your DMS4 Digital Music Server to your home network as described in the section entitled **Accessing the Remote User Interface** on the previous page.

#### Enabling Media Transfer

- Press the **Menu** key on your DMS4 Digital Music Server remote control to display the **Main Menu**.
- Use the **▲** and **▼** keys to highlight **Set Up** and press the **✓ Select** key.
- Use the **▲** and **▼** keys again and choose the **Settings** option and then highlight **Media Transfer Settings** and press the **✓ Select** key.

The following screen is displayed:



Fig. 8-3 DMS4 Remote User Interface Media Transfer settings screen

This setting should be set to **Enabled** by default. However, if necessary, press the **✓ Edit** key and select **Enabled** to activate media transfer. Use the **Save** key to save this setting.

Provided that your DMS4 Digital Music Server is connected correctly it should now be accessible by browsing the network from your computer. Alternatively, open Windows® Explorer and type the IP address of your DMS4 Digital Music Server into the Address bar (e.g. \\<IP ADDRESS>). When you attempt to access your DMS4 Digital Music Server on your home network, you will be asked to enter a username and password. These are as follows:

- Username - *niles*
- Password - *niles*

**Note:** The above username and password are case sensitive.

If you are using a Macintosh computer you can create a new network connection as follows:

- Select **Go** from the **Finder** menu and click **Connect to Server**.
- Click on the **Browse** button in the **Connect to Server** window.
- Navigate to your DMS4 Digital Music Server on the network and double-click the appropriate icon.
- If your DMS4 Digital Music Server does not appear in the browse window return to the **Connect to Server** window and enter: `smb://<WORKGROUP><DMS4 Digital Music Server_NAME>` (e.g. `smb://MSHOME;DMS4 Digital Music Server`) into the **Server Address** box, then click the **Connect** button.

**Note:** Both the Workgroup and DMS4 Digital Music Server Name should be in upper case.

- In the **SMB Mount** window click the **OK** button.
- In the **SMB/CIFS Filesystem Authentication** window enter the username `<username>` and the password `<password>` and then click the **OK** button.

A window showing the contents of the DMS4 Digital Music Server hard disk will be displayed.

At the top level of the media transfer directory structure are two folders entitled **MusicShare** and **Import**.

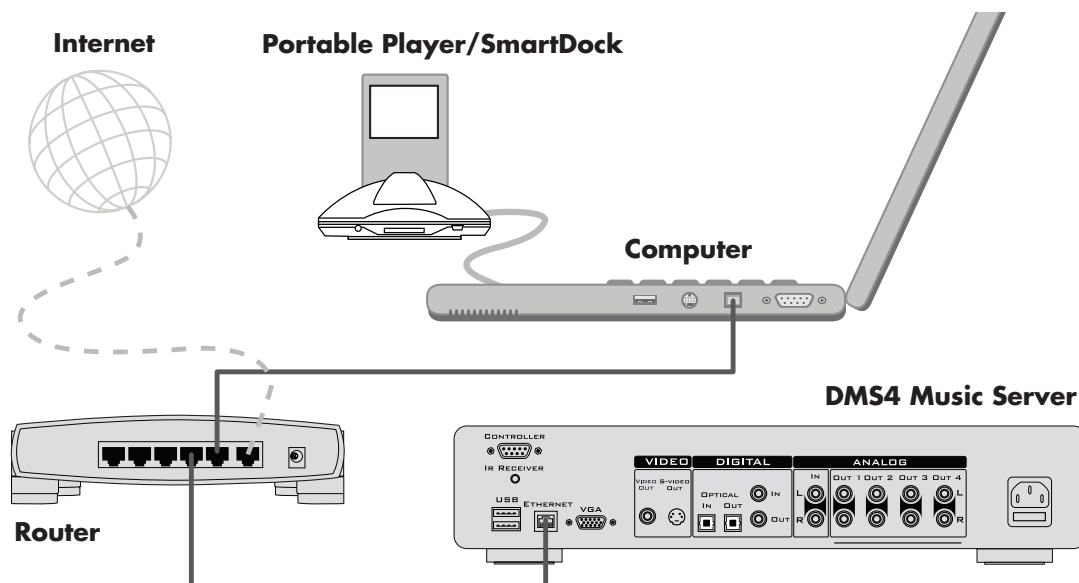


Fig. 8-4 Connecting the DMS4 to a home computer, the Internet and a portable media player via a router in a home network

### Importing Files to your DMS4 Digital Music Server

- Double click on the folder entitled **Import**. An empty folder window will be displayed

#### To Import Music Files

- Navigate to the location of the music files on your computer
- Use your mouse to select the files you wish to import and drag them into the **Import** window

The files will appear briefly in the **Import** window but after a few seconds will disappear. These files should now be accessible in the **Audio Library** of your DMS4 Digital Music Server.

**Note:** The currently supported audio file types for import are **WAV**, **WMA** and **MP3** (WMA lossless and DRM protected files are not supported). Any files of an unsupported type that are dropped into the **Import** folder will not be imported.

#### To Import Cover Art Files

- Navigate to the location of the cover art files on your computer
- Use your mouse to select the files you wish to import and drag them into the **Import** window

The files will appear briefly in the **Import** window but after a few seconds will disappear. These files will now be available when selecting cover art for an album in the **Audio Library**.

**Note:** The currently supported image file types are **BMP** and **JPEG**. Files will be resized automatically. Any files of an unsupported type that are dropped into the **Import** folder will not be imported.

### Exporting Files from your DMS4 Digital Music Server

- Double click on the folder entitled **MusicShare**. A folder window will be displayed containing a folder for each artist present in the **Audio Library** of your DMS4 Digital Music Server
- Double click on the folder for an artist. A folder window will be displayed containing a folder for each album by the chosen artist present in the **Audio Library**
- Double click on the folder for an album. A folder window will be displayed containing all the tracks within the album and a JPEG file containing the cover art for the album

You now have read only access to these files and can drag and drop them to a location on your PC. You are now also able to copy music from your DMS4 Digital Music Server directly to your portable player.

### Transferring Music to your Portable Player using iTunes®

The iTunes® Media Player application is specifically designed to simplify the process of synchronizing your music collection with an iPod portable player. Support for other devices is limited; you should check that your portable player is compatible before using this application. iTunes® version 4.6 or later is required.

The **Library** source in iTunes® shows all media files stored on the local hard disk as well as media which has been added from other network drives. You can add the music collection from your DMS4 Digital Music Server to the **Library** as follows:

- Select the **Preferences** option. This can be found under the **Edit** menu on the Windows® edition of iTunes® and under the **iTunes®** menu on the Macintosh version
- Select the **Advanced** tab
- Ensure that the option labelled **Copy files to iTunes® Music folder when adding to library** is unchecked
- Click the **OK** button to confirm any changes

- Making sure you have **Library** displayed in iTunes®, navigate to your DMS4 Digital Music Server on the network
- Select the music you wish to transfer; you can transfer entire albums, or all the music by a particular artist, by dragging the relevant folder into the iTunes® **Library** and releasing the mouse button. To transfer the entire contents of your **Audio Library**, drag the folder entitled **Albums By Artist** into the iTunes® **Library**

**Note:** the import process may take some time depending on the number of albums and the speed of your computer.

Once the iTunes® **Library** source has been updated with the music from your DMS4 Digital Music Server you can update your iPod as follows:

- Connect your iPod in the normal way
- Click the **Browse** button in the top right-hand corner of the iTunes® window
- Drag any item from the **Genre**, **Artist**, **Album** lists onto the iPod icon in the **Source** area

The transfer process will begin shortly afterwards.

### Updating the iTunes® Library

If you have removed music from your DMS4 Digital Music Server or edited the names of any items in the library you will need to update the iTunes® **Library** to remove any broken links. To do this, you should first delete all the DMS4 Digital Music Server albums from the iTunes® **Library** as follows:

- Select the **View Options** item from the **Edit** menu
- Check the **Grouping** option, then click the **OK** button to confirm your changes
- In the iTunes® **Library** click the new **Grouping** column heading. The tracks located on your DMS4 Digital Music Server hard disk will be grouped together using the label `<-DMS4 Digital Music Server_NAME` (e.g. `<-NilesDMS4-1234`)
- Click on the first track in the list with this grouping label then, holding down the **Shift** key, click the last track
- Press the **Delete** key to remove these tracks from the iTunes® **Library**
- Click **Yes** to confirm your choice

Repeat the import process described above to add back the DMS4 Digital Music Server information.

**Note:** iTunes® does not support WMA files.

### Transferring Music to your Portable Player using Windows® Media Player

It is also possible to use Windows® Media Player to transfer music from your IntelliControl® ICS DMS4 Digital Music Server to your portable device.

- Firstly, make sure you can navigate to your DMS4 Digital Music Server and view the music in your **MusicShare** folder
- Display the **File** drop down menu and select **Add to Library**, followed by **Add Folder**. In the Explorer window that appears navigate to your DMS4 Digital Music Server on the network and select the music you wish to transfer; you can transfer entire albums, or all the music by a particular artist by selecting the relevant folder and clicking **OK**. To transfer the entire contents of your **Audio Library**, select the folder entitled **MusicShare**

**Note:** the import process may take some time depending on the number of albums and the speed of your computer.

Once your **Media Library** has been updated with the music from your DMS4 Digital Music Server you can update your portable player as follows:

- Click the **Copy to CD or Device** option from the Media Player toolbar.
- Select the **Album, Artist, Genre** or **Playlist** you wish to copy from the **Items to Copy** list.
- Under **Items on Device** select your portable player.
- Click the **Copy** button.

The transfer process will begin shortly afterwards.

## NETWORK BACK UP AND RESTORE

In the unlikely even that your DMS4 Digital Music Server develops a fault you have the option to back up the contents of your DMS4 Digital Music Server's hard disk to a selected location on your home network and then restore this information at a later date.

In order to use **Network Back Up and Restore**, it is first necessary to configure the appropriate settings on your DMS4 Digital Music Server.

- Press the **Menu** key on your DMS4 Digital Music Server remote control to display the **Main Menu**.
- Use the **▲** and **▼** keys to highlight **Set Up** and press the **Select** key.
- Use the **▲** and **▼** keys again to choose **Settings** and press the **Select** key.
- Use the **▲** and **▼** keys a third time to highlight **Network Back Up Settings** and press the **Select** key.

The following screen is displayed:



Fig. 8-5 DMS4 Remote User Interface Network Back-Up and Restore screen

In the **Remote Location** field, enter the location on the network to which you wish to back up your **Library** (e.g. `\\192.168.0.1\Share`). Enter **Username, Password** and **Domain** where appropriate to access your home network.

The **Replace Back Up** option can be set to **True** to overwrite any existing back up information in the specified location.

### Network Back Up

- Press the **Menu** key on your DMS4 Digital Music Server remote control to display the **Main Menu**.
- Use the **▲** and **▼** keys to highlight **Settings** and press the **Select** key.
- Use the **▲** and **▼** keys again to highlight **Network Back Up and Restore** and press the **Select** key.

The following screen is displayed:



Fig. 8-6 DMS4 Remote User Interface Network Back-Up screen

- Press the **Back Up** key.

### Network Restore

Prior to performing a **Network Restore**, it is necessary to clear all of the content from your **Audio Library**, using the **Clear Content** function.

- Navigate to the **Settings** menu and use the **▲** and **▼** keys to choose **System Information**.
- Press the **Reset System** key.
- Press the **Clear Content** key and confirm your intention by pressing the **Yes** key.
- Enter the case sensitive password `ResetMyMusic` and press the **Yes** key.

Your DMS4 Digital Music Server will now automatically shut down and restart, erasing the contents of your **Audio Library** in the process. You are now in a position to perform a **Network Restore**.

- Press the **Menu** key on your DMS4 Digital Music Server remote control to display the **Main Menu**.
- Use the **▲** and **▼** keys to highlight **Settings** and press the **Select** key.
- Use the **▲** and **▼** keys again to highlight **Network Back Up and Restore** and press the **Select** key.
- Press the **Restore** key.
- Confirm that you wish to delete all of the existing music in your **Audio Library** by pressing the **Yes** key and entering the password `ResetMyMusic`.

**Note:** When performing a back up, ensure there is enough space available at the destination for the quantity of media being transferred. In the event that there is not enough hard disk space, the back up will not complete successfully and the partially backed up files will be unusable.



## APPENDIX A

## HDD AUDIO

RC5 Control	000
Output 1	001
Output 2	002
Output 3	003
Output 4	004

## TV

ADMIRAL	157, 146, 010, 125
ADYSON	111
AIWA	059
AKAI	001, 002, 003, 004, 005, 006, 007, 008, 151, 016, 009, 010, 011, 012, 013, 014, 015
AKURA	001, 002, 003, 004, 005, 006, 007, 008, 086, 018, 009, 010, 017, 013, 014, 015, 016
ALBA	017, 151
ALBIRAL	033
AMSTRAD	098, 105, 010, 047
ANITECH	001, 002, 003, 004, 005, 006, 007, 111, 008, 009, 013, 014, 015, 016
ARC EN CIEL	135, 139, 042
ARISTONA	031, 007, 146, 109, 154, 099
ARTHUR MARTIN	021, 118, 010, 120, 161, 011, 012, 121
ASA	157, 149, 146, 020, 022, 023, 095, 125, 132
ASORA	018
ATLANTIC	031, 041, 109, 119
AUCHAN	010
AUDIOSONIC	008, 086
AUSIND	021
AUTOVOX	031, 041, 020, 109, 074, 147, 022, 012
BAIRD	061, 036
BEKO	060, 001, 002, 003, 004, 005, 006, 007, 009, 013, 068, 014, 015, 016, 086
BESTAR	010, 086
BLAUPUNKT	085, 138, 143, 141, 087, 090, 091, 142, 119, 096
BOSCH	143
BRANDT	135, 107, 139, 042
BRANDT ELECTRONIQUE	107, 042
BRION VEGA	146, 147, 029, 148
BROTHER	008
BRUNS	108, 146
BSR	010, 158
BUSH	055, 010, 026, 158
CENTURY	146, 048, 097
CGE	138, 024, 010, 048, 158, 097, 077
CIE	098, 001, 002, 003, 004, 005, 006, 007, 009, 013, 014, 015, 016, 079

CIHAN	009
CLARIVOX	108, 033, 047
CLATRNIC	017
CLATRONIC	001, 002, 003, 004, 005, 006, 007, 008, 009, 119, 013, 014, 015, 016, 158, 097, 018, 151
CONDOR	001, 002, 003, 004, 005, 006, 007, 031, 009, 119, 013, 014, 015, 016, 097, 018
CONIC	111
CONTEC	055, 102, 018
CONTINENTAL EDISON	135, 107, 139, 042
COSMOS	001, 002, 003, 004, 005, 006, 007, 009, 013, 014, 015, 016
CROSLEY	138, 146, 024, 081, 010
CROWN	001, 002, 003, 004, 005, 006, 007, 009, 013, 014, 015, 016, 039, 158, 097, 018, 086
CSESECTRONICS	017
DAEWOO	001, 002, 003, 004, 005, 006, 007, 009, 013, 014, 104, 015, 016, 133, 079
DANSAI	111, 008
DECCA	001, 002, 003, 004, 107, 005, 031, 006, 007, 043, 046, 009, 032, 057, 013, 014, 015, 016
DEGRAAF	063, 010
DIXI	007, 018
DYNATRON	007
DUAL	031, 092, 012
DUAL-TEC	089, 031, 158
DUMONT	146, 022, 025
ELBE	010, 033, 158, 159, 077, 160
ELBIT	001, 002, 003, 004, 005, 006, 007, 009, 013, 014, 015, 016
ELCIT	146, 081, 158
ELECTROVENDA	001, 002, 003, 004, 005, 006, 007, 009, 013, 014, 015, 016
ELEKTA	008
ELEKTRONIKA	001, 002, 003, 004, 005, 006, 007, 009, 013, 014, 015, 016, 097
ELIN	001, 002, 003, 004, 005, 006, 007, 009, 013, 014, 015, 016
ELITE	143, 119, 017
ELMAN	158
ELTA	008, 010, 018
EMERSON	098, 001, 002, 003, 004, 005, 006, 007, 146, 009, 013, 014, 015, 016
ERRES	007, 154
ESC	001, 002, 003, 004, 005, 006, 007, 009, 013, 014, 015, 016
ETRON	010
EUROPHON	031, 158
EXPERT(F)	010
FENNER	018
FERGUSON	035, 106, 107, 136, 022, 044, 033
FIDELITY	031
FINLANDIA	061, 106, 132

FINLUX	157, 149, 021, 020, 022, 023, 043, 081, 010, 095, 032, 025, 026, 048, 158, 132	IMPERIAL	001, 002, 003, 004, 034, 138, 143, 005, 006, 007, 146, 008, 024, 081, 009, 154, 119, 010, 013, 014, 015, 016, 121, 048, 158, 125, 097, 018, 077, 086, 114
FIRST LINE	158	INGELEN	153, 073, 081, 011, 012, 121, 123, 124, 125
FISHER	055, 108, 146, 028, 081, 012, 058, 097, 127, 086	INNO HIT	004, 031, 111, 027, 018
FORMENTI	001, 002, 003, 004, 005, 031, 006, 007, 021, 081, 009, 119, 013, 014, 015, 016	INTERFUNK	005, 007, 146, 042, 073, 081, 154, 012, 121, 123, 040
FRABA	058, 002, 003, 004, 005, 006, 007, 009, 013, 014, 015, 016	IRRADIO	111, 021, 027, 018, 116
FRONTECH	111, 008, 010, 018	ITC	158
FUJITSU	165	ITS	008, 017, 018, 309, 151
FUJITSU GENERAL	088, 109, 010	ITT	153, 073, 117, 081, 011, 012, 121, 123, 124, 125, 126, 036, 079
FUNAI	008	JET POINT	152, 084
GALAXIS	001, 002, 003, 004, 005, 006, 007, 009, 013, 014, 015, 016, 097	JVC	055, 163, 164, 151
GALAXY	097	KAIDO	010
GALERIA	018	KAISUI	017, 156
GBC	081, 010, 158, 018	KAPSCH	109, 081, 010, 121, 125
GENAT CASIONO	010	KARCHER	001, 002, 003, 004, 005, 006, 007, 009, 013, 014, 015, 016, 097
GEC	031, 043, 081, 125, 072	KAWA	151
GELOSO	081, 017, 158, 125, 018	KENDO	010
GENERAL	018	KENNEDY	088, 089, 109, 092, 081, 125, 077
GENERAL TECHNIC	018	KINDO	010
GENEXXA	017	KNEISSEL	001, 002, 003, 004, 005, 006, 007, 009, 013, 014, 016
GOLDHAND	018	KOERTING	085, 146, 086
GOLDSTAR	001, 002, 003, 004, 005, 031, 006, 007, 111, 008, 009, 010, 013, 014, 015, 016, 027, 158, 018, 084, 116	KONKA	151
GOODMANS	001, 002, 003, 004, 055, 005, 006, 007, 043, 009, 013, 014, 015, 016, 027, 079, 018, 151	KORTING	146, 119
GORENJE	097, 086	KRIESLER	031, 007, 146, 109, 154, 099
GPM	008, 017	KJUBA	081
GRAETZ	153, 073, 081, 011, 012, 121, 123, 124, 125	KJUBA ELECTRONIC	012
GRANADA	001, 002, 003, 004, 106, 055, 005, 031, 006, 007, 073, 043, 009, 154, 010, 032, 013, 014, 015, 016, 125	LENCO	001, 002, 003, 004, 005, 006, 007, 008, 009, 013, 014, 015, 016, 079
GRANDIN	010	LENOIR	031
GREAT WALL	156	LIESENKOETTER	001, 002, 003, 004, 143, 005, 006, 007, 009, 013, 014, 015, 016
GRUNDIG	085, 087, 091, 022, 073, 093, 094, 096, 076, 113, 130	LIFETEC	001, 002, 003, 004, 005, 006, 007, 008, 009, 017, 013, 014, 015, 016, 079
HANSEATIC	055, 004, 031, 007, 081, 118, 119	LOEWE OPTA	001, 005, 006, 007, 146, 014
HCM	001, 002, 003, 004, 005, 006, 007, 008, 009, 013, 014, 015, 016, 018	LOGIK	057
HIFI VOX	112, 135, 107, 139, 042, 059	LOEWE	001, 002, 003, 004, 005, 006, 007, 146, 009, 032, 013, 014, 015, 016
HINARI	098, 055, 111, 008, 017, 018	LUMA	007, 109, 010, 161, 125
HIT	146	LUXOR	146, 073, 118, 010, 120, 161, 011, 012, 123, 126, 036, 049, 132, 114, 116
HITACHI	062, 055, 157, 063, 031, 111, 042, 065, 081, 118, 010, 066, 120, 158, 125, 070, 040, 072	MAGNADYNE	146, 081, 158
HYPER	031, 151	MAGNAFON	031, 021
ICE	001, 002, 003, 004, 005, 006, 007, 008, 009, 017, 013, 014, 015, 016, 018, 151	MAGNASONIC	001, 002, 003, 004, 005, 006, 007, 009, 013, 014, 015, 016
		MARANTZ	001, 002, 003, 004, 103, 104, 005, 031, 006, 007, 146, 109, 009, 154, 013, 014, 015, 016, 099, 072, 155, 129

MARSHAL	017	OTTO VERSAND	153, 166, 053, 001, 002, 003, 004, 054, 035, 106, 055, 085, 063, 056, 137, 005, 006, 087, 091, 007, 145, 081, 118, 009, 119, 010, 096, 012, 013, 014, 015, 016, 158, 018, 086, 151, 318
MATSUI	098, 031, 043, 010, 057, 125, 018, 130	P. TACTRON	009
McMICHAEL	072	PAEL	031, 021
MEDION	001, 002, 003, 004, 005, 006, 007, 009, 013, 014, 015, 016	PANASONIC	080, 137, 144, 150, 145, 081, 082, 083, 207, 131
MEMOREX	008, 018	PATHE CINEMA	031, 119, 033, 158
METZ	085, 036, 087, 091, 146, 096, 131	PATHE MARCONI	135, 139, 042
MINERVA	085, 087, 022, 073, 096	PERDIO	043
MITSUBISHI	001, 002, 003, 005, 055, 020, 004, 006, 087, 007, 146, 045, 009, 057, 013, 014, 015, 016	PHILCO	001, 002, 003, 004, 080, 138, 005, 006, 146, 024, 081, 009, 010, 013, 014, 015, 016, 048, 158, 097, 077
MIVAR	031, 030, 075, 032, 006	PHILIPS	001, 002, 003, 004, 103, 104, 005, 031, 006, 091, 007, 146, 042, 109, 009, 154, 013, 014, 015, 016, 099, 072, 155, 129, 115
MTC	005, 081, 086	PHILIPS(F)	001, 002, 003, 004, 005, 006, 007, 009, 154, 013, 014, 015, 016
MULTITECH	031, 010, 097, 018	PHOENIX	031, 021, 081, 119
MURPHY	125	PHONOLA	031, 007, 146, 109, 154, 099
NAONIS	088, 089, 109, 010, 125	PIONEER	007, 042
NATIONAL	080, 137, 144, 150, 145, 081, 082, 083	PRANDONI-PRINCE	021, 010, 125
NEC	055, 020, 156	PRIMA	111
NECKERMANN	060, 166, 053, 001, 002, 003, 004, 085, 143, 056, 005, 031, 006, 091, 007, 146, 081, 118, 009, 119, 010, 096, 161, 013, 068, 014, 015, 016, 097	PRINCE	021, 125
NEI	001, 002, 003, 004, 005, 006, 007, 009, 017, 047, 013, 014, 015, 016	PROFEX	010, 018
NIKKAI	111, 043, 017	PROTECH	007, 008
NISSAN	084	PYE	031, 007, 146, 109, 154, 099
NOBLEX	127, 128	QUASAR	021, 027
NOBUKO	031, 021, 022	QUELLE	098, 153, 166, 053, 001, 002, 003, 004, 054, 106, 055, 085, 157, 138, 143, 056, 137, 088, 140, 141, 005
NOGAMATIC	135, 139, 042	QUESTAR	001, 002, 003, 004, 005, 006, 007, 009, 154, 013, 014, 015, 016
NOKIA	153, 001, 002, 003, 004, 005, 006, 007, 149, 008, 073, 117, 081, 118, 009, 010, 120, 011, 012, 013, 014, 015, 016, 121, 123, 124, 125, 126, 036, 079, 132, 084, 114	RADIOLA	031, 007, 146, 109, 154, 099
NORDMENDE	034, 035, 106, 112, 135, 139, 037, 042, 147, 040	RADIOMARELLI	146, 081, 045, 158
NORMN	001, 002, 003, 004, 005, 006, 007, 009, 013, 014, 015, 016	RADIOTONE	001, 002, 003, 004, 005, 006, 007, 008, 009, 013, 014, 015, 016, 018, 086
NOVA	095	RANK	026
OCEANIC	081, 118, 010, 012, 036	RANK/BUSH/MURPHY	078
OKANO	001, 002, 003, 004, 005, 006, 007, 009, 013, 014, 015, 016, 097	RBM	026
ONCEAS	031	REDIFUSION	045, 012, 125
ONWA	008, 017, 151	REVOX	005
ORAVA	001, 002, 003, 004, 005, 006, 007, 009, 013, 014, 015, 016	REX	088, 089, 109, 092, 010, 125
ORBITER	086	ROADSTAR	001, 002, 003, 004, 005, 006, 007, 009, 013, 014, 015, 016
ORION	098, 001, 002, 003, 004, 005, 036, 006, 007, 111, 008, 009, 010, 017, 012, 013, 014, 015, 016, 018	ROBOTRON	108, 146
OSAKI	043	ROSITA	018
OSIO	027	RTF	108, 146, 010, 017, 086
OSUME	102	SABA	034, 035, 106, 112, 135, 107, 139, 146, 042, 081, 010, 032, 161, 125, 040
		SAISHO	098, 031, 010, 057, 018, 309
		SAKIO	008

SALORA	021, 081, 118, 119, 010, 120, 161, 011, 012, 121, 126, 036, 049, 132, 116	TASHIKO	100, 055
SAMBERS	021, 027	TATUNG	031, 043, 046, 009, 057
SAMPO	082	TEC	001, 002, 003, 004, 089, 005, 031, 006, 007, 009, 010, 013, 014, 015, 016, 158, 079, 018
SAMSUNG	001, 002, 003, 004, 005, 031, 006, 007, 111, 008, 043, 009, 013, 014, 015, 016, 027, 097, 018, 127, 128, 152, 086, 084, 116	TECHNISAT	001, 002, 003, 004, 005, 006, 007, 009, 013, 014, 015, 016
SANY	042	TECNISON	018
SANYO	153, 100, 101, 061, 055, 064, 108, 043, 095, 057, 058, 036, 102, 097, 086	TEKON	018, 084
SAOLRA	011	TELEAVIA	135, 107, 139, 042, 040
SBR	007, 154, 072	TELEFUNKEN	034, 035, 106, 138, 136, 140, 037, 042, 040, 050
SCHAUB LORENZ	153, 073, 081, 011, 012, 121, 123, 124, 125	TELETENT	005
SCHNEIDER	001, 002, 003, 004, 088, 089, 005, 031, 006, 007, 146, 028, 109, 092, 081, 009, 154, 010, 017, 011, 012, 013, 014, 015, 016, 122, 158, 099, 151	TELETECH	018
SCHNEIDER(F)	154	TELETON	088, 041, 109, 081, 010
SEG	058, 002, 003, 004, 005, 006, 108, 007, 111, 008, 009, 017, 013, 014, 015, 016, 158, 018	TELEUNKEN	138
SEI	098	TELEVIDEON	031, 021, 081, 119, 206
SEI SINUDYNE	146, 010, 012	TENSAI	001, 002, 003, 004, 005, 006, 007, 009, 119, 017, 013, 014, 015, 016, 158, 018
SELECO	055, 088, 089, 041, 109, 092, 081, 010, 058, 125, 077	TENSON	018
SENTRA	060, 010, 017, 068	TESLA	146
SHARP	002, 055, 058, 102	THOMSON	034, 035, 106, 112, 135, 107, 139, 042, 081, 040, 059
SIAREM	055, 146, 081, 010, 058	THORN	153, 060, 052, 062, 001, 002, 003, 004, 034, 106, 055, 064, 005, 006, 087, 149, 007, 065, 043, 044, 009, 154, 010, 095, 120, 057, 013, 068, 058, 014, 015, 016, 072, 113, 115
SICATEL	033	THORN-FERGUSON	107, 136, 008, 022, 044, 033
SIEMENS	101, 001, 002, 003, 004, 085, 063, 138, 143, 141, 005, 006, 087, 090, 091, 007, 111, 142, 009, 119, 096, 013, 014, 015, 016, 102	TOCOM	110
SIERA	031, 007, 146, 109, 154, 099	TOKYO	084
SIESTA	086	TOSHIBA	060, 055, 067, 068, 026, 077, 078
SILVER	008, 017, 086	TOWADA	158
SINGER	001, 002, 003, 004, 005, 006, 007, 146, 081, 009, 013, 014, 015, 016, 077	TRANS CONTINENTS	021, 125
SINUDYNE	098, 003, 146, 081	TRISTAR	017
SMARAGD	130	TRIUMPH	098, 111
SOLAVOX	010	UHER	001, 002, 003, 004, 005, 006, 007, 028, 041, 109, 074, 009, 119, 013, 014, 015, 016
SONOLOR	166, 010	ULTRAVOX	001, 002, 003, 004, 005, 031, 006, 007, 146, 081, 009, 010, 161, 013, 014, 015, 016
SONOKO	007, 018	UNIVERSUM	157, 008, 027
SONTEC	001, 002, 003, 004, 005, 007, 009, 013, 014, 015, 016	UNIVOX	146, 033
SONY	052, 053, 054, 055, 056, 057, 058	VEGAVOX	048
SPECTRA	079	VESTEL	001, 002, 003, 004, 005, 006, 007, 009, 047, 013, 014, 015, 016
STARLITE	018	VICTOR	163
STERN	088, 089, 041, 109, 010, 125	VIDEOTON	042, 118, 158
SUNSTAR	001, 002, 003, 004, 005, 006, 007, 009, 013, 014, 015, 016	VISION	001, 002, 003, 004, 005, 006, 007, 009, 119, 013, 014, 015, 016
SUPERTECH	001, 002, 003, 004, 005, 006, 007, 09, 010, 013, 014, 015, 016, 125, 018	VOXSON	146, 010, 125
TANDBERG	131	WALTHAM	118
TANDY	031, 043, 017	WATSON	001, 002, 003, 005, 143, 004, 006, 007, 009, 119, 017, 013, 014, 015, 016, 018
		WATT RADIO	031, 081, 010, 033, 012
		WEGA	055, 146
		WEGA COLOR	162

WHITE WESTINGHOUSE	001, 002, 003, 004, 005, 031, 006, 007, 146, 009, 119, 013, 014, 015, 016	PIONEER	110, 111, 114, 117, 113, 115, 112, 109
WINTERNITZ	059	RCA	025
YOKO	001, 002, 003, 004, 005, 031, 006, 007, 008, 009, 010, 017, 013, 014, 015, 016, 158, 097, 079, 018	REALISTIC	010, 036, 044, 095
ZANUSSI	088, 089, 041, 109, 010, 125	SANSUI	116, 048, 056, 043
ZOPPAS	088, 089, 041, 109, 125	SANYO	022, 023
		SCOTT	010
		SHARP	090, 093, 094
		SHERWOOD	014, 047, 048, 049, 050, 041
		SONY	014, 070, 071, 072, 073, 160, 075, 076, 077, 078, 079

**AMP**

ADC	020	TEAC	007, 010, 134, 118
ADCOM	001, 002, 003	TECHNICS	030, 135, 136
AIWA	014, 015, 018, 019, 087, 086	THETA DIGITAL	065
AKAI	033	TOSHIBA	109
AMC	016, 080, 081, 083	WARDS	031
ANGSTROM	066	YAMAHA	126, 029, 025
ARCAM	058	ZENITH	017
AUDIO ALCHEMY	027		
AUDIO TECHNICA	026		
AUDIOFILE	038		
B & K	045, 046		
CARVER	053, 011, 037, 038, 052, 031, 032, 010, 054		
CINEMA SOUND	084, 026		
CLARION	090		
DENON	083, 084, 085, 095, 096, 091, 092, 097, 089		
FISHER	022, 031		
FOSGATE	005		
GE	036		
GOLDSTAR	035		
HAFLER	039		
HARMAN KAR	005, 125, 127, 103, 104, 098		
HITACHI	021		
INKEL	123		
JVC	119, 120		
KENWOOD	090, 099, 128, 105, 094, 121, 123, 122, 129, 106, 124, 031		
KRELL	067, 063		
KYOCERA	020		
LEXICON	006		
LINN	057		
LUXMAN	042, 028, 008		
LXI	036		
MAGNAVOX	064		
MARANTZ	053, 011, 012, 116, 055, 032, 059		
MERIDIAN	060, 061		
MITSUBISHI	130, 131		
MONDIAL	068, 062		
NAKAMICHI	118, 034, 107		
NEC	030		
ONKYO	100, 133, 024, 132, 108, 101, 102		
OPTIMUS	090, 041		
PANASONIC	013		
PARASOUND	051		
PHILIPS	059, 055		

# TERMS & CONDITIONS

## XiVA™ SOFTWARE CUSTOMER SERVICE AGREEMENT

Your DMS4 Digital Music Server is powered by XiVA™ Software by Imerge Limited ("Imerge") licensed to Niles for use in the DMS4. This agreement explains the terms and conditions that will apply to your use of the Imerge XiVA™ Software.

### Definitions in this Agreement

"Imerge" or "we" means Imerge Limited (company registration number 03360764) whose registered office is at Bar Hill Business Park, Saxon Way, Bar Hill, Cambridge CB3 8SL England, United Kingdom;

"Software" means the XiVA™ Software on your DMS4 Digital Music Server and related XiVA™ accessory software.

"Service" means the use of XiVA™ Software related services provided to you by Imerge, for example the registration service via the Internet.

"You", "your" and "yourself" means you, the person entering into this agreement with Imerge;

"Registration Data" means your name, address, postcode and telephone number (optional) or email address (optional).

### Service Charges

You will be responsible for the interoperability between your XiVA™ home media appliance (your DMS4 Digital Music Server), your TV set and the public telephone service and all related charges.

### XiVA Software Privacy Policy

Imerge respects the privacy of your information and will handle any personal information you might supply to us when you register your DMS4 Digital Music Server in accordance with the XiVA™ Software Privacy Policy. A copy of this Privacy Policy is included as a part of this document and forms part of these terms and conditions. Please read it carefully.

### Conditions of Use

You agree not to use the Software and/or Service in a way that may reasonably be expected to interrupt, disturb or impair the working of the XiVA™ Software Service. You will not insert or knowingly or recklessly transmit, distribute, upload or otherwise make available emails, software, data or files that contain a virus or corrupt data; seek unauthorized entry into back office; hack into any aspect of the Software or Service; knowingly corrupt data; circumvent, or attempt to seek to circumvent, any of the security safeguards of Imerge or any of its suppliers; make any business use of the Service; or assist any third party to do any of these things. By registering, you agree to these terms and conditions.

### Title to Software and Intellectual Property

Imerge retains title to and ownership of all the XiVA™ Software and intellectual property rights in Imerge authorised products and XiVA™ home media appliances and the Service. Imerge also retains ownership of all Imerge copyrights and trademarks. Except as expressly authorised by Imerge, you agree not to copy, modify, reverse engineer, rent, lease, loan, sell, distribute, sublicense, or create derivative works based on the XiVA™ Software, in whole or in part.

You agree not to access the XiVA™ Software Service by any means other than through the interface provided by Imerge or an Imerge Business Partner for use in accessing the Service.

### Indemnity

Neither Imerge nor any of its directors, employees or other representatives will be liable for damages arising out of or in connection with the use of the Software. Save in respect of liability for death or personal injury arising out of negligence, Imerge hereby disclaim and exclude to the fullest extent permitted by law all liability for any loss or damage whatsoever and howsoever incurred including any consequential, special, secondary or indirect loss or damage or any damage to goodwill or profits or any loss of anticipated savings incurred by you, whether arising in tort, contract or otherwise, and arising out of or in relation to or in connection with your access to or use of or inability to use the Service or any software or content supplied to you in connection with the Service, or in connection with any failure of performance, error, omission, interruption, defect, delay in operation or transmission, computer virus or line or system failure even if Imerge or its employees or agents are advised of the possibility of such damages, losses or expenses.

### Limitations of Imerge's Liability

In no event will Imerge or its suppliers be liable to you or any third party for any loss of profits, loss of data, loss of revenue, loss of or loss of use of software, loss of or loss of use of equipment, to which the DMS4 Digital Music Server is connected, business interruption, or other indirect, consequential, special, or incidental damages of any nature arising from or relating to your use of the Software, even if Imerge has been advised of the possibility of such damages. You understand that these limitations of Imerge's and Imerge's suppliers' liability are a fundamental term of this agreement.

### Changes to the XiVA™ Software Service

Imerge reserves the right in its absolute discretion at any time and without notice to users of the Software to add, remove, amend or vary features of the Software or Service, temporarily or permanently, or on notice to all users to discontinue the Service altogether at any time in its discretion. You agree that Imerge shall not be liable to you or to any third party for any modification, suspension or discontinuance of the Service.

Imerge also reserves the right to change the terms and conditions of this agreement. Such changes shall be effective upon notification by Imerge. You are responsible for viewing any new terms and continued use after notification will confirm acceptance of such changes.

### Invalidity

If any part of these terms and conditions are unenforceable (including any provision in which we exclude our liability to you) the enforceability of any other part of these terms and conditions will not be affected.

### Governing Law

These terms and conditions shall be governed by and interpreted in accordance with the laws of England and Wales whose courts shall have jurisdiction to resolve any disputes between us. The official text of this agreement shall be in English. In the event any dispute concerning the construction or meaning of this agreement, reference shall be made only to this agreement as written in English and not to any translation into another language. If any provision of these terms and conditions is held by a court of competent jurisdiction to be contrary to the law then such provisions shall be construed as far as possible to reflect the intention of the parties and the other provisions shall remain in full force and effect.

### Entire Agreement

These terms and conditions set out the whole of the agreement relating to our supply of the Software and Service and shall supersede any prior agreements or representations in respect thereof. These terms and conditions cannot be varied except in writing, which can be delivered by electronic mail by Imerge. In particular nothing said by any sales person on behalf of Imerge or an Imerge Business Partner should be understood as a variation of these terms and conditions or an authorised representation about the Service or the nature and quality of items displayed thereon. Imerge shall have no liability for any such representation being untrue or misleading.

No person other than the parties to this agreement shall have the right to enforce any of its terms under the Contracts (Rights of Third Parties) Act, 1999.

These terms do not relate to your purchase of the XiVA™ home media appliance itself, which is governed by a separate warranty agreement provided by Imerge's Business Partner or their agent.

### Assignment

You shall not assign any of your rights or obligations under these terms and conditions without Imerge's prior written consent. Imerge shall have the right to assign or otherwise delegate all or any of its rights or obligations under these terms and conditions on notification to you.

### Waiver

Imerge's failure to exercise or enforce any of its rights under these terms and conditions shall not constitute a waiver of any such right.

### Notices

Any and all notices to be given by either Imerge or you to the other under these terms and conditions shall be deemed sufficiently given when sent by email or facsimile transmission in each case addressed to you at the email address or facsimile number you have given us or to Imerge at the email address or facsimile number displayed at [www.xiva.com](http://www.xiva.com)

BY USING THE SERVICE, I CONFIRM THAT I HAVE READ AND UNDERSTOOD THIS ENTIRE AGREEMENT AND I AGREE TO ALL THE TERMS OF THIS AGREEMENT AS STATED ABOVE.

## MICROSOFT END-USER LICENSE AGREEMENT

- You have acquired a device ("DEVICE") that includes software licensed by Imerge Ltd. from an affiliate of Microsoft® Corporation ("MS"). Those installed software products of MS origin, as well as associated media, printed materials, and "online" or electronic documentation ("SOFTWARE") are protected by international intellectual property laws and treaties. Manufacturer, MS and its suppliers (including Microsoft Corporation) own the title, copyright, and other intellectual property rights in the SOFTWARE. The SOFTWARE is licensed, not sold. All rights reserved
- This End User License Agreement ("EULA") is valid and grants the end-user rights ONLY if the SOFTWARE is genuine and a genuine Certificate of Authenticity for the SOFTWARE is included. For more information on identifying whether your software is genuine, please see <http://www.microsoft.com/piracy/howtotell>
- IF YOU DO NOT AGREE TO THIS EULA, DO NOT USE THE DEVICE OR COPY THE SOFTWARE. INSTEAD, PROMPTLY CONTACT YOUR DEALER. FOR INSTRUCTIONS ON RETURN OF THE UNUSED DEVICE(S) FOR A REFUND. ANY USE OF THE SOFTWARE, INCLUDING BUT NOT LIMITED TO USE ON THE DEVICE, WILL CONSTITUTE YOUR AGREEMENT TO THIS EULA (OR RATIFICATION OF ANY PREVIOUS CONSENT)
- GRANT OF SOFTWARE LICENSE. This EULA grants you the following license:
  - You may use the SOFTWARE only on the DEVICE
  - Restricted Functionality. You are licensed to use the SOFTWARE to provide only the limited functionality (specific tasks or processes) for which the DEVICE has been designed and marketed by Imerge Ltd.. This license specifically prohibits any other use of the software programs or functions, or inclusion of additional software programs or functions that do not directly support the limited functionality on the DEVICE. Notwithstanding the foregoing, you may install or enable on a DEVICE, systems utilities, resource management or similar software solely for the purpose of administration, performance enhancement and/or preventive maintenance of the DEVICE
  - If you use the DEVICE to access or utilize the services or functionality of Microsoft Windows Server products (such as Microsoft Windows Server 2003), or use the DEVICE to permit workstation or computing devices to access or utilize the services or functionality of Microsoft Windows Server products, you may be required to obtain a Client Access License for the DEVICE and/or each such workstation or computing device. Please refer to the end user license agreement for your Microsoft Windows Server product for additional information
  - NOT FAULT TOLERANT. THE SOFTWARE IS NOT FAULT TOLERANT. Imerge Ltd. HAS INDEPENDENTLY DETERMINED HOW TO USE THE SOFTWARE IN THE DEVICE, AND MS HAS RELIED UPON Imerge Ltd. TO CONDUCT SUFFICIENT TESTING TO DETERMINE THAT THE SOFTWARE IS SUITABLE FOR SUCH USE
  - NO WARRANTIES FOR THE SOFTWARE. THE SOFTWARE is provided "AS IS" and with all faults. THE ENTIRE RISK AS TO SATISFACTORY QUALITY, PERFORMANCE, ACCURACY, AND EFFORT (INCLUDING LACK OF NEGLIGENCE) IS WITH YOU. ALSO, THERE IS NO WARRANTY AGAINST INTERFERENCE WITH YOUR ENJOYMENT OF THE SOFTWARE OR AGAINST INFRINGEMENT. IF YOU HAVE RECEIVED ANY WARRANTIES REGARDING THE DEVICE OR THE SOFTWARE, THOSE WARRANTIES DO NOT ORIGINATE FROM, AND ARE NOT BINDING ON, MS
  - No Liability for Certain Damages. EXCEPT AS PROHIBITED BY LAW, MS SHALL HAVE NO LIABILITY FOR ANY INDIRECT, SPECIAL, CONSEQUENTIAL OR INCIDENTAL DAMAGES ARISING FROM OR IN CONNECTION WITH THE USE OR PERFORMANCE OF THE SOFTWARE. THIS LIMITATION SHALL APPLY EVEN IF ANY REMEDY FAILS OF ITS ESSENTIAL PURPOSE. IN NO EVENT SHALL MS BE LIABLE FOR ANY AMOUNT IN EXCESS OF U.S. TWO HUNDRED FIFTY DOLLARS (U.S. \$250.00)
  - Restricted Uses. The SOFTWARE is not designed or intended for use or resale in hazardous environments requiring fail-safe performance, such as in the operation of nuclear facilities, aircraft navigation or communication systems, air traffic control, or other devices or systems in which a malfunction of the SOFTWARE would result in foreseeable risk of injury or death to the operator of the device or system, or to others
  - Limitations on Reverse Engineering, Decompilation, and Disassembly. You may not reverse engineer, decompile, or disassemble the SOFTWARE, except and only to the extent that such activity is expressly permitted by applicable law notwithstanding this limitation
  - SOFTWARE as a Component of the DEVICE - Transfer. This license may not be shared, transferred to or used concurrently on different
- computers. The SOFTWARE is licensed with the DEVICE as a single integrated product and may only be used with the DEVICE. If the SOFTWARE is not accompanied by a DEVICE, you may not use the SOFTWARE. You may permanently transfer all of your rights under this EULA only as part of a permanent sale or transfer of the DEVICE, provided you retain no copies of the SOFTWARE. If the SOFTWARE is an upgrade, any transfer must also include all prior versions of the SOFTWARE. This transfer must also include the Certificate of Authenticity label. The transfer may not be an indirect transfer, such as a consignment. Prior to the transfer, the end user receiving the SOFTWARE must agree to all the EULA terms
- Consent to Use of Data. You agree that MS, Microsoft Corporation and their affiliates may collect and use technical information gathered in any manner as part of product support services related to the SOFTWARE. MS, Microsoft Corporation and their affiliates may use this information solely to improve their products or to provide customized services or technologies to you. MS, Microsoft Corporation and their affiliates may disclose this information to others, but not in a form that personally identifies you
- Internet-Based Services Components. The SOFTWARE may contain components that enable and facilitate the use of certain Internet-based services. You acknowledge and agree that MS, Microsoft Corporation or their affiliates may automatically check the version of the SOFTWARE and/or its components that you are utilizing and may provide upgrades or supplements to the SOFTWARE that may be automatically downloaded to your DEVICE. Microsoft Corporation or their affiliates do not use these features to collect any information that will be used to identify you or contact you. For more information about these features, please see the privacy statement at <http://go.microsoft.com/fwlink/?LinkId=25243>
- Links to Third Party Sites. You may link to third party sites through the use of the SOFTWARE. The third party sites are not under the control of MS or Microsoft Corporation, and MS or Microsoft are not responsible for the contents of any third party sites, any links contained in third party sites, or any changes or updates to third party sites. MS or Microsoft Corporation is not responsible for webcasting or any other form of transmission received from any third party sites. MS or Microsoft Corporation are providing these links to third party sites to you only as a convenience, and the inclusion of any link does not imply an endorsement by MS or Microsoft Corporation of the third party site
- Notice Regarding Security. To help protect against breaches of security and malicious software, periodically back up your data and system information, use security features such as firewalls, and install and use security updates
- No Rental/Commercial Hosting. You may not rent, lease, lend or provide commercial hosting services with the SOFTWARE to others
- Separation of Components. The SOFTWARE is licensed as a single product. Its component parts may not be separated for use on more than one computer
- Additional Software/Services. This EULA applies to updates, supplements, add-on components, product support services, or Internet-based services components ("Supplemental Components"), of the SOFTWARE that you may obtain from Imerge Ltd., MS, Microsoft Corporation or their subsidiaries after the date you obtain your initial copy of the SOFTWARE, unless you accept updated terms or another agreement governs. If other terms are not provided along with such Supplemental Components and the Supplemental Components are provided to you by MS, Microsoft Corporation or their subsidiaries then you will be licensed by such entity under the same terms and conditions of this EULA, except that (i) MS, Microsoft Corporation or their subsidiaries providing the Supplemental Components will be the licensor with respect to such Supplemental Components in lieu of "Imerge Ltd." for the purposes of the EULA, and (ii) TO THE MAXIMUM EXTENT PERMITTED BY APPLICABLE LAW, THE SUPPLEMENTAL COMPONENTS AND ANY (IF ANY) SUPPORT SERVICES RELATED TO THE SUPPLEMENTAL COMPONENTS ARE PROVIDED AS IS AND WITH ALL FAULTS. ALL OTHER DISCLAIMERS, LIMITATION OF DAMAGES, AND SPECIAL PROVISIONS PROVIDED BELOW AND/OR OTHERWISE WITH THE SOFTWARE SHALL APPLY TO SUCH SUPPLEMENTAL COMPONENTS. MS, Microsoft Corporation or their subsidiaries reserve the right to discontinue any Internet-based services provided to you or made available to you through the use of the SOFTWARE
- End User Proof of License. If you acquired the SOFTWARE on a DEVICE, or on a compact disc or other media, a genuine Microsoft "Proof of License"/Certificate of Authenticity label with a genuine copy of the SOFTWARE identifies a licensed copy of the SOFTWARE. To be valid, the label must be affixed to the DEVICE, or appear on Imerge Ltd's software packaging. If you receive the label separately other than from Imerge Ltd., it is invalid. You should keep

the label on the DEVICE or packaging to prove that you are licensed to use the SOFTWARE.

- Product Support. Product support for the SOFTWARE is not provided by MS, Microsoft Corporation, or their affiliates or subsidiaries. For product support, please refer to Imerge Ltd. support number provided in the documentation for the DEVICE. Should you have any questions concerning this EULA, or if you desire to contact Imerge Ltd. for any other reason, please refer to the address provided in the documentation for the DEVICE.
- Termination. Without prejudice to any other rights, Imerge Ltd. may terminate this EULA if you fail to comply with the terms and conditions of this EULA. In such event, you must destroy all copies of the SOFTWARE and all of its component parts.
- EXPORT RESTRICTIONS. You acknowledge that SOFTWARE is subject to U.S. and European Union export jurisdiction. You agree to comply with all applicable international and national laws that apply to the SOFTWARE, including the U.S. Export Administration Regulations, as well as end-user, end-use and destination restrictions issued by U.S. and other governments. For additional information see <http://www.microsoft.com/exporting/>.

## MACROMEDIA FLASH RUN-TIME DISTRIBUTION LICENSE

Publisher's end-user license agreement shall contain, at a minimum, the following limitations:

- (1) no title to, or ownership rights in the Publisher Product or any portion of the Publisher Product are transferred;
- (2) the end-user shall not reverse compile or disassemble the Publisher Product

## TRADEMARK INFORMATION

All brand names, product names, and trademarks are the sole property of their respective owners. Windows is a registered trademark of Microsoft Corporation. Windows 95/98/Me/XP and Windows NT/2000 are trademarks of Microsoft Corporation.

iTunes is a trademark of Apple Computer, Inc. Windows Media Player is a trademark of Microsoft Corporation

## GRACENOTE END-USER LICENSE AGREEMENT

USE OF THIS PRODUCT IMPLIES ACCEPTANCE OF THE TERMS BELOW.

Gracenote® MusicID® Terms of Use

This device contains software from Gracenote, Inc. of Emeryville, California ("Gracenote"). The software from Gracenote (the "Gracenote Software") enables this application to do online disc identification and obtain music-related information, including name, artist, track, and title information ("Gracenote Data") from online servers ("Gracenote Servers") and to perform other functions. You may use Gracenote Data only by means of the intended End-User functions of this device.

You agree that you will use Gracenote Data, the Gracenote Software, and Gracenote Servers for your own personal non-commercial use only. You agree not to assign, copy, transfer or transmit the Gracenote Software or any Gracenote Data to any third party. YOU AGREE NOT TO USE OR EXPLOIT GRACENOTE DATA, THE GRACENOTE SOFTWARE, OR GRACENOTE SERVERS, EXCEPT AS EXPRESSLY PERMITTED HEREIN.

You agree that your non-exclusive license to use the Gracenote Data, the Gracenote Software, and Gracenote Servers will terminate if you violate these restrictions. If your license terminates, you agree to cease any and all use of the Gracenote Data, the Gracenote Software, and Gracenote Servers. Gracenote reserves all rights in Gracenote Data, the Gracenote Software, and the Gracenote Servers, including all ownership rights. Under no circumstances will Gracenote become liable for any payment to you for any information that you provide. You agree that Gracenote, Inc. may enforce its rights under this Agreement against you directly in its own name.

The Gracenote MusicID Service uses a unique identifier to track queries for statistical purposes. The purpose of a randomly assigned numeric identifier is to allow the Gracenote MusicID service to count queries without knowing anything about who you are. For more information, see the web page for the Gracenote Privacy Policy for the Gracenote MusicID Service.

The Gracenote Software and each item of Gracenote Data are licensed to you "AS IS." Gracenote makes no representations or warranties, express or implied, regarding the accuracy of any Gracenote Data from in the Gracenote Servers. Gracenote reserves the right to delete data from the Gracenote Servers or to change data categories for any cause that Gracenote deems sufficient. No warranty is made that the Gracenote Software or Gracenote Servers are error-free or that functioning of Gracenote Software or Gracenote Servers will be uninterrupted. Gracenote is not obligated to provide you with new enhanced or additional data types or categories that Gracenote may provide in the future and is free to discontinue its online services at any time.

GRACENOTE DISCLAIMS ALL WARRANTIES EXPRESS OR IMPLIED, INCLUDING, BUT NOT LIMITED TO, IMPLIED WARRANTIES OF MERCHANTABILITY, FITNESS FOR A PARTICULAR PURPOSE, TITLE, AND NON-INFRINGEMENT. GRACENOTE DOES NOT WARRANT THE RESULTS THAT WILL BE OBTAINED BY YOUR USE OF THE GRACENOTE SOFTWARE OR ANY GRACENOTE SERVER. IN NO CASE WILL GRACENOTE BE LIABLE FOR ANY CONSEQUENTIAL OR INCIDENTAL DAMAGES OR FOR ANY LOST PROFITS OR LOST REVENUES.

© Gracenote 2006 Version 2.2



# SPECIFICATIONS

## General

- Power Requirements.....AC 100-240V ~50Hz/60Hz
- Power Consumption.....60W Max
- Weight.....8.5Kg/18.7lbs Max
- Dimensions.....101mm(H) x 437mm(W) x 367mm(D)  
4" (H) x 17.2" (W) x 14.4" (D)
- Ambient operating temperature.....10-40°C/50-104°F
- Operating humidity.....10-90% RH (non-condensing)

## Video Outputs

### S-Video Output

- Output level.....1Vp-p/75Ω
- Connector.....S-VIDEO socket

### Composite video output

- Output level.....1Vp-p/75Ω
- Connector.....RCA socket

### VGA output

- Output level.....0.75Vp-p/75Ω
- Connector.....15 pin D-type F
- Output resolution.....800x600

## Audio Outputs

### Analog outputs (Up to 4 pairs of outputs)

- Output level.....2V RMS
- Output impedance.....600Ω
- Connector.....RCA socket

### Digital outputs

- Optical output connector.....Toslink
- Coaxial output level.....500mVp-p/75Ω
- Coaxial output connector.....RCA socket

## Audio Inputs

### Analog inputs

- Maximum input level.....2V RMS
- Input impedance.....10kΩ
- Connector.....RCA socket

### Digital inputs

- SRC supported frequency.....32kHz, 44.1kHz, 48kHz
- Maximum input level.....500mVp-p/75Ω
- Coaxial input connector.....RCA Jack
- Optical input connector.....Toslink

## Analog Audio Characteristics (typical)

- Frequency response.....20Hz to 20kHz ± 0.5dB
- S/N ratio (@1KHz).....100dB (A weight)
- Dynamic range.....better than 96dB
- Total harmonic distortion (@1kHz).....0.003%
- Channel separation (@1KHz).....110dB

## Communications & Data I/O

### Ethernet

- Connector.....RJ45 (10 Base T/100 Base T) socket

### RS232 Controller

- Connector.....9 pin D-type male

### Wired IR Input

- Maximum input level.....5V
- Connector.....3.5mm/0.14" mini-jack socket

### USB (2 connectors)

- Connector.....Type A USB socket

# LIMITED WARRANTY

Niles Audio Corporation ("NILES") warrants this IntelliControl® ICS product to the original purchaser to be free of manufacturing defects in material and workmanship for a period of one year from date of purchase.

This Warranty is subject to the following additional conditions and limitations. The Warranty is void and inapplicable if NILES deems that the product has been used or handled other than in accordance with the instructions provided by the manufacturer, including but not limited to damage caused by accident, mishandling, improper installation, abuse, negligence, or normal wear and tear, or any defect caused by repair to the product by anyone other than NILES or an authorized NILES dealer.

To obtain warranty service, take the unit to the nearest authorized NILES dealer, who will test the product and if necessary, forward it to NILES for service. If there are no authorized NILES dealers in your area, you must write to NILES and include your name, address, model and serial number of your unit, along with a brief description of the problem. A factory Return Authorization Number will be sent to you. Do not return any unit without first receiving written authorization and shipping instructions from NILES.

If the above conditions are met, the purchaser's sole remedy shall be to return the product to NILES, in which case NILES will repair or replace, at its sole option, the defective product without charge for parts or labor. NILES will return a unit repaired or replaced under warranty by shipping same by its usual shipping method from the factory (only) at its expense within the United States of America. There are no other warranties, including without limitation, either express or implied warranties of merchantability or fitness for a particular purpose, with respect to the product.

Repair or replacement as provided under this warranty is the exclusive remedy of the consumer/purchaser. NILES shall not be responsible for any incidental or consequential damages except to the extent provided (or prohibited) by applicable law.

Some states do not allow the exclusion or limitation of incidental or consequential damages, so the above limitation may not apply to you. This warranty gives you specific legal rights, and you may also have other rights which vary from state to state.

For the name of your nearest authorized NILES dealer contact:

NILES AUDIO CORPORATION, P.O. BOX 160818

MIAMI, FLORIDA 33116-0818.

Please fill in your product information and retain for your records:

Model: \_\_\_\_\_

Purchase Date: \_\_\_\_\_

Serial No.: \_\_\_\_\_

E N G I N E E R E D B Y



NILES®

**1 - 800 - BUY - HIFI - [www.nilesaudio.com](http://www.nilesaudio.com)**

©2007 Niles Audio Corporation 12331 S.W. 130 Street, Miami, FL 33186. Telephone: (305) 238-4373. All rights reserved. Niles, the Niles logos, IntelliControl®, IntelliFile®, and iRemote® are registered trademarks of Niles Audio Corporation. XiVA™ is a trademark of Imerge Ltd. All other trademarks are the property of their respective owners. Niles reserves the right to change specifications, descriptions and prices without notice. The technical and other information contained herein is not intended to set forth all technical and other specifications. Part No. PK00368-01.

## Free Manuals Download Website

<http://myh66.com>

<http://usermanuals.us>

<http://www.somanuals.com>

<http://www.4manuals.cc>

<http://www.manual-lib.com>

<http://www.404manual.com>

<http://www.luxmanual.com>

<http://aubethermostatmanual.com>

Golf course search by state

<http://golfingnear.com>

Email search by domain

<http://emailbydomain.com>

Auto manuals search

<http://auto.somanuals.com>

TV manuals search

<http://tv.somanuals.com>