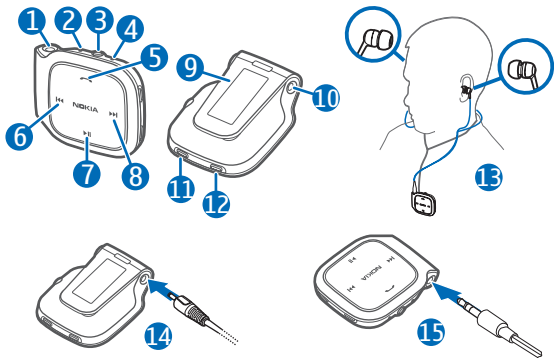


# Nokia Bluetooth Stereo Headset BH-214

---



9214016/1

## DECLARATION OF CONFORMITY

Hereby, NOKIA CORPORATION declares that this BH-214 product is in compliance with the essential requirements and other relevant provisions of Directive 1999/5/EC. A copy of the Declaration of Conformity can be found at [http://www.nokia.com/phones/declaration\\_of\\_conformity/](http://www.nokia.com/phones/declaration_of_conformity/).

**CE 0197** 

© 2009 Nokia. All rights reserved.

Nokia, Nokia Connecting People and the Nokia Original Accessories logo are trademarks or registered trademarks of Nokia Corporation. Nokia tune is a sound mark of Nokia Corporation. Other product and company names mentioned herein may be trademarks or tradenames of their respective owners.

Reproduction, transfer, distribution, or storage of part or all of the contents in this document in any form without the prior written permission of Nokia is prohibited.

Bluetooth is a registered trademark of Bluetooth SIG, Inc.

Nokia operates a policy of ongoing development. Nokia reserves the right to make changes and improvements to any of the products described in this document without prior notice.

To the maximum extent permitted by applicable law, under no circumstances shall Nokia or any of its licensors be responsible for any loss of data or income or any special, incidental, consequential or indirect damages howsoever caused.

The contents of this document are provided "as is". Except as required by applicable law, no warranties of any kind, either express or implied, including, but not limited to, the implied warranties of merchantability and fitness for a particular purpose, are made in relation to the accuracy, reliability or contents of this document. Nokia reserves the right to revise this document or withdraw it at any time without prior notice.

The availability of particular products may vary by region. Please check with your Nokia dealer for details.

Export controls

This device may contain commodities, technology or software subject to export

laws and regulations from the US and other countries. Diversion contrary to law is prohibited.

## Introduction

---

With the Nokia Bluetooth Stereo Headset BH-214, you can make and answer calls hands-free with your compatible mobile device. You can also listen to music from a compatible music player.

Read this user guide carefully before using the headset. Also, read the user guide for the device that you connect to the headset.

This product may contain small parts. Keep them out of the reach of small children. The surface of this device is nickel-free.

### **Bluetooth wireless technology**

Bluetooth wireless technology allows you to connect compatible devices

without cables. The headset and the other device do not need to be in line of sight, but they should be within 10 metres (33 feet) of each other. Connections may be subject to interference from obstructions, such as walls, or other electronic devices.

The headset is compliant with the Bluetooth Specification 2.1 + EDR supporting the following profiles: Headset Profile 1.2, Hands-Free Profile (HFP) 1.5, Advanced Audio Distribution Profile (A2DP) 1.2, and Audio Video Remote Control Profile 1.0. Check with the manufacturers of other devices to determine their compatibility with this device.

## Get started

The headset contains the following parts shown on the title page: 3.5 mm audio connector (1) for headphones, microphone (2), power key (3), indicator light (4), answer/end key (5), rewind key (6), play/pause key (7), forward key (8), clip (9), charger connector (10), volume up key (11), and volume down key (12).

Before using the headset, you must charge the battery and pair the headset with a compatible device.

Parts of the device are magnetic. Metallic materials may be attracted to the device. Do not place credit cards or other magnetic storage media near the device, because information stored on them may be erased.

## Charge the battery

Before charging the battery, carefully read "Battery and charger information".



**Warning:** Use only chargers approved by Nokia for use with this particular model.

The use of any other types may invalidate any approval or warranty, and may be dangerous.

When you disconnect the power cord of any accessory, grasp and pull the plug, not the cord.

1. Connect the charger to a wall outlet.
2. Connect the charger cable to the charger connector (14). The red indicator light is displayed during charging. Charging the battery fully may take up to 2 hours.

3. When the battery is fully charged, the green indicator light is displayed. Disconnect the charger from the headset, then from the wall outlet.

The fully charged battery has power for up to 8 hours of talk time, up to 300 hours of standby time, or up to 7 hours of music playing time.

To check the battery charge when the headset is not connected to a charger, press the answer/end key when the headset is switched on and no call is in progress. If the indicator light is green, the charge level is sufficient. If the light is yellow, you may need to recharge the battery soon. If the light is red, recharge the battery.

When the battery charge is low, the headset beeps every 5 minutes and the red indicator light flashes.

## Switch on or off

To switch on, press and hold the power key for about 2 seconds. The headset beeps, and the green indicator light is displayed. The headset tries to connect to the last connected mobile device.

To switch off, press and hold the power key for about 5 seconds. The headset beeps, and the red indicator light is briefly displayed. If the headset is not connected to a device within about 30 minutes, it switches off automatically.

## Pair and connect the headset

Before using the headset, you must pair and connect it with a compatible device.

If your mobile device supports the A2DP Bluetooth profile and has a music player feature, you can use the

device to also play music through the headset.

If your mobile device does not support the A2DP profile, you can separately pair the headset with the mobile device and a music player that supports this profile. If you have paired and connected the headset with your mobile device, disconnect the headset from it before pairing the headset with the music player.

1. Ensure that your mobile device or music player is switched on and the headset is off.
2. Press and hold the power key (for about 5 seconds) until the blue indicator light starts to flash quickly.
3. Within about 3 minutes, activate the Bluetooth feature on your device, and set it to search for Bluetooth devices.

4. Select the headset from the list of found devices.

5. If necessary, enter the passcode 0000 to pair and connect the headset to your device. If your device does not have a keypad, it may use this passcode by default.

In some devices, you may need to make the connection separately after pairing.

When the headset is connected to your device and is ready for use, the blue indicator light flashes slowly.

You can pair the headset with up to eight devices but connect it to only one device supporting the HFP profile and another device supporting the A2DP profile at a time.

To manually connect the headset to the last used device that supports the HFP profile (for example, after connection loss), switch the headset off and on, or press and hold the

answer/end key for about 2 seconds. To manually connect the headset to a device that supports the A2DP profile, press the play/pause key.

You may be able to set your device so that the headset connects to it automatically. To activate this feature in a Nokia device, change the paired device settings in the Bluetooth menu.

## Basic use

---

### Wear the headset

Plug a pair of headphones into the audio connector (15).

Use the clip to attach the headset to your clothing. Place the right headphone cable (indicated with R) over your shoulders, and gently insert the earplugs into your ears (13). Place the headset within about 30 cm (11.81 inches) from your mouth.



**Warning:** When you use the headset, your ability to hear outside sounds may be affected. Do not use the headset where it can endanger your safety.

### Adjust the volume

To adjust the headset volume, press the volume up or down key during a call or while listening to music. To adjust the volume quickly, press and hold either key.

You can also adjust the headset volume on the connected A2DP device if it supports this feature.

### Calls

To make a call, use your mobile device in the normal way when the headset is connected to it.

To redial the number you last called (if your mobile device supports this feature with the headset), when no call is in progress, press the answer/end key twice.

To activate voice dialling (if your mobile device supports this feature with the headset), when no call is in progress, press and hold the answer/end key for about 2 seconds. Proceed as described in the user guide of the mobile device.

To answer or end a call, press the answer/end key. To reject a call, press this key twice.

To switch a call from the headset to a compatible mobile device, press and hold the answer/end key for about 2 seconds, or switch off the headset. To switch the call back to the headset, press and hold the answer/end key for about 2 seconds, or switch on the headset.

## Listen to music

To listen to music, connect the headset to a compatible music player that supports the A2DP Bluetooth profile.

The available music functions depend on your music player.

If you receive or make a call while listening to music, the music is paused until you end the call.



**Warning:** Listen to music at a moderate level. Continuous exposure to high volume may damage your hearing.

To play a song, select it in the music player, and press the play/pause key.

To pause or resume playing, press the play/pause key. To stop playing, press and hold the play/pause key.

To select the next song during playback, press the forward key. To select the previous song, press the



rewind key twice. To scroll through the current song quickly, press and hold either key.

### **Turn lights on or off**

By default, the indicator lights are shown in all situations. To turn the lights off in some situations (for example, during a call or when the headset is connected to a mobile device) or back on, press and hold the power key and the answer/end key for about 5 seconds when the headset is connected to a device.

### **Clear settings or reset**

To clear the volume and pairing settings from the headset, press and

hold the power key and the answer/end key (for about 5 seconds) until the red and green indicator lights start to alternate.

To reset the headset if it stops functioning, even though it is charged, connect the headset to a charger while you press and hold the power key.

### **Troubleshooting**

If you cannot connect the headset to your compatible device, check that the headset is charged, switched on, and paired with the device.

## **Battery and charger information**

---

This device has an internal, nonremovable, rechargeable battery. Do not attempt to remove the battery from

the device as you may damage the device. This device is intended for use when supplied with power from the

following chargers: AC-3, AC-4, AC-5, AC-8, DC-4, and DC-9. The exact charger model number may vary depending on the type of plug. The plug variant is identified by one of the following: E, EB, X, AR, U, A, C, or UB. The battery can be charged and discharged hundreds of times, but it will eventually wear out. Recharge your battery only with Nokia approved chargers designated for this device. Use of an unapproved charger may present a risk of fire, explosion, leakage, or other hazard.

If a battery is being used for the first time or if the battery has not been used for a prolonged period, it may be necessary to connect the charger, then disconnect and reconnect it to begin charging the battery. If the battery is completely discharged, it may take several minutes before the charging indicator light is displayed.

Unplug the charger from the electrical plug and the device when not in use. Do not leave a fully charged battery

connected to a charger, since overcharging may shorten its lifetime. If left unused, a fully charged battery will lose its charge over time.

Always try to keep the battery between 15°C and 25°C (59°F and 77°F). Extreme temperatures reduce the capacity and lifetime of the battery. A device with a hot or cold battery may not work temporarily. Battery performance is particularly limited in temperatures well below freezing.

Do not dispose of batteries in a fire as they may explode. Batteries may also explode if damaged.

Never use any charger that is damaged.



**Important:** Battery operating times are estimates only and depend on network

conditions, features used, battery age and condition, temperatures to which battery is exposed, and many other factors.

## Care and maintenance

Your device is a product of superior design and craftsmanship and should be treated with care. The following suggestions will help you protect your warranty coverage.

- Keep the device dry. Precipitation, humidity, and all types of liquids or moisture can contain minerals that will corrode electronic circuits. If your device does get wet, allow it to dry completely.
- Do not use or store the device in dusty, dirty areas. Its moving parts and electronic components can be damaged.
- Do not store the device in hot areas. High temperatures can shorten the life of electronic devices, damage batteries, and warp or melt certain plastics.
- Do not store the device in cold areas.  
When the device returns to its normal

temperature, moisture can form inside the device and damage electronic circuit boards.

- Do not attempt to open the device.
- Do not drop, knock, or shake the device. Rough handling can break internal circuit boards and fine mechanics.
- Do not use harsh chemicals, cleaning solvents, or strong detergents to clean the device.
- Do not paint the device. Paint can clog the moving parts and prevent proper operation.

These suggestions apply equally to your device, charger, or any accessory. If any device is not working properly, take it to the nearest authorised service facility for service.



## Recycle

The crossed-out wheeled-bin symbol on your product, battery, literature, or packaging reminds

you that all electrical and electronic products, batteries, and accumulators must be taken to separate collection at the end of their working life. This requirement applies in the European Union. Do not dispose of these products as unsorted municipal waste. For more environmental information, see the product Eco-Declarations at [www.nokia.com/environment](http://www.nokia.com/environment).

Always return your used electronic products, batteries, and packaging materials to a dedicated collection point. This way you help prevent uncontrolled waste disposal and promote the recycling of materials. More detailed information is available from the product retailer, local waste authorities, national producer responsibility organisations, or your local Nokia representative. Check how to recycle your Nokia products at

[www.nokia.com/werecycle](http://www.nokia.com/werecycle), or if browsing on a mobile device, [www.nokia.mobi/werecycle](http://www.nokia.mobi/werecycle).

## Free Manuals Download Website

<http://myh66.com>

<http://usermanuals.us>

<http://www.somanuals.com>

<http://www.4manuals.cc>

<http://www.manual-lib.com>

<http://www.404manual.com>

<http://www.luxmanual.com>

<http://aubethermostatmanual.com>

Golf course search by state

<http://golfingnear.com>

Email search by domain

<http://emailbydomain.com>

Auto manuals search

<http://auto.somanuals.com>

TV manuals search

<http://tv.somanuals.com>