

# Browser-Based Interface Quick Guide



## Alteon OS 21.0™

Layer 2-7 GbE Switch Module  
for IBM BladeCenter

Part Number: 24R9744, March 2006

**NORTEL**  
NETWORKS™

4655 Great America Parkway  
Santa Clara, CA 95054  
[www.nortelnetworks.com](http://www.nortelnetworks.com)  
Reference: 215656-D

Copyright 2004 Nortel Networks, Inc., Great America Parkway, Santa Clara, California 95054, USA. All rights reserved. Part Number: 24R9744.

This document is protected by copyright and distributed under licenses restricting its use, copying, distribution, and decompilation. No part of this document may be reproduced in any form by any means without prior written authorization of Nortel Networks, Inc. Documentation is provided “as is” without warranty of any kind, either express or implied, including any kind of implied or express warranty of non-infringement or the implied warranties of merchantability or fitness for a particular purpose.

U.S. Government End Users: This document is provided with a “commercial item” as defined by FAR 2.101 (Oct 1995) and contains “commercial technical data” and “commercial software documentation” as those terms are used in FAR 12.211-12.212 (Oct 1995). Government End Users are authorized to use this documentation only in accordance with those rights and restrictions set forth herein, consistent with FAR 12.211- 12.212 (Oct 1995), DFARS 227.7202 (JUN 1995) and DFARS 252.227-7015 (Nov 1995).

Nortel Networks, Inc. reserves the right to change any products described herein at any time, and without notice. Nortel Networks, Inc. assumes no responsibility or liability arising from the use of products described herein, except as expressly agreed to in writing by Nortel Networks, Inc. The use and purchase of this product does not convey a license under any patent rights, trademark rights, or any other intellectual property rights of Nortel Networks, Inc.

Alteon OS, BBI, are the trademarks of Nortel Networks in the United States and certain other countries. Microsoft<sup>®</sup>, Windows<sup>®</sup>, and Windows NT<sup>®</sup> are registered trademarks of Microsoft Corporation in the United States and in other countries. Netscape<sup>®</sup> and Netscape Navigator<sup>®</sup> are registered trademarks of Netscape Communications Corporation in the United States and other countries. Any other trademarks appearing in this manual are owned by their respective companies.



# Contents

---

## **Preface 5**

- Who Should Use This Book 5
- Related Documentation 5
- Typographic Conventions 6
- How to Get Help 7

## **Chapter 1: Getting Started 9**

- Features 9
- Requirements 10
- Switch Set Up 10
  - IP Interfaces 10
  - Enabling/Disabling BBI Access 10
- Web Browser Set Up 11
- Starting the BBI 11

## **Chapter 2: Browser-Based Interface Basics 15**

- Toolbar 16
  - Context Buttons 16
  - Commands 17
- Navigation Window 18
- Forms Window 18
- Message Window 19

## **Chapter 3: Configuring the Switch 21**

- Configuration Steps 21
  - Using the BBI to Load Switch Software 23

## **Chapter 4: Viewing Statistics 27**

- Steps for Displaying Statistics 27

**Chapter 5: The Dashboard 29**  
Steps for Displaying Dashboards 29



# Preface

---

Alteon OS Browser-Based Interface (BBI) software is included in the GbE Switch Module. The BBI software lets you use your Web browser to access switch information and statistics, and to perform switch configuration via the Internet.

This *BBI Quick Guide* provides an overview of how to access and use the Browser-Based Interface.

## Who Should Use This Book

---

This *BBI Quick Guide* is intended for network installers and system administrators engaged in configuring and maintaining a network. It assumes that you are familiar with your GbE Switch Module, your Web browser, Ethernet concepts, IP addressing, the IEEE 802.1d Spanning-Tree Protocol, and SNMP configuration parameters.

## Related Documentation

---

For documentation on installing the switch physically, see the *Installation Guide* for your GbE Switch Module.

For details about the switch information, statistics, and configuration parameters available using the Alteon OS BBI, see the *Alteon OS Command Reference* and *Application Guide*.

# Typographic Conventions

The following table describes the typographic styles used in this book.

**Table 1** Typographic Conventions

Typeface or Symbol	Meaning	Example
AaBbCc123	This type is used for names of commands, files, and directories used within the text.  It also depicts on-screen computer output and prompts.	View the <code>readme.txt</code> file.  Main#
<b>AaBbCc123</b>	This bold type appears in command examples. It shows text that must be typed in exactly as shown.	Main# <b>sys</b>
<AaBbCc123>	This italicized type appears in command examples as a parameter placeholder. Replace the indicated text with the appropriate real name or value when using the command. Do not type the brackets.  This also shows book titles, special terms, or words to be emphasized.	To establish a Telnet session, enter: host# <b>telnet</b> <IP address>  Read your <i>User's Guide</i> thoroughly.
[ ]	Command items shown inside brackets are optional and can be used or excluded as the situation demands. Do not type the brackets.	host# <b>ls</b> [-a]

## How to Get Help

---

If you need help, service, or technical assistance, see the "Getting help and technical assistance" appendix in the Nortel Networks *Layer 2-7 GbE Switch Module for IBM BladeCenter Installation Guide* on the IBM *BladeCenter Documentation* CD.







# CHAPTER 1

## Getting Started

---

This chapter briefly describes the software features and requirements for the Alteon OS Browser-Based Interface (BBI), and explains how to access the BBI start page.

### Features

---

The network administrator can access all switch configuration and monitoring functions through the BBI, a Web-based switch management interface. The BBI has the following features:

- Many of the same configuration and monitoring functions as the command-line interface
- Intuitive and easy-to-use interface structure
- Password protection
- Nothing to install; the BBI is part of the Alteon OS switch software
- Automatically upgraded with each new software release

---

**NOTE** – You can perform most configuration and monitoring tasks through the BBI. For a comprehensive set of commands, use the command-line interface. Refer to Alteon OS 21.0 *Command Reference for Nortel Networks Layer 2-7 GbE Switch Module for IBM BladeCenter*.

---

## Requirements

---

- GbE Switch Module
- Installed Alteon OS switch software
- PC or workstation with network access to the switch
- Frame-capable Web-browser software, such as the following:
  - Netscape Navigator 4.7x or higher
  - Internet Explorer 6.0x or higher
- JavaScript enabled in your Web browser

## Switch Set Up

---

Before you can access the BBI, minimal configuration is required on the GbE Switch Module.

### IP Interfaces

At least one IP interface must be configured on the switch. This is usually done from the command-line interface during first-time switch set up. Each IP interface address provides a point of access for Alteon OS switch management. The default management interface is 128, which allows access to Alteon OS switch management via the management module network only.

For complete information about configuring IP interfaces, see your GbE Switch Module *Installation Guide*.

### Enabling/Disabling BBI Access

By default, BBI access is enabled. If you need to disable or re-enable access, use the following command from the GbE Switch Module command-line interface:

```
>> Main# /cfg/sys/access/http <disable | enable (or just d | e)>
```

For more information on the accessing and configuring the switch through the command-line interface, see your GbE Switch Module *Installation Guide*.

## Web Browser Set Up

---

Most modern Web browsers work with frames and JavaScript by default, and require no additional set up. However, you should check your Web browser's features and configuration to make sure frames and JavaScript are enabled.

---

**NOTE** – JavaScript is not the same as Java. Please make sure that JavaScript is enabled in your Web browser.

---

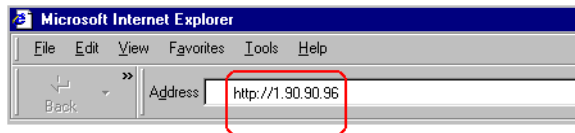
## Starting the BBI

---

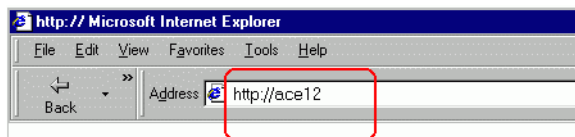
When the switch and browser set up is done, follow these steps to launch the BBI:

1. **Start your Web browser.**
2. **Enter the switch IP interface address in the Web browser's URL field.**

For example, consider an IP interface with a network IP address of 1.90.90.96. Using Netscape Navigator, you could enter the following:

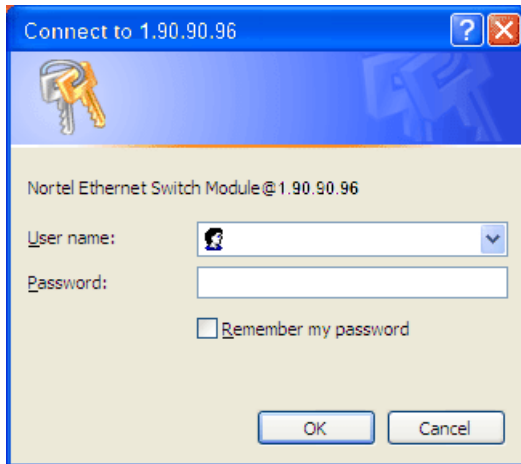


If the IP interface's address has a name on your local domain name server, you could enter the name instead. For example, with Internet Explorer, you could enter the following:



### 3. Log in to the switch.

If your switch and browser are properly configured, you will be asked to enter a password:



Enter the account name and password for the switch's administrator or user account. The default account name is *admin*, and the default password is *admin*. For more password information, see your Alteon OS *Command Reference* manual.

#### 4. Allow the BBI Dashboard page to load.

When the proper account name and password combination is entered, the BBI Dashboard page is displayed in your browser's viewing area:

Switch Dashboard	
Switch Name	
Switch Location	
Switch Type	Nortel Networks Layer2-7 GbE Switch Module
Last Boot Time	0:00:59 Thu Jan 1, 2070 (power cycle)
MAC Address	00:11:f9:f2:b8:00
Switch Software Version	21.0.0.21
Flash Configuration	FLASH image1, active configuration.
PCBA Part Number	316210-A
FAB Number	EL4512001
Serial Number	Y11XL24C2671
Manufacturing Date	0504
Hardware Revision	6
PLD Firmware Version	3.6

**NOTE** – There may be a slight delay while the Dashboard page is being initialized. You should not stop the browser while loading is in progress. When loading is complete, a folder icon will appear in the left-hand navigation window.



## CHAPTER 2

# Browser-Based Interface Basics

Once you are properly logged in, the Browser-Based Interface (BBI) appears in your Web browser's viewing window:

The screenshot shows the Alteon OS BBI interface. At the top is a dark blue header with the Nortel Networks logo on the left and the Alteon OS logo on the right. Below the header is a toolbar with buttons for CONFIGURE, STATISTICS, and DASHBOARD. Underneath the toolbar are action buttons: Apply, Save, Revert, Diff, Dump, DumpBk, and DumpAc. To the right of these are Show Log, Help, and Logout. Below the toolbar is a message window displaying a log entry: "5. Jan 1 0:01:23 NOTICE mgmt: admin login on Console". The main content area is divided into two sections. On the left is a navigation window showing a folder icon and the text "Nortel Networks Layer2-7 GbE Swi". On the right is a forms window titled "Switch Dashboard" containing a table of switch information.

Switch Name	
Switch Location	
Switch Type	Nortel Networks Layer2-7 GbE Switch Module
Last Boot Time	0:00:59 Thu Jan 1, 2070 (power cycle)
MAC Address	00:11:f9:f2:b8:00
Switch Software Version	21.0.0.21
Flash Configuration	FLASH image1, active configuration.
PCEA Part Number	316210-A
FAB Number	EL4512001
Serial Number	YJ1XLZ4C2671
Manufacturing Date	0504
Hardware Revision	6

There are four main regions on the BBI screen:

- The toolbar is used for selecting the context for your actions in the other windows.
- The navigation window is used for selecting particular items or features to act upon.
- The forms window is used for viewing or altering switch information.
- The message window is used for displaying the latest switch `syslog` messages and events.

# Toolbar

---

## Context Buttons

The toolbar is used for setting the context for your actions in the application. There are three context buttons:

---

<b>Configure</b>	When selected, you can access the switch configuration forms. Configuration forms can be altered only if you are logged in using the administrator account. Select an item in the navigation window to display the desired configuration form in the forms window.
<b>Statistics</b>	When selected, you can view information about switch performance. Select an item in the navigation window to display the desired statistics in the forms window.
<b>Dashboard</b>	This context button is selected by default when the BBI is first activated. When selected, basic switch information and status can be viewed in the forms window. Select an item in the navigation window to display the desired dashboard information in the forms window.

---

When a context icon is selected, the button will be highlighted as a reminder of the current context mode.



## Commands

The following general commands are available on the toolbar:

---

<b>Apply</b>	Pending configuration changes do not take effect until the Apply command is selected. Once applied, all changes take effect on the switch immediately. If you do not save the changes, however, they will be lost the next time the switch is rebooted.
<b>Save</b>	Writes applied configuration changes to non-volatile flash memory on the switch.
<b>Revert</b>	Remove pending configuration changes between “apply” commands. Use this command to restore configuration parameters set since last “apply” command.
<b>Diff</b>	Show any pending configuration changes.
<b>Dump</b>	Dump the current switch configuration to a script file.
<b>DumpBk</b>	Dump the backup configuration to a script file.
<b>DumpAc</b>	Dump the active configuration to a script file.
<b>Show Log</b>	Opens a new Web-browser window for displaying the 64 most recent switch log messages. Close the log browser when finished.
<b>Help</b>	Opens a new Web-browser window for displaying the basic online help information. Close the help browser when finished.
<b>Logout</b>	Log off the switch and exit the BBI.

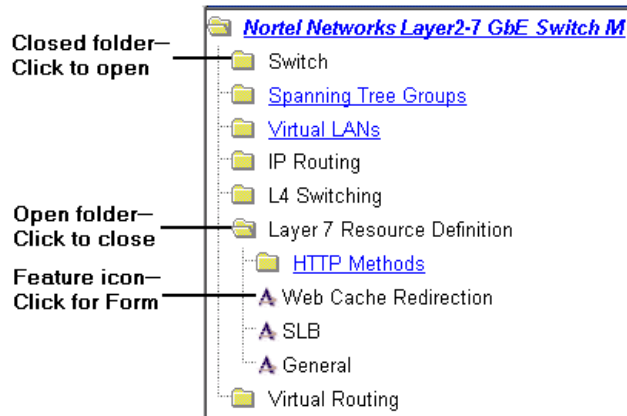
---

## Navigation Window

---

The navigation window is used for selecting a particular switch feature to act upon. Status, statistics, or configuration forms for the selected item will appear in the forms window, depending on the context chosen on the toolbar.

The navigation window contains a tree of folders, sub-folders, and feature icons:



You can click on any closed folder to open it and reveal its contents. Click on any open folder to close it. Click on any feature icon to load the appropriate status, statistics, or configuration form in the forms window.

Some folders also have forms. If the name of the folders is underlined, click on the name to display the appropriate form.

## Forms Window

---

When a feature icon is selected on the navigation window, a status, statistics, or configuration form is displayed in the forms window. The exact nature of the form depends on the current context selected on the toolbar, as well as the type of information available. Not all feature icons have forms for all contexts.

Some forms display switch information such as settings, status, or statistics. Others allow you to make configuration changes to switch parameters.

## Message Window

---

Switch log messages are generated by events such as login/logout activity, password changes, configuration changes, and switch reboot. The BBI records the 64 most recent messages and displays each one briefly in the message window. When the last message has been displayed, the cycle repeats.

To view all 64 messages at the same time, select the Show Log command on the toolbar. A new Web-browser window will be opened to display the log information. Close the window when finished.

For a list of `syslog` messages, see your Alteon OS *Command Reference* manual.



## CHAPTER 3

# Configuring the Switch

The Browser-Based Interface (BBI) can be used to view and change switch configuration parameters. The same configuration parameters that are available through the switch's command-line interface are present on the BBI configuration forms.

The following provides a basic outline for switch configuration. You should first be familiar with configuration as covered in the *Alteon OS 21.0 Command Reference* manual.

---

**NOTE** – You must be logged in using the administrator account in order to change switch configuration settings.

---

## Configuration Steps

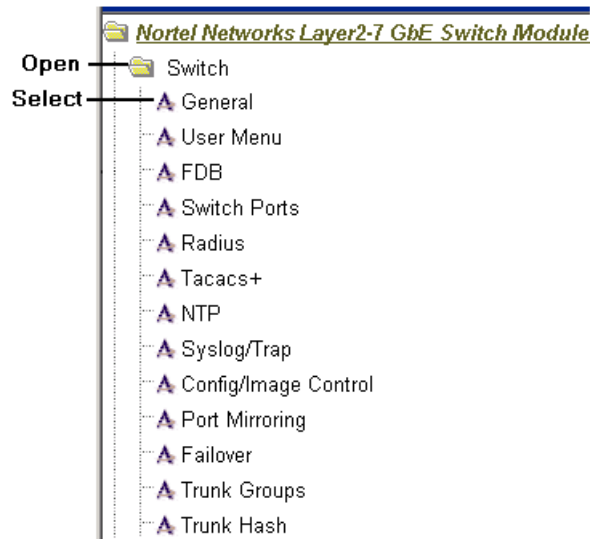
---

Follow these basic steps for viewing or configuring switch parameters:

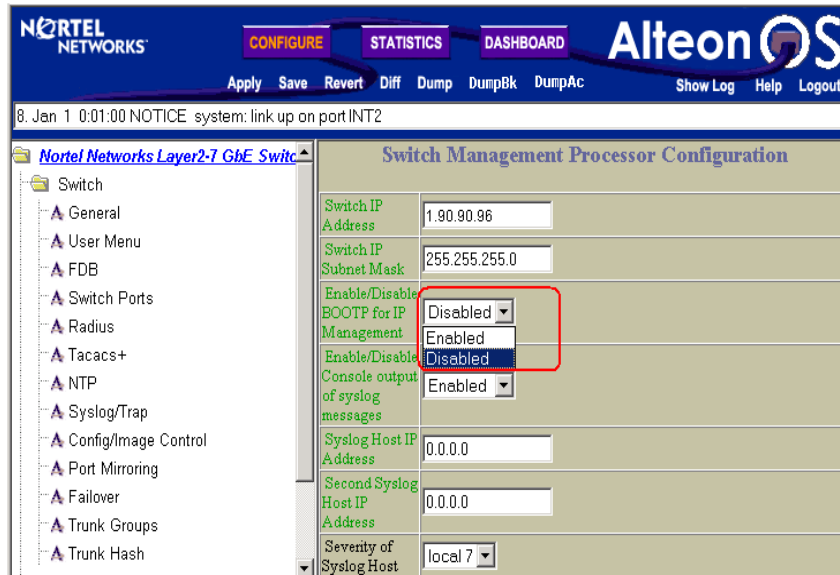
1. Select the Configure context button in the toolbar:



2. Select a feature icon in the navigation window. For example:



3. View or make changes to the settings shown in the forms window. For example:

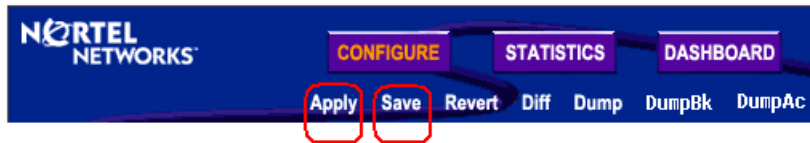


**NOTE** – Fields which must be configured for proper switch operations are highlighted on the forms in **GREEN** type. Items which load other forms when selected are underlined.

#### 4. Submit, reset, or delete the form contents using buttons on the bottom of the form.

<b>Submit</b>	When selected, the form is sent to the switch. Any configuration changes are placed in the “pending” state and do not take effect until the toolbar Apply command is given.
<b>Reset</b>	When selected, the form fields are reset to their last submitted values.
<b>Delete</b>	This button is available for configuration items that can be deleted. When selected, the featured item is slated to be removed from the switch configuration database. The item is not actually deleted, however, until the toolbar Apply command is given.

#### 5. Apply and save your changes using the toolbar commands.



Pending configuration changes (including deletions) do not take effect until the Apply command is selected.

Applied changes take effect on the switch immediately, but will be lost the next time the switch is rebooted unless the Save command is selected.

## Using the BBI to Load Switch Software

You can use the Browser-Based Interface to load software onto the GbE Switch Module (GbESM). The software image to load can reside in one of the following locations:

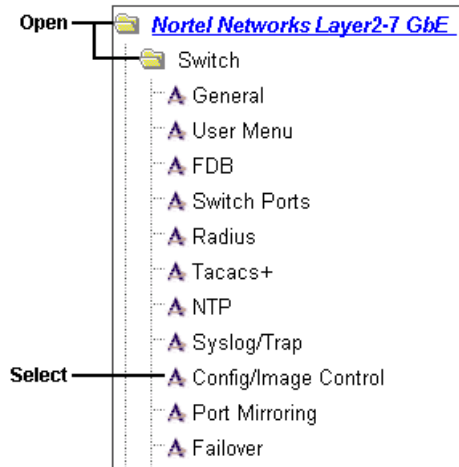
- FTP server
- TFTP server
- Local computer

After you log onto the BBI, perform the following steps to load a software image:

#### 1. Click the Configure context button in the toolbar:



2. In the Navigation Window, select System > Config/Image Control.



The Switch Image and Configuration Management page appears.

### Switch Image and Configuration Management

Image 1 Version	version 21.0.0, downloaded 0:07:04 Thu Jan 1, 2005
Image 2 Version	version 21.0.1, downloaded 0:07:45 Thu Jan 1, 2005
Boot Version	version 21.0.0
Active Image Version	21.0.0
Next Boot Image Selection	image 2

Active Configuration Block	active config
Next Boot Configuration Block Selection	active config

FTP/TFTP Settings	
Hostname or IP Address of FTP/TFTP server	100.10.20.1
Username for FTP Server or Blank for TFTP Server	
Password for FTP Server	

Image Settings	
Image for Transfer	image 2
Image Filename (on server)	21.0.1_OS.img <span style="float: right;">Get Image Put Image</span>
Image Filename (on HTTP Client)	<input type="text"/> <span style="float: right;">Browse... Download via Browser</span>



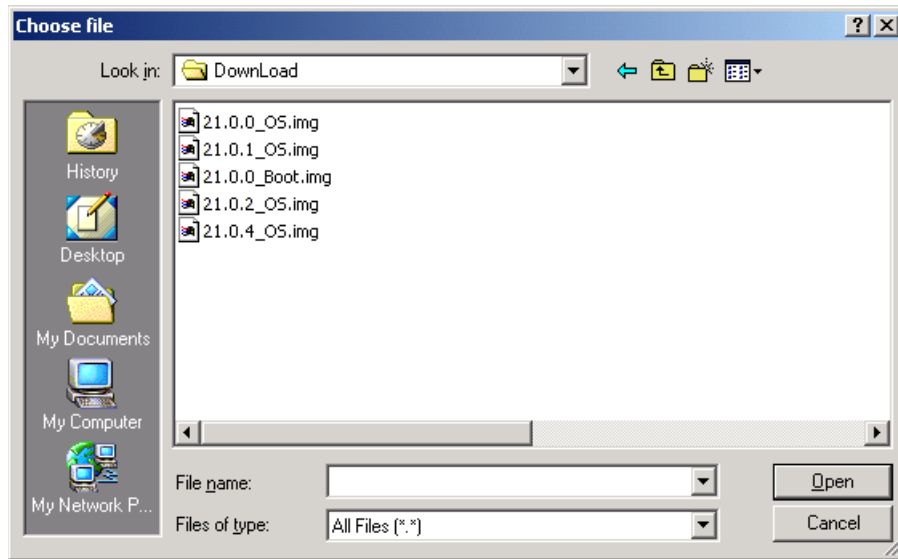
3. If you are loading software from your computer (HTTP client), go to Step 4. If you are loading software from a FTP/TFTP server, enter the server's information in the FTP/TFTP Settings section.

FTP/TFTP Settings	
Hostname or IP Address of FTP/TFTP server	100.10.20.1
Username for FTP Server or Blank for TFTP Server	
Password for FTP Server	

4. In the Image Settings section, select the image version you want to replace (Image for Transfer).

Image Settings	
Image for Transfer	image 2 ▾
Image Filename (on server)	21.0.2_05.img <input type="button" value="Get Image"/> <input type="button" value="Put Image"/>
Image Filename (on HTTP Client)	<input type="text"/> <input type="button" value="Browse..."/> <input type="button" value="Download via Browser"/>

- If you are loading software from a FTP/TFTP server, enter the file name and click Get Image.
- If you are loading software from your computer, click Browse. In the File Download Dialog, select the file and click OK. Click Download via Browser.



Once the image has loaded, the page refreshes to show the new software.

## CHAPTER 4

# Viewing Statistics

The Alteon OS Browser-Based Interface (BBI) can be used to view a variety of switch performance statistics. The same statistics that are available through the switch's command-line interface are present on the BBI statistics forms.

The following provides a basic outline for viewing statistics. You should first be familiar with available statistics as covered in the *Alteon OS 21.0 Command Reference* manual.

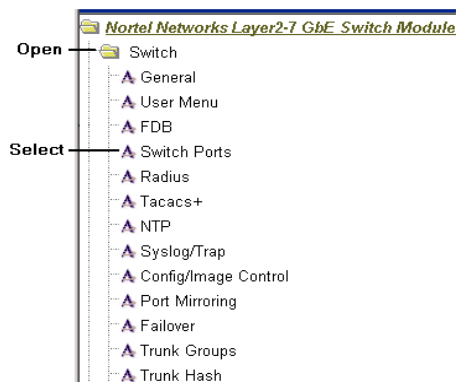
## Steps for Displaying Statistics

Follow these basic steps for viewing switch statistics:

1. Select the Statistics context button in the toolbar:



2. Select a feature icon in the navigation window. For example:



3. View the statistics in the forms window. For example:

The screenshot shows the Alteon OS web interface. The top navigation bar includes 'CONFIGURE', 'STATISTICS', and 'DASHBOARD' tabs. Below the navigation bar, there are buttons for 'Apply', 'Save', 'Revert', 'Diff', 'Dump', 'DumpBk', 'DumpAc', 'Show Log', 'Help', and 'Logout'. A status bar at the top displays the date and time: '30. Jan 1 0:39:15 10.1.1.1 NOTICE mgmt: Management via all ports is DISABLED thru I2C Control Register'.

The main content area is titled 'Switch Ports Statistics Summary'. On the left, there is a navigation tree with the following items:

- Switch
  - General
  - User Menu
  - FDB
  - Switch Ports
  - Radius
  - Tacacs+
  - NTP
  - Syslog/Trap
  - Config/Image Control
  - Port Mirroring
  - Failover
  - Trunk Groups
  - Trunk Hash
  - LACP
  - UpLink Fast
  - Port Management Acce
  - Spanning Tree Groups
  - Virtual LANs

The main table displays the following data:

Switch Port	InOctets	OutOctets	Total Errors
<a href="#">INT1</a>	95360	616068	0
<a href="#">INT2</a>	0	711428	0
<a href="#">INT3</a>	0	711296	0
<a href="#">INT4</a>	0	711296	0
<a href="#">INT5</a>	0	711296	0
<a href="#">INT6</a>	0	711296	0
<a href="#">INT7</a>	0	711296	0
<a href="#">INT8</a>	0	711296	0
<a href="#">INT9</a>	0	711296	0
<a href="#">INT10</a>	0	711364	0
<a href="#">INT11</a>	0	711296	0
<a href="#">INT12</a>	0	711296	0
<a href="#">INT13</a>	0	711296	0
<a href="#">INT14</a>	0	711296	0
<a href="#">MGT1</a>	660840	464697	0
<a href="#">MGT2</a>	0	0	0
<a href="#">EXT1</a>	0	16000	0
<a href="#">EXT2</a>	0	16000	0

---

**NOTE** – The sample screens that appear in this document might differ slightly from the screens displayed by your system. Screen content varies based on the type of BladeCenter unit that you are using and the firmware versions and options that are installed.

---



---

**NOTE** – Items which load other forms when selected are underlined.

---

## CHAPTER 5

# The Dashboard

The Alteon OS Browser-Based Interface (BBI) can be used to view the present settings and operating status of a variety of switch features. The same information available through the switch's command-line interface is present on the dashboard forms.

The following provides a basic outline for viewing the dashboard forms. You should first be familiar with configuration as covered in the *Alteon OS 21.0 Command Reference* manual.

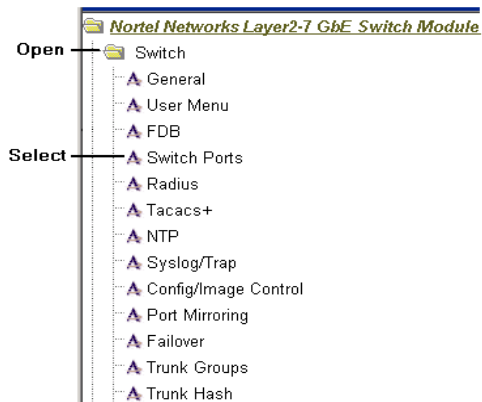
## Steps for Displaying Dashboards

Follow these basic steps for viewing switch dashboard forms:

1. Select the Dashboard context button in the toolbar:



2. Select a feature icon in the navigation window. For example:



### 3. View information shown in the forms window. For example:

Status	Switch Port Info	Operational Status	Duplex FlowCtl Speed	Input Frames Output Frames	LinkState Changes Total Errors
	<a href="#">INT1</a> : <u>stp:FORWARDING</u> <u>rmon:disabled</u> <u>Port Fast</u> <u>Forward:disabled</u> <u>tagging:enabled</u> <u>PVID:1</u>	operational	Full/Both/1000	1554 9914	1 0
	<a href="#">INT2</a> : <u>stp:FORWARDING</u> <u>rmon:disabled</u> <u>Port Fast</u> <u>Forward:disabled</u> <u>tagging:enabled</u> <u>PVID:1</u>	operational	Full/Both/1000	0 11468	1 0
	<a href="#">INT3</a> : <u>stp:FORWARDING</u> <u>rmon:disabled</u> <u>Port Fast</u> <u>Forward:disabled</u> <u>tagging:enabled</u> <u>PVID:1</u>	operational	Full/Both/1000	0 11466	1 0
	<a href="#">INT4</a> : <u>stp:FORWARDING</u> <u>rmon:disabled</u> <u>Port Fast</u> <u>Forward:disabled</u> <u>tagging:enabled</u> <u>PVID:1</u>	operational	Full/Both/1000	0 11466	1 0
	<a href="#">INT5</a> : <u>stp:FORWARDING</u> <u>rmon:disabled</u> <u>Port Fast</u> <u>Forward:disabled</u> <u>tagging:enabled</u> <u>PVID:1</u>	operational	Full/Both/1000	0 11466	1 0
	<a href="#">INT6</a> : <u>stp:FORWARDING</u>				

**NOTE** – The sample screens that appear in this document might differ slightly from the screens displayed by your system. Screen content varies based on the type of BladeCenter unit that you are using and the firmware versions and options that are installed.

**NOTE** – Items which load other forms when selected are [underlined](#).

## Free Manuals Download Website

<http://myh66.com>

<http://usermanuals.us>

<http://www.somanuals.com>

<http://www.4manuals.cc>

<http://www.manual-lib.com>

<http://www.404manual.com>

<http://www.luxmanual.com>

<http://aubethermostatmanual.com>

Golf course search by state

<http://golfingnear.com>

Email search by domain

<http://emailbydomain.com>

Auto manuals search

<http://auto.somanuals.com>

TV manuals search

<http://tv.somanuals.com>